

UNIDAD 6

6. PROYECTO ARQUITECTÓNICO

6.1. PLANOS ARQUITECTÓNICOS

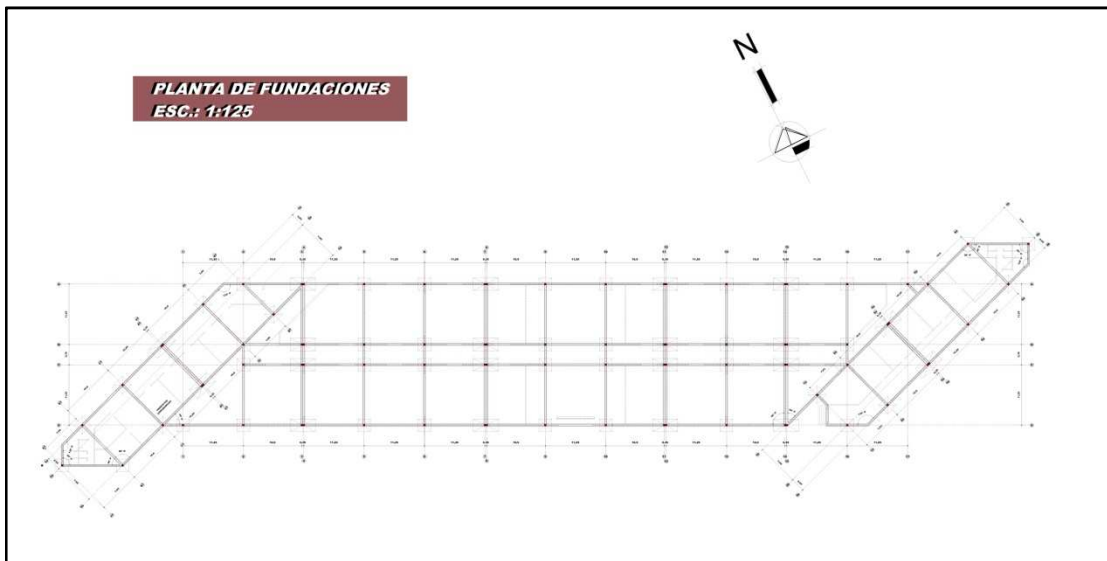
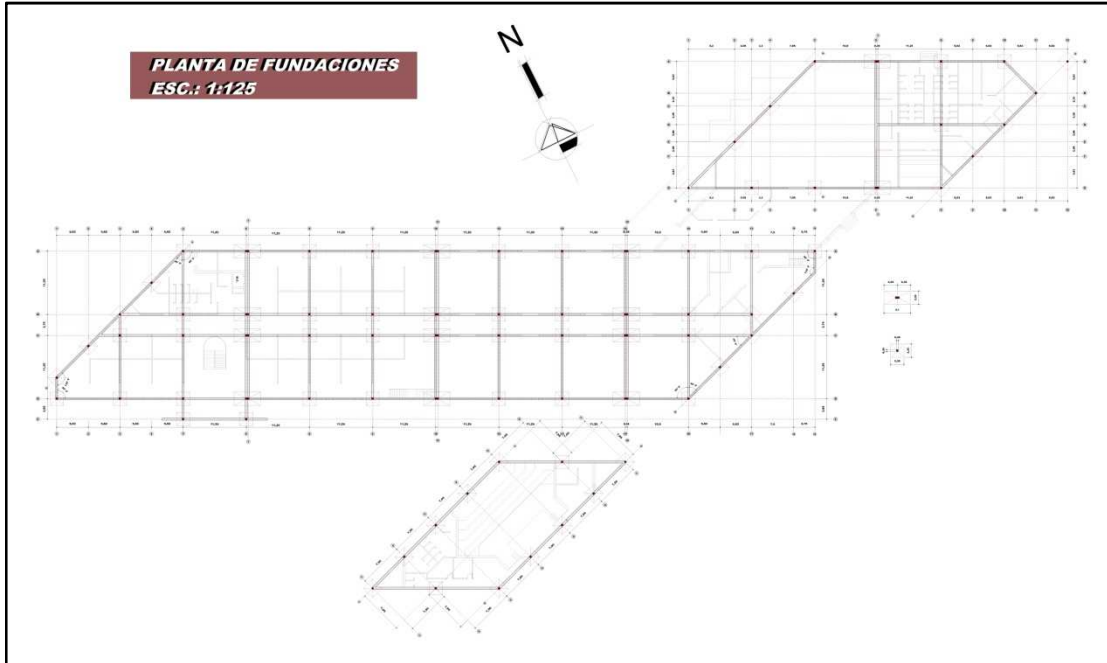


PLANIMETRÍA GENERAL



PLANIMETRÍA NIVEL 0.00

FUNDACIONES



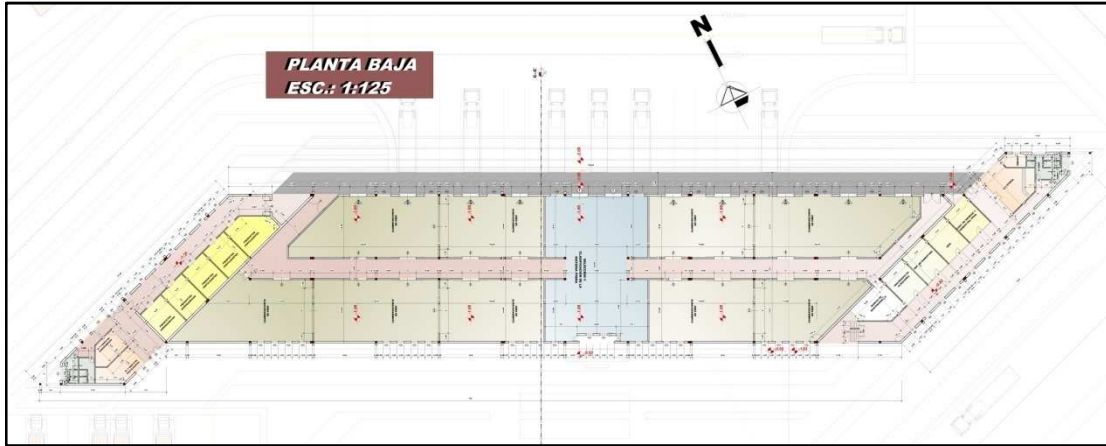
**PLANTA BAJA ACOTADA**



**PLANTA BAJA AMOBLADA**



**PLANTA BAJA ACOTADA**

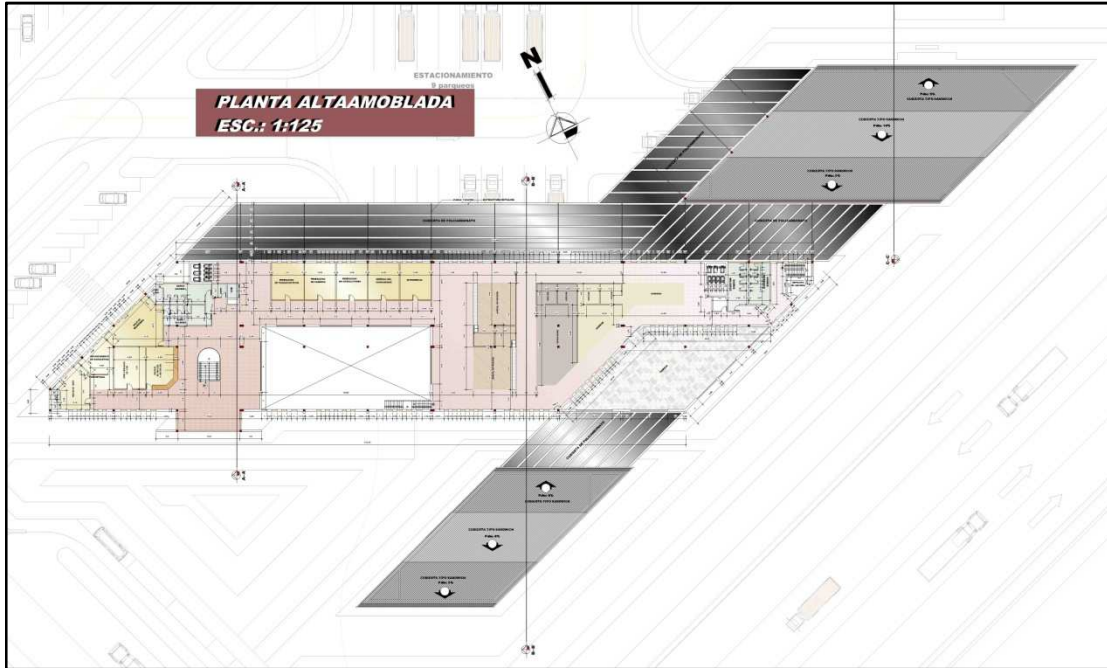


**PLANTA BAJA AMOBLADA**

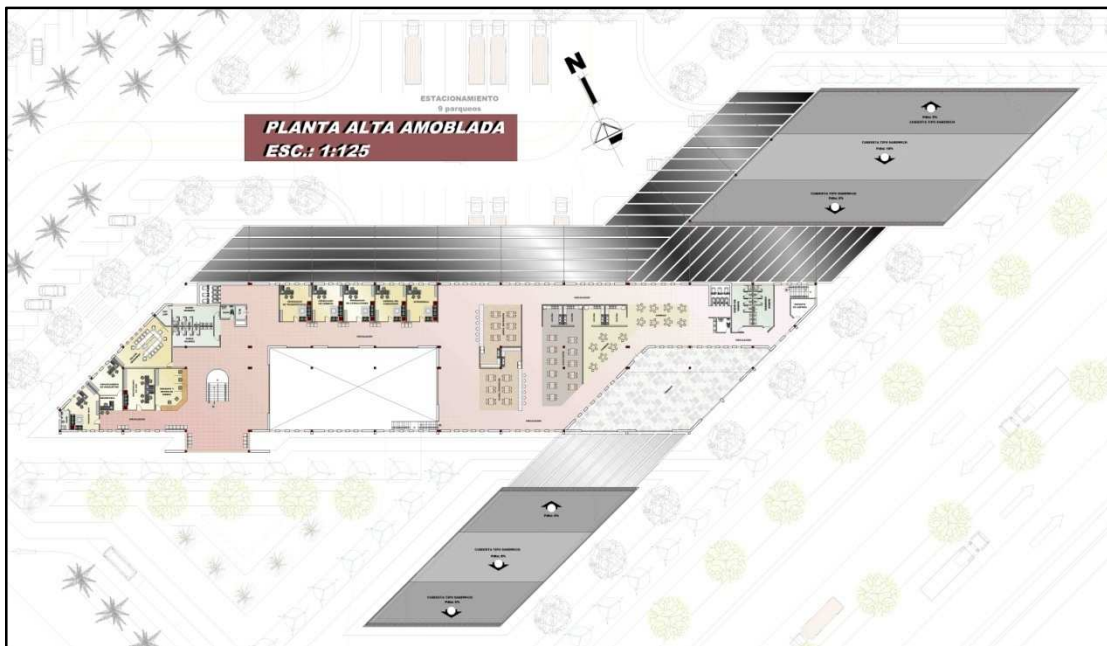




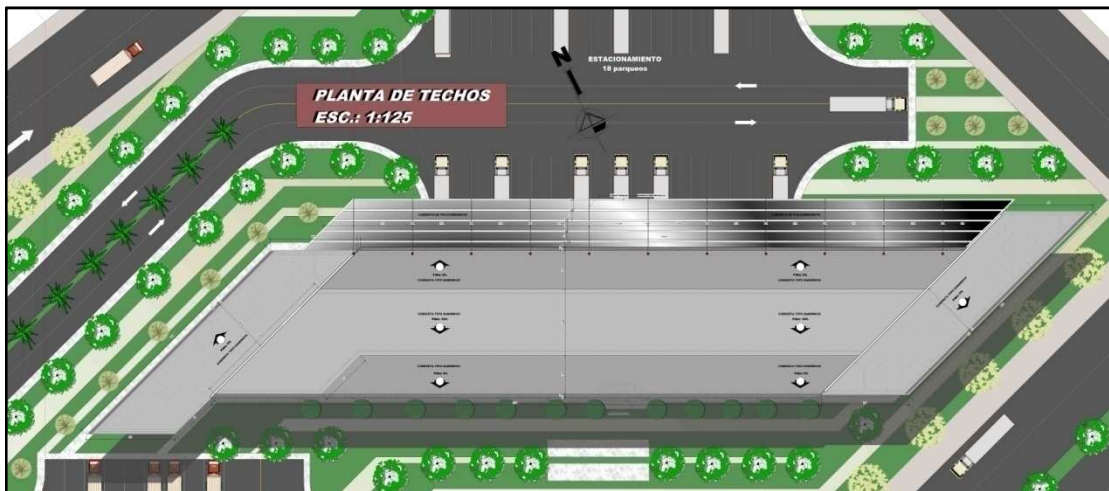
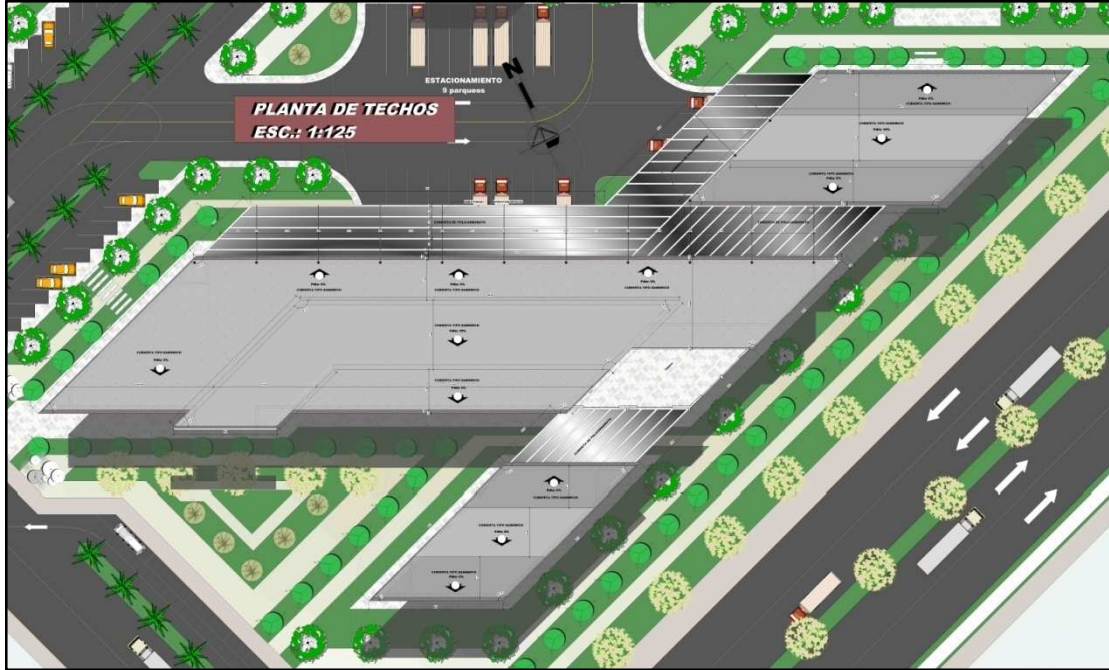
**PLANTA ALTA ACOTADA**



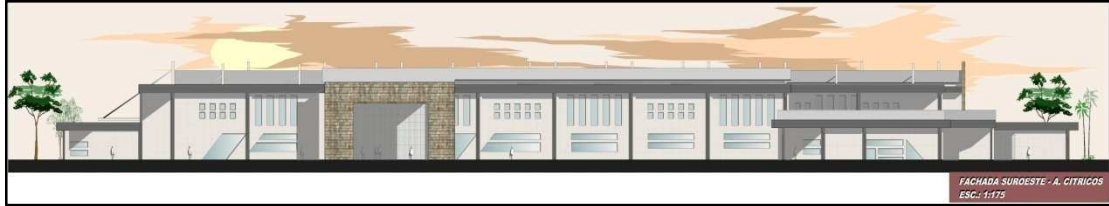
**PLANTA ALTA AMOBLADA**



PLANTA DE TECHOS



FACHADAS



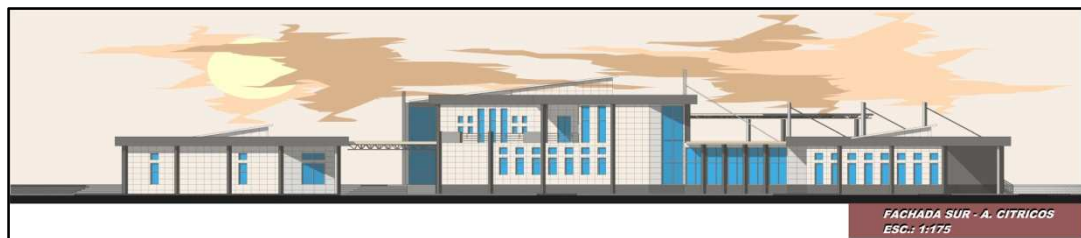
FACHADA SUROESTE – A. CÍTRICOS



FACHADA NOROESTE – A. CÍTRICOS



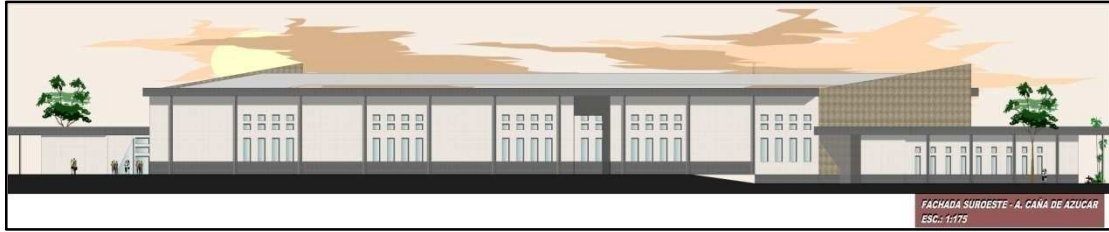
FACHADA OESTE – A. CÍTRICOS



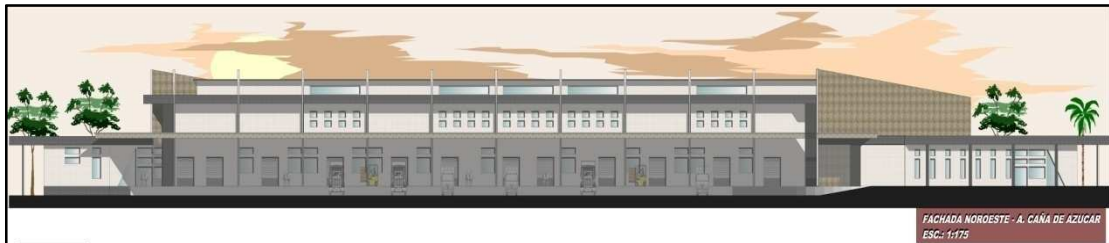
FACHADA SUR – A. CÍTRICOS



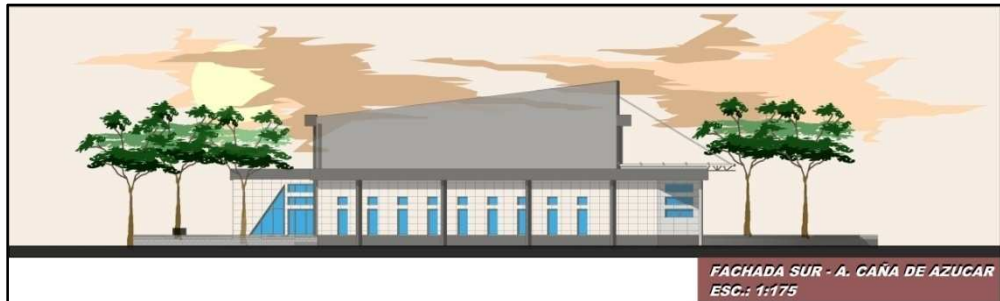
FACHADAS



FACHADA SUROESTE – A. CAÑA DE AZÚCAR



FACHADA NOROESTE – A. CAÑA DE AZÚCAR



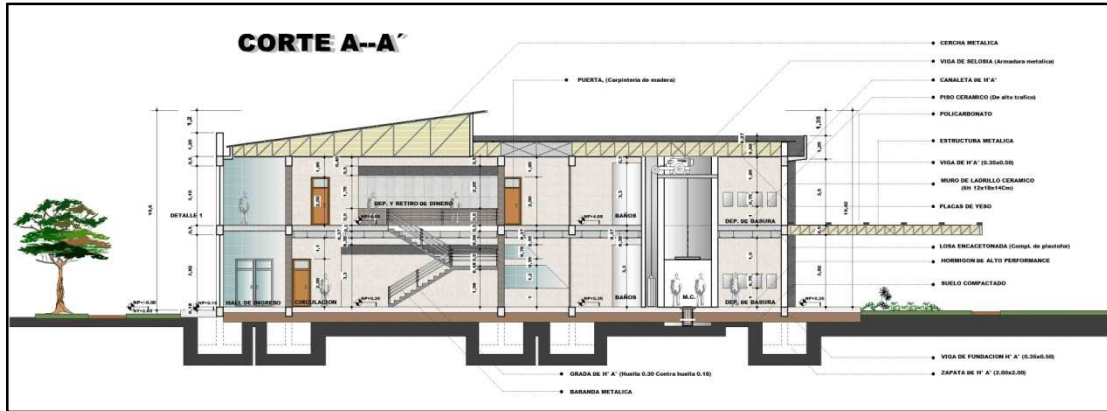
FACHADA SUR – A. CAÑA DE AZÚCAR



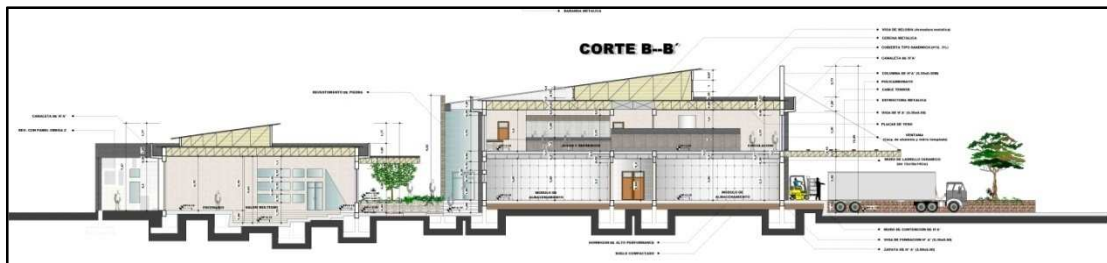
FACHADA OESTE – A. CAÑA DE AZÚCAR



CORTES



CORTE A—A

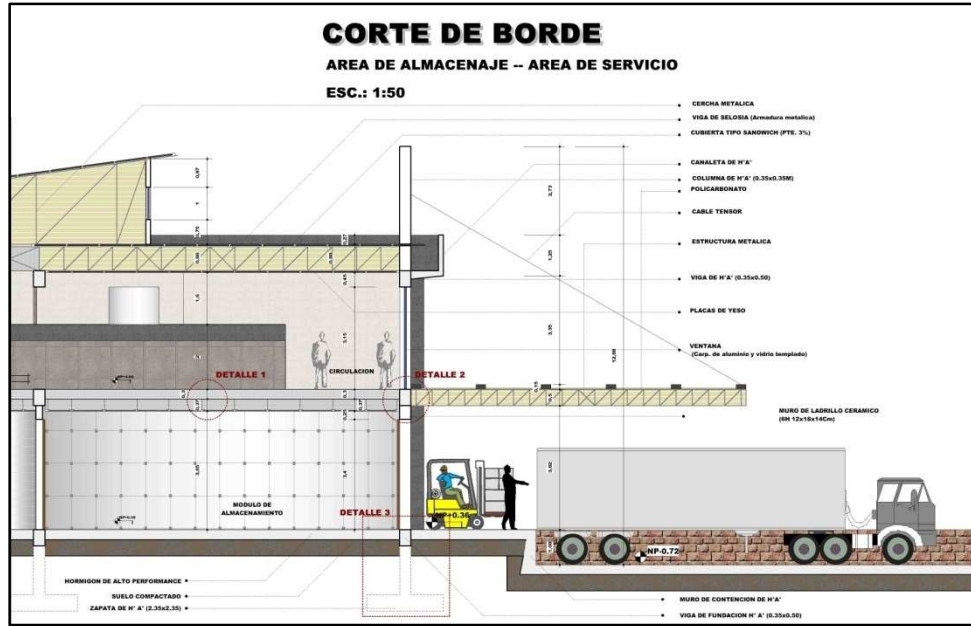


CORTE "B—B

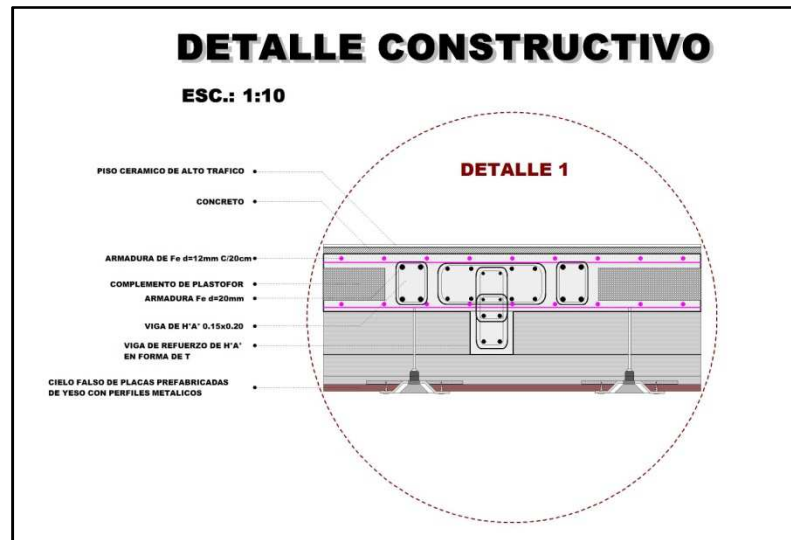


CORTE C—C

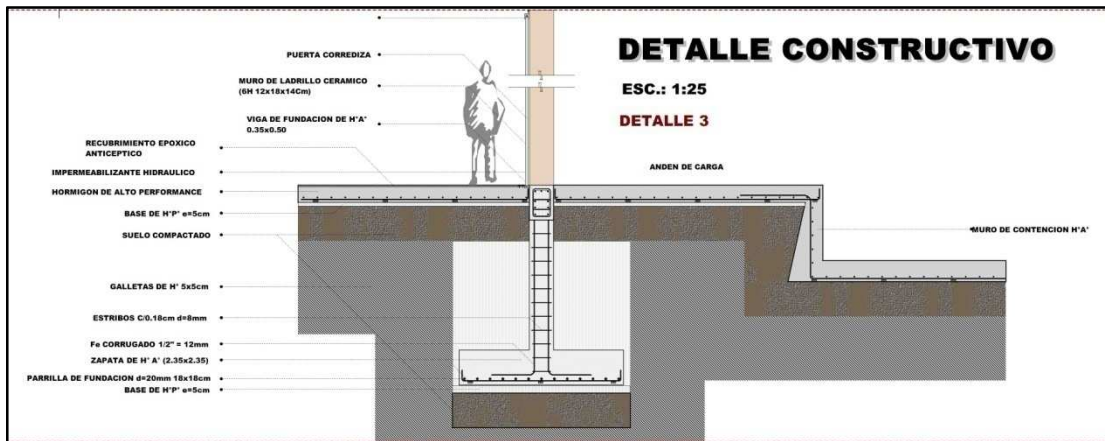
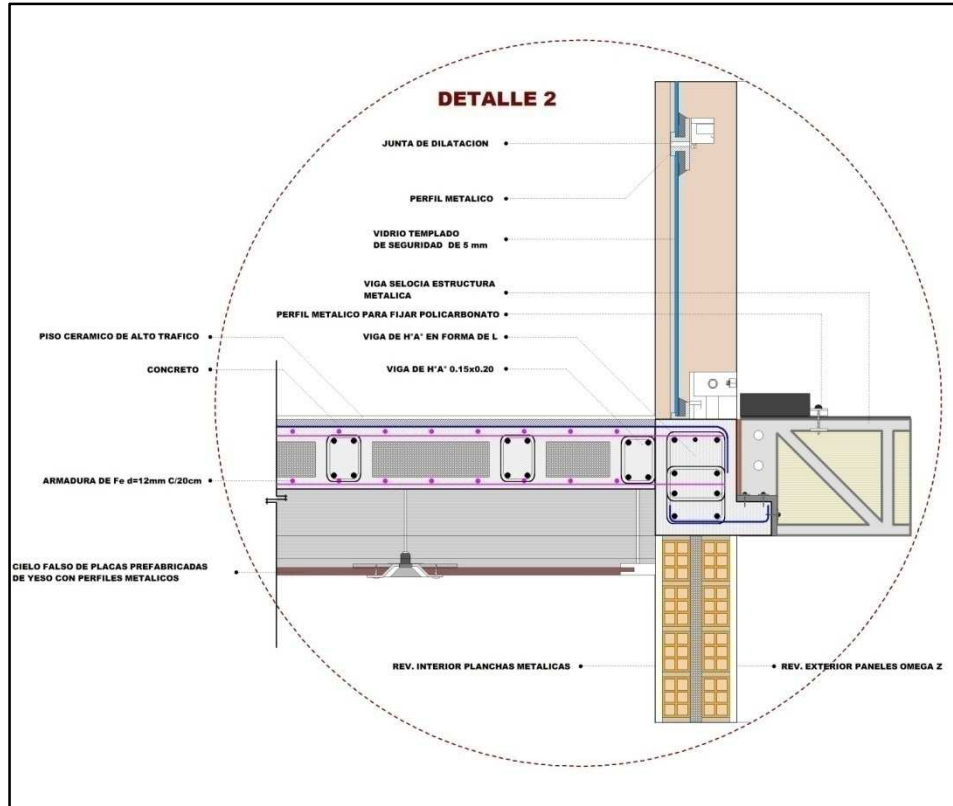
CORTE DE BORDE



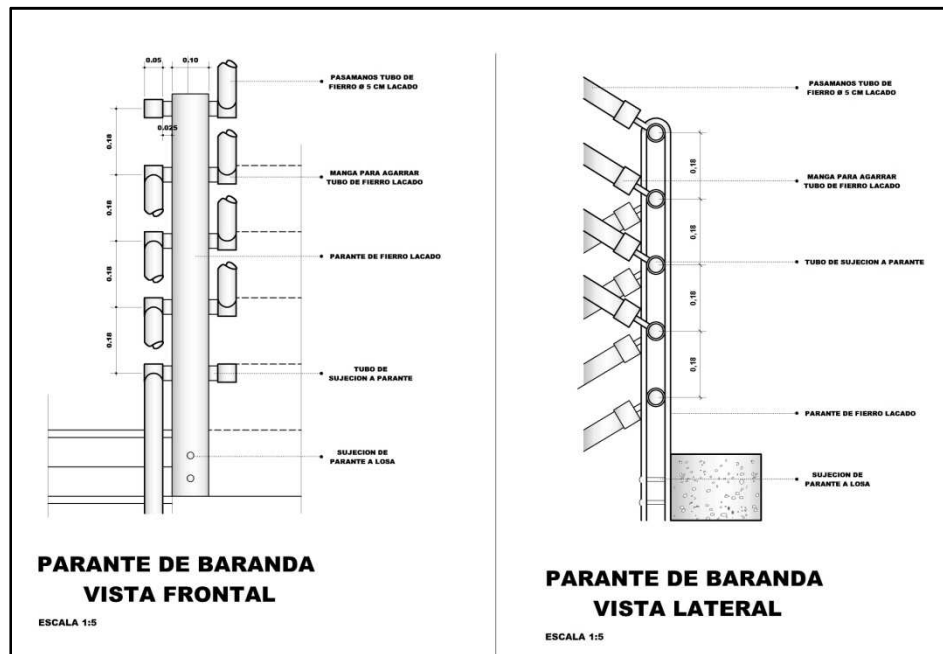
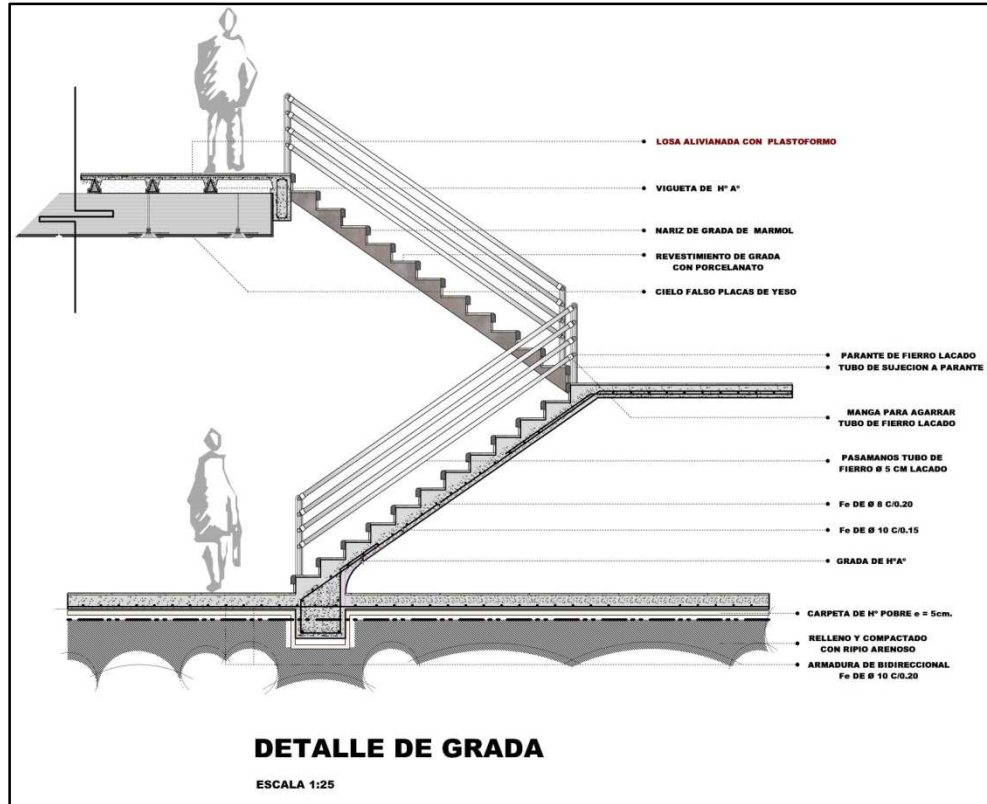
DETALLES CONSTRUCTIVOS



DETALLES CONSTRUCTIVOS

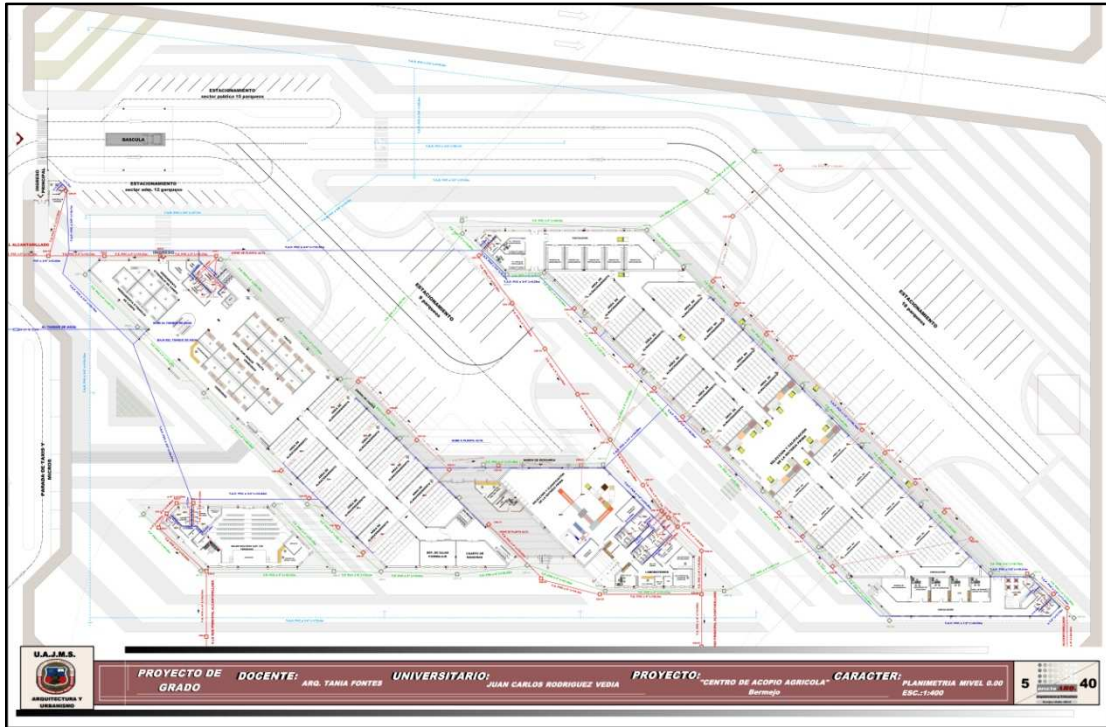


DETALLES CONSTRUCTIVOS

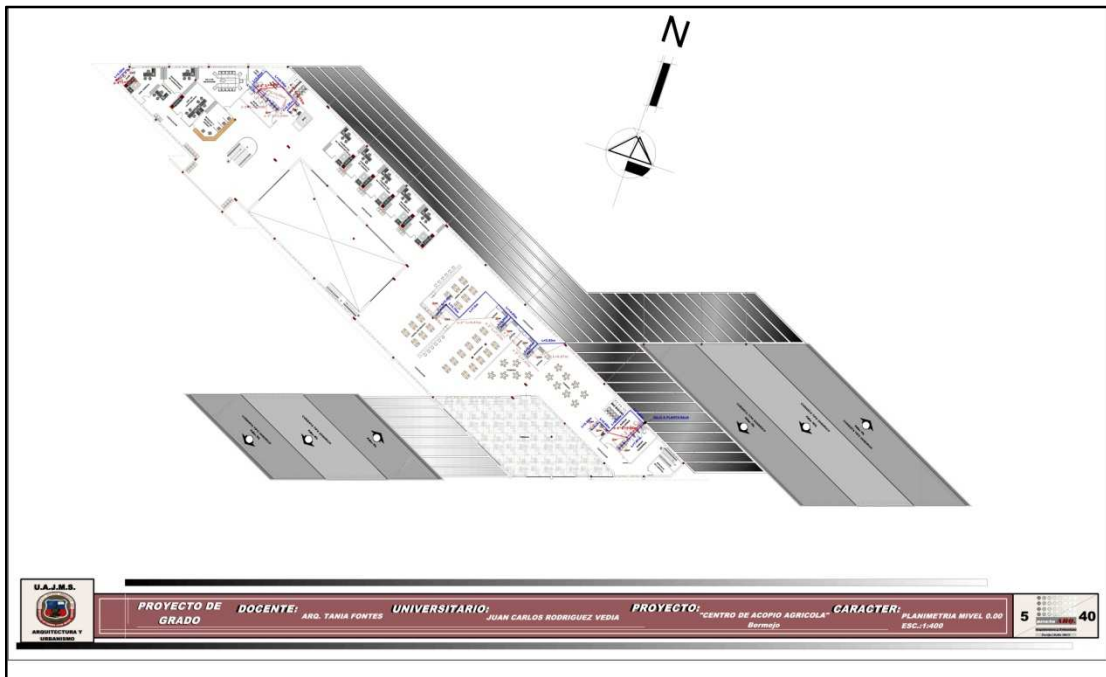




INSTALACIONES HIDROSANITARIAS

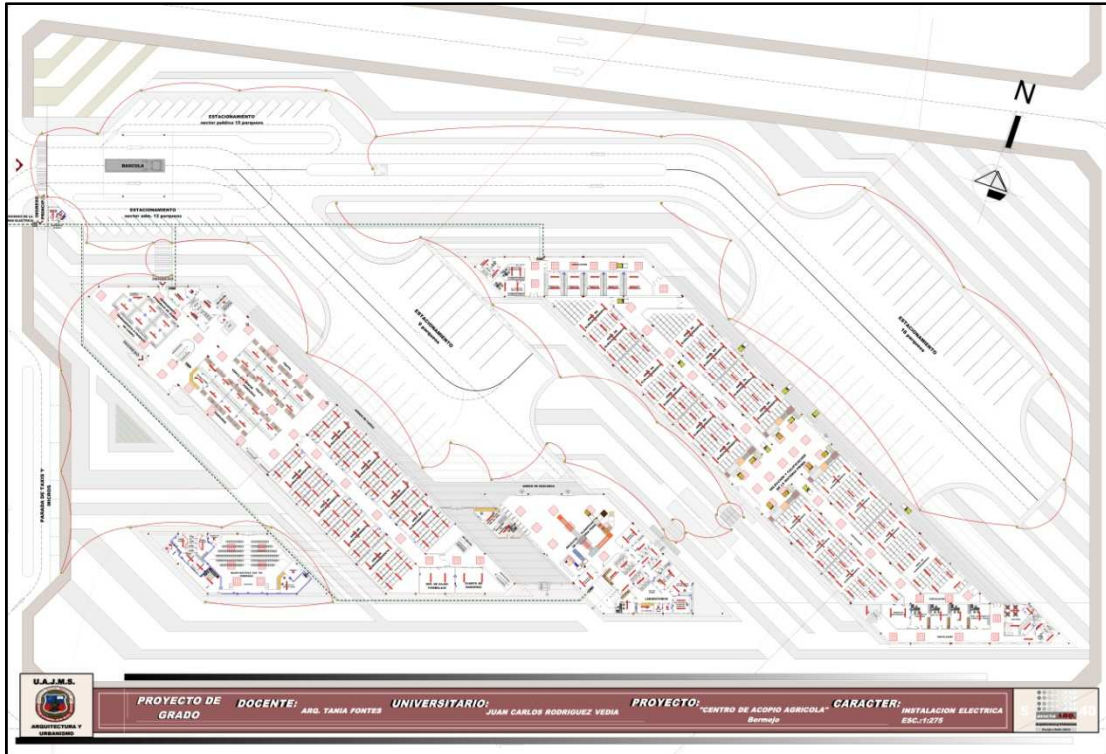


PLANTA BAJA

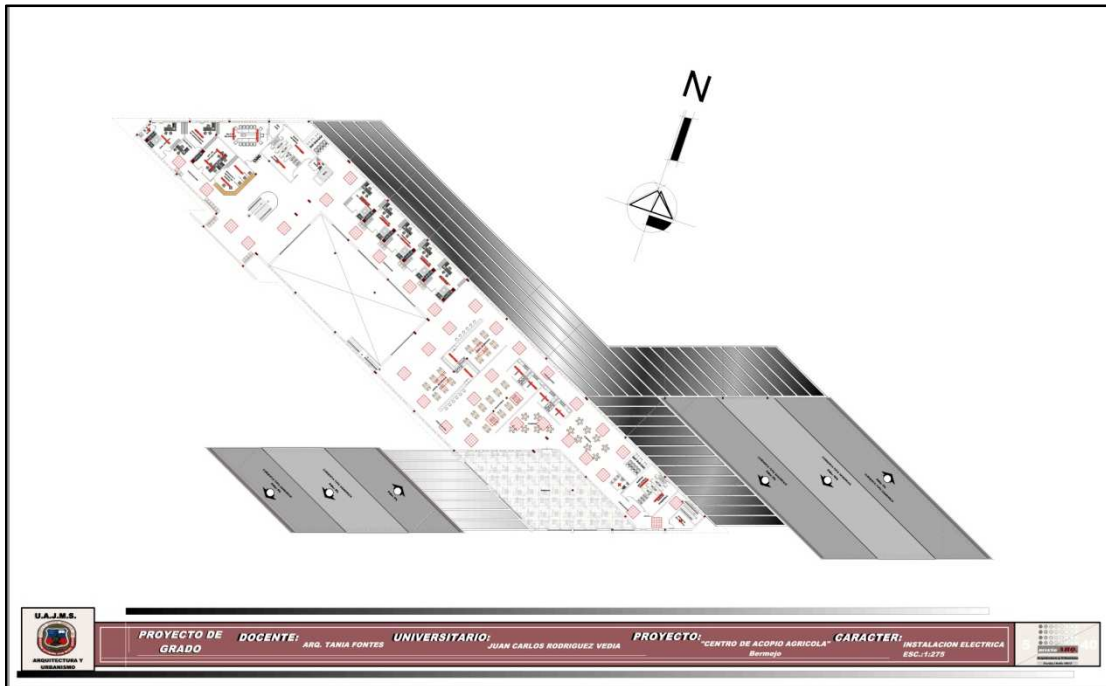


PLANTA ALTA

# INSTALACIÓN ELÉCTRICA

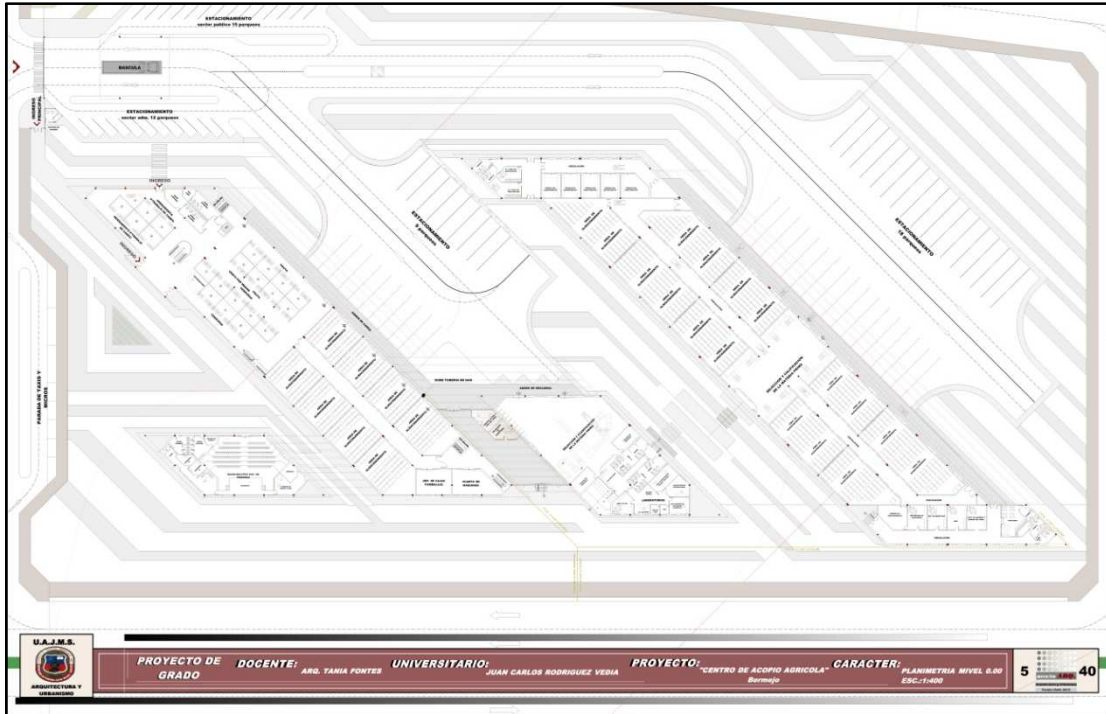


PLANTA BAJA

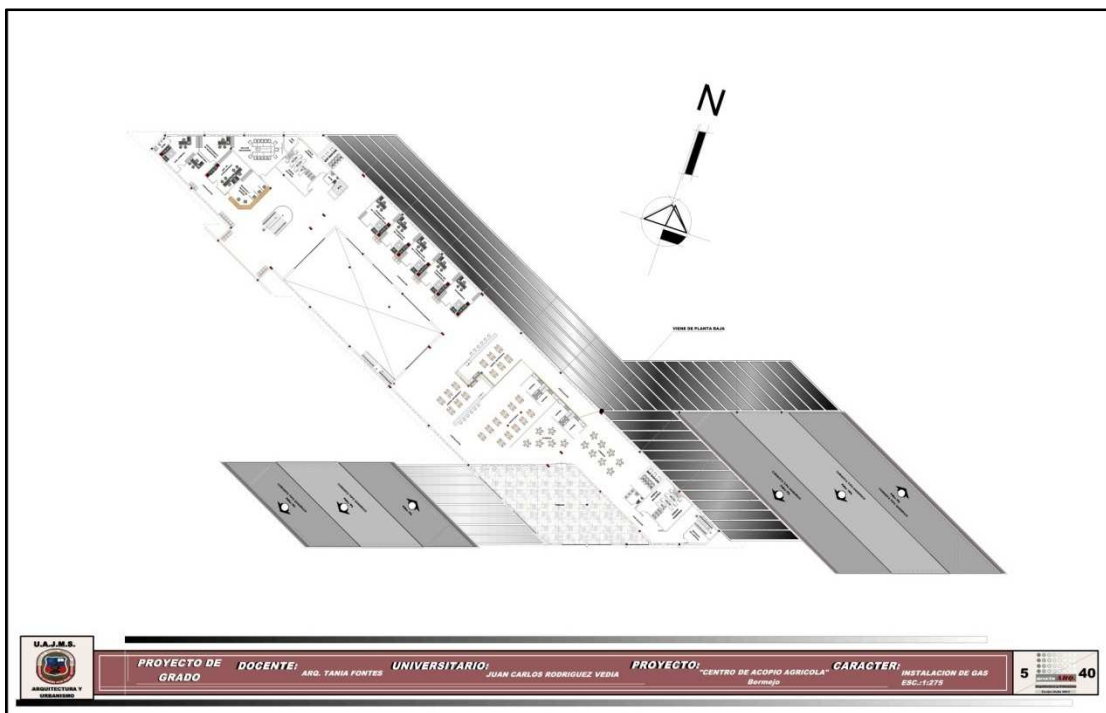


PLANTA ALTA

### INSTALACIÓN DE GAS



PLANTA BAJA



PLANTA ALTA



PERSPECTIVAS



*VISTA SECTOR OESTE (Bloque A. Cítricos – Administración – Servicios de Alimentación)*



*VISTA SECTOR OESTE (Bloque A. Cítricos – A. Caña de Azúcar)*



*VISTA SECTOR OESTE (Bloque A. Cítricos)*





*VISTA INGRESO PRINCIPAL*



*VISTA PANORÁMICA*



*VISTA DEL INGRESO CONTROL, SEGURIDAD*

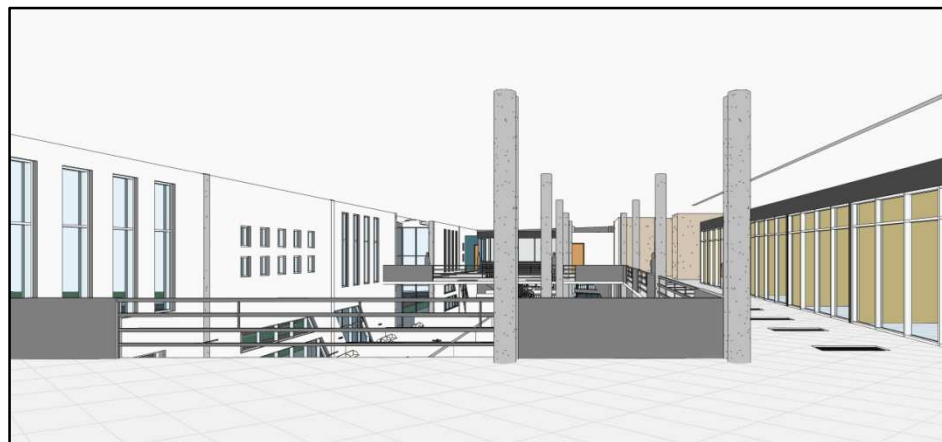
VISTAS INTERIORES



VISTA INTERIOR (Recepción e informaciones)



VISTA INTERIOR (Módulos para la venta de productos)





*VISTA INTERIOR (Administración – venta de productos)*

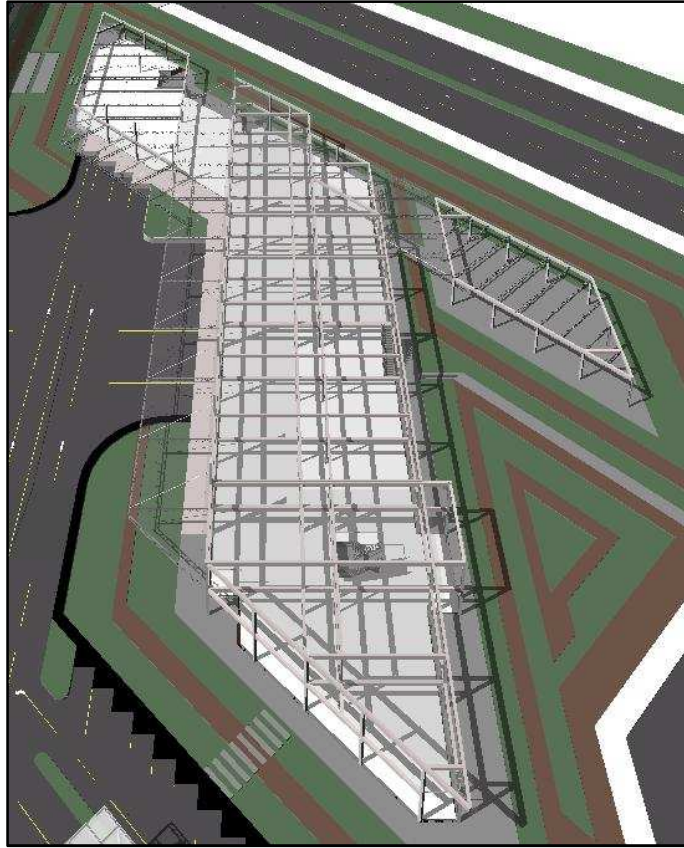


*VISTA INTERIOR (Administración – venta de productos)*



*VISTA INTERIOR (Venta de productos)*

### 6.3. SISTEMA ESTRUCTURAL

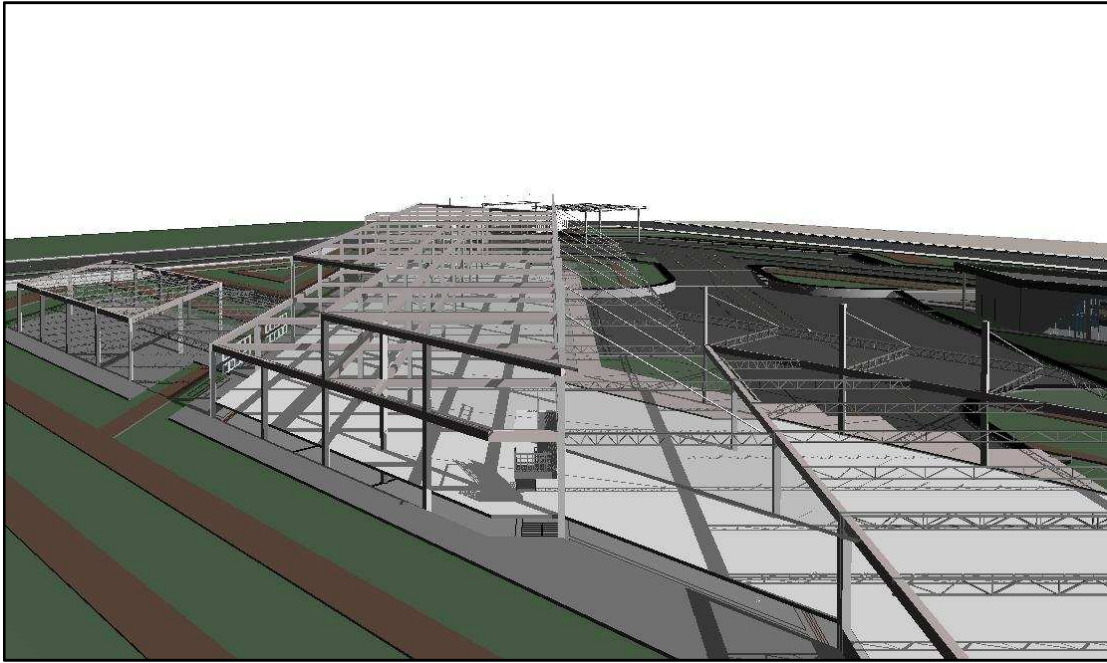


*SISTEMA ESTRUCTURAL (Bloque A. Cítricos – Administración – Servicios de Alimentación)*



*SISTEMA ESTRUCTURAL (Bloque A. Cítricos – Administración – Servicios de Alimentación)*

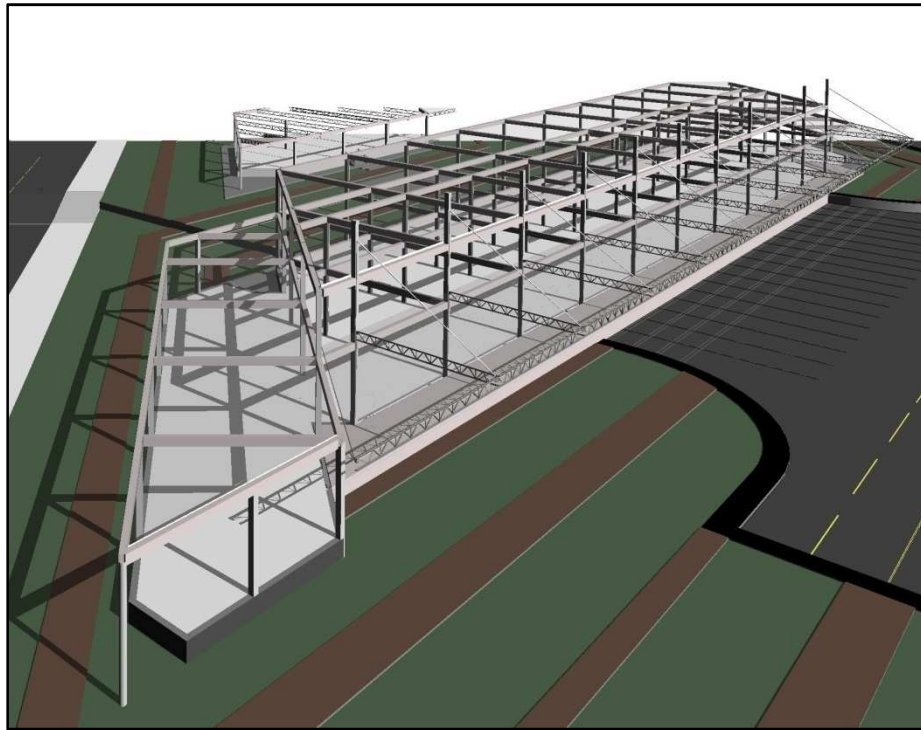




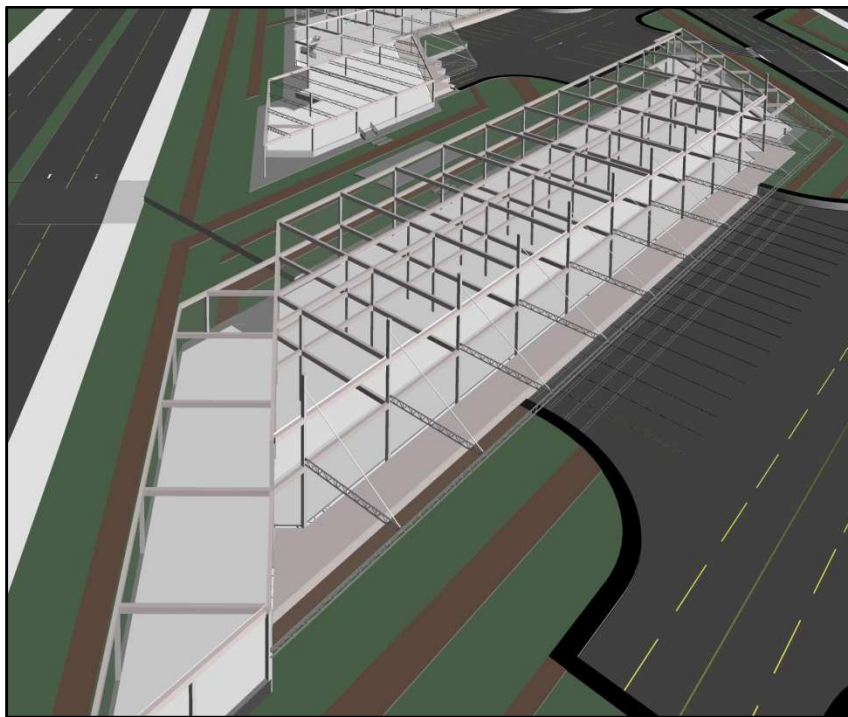
*SISTEMA ESTRUCTURAL (Bloque A. Cútricos – Administración – Servicios de Alimentación)*



*SISTEMA ESTRUCTURAL (Bloque Acopio. Cútricos – Administración – Servicios de Alimentación)*



*SISTEMA ESTRUCTURAL (Bloque Acopio Caña de Azúcar)*



*SISTEMA ESTRUCTURAL (Bloque Acopio Caña de Azúcar)*