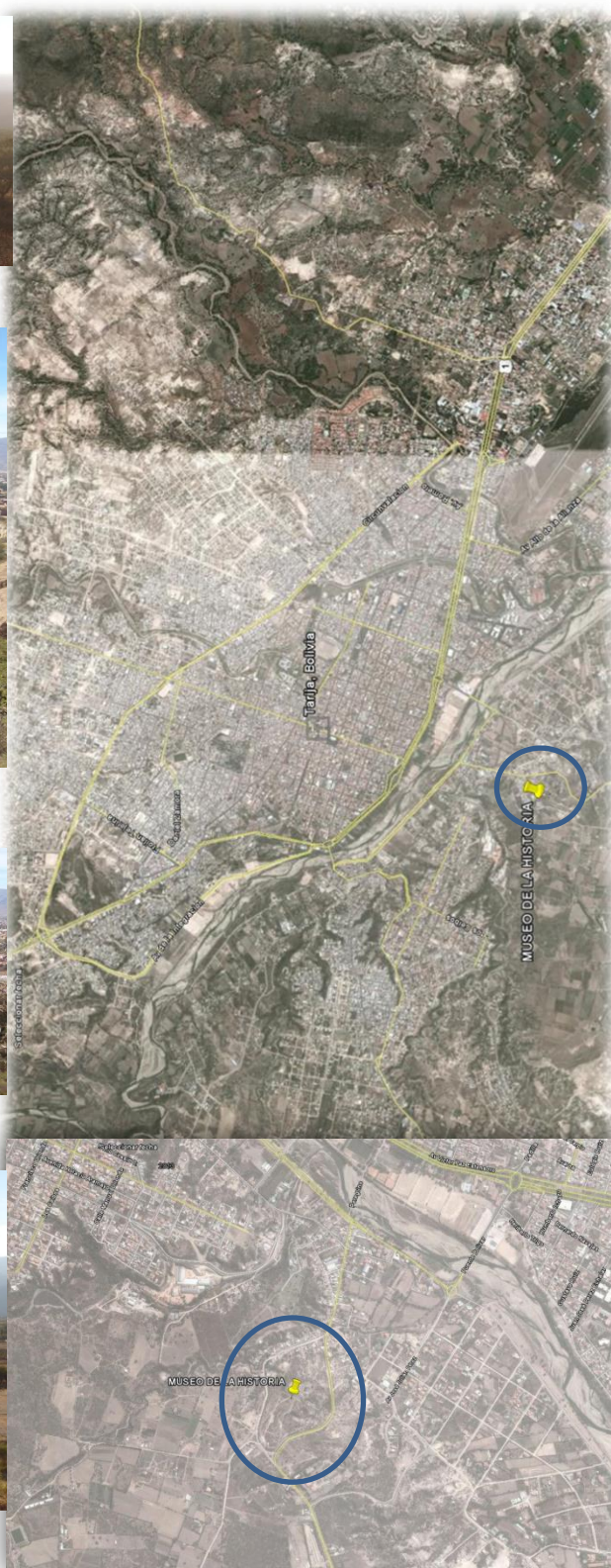
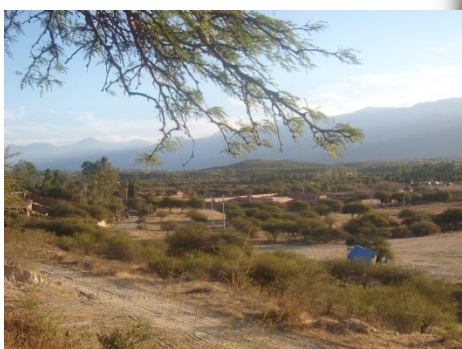
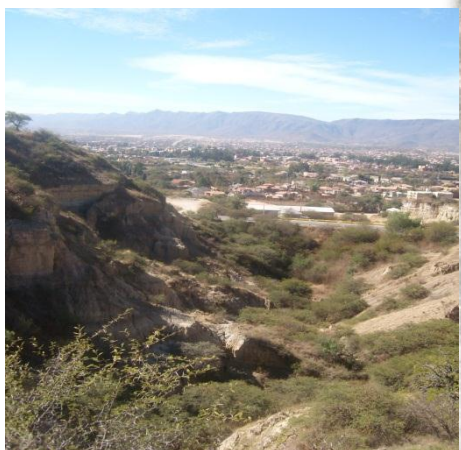


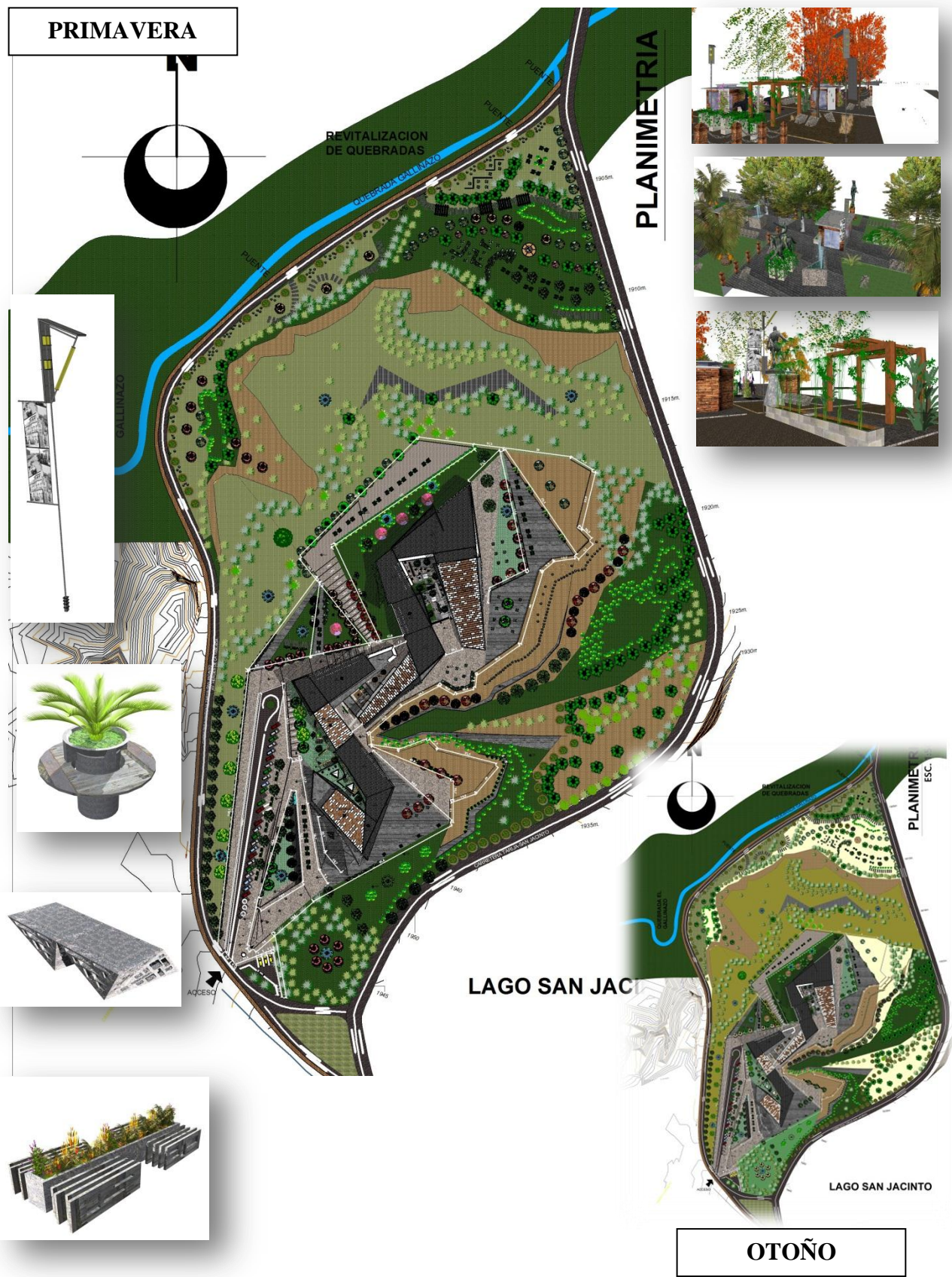
## 11. DISEÑO ARQUITECTONICO



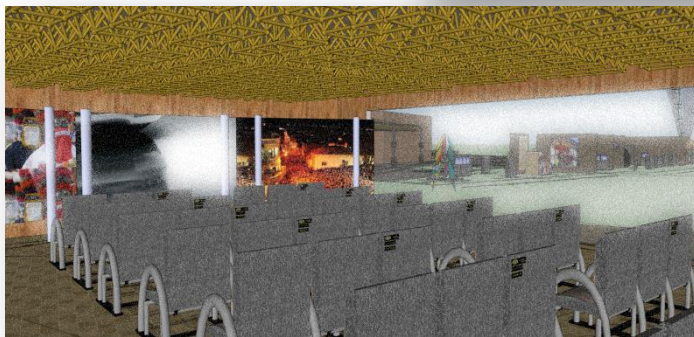
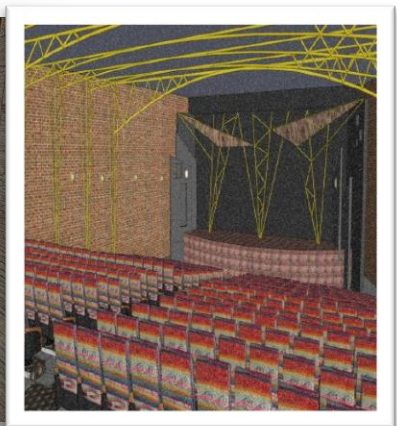
### 11.1. PLANO DE UBICACIÓN Y EMPLAZAMIENTO



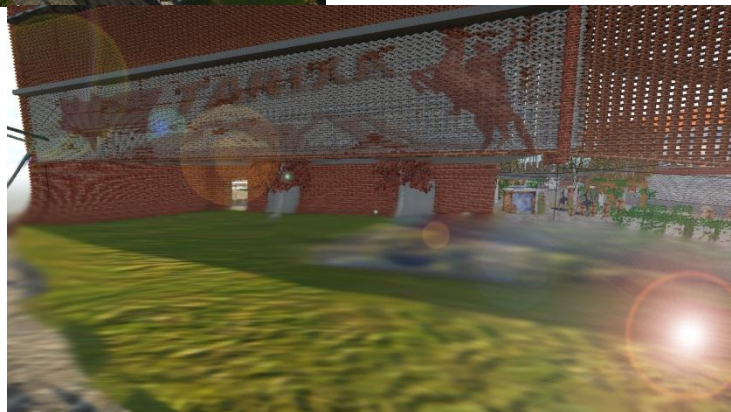
### 11.2. PLANIMETRIA GENERAL



## PERSPECTIVAS INTERIORES



## PERSPECTIVAS EXTERIORES



**PERSPECTIVAS EXTERIORES DEL ENTORNO:**

**PRIMAVERA-(MARZO-JUNIO); OTOÑO (SEPTIEMBRE-DICIEMBRE)**

