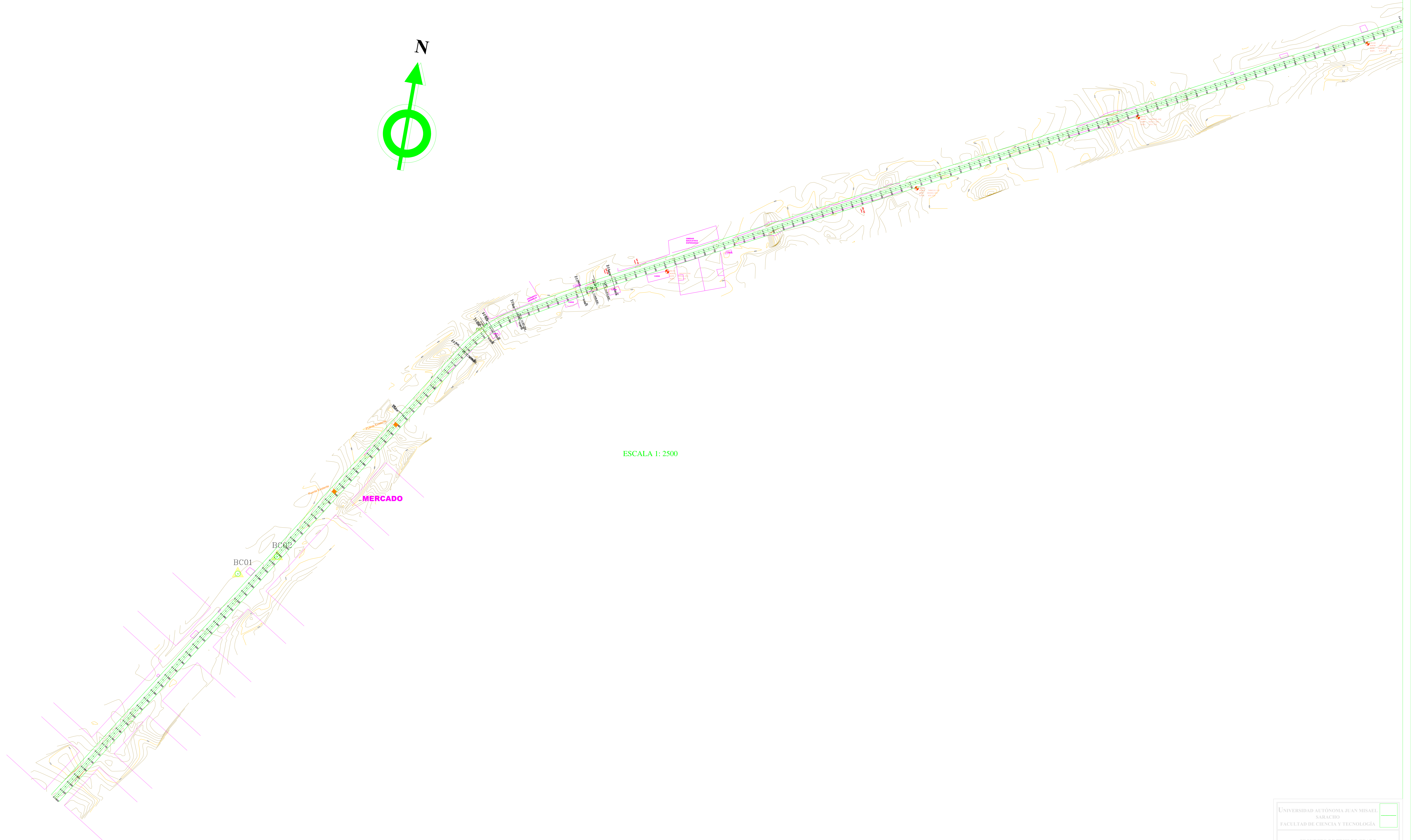
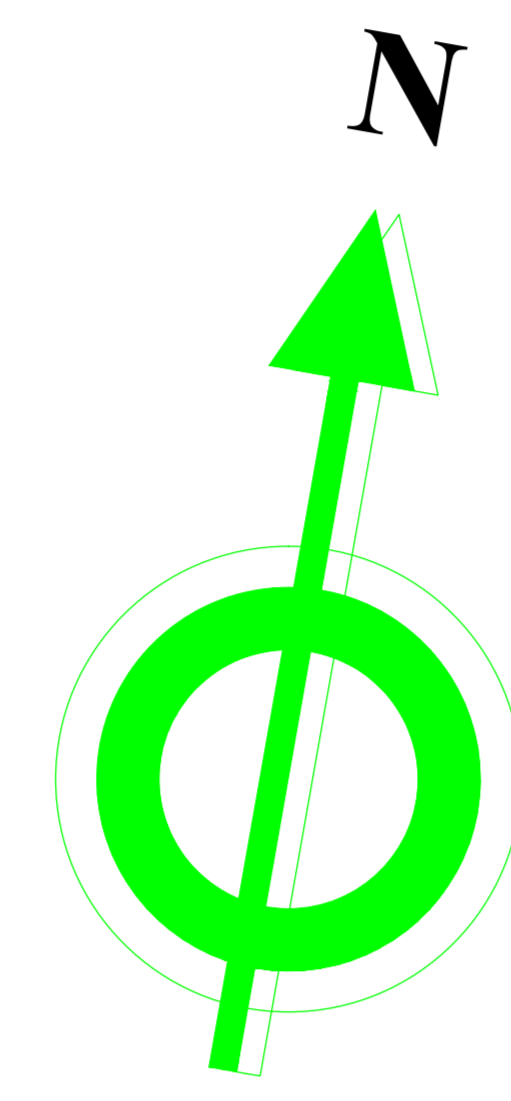
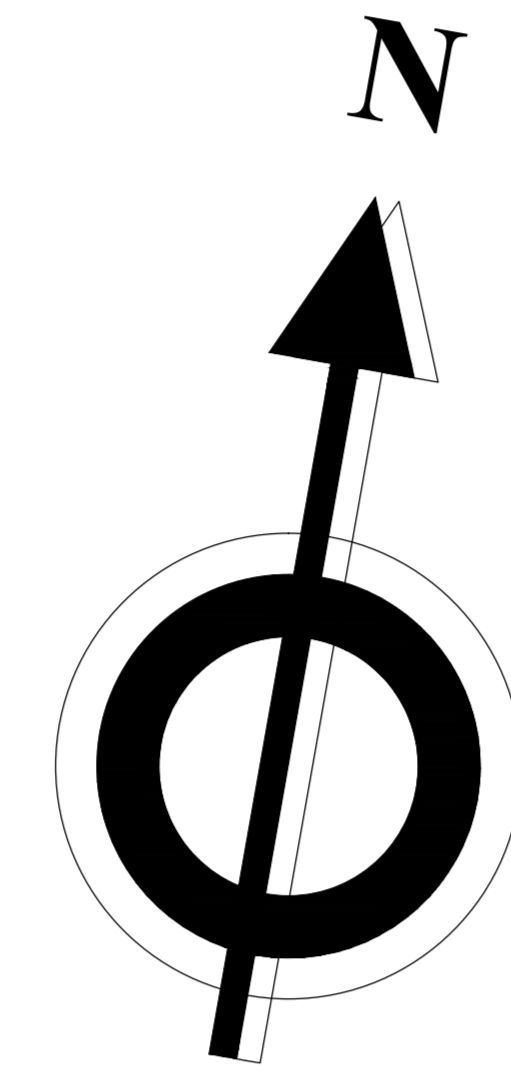


VISTA EN PLANTA



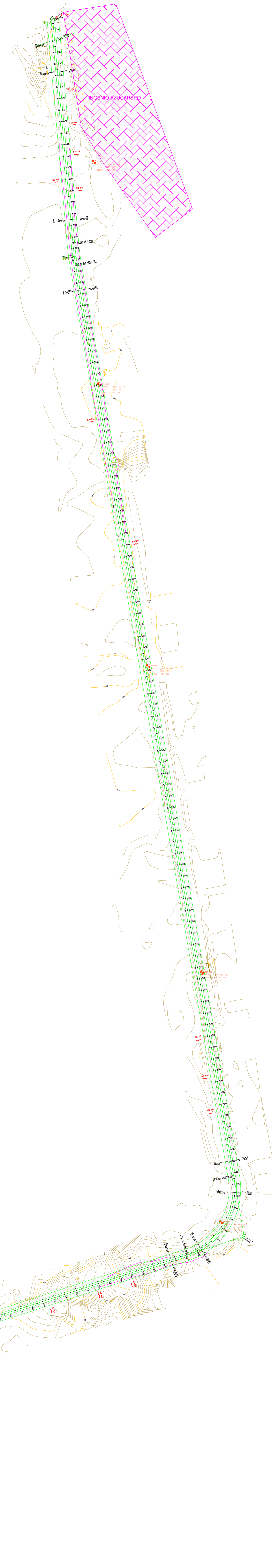
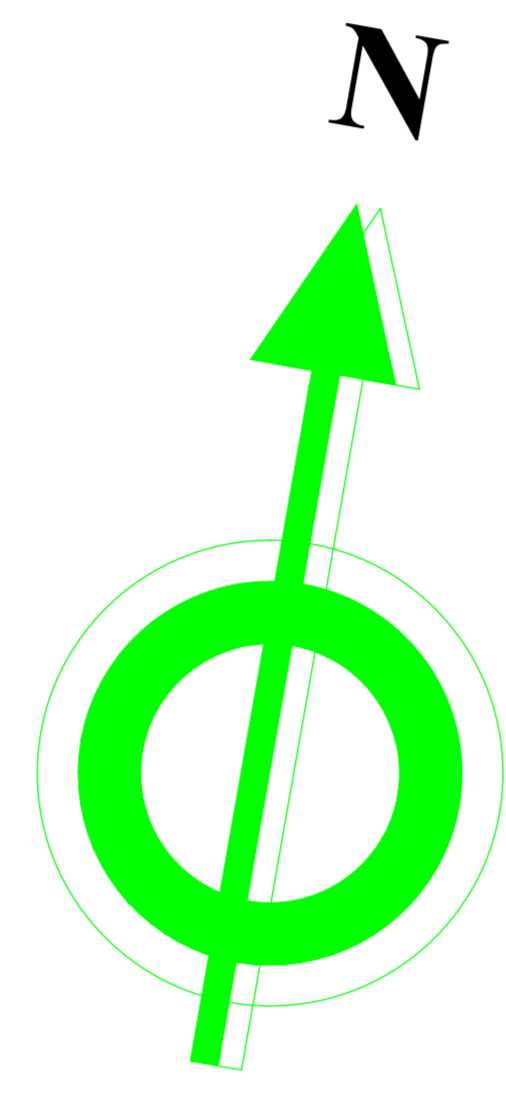
ESCALA 1: 2500

VISTA EN PLANTA



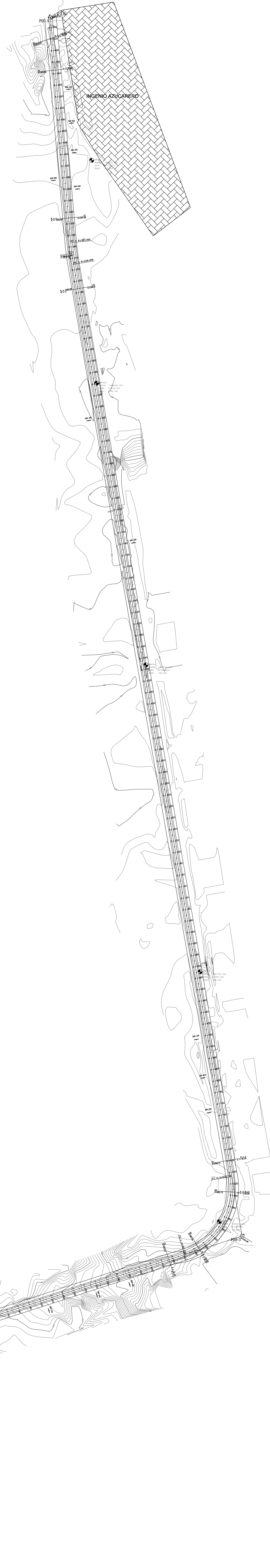
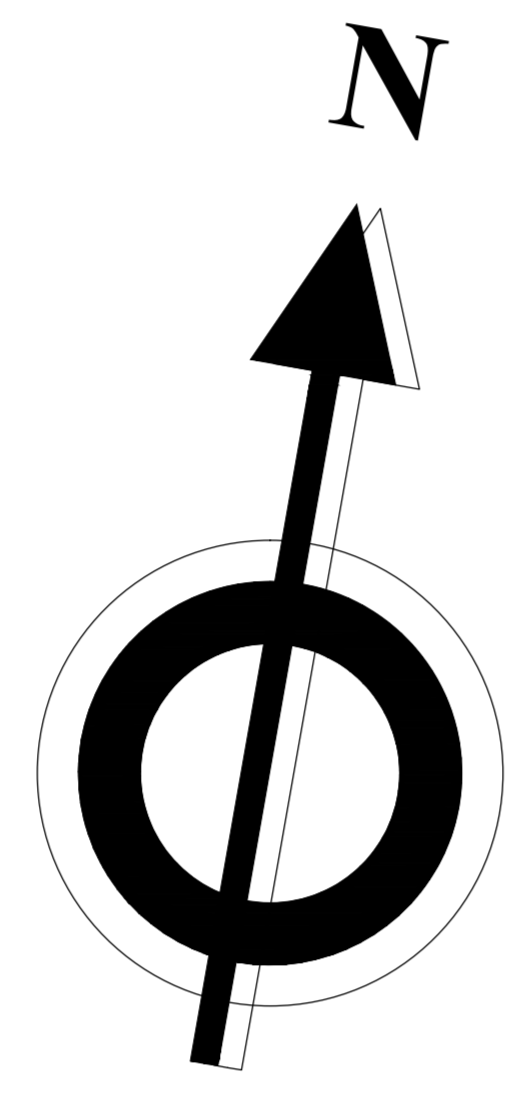
ESCALA 1: 2500

VISTA EN PLANTA



ESCALA 1: 2500

VISTA EN PLANTA



ESCALA 1: 2500

UNIVERSIDAD AUTÓNOMA JUAN MISAEL SARACHO	
FACULTAD DE CIENCIA Y TECNOLOGÍA	
PROYECTO DE TESIS DE GRADO	
PLANO GENERAL VISTA EN PLANTA BERMEO LOS INGENIOS	N/O/R/C
ELABORADO POR EL TITULAR	2/2
RICHARD SERRANO ALMAZAN	