



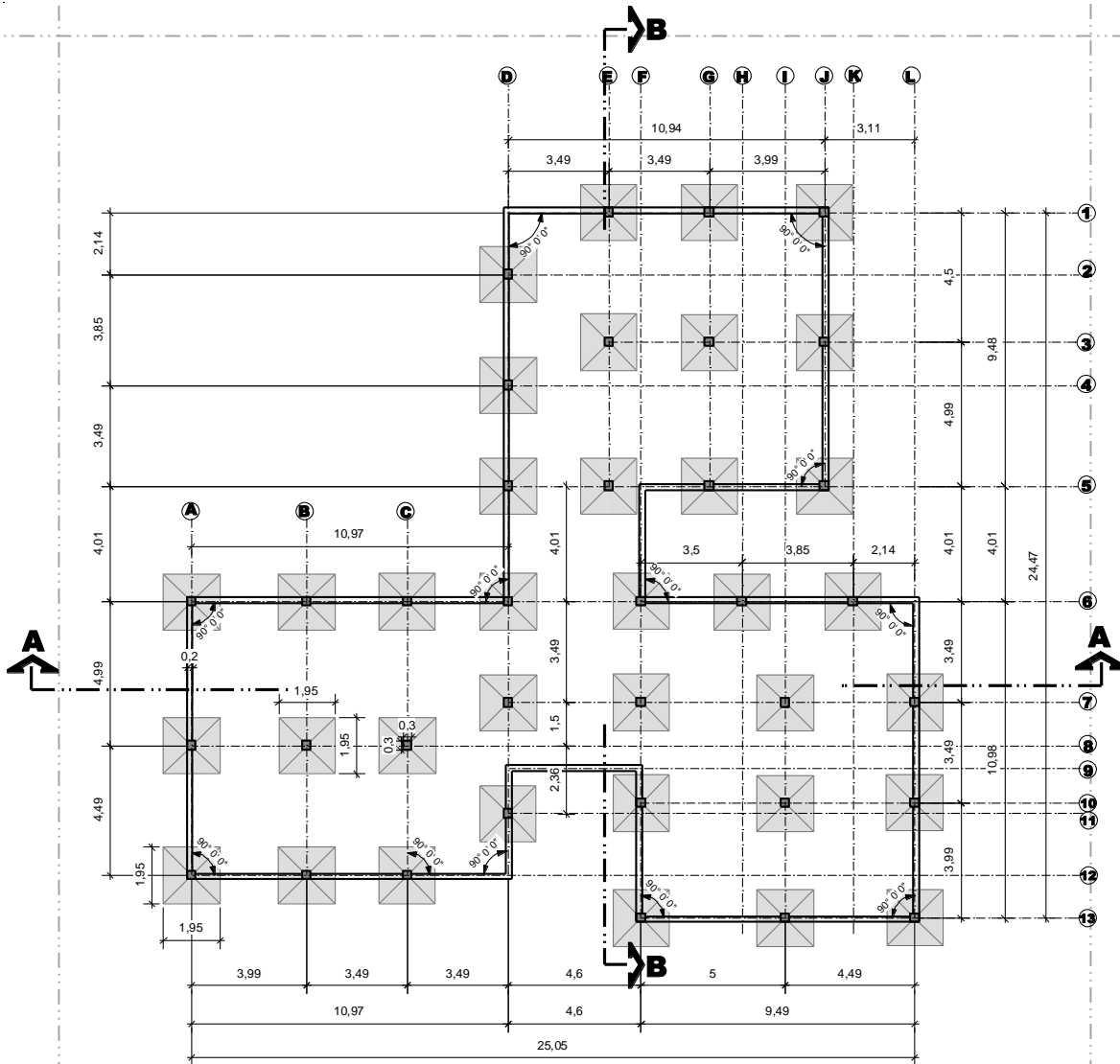
UNIDAD IV

PLANOS ARQUITECTONICOS





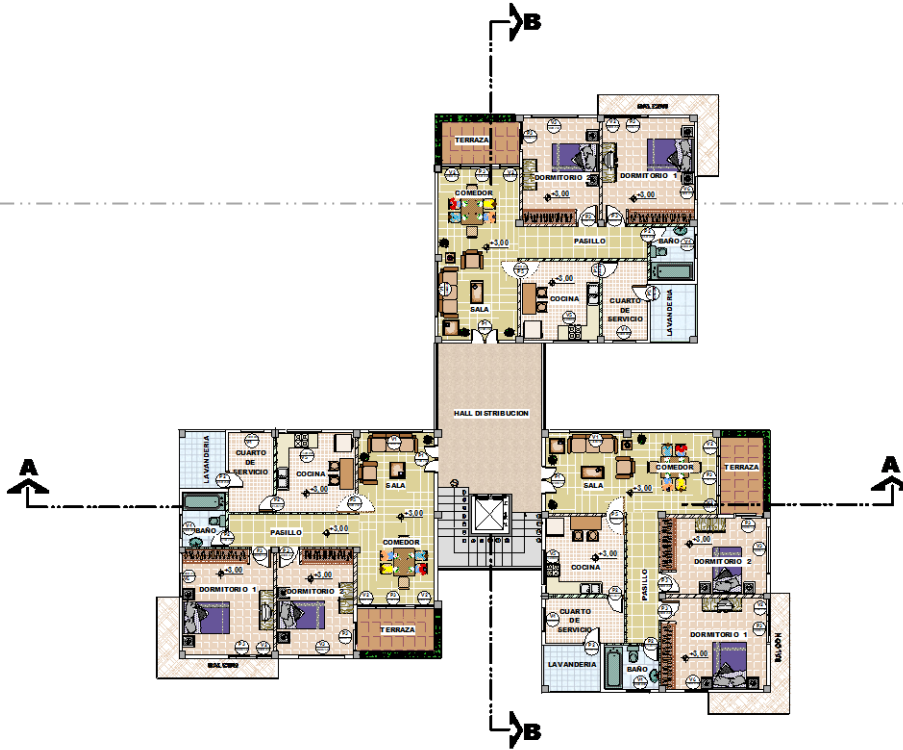
CIMENTOS



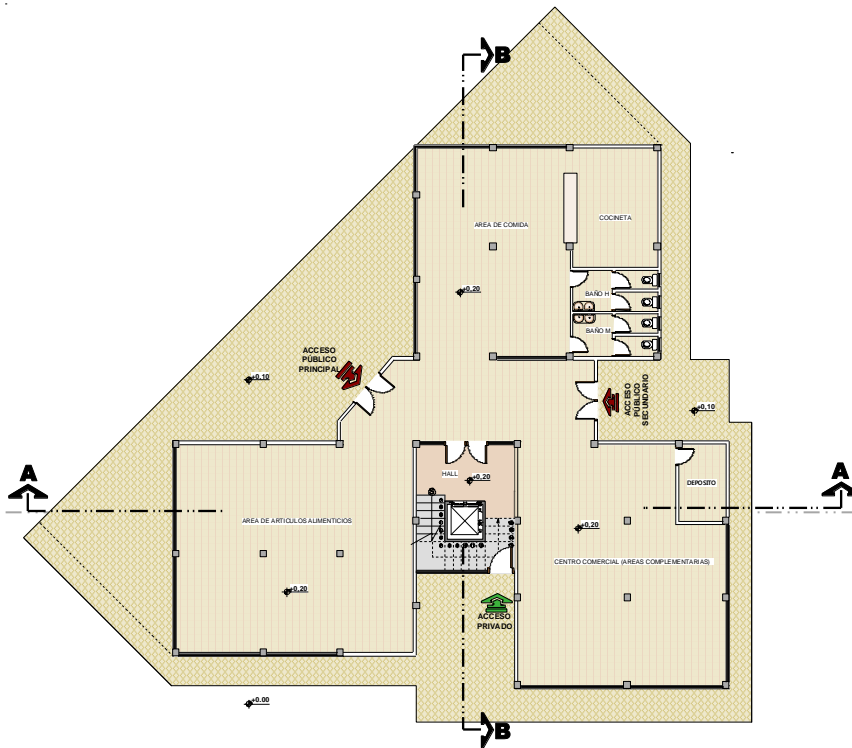
-----... PLANO CIMIENTOS TORRE ... -----



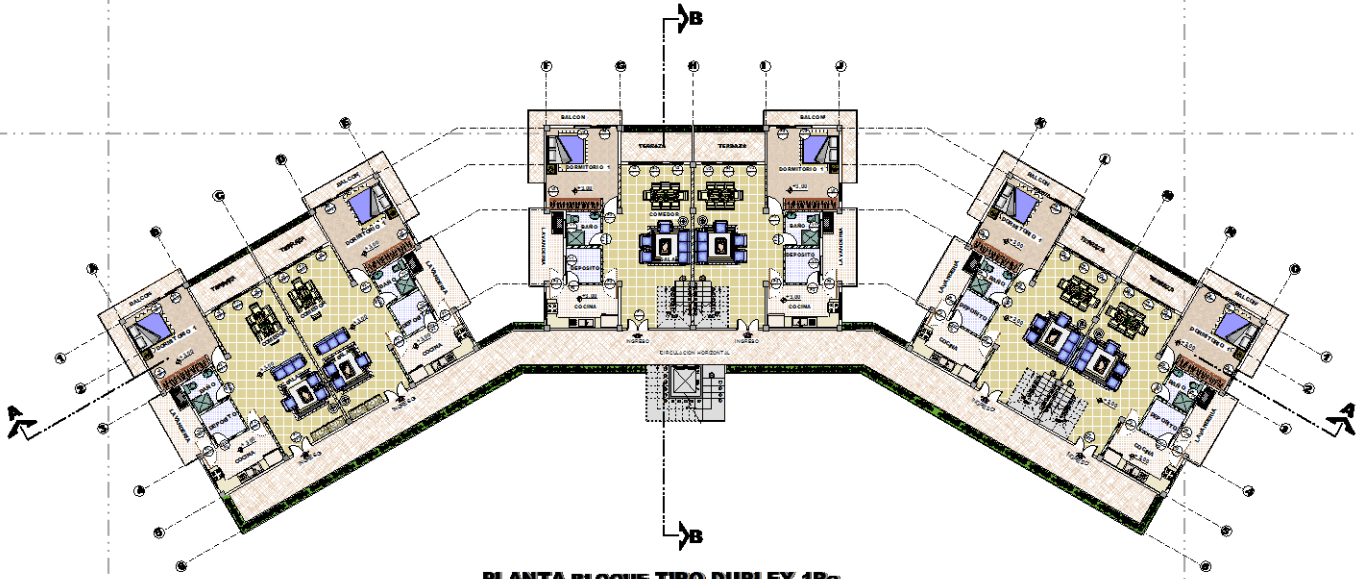
PLANTAS TIPO



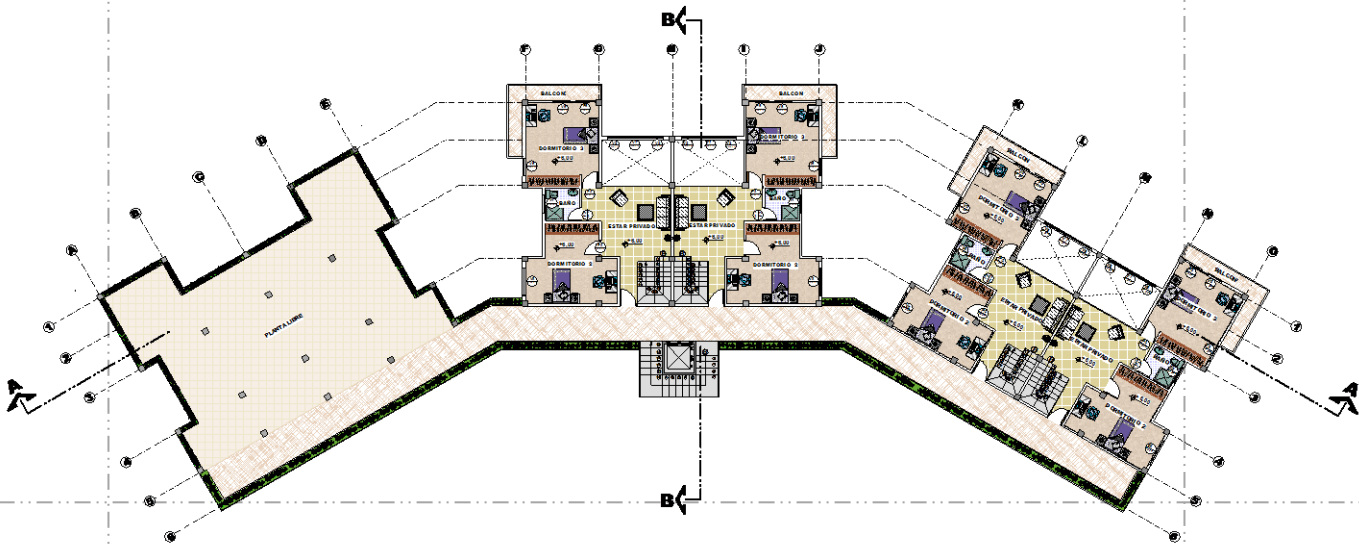
---... PLANTA TIPO 1Er - 2Do - 4to PISO ...---



---... PLANTA BAJA (BASAMENTO) ...---



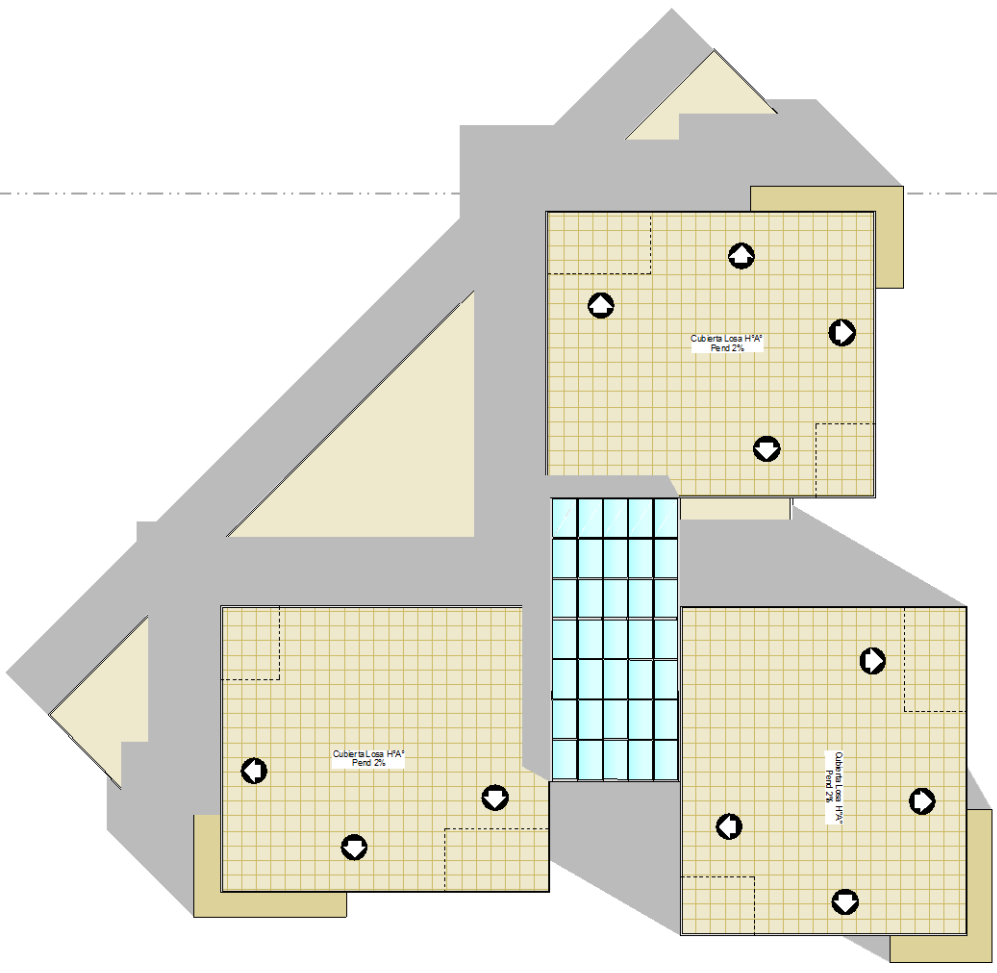
PLANTA BLOQUE TIPO DUPLEX 1Ra



PLANTA BLOQUE TIPO DUPLEX 2Da



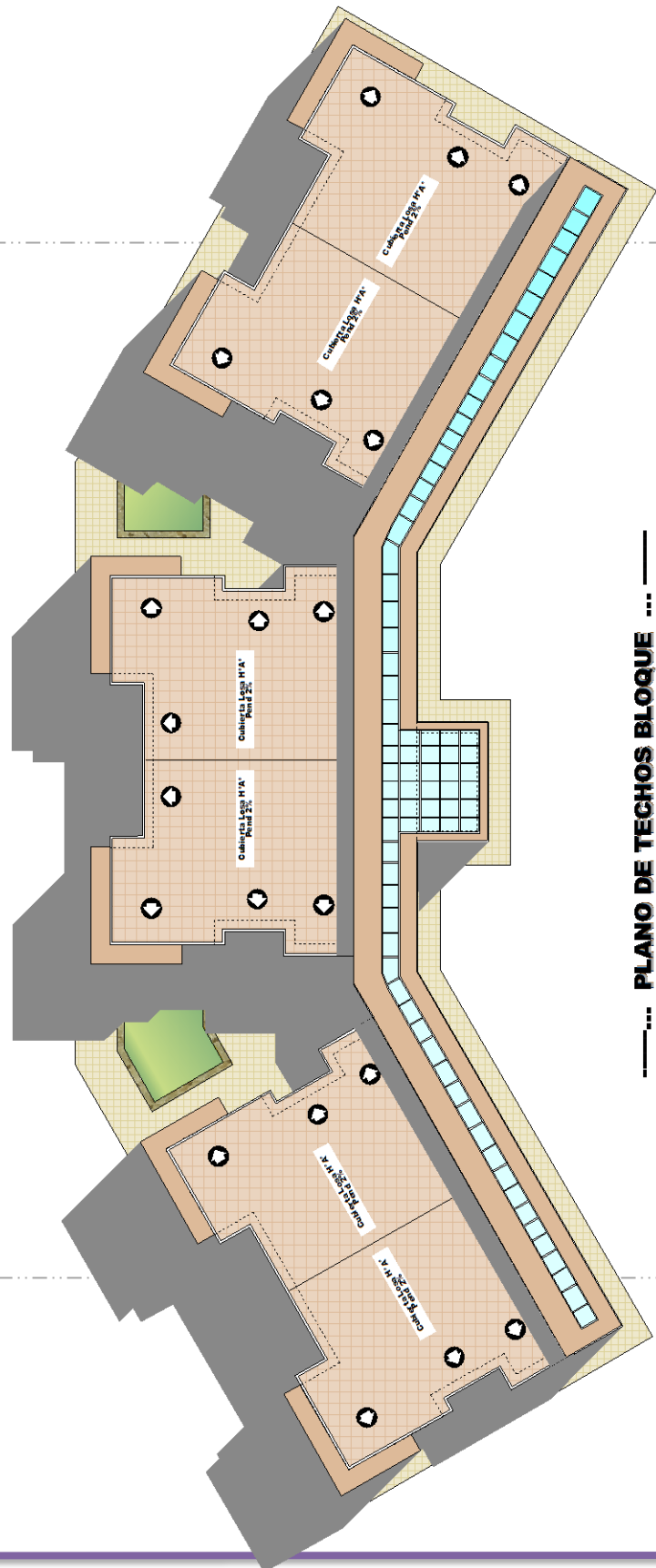
CUBIERTAS



----- PLANO DE TECHOS TORRE -----

PROYECTO DE GRADO TES-501



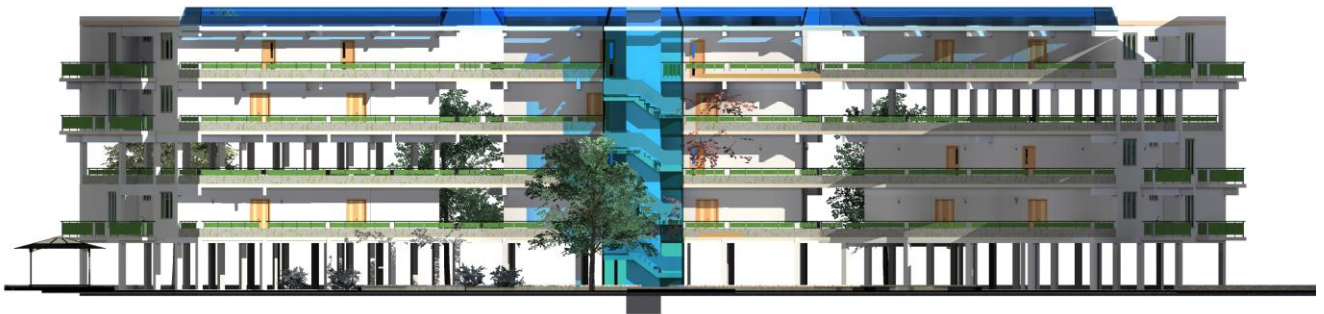


---... PLANO DE TECHOS BLOQUE ... ---





FACHADAS



PROYECTO DE GRADO TES-501







PERSPECTIVAS EXTERIORES



PROYECTO DE GRADO TES-501



