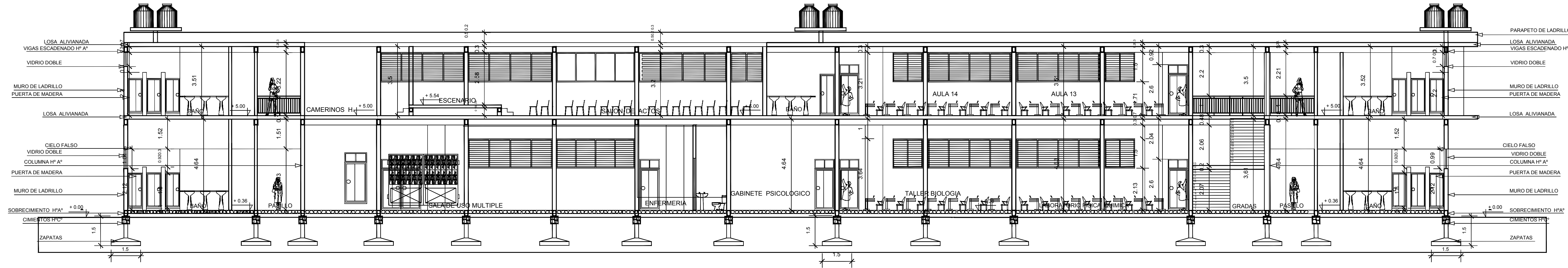
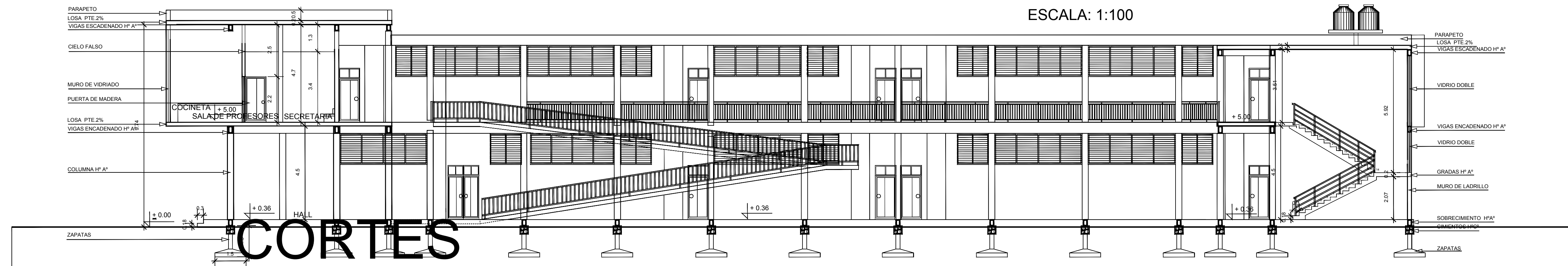


# CORTES

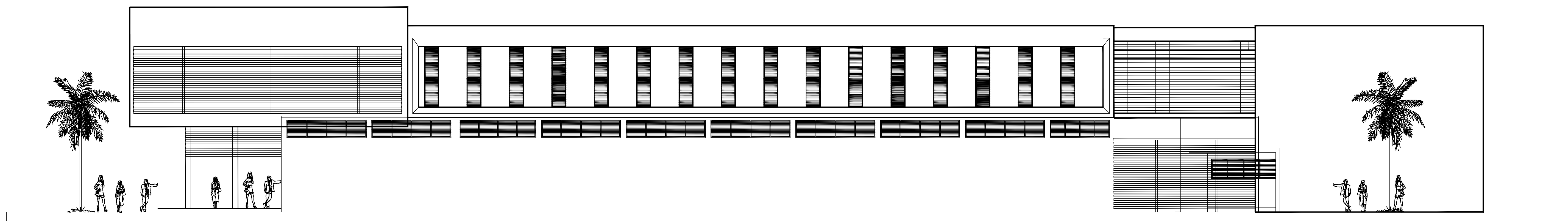


## CORTE A - A



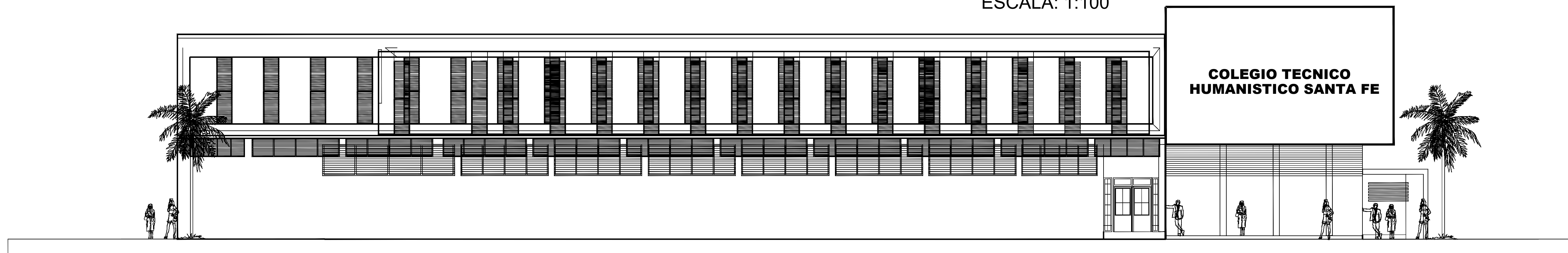
## CORTE B - B

# FACHADAS

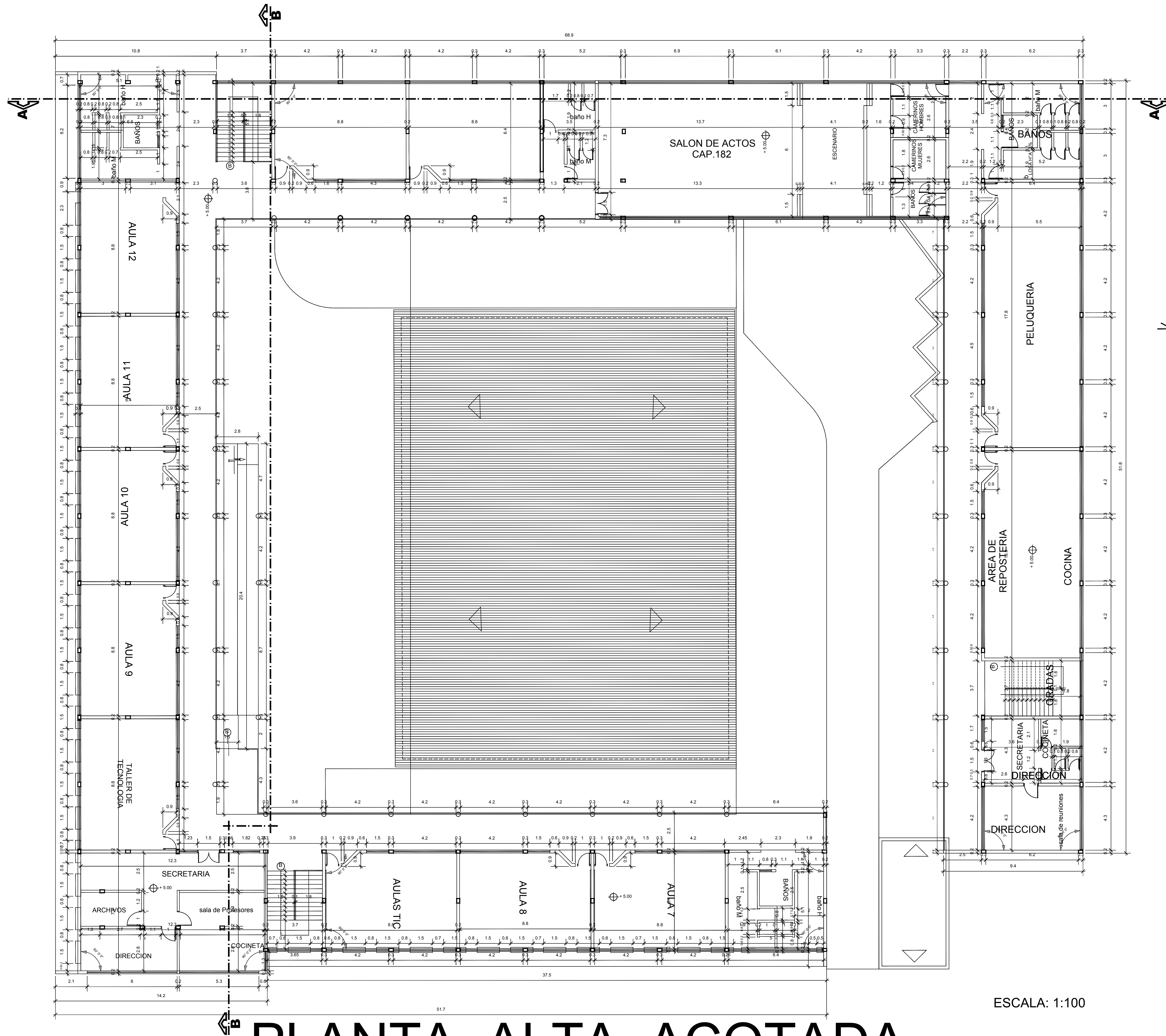


## FACHADA FRONTAL

ESCALA: 1:100



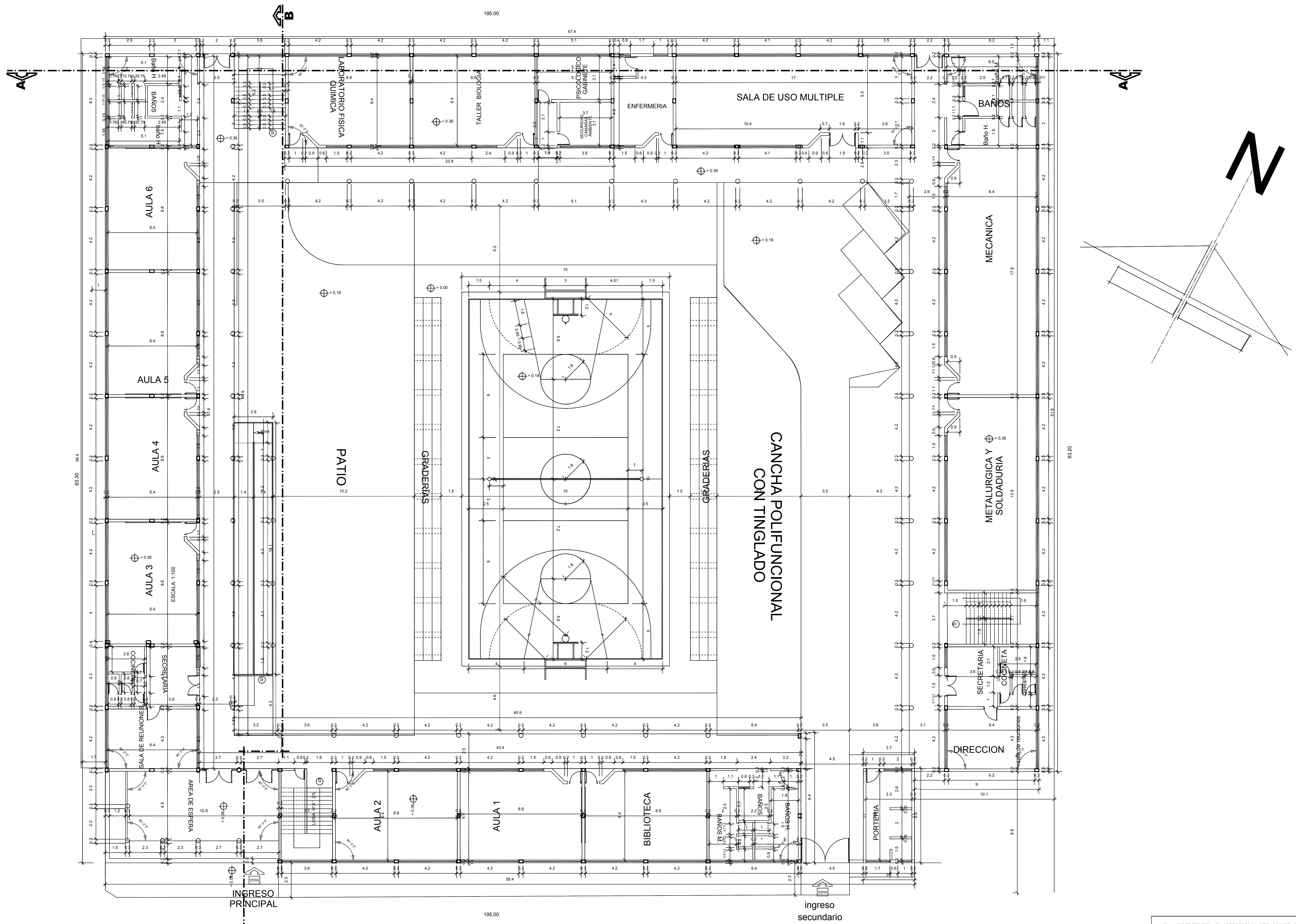
## FACHADA LATERAL



# PLANTA ALTA ACOTADA

ESCALA: 1:100

UNIVERSIDAD AUTÓNOMA "JUAN MISAEL SARACHO" FACULTAD DE CIENCIAS Y TECNOLOGÍA INGENIERÍA CIVIL		COLEGIO TÉCNICO HUMANÍSTICO SANTA FE	
DISEÑO ESTRUCTURAL ESTUDIANTE: ALEX JAIME CHIRI FLORES		CONTENIDO: PLANO DE DISEÑO ARQUITECTÓNICO VISTA EN PLANTA ALTA	
VoBo		ESCALA: 1:100	LAMINA: 3 / 34
FECHA: MAYO 2022			

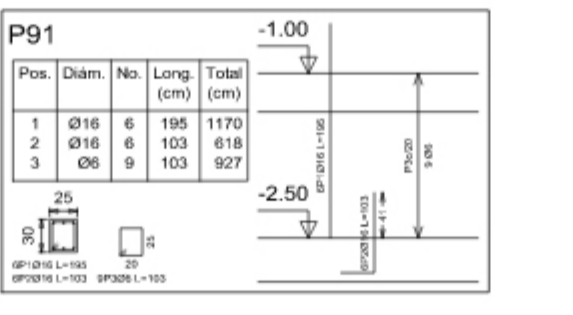
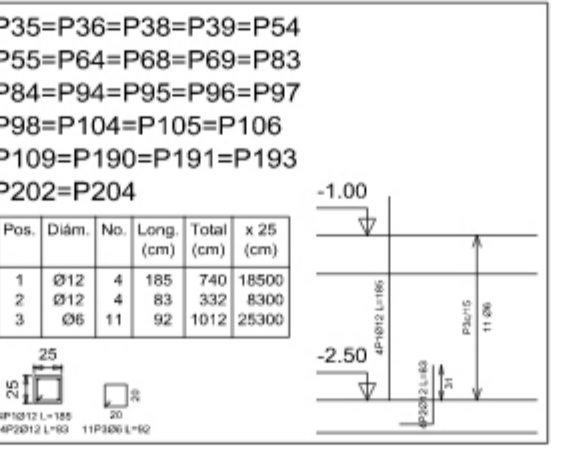
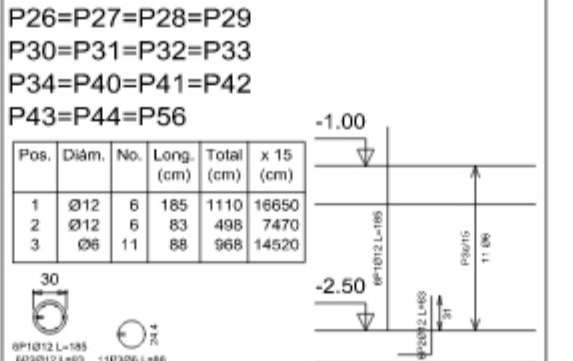
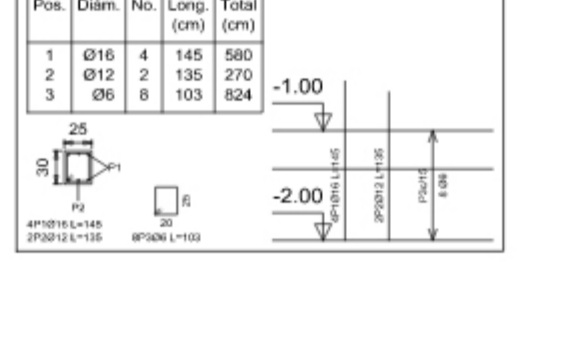
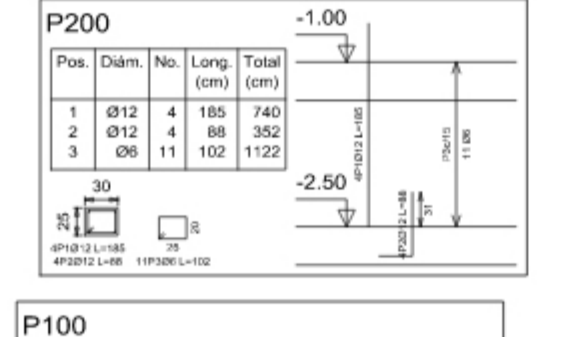
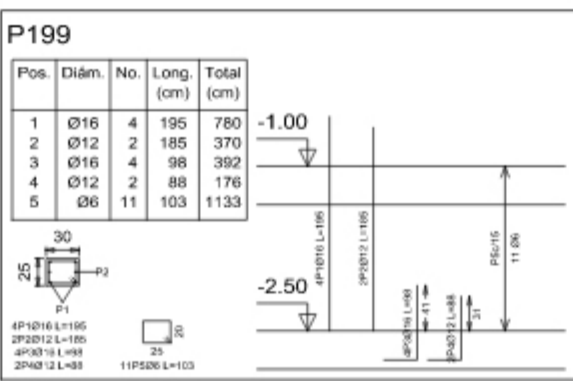
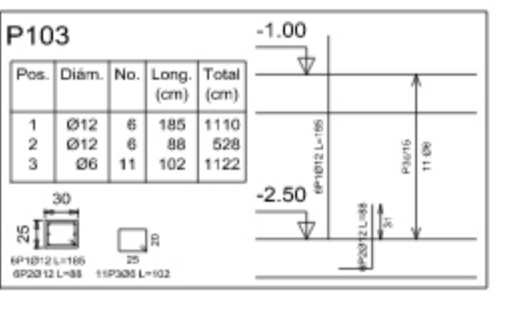
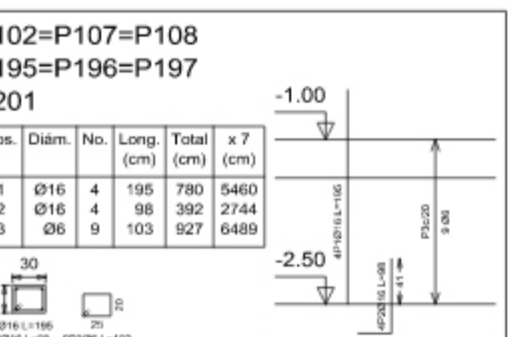
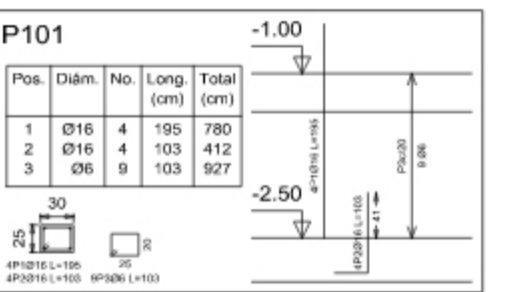


# PLANTA BAJA ACOTADA

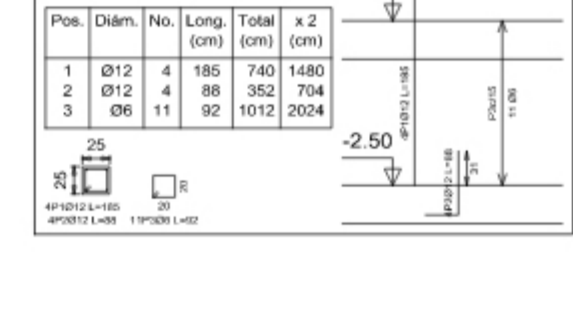
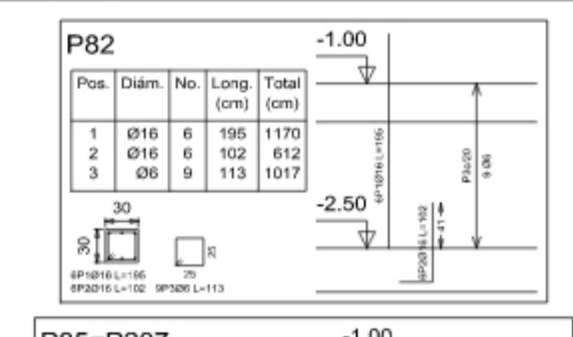
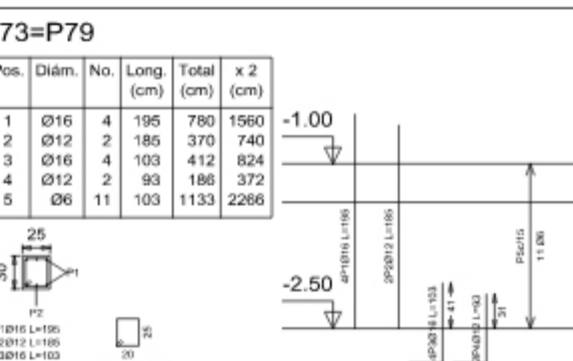
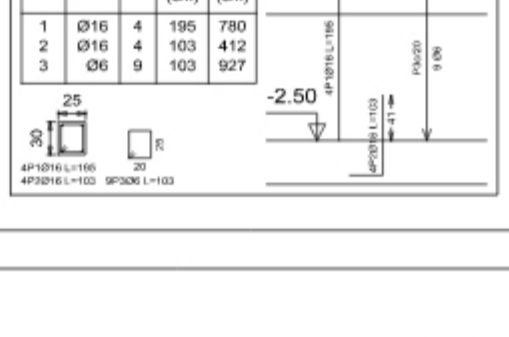
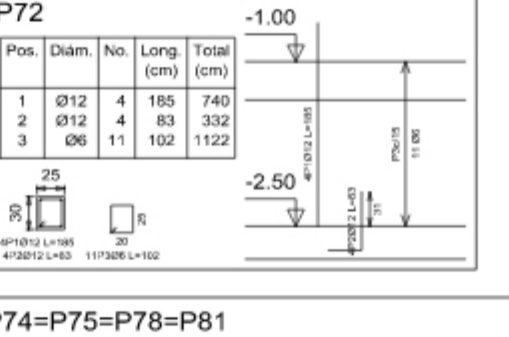
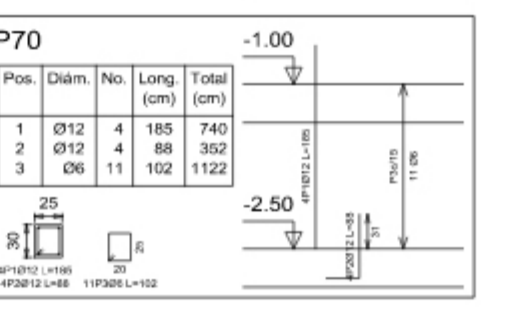
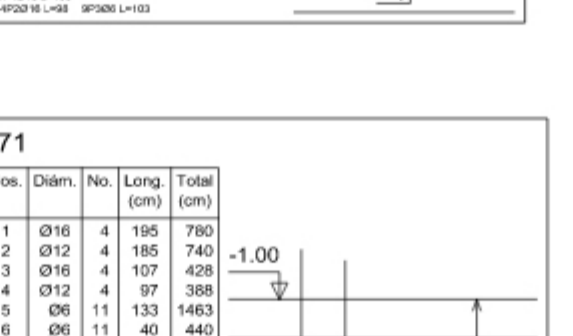
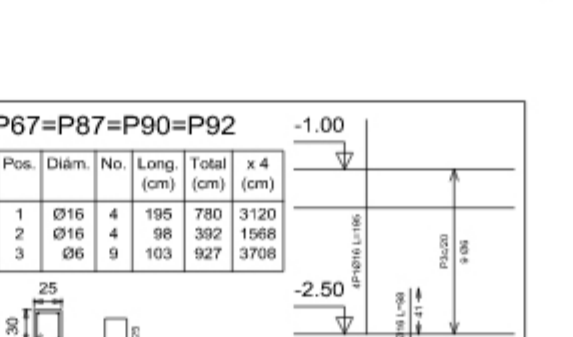
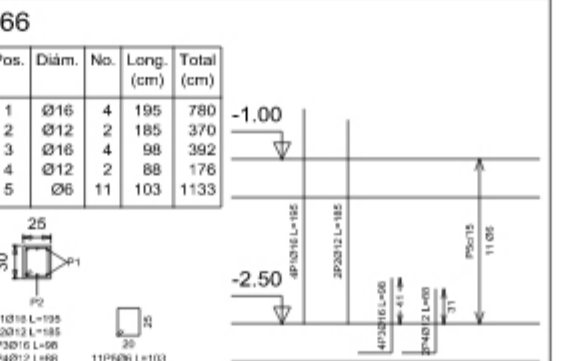
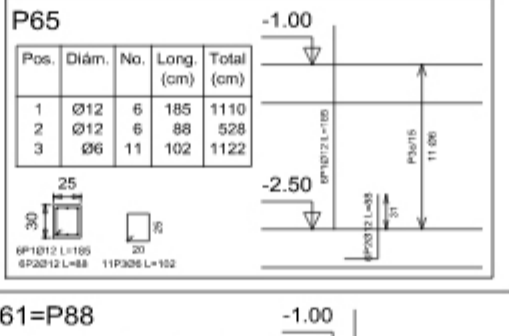
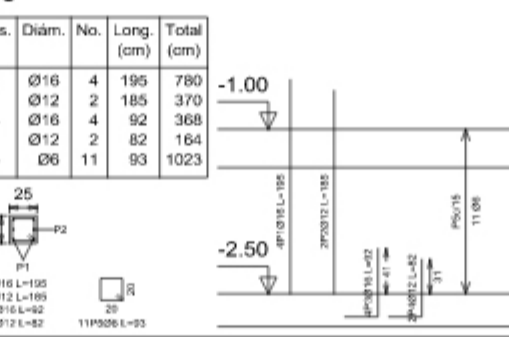
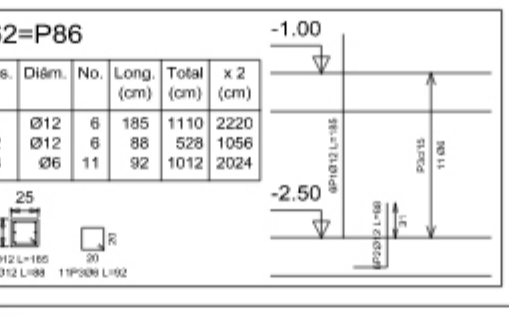
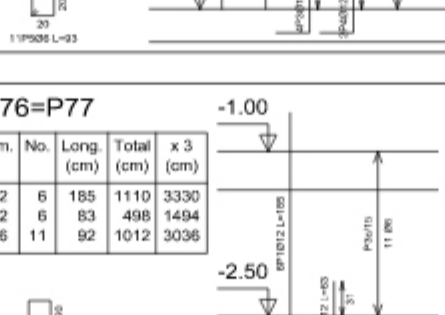
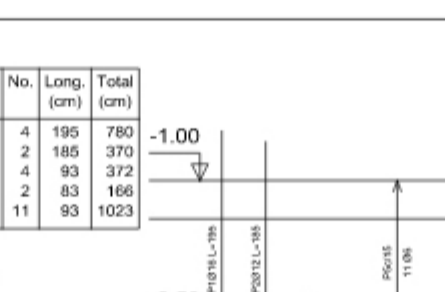
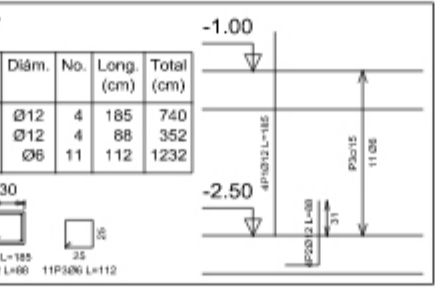
ESCALA: 1:100

UNIVERSIDAD AUTÓNOMA "JUAN MISAEL SARACHO" FACULTAD DE CIENCIAS Y TECNOLOGÍA INGENIERÍA CIVIL	
DISEÑO ESTRUCTURAL COLEGO TÉCNICO HUMANÍSTICO SANTA FE	CONTENIDO: PLANO DE DISEÑO ARQUITECTÓNICO VISTA EN PLANTA BAJA
ESTUDIANTE: ALEX JAIME CHIRI FLORES	ESCALA: 1:100
VoBo	FECHA: MAYO 2022
LAMINA: 2 / 34	

Pilares que terminan en planta baja 3  
 Hormigón: H-25 , Control Normal  
 Acero: AH-500 , Control Normal  
 Escala: 1:50

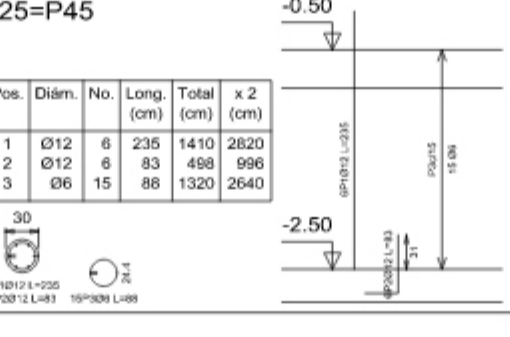
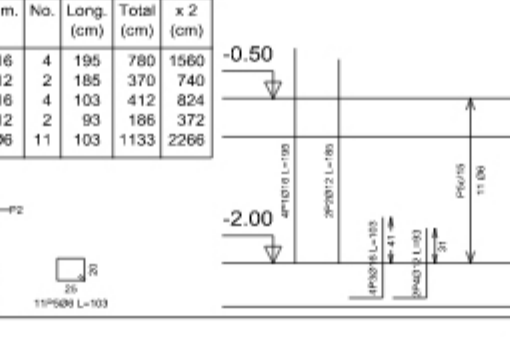
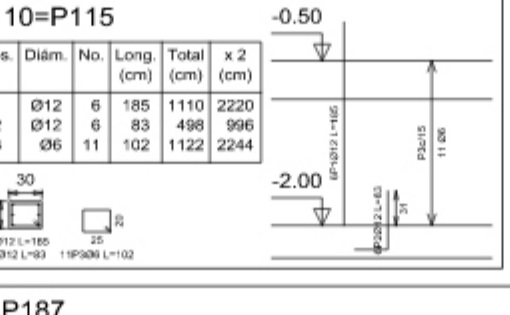
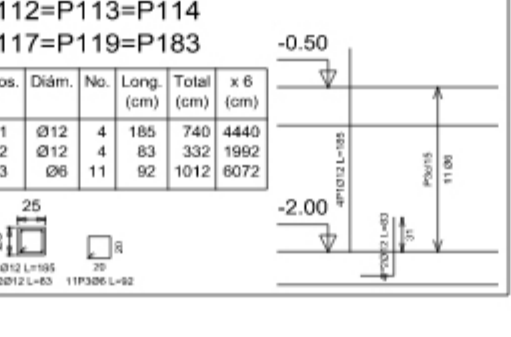
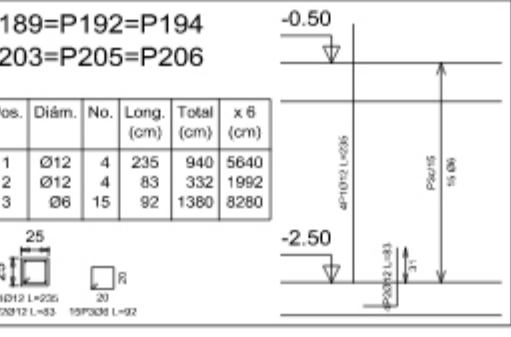
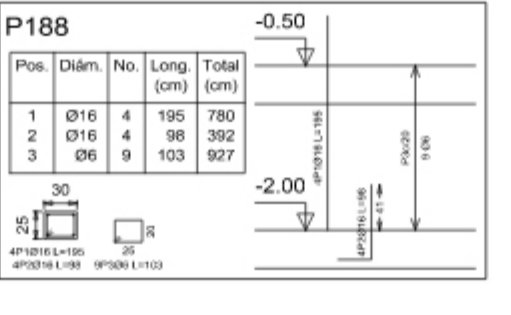
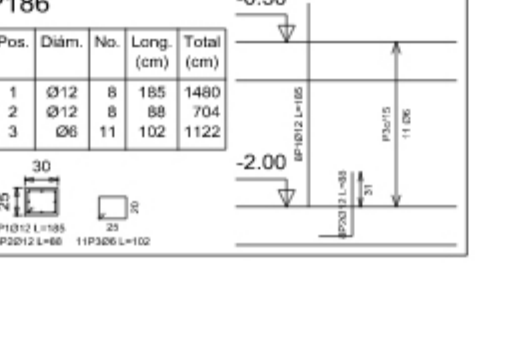
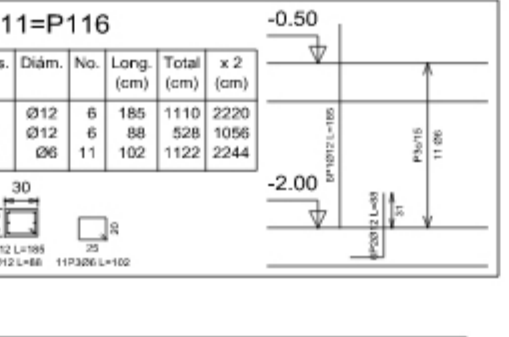
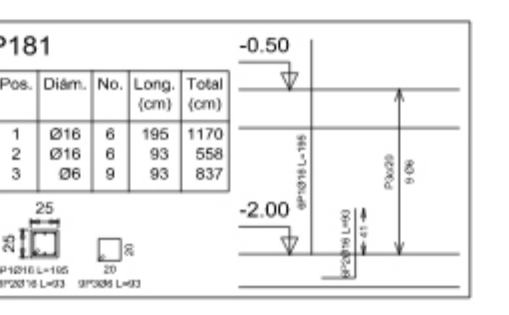
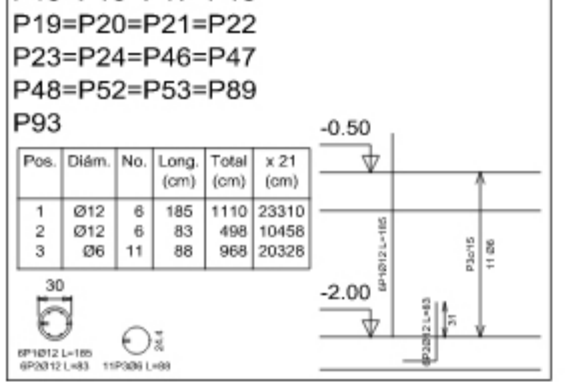
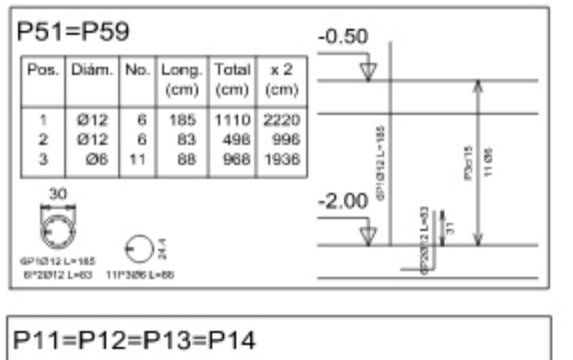


Resumen Acero planta baja 3			
Plazas	Long. total (m)	Peso+10% (kg)	Total
AH-500CN Ø6	837.8	205	
Ø12	816.9	798	
Ø16	296.7	520	1523



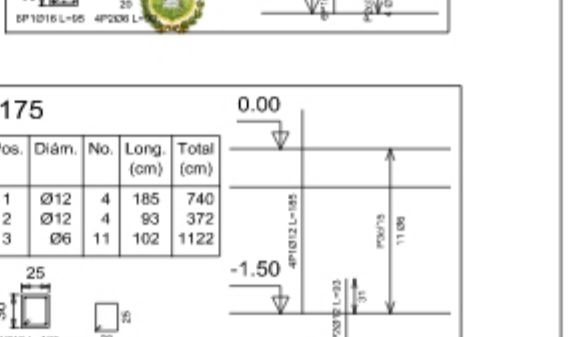
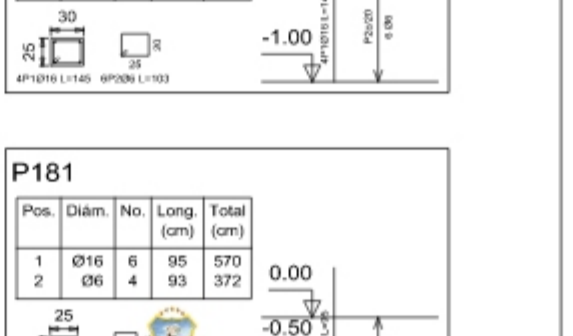
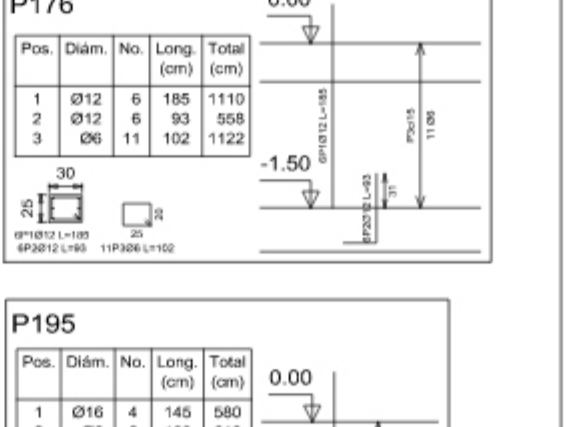
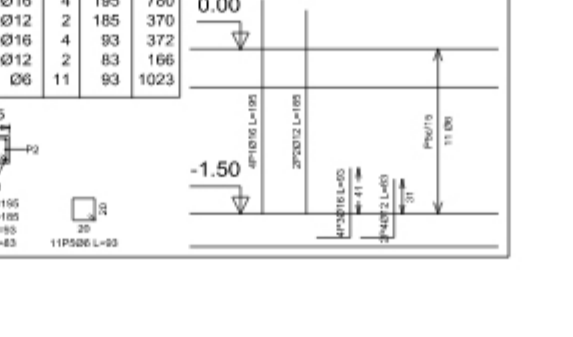
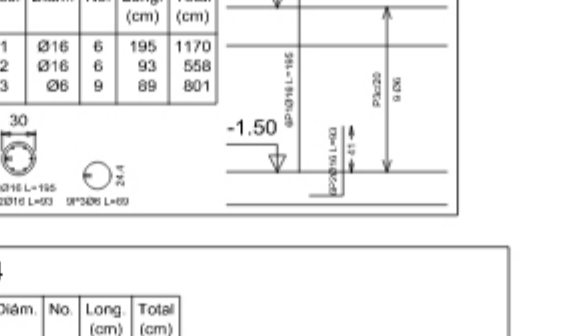
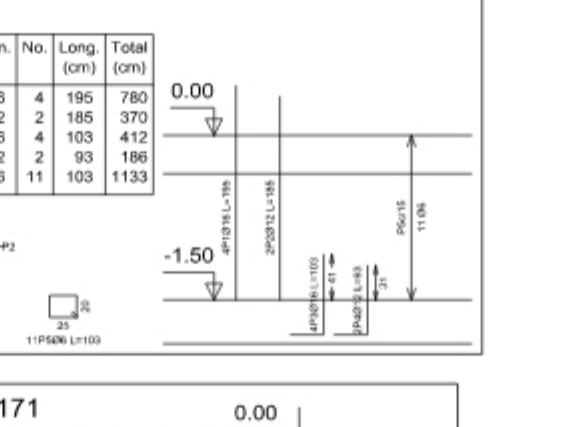
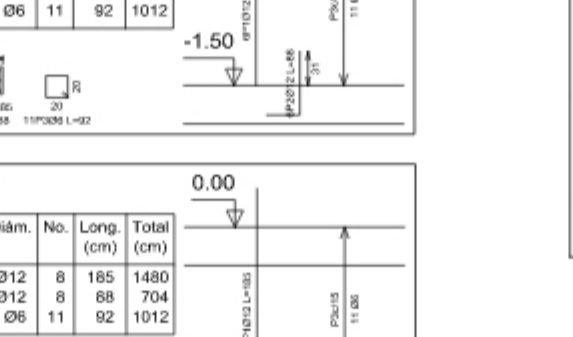
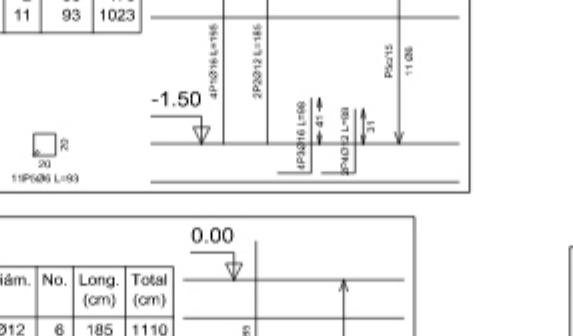
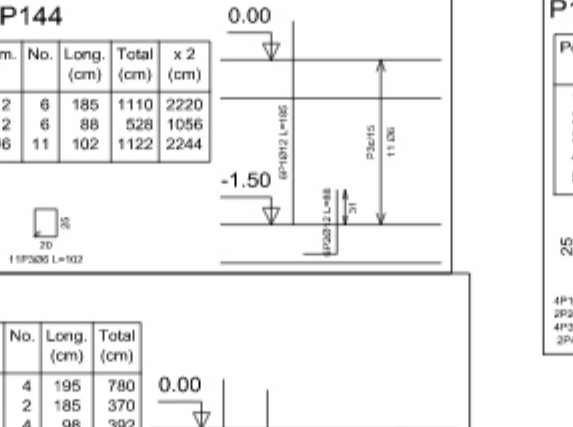
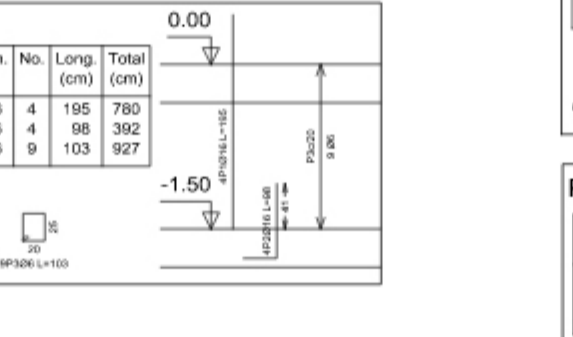
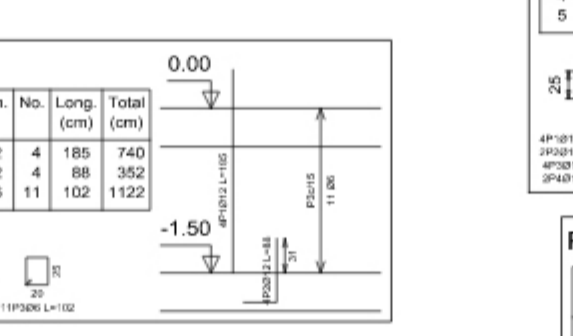
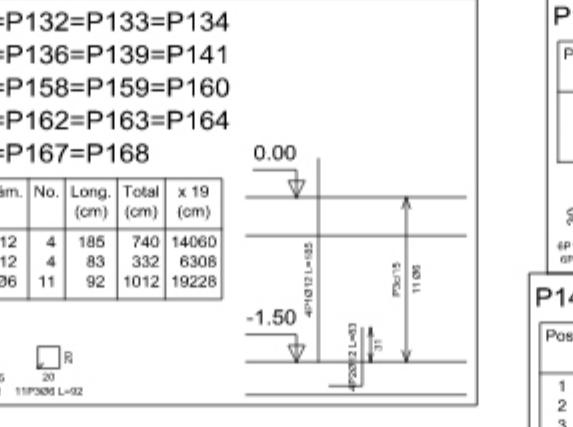
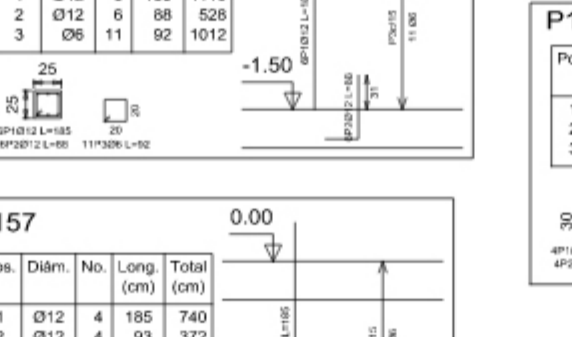
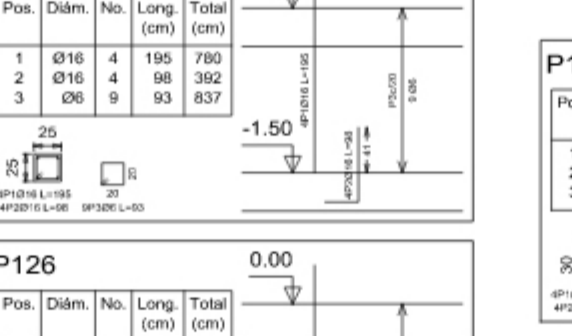
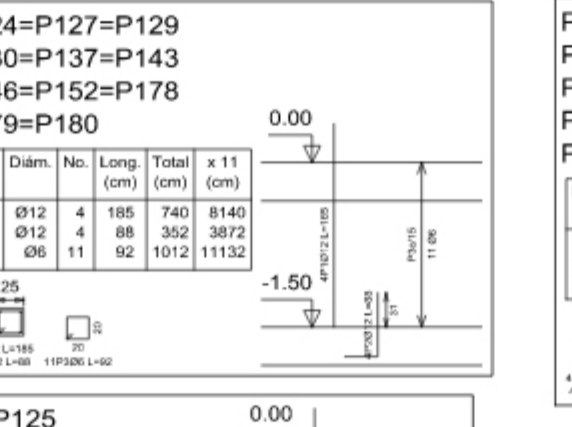
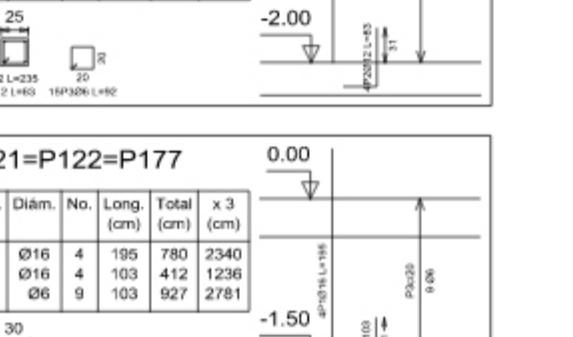
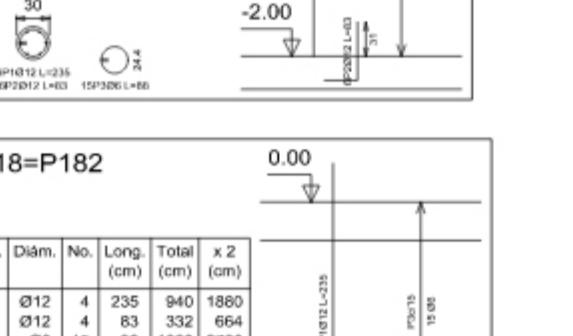
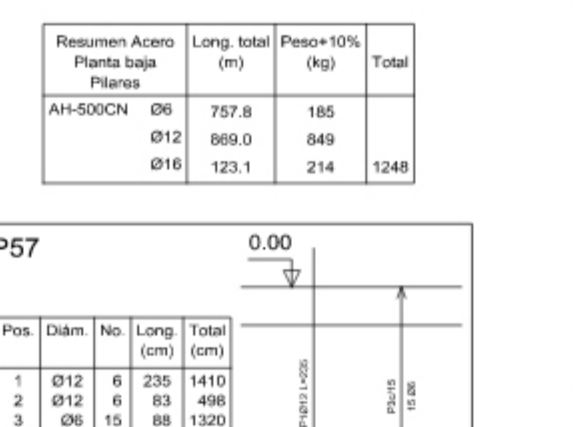
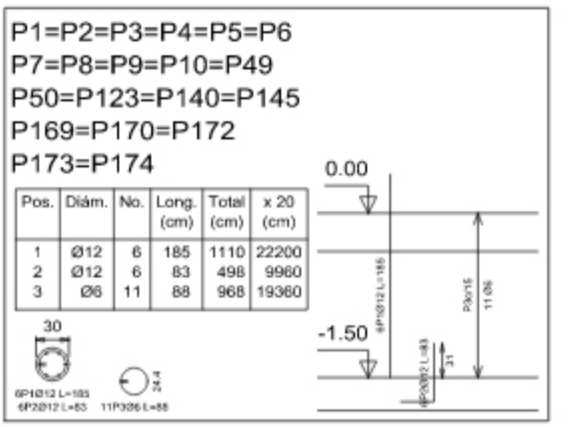
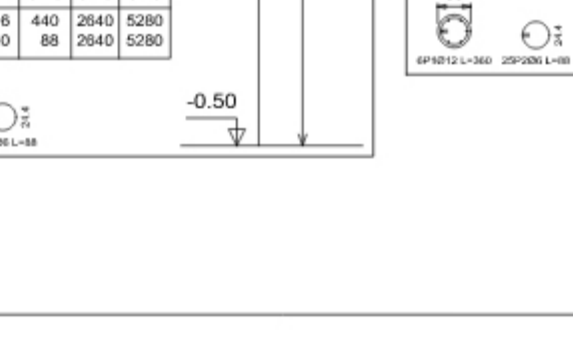
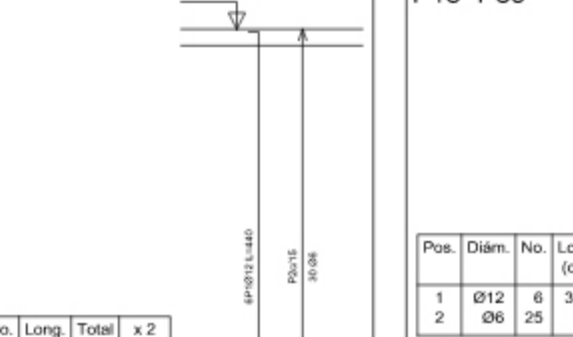
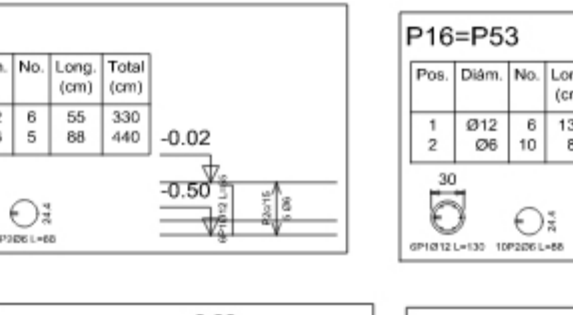
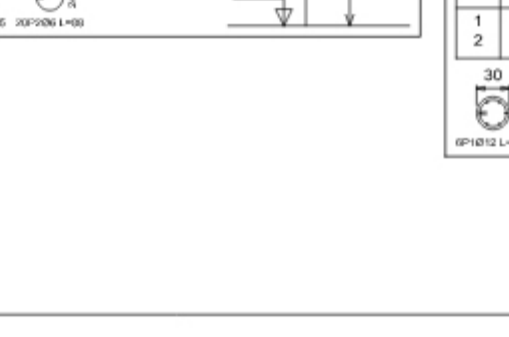
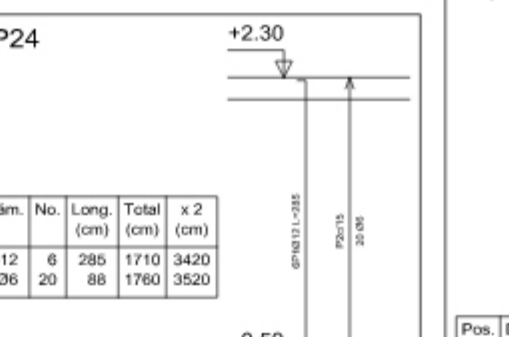
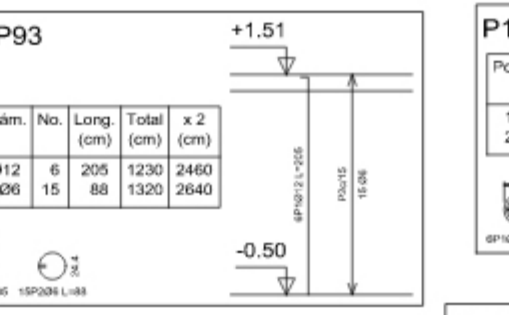
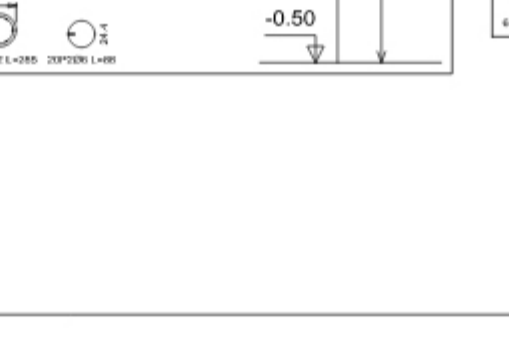
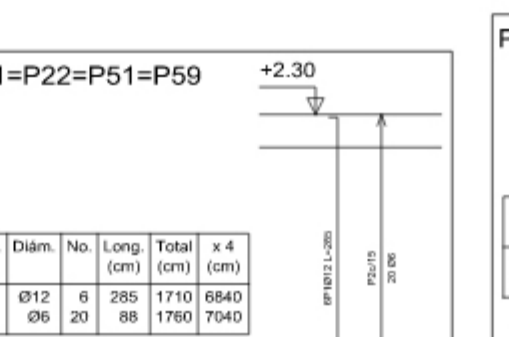
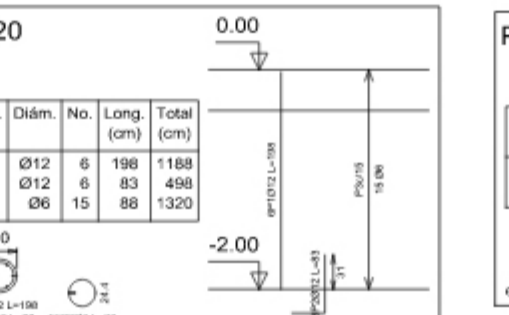
Pilares que terminan en planta baja 2  
 Hormigón: H-25 , Control Normal  
 Acero: AH-500 , Control Normal  
 Escala: 1:50

Resumen Acero planta baja 2			
Plazas	Long. total (m)	Peso+10% (kg)	Total
AH-500CN Ø6	489.0	119	
Ø12	646.5	631	
Ø16	52.8	92	842



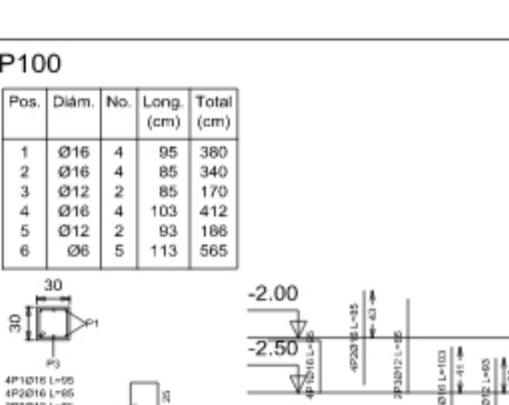
Pilares que terminan en Descanso de rampa  
 Hormigón: H-25 , Control Normal  
 Acero: AH-500 , Control Normal  
 Escala: 1:50

Resumen Acero Descanso de rampa			
Plazas	Long. total (m)	Peso+10% (kg)	Total
AH-500CN Ø6	264.0	64	
Ø12	258.9	253	317



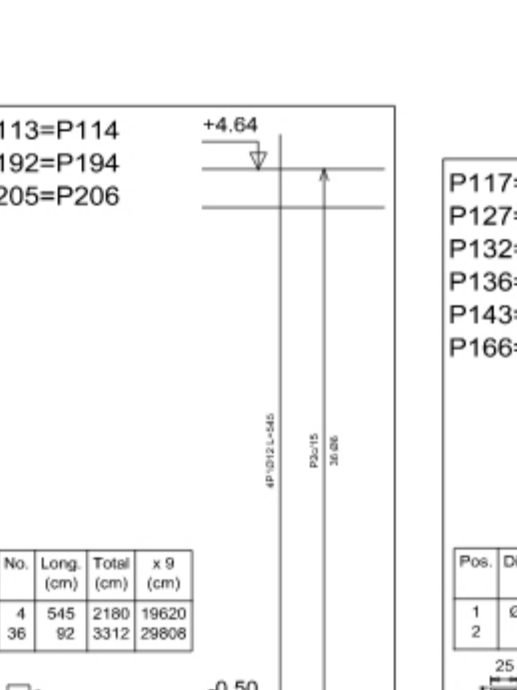
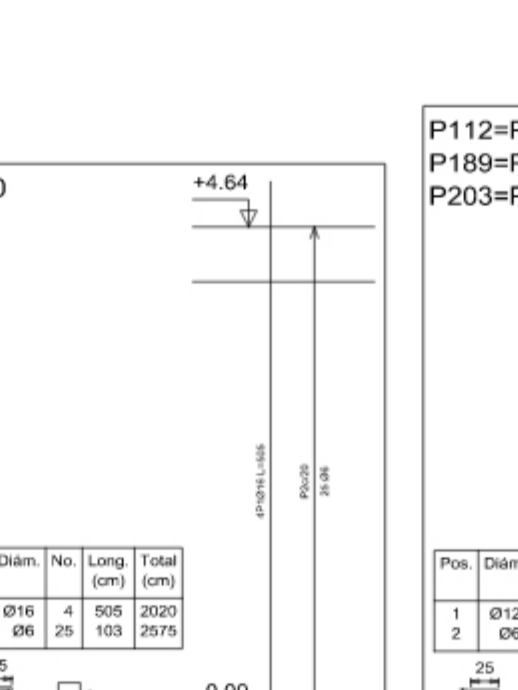
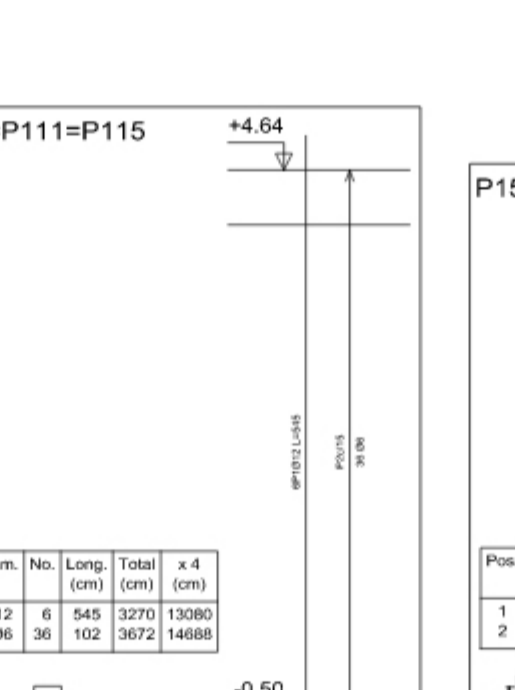
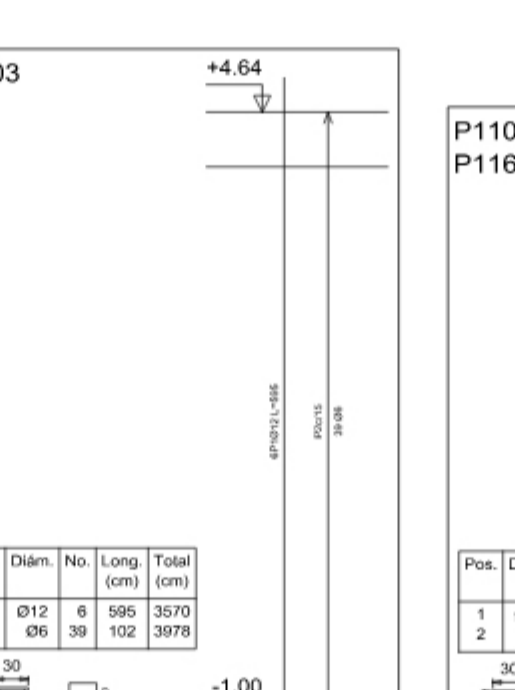
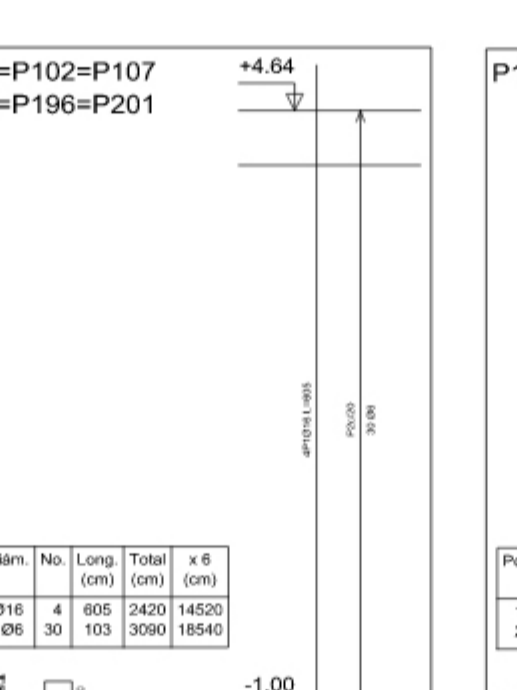
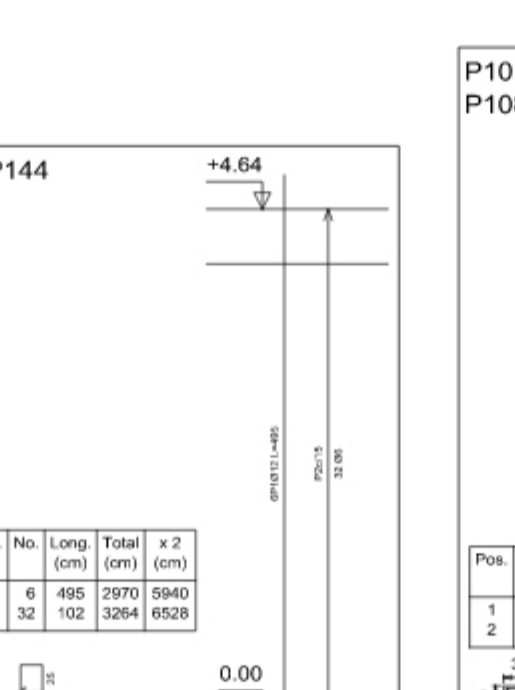
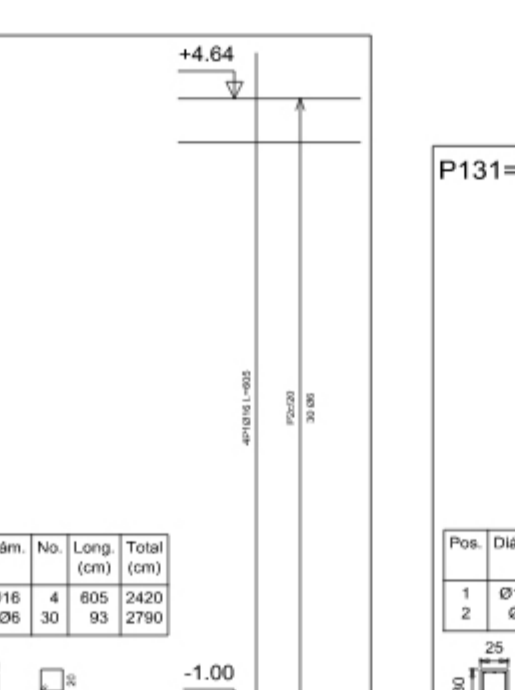
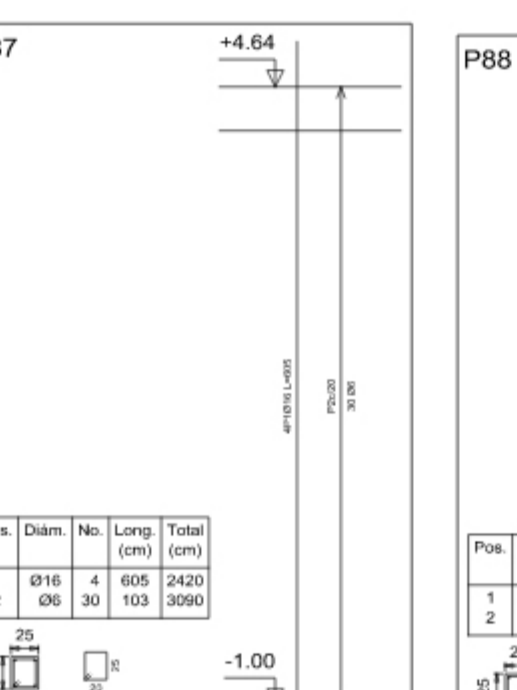
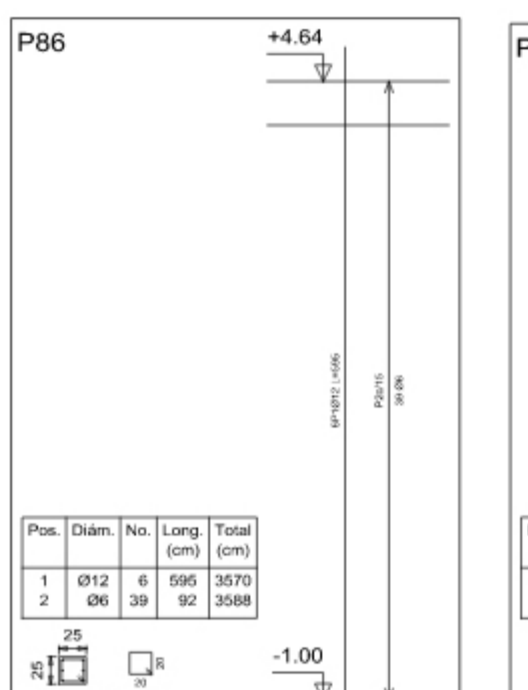
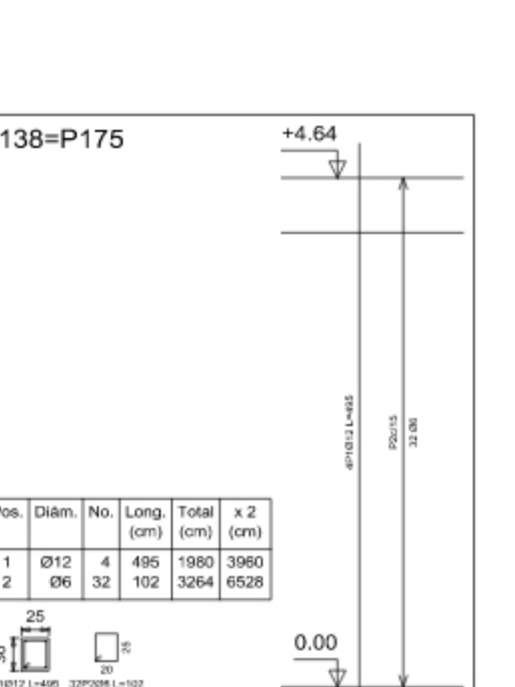
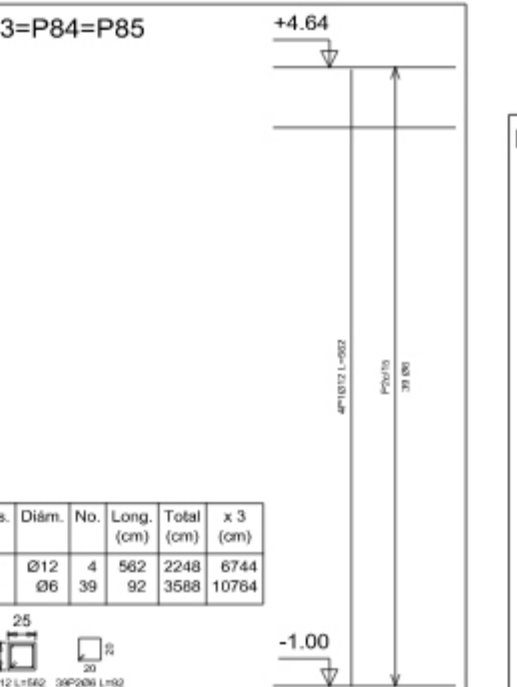
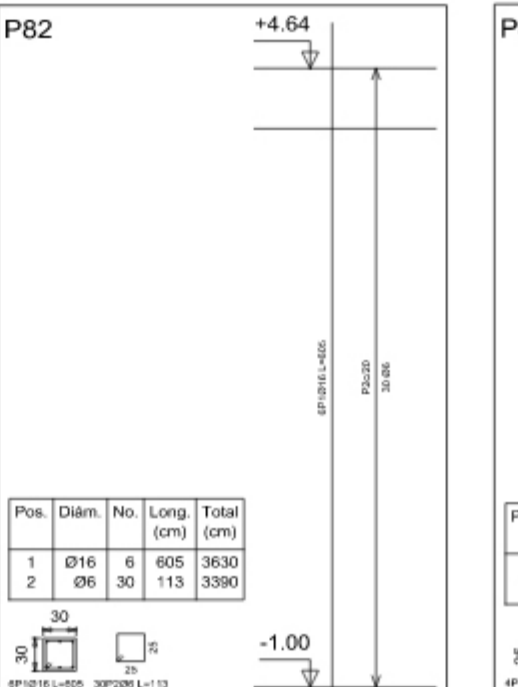
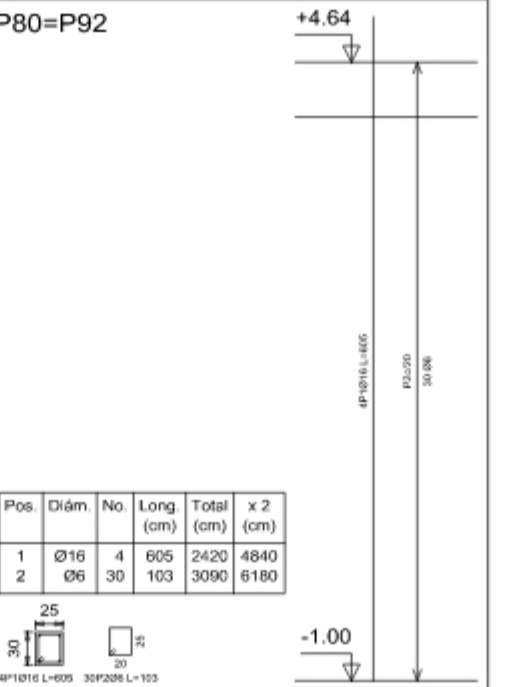
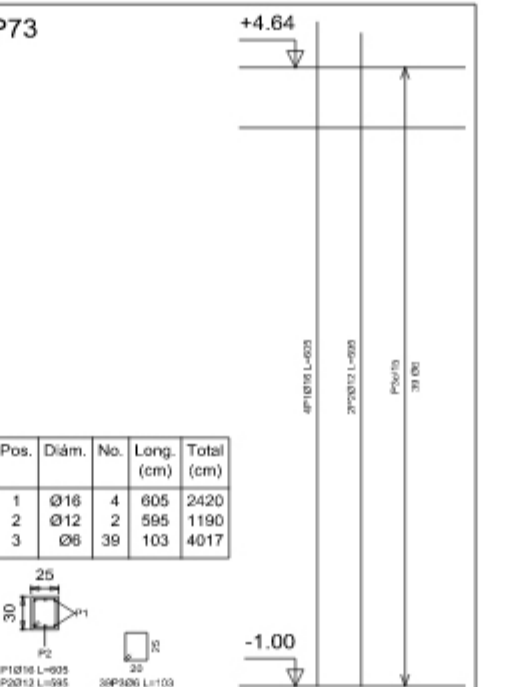
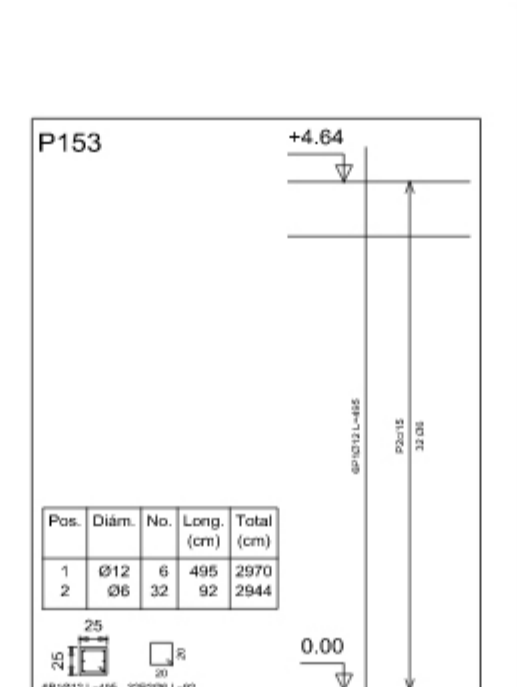
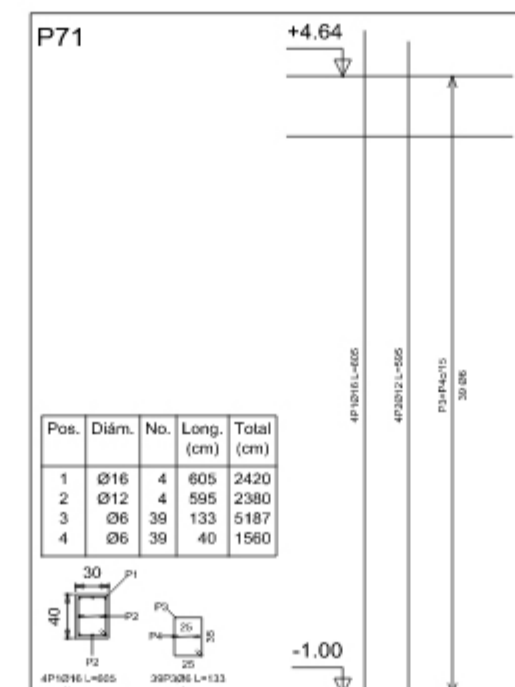
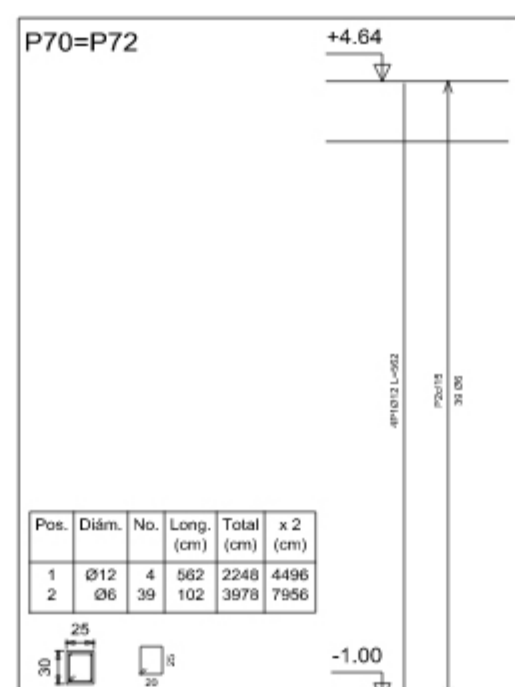
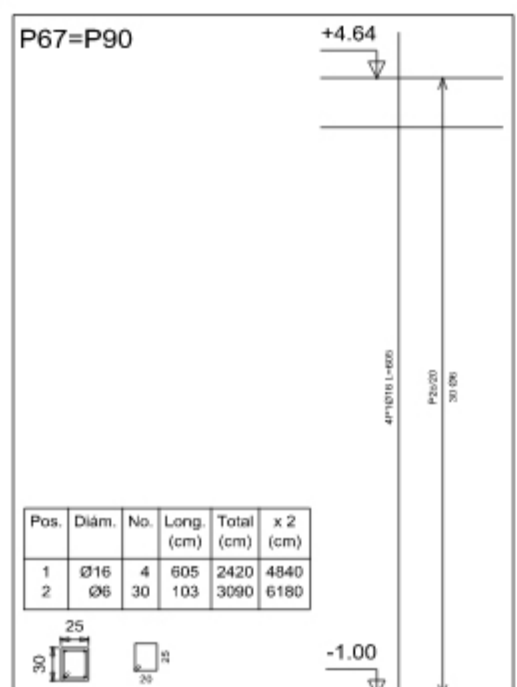
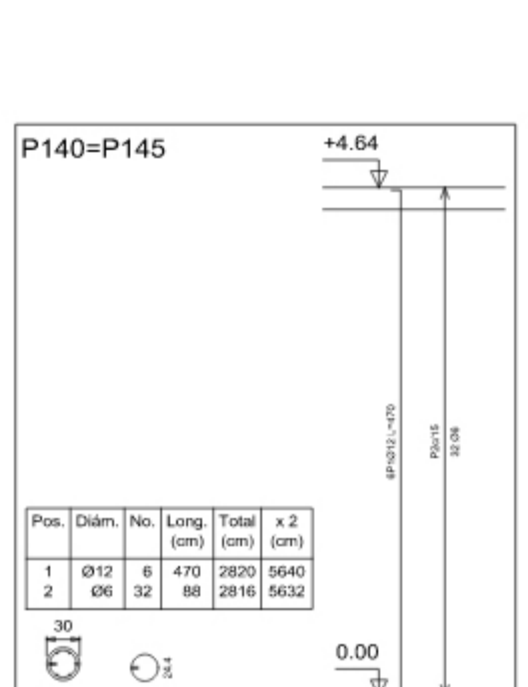
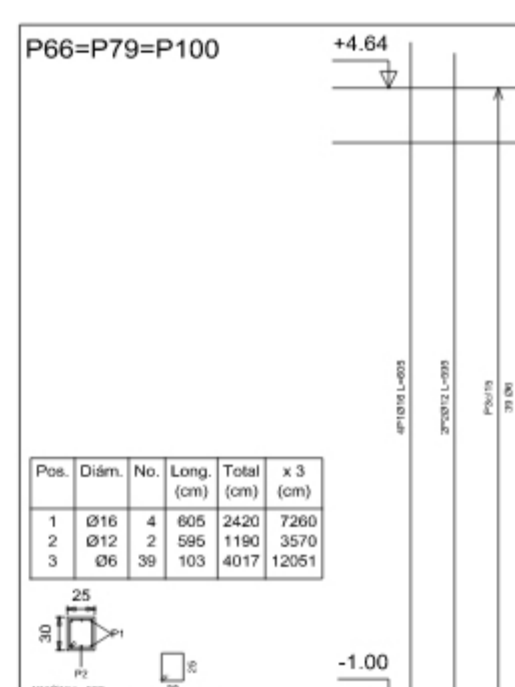
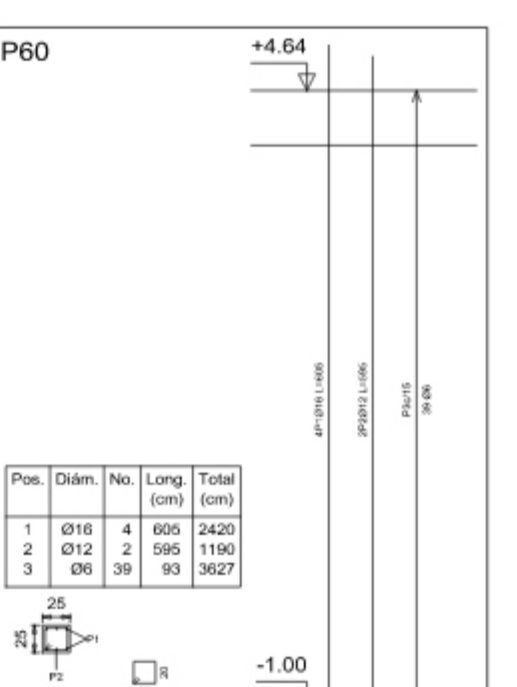
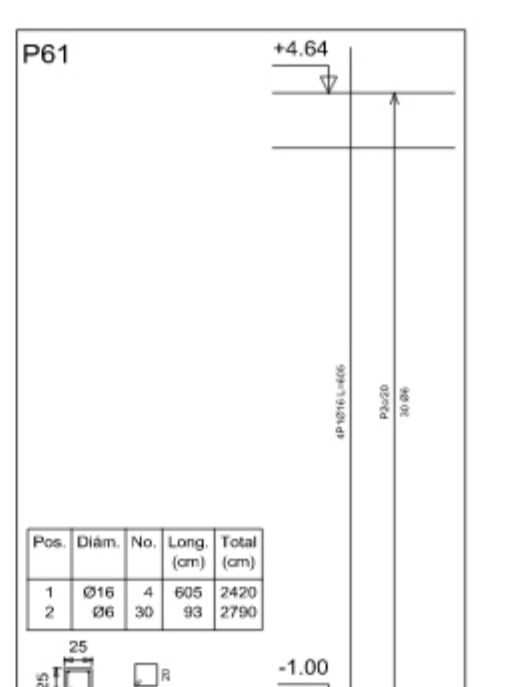
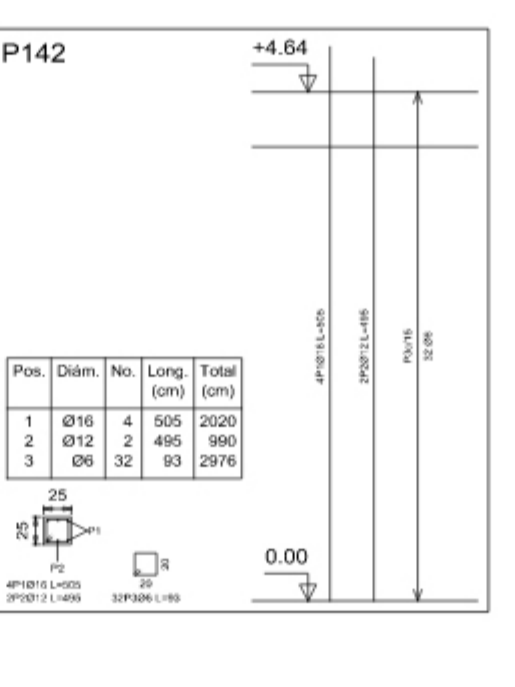
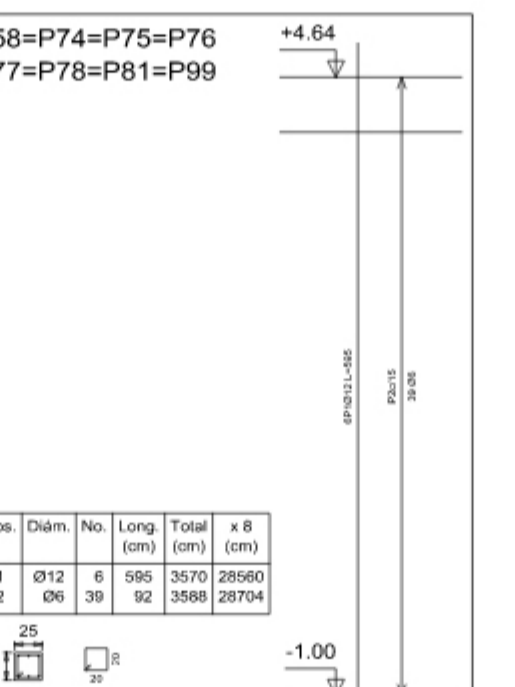
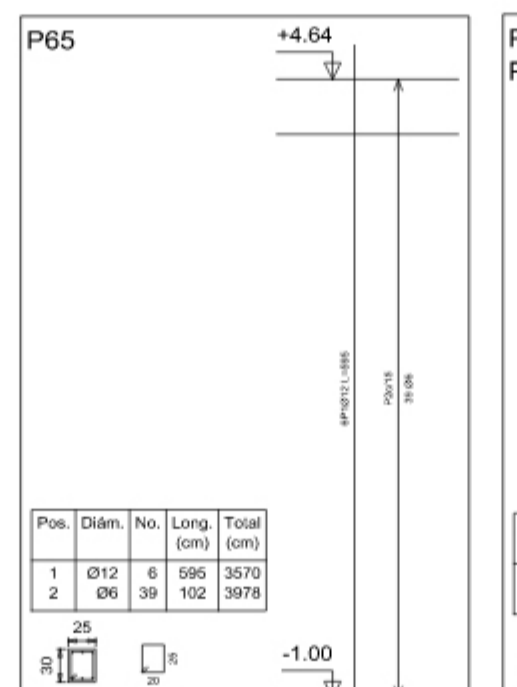
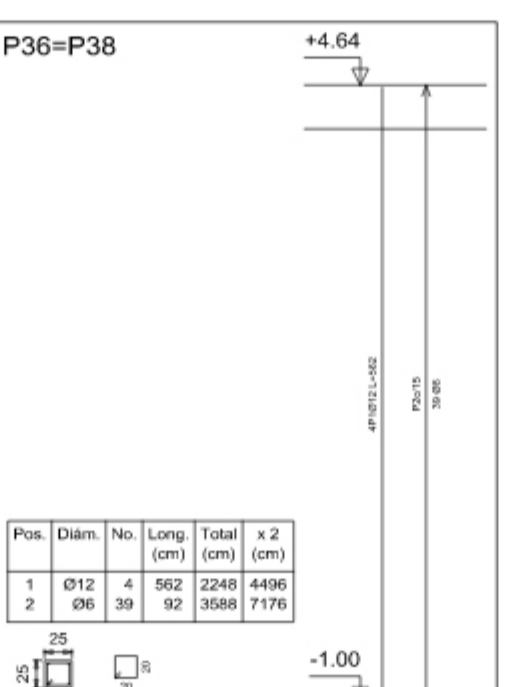
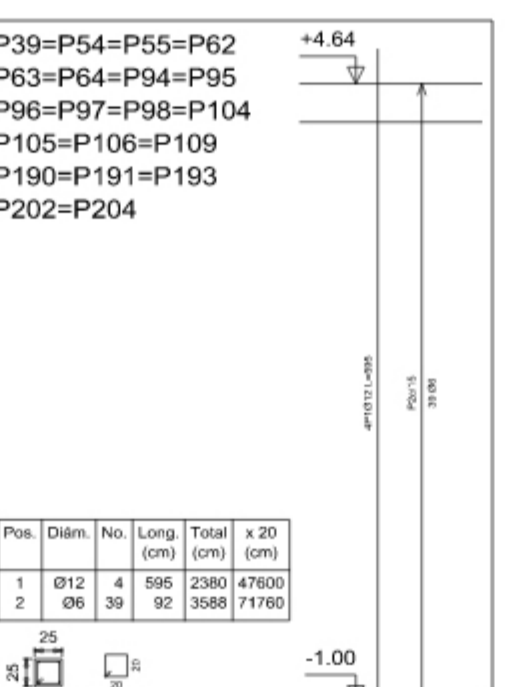
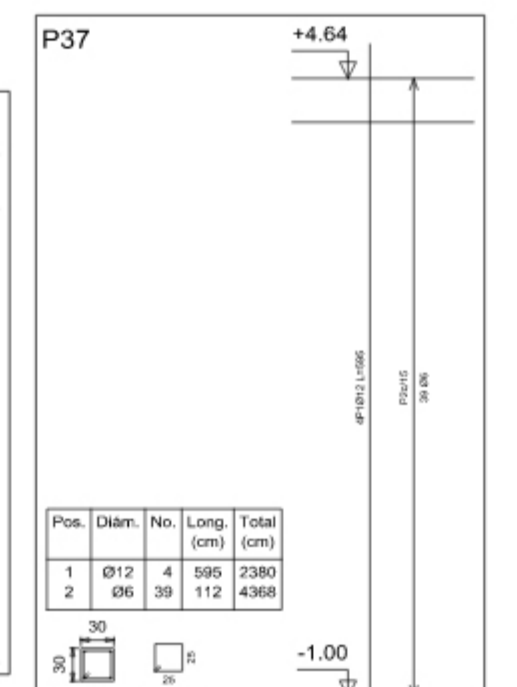
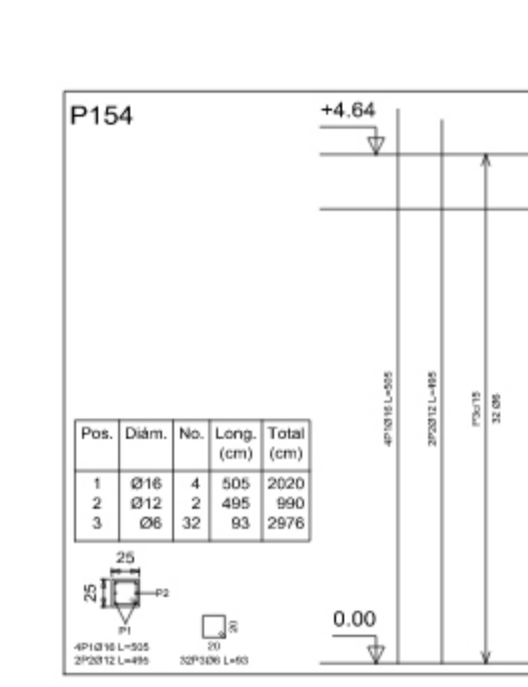
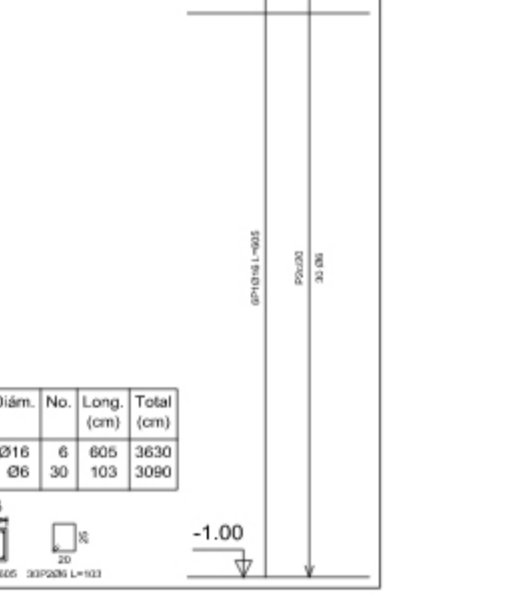
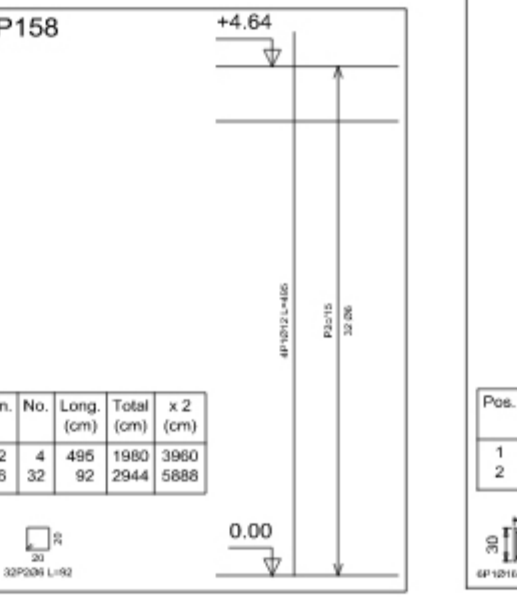
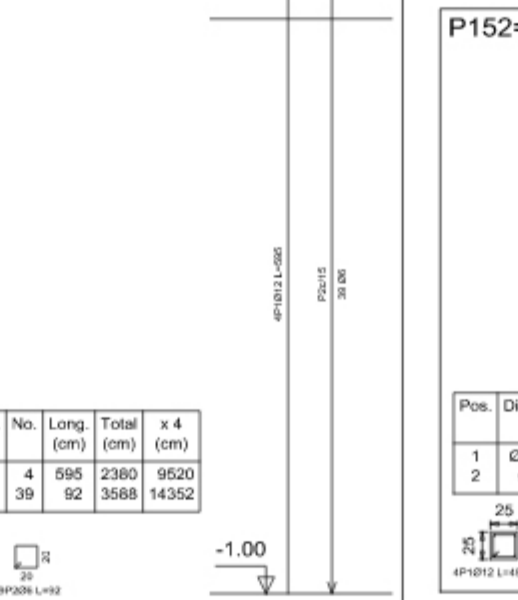
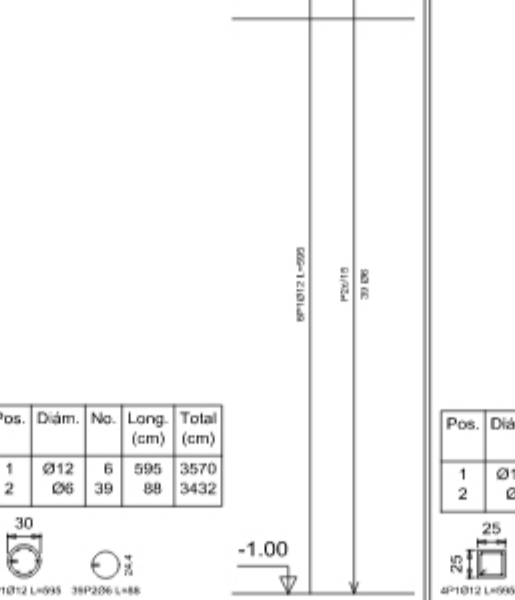
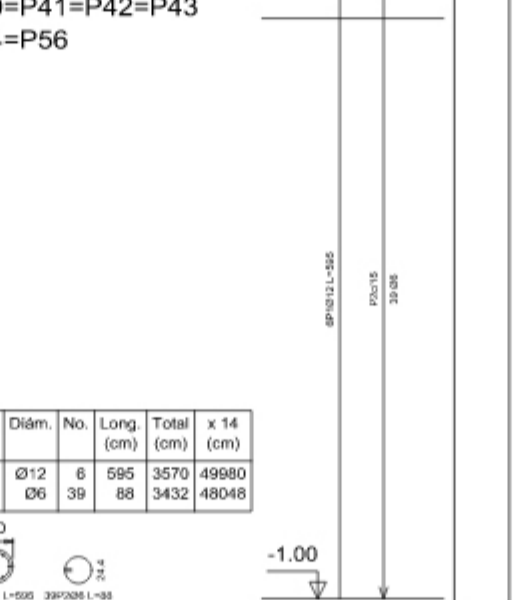
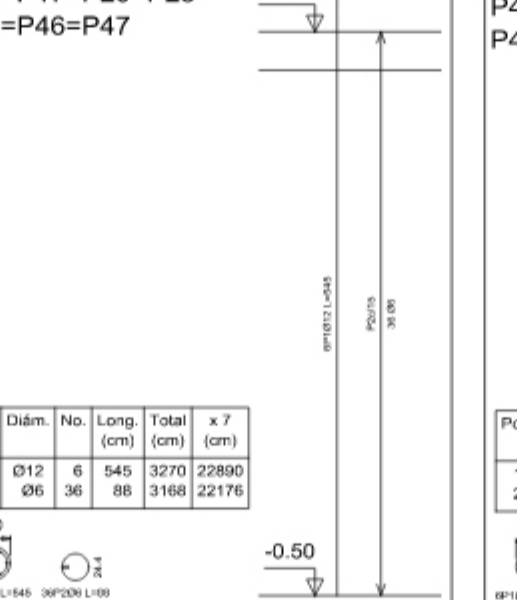
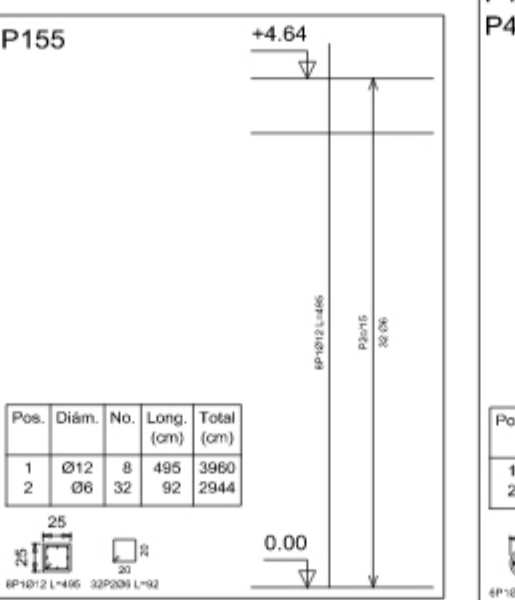
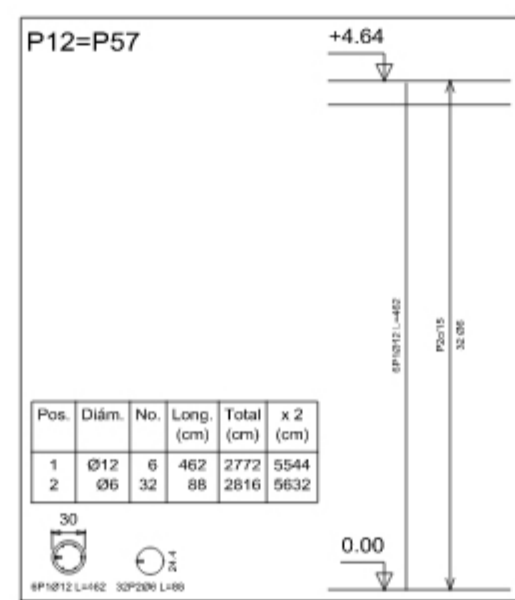
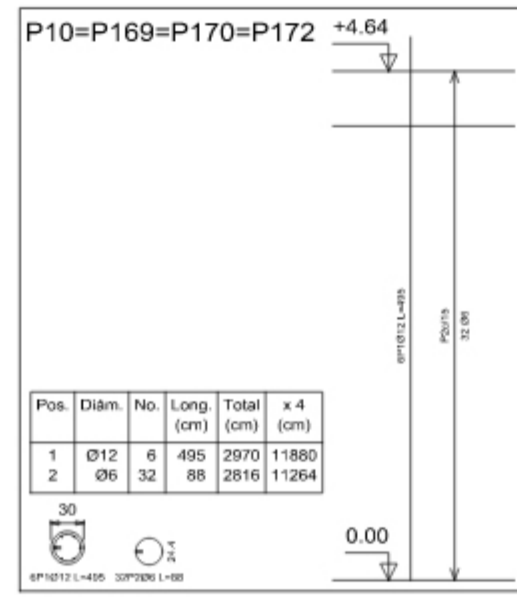
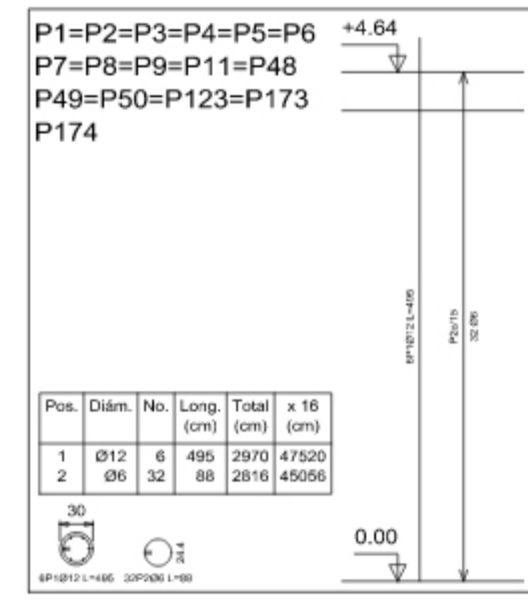
Pilares que terminan en cimentación 2  
 Hormigón: H-25 , Control Normal  
 Acero: AH-500 , Control Normal  
 Escala: 1:50

Resumen Acero cimentación 2			
Plazas	Long. total (m)	Peso+10% (kg)	Total
AH-500CN Ø6	5.7	1	
Ø12	3.6	3	
Ø16	11.3	20	24

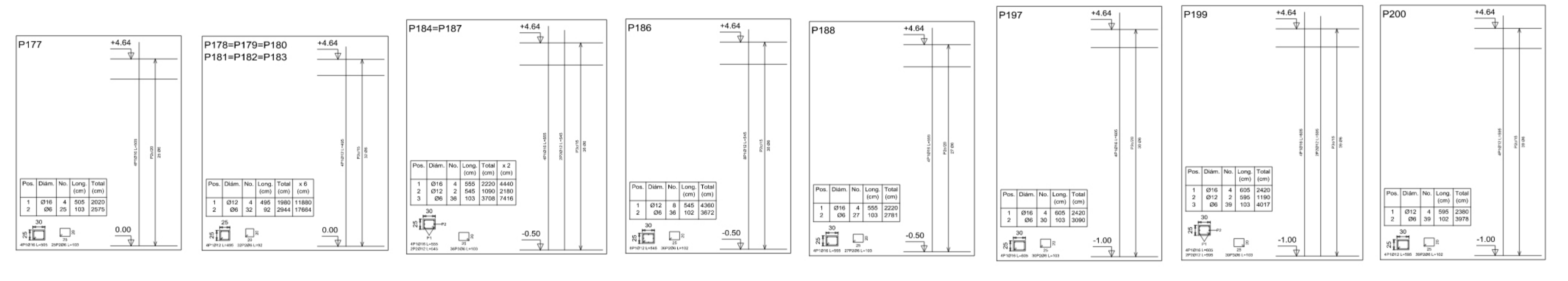


Pilares que terminan en  
Planta alta  
Hormigón: H-25 , Control Normal  
Acero: AH-500 , Control Normal  
Escala: 1:50

Resumen Acero	Long. total (m)	Peso=10% (kg)	Total
Planta alta	6015.7	1468	
Planta baja	4139.2	4542	
	839.3	1457	6967

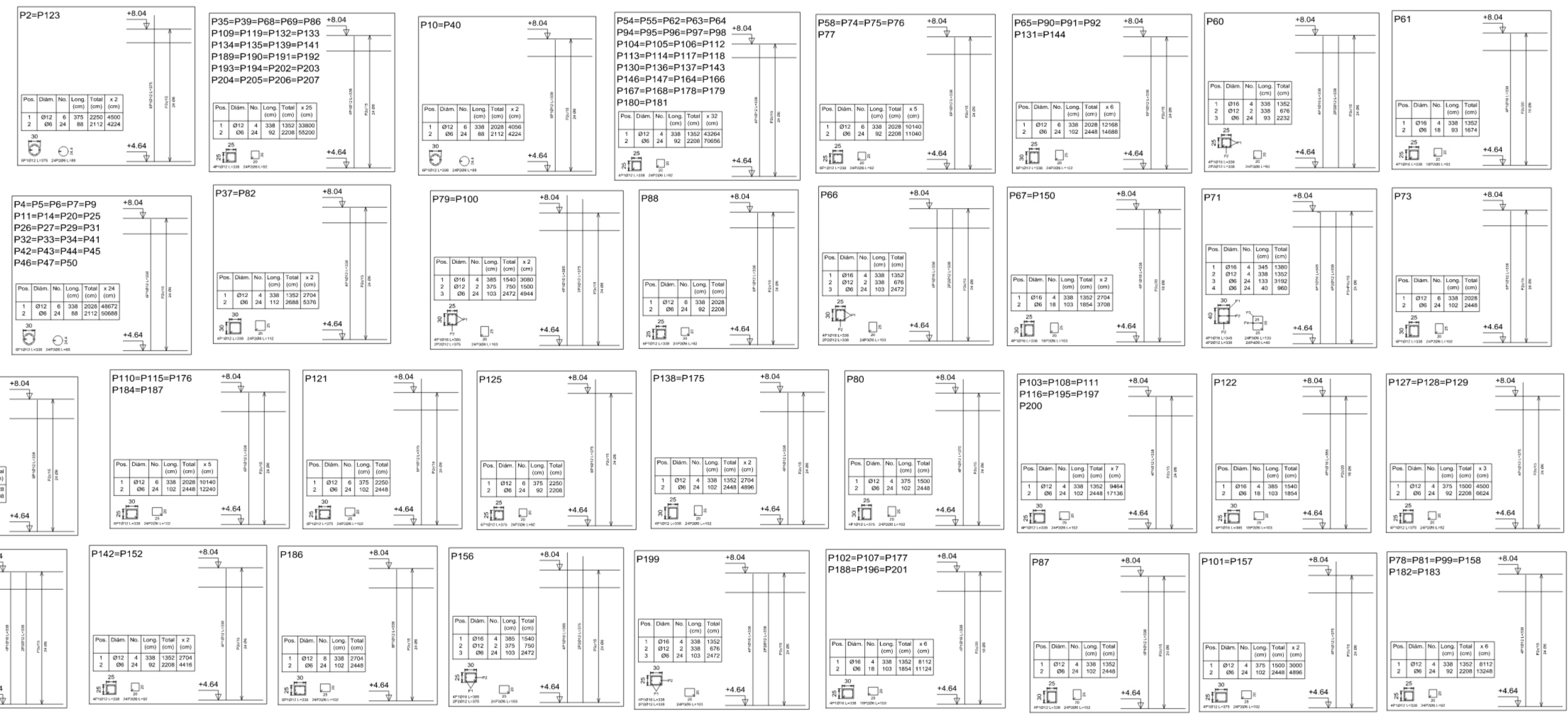


Pilares que terminan en  
Planta alta  
Hormigón: H-25 , Control Normal  
Acero: AH-500 , Control Normal  
Escala: 1:50



Pilares que terminan en  
azotea  
Hormigón: H-25 , Control Normal  
Acero: AH-500 , Control Normal  
Escala: 1:50

Resumen Acero azotea a desnivel Pilares	Long. total (m)	Peso+10% (kg)	Total
AH-500CN	06	3568.6	871
Ø12	2406.5	2350	
Ø16	250.6	435	3686



Pilares que terminan en  
azotea a desnivel  
Hormigón: H-25 , Control Normal  
Acero: AH-500 , Control Normal  
Escala: 1:50

Resumen Acero azotea a desnivel Pilares	Long. total (m)	Peso+10% (kg)	Total
AH-500CN	06	400.0	98
Ø12	317.6	310	408

