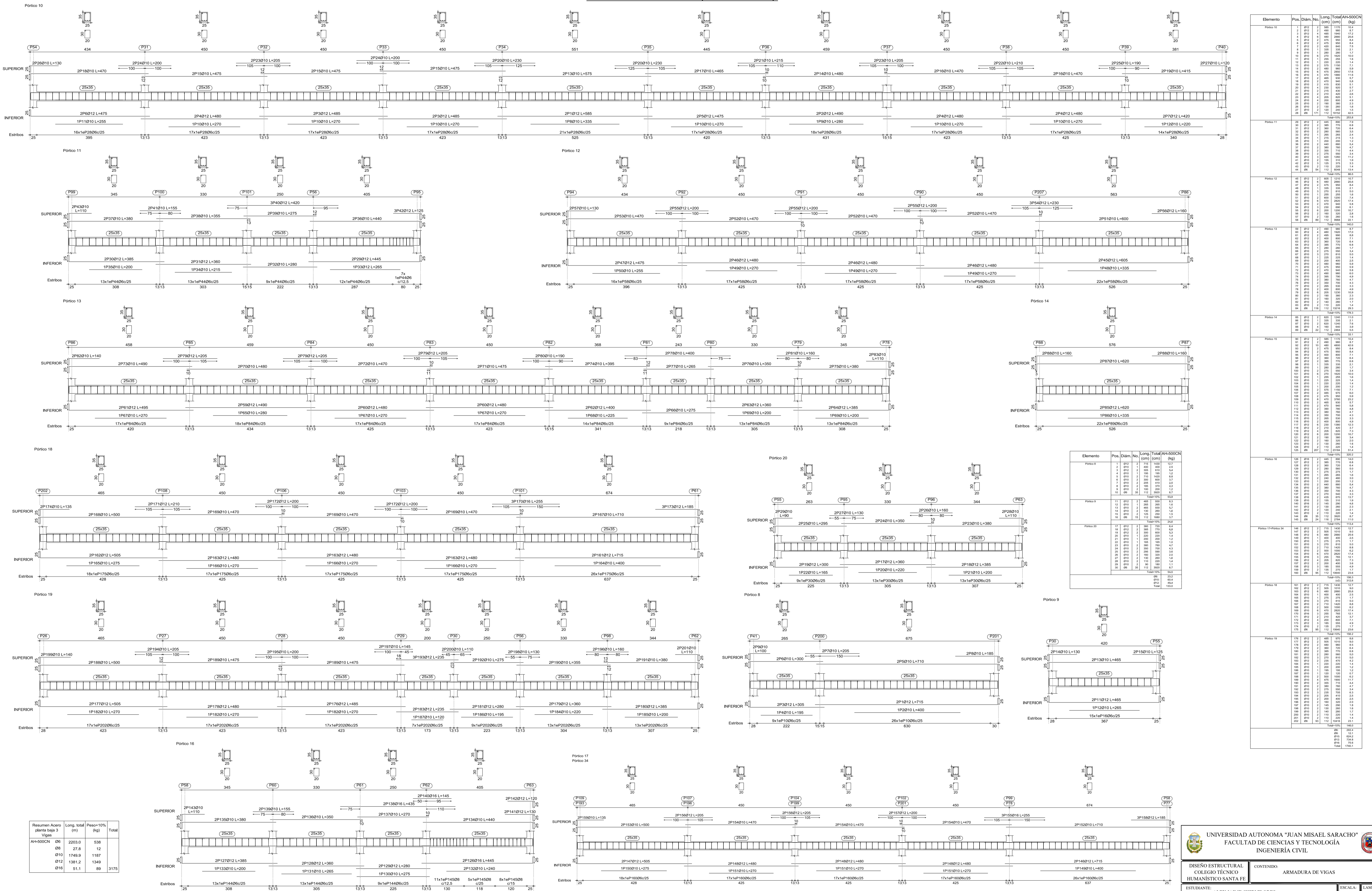


ARMADURA DE VIGAS-PLANTA BAJA-nivel (-1.00m)



Resumen Acero planta baja 3 Vigas	Long. Total (m)	Peso +10% (kg)	Total
AH-500CN Ø6	2203.0	538	12
Ø12	1749.9	1187	12
Ø16	1381.2	1349	12
Ø18	51.1	89	3175

Elemento	Pos.	Diam. (mm)	Long. (cm)	Total (AH-500CN) (kg)
Piso 10	1	Ø12	100	1.2
	2	Ø12	100	1.2
	3	Ø12	100	1.2
	4	Ø12	100	1.2
	5	Ø12	100	1.2
	6	Ø12	100	1.2
	7	Ø12	100	1.2
	8	Ø12	100	1.2
	9	Ø12	100	1.2
	10	Ø12	100	1.2
Total: 12.0				

Elemento	Pos.	Diam. (mm)	Long. (cm)	Total (AH-500CN) (kg)
Piso 10	1	Ø12	100	1.2
	2	Ø12	100	1.2
	3	Ø12	100	1.2
	4	Ø12	100	1.2
	5	Ø12	100	1.2
	6	Ø12	100	1.2
	7	Ø12	100	1.2
	8	Ø12	100	1.2
	9	Ø12	100	1.2
	10	Ø12	100	1.2
Total: 12.0				
Piso 11	1	Ø12	100	1.2
	2	Ø12	100	1.2
	3	Ø12	100	1.2
	4	Ø12	100	1.2
	5	Ø12	100	1.2
	6	Ø12	100	1.2
	7	Ø12	100	1.2
	8	Ø12	100	1.2
	9	Ø12	100	1.2
	10	Ø12	100	1.2
Total: 12.0				
Piso 12	1	Ø12	100	1.2
	2	Ø12	100	1.2
	3	Ø12	100	1.2
	4	Ø12	100	1.2
	5	Ø12	100	1.2
	6	Ø12	100	1.2
	7	Ø12	100	1.2
	8	Ø12	100	1.2
	9	Ø12	100	1.2
	10	Ø12	100	1.2
Total: 12.0				
Piso 13	1	Ø12	100	1.2
	2	Ø12	100	1.2
	3	Ø12	100	1.2
	4	Ø12	100	1.2
	5	Ø12	100	1.2
	6	Ø12	100	1.2
	7	Ø12	100	1.2
	8	Ø12	100	1.2
	9	Ø12	100	1.2
	10	Ø12	100	1.2
Total: 12.0				
Piso 14	1	Ø12	100	1.2
	2	Ø12	100	1.2
	3	Ø12	100	1.2
	4	Ø12	100	1.2
	5	Ø12	100	1.2
	6	Ø12	100	1.2
	7	Ø12	100	1.2
	8	Ø12	100	1.2
	9	Ø12	100	1.2
	10	Ø12	100	1.2
Total: 12.0				
Piso 15	1	Ø12	100	1.2
	2	Ø12	100	1.2
	3	Ø12	100	1.2
	4	Ø12	100	1.2
	5	Ø12	100	1.2
	6	Ø12	100	1.2
	7	Ø12	100	1.2
	8	Ø12	100	1.2
	9	Ø12	100	1.2
	10	Ø12	100	1.2
Total: 12.0				
Piso 16	1	Ø12	100	1.2
	2	Ø12	100	1.2
	3	Ø12	100	1.2
	4	Ø12	100	1.2
	5	Ø12	100	1.2
	6	Ø12	100	1.2
	7	Ø12	100	1.2
	8	Ø12	100	1.2
	9	Ø12	100	1.2
	10	Ø12	100	1.2
Total: 12.0				
Piso 17	1	Ø12	100	1.2
	2	Ø12	100	1.2
	3	Ø12	100	1.2
	4	Ø12	100	1.2
	5	Ø12	100	1.2
	6	Ø12	100	1.2
	7	Ø12	100	1.2
	8	Ø12	100	1.2
	9	Ø12	100	1.2
	10	Ø12	100	1.2
Total: 12.0				
Piso 18	1	Ø12	100	1.2
	2	Ø12	100	1.2
	3	Ø12	100	1.2
	4	Ø12	100	1.2
	5	Ø12	100	1.2
	6	Ø12	100	1.2
	7	Ø12	100	1.2
	8	Ø12	100	1.2
	9	Ø12	100	1.2
	10	Ø12	100	1.2
Total: 12.0				
Piso 19	1	Ø12	100	1.2
	2	Ø12	100	1.2
	3	Ø12	100	1.2
	4	Ø12	100	1.2
	5	Ø12	100	1.2
	6	Ø12	100	1.2
	7	Ø12	100	1.2
	8	Ø12	100	1.2
	9	Ø12	100	1.2
	10	Ø12	100	1.2
Total: 12.0				
Piso 20	1	Ø12	100	1.2
	2	Ø12	100	1.2
	3	Ø12	100	1.2
	4	Ø12	100	1.2
	5	Ø12	100	1.2
	6	Ø12	100	1.2
	7	Ø12	100	1.2
	8	Ø12	100	1.2
	9	Ø12	100	1.2
	10	Ø12	100	1.2
Total: 12.0				
Piso 21	1	Ø12	100	1.2
	2	Ø12	100	1.2
	3	Ø12	100	1.2
	4	Ø12	100	1.2
	5	Ø12	100	1.2
	6	Ø12	100	1.2
	7	Ø12	100	1.2
	8	Ø12	100	1.2
	9	Ø12	100	1.2
	10	Ø12	100	1.2
Total: 12.0				
Piso 22	1	Ø12	100	1.2
	2	Ø12	100	1.2
	3	Ø12	100	1.2
	4	Ø12	100	1.2
	5	Ø12	100	1.2
	6	Ø12	100	1.2
	7	Ø12	100	1.2
	8	Ø12	100	1.2
	9	Ø12	100	1.2
	10	Ø12	100	1.2
Total: 12.0				
Piso 23	1	Ø12	100	1.2
	2	Ø12	100	1.2
	3	Ø12	100	1.2
	4	Ø12	100	1.2
	5	Ø12	100	1.2
	6	Ø12	100	1.2
	7	Ø12	100	1.2
	8	Ø12	100	1.2
	9	Ø12	100	1.2
	10	Ø12	100	1.2
Total: 12.0				
Piso 24	1	Ø12	100	1.2
	2	Ø12	100	1.2
	3	Ø12	100	1.2
	4	Ø12	100	1.2
	5	Ø12	100	1.2
	6	Ø12	100	1.2
	7	Ø12	100	1.2
	8	Ø12	100	1.2
	9	Ø12	100	1.2
	10	Ø12	100	1.2
Total: 12.0				
Piso 25	1	Ø12	100	1.2
	2	Ø12	100	1.2
	3	Ø12	100	1.2
	4	Ø12	100	1.2
	5	Ø12	100	1.2
	6	Ø12	100	1.2
	7	Ø12	100	1.2
	8	Ø12	100	1.2
	9	Ø12	100	1.2
	10	Ø12	100	1.2
Total: 12.0				

UNIVERSIDAD AUTÓNOMA "JUAN MISAEL SARACHO"
FACULTAD DE CIENCIAS Y TECNOLOGÍA
INGENIERÍA CIVIL

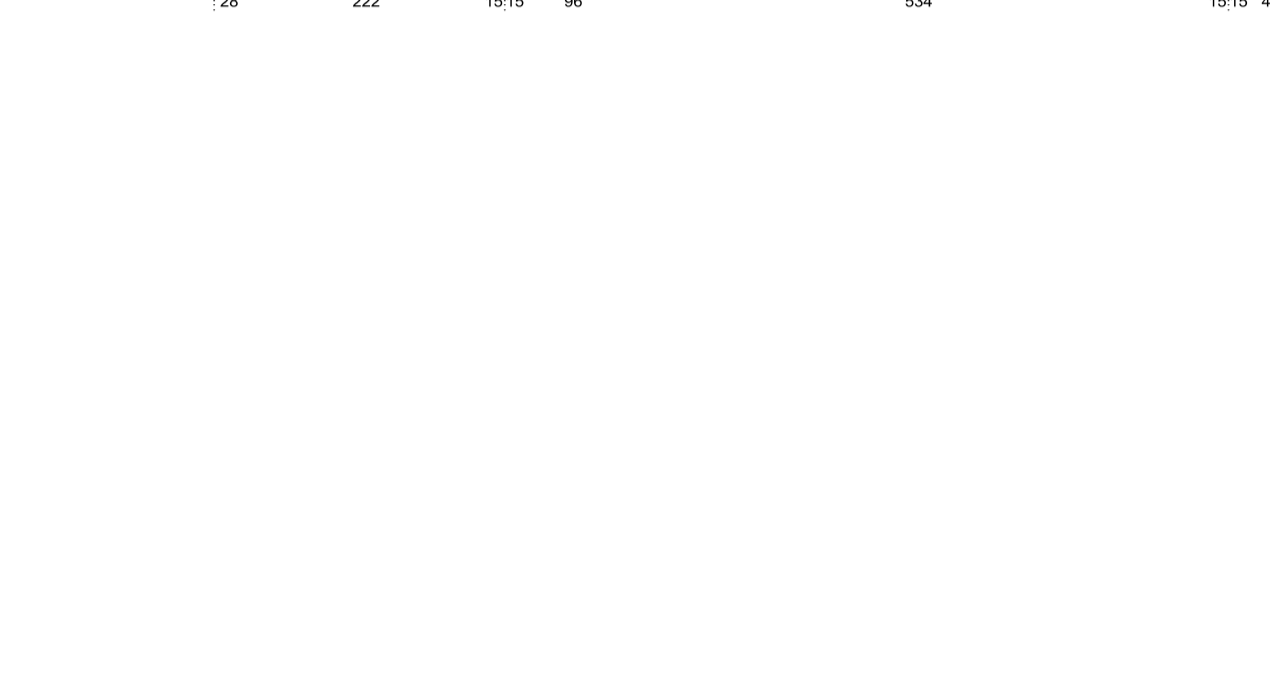
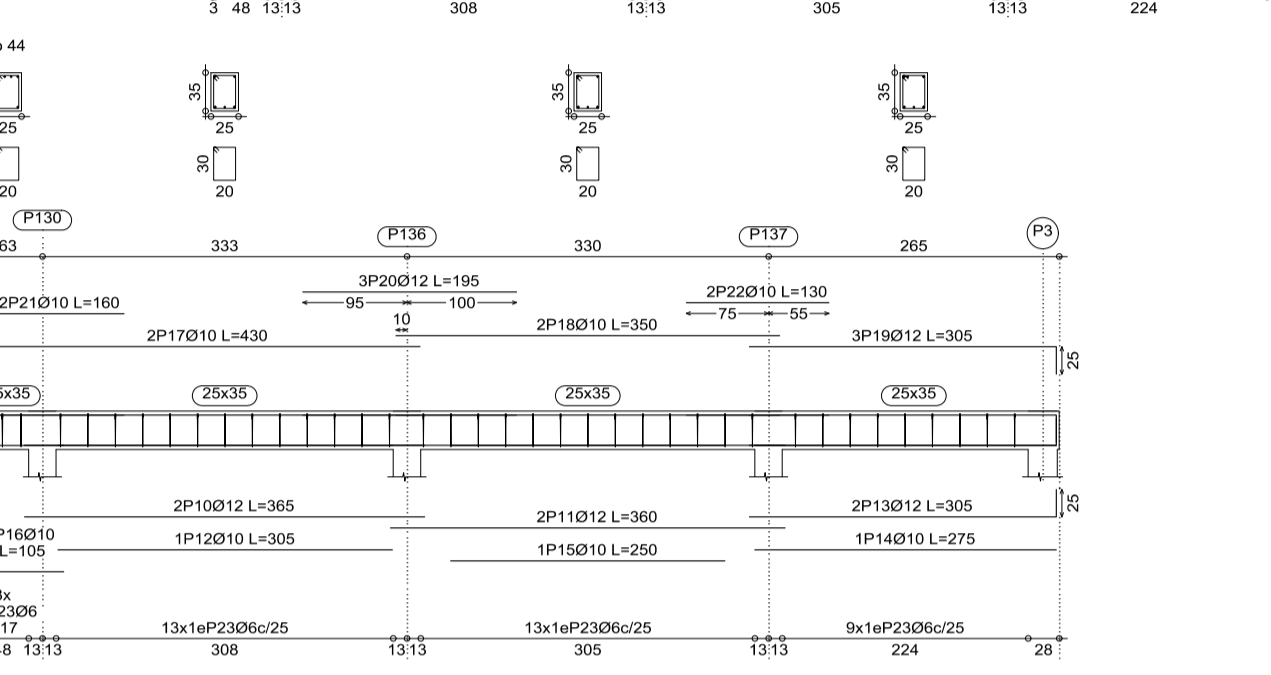
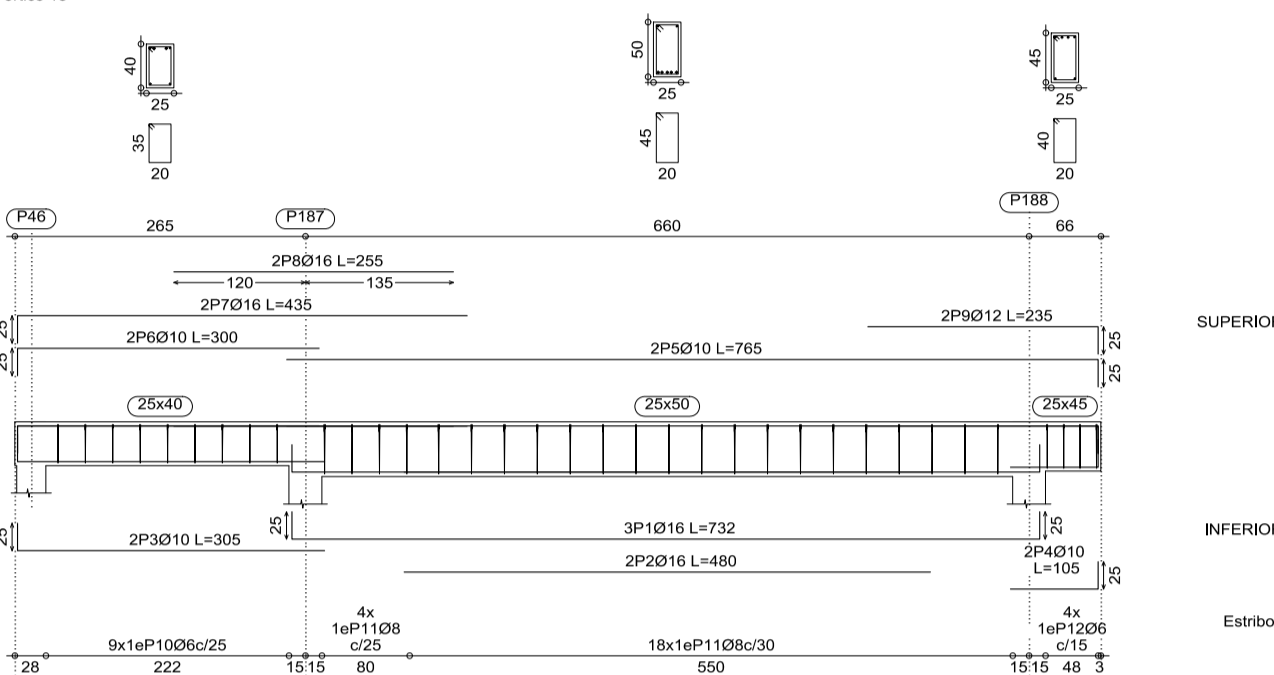
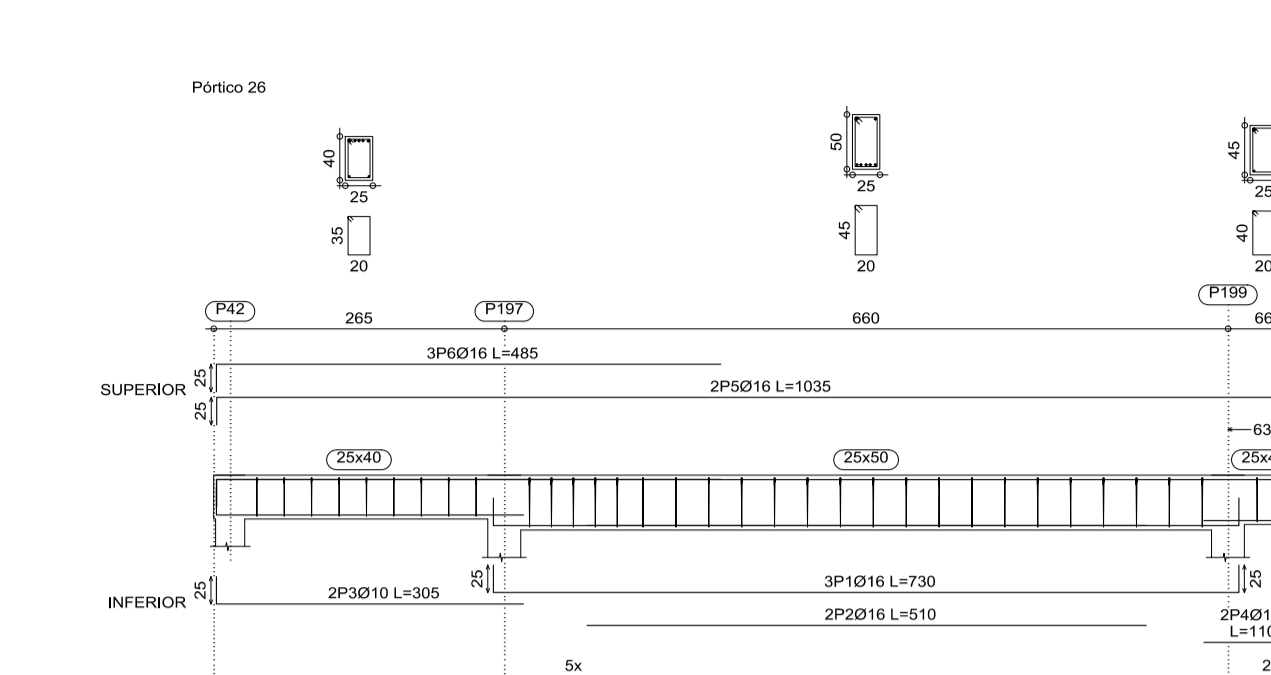
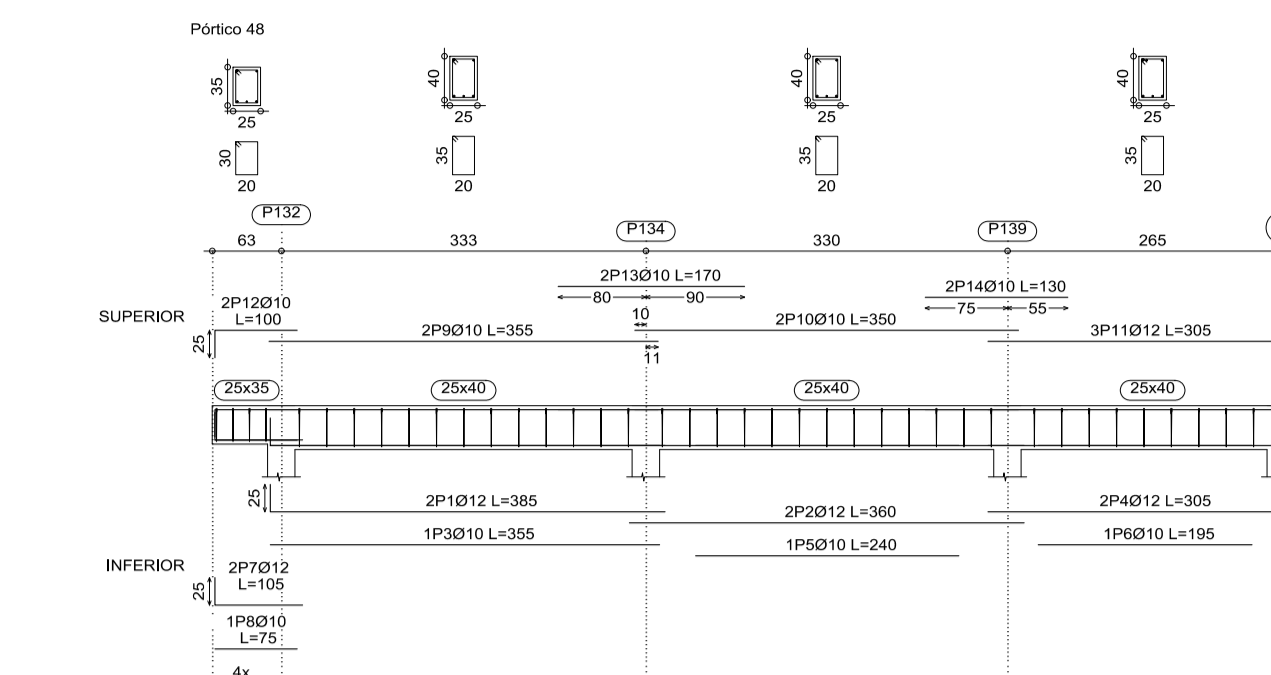
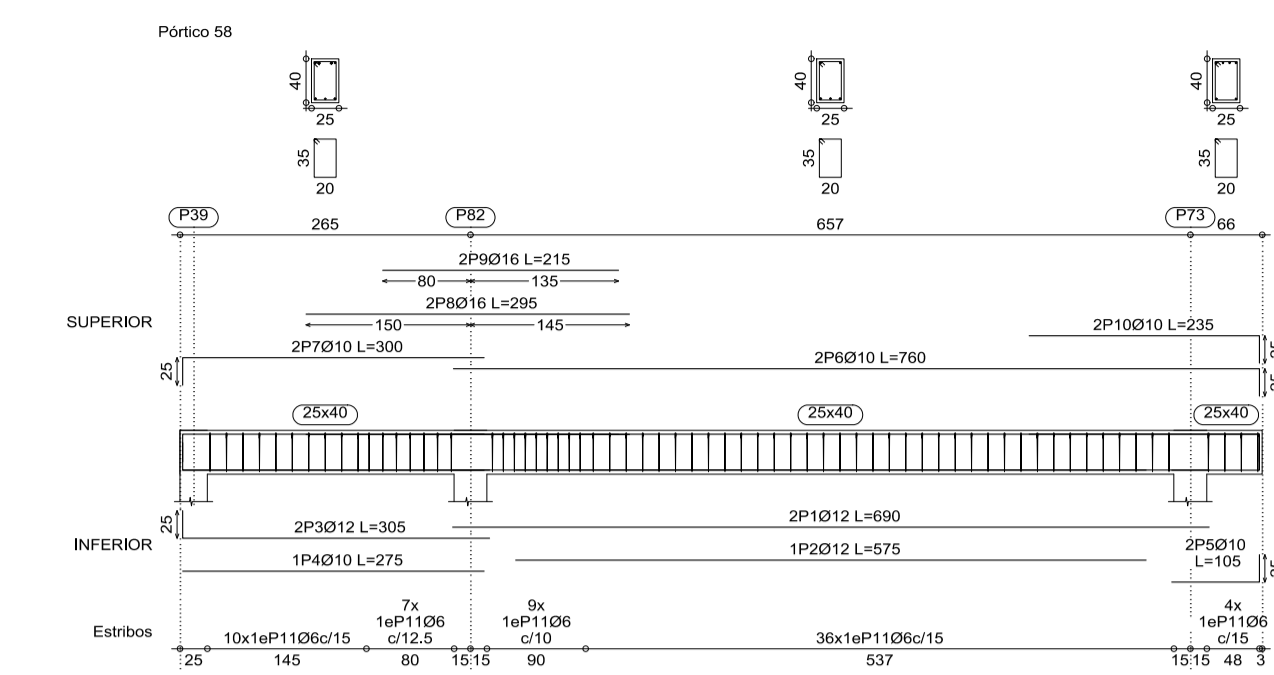
DISEÑO ESTRUCTURAL HUMANÍSTICO COLEGIO TÉCNICO HUMANÍSTICO SANTA FE	CONTENIDO: ARMADURA DE VIGAS
ESTUDIANTE: ALEX JAIME CHIRI FLORES	ESCALA: 1:50 LÁMINA: 9
Fecha: ENERO 2022	No. de Hoja: 30

ARMADURA DE VIGAS-CUBIERTA

Elemento	Pos.	Diam.	No.	Long. (cm)	Total AH-500CN (cm)	Total AH-500CN (kg)
Pórtico 20	1	Ø12	2	100	200	3.14
	2	Ø12	2	100	200	3.14
	3	Ø12	2	100	200	3.14
	4	Ø12	2	100	200	3.14
	5	Ø12	2	100	200	3.14
	6	Ø12	2	100	200	3.14
	7	Ø12	2	100	200	3.14
	8	Ø12	2	100	200	3.14
	9	Ø12	2	100	200	3.14
	10	Ø12	2	100	200	3.14
Total: 31.42						31.42

Elemento	Pos.	Diam.	No.	Long. (cm)	Total AH-500CN (cm)	Total AH-500CN (kg)
Pórtico 14	1	Ø12	2	100	200	3.14
	2	Ø12	2	100	200	3.14
	3	Ø12	2	100	200	3.14
	4	Ø12	2	100	200	3.14
	5	Ø12	2	100	200	3.14
	6	Ø12	2	100	200	3.14
	7	Ø12	2	100	200	3.14
	8	Ø12	2	100	200	3.14
	9	Ø12	2	100	200	3.14
	10	Ø12	2	100	200	3.14
Total: 31.42						31.42

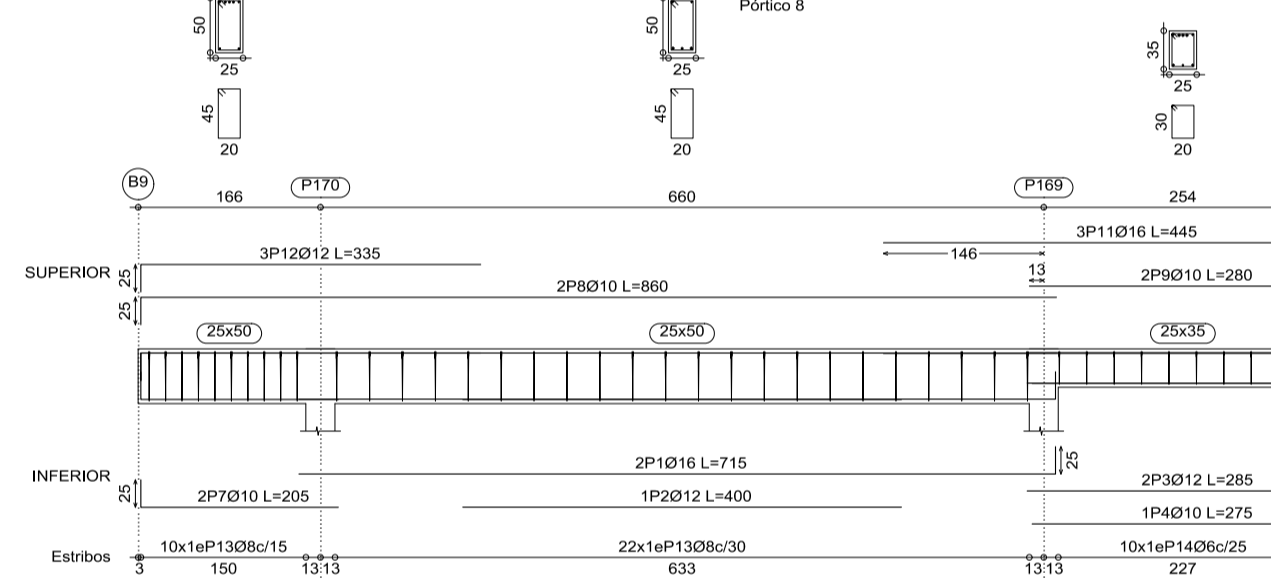
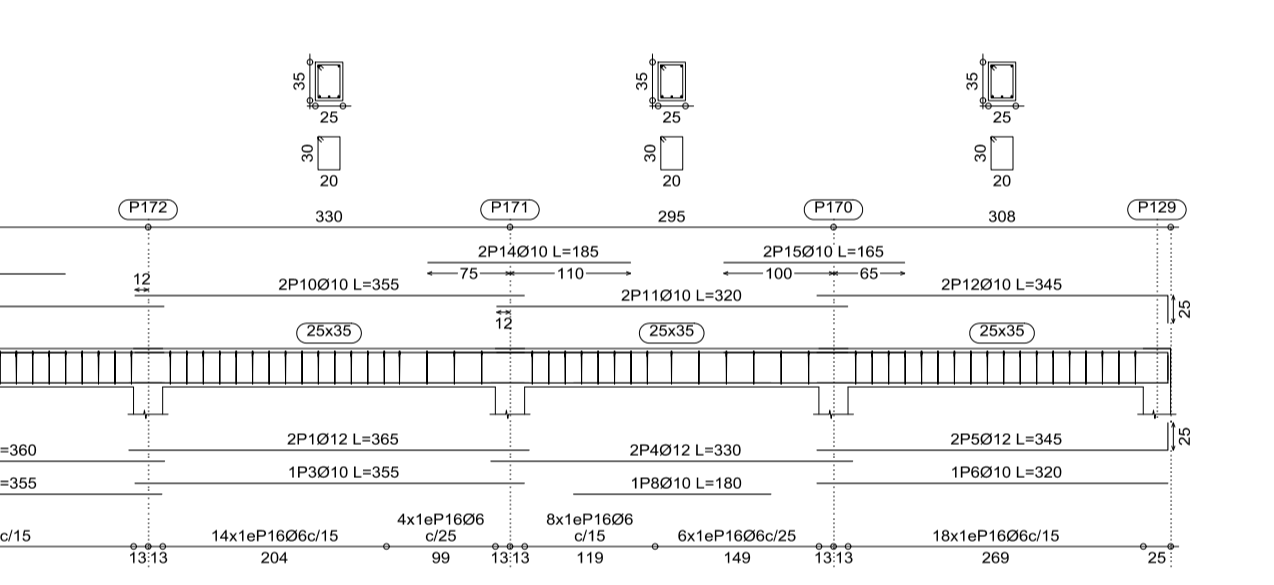
Elemento	Pos.	Diam.	No.	Long. (cm)	Total AH-500CN (cm)	Total AH-500CN (kg)
Pórtico 18	1	Ø12	2	100	200	3.14
	2	Ø12	2	100	200	3.14
	3	Ø12	2	100	200	3.14
	4	Ø12	2	100	200	3.14
	5	Ø12	2	100	200	3.14
	6	Ø12	2	100	200	3.14
	7	Ø12	2	100	200	3.14
	8	Ø12	2	100	200	3.14
	9	Ø12	2	100	200	3.14
	10	Ø12	2	100	200	3.14
Total: 31.42						31.42



ARMADURA DE VIGAS-CUBIERTA A DESNIVEL

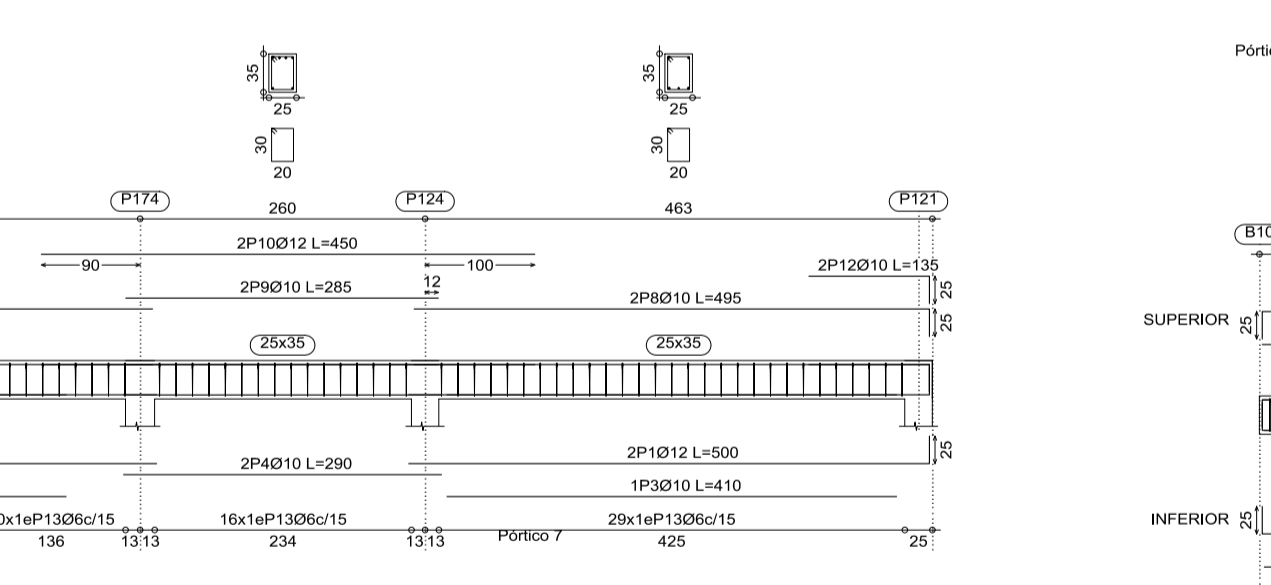
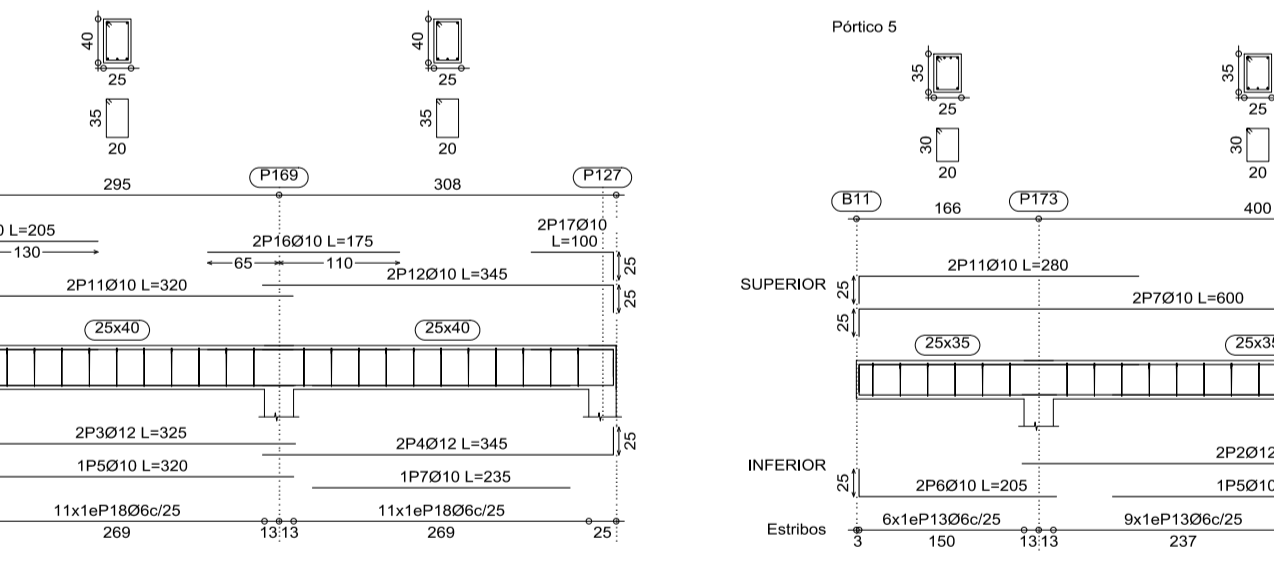
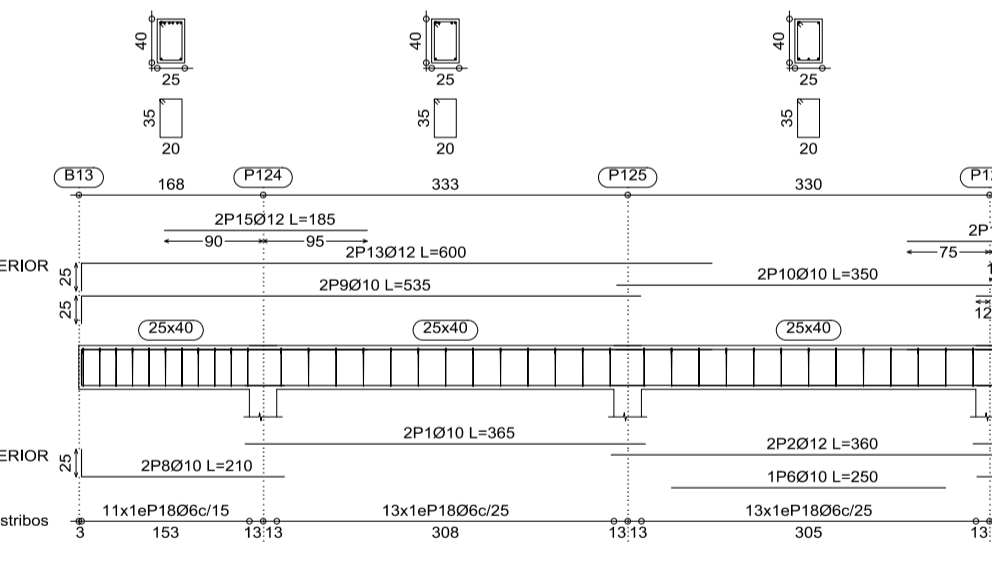
accesos a desnivel
Despiece de vigas
Homolog: H425 - Control Normal
Acero: AH-500 - Control Normal
Escala: 1:50

Resumen Acero	Long. total (m)	Peso+10% (kg)	Total (kg)
AH-500CN Ø6	356.7	88	88
Ø6	178.6	78	78
Ø10	367.2	249	249
Ø12	218.8	214	214
Ø16	90.7	157	157
Total			786



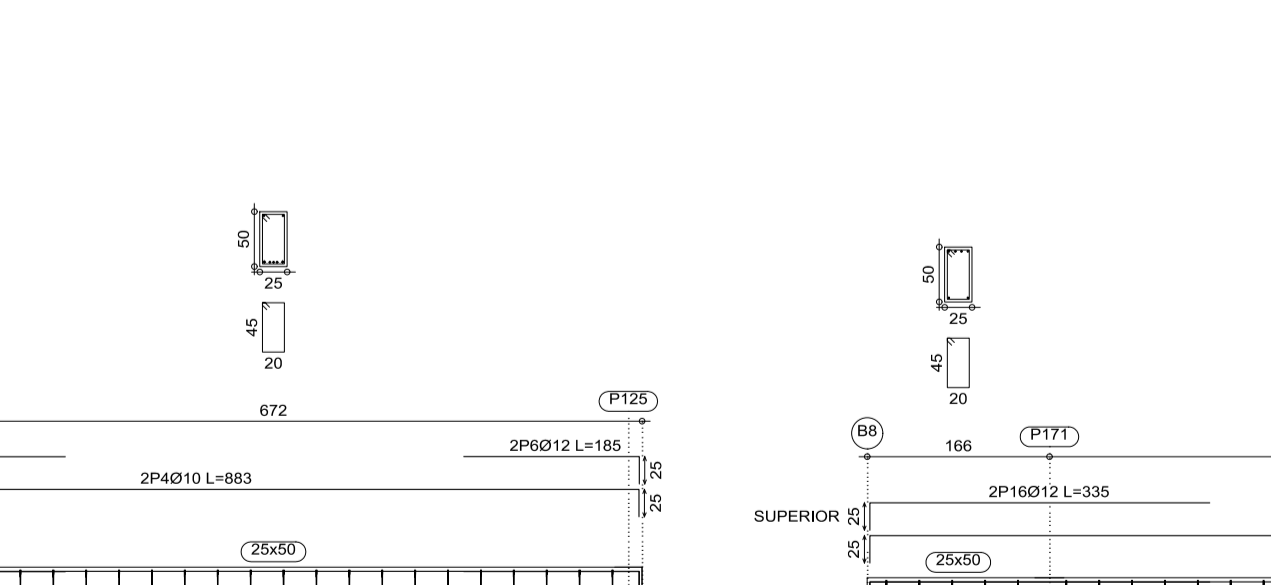
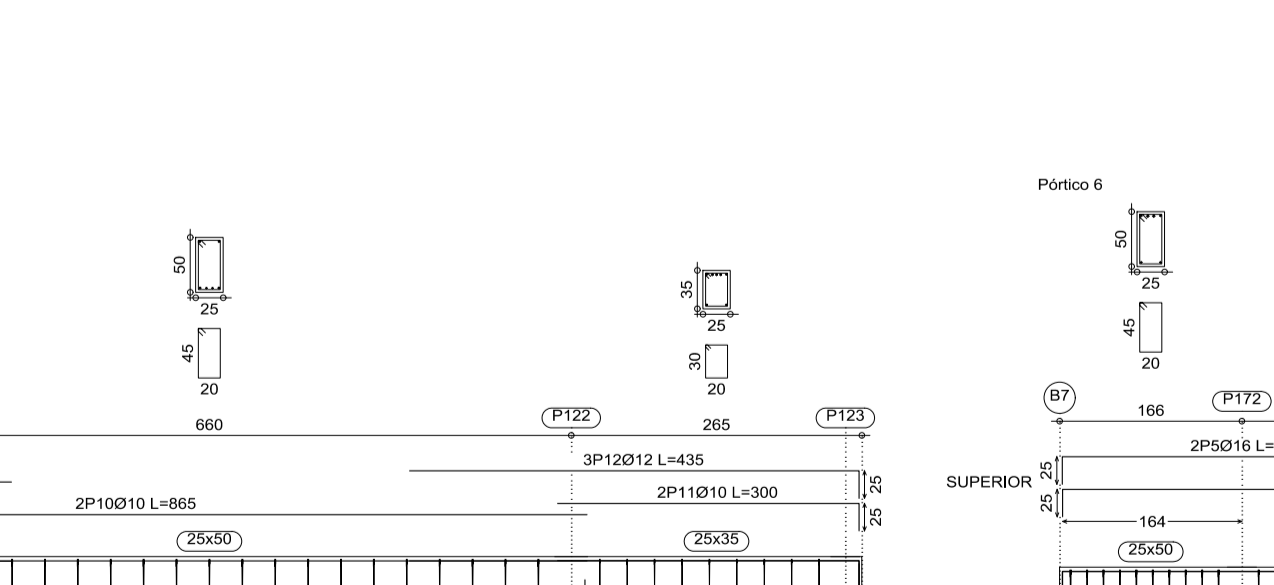
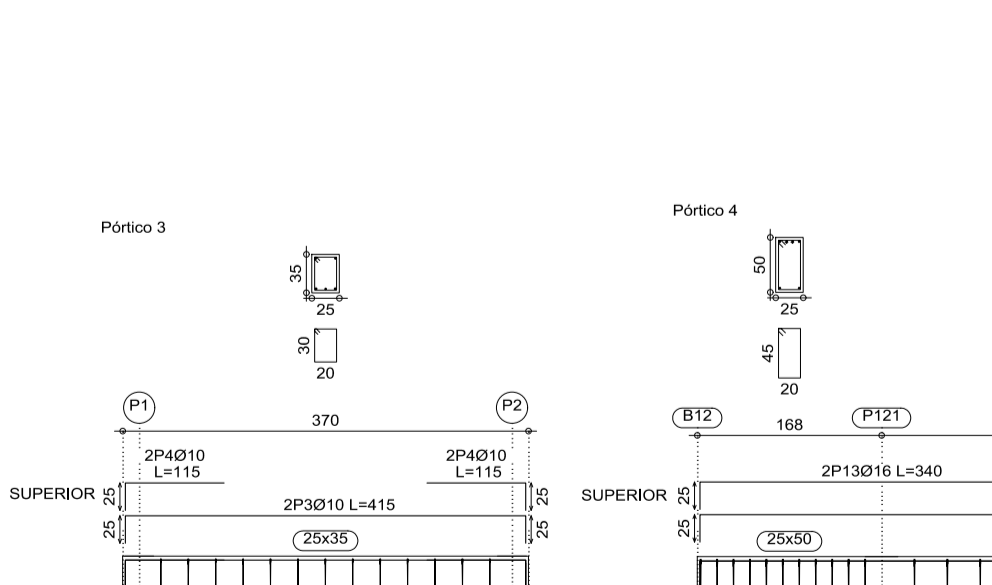
Elemento	Pos.	Diam.	No.	Long. (cm)	Total AH-500CN (cm)	Total AH-500CN (kg)
Pórtico 2	1	Ø12	2	100	200	3.14
	2	Ø12	2	100	200	3.14
	3	Ø12	2	100	200	3.14
	4	Ø12	2	100	200	3.14
	5	Ø12	2	100	200	3.14
	6	Ø12	2	100	200	3.14
	7	Ø12	2	100	200	3.14
	8	Ø12	2	100	200	3.14
	9	Ø12	2	100	200	3.14
	10	Ø12	2	100	200	3.14
Total: 31.42						31.42

Elemento	Pos.	Diam.	No.	Long. (cm)	Total AH-500CN (cm)	Total AH-500CN (kg)
Pórtico 3	1	Ø12	2	100	200	3.14
	2	Ø12	2	100	200	3.14
	3	Ø12	2	100	200	3.14
	4	Ø12	2	100	200	3.14
	5	Ø12	2	100	200	3.14
	6	Ø12	2	100	200	3.14
	7	Ø12	2	100	200	3.14
	8	Ø12	2	100	200	3.14
	9	Ø12	2	100	200	3.14
	10	Ø12	2	100	200	3.14
Total: 31.42						31.42



Elemento	Pos.	Diam.	No.	Long. (cm)	Total AH-500CN (cm)	Total AH-500CN (kg)
Pórtico 1	1	Ø12	2	100	200	3.14
	2	Ø12	2	100	200	3.14
	3	Ø12	2	100	200	3.14
	4	Ø12	2	100	200	3.14
	5	Ø12	2	100	200	3.14
	6	Ø12	2	100	200	3.14
	7	Ø12	2	100	200	3.14
	8	Ø12	2	100	200	3.14
	9	Ø12	2	100	200	3.14
	10	Ø12	2	100	200	3.14
Total: 31.42						31.42

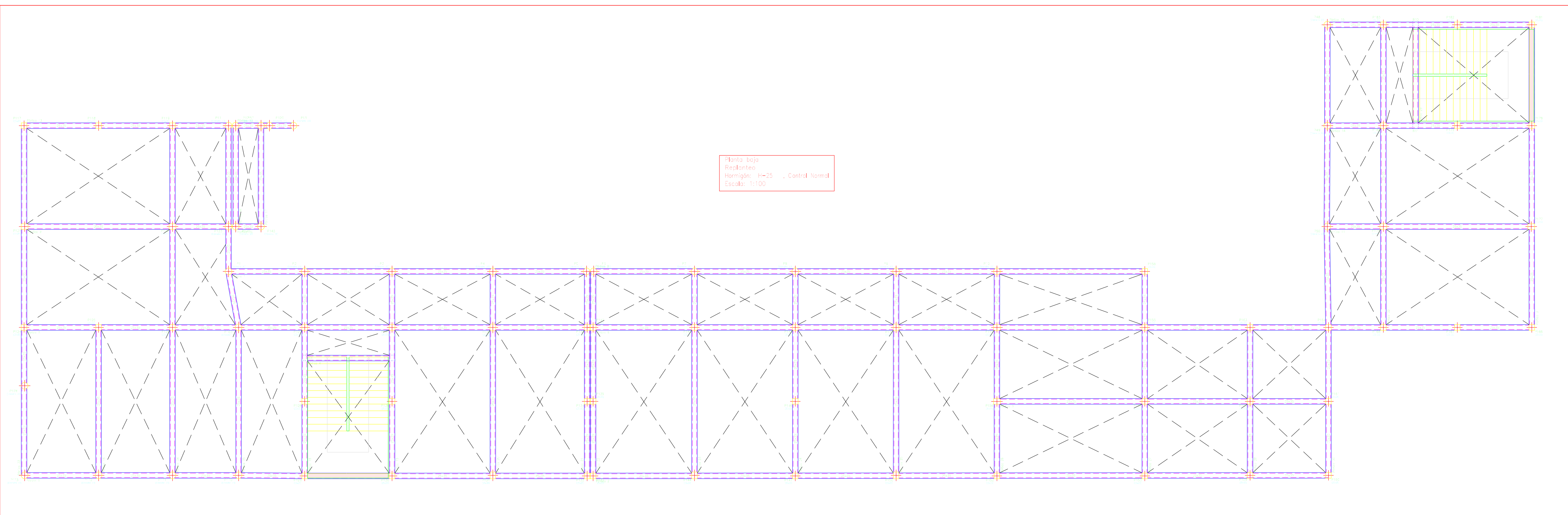
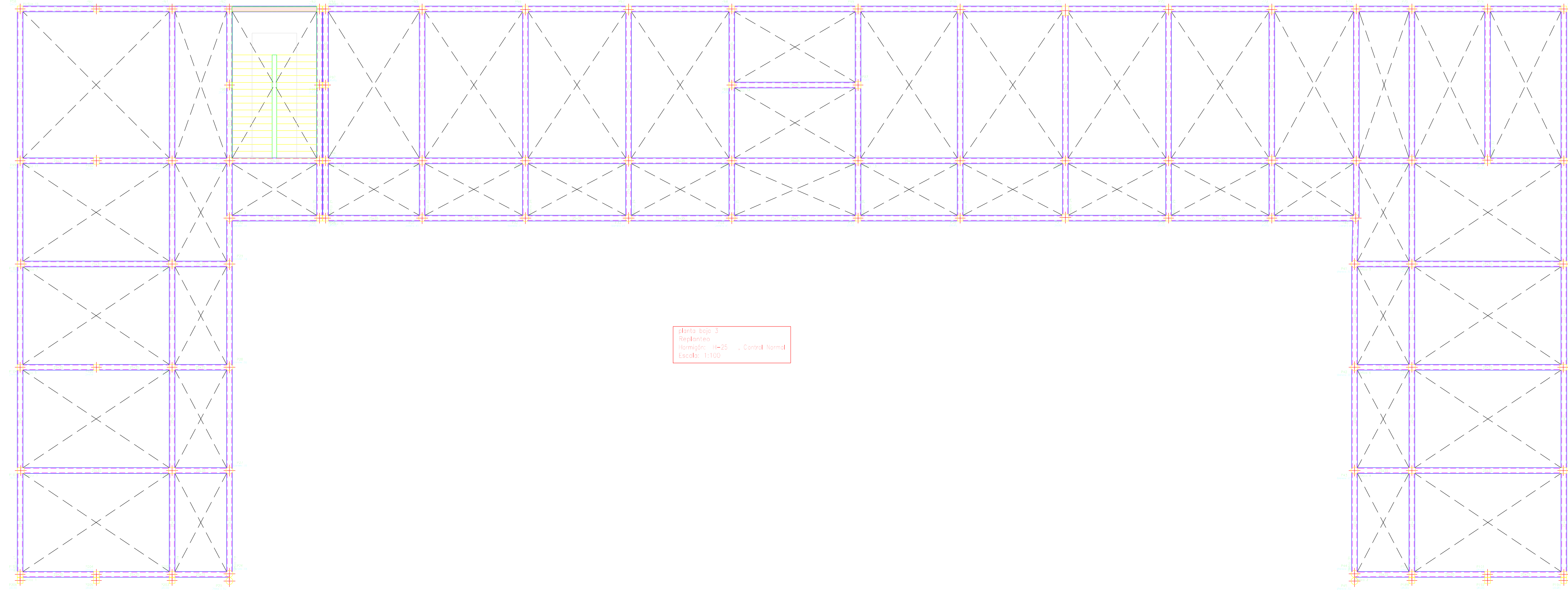
Elemento	Pos.	Diam.	No.	Long. (cm)	Total AH-500CN (cm)	Total AH-500CN (kg)
Pórtico 4	1	Ø12	2	100	200	3.14
	2	Ø12	2	100	200	3.14
	3	Ø12	2	100	200	3.14
	4	Ø12	2	100	200	3.14
	5	Ø12	2	100	200	3.14
	6	Ø12	2	100	200	3.14
	7	Ø12	2	100	200	3.14
	8	Ø12	2	100	200	3.14
	9	Ø12	2	100	200	3.14
	10	Ø12	2	100	200	3.14
Total: 31.42						31.42



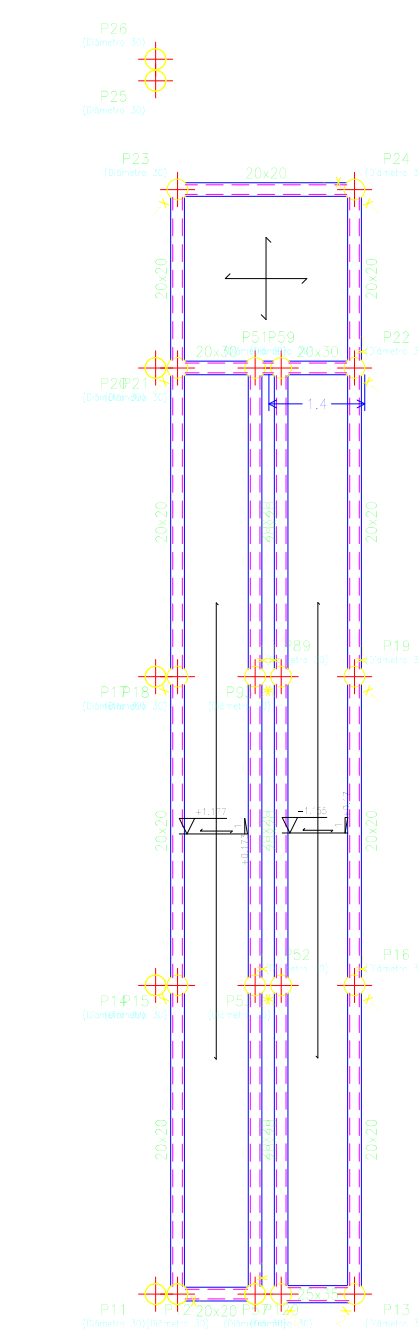
Elemento	Pos.	Diam.	No.	Long. (cm)	Total AH-500CN (cm)	Total AH-500CN (kg)
Pórtico 5	1	Ø12	2	100	200	3.14
	2	Ø12	2	100	200	3.14
	3	Ø12	2	100	200	3.14
	4	Ø12	2	100	200	3.14
	5	Ø12	2	100	200	3.14
	6	Ø12	2	100	200	3.14
	7	Ø12	2	100	200	3.14
	8	Ø12	2	100	200	3.14
	9	Ø12	2	100	200	3.14
	10	Ø12	2	100	200	3.14
Total: 31.42						31.42

Elemento	Pos.	Diam.	No.	Long. (cm)	Total AH-500CN (cm)	Total AH-500CN (kg)
Pórtico 7	1	Ø12	2	100	200	3.14
	2	Ø12	2	100	200	3.14
	3	Ø12	2	100	200	3.14
	4	Ø12	2	100	200	3.14
	5	Ø12	2	100	200	3.14
	6	Ø12	2	100	200	3.14
	7	Ø12	2	100	200	3.14
	8	Ø12	2	100	200	3.14
	9	Ø12	2	100	200	3.14
	10	Ø12	2	100	200	3.14
Total: 31.42						31.42

PLANO DE LA RAMPA



ESCALERA
Norma: IN-20, Control Normal
IN-100, Control Normal
Escala: 1:100



Elemento	Pos.	Dim.	No.	Long. (m)	Sección	Peso (kg)
Estructura de acero	1	Ø8	10	100	Ø8	100
	2	Ø8	10	100	Ø8	100
	3	Ø8	10	100	Ø8	100
	4	Ø8	10	100	Ø8	100
	5	Ø8	10	100	Ø8	100
	6	Ø8	10	100	Ø8	100
	7	Ø8	10	100	Ø8	100
	8	Ø8	10	100	Ø8	100
	9	Ø8	10	100	Ø8	100
	10	Ø8	10	100	Ø8	100
Total						1000

Resumen Acero	Long. total (m)	Peso x 100 (kg)
Detalle de rampa	400	40
Armadura longitudinal superior	Ø8	96.7
IN-1000 N	Ø8	6.4
		4
		53

Elemento	Pos.	Dim.	No.	Long. (m)	Sección	Peso (kg)
Estructura de acero	1	Ø8	10	100	Ø8	100
	2	Ø8	10	100	Ø8	100
	3	Ø8	10	100	Ø8	100
	4	Ø8	10	100	Ø8	100
Total						400

Resumen Acero	Long. total (m)	Peso x 100 (kg)
Detalle de rampa	400	40
Armadura longitudinal inferior	Ø8	96.7
IN-1000 N	Ø8	6.4
		4
		53

Detalle de rampa
Resistencia
Escala: 1:100

Elemento	Pos.	Dim.	No.	Long. (m)	Sección	Peso (kg)
Estructura de acero	1	Ø8	10	100	Ø8	100
	2	Ø8	10	100	Ø8	100
	3	Ø8	10	100	Ø8	100
	4	Ø8	10	100	Ø8	100
Total						400

Resumen Acero	Long. total (m)	Peso x 100 (kg)
Detalle de rampa	400	40
Armadura longitudinal inferior	Ø8	96.7
IN-1000 N	Ø8	6.4
		4
		53

Elemento	Pos.	Dim.	No.	Long. (m)	Sección	Peso (kg)
Estructura de acero	1	Ø8	10	100	Ø8	100
	2	Ø8	10	100	Ø8	100
	3	Ø8	10	100	Ø8	100
	4	Ø8	10	100	Ø8	100
	5	Ø8	10	100	Ø8	100
	6	Ø8	10	100	Ø8	100
	7	Ø8	10	100	Ø8	100
	8	Ø8	10	100	Ø8	100
	9	Ø8	10	100	Ø8	100
	10	Ø8	10	100	Ø8	100
Total						1000

Resumen Acero	Long. total (m)	Peso x 100 (kg)
Detalle de rampa	400	40
Armadura longitudinal superior	Ø8	96.7
IN-1000 N	Ø8	6.4
		4
		53