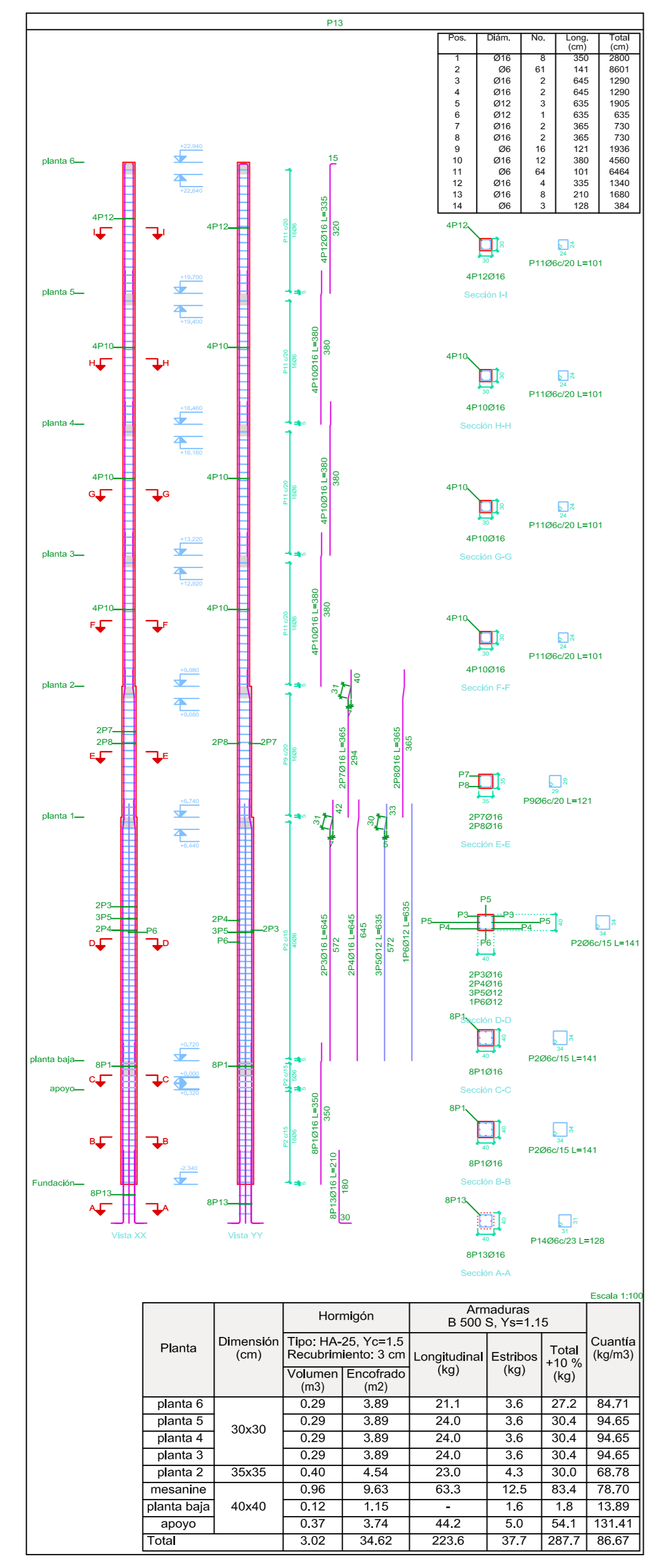
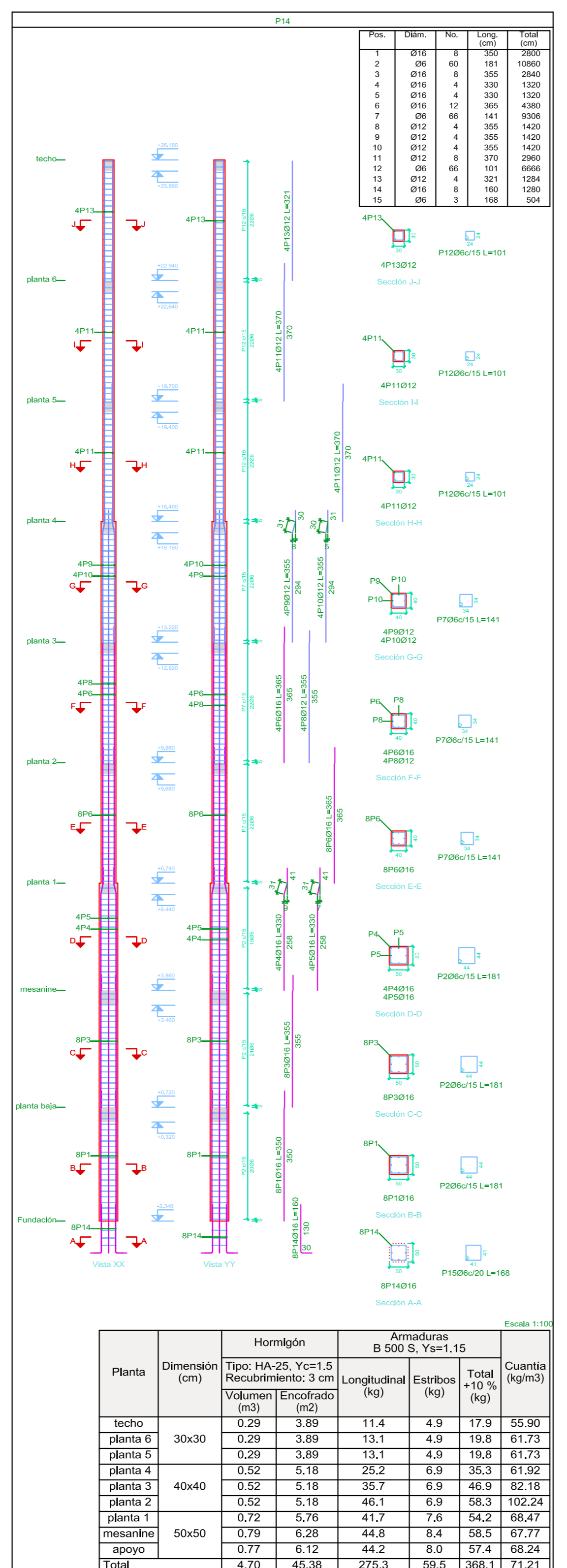


Elemento	Pos.	Diam.	No.	Esquema (cm)	Long. (cm)	Total (500 S. Ys=1.15)	Vol.	Diam.	No.	Long.	Total
P12	1	Ø30	4	[Esquema]	370	1480	36.5				
	2	Ø30	4	[Esquema]	370	1480	36.5				
	3	Ø30	4	[Esquema]	370	1480	36.5				
	4	Ø30	4	[Esquema]	370	1480	36.5				
	5	Ø30	4	[Esquema]	370	1480	36.5				
	6	Ø30	4	[Esquema]	370	1480	36.5				
	7	Ø30	4	[Esquema]	370	1480	36.5				
	8	Ø30	4	[Esquema]	370	1480	36.5				
	9	Ø30	4	[Esquema]	370	1480	36.5				
	10	Ø30	4	[Esquema]	370	1480	36.5				
	11	Ø30	4	[Esquema]	370	1480	36.5				
	12	Ø30	4	[Esquema]	370	1480	36.5				
	13	Ø30	4	[Esquema]	370	1480	36.5				
	14	Ø30	4	[Esquema]	370	1480	36.5				
	15	Ø30	4	[Esquema]	370	1480	36.5				
	16	Ø30	4	[Esquema]	370	1480	36.5				
	17	Ø30	4	[Esquema]	370	1480	36.5				
	18	Ø30	4	[Esquema]	370	1480	36.5				
	19	Ø30	4	[Esquema]	370	1480	36.5				



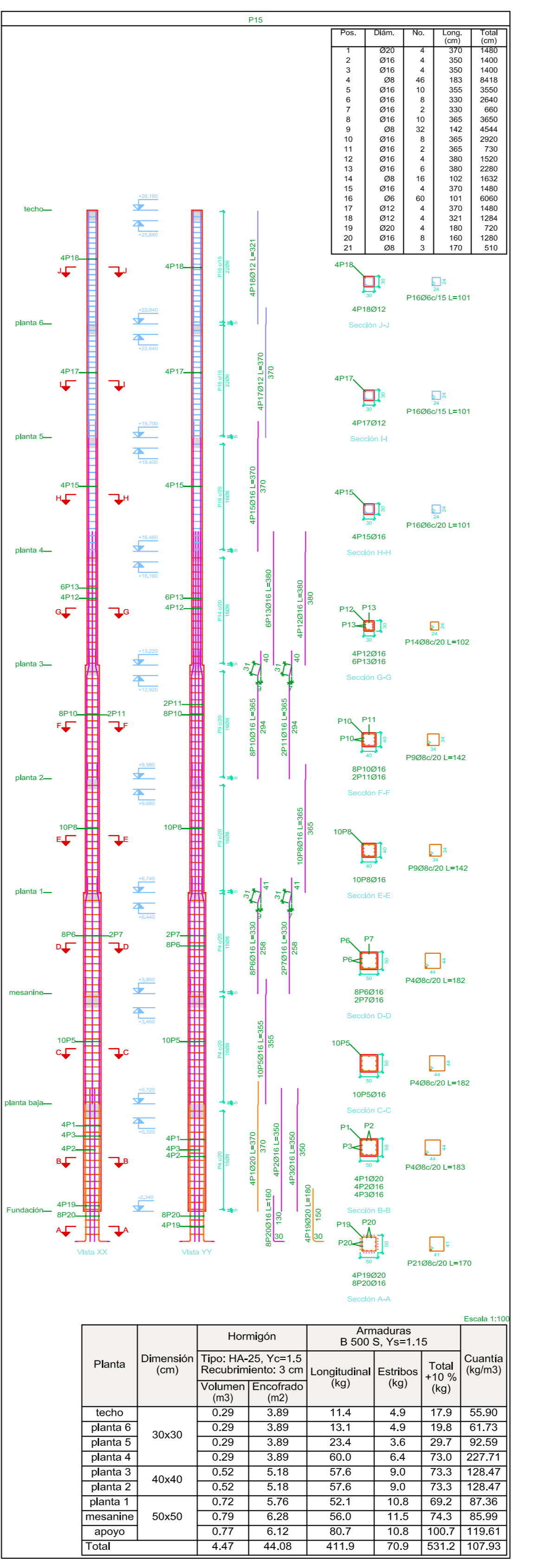
Planta	Dimension (cm)	Hormigón Tipo: HA-25, Yc=1.5 Recubrimiento: 3 cm	Armaduras B 500 S. Ys=1.15	Cuanta
		Longitudinal (m³)	Estribos (kg)	Total (+10%) (kg)
planta 6	30x30	0.29	3.89	21.1 3.6 27.2 84.71
planta 5	30x30	0.29	3.89	24.0 3.6 30.4 94.65
planta 4	30x30	0.29	3.89	24.0 3.6 30.4 94.65
planta 3	35x35	0.40	4.54	25.0 4.3 30.0 89.76
mesanina	40x40	0.58	8.63	63.3 12.3 83.4 178.70
planta baja		0.12	1.15	- 1.6 1.8 13.89
apoyo		0.37	3.74	44.2 5.0 54.1 131.41
Total		3.02	34.62	223.8 37.1 287.1 95.61



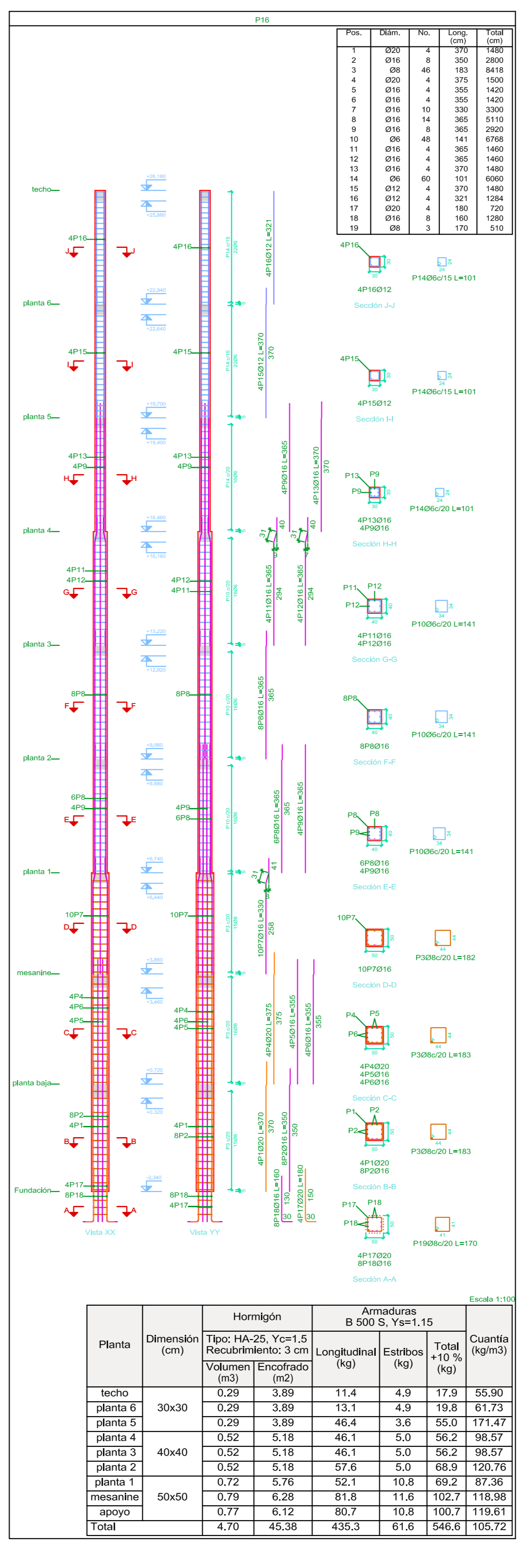
Planta	Dimension (cm)	Hormigón Tipo: HA-25, Yc=1.5 Recubrimiento: 3 cm	Armaduras B 500 S. Ys=1.15	Cuanta
		Longitudinal (m³)	Estribos (kg)	Total (+10%) (kg)
techo	30x30	0.29	3.89	11.4 4.9 17.9 55.90
planta 6	30x30	0.29	3.89	13.1 4.9 19.8 61.73
planta 5	30x30	0.29	3.89	13.1 4.9 19.8 61.73
planta 4	40x40	0.52	5.18	25.2 6.9 35.3 101.52
planta 3	40x40	0.52	5.18	35.7 6.9 46.9 142.16
planta 2	40x40	0.52	5.18	46.1 6.9 58.3 182.24
planta 1	40x40	0.72	5.76	47.7 7.6 54.2 166.97
mesanina	50x50	0.79	6.28	44.6 6.4 56.5 177.77
apoyo		0.77	6.12	44.2 8.0 57.4 182.24
Total		4.70	45.38	275.3 59.5 366.1 71.27

Resumen Acero Columnas	Long. total (m)	Peso+10% (kg)	Total
B 500 S. Ys=1.15	08	4381.9	1070
	Ø8	519.2	225
	Ø10	9.0	1
	Ø12	1580.9	162
	Ø16	2628.7	450
	Ø20	119.2	323 7731

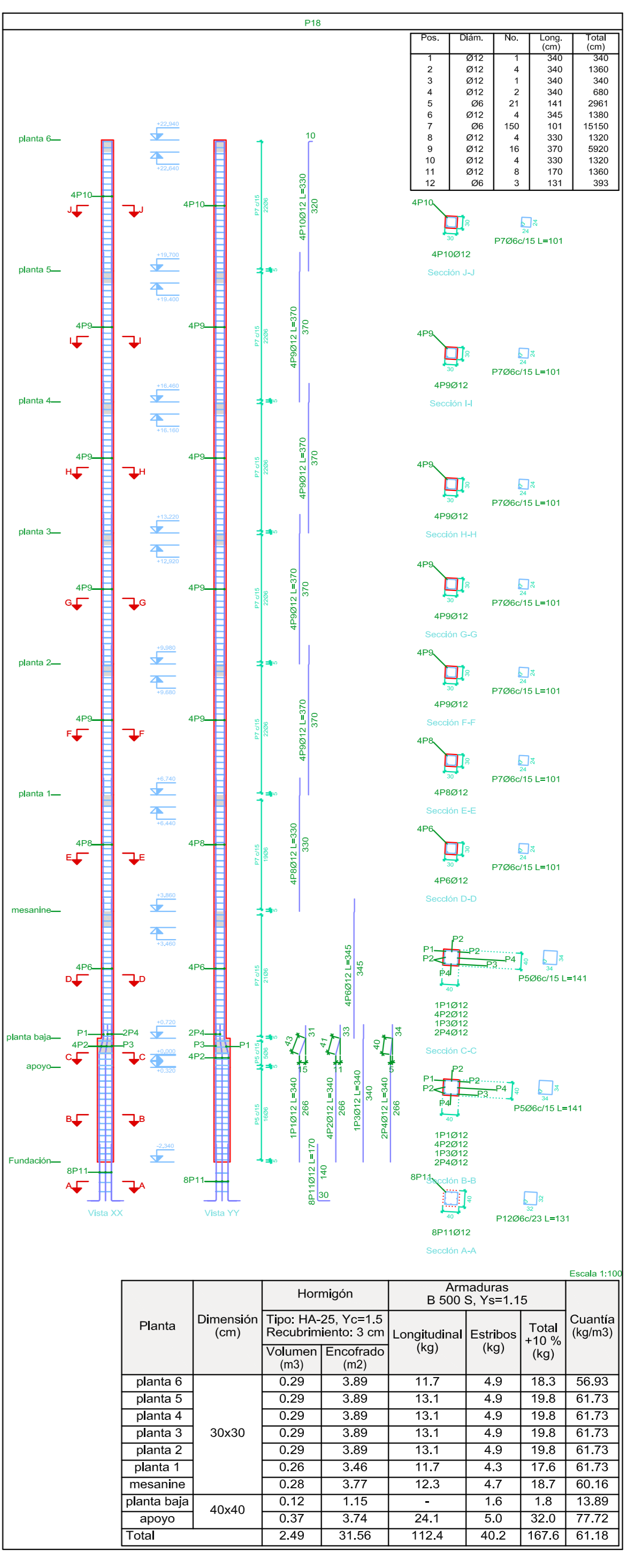
Pilares que nacen en apoyo y mueren en techo
Hormigón: HA-25, Yc=1.5
Acero en barras: B 500 S. Ys=1.15
Acero en estribos: B 500 S. Ys=1.15



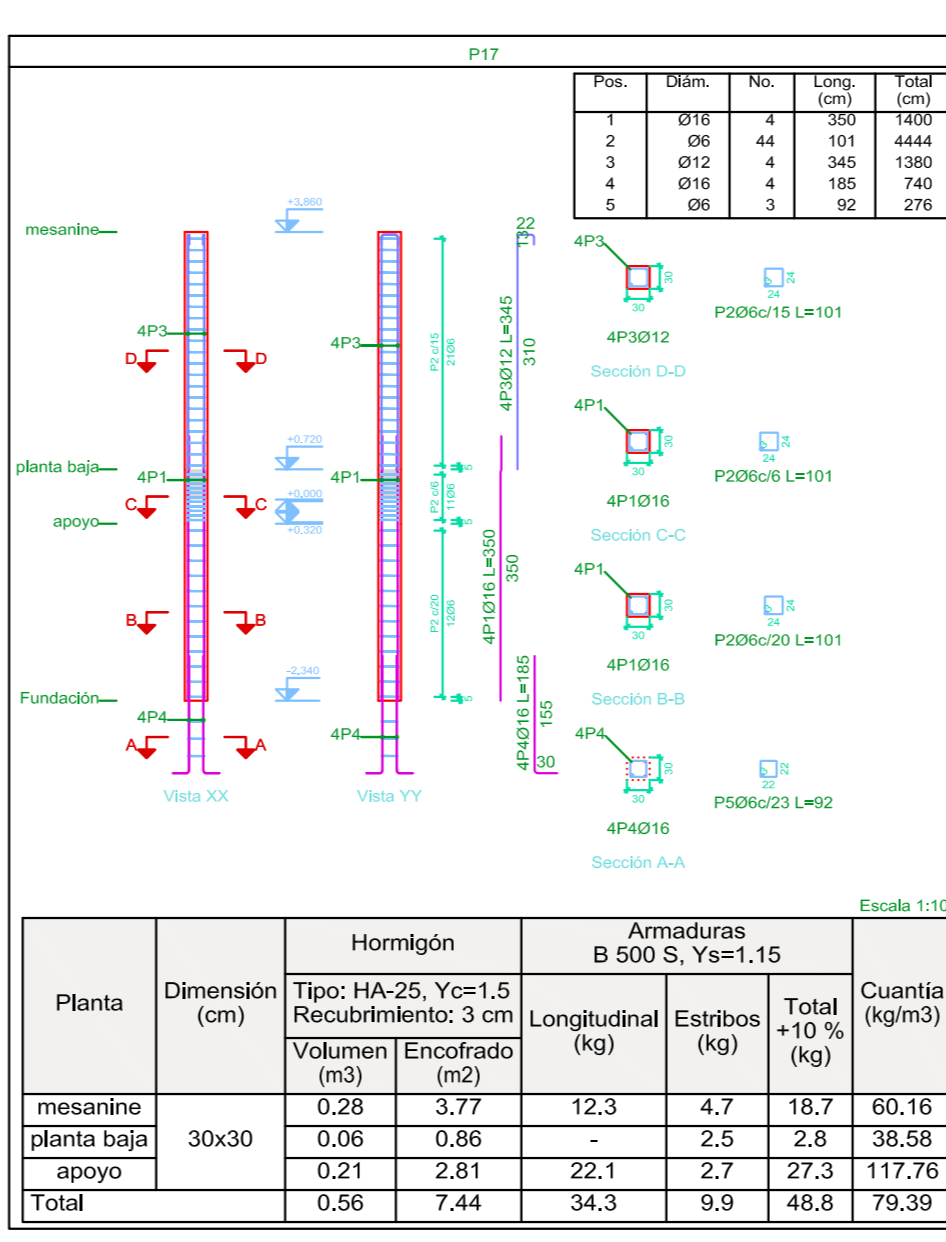
Planta	Dimension (cm)	Hormigón Tipo: HA-25, Yc=1.5 Recubrimiento: 3 cm	Armaduras B 500 S. Ys=1.15	Cuanta
		Longitudinal (m³)	Estribos (kg)	Total (+10%) (kg)
techo	30x30	0.29	3.89	11.4 4.9 17.9 55.90
planta 6	30x30	0.29	3.89	13.1 4.9 19.8 61.73
planta 5	30x30	0.29	3.89	13.1 4.9 19.8 61.73
planta 4	40x40	0.52	5.18	25.2 6.9 35.3 101.52
planta 3	40x40	0.52	5.18	35.7 6.9 46.9 142.16
planta 2	40x40	0.52	5.18	46.1 6.9 58.3 182.24
planta 1	40x40	0.72	5.76	47.7 7.6 54.2 166.97
mesanina	50x50	0.79	6.28	44.6 6.4 56.5 177.77
apoyo		0.77	6.12	44.2 8.0 57.4 182.24
Total		4.47	44.08	411.9 70.9 531.2 107.93




Planta	Dimension (cm)	Hormigón Tipo: HA-25, Yc=1.5 Recubrimiento: 3 cm	Armaduras B 500 S. Ys=1.15	Cuanta
		Longitudinal (m³)	Estribos (kg)	Total (+10%) (kg)
techo	30x30	0.29	3.89	11.4 4.9 17.9 55.90
planta 6	30x30	0.29	3.89	13.1 4.9 19.8 61.73
planta 5	30x30	0.29	3.89	13.1 4.9 19.8 61.73
planta 4	40x40	0.52	5.18	25.2 6.9 35.3 101.52
planta 3	40x40	0.52	5.18	35.7 6.9 46.9 142.16
planta 2	40x40	0.52	5.18	46.1 6.9 58.3 182.24
planta 1	40x40	0.72	5.76	47.7 7.6 54.2 166.97
mesanina	50x50	0.79	6.28	44.6 6.4 56.5 177.77
apoyo		0.77	6.12	44.2 8.0 57.4 182.24
Total		4.70	45.38	435.3 61.6 546.6 105.72



Planta	Dimension (cm)	Hormigón Tipo: HA-25, Yc=1.5 Recubrimiento: 3 cm	Armaduras B 500 S. Ys=1.15	Cuanta
		Longitudinal (m³)	Estribos (kg)	Total (+10%) (kg)
techo	30x30	0.29	3.89	11.4 4.9 17.9 55.90
planta 6	30x30	0.29	3.89	13.1 4.9 19.8 61.73
planta 5	30x30	0.29	3.89	13.1 4.9 19.8 61.73
planta 4	40x40	0.52	5.18	25.2 6.9 35.3 101.52
planta 3	40x40	0.52	5.18	35.7 6.9 46.9 142.16
planta 2	40x40	0.52	5.18	46.1 6.9 58.3 182.24
planta 1	40x40	0.72	5.76	47.7 7.6 54.2 166.97
mesanina	50x50	0.79	6.28	44.6 6.4 56.5 177.77
planta baja		0.12	1.15	- 1.6 1.8 13.89
apoyo		0.37	3.74	44.2 5.0 54.1 131.41
Total		2.49	31.56	112.4 40.2 107.6 61.18



Planta	Dimension (cm)	Hormigón Tipo: HA-25, Yc=1.5 Recubrimiento: 3 cm	Armaduras B 500 S. Ys=1.15	Cuanta
		Longitudinal (m³)	Estribos (kg)	Total (+10%) (kg)
mesanina	30x30	0.28	3.77	12.3 4.7 18.7 60.16
planta baja		0.06	0.66	- 2.5 2.8 38.58
apoyo		0.24	2.81	22.1 2.7 27.3 117.65
Total		0.56	7.44	34.3 9.9 48.8 79.39


**UNIVERSIDAD AUTONOMA
"JUAN MISAE SARACHO"
FACULTAD DE CIENCIAS Y
TECNOLOGIA**

PROYECTO:
**DESENHO ESTRUCTURAL DEL EDIFICIO
PARA DEPARTAMENTOS EN EL BARRIO
LAS PANOSAS**

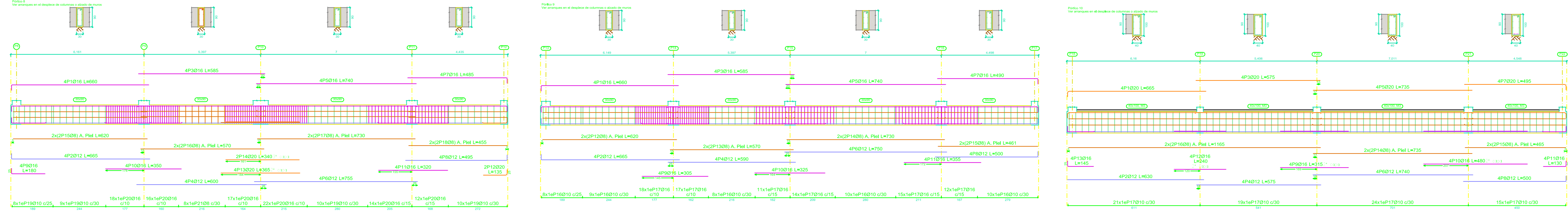
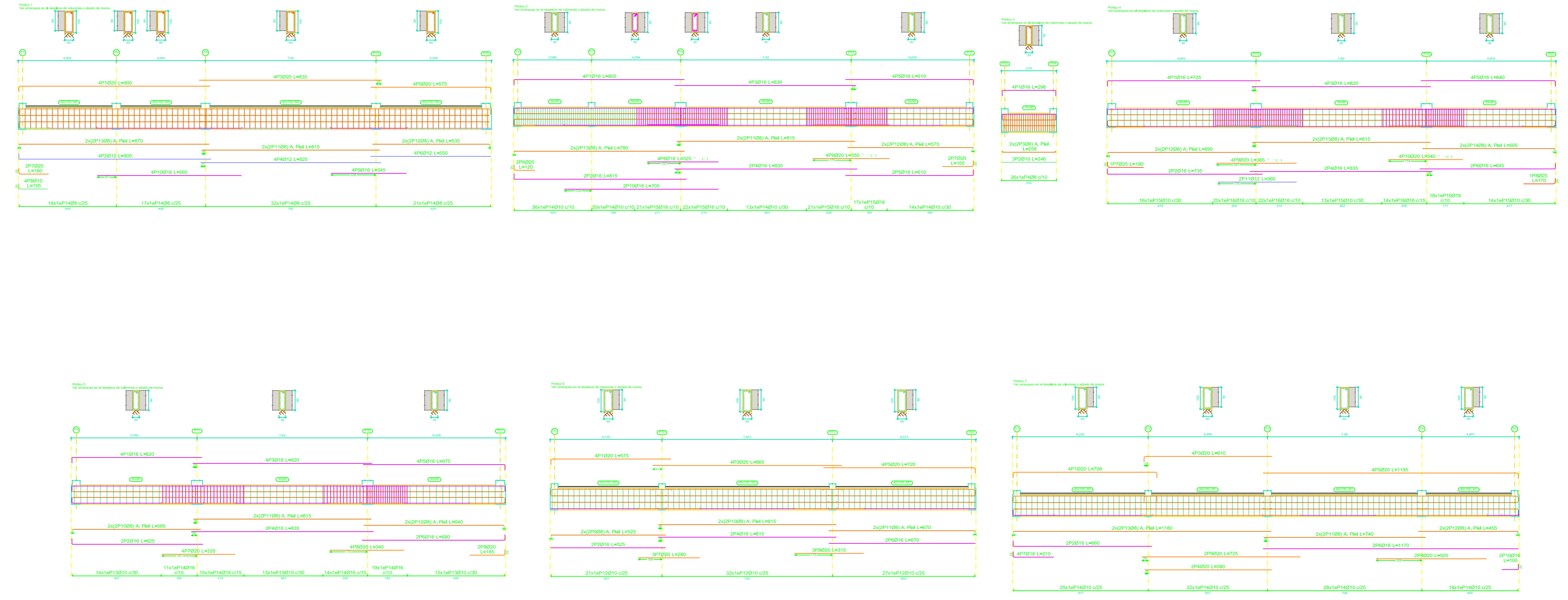
CARACTER: DESPIECÉ DE LAS COLUMNAS P13 AL P18 **DOCENTE:** ING. CARRASCO ARNOLD PAUL DENNIS.

UNIVERSITARIO: HURTADO CACERES JOSUE **ESCALA:** 1:100 **LAMINA:** 10/22

VoBo **GRUPO: IV** **FECHA: JULIO DE 2022**

Elemento	Pos.	Diam.	No.	Esquema	Long. (cm)	Peso (kg)
Pórtico 1						
1	010	4	300	300	3000	68.8
2	010	4	300	300	3000	68.8
3	010	4	300	300	3000	68.8
4	010	4	300	300	3000	68.8
5	010	4	300	300	3000	68.8
6	010	4	300	300	3000	68.8
7	010	4	300	300	3000	68.8
8	010	4	300	300	3000	68.8
9	010	4	300	300	3000	68.8
10	010	4	300	300	3000	68.8
11	010	4	300	300	3000	68.8
12	010	4	300	300	3000	68.8
13	010	4	300	300	3000	68.8
14	010	4	300	300	3000	68.8
Pórtico 2						
1	010	4	300	300	3000	68.8
2	010	4	300	300	3000	68.8
3	010	4	300	300	3000	68.8
4	010	4	300	300	3000	68.8
5	010	4	300	300	3000	68.8
6	010	4	300	300	3000	68.8
7	010	4	300	300	3000	68.8
8	010	4	300	300	3000	68.8
9	010	4	300	300	3000	68.8
10	010	4	300	300	3000	68.8
11	010	4	300	300	3000	68.8
12	010	4	300	300	3000	68.8
13	010	4	300	300	3000	68.8
14	010	4	300	300	3000	68.8
Pórtico 3						
1	010	4	300	300	3000	68.8
2	010	4	300	300	3000	68.8
3	010	4	300	300	3000	68.8
4	010	4	300	300	3000	68.8
5	010	4	300	300	3000	68.8
6	010	4	300	300	3000	68.8
7	010	4	300	300	3000	68.8
8	010	4	300	300	3000	68.8
9	010	4	300	300	3000	68.8
10	010	4	300	300	3000	68.8
11	010	4	300	300	3000	68.8
12	010	4	300	300	3000	68.8
13	010	4	300	300	3000	68.8
14	010	4	300	300	3000	68.8
Pórtico 4						
1	010	4	300	300	3000	68.8
2	010	4	300	300	3000	68.8
3	010	4	300	300	3000	68.8
4	010	4	300	300	3000	68.8
5	010	4	300	300	3000	68.8
6	010	4	300	300	3000	68.8
7	010	4	300	300	3000	68.8
8	010	4	300	300	3000	68.8
9	010	4	300	300	3000	68.8
10	010	4	300	300	3000	68.8
11	010	4	300	300	3000	68.8
12	010	4	300	300	3000	68.8
13	010	4	300	300	3000	68.8
14	010	4	300	300	3000	68.8
Pórtico 5						
1	010	4	300	300	3000	68.8
2	010	4	300	300	3000	68.8
3	010	4	300	300	3000	68.8
4	010	4	300	300	3000	68.8
5	010	4	300	300	3000	68.8
6	010	4	300	300	3000	68.8
7	010	4	300	300	3000	68.8
8	010	4	300	300	3000	68.8
9	010	4	300	300	3000	68.8
10	010	4	300	300	3000	68.8
11	010	4	300	300	3000	68.8
12	010	4	300	300	3000	68.8
13	010	4	300	300	3000	68.8
14	010	4	300	300	3000	68.8
Pórtico 6						
1	010	4	300	300	3000	68.8
2	010	4	300	300	3000	68.8
3	010	4	300	300	3000	68.8
4	010	4	300	300	3000	68.8
5	010	4	300	300	3000	68.8
6	010	4	300	300	3000	68.8
7	010	4	300	300	3000	68.8
8	010	4	300	300	3000	68.8
9	010	4	300	300	3000	68.8
10	010	4	300	300	3000	68.8
11	010	4	300	300	3000	68.8
12	010	4	300	300	3000	68.8
13	010	4	300	300	3000	68.8
14	010	4	300	300	3000	68.8
Pórtico 7						
1	010	4	300	300	3000	68.8
2	010	4	300	300	3000	68.8
3	010	4	300	300	3000	68.8
4	010	4	300	300	3000	68.8
5	010	4	300	300	3000	68.8
6	010	4	300	300	3000	68.8
7	010	4	300	300	3000	68.8
8	010	4	300	300	3000	68.8
9	010	4	300	300	3000	68.8
10	010	4	300	300	3000	68.8
11	010	4	300	300	3000	68.8
12	010	4	300	300	3000	68.8
13	010	4	300	300	3000	68.8
14	010	4	300	300	3000	68.8
Pórtico 8						
1	010	4	300	300	3000	68.8
2	010	4	300	300	3000	68.8
3	010	4	300	300	3000	68.8
4	010	4	300	300	3000	68.8
5	010	4	300	300	3000	68.8
6	010	4	300	300	3000	68.8
7	010	4	300	300	3000	68.8
8	010	4	300	300	3000	68.8
9	010	4	300	300	3000	68.8
10	010	4	300	300	3000	68.8
11	010	4	300	300	3000	68.8
12	010	4	300	300	3000	68.8
13	010	4	300	300	3000	68.8
14	010	4	300	300	3000	68.8

Elemento	Pos.	Diam.	No.	Esquema	Long. (cm)	Peso (kg)
Pórtico 9						
1	010	4	300	300	3000	68.8
2	010	4	300	300	3000	68.8
3	010	4	300	300	3000	68.8
4	010	4	300	300	3000	68.8
5	010	4	300	300	3000	68.8
6	010	4	300	300	3000	68.8
7	010	4	300	300	3000	68.8
8	010	4	300	300	3000	68.8
9	010	4	300	300	3000	68.8
10	010	4	300	300	3000	68.8
11	010	4	300	300	3000	68.8
12	010	4	300	300	3000	68.8
13	010	4	300	300	3000	68.8
14	010	4	300	300	3000	68.8
Pórtico 10						
1	010	4	300	300	3000	68.8
2	010	4	300	300	3000	68.8
3	010	4	300	300	3000	68.8
4	010	4	300	300	3000	68.8
5	010	4	300	300	3000	68.8
6	010	4	300	300	3000	68.8
7	010	4	300	300	3000	68.8
8	010	4	300	300	3000	68.8
9	010	4	300	300	3000	68.8
10	010	4	300	300	3000	68.8
11	010	4	300	300	3000	68.8
12	010	4	300	300	3000	68.8
13	010	4	300	300	3000	68.8
14	010	4	300	300	3000	68.8



Fundación
 Despiece de vigas
 Hormigón: HA-30, Yc=1.5
 Acero en barras: B 500 S, Ys=1.15
 Acero en estribos: B 500 S, Ys=1.15
 Escala pórticos 1:100
 Escala secciones 1:100
 Escala huecos 1:100

Resumen Acero	Long. total (m)	Peso=10% (kg)	Total
Plano de pórticos	1117.2	485	
B 500 S, Ys=1.15	08	1238.9	840
	010	297.0	368
	016	1820.0	3160
	020	538.1	1460
	025	3.6	15
			6348

UNIVERSIDAD AUTONOMA "JUAN MISAEL SARACHO"
FACULTAD DE CIENCIAS Y TECNOLOGIA

PROYECTO :
DISEÑO ESTRUCTURAL DEL EDIFICIO PARA DEPARTAMENTOS EN EL BARRIO LAS PANOSAS

CARACTER : DESIECE DE VIGAS DEL SOTANO	DOCENTE : ING. CARRASCO ARNOLD PAUL DENNIS.
UNIVERSITARIO: HURTADO CACERES JOSUE	ESCALA: 1:100
VoBo	GRUPO: IV
FECHA: JULIO DE 2022	

12/22