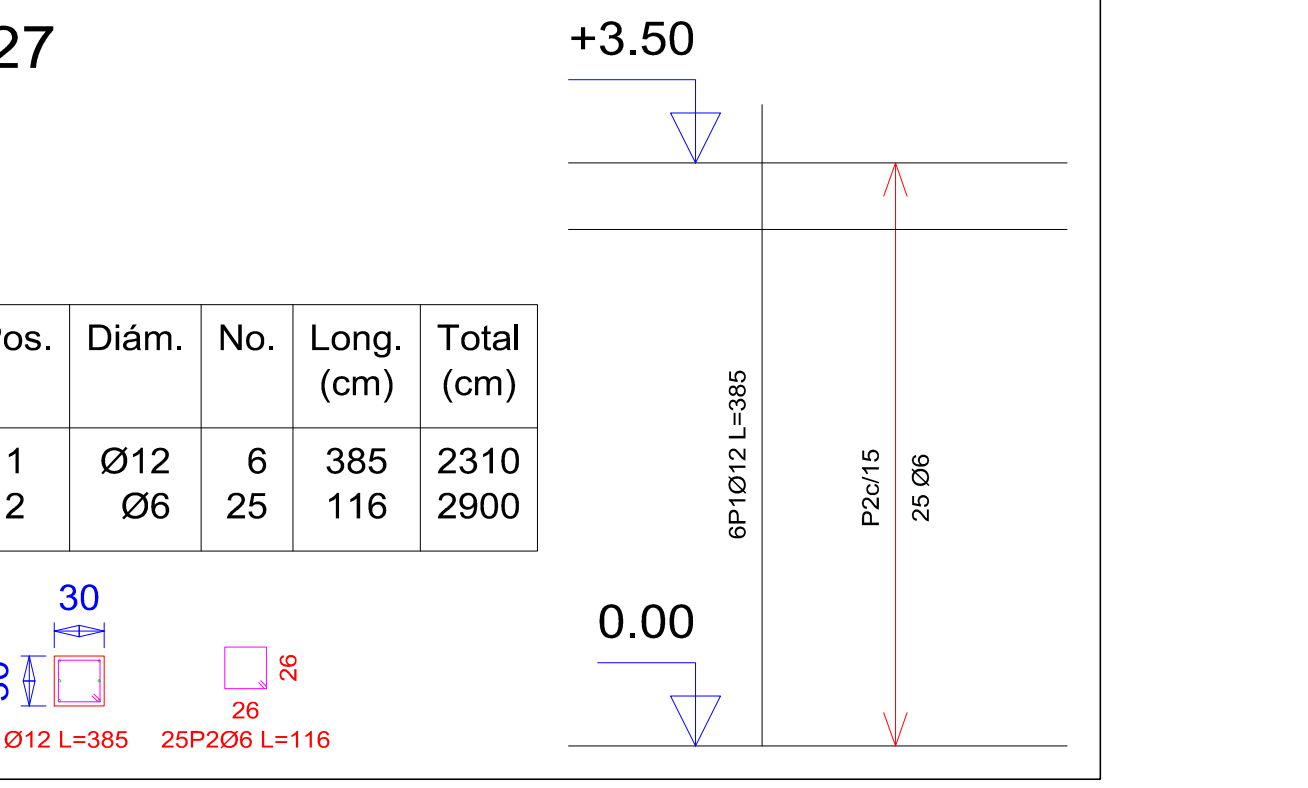
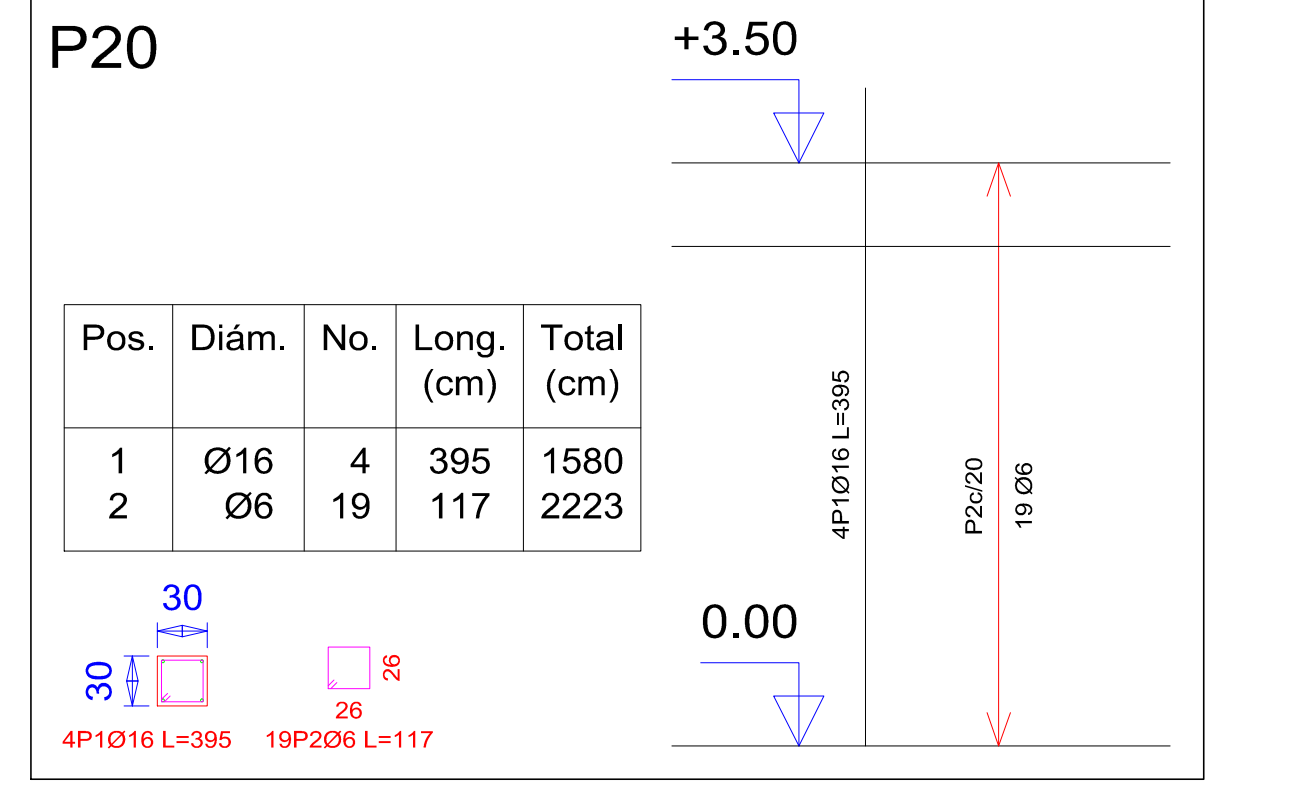
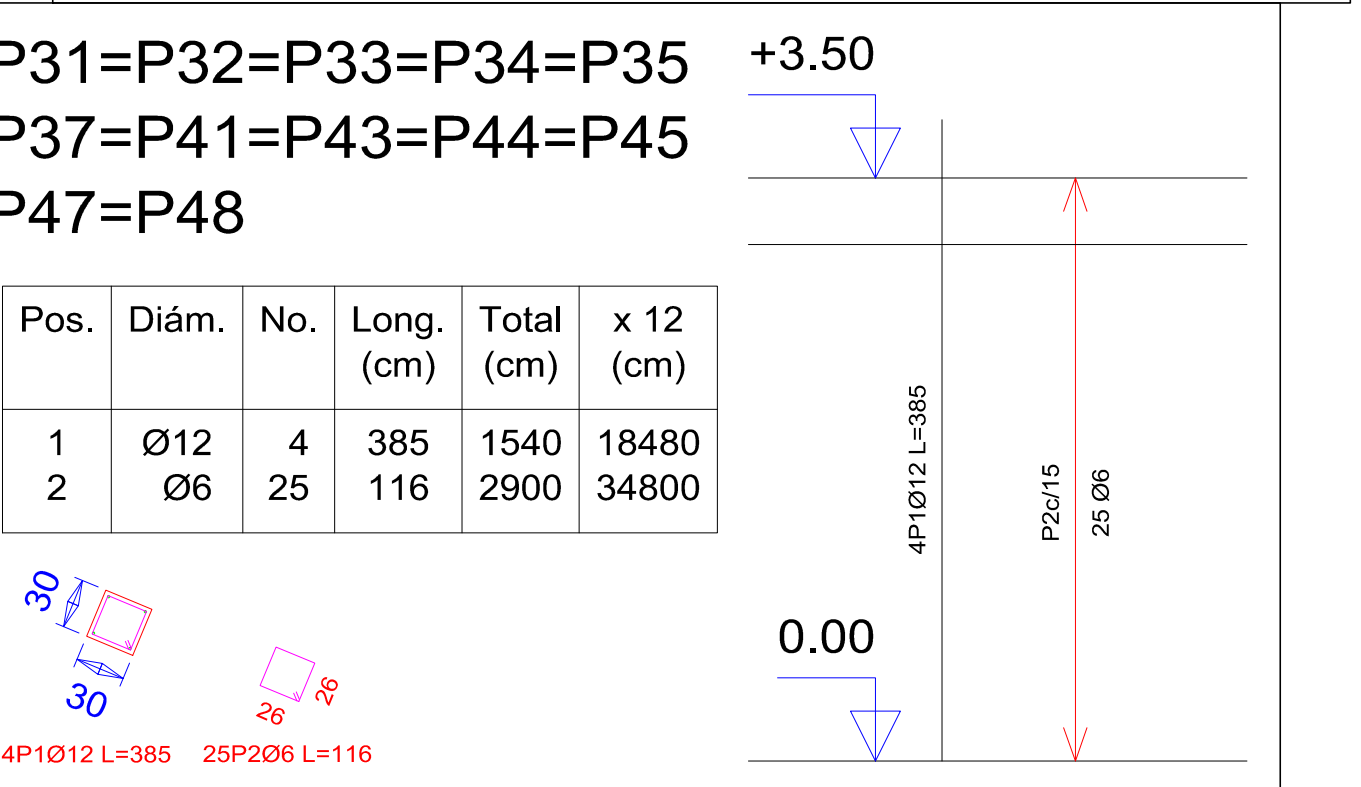
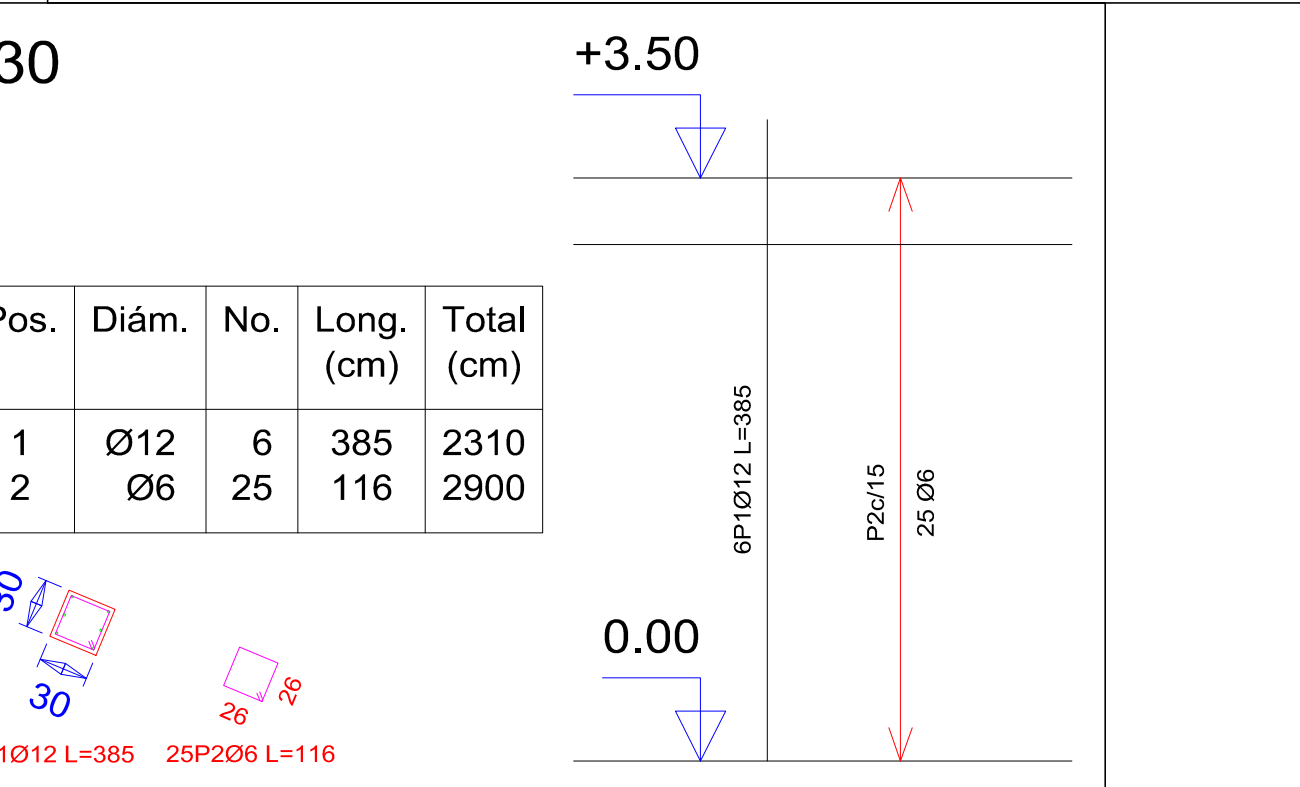
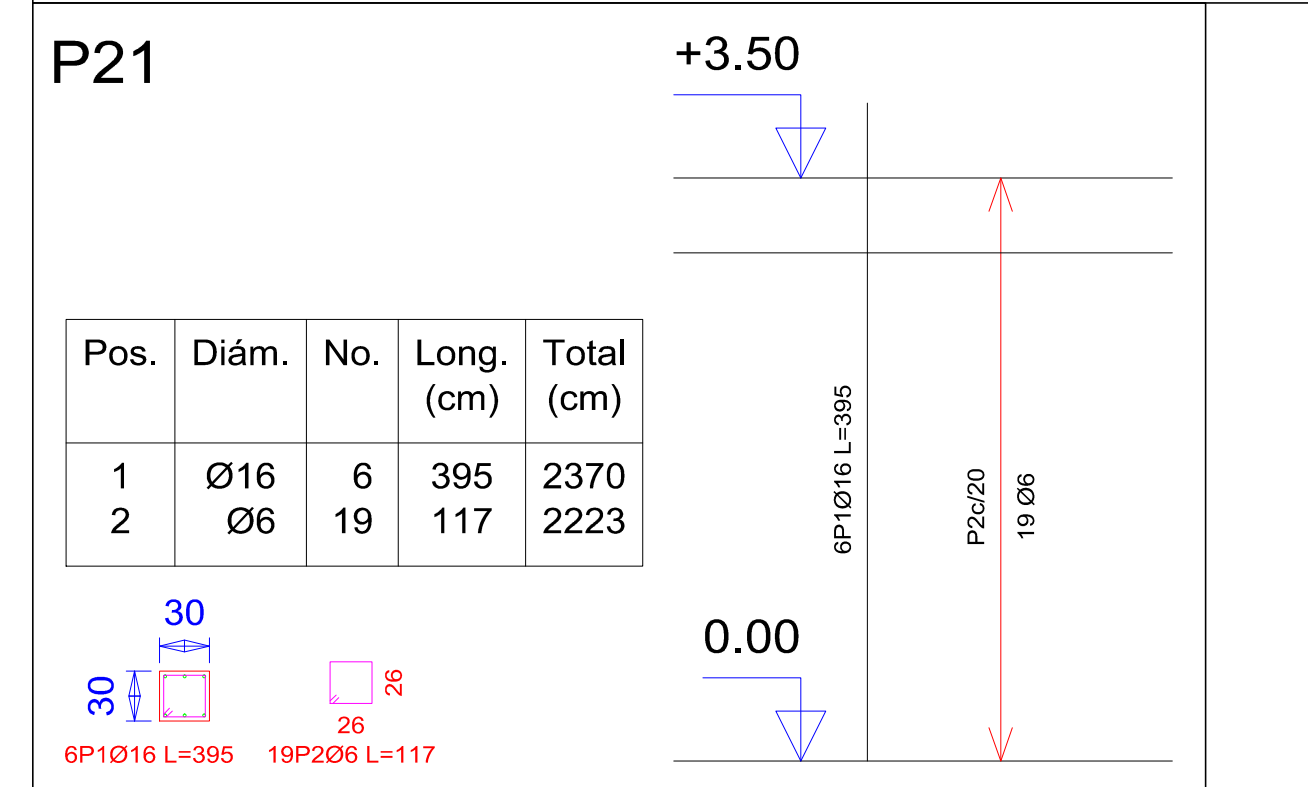
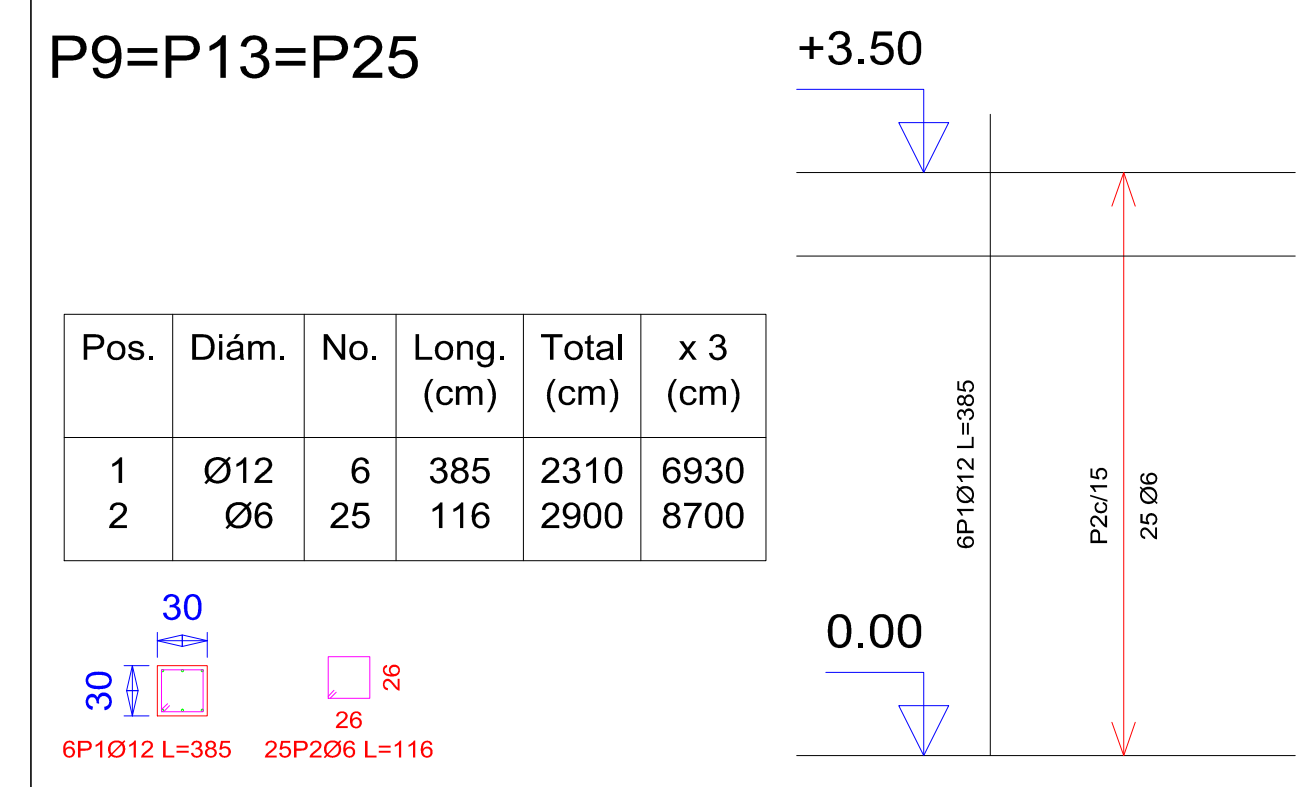
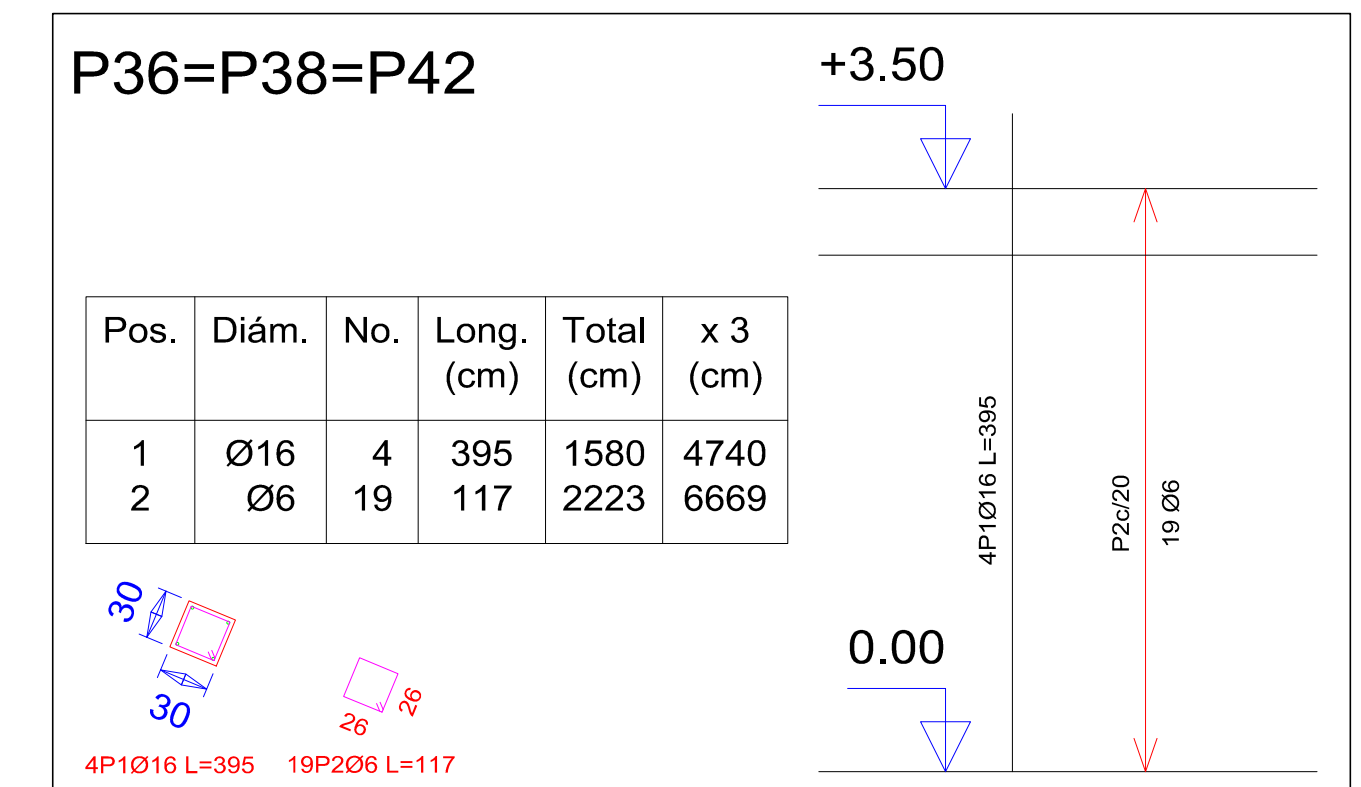
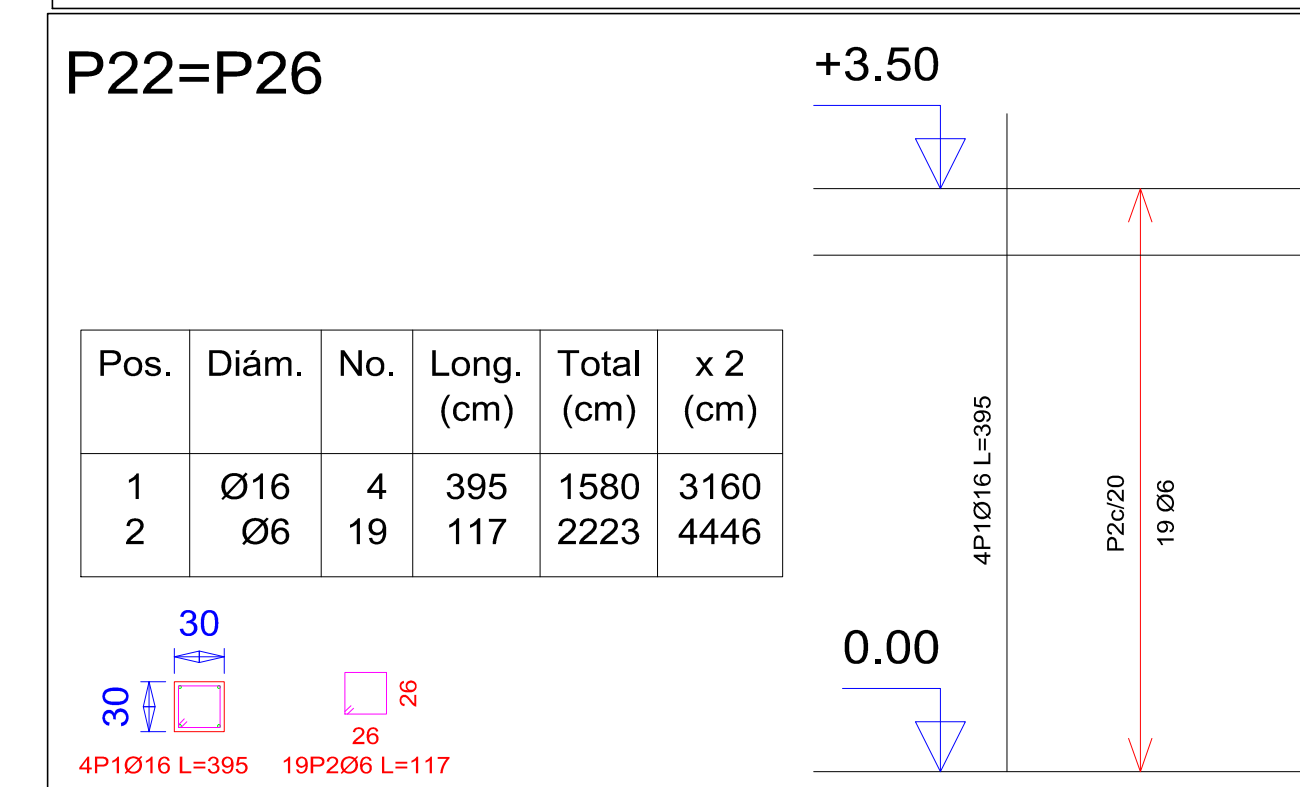
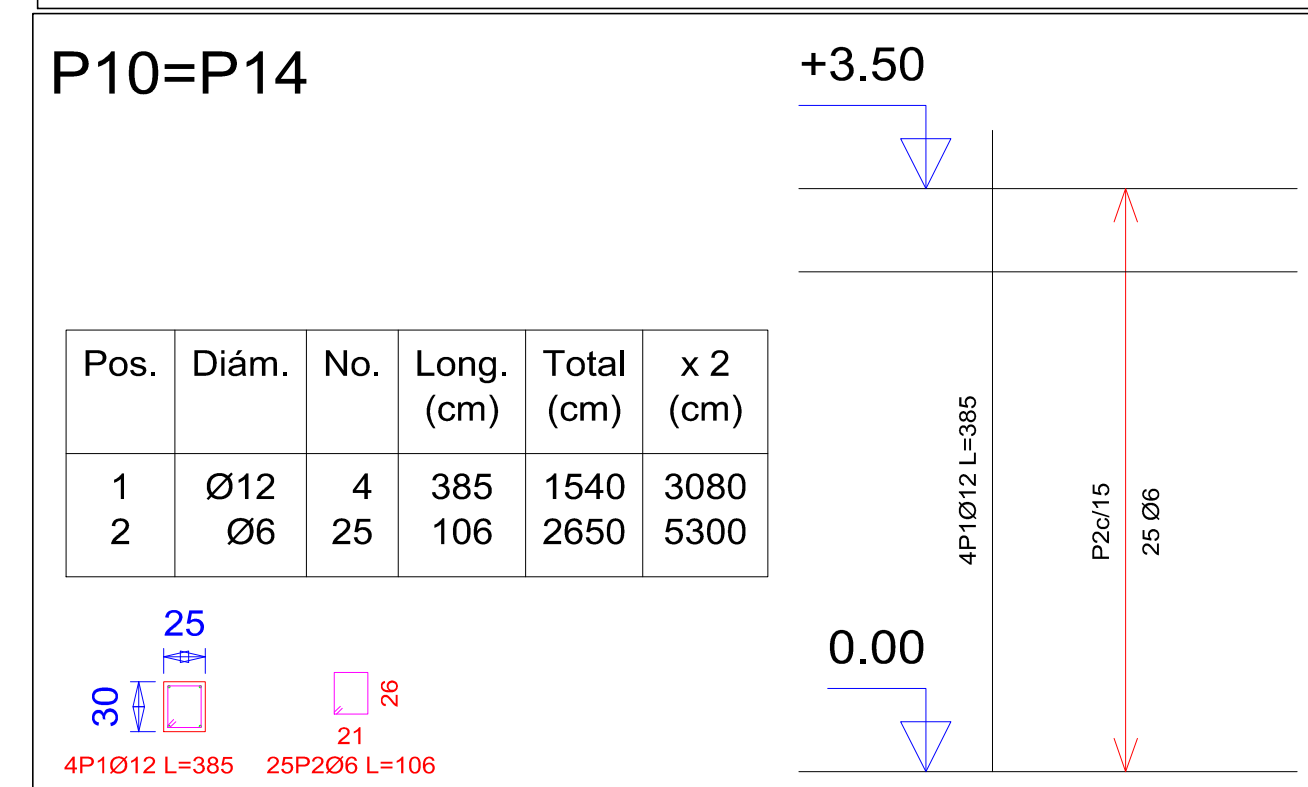
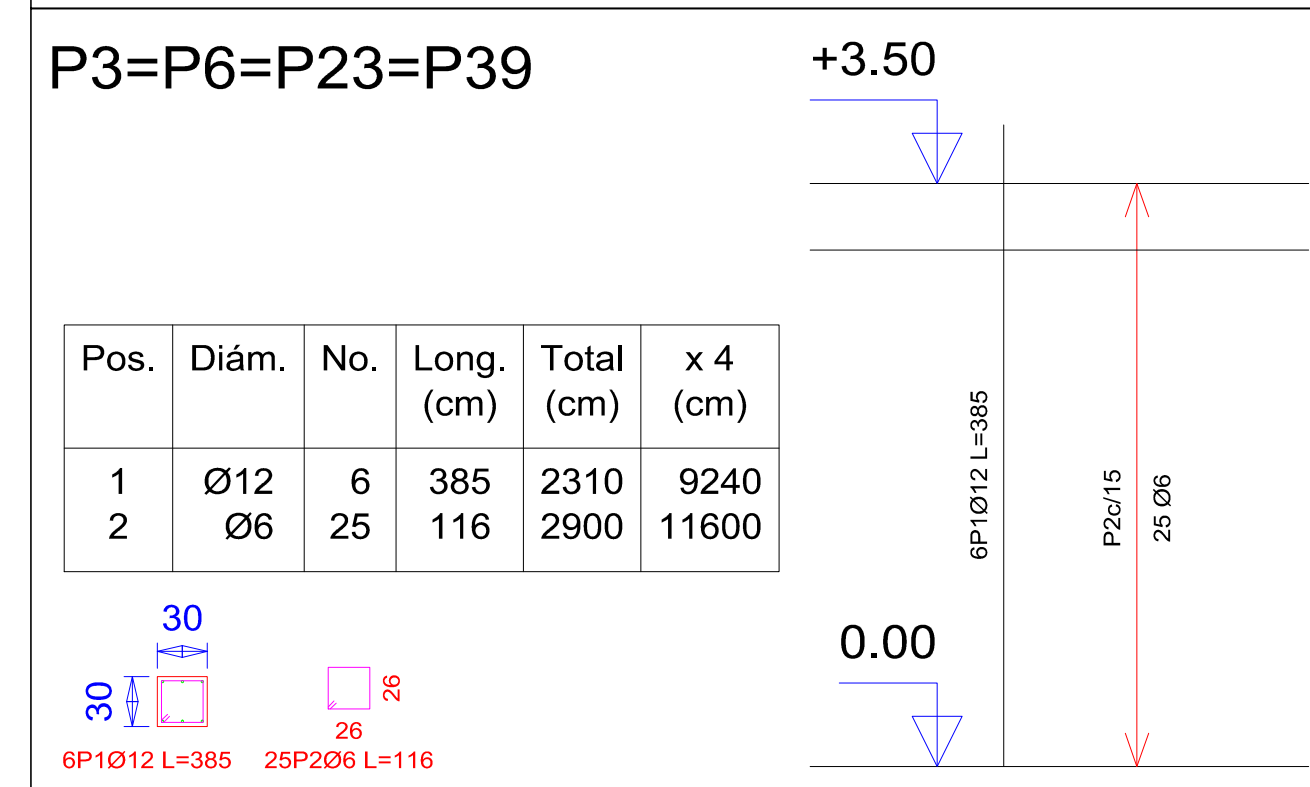
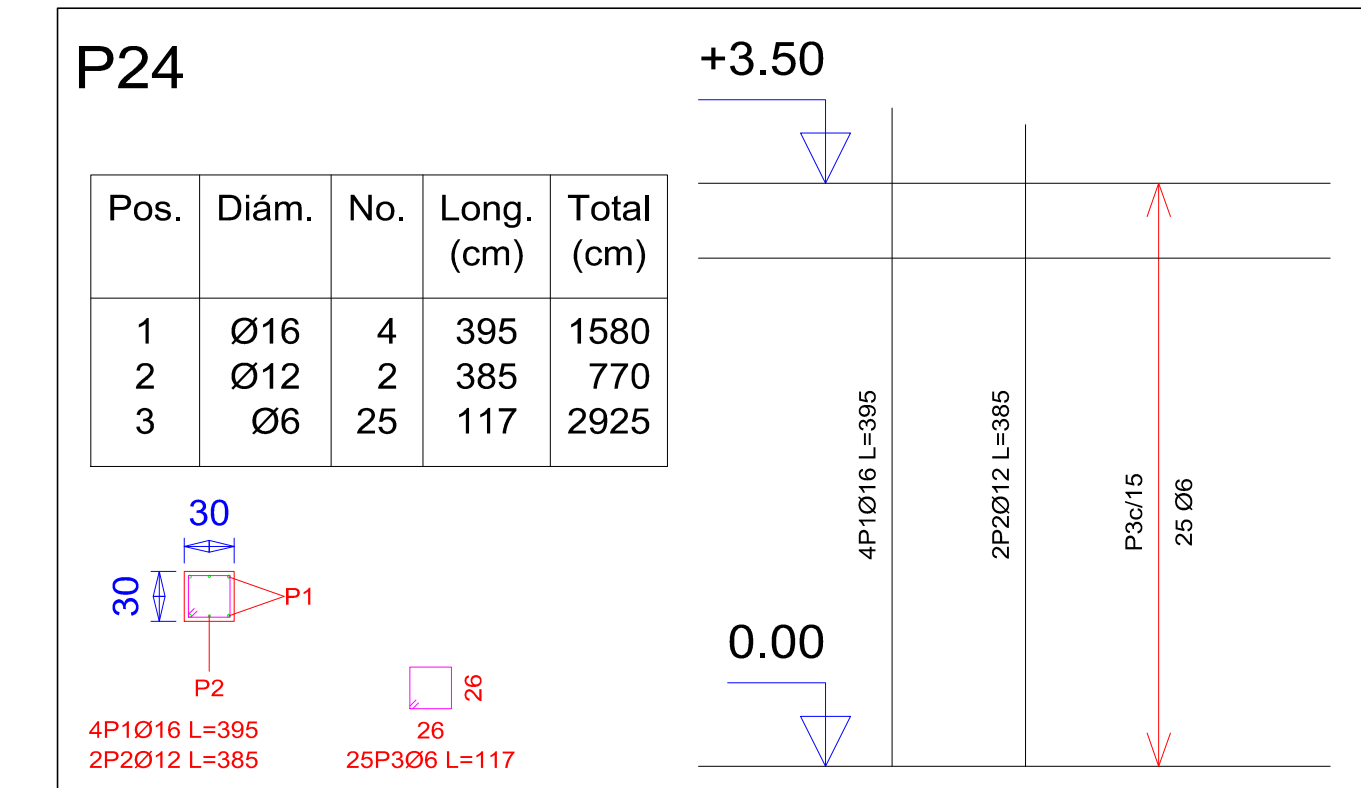
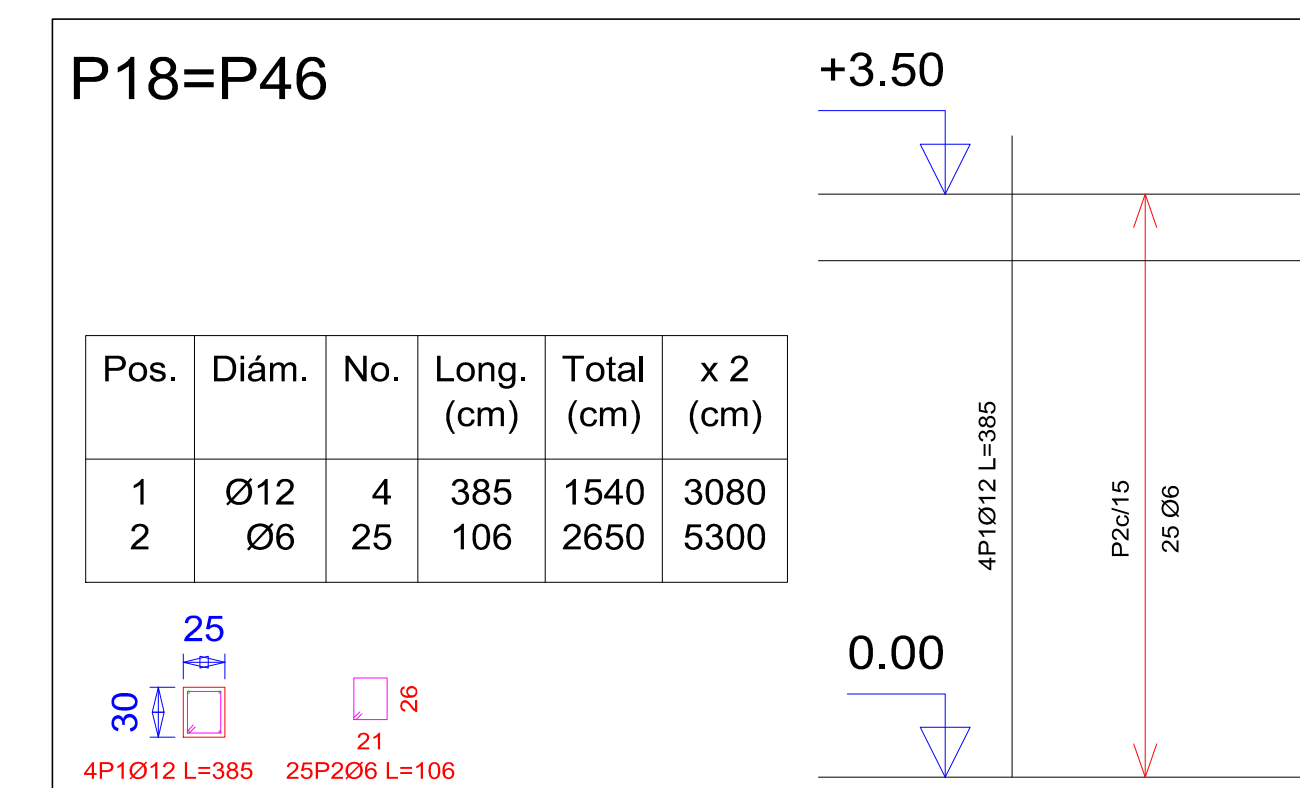
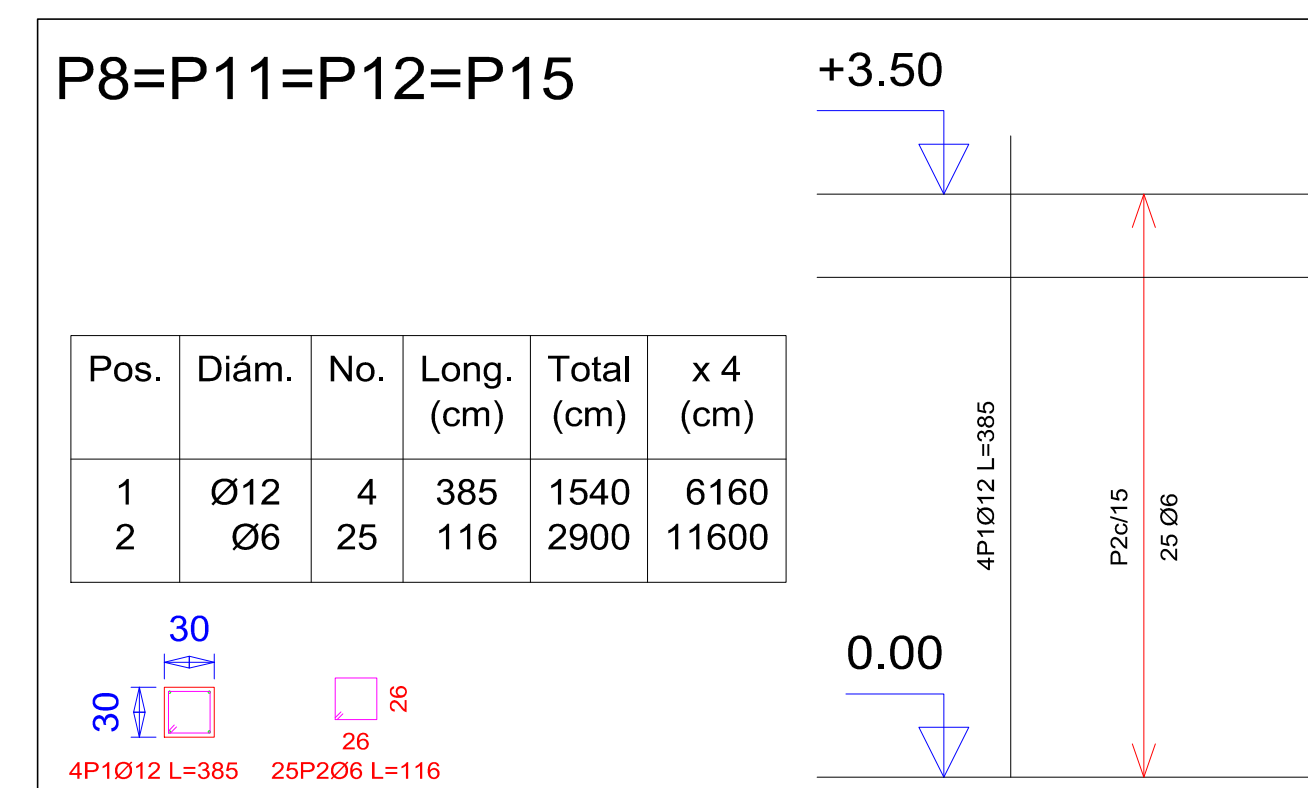
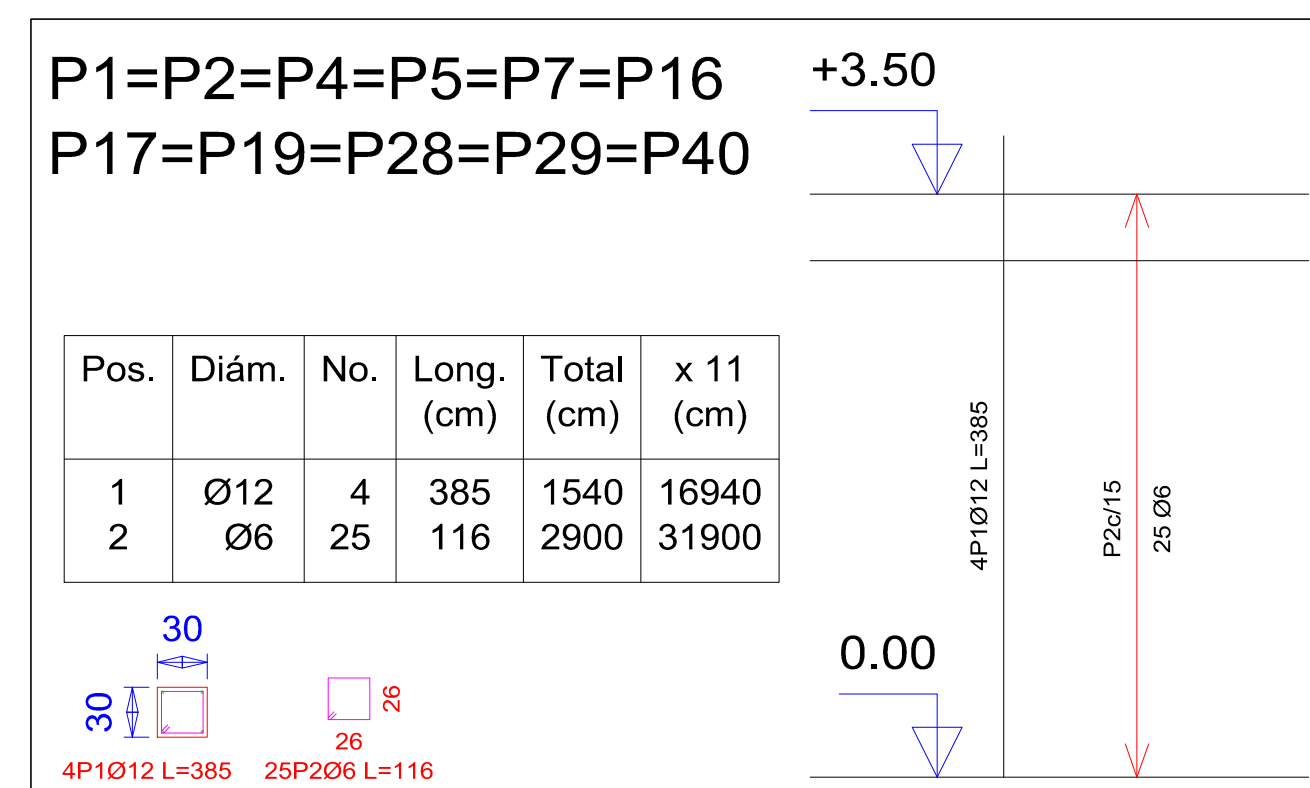


PLANO DE ARMADURA DE COLUMNAS



Pilares que terminan en primer piso
Hormigón: H-25 , Control Normal
Acero: AH-500 , Control Intenso
Escala: 1:50

Resumen Acero primer piso Pilares	Long. total (m)	Peso+10% (kg)	Total
AH-500CI Ø6	1334.9	326	
Ø12	693.0	677	
Ø16	134.3	233	1236



UNIVERSIDAD AUTONOMA JUAN MISAEL SARACHO

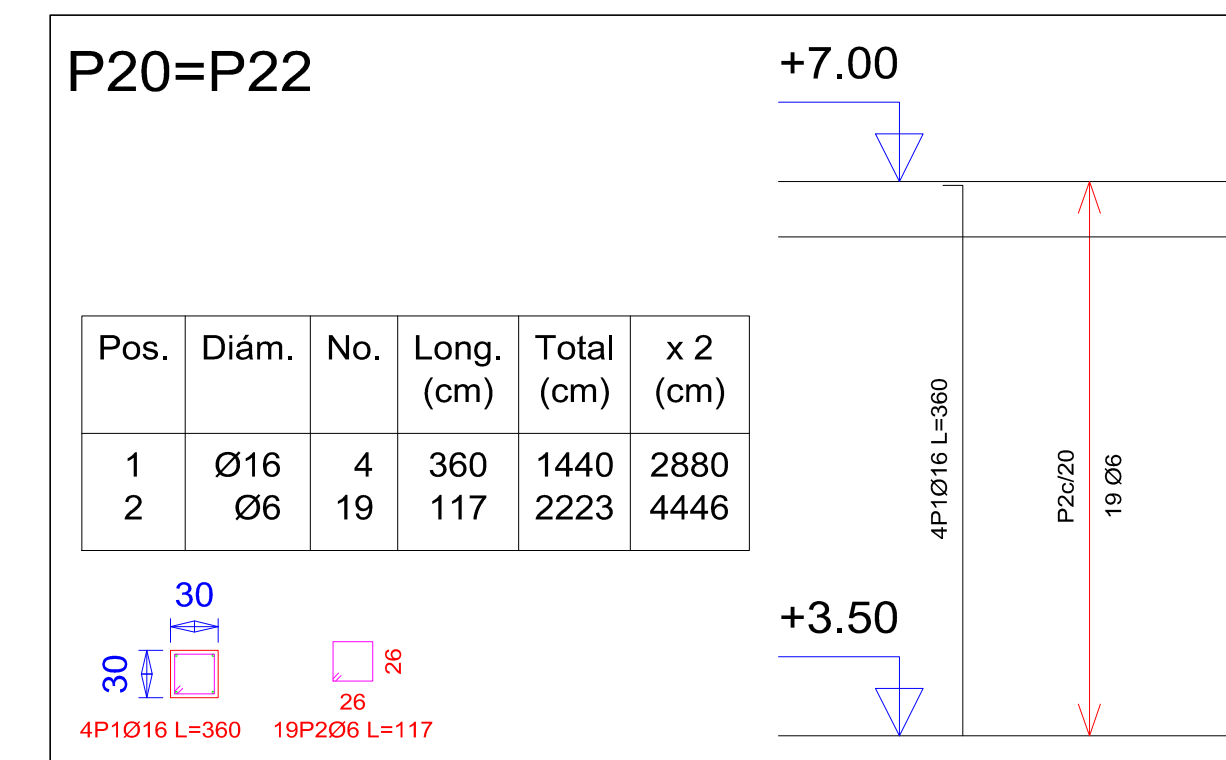
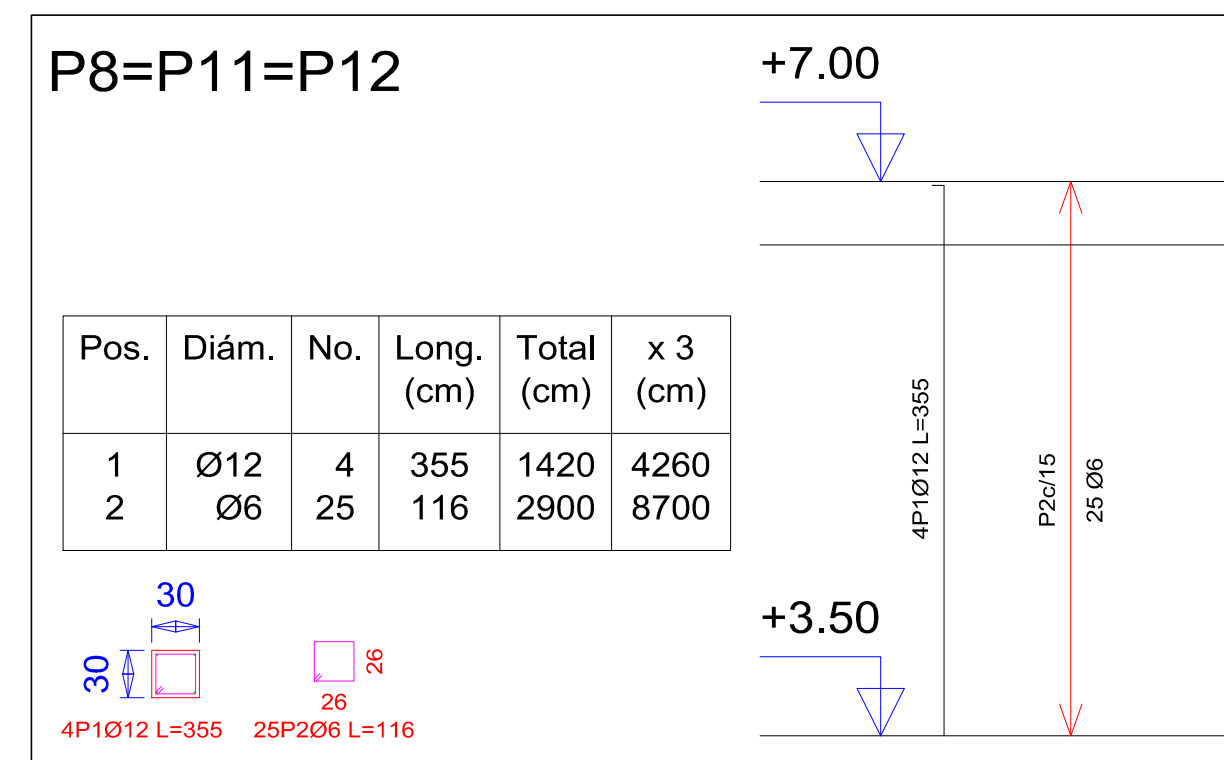
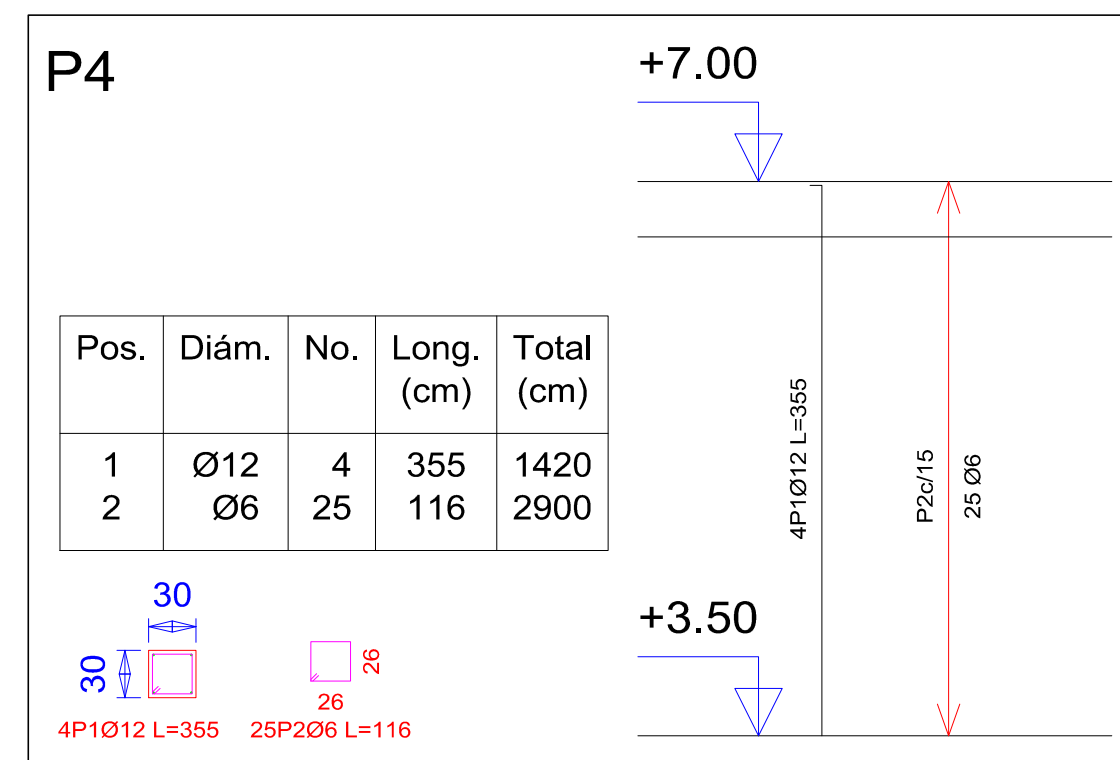
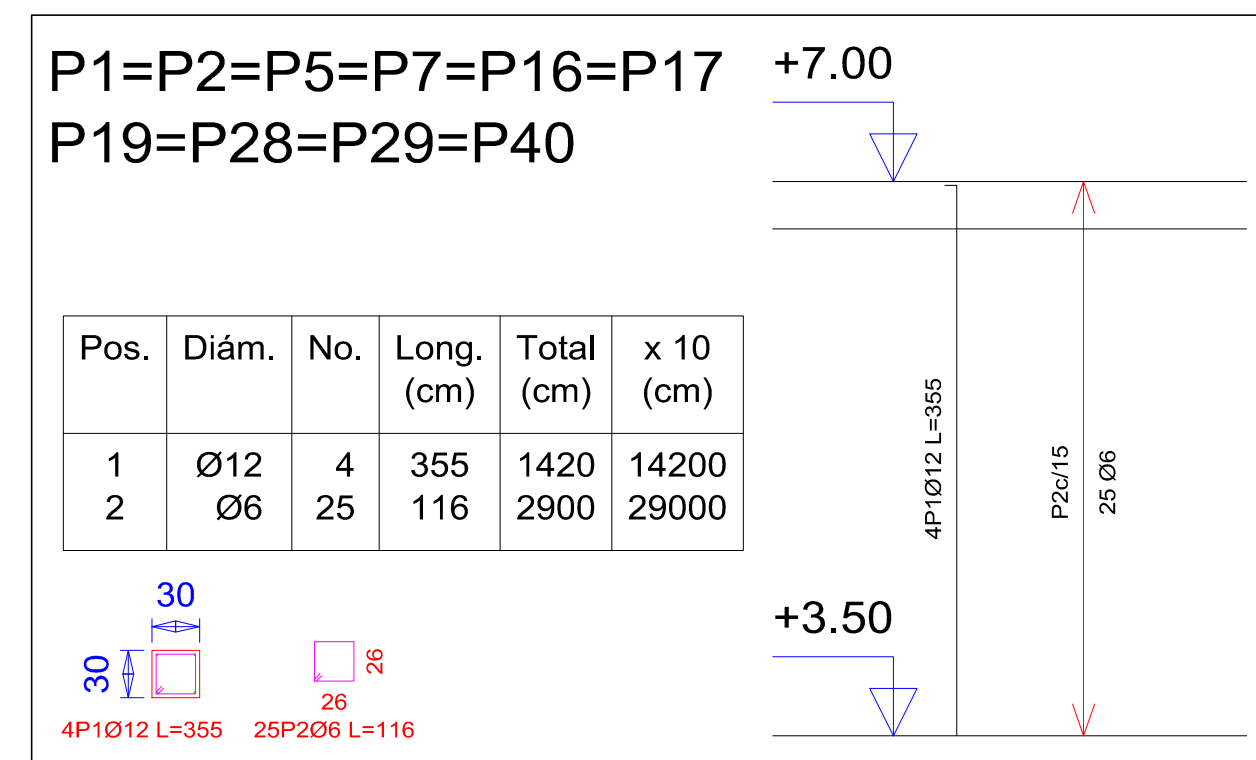
DEPARTAMENTO DE ESTRUCTURAS

MATERIA: CIV-502 Proyecto de grado II

PLANOS DE COLUMNAS-PRIMER PISO

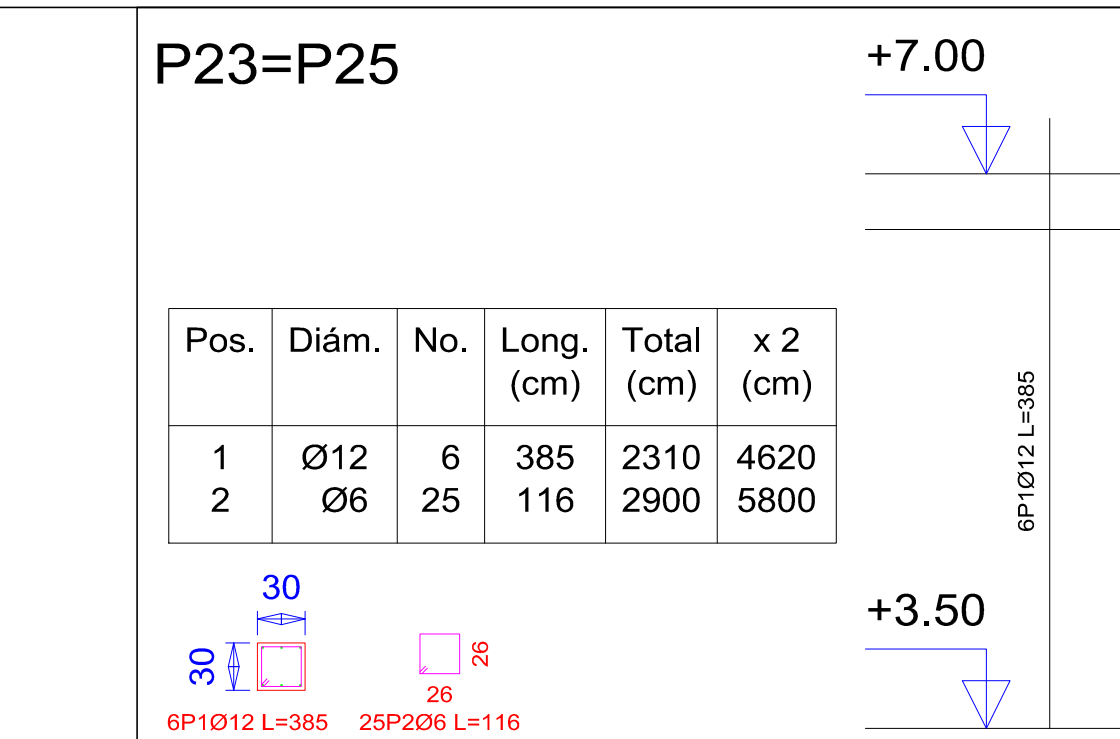
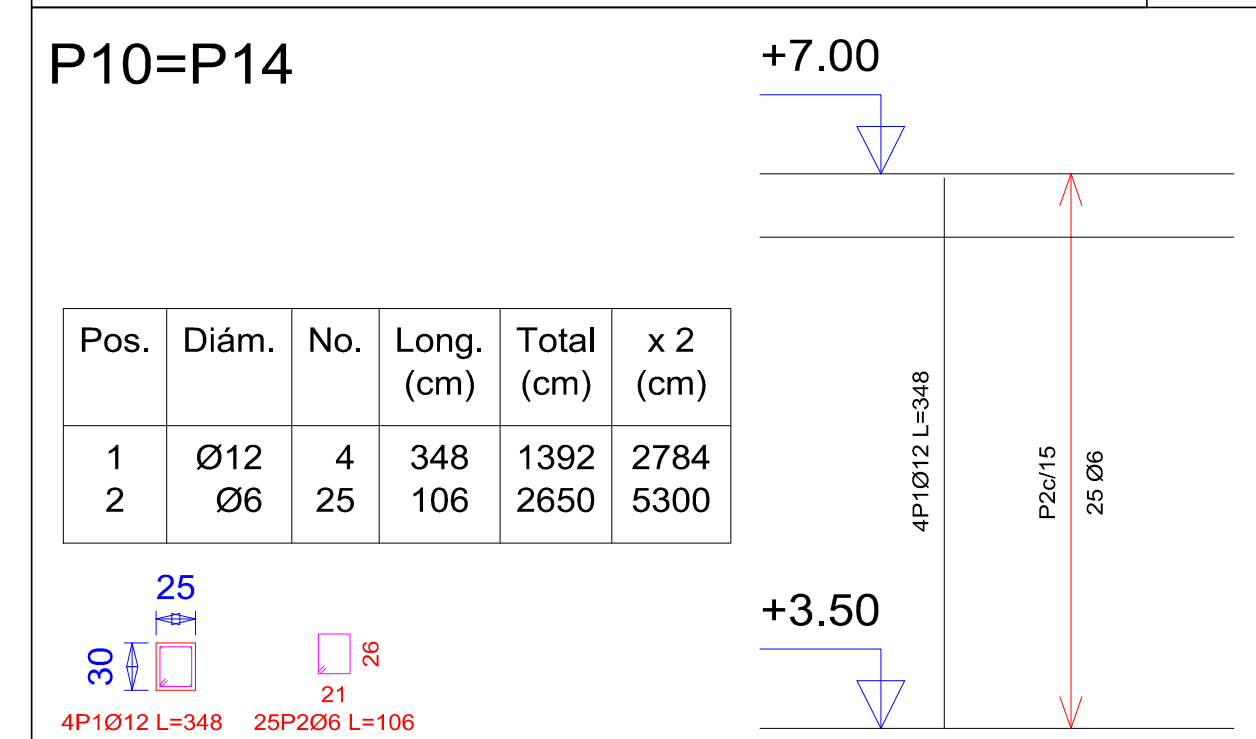
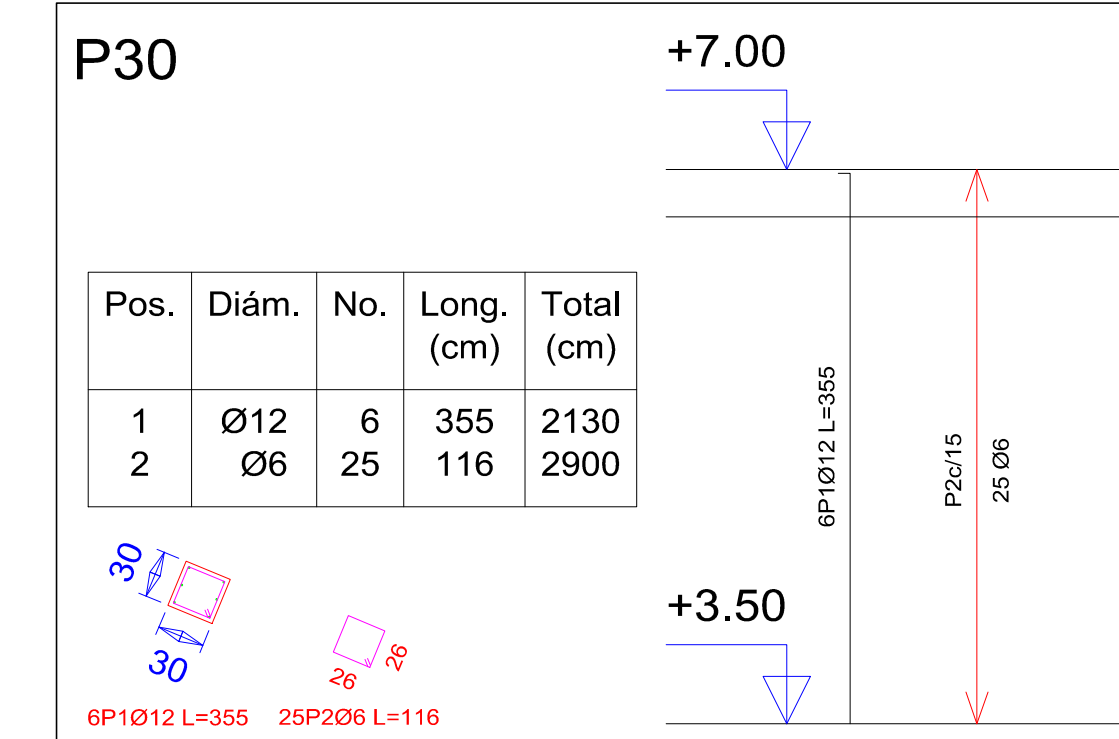
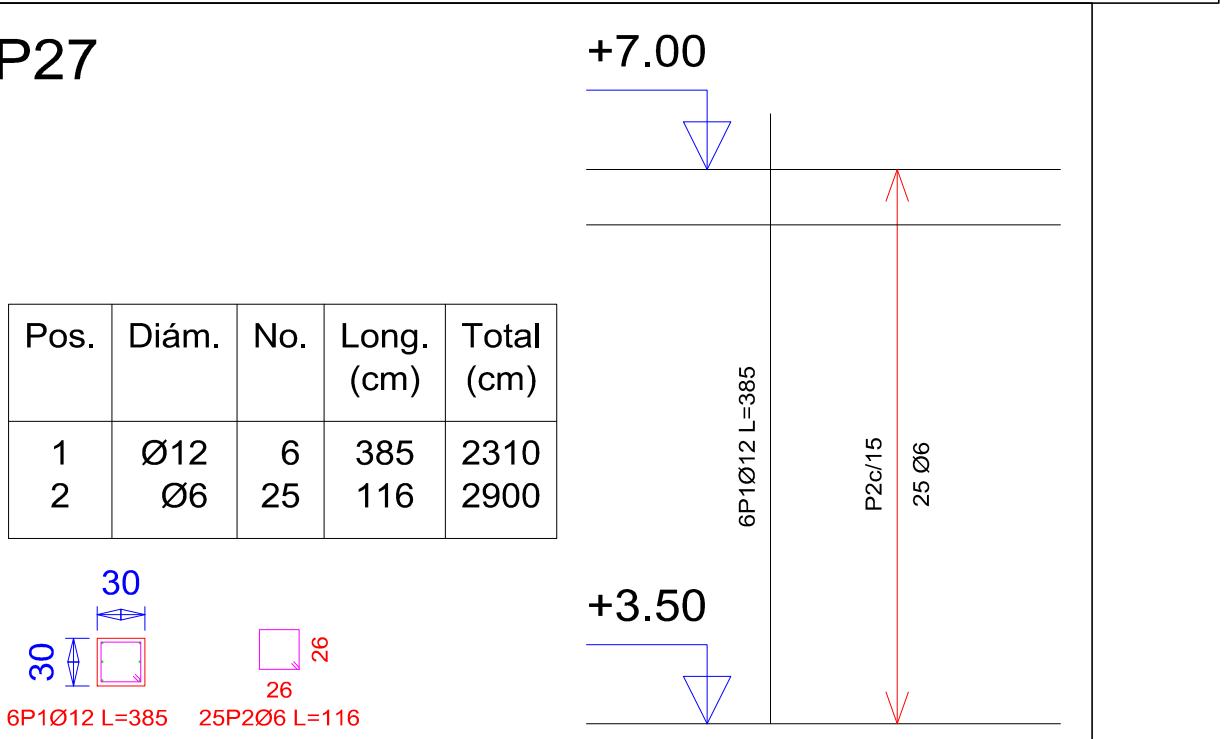
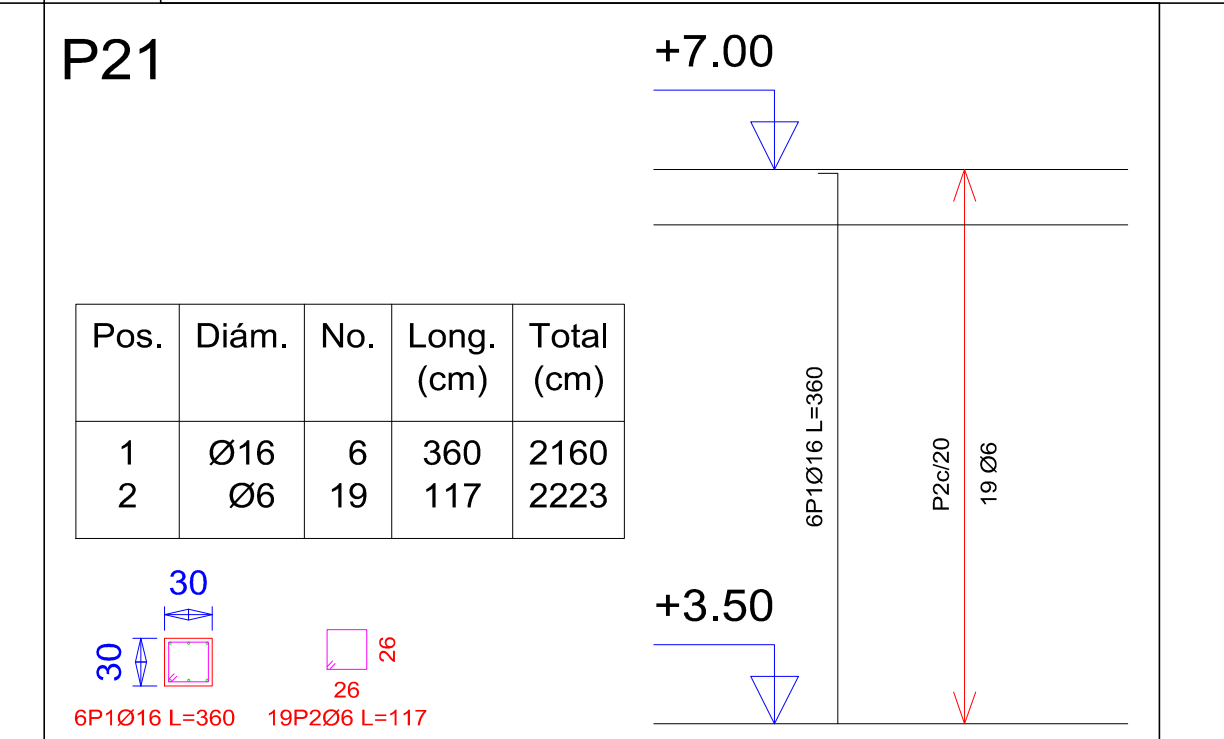
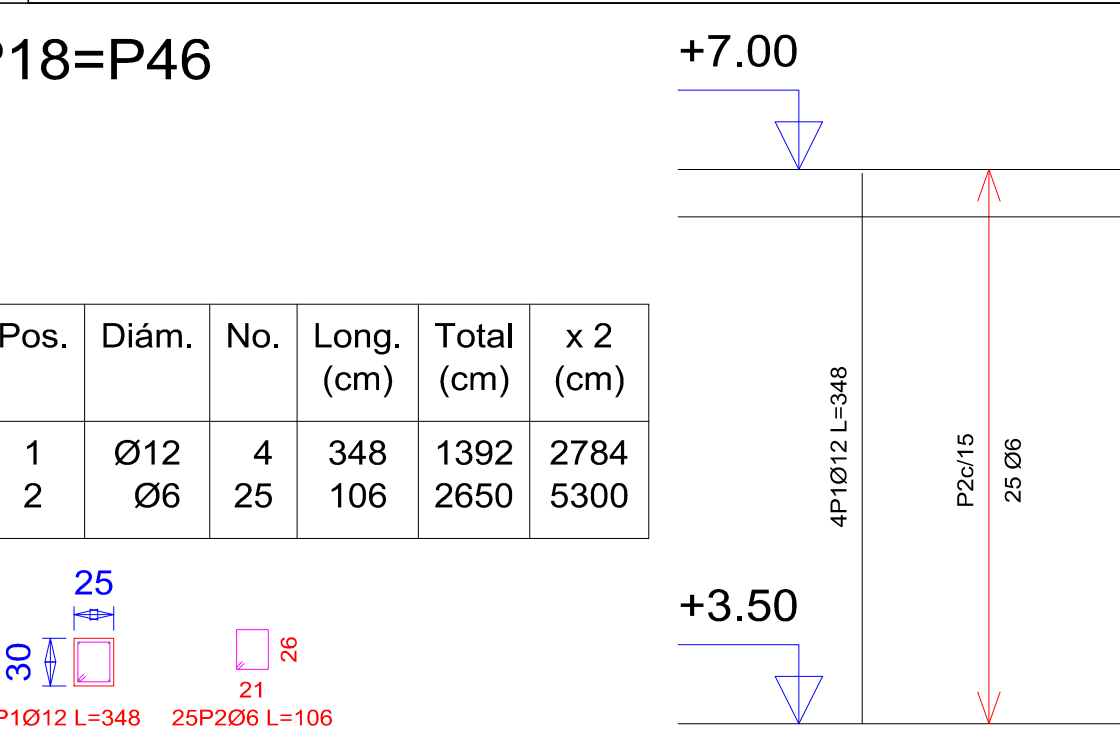
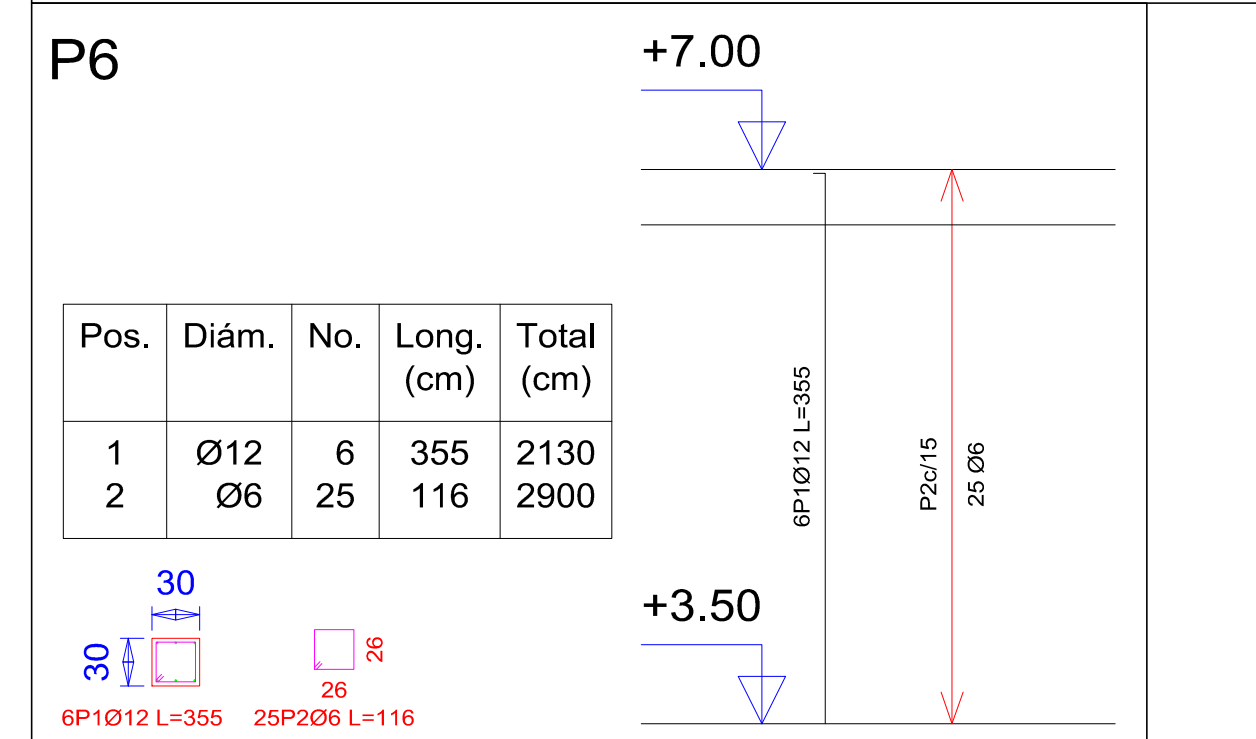
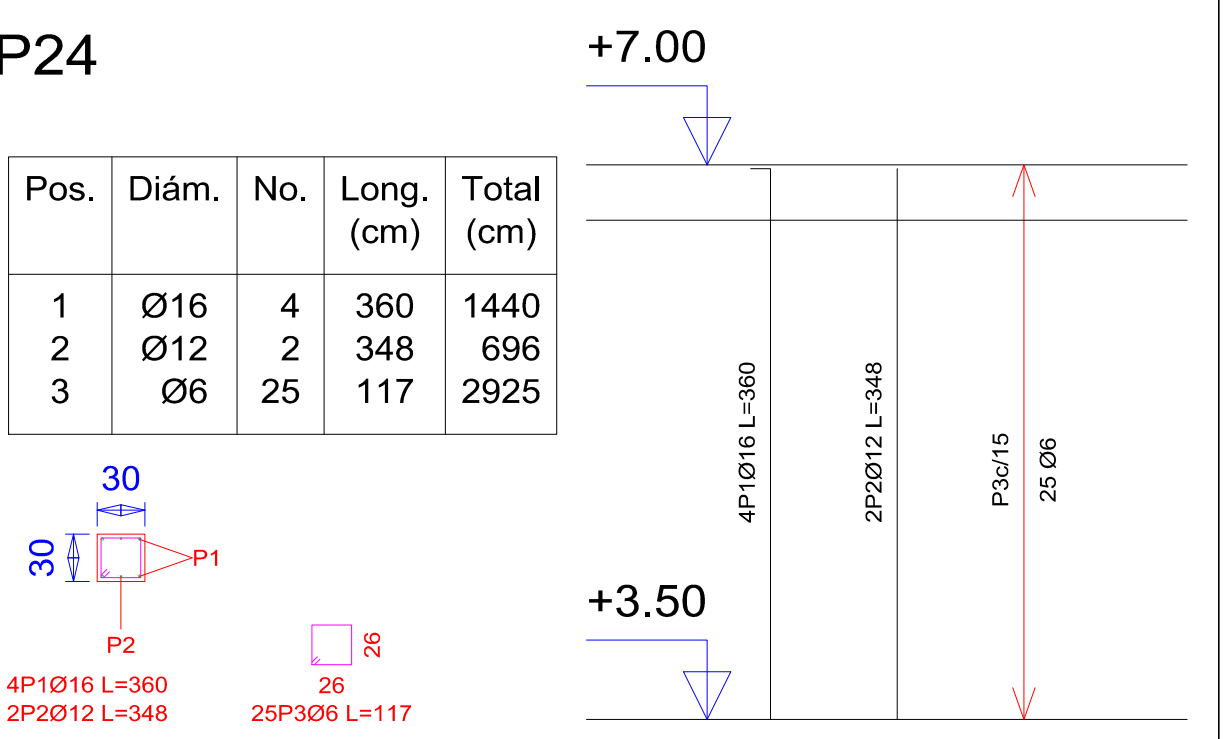
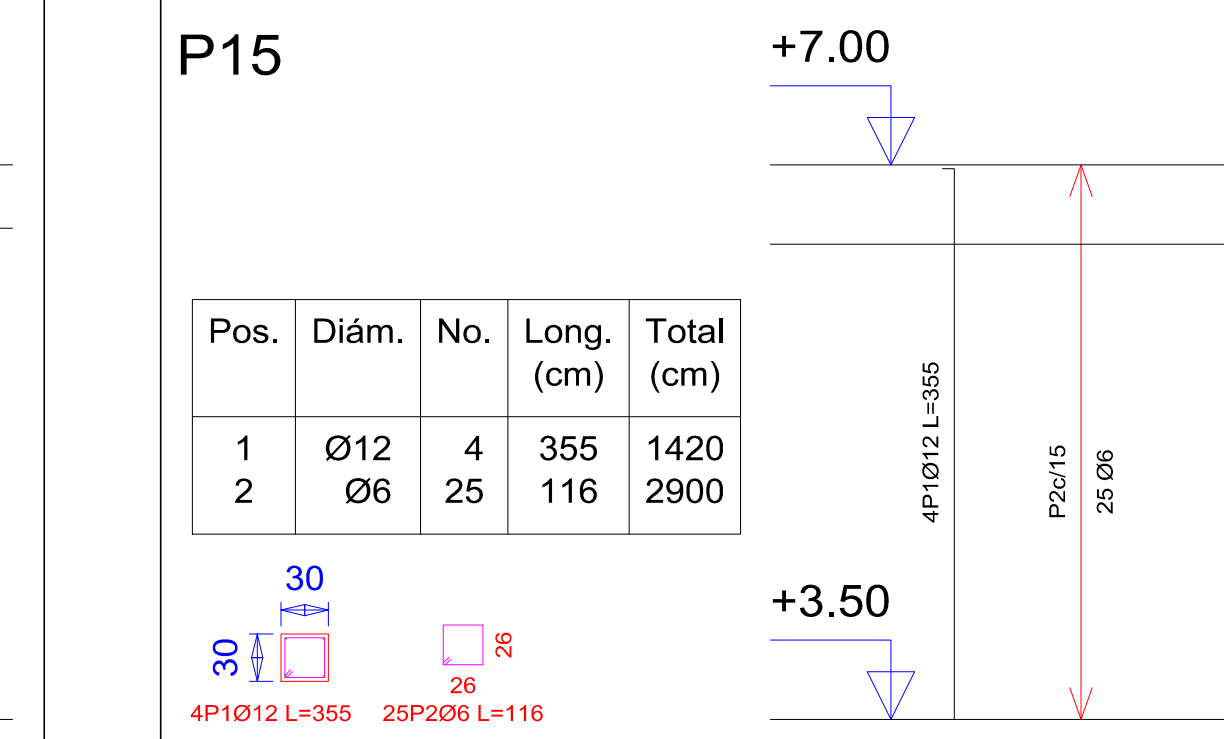
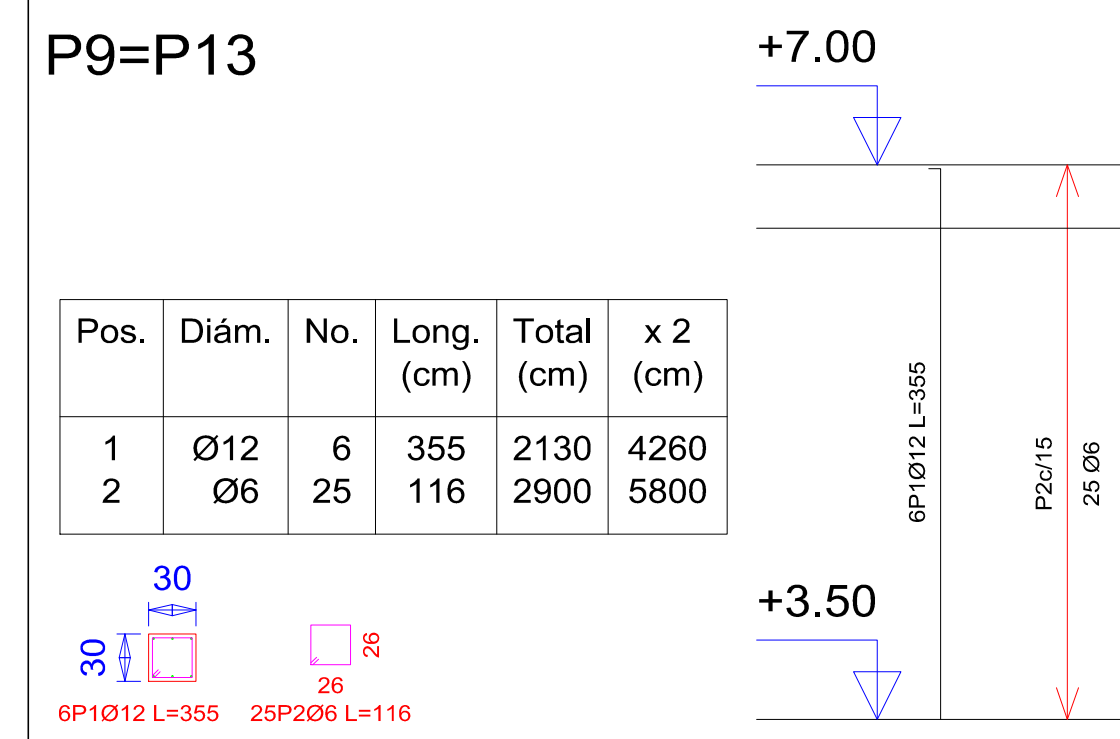
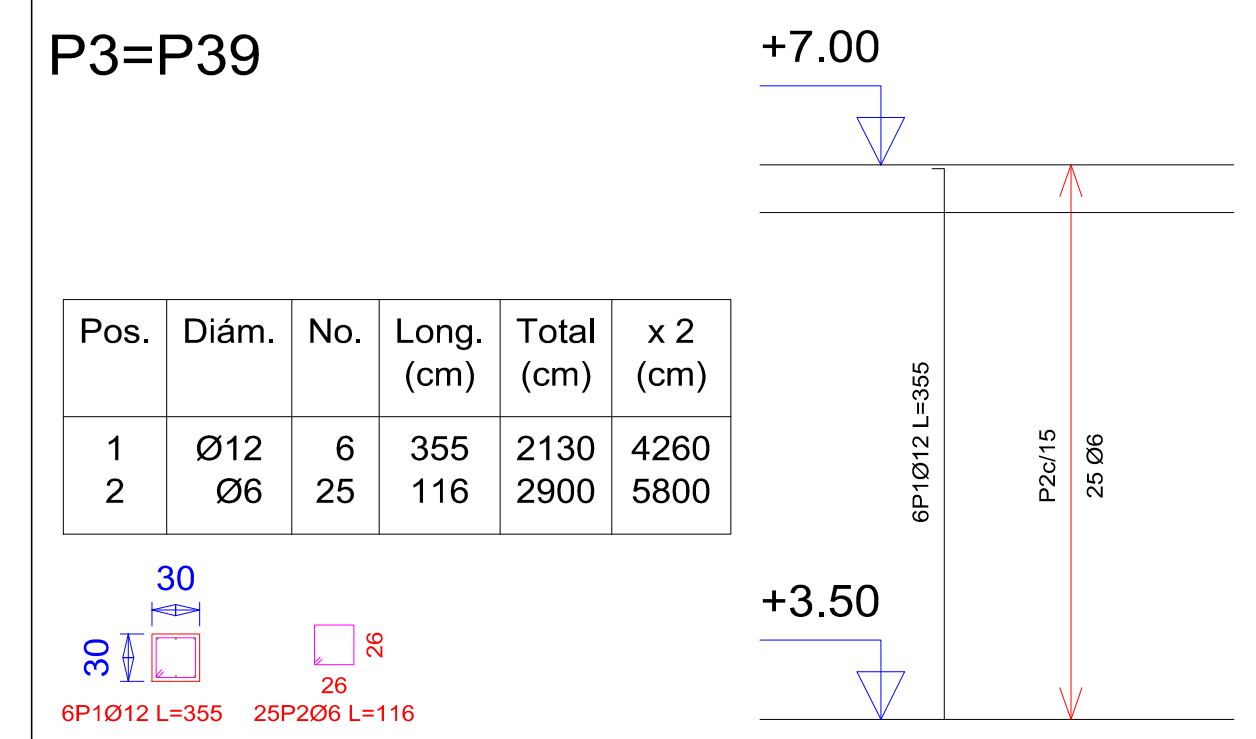
Escalas: 1:50	Estudiante: FABIANA IRAHOLA MURILLO	7/12
	Fecha: Tja, Marzo. 2021	

PLANO DE ARMADURA DE COLUMNAS

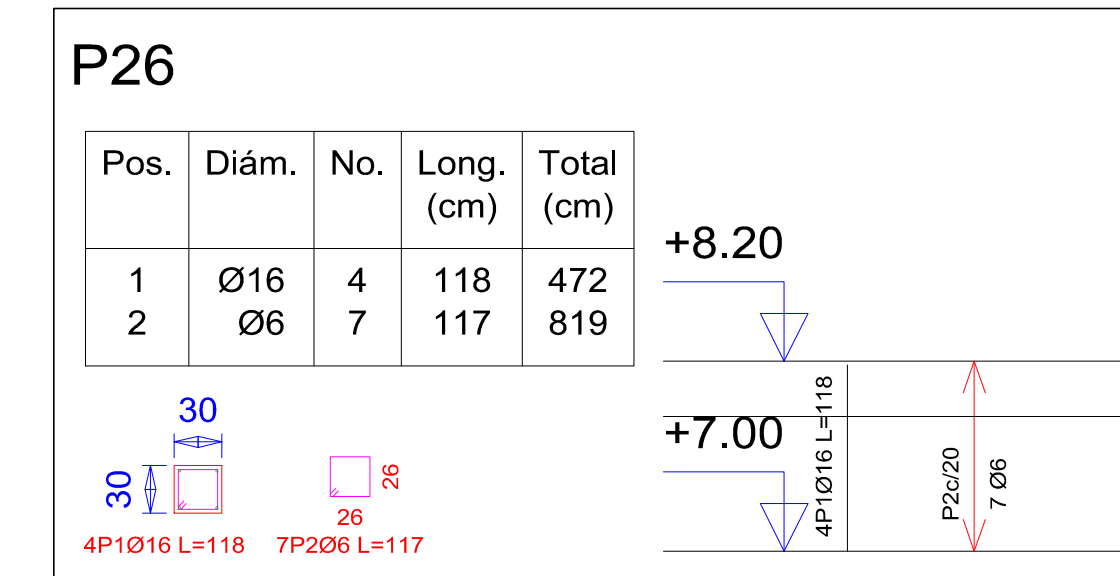
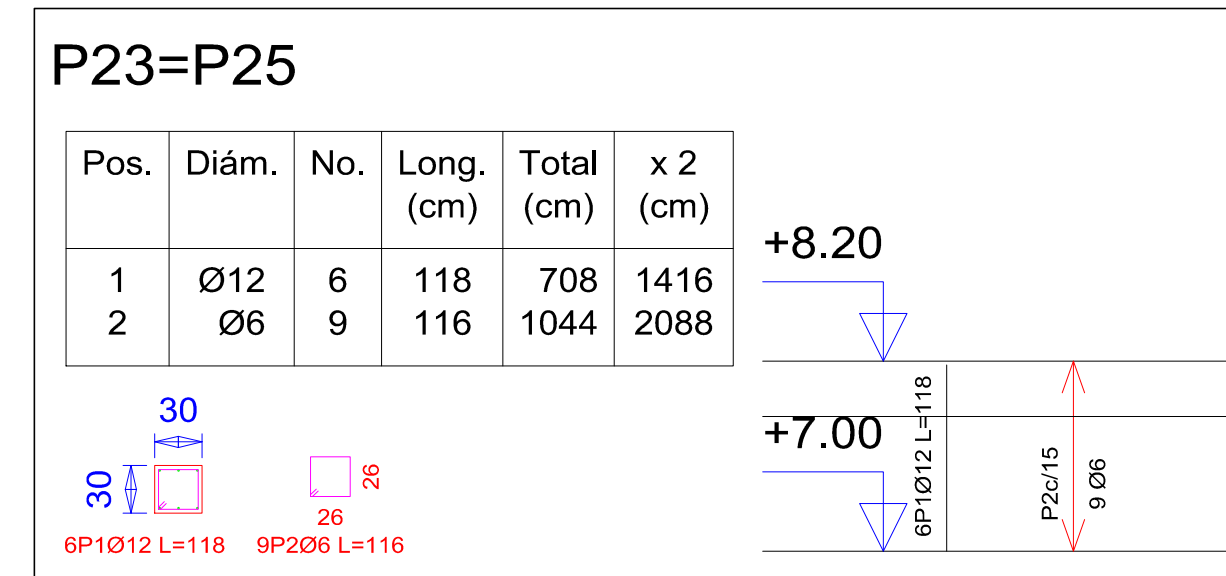


Pilares que terminan en segundo piso
Hormigón: H-25 , Control Normal
Acero: AH-500 , Control Intenso
Escala: 1:50

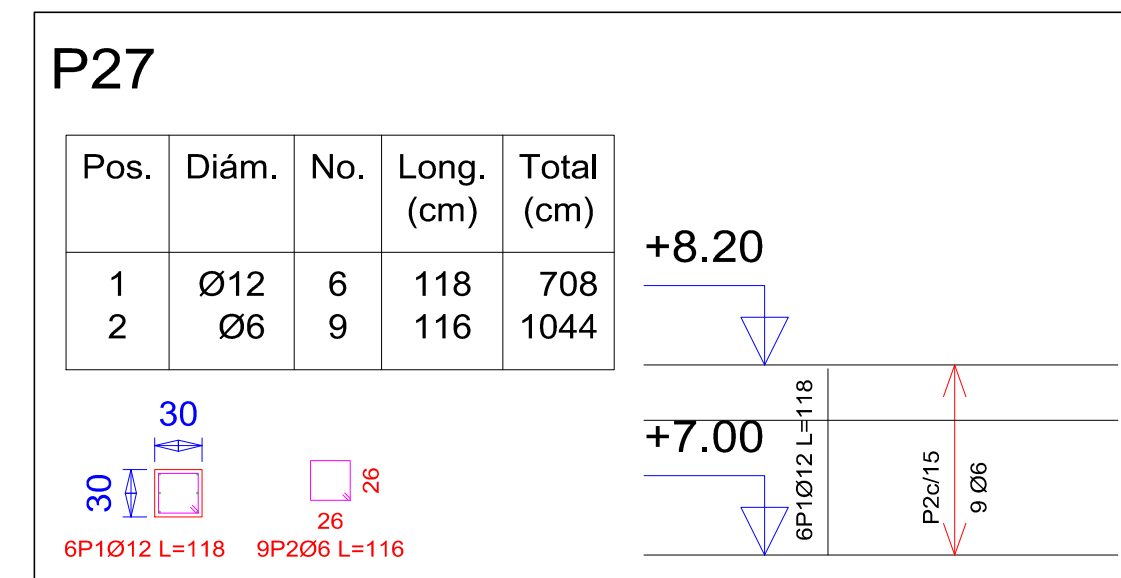
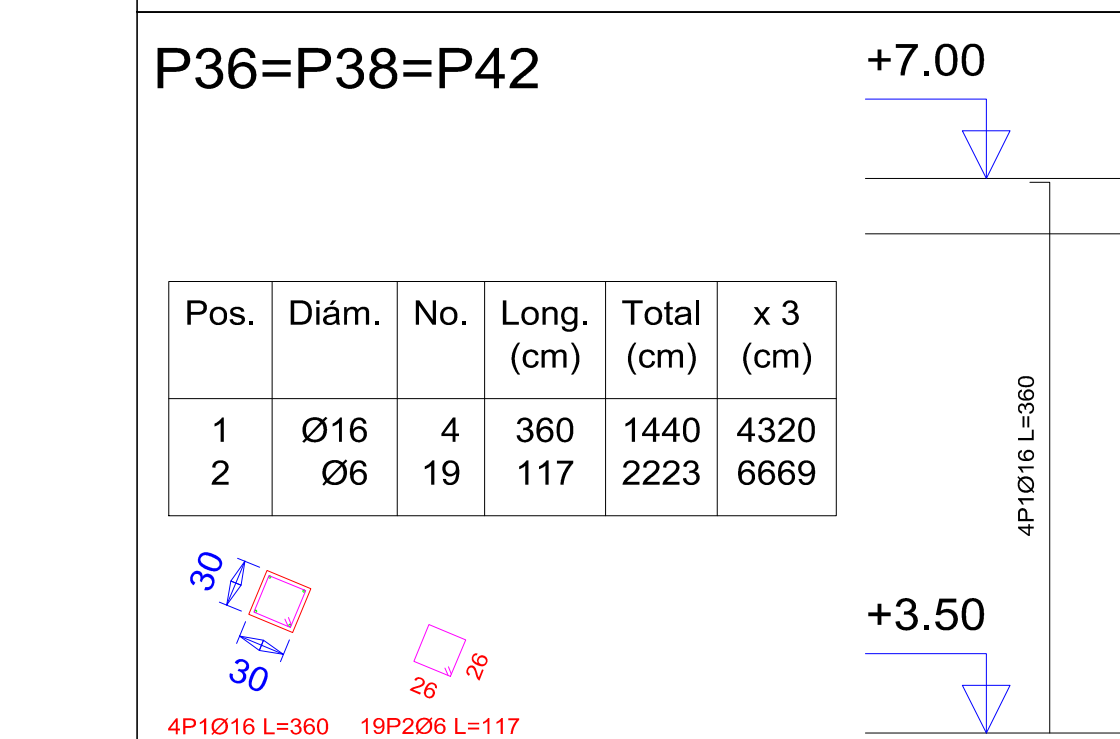
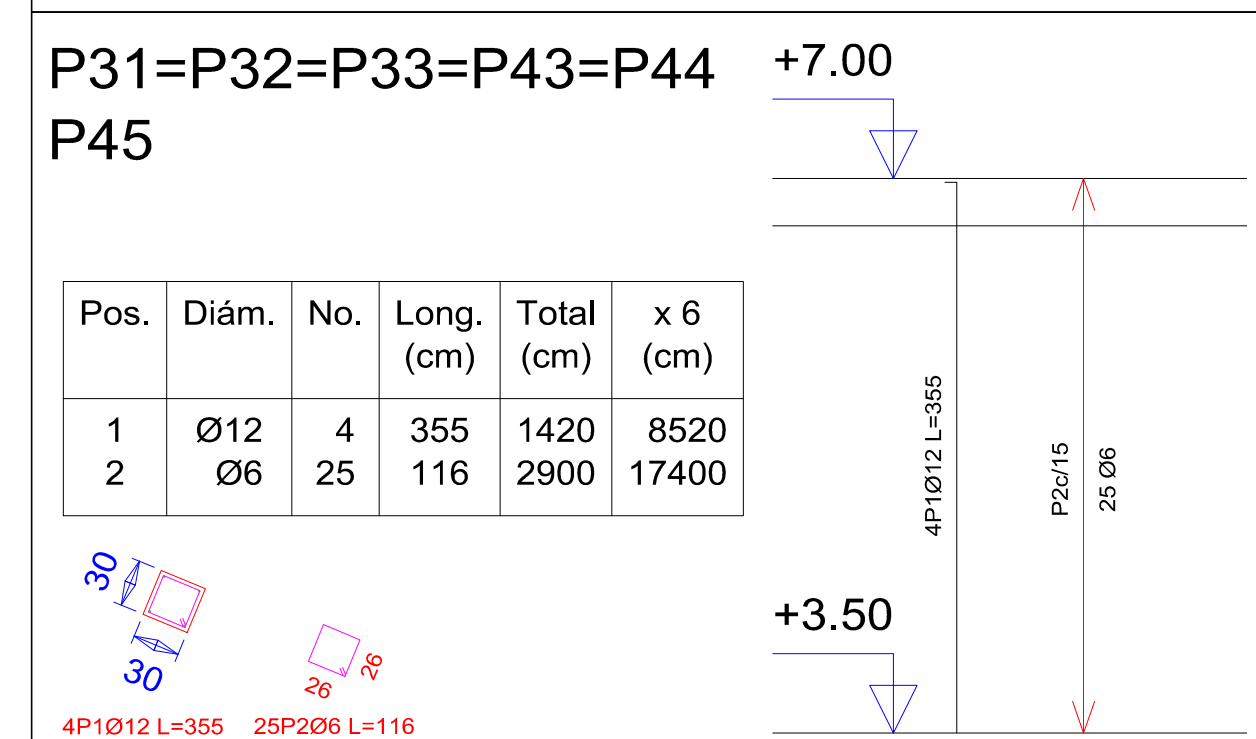
Resumen Acero segundo piso Pilares	Long. total (m)	Peso+10% (kg)	Total
AH-500CI Ø6	1334.9	326	
Ø12	643.1	628	
Ø16	123.8	215	1169



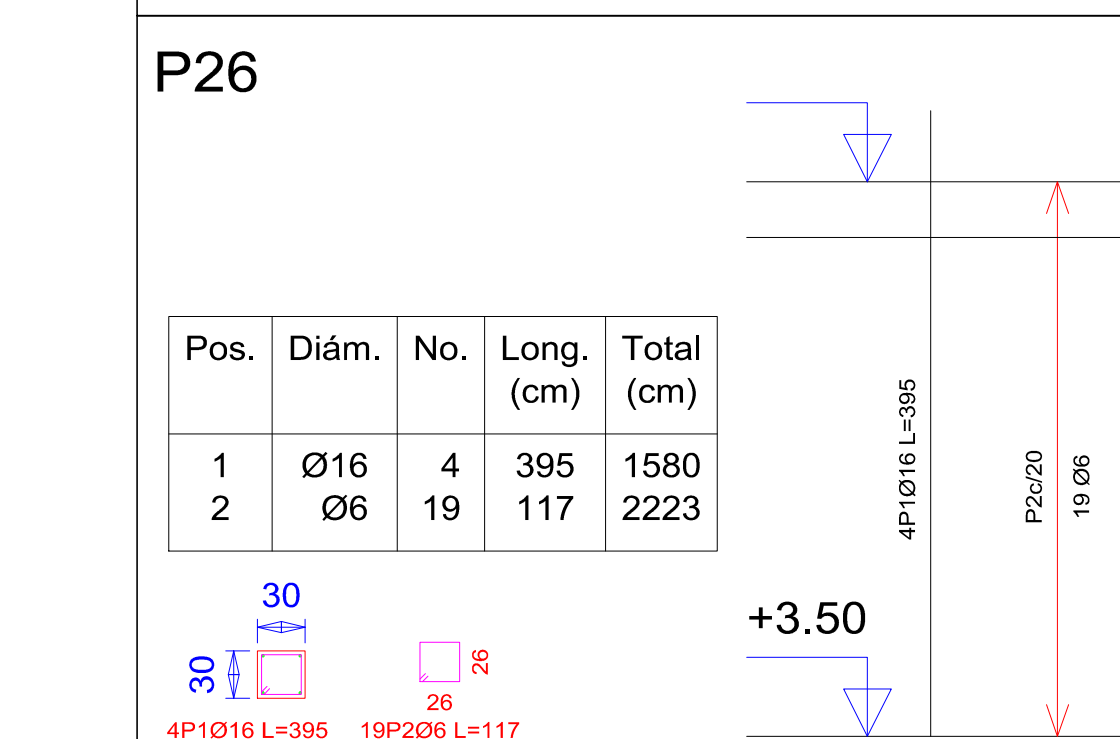
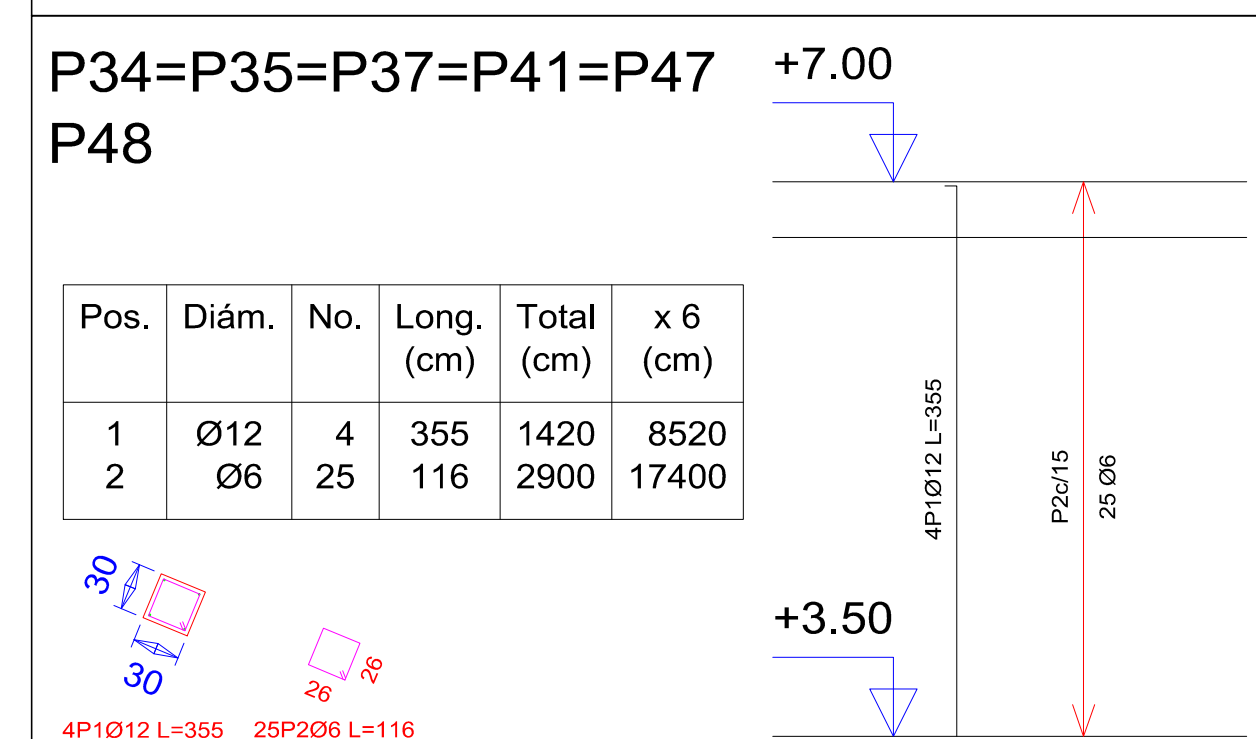
PLANOS DE ARMADURAS DE COLUMNAS QUE TERMINAN EN EL TANQUE



Pilares que terminan en L tanque
Hormigón: H-25 , Control Normal
Acero: AH-500 , Control Intenso
Escala: 1:50



Resumen Acero L tanque Pilares	Long. total (m)	Peso+10% (kg)	Total
AH-500CI Ø6	39.5	10	
Ø12	21.1	21	
Ø16	4.7	8	39



UNIVERSIDAD AUTONOMA JUAN MISAEL SARACHO

DEPARTAMENTO DE ESTRUCTURAS

MATERIA: CIV-502 Proyecto de grado II

PLANOS DE COLUMNAS-SEGUNDO PISO

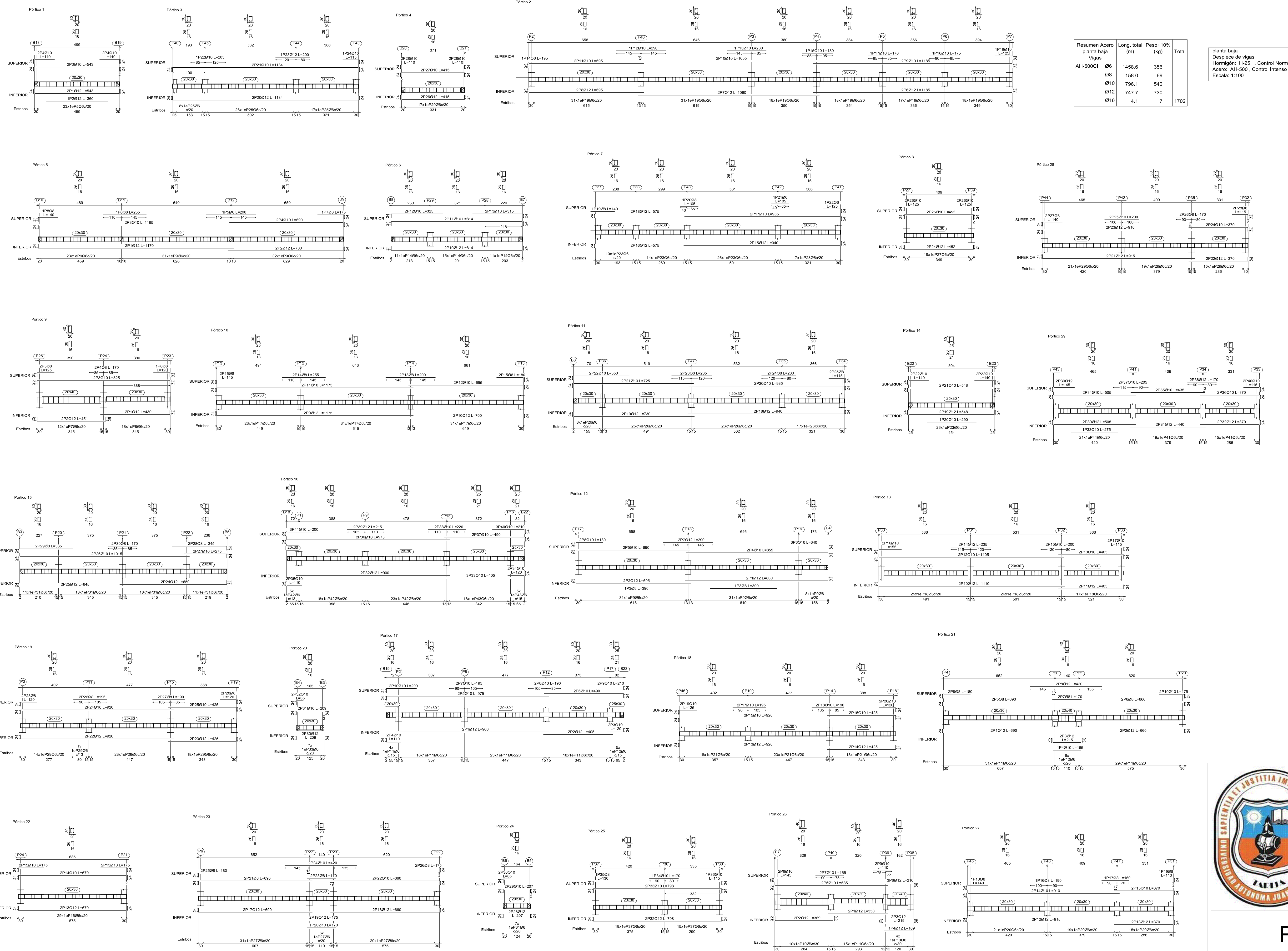
Escalas: 1:50

Estudiante:
FABIANA IRAHOLA MURILLO

8/12

Fecha: Tja, Marzo. 2021

PLANO DE ARMADURA DE VIGAS



Resumen Acero planta baja			
Vigas	Long. Total (m)	Peso +10% (kg)	Total
AH-500C1	66	356	
Ø8	158.0	69	
Ø12	796.1	540	
Ø16	4.1	7	1702

planta baja
Despiece de vigas
Hormigón: H-25 - Control Normal
Acero: AH-500, Control Intenso
Escala: 1:100

Elemento	Pos.	Diam.	No.	Long. (cm)	Total AH-500C1 (kg)
Punto 1	1	Ø12	2	543	9.6
	2	Ø12	2	1086	19.2
	3	Ø10	2	543	9.6
	4	Ø10	2	1086	19.2
	5	Ø8	23	96	228.9
Total: 78.5					
Punto 2	6	Ø12	2	1185	21.2
	7	Ø12	2	2370	42.4
	8	Ø12	2	695	12.3
	9	Ø12	2	1390	24.6
	10	Ø10	2	695	12.3
	11	Ø10	2	1390	24.6
	12	Ø10	20	200	4.8
	13	Ø10	1	180	3.9
	14	Ø10	1	180	3.9
	15	Ø10	1	180	3.9
Total: 106.7					
Punto 3	16	Ø12	2	1134	20.6
	17	Ø12	2	2268	41.2
	18	Ø12	2	3402	61.8
	19	Ø12	2	3402	61.8
	20	Ø8	51	96	228.9
Total: 192.3					
Punto 4	21	Ø12	2	415	7.4
	22	Ø12	2	830	14.8
	23	Ø10	4	150	3.2
	24	Ø10	4	300	6.4
	25	Ø8	17	96	228.9
Total: 39.7					
Punto 5	26	Ø12	2	1130	20.6
	27	Ø12	2	2260	41.2
	28	Ø12	2	700	12.6
	29	Ø12	2	1400	25.2
	30	Ø10	2	700	12.6
Total: 105.8					
Punto 6	31	Ø12	2	814	14.5
	32	Ø12	2	1628	29.0
	33	Ø10	2	325	5.9
	34	Ø10	2	650	11.8
	35	Ø8	37	96	228.9
Total: 86.7					
Punto 7	36	Ø12	2	940	17.0
	37	Ø12	2	1880	34.0
	38	Ø12	2	940	17.0
	39	Ø12	2	1880	34.0
	40	Ø8	1	125	2.8
Total: 104.8					
Punto 8	41	Ø12	2	425	7.7
	42	Ø12	2	850	15.4
	43	Ø10	2	345	6.2
	44	Ø10	2	690	12.4
	45	Ø8	18	96	228.9
Total: 52.6					
Punto 9	46	Ø12	2	430	7.8
	47	Ø12	2	860	15.6
	48	Ø10	2	370	6.6
	49	Ø10	2	740	13.2
	50	Ø8	1	125	2.8
Total: 35.8					
Punto 10	51	Ø12	2	455	8.2
	52	Ø12	2	910	16.4
	53	Ø10	2	455	8.2
	54	Ø10	2	910	16.4
	55	Ø8	1	125	2.8
Total: 34.0					
Punto 11	56	Ø12	2	430	7.8
	57	Ø12	2	860	15.6
	58	Ø10	2	430	7.8
	59	Ø10	2	860	15.6
	60	Ø8	1	125	2.8
Total: 39.6					
Punto 12	61	Ø12	2	455	8.2
	62	Ø12	2	910	16.4
	63	Ø10	2	455	8.2
	64	Ø10	2	910	16.4
	65	Ø8	1	125	2.8
Total: 34.0					
Punto 13	66	Ø12	2	430	7.8
	67	Ø12	2	860	15.6
	68	Ø10	2	430	7.8
	69	Ø10	2	860	15.6
	70	Ø8	1	125	2.8
Total: 39.6					
Punto 14	71	Ø12	2	455	8.2
	72	Ø12	2	910	16.4
	73	Ø10	2	455	8.2
	74	Ø10	2	910	16.4
	75	Ø8	1	125	2.8
Total: 34.0					
Punto 15	76	Ø12	2	430	7.8
	77	Ø12	2	860	15.6
	78	Ø10	2	430	7.8
	79	Ø10	2	860	15.6
	80	Ø8	1	125	2.8
Total: 39.6					
Punto 16	81	Ø12	2	455	8.2
	82	Ø12	2	910	16.4
	83	Ø10	2	455	8.2
	84	Ø10	2	910	16.4
	85	Ø8	1	125	2.8
Total: 34.0					
Punto 17	86	Ø12	2	430	7.8
	87	Ø12	2	860	15.6
	88	Ø10	2	430	7.8
	89	Ø10	2	860	15.6
	90	Ø8	1	125	2.8
Total: 39.6					
Punto 18	91	Ø12	2	455	8.2
	92	Ø12	2	910	16.4
	93	Ø10	2	455	8.2
	94	Ø10	2	910	16.4
	95	Ø8	1	125	2.8
Total: 34.0					
Punto 19	96	Ø12	2	430	7.8
	97	Ø12	2	860	15.6
	98	Ø10	2	430	7.8
	99	Ø10	2	860	15.6
	100	Ø8	1	125	2.8
Total: 39.6					
Punto 20	101	Ø12	2	455	8.2
	102	Ø12	2	910	16.4
	103	Ø10	2	455	8.2
	104	Ø10	2	910	16.4
	105	Ø8	1	125	2.8
Total: 34.0					
Punto 21	106	Ø12	2	430	7.8
	107	Ø12	2	860	15.6
	108	Ø10	2	430	7.8
	109	Ø10	2	860	15.6
	110	Ø8	1	125	2.8
Total: 39.6					
Punto 22	111	Ø12	2	455	8.2
	112	Ø12	2	910	16.4
	113	Ø10	2	455	8.2
	114	Ø10	2	910	16.4
	115	Ø8	1	125	2.8
Total: 34.0					
Punto 23	116	Ø12	2	430	7.8
	117	Ø12	2	860	15.6
	118	Ø10	2	430	7.8
	119	Ø10	2	860	15.6
	120	Ø8	1	125	2.8
Total: 39.6					
Punto 24	121	Ø12	2	455	8.2
	122	Ø12	2	910	16.4
	123	Ø10	2	455	8.2
	124	Ø10	2	910	16.4
	125	Ø8	1	125	2.8
Total: 34.0					
Punto 25	126	Ø12	2	430	7.8
	127	Ø12	2	860	15.6
	128	Ø10	2	430	7.8
	129	Ø10	2	860	15.6
	130	Ø8	1	125	2.8
Total: 39.6					
Punto 26	131	Ø12	2	455	8.2
	132	Ø12	2	910	16.4
	133	Ø10	2	455	8.2
	134	Ø10	2	910	16.4
	135	Ø8	1	125	2.8
Total: 34.0					



UNIVERSIDAD AUTÓNOMA JUAN MISAE SARACHO

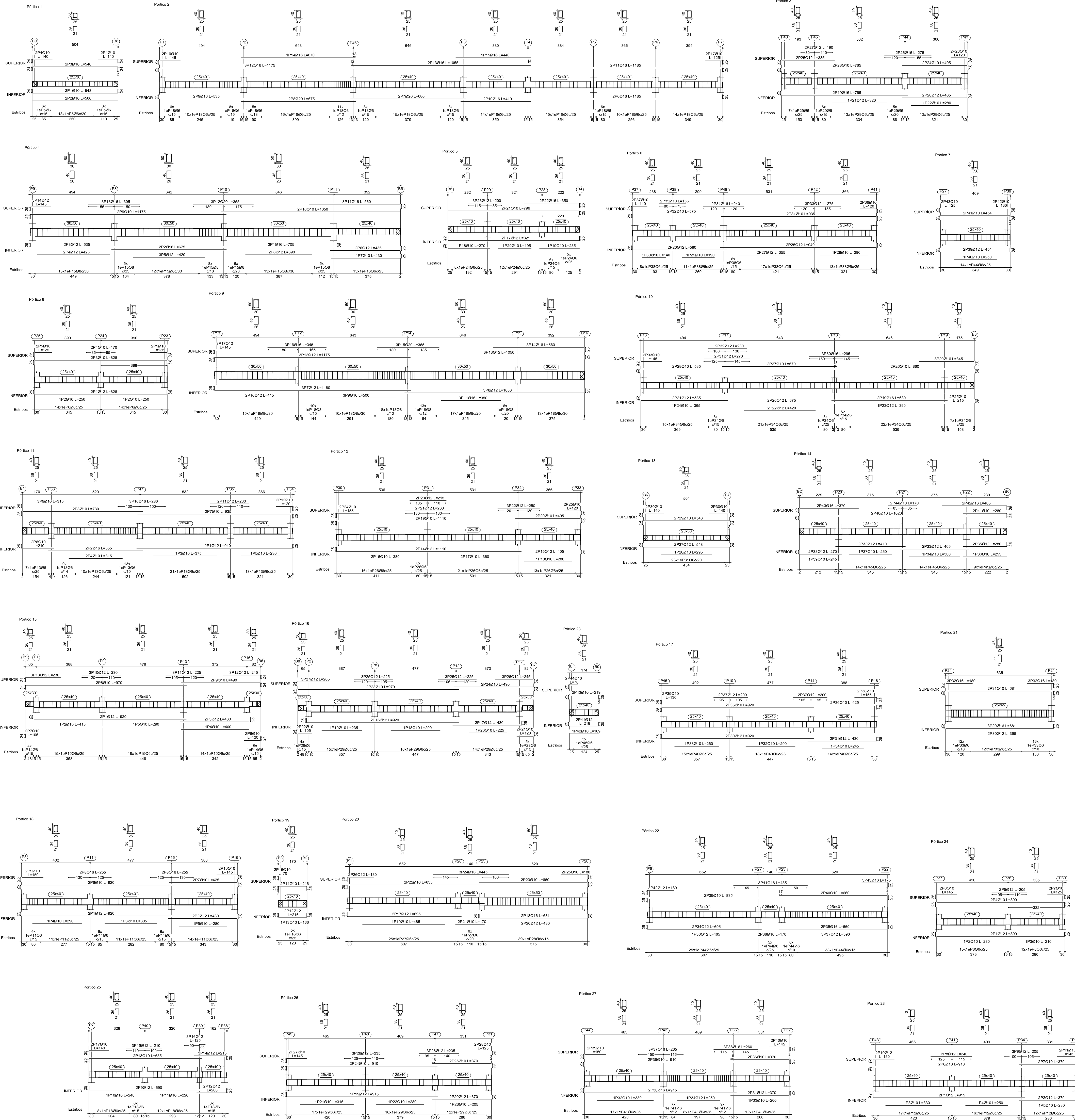
DEPARTAMENTO DE ESTRUCTURAS

MATERIA: CIV-502 Proyecto de grado II

PLANO DE VIGAS- PLANTA BAJA

Estudiante: FABIANA IRAHOLA MURILLO	9/12
Escalas: 1:100	Fecha: Tja, Marzo 2022

PLANO DE ARMADURA DE VIGAS



primer piso
 Diseño de vigas
 Hormigon: H-25 Control Normal
 Acero: AH-500 Control Interno
 Escala: 1:100

Resumen Acero primer piso Vigas	Ø6	Ø8	Ø10	Ø16	Ø20	Long. total (cm)	Peso+10% (kg)	Total
	1507.4	324.1	877.4	857	46.7	1507.4	368	2952

Elemento	Pos.	Diám.	No.	Long. (cm)	Total AH-500CI (cm)	(kg)
Planta 1	1	Ø10	2	560	1120	6.2
	2	Ø10	2	560	1120	6.2
	3	Ø10	2	560	1120	6.2
	4	Ø10	2	560	1120	6.2
Total						24.8

Elemento	Pos.	Diám.	No.	Long. (cm)	Total AH-500CI (cm)	(kg)
Planta 2	1	Ø10	2	560	1120	6.2
	2	Ø10	2	560	1120	6.2
	3	Ø10	2	560	1120	6.2
	4	Ø10	2	560	1120	6.2
	5	Ø10	2	560	1120	6.2
	6	Ø10	2	560	1120	6.2
	7	Ø10	2	560	1120	6.2
	8	Ø10	2	560	1120	6.2
	9	Ø10	2	560	1120	6.2
	10	Ø10	2	560	1120	6.2
	11	Ø10	2	560	1120	6.2
	12	Ø10	2	560	1120	6.2
Total						75.6

Elemento	Pos.	Diám.	No.	Long. (cm)	Total AH-500CI (cm)	(kg)
Planta 3	1	Ø10	2	560	1120	6.2
	2	Ø10	2	560	1120	6.2
	3	Ø10	2	560	1120	6.2
	4	Ø10	2	560	1120	6.2
	5	Ø10	2	560	1120	6.2
	6	Ø10	2	560	1120	6.2
	7	Ø10	2	560	1120	6.2
	8	Ø10	2	560	1120	6.2
	9	Ø10	2	560	1120	6.2
	10	Ø10	2	560	1120	6.2
	11	Ø10	2	560	1120	6.2
	12	Ø10	2	560	1120	6.2
Total						75.6

Elemento	Pos.	Diám.	No.	Long. (cm)	Total AH-500CI (cm)	(kg)
Planta 4	1	Ø10	2	560	1120	6.2
	2	Ø10	2	560	1120	6.2
	3	Ø10	2	560	1120	6.2
	4	Ø10	2	560	1120	6.2
	5	Ø10	2	560	1120	6.2
	6	Ø10	2	560	1120	6.2
	7	Ø10	2	560	1120	6.2
	8	Ø10	2	560	1120	6.2
	9	Ø10	2	560	1120	6.2
	10	Ø10	2	560	1120	6.2
	11	Ø10	2	560	1120	6.2
	12	Ø10	2	560	1120	6.2
Total						75.6

Elemento	Pos.	Diám.	No.	Long. (cm)	Total AH-500CI (cm)	(kg)
Planta 5	1	Ø10	2	560	1120	6.2
	2	Ø10	2	560	1120	6.2
	3	Ø10	2	560	1120	6.2
	4	Ø10	2	560	1120	6.2
	5	Ø10	2	560	1120	6.2
	6	Ø10	2	560	1120	6.2
	7	Ø10	2	560	1120	6.2
	8	Ø10	2	560	1120	6.2
	9	Ø10	2	560	1120	6.2
	10	Ø10	2	560	1120	6.2
	11	Ø10	2	560	1120	6.2
	12	Ø10	2	560	1120	6.2
Total						75.6

Elemento	Pos.	Diám.	No.	Long. (cm)	Total AH-500CI (cm)	(kg)
Planta 11	1	Ø10	2	560	1120	6.2
	2	Ø10	2	560	1120	6.2
	3	Ø10	2	560	1120	6.2
	4	Ø10	2	560	1120	6.2
	5	Ø10	2	560	1120	6.2
	6	Ø10	2	560	1120	6.2
	7	Ø10	2	560	1120	6.2
	8	Ø10	2	560	1120	6.2
	9	Ø10	2	560	1120	6.2
	10	Ø10	2	560	1120	6.2
	11	Ø10	2	560	1120	6.2
	12	Ø10	2	560	1120	6.2
Total						75.6

Elemento	Pos.	Diám.	No.	Long. (cm)	Total AH-500CI (cm)	(kg)
Planta 15	1	Ø10	2	560	1120	6.2
	2	Ø10	2	560	1120	6.2
	3	Ø10	2	560	1120	6.2
	4	Ø10	2	560	1120	6.2
	5	Ø10	2	560	1120	6.2
	6	Ø10	2	560	1120	6.2
	7	Ø10	2	560	1120	6.2
	8	Ø10	2	560	1120	6.2
	9	Ø10	2	560	1120	6.2
	10	Ø10	2	560	1120	6.2
	11	Ø10	2	560	1120	6.2
	12	Ø10	2	560	1120	6.2
Total						75.6

Elemento	Pos.	Diám.	No.	Long. (cm)	Total AH-500CI (cm)	(kg)
Planta 18	1	Ø10	2	560	1120	6.2
	2	Ø10	2	560	1120	6.2
	3	Ø10	2	560	1120	6.2
	4	Ø10	2	560	1120	6.2
	5	Ø10	2	560	1120	6.2
	6	Ø10	2	560	1120	6.2
	7	Ø10	2	560	1120	6.2
	8	Ø10	2	560	1120	6.2
	9	Ø10	2	560	1120	6.2
	10	Ø10	2	560	1120	6.2
	11	Ø10	2	560	1120	6.2
	12	Ø10	2	560	1120	6.2
Total						75.6

Elemento	Pos.	Diám.	No.	Long. (cm)	Total AH-500CI (cm)	(kg)
Planta 22	1	Ø10	2	560	1120	6.2
	2	Ø10	2	560	1120	6.2
	3	Ø10	2	560	1120	6.2
	4	Ø10	2	560	1120	6.2
	5	Ø10	2	560	1120	6.2
	6	Ø10	2	560	1120	6.2
	7	Ø10	2	560	1120	6.2
	8	Ø10	2	560	1120	6.2
	9	Ø10	2	560	1120	6.2
	10	Ø10	2	560	1120	6.2
	11	Ø10	2	560	1120	6.2
	12	Ø10	2	560	1120	6.2
Total						75.6



UNIVERSIDAD AUTONOMA JUAN MISAE SARACHO
 DEPARTAMENTO DE ESTRUCTURAS

MATERIA: CIV-502 Proyecto de grado II

PLANO DE VIGAS- PRIMER PISO

Estudiante:
 FABIANA IRAHOLA MURILLO

Escala: 1:100

Fecha: Tja, Marzo 2022