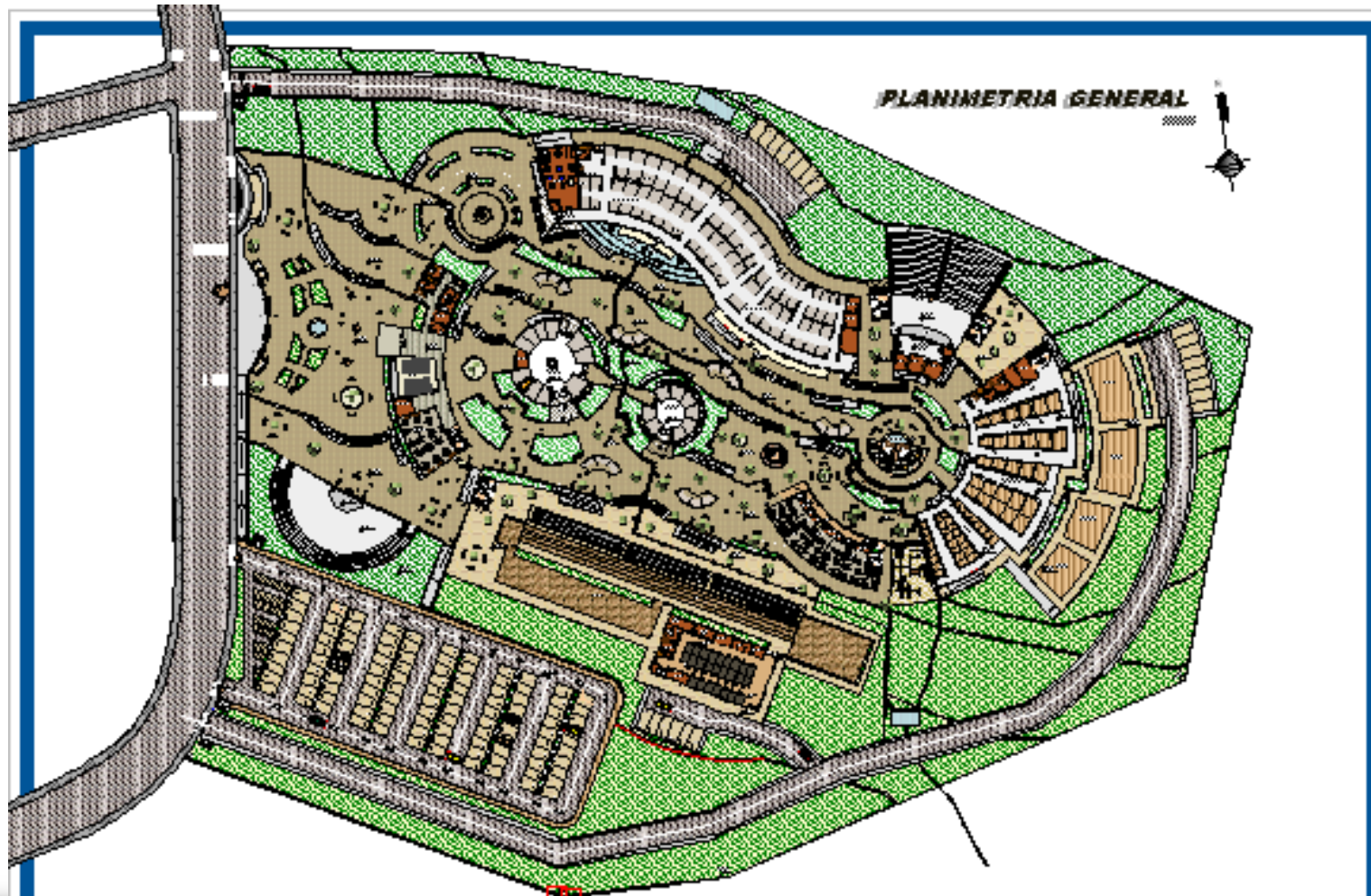
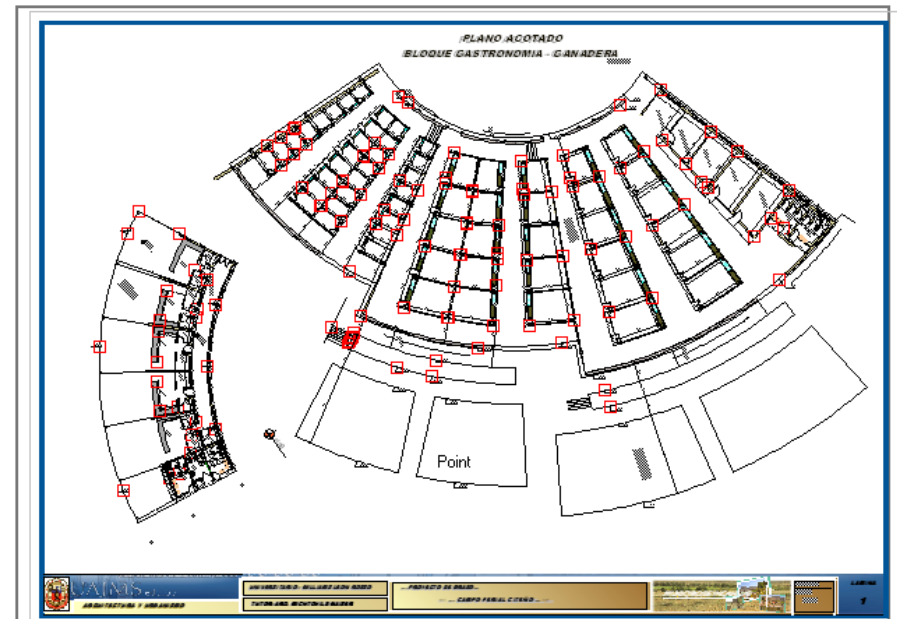
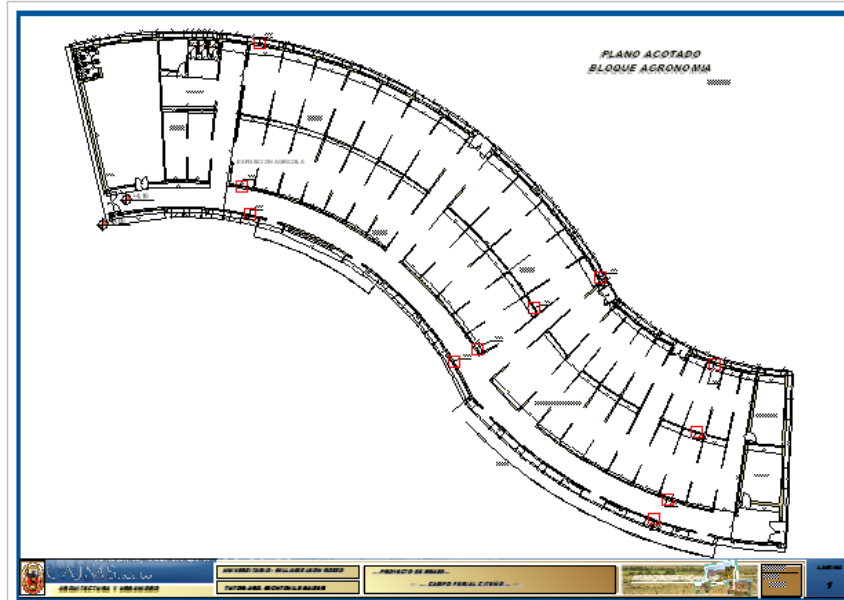


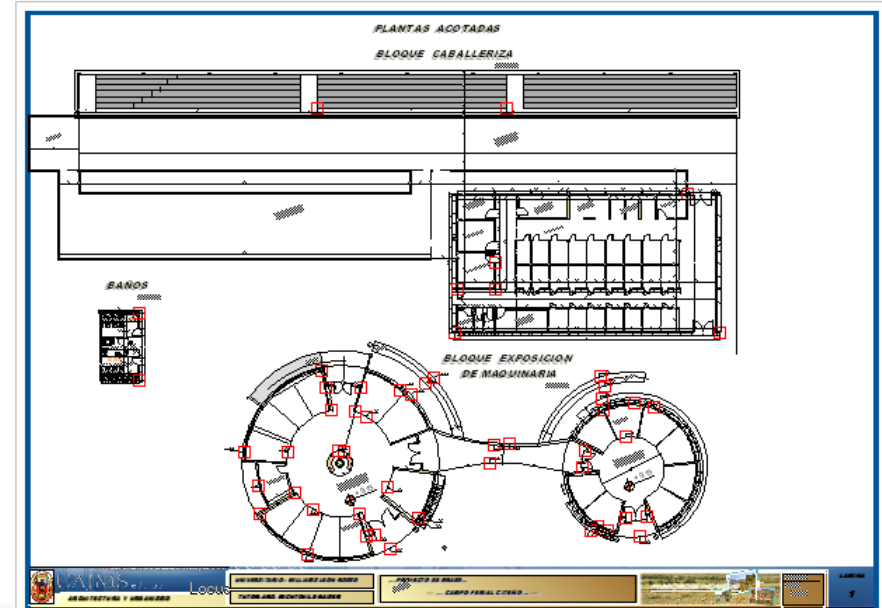
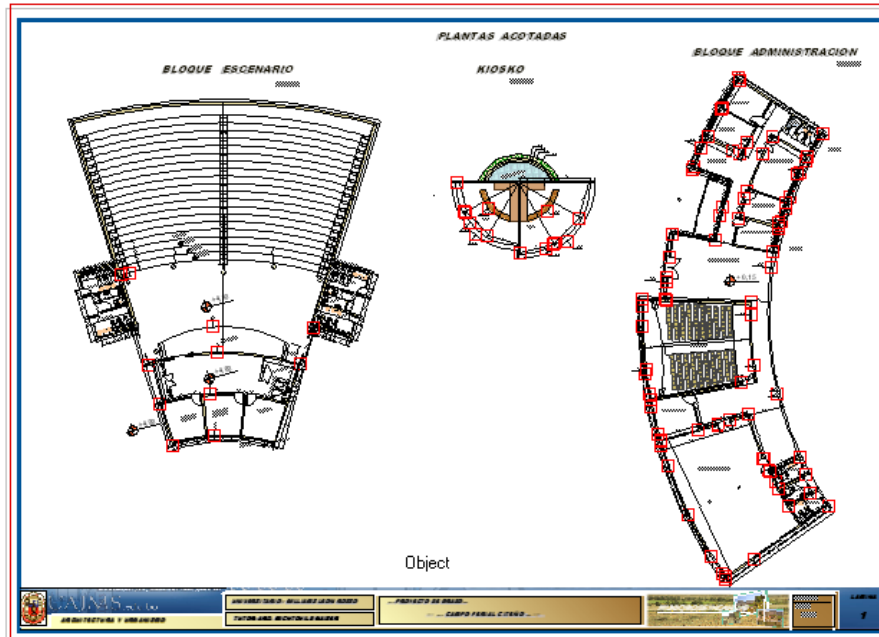
PLANOS ARQUITECTONICOS

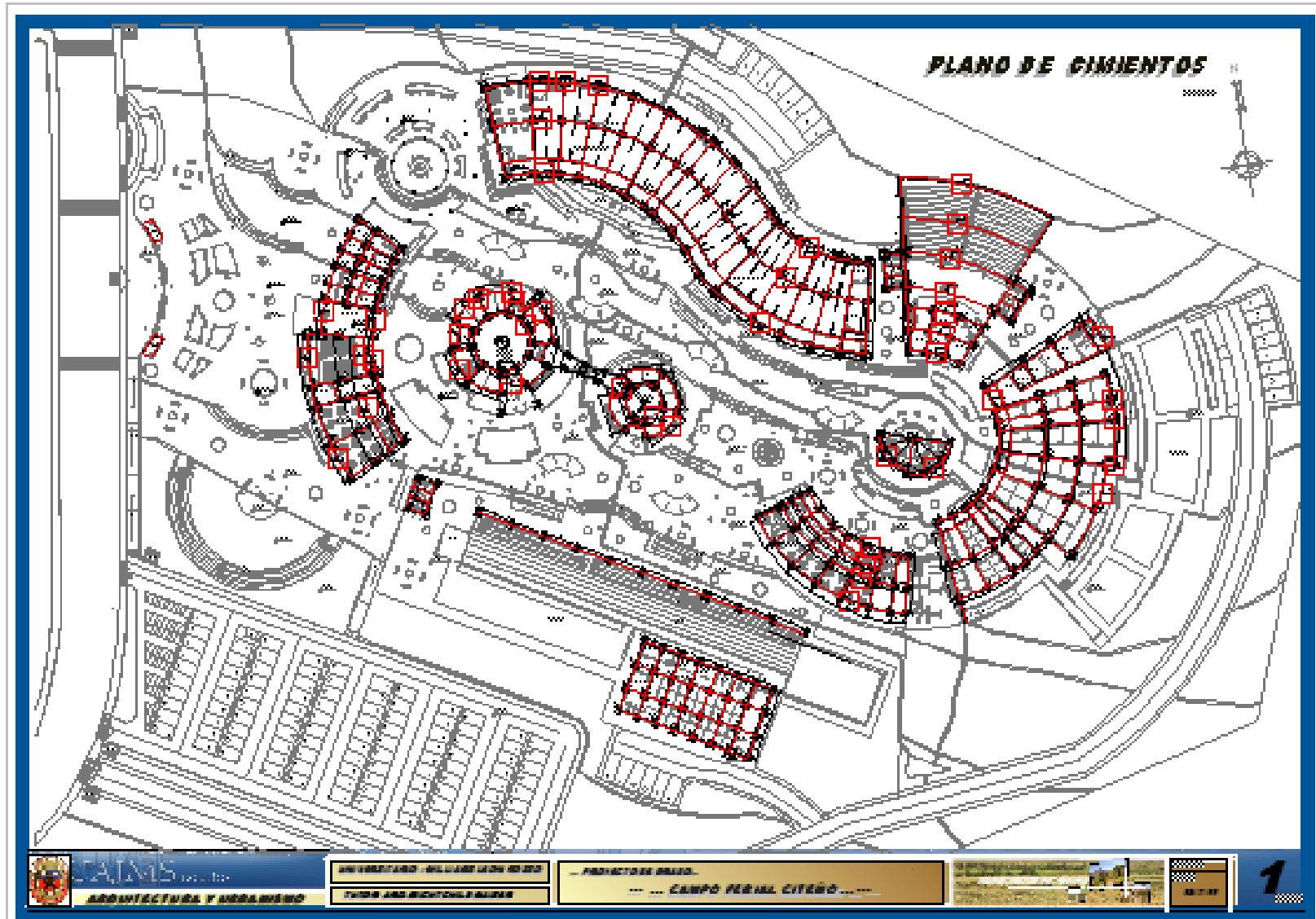


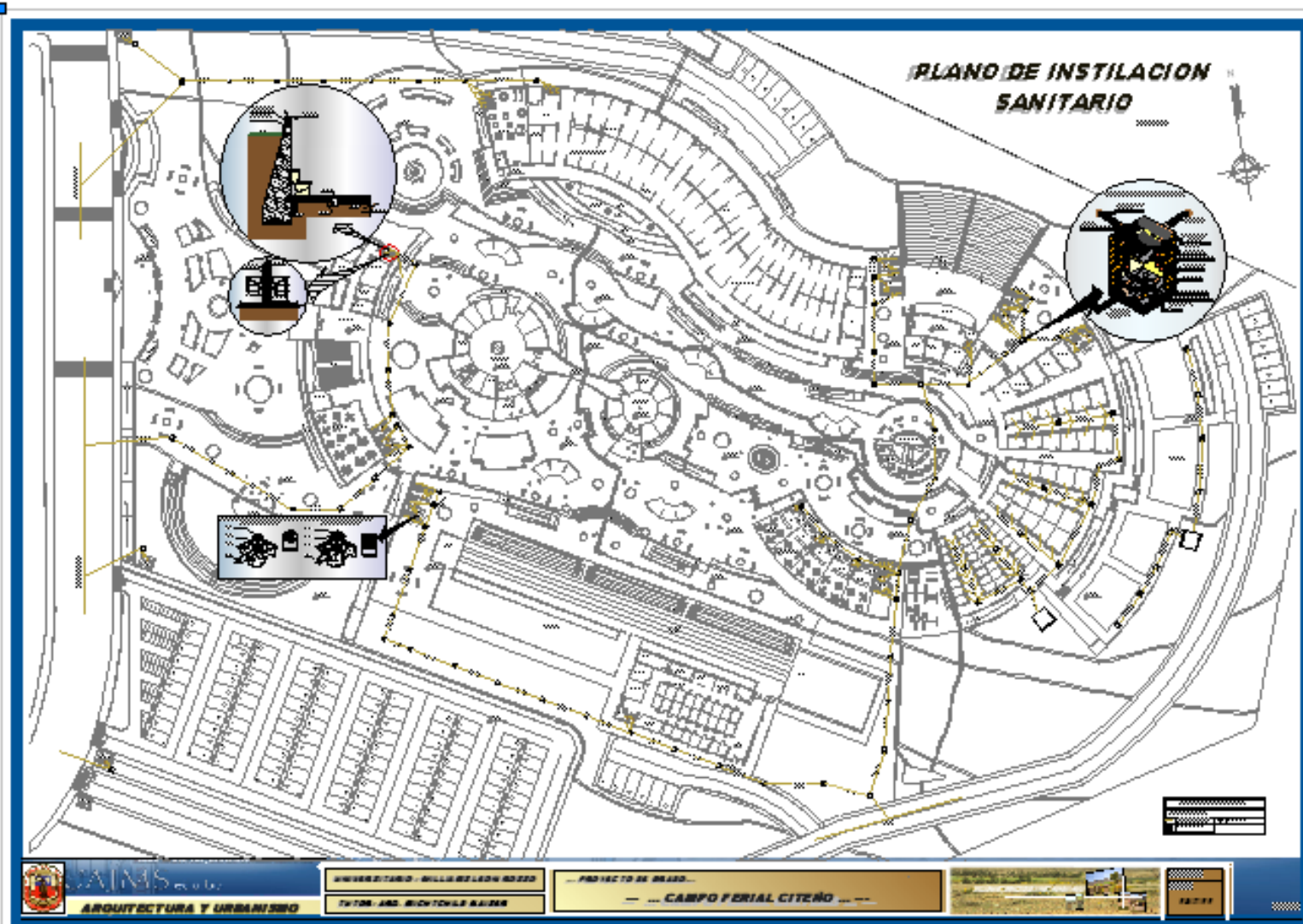
PROYECTO DE GRADO CAMPO FERIAL



PROYECTO DE GRADO CAMPO FERIAL







AIMS en. de
ARQUITECTURA Y URBANISMO

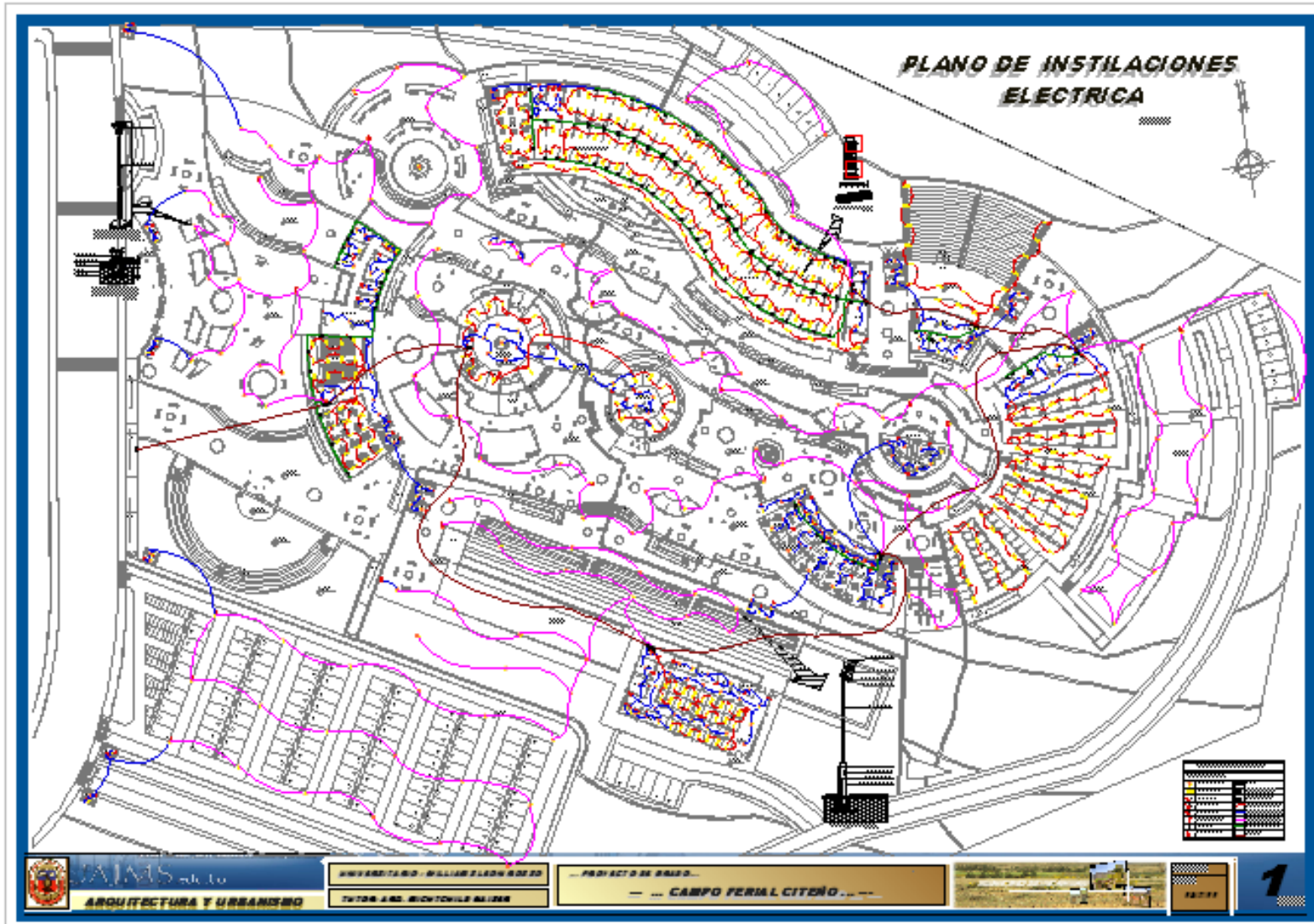
UNIVERSITARIO - BILIBAZA LAZAR RODRIGUEZ
TUTOR: ING. MICHAELA BAIZEN

PROYECTO DE GRADO
CAMPO FERIAL CITEÑO



1:2000





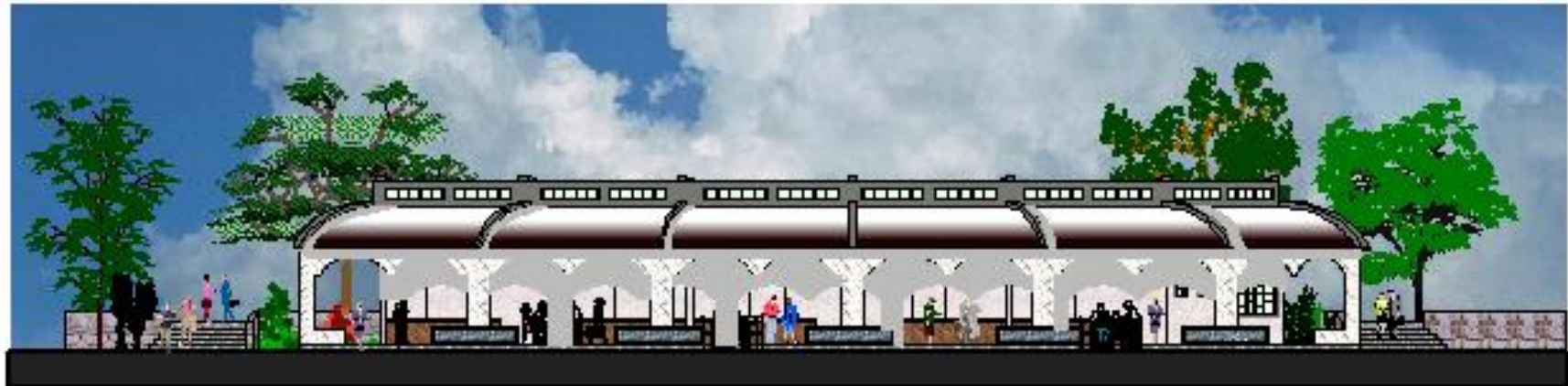
FACHADA FRONTAL
"PLAZA ADMINISTRATIVA"



FACHADA LATERAL
"PLAZA ADMINISTRATIVA"



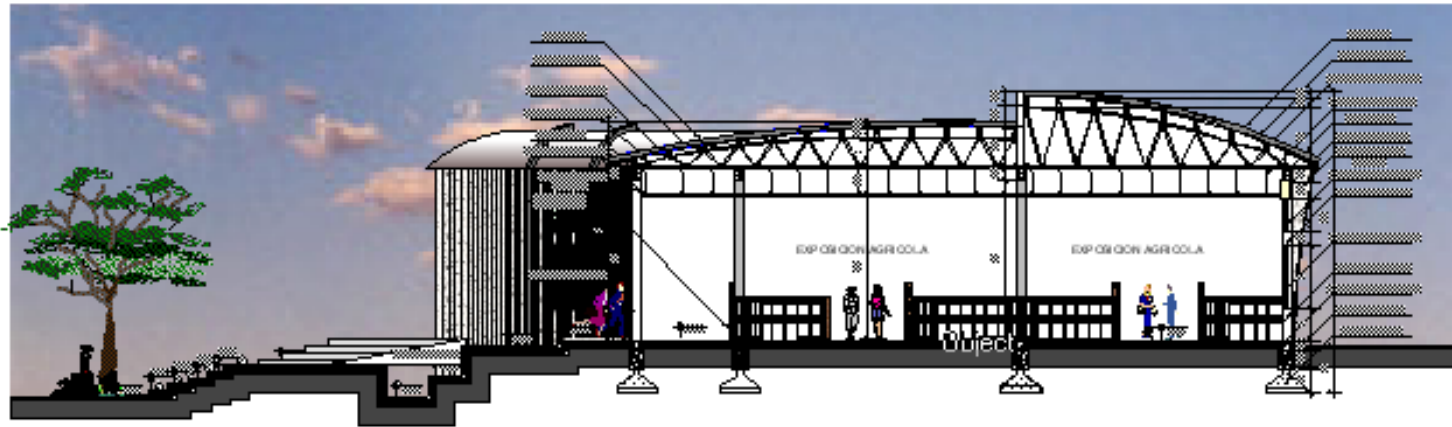
**FACHADA FRONTAL
"BLOQUE EXPOSICION EASTERNITA"**



**FACHADA LATERAL
"BLOQUE EXPOSICION KARABERE"**



--- .. CORTE BLOQUE AGRICOLA .. ---



--- .. CORTE BLOQUE GANADERIA .. ---



--- .. CORTE BLOQUE GASTRONOMIA Y TEATRO .. ---



--- .. CORTE CABALLERIZA Y EXPOSICION AGRICULTURA .. ---



