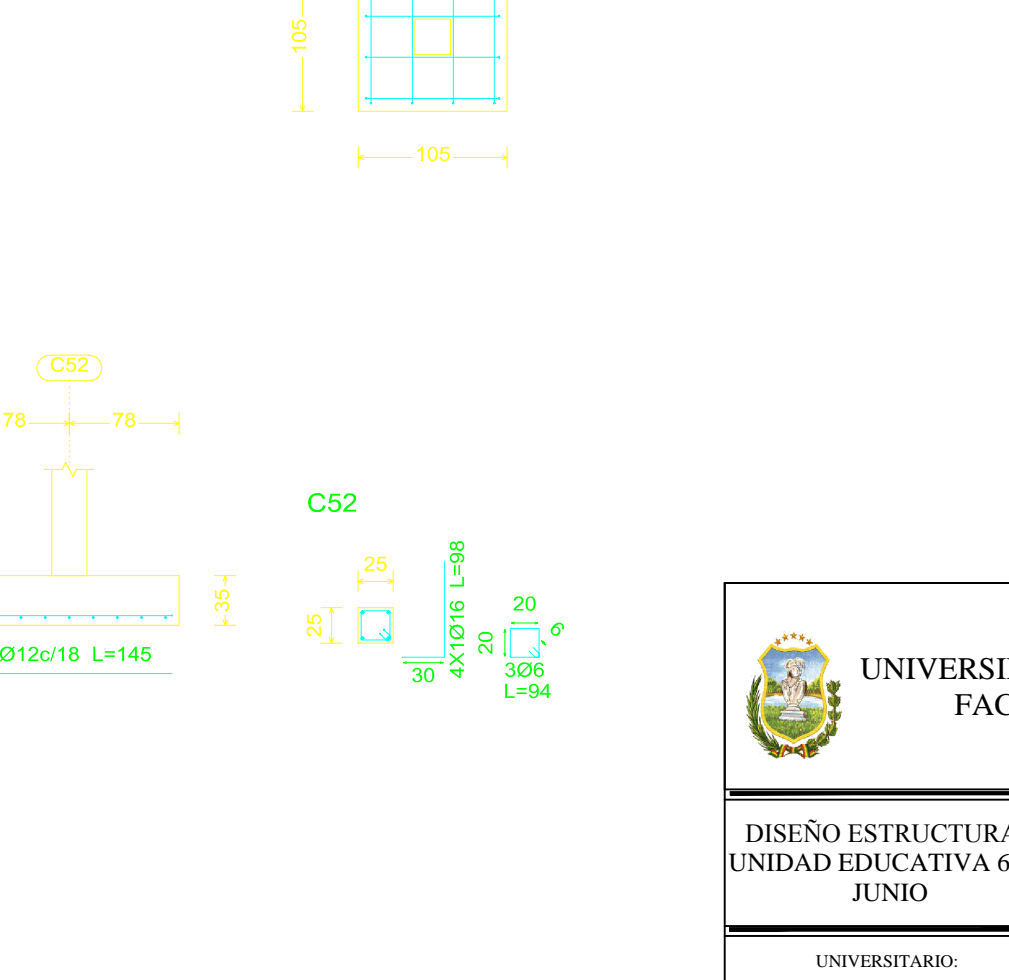
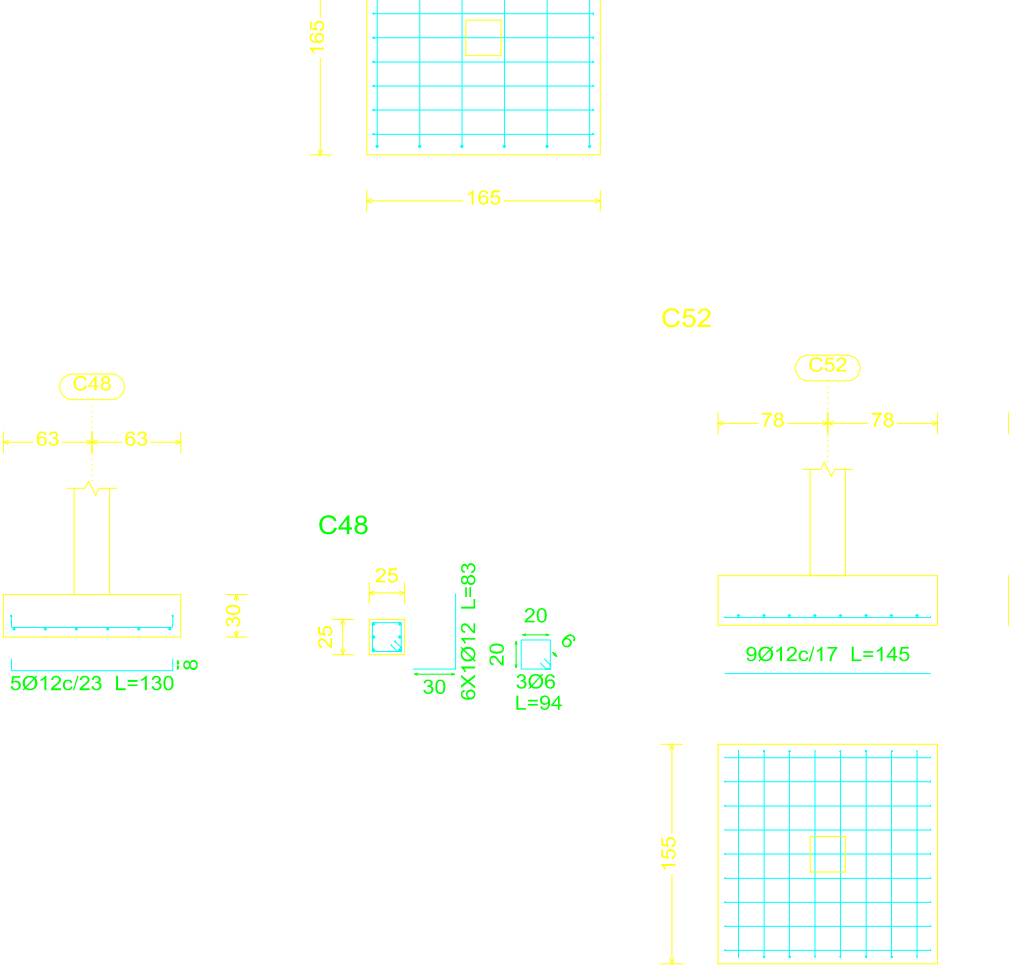
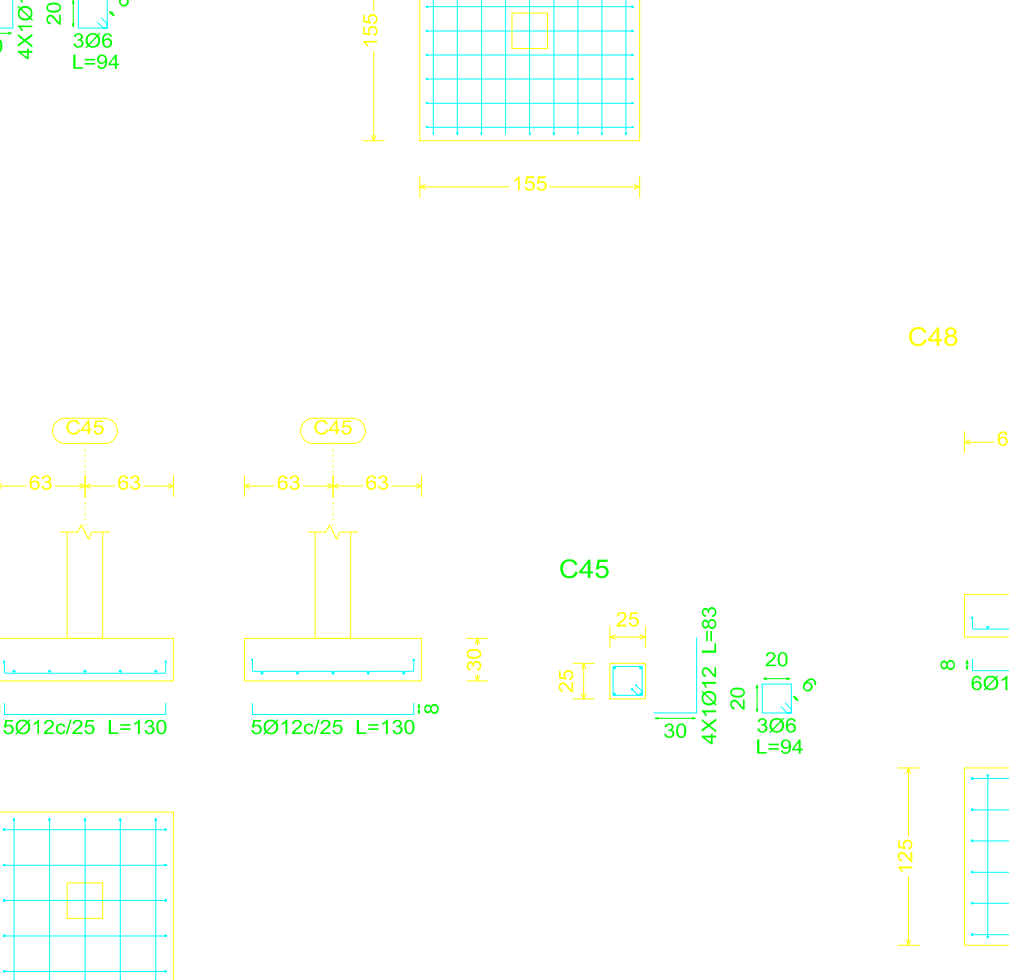
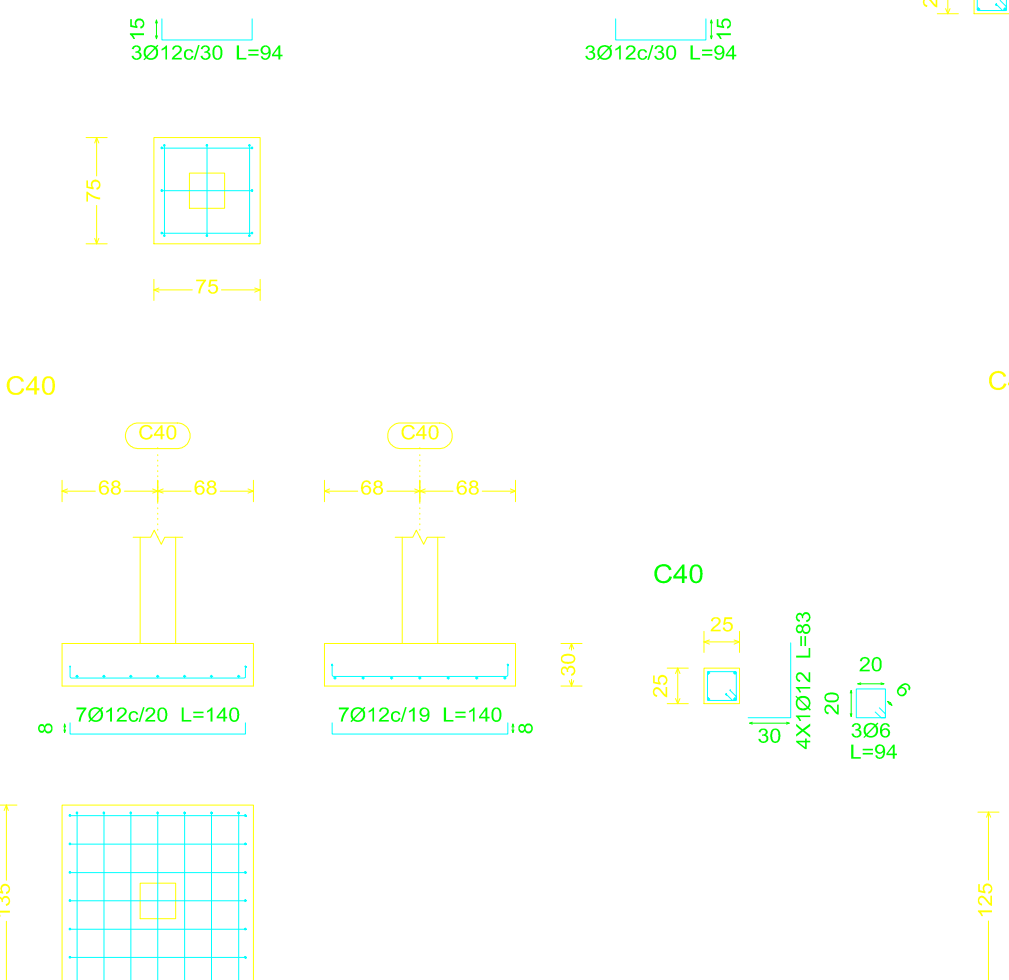
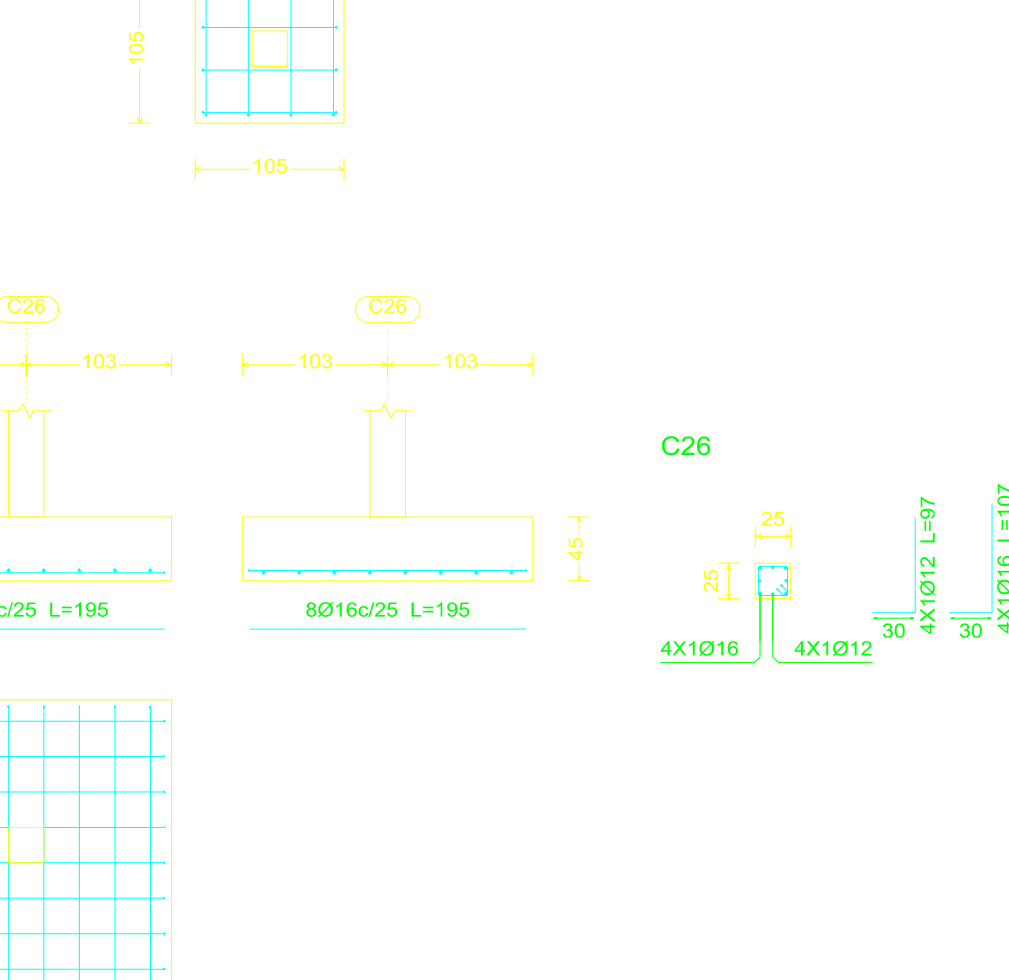
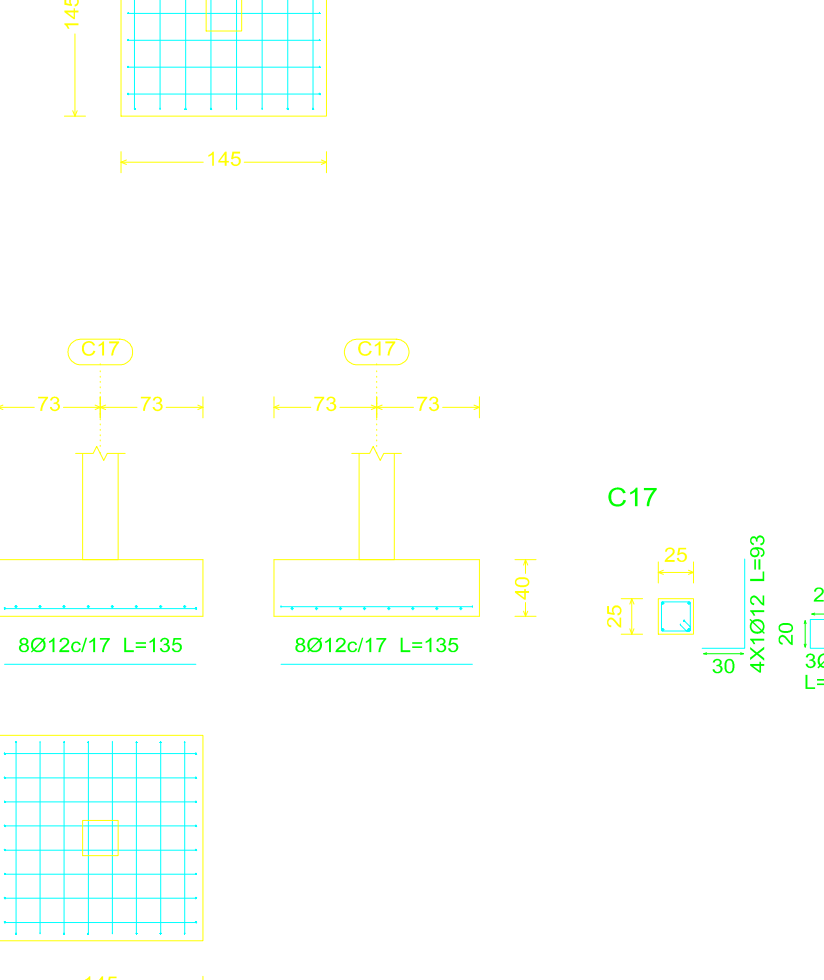
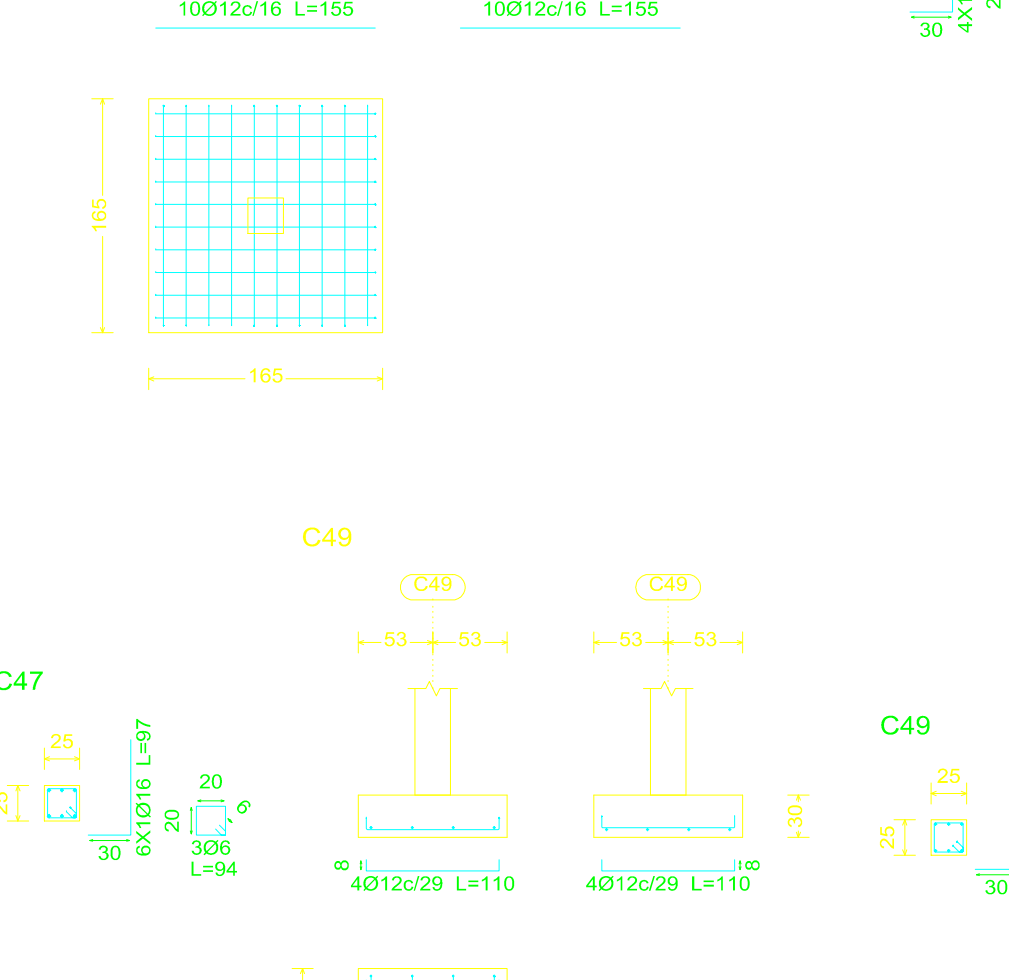
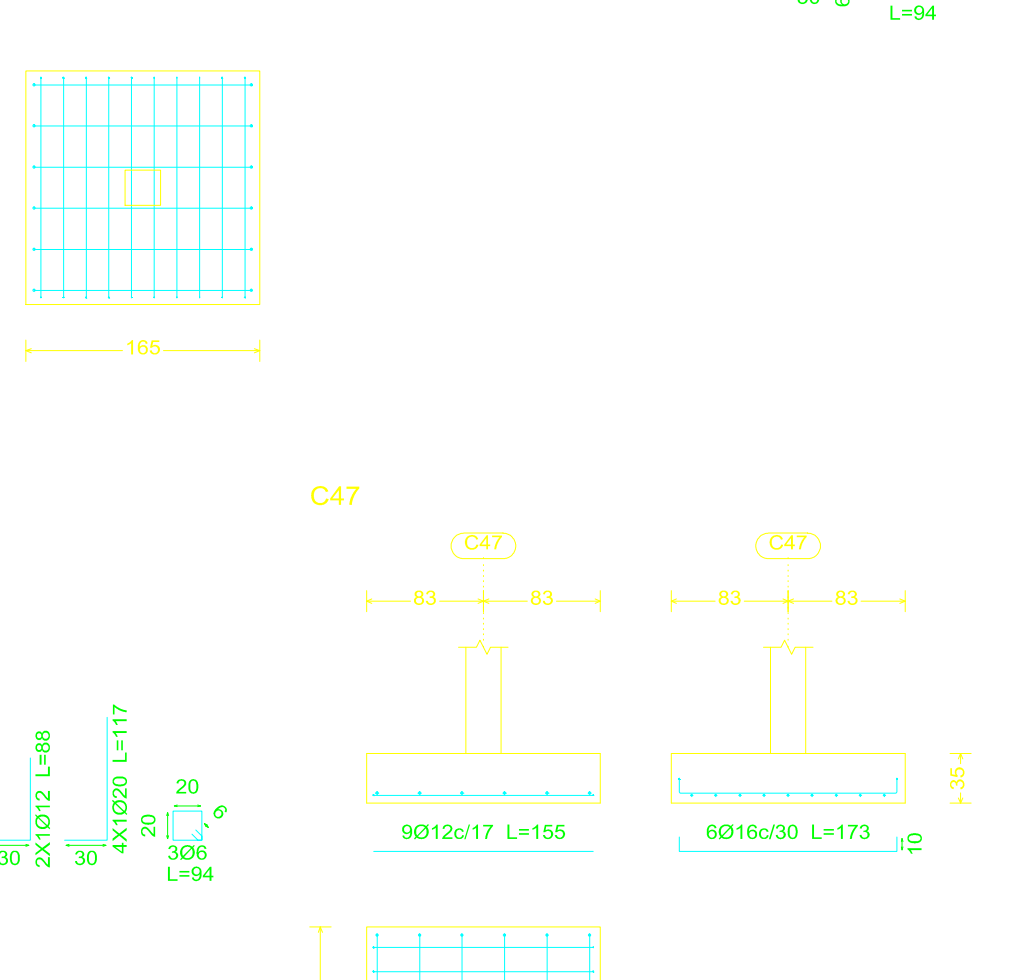
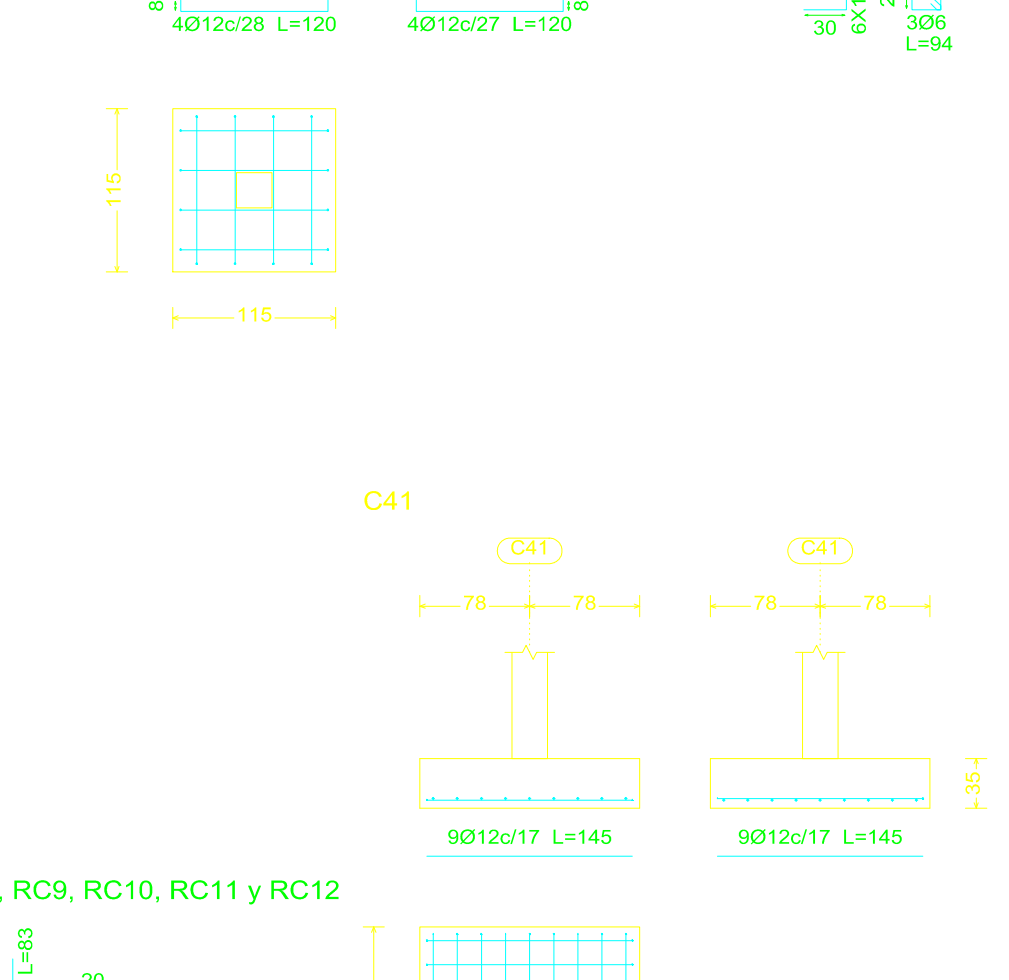
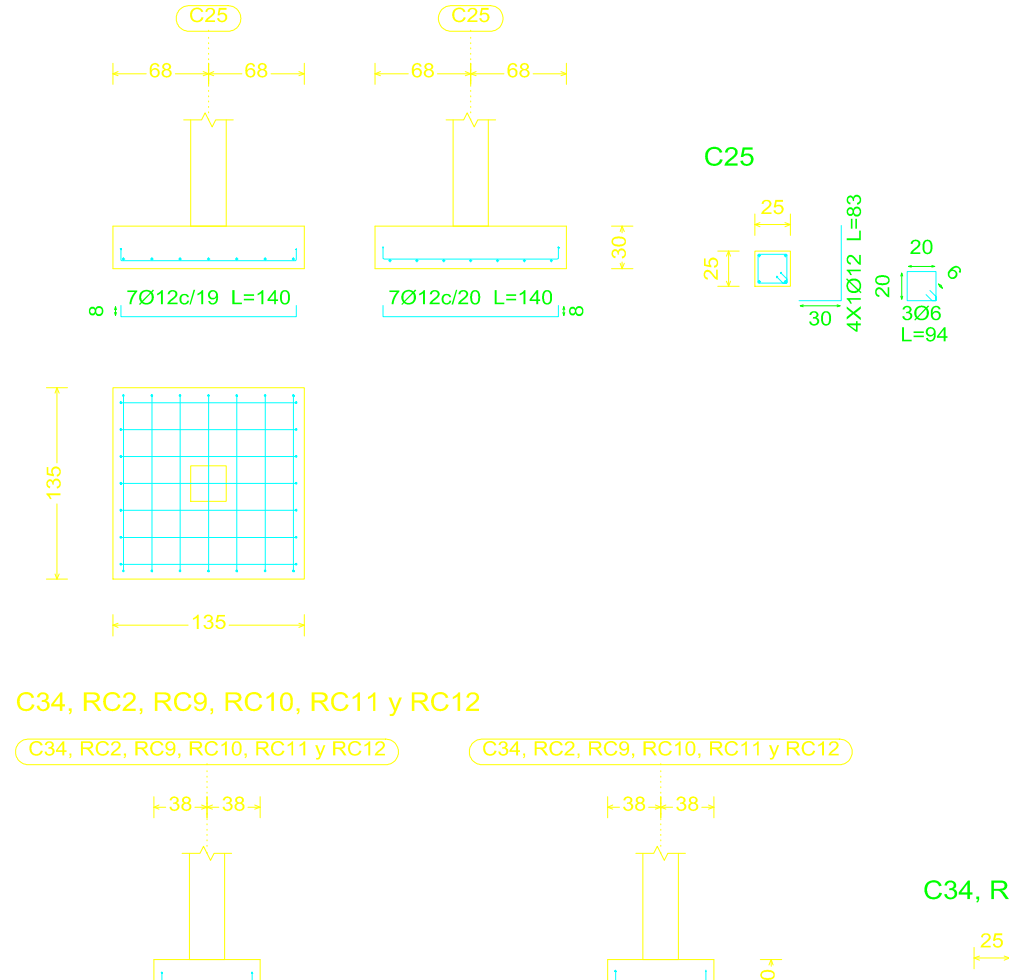
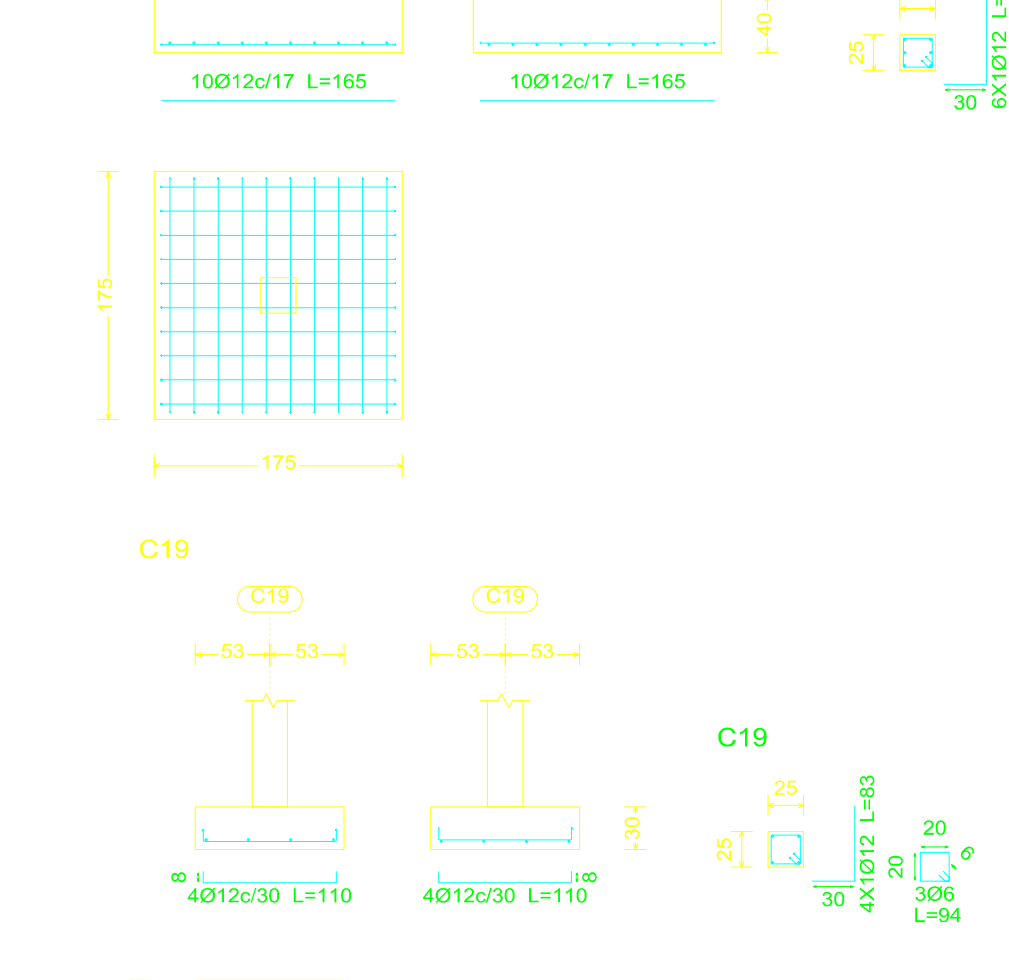
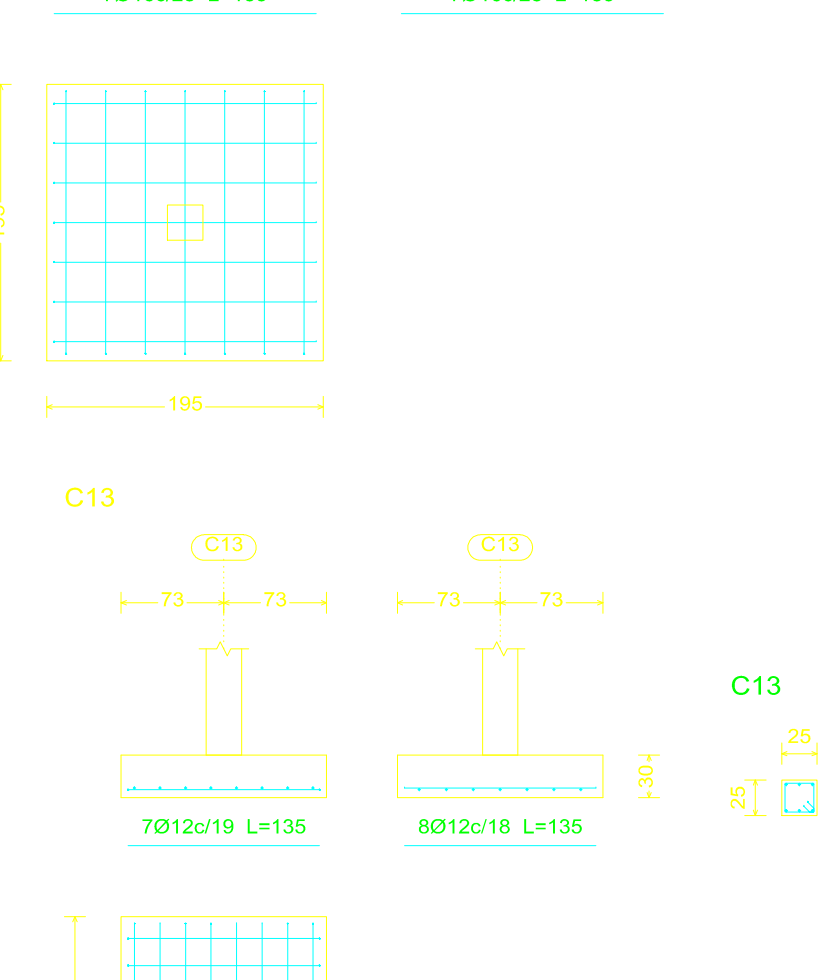
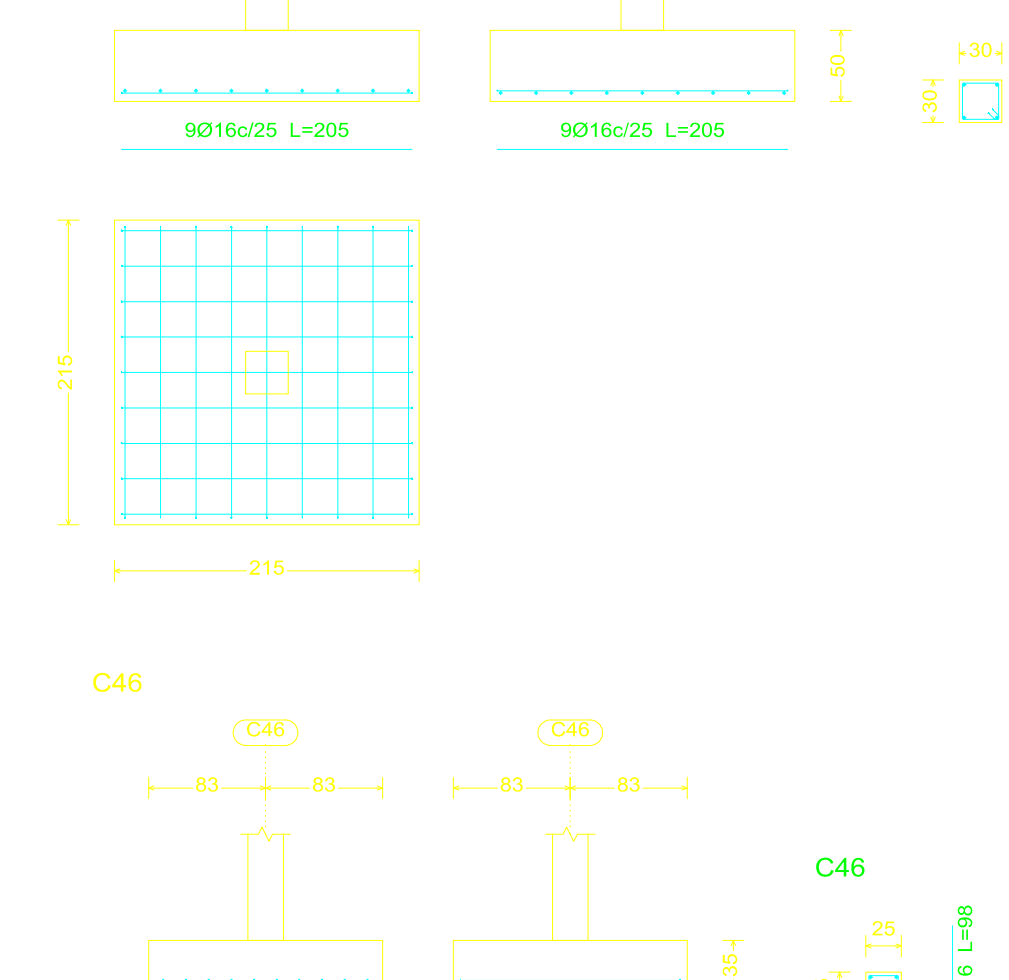
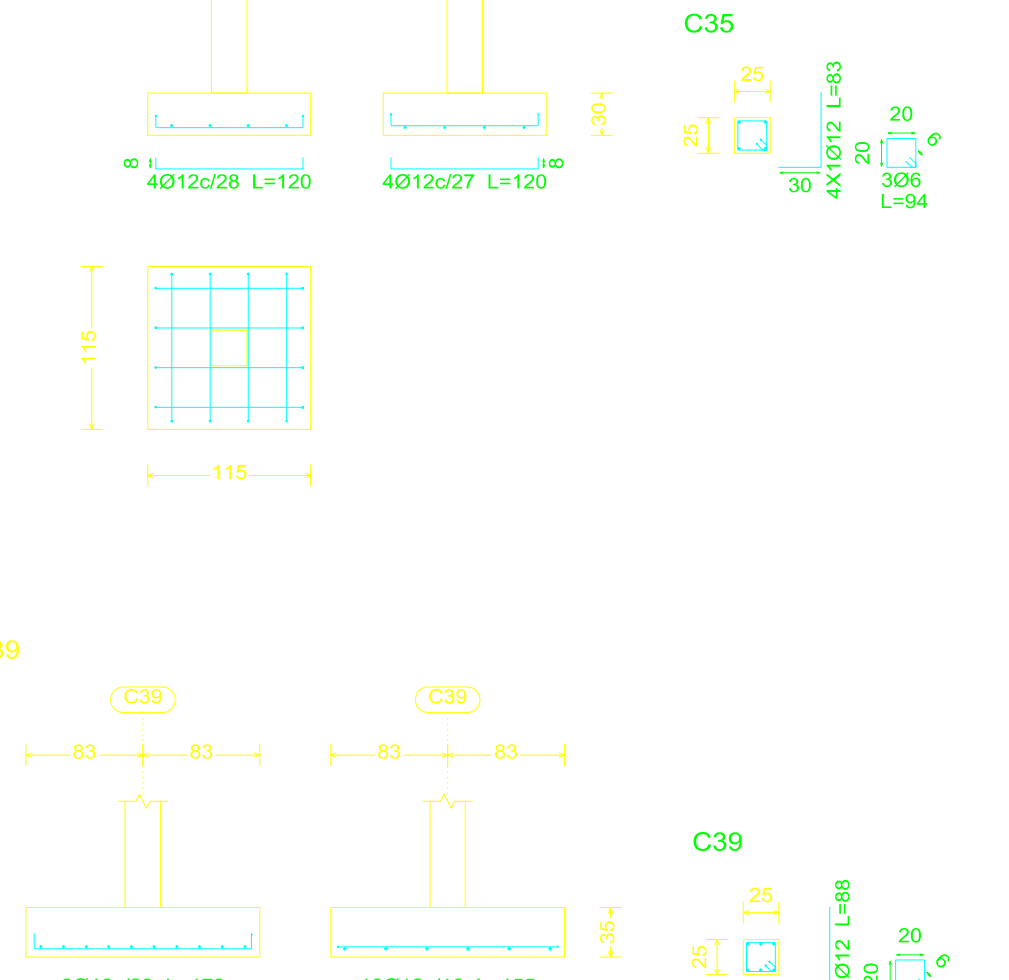
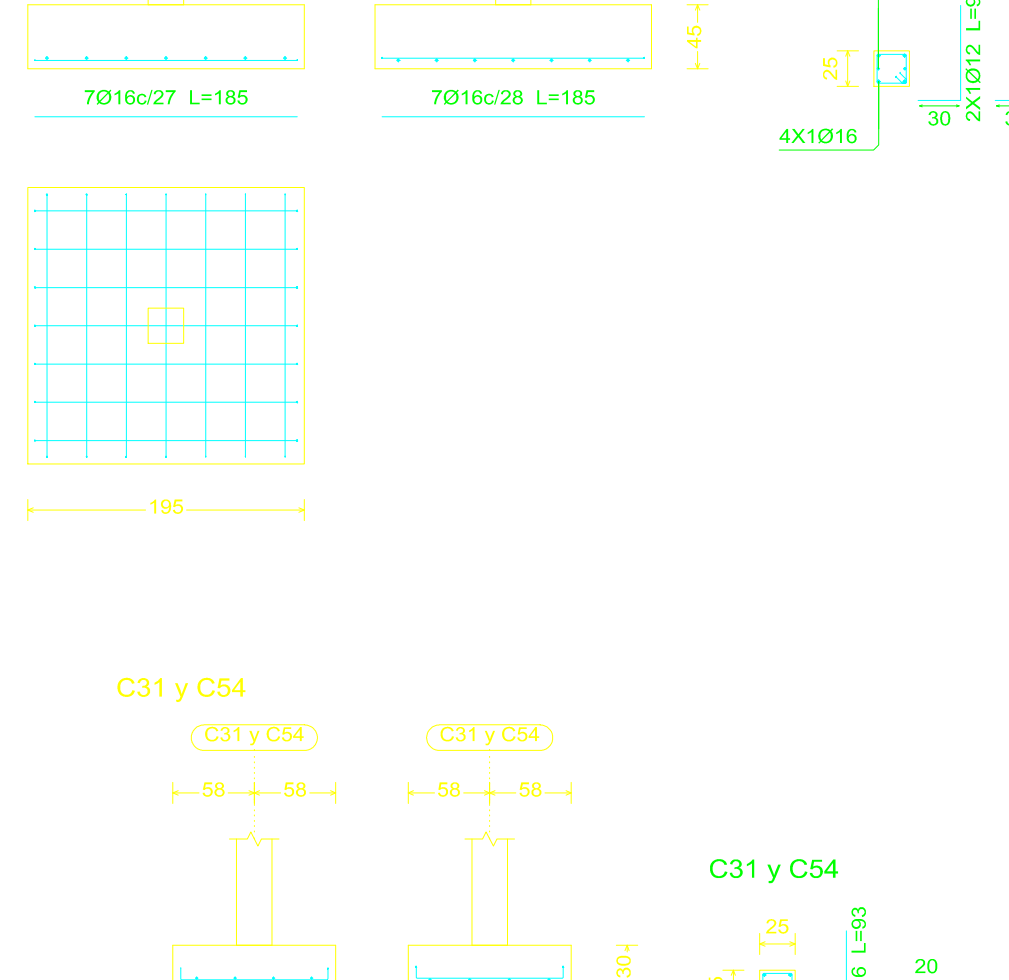
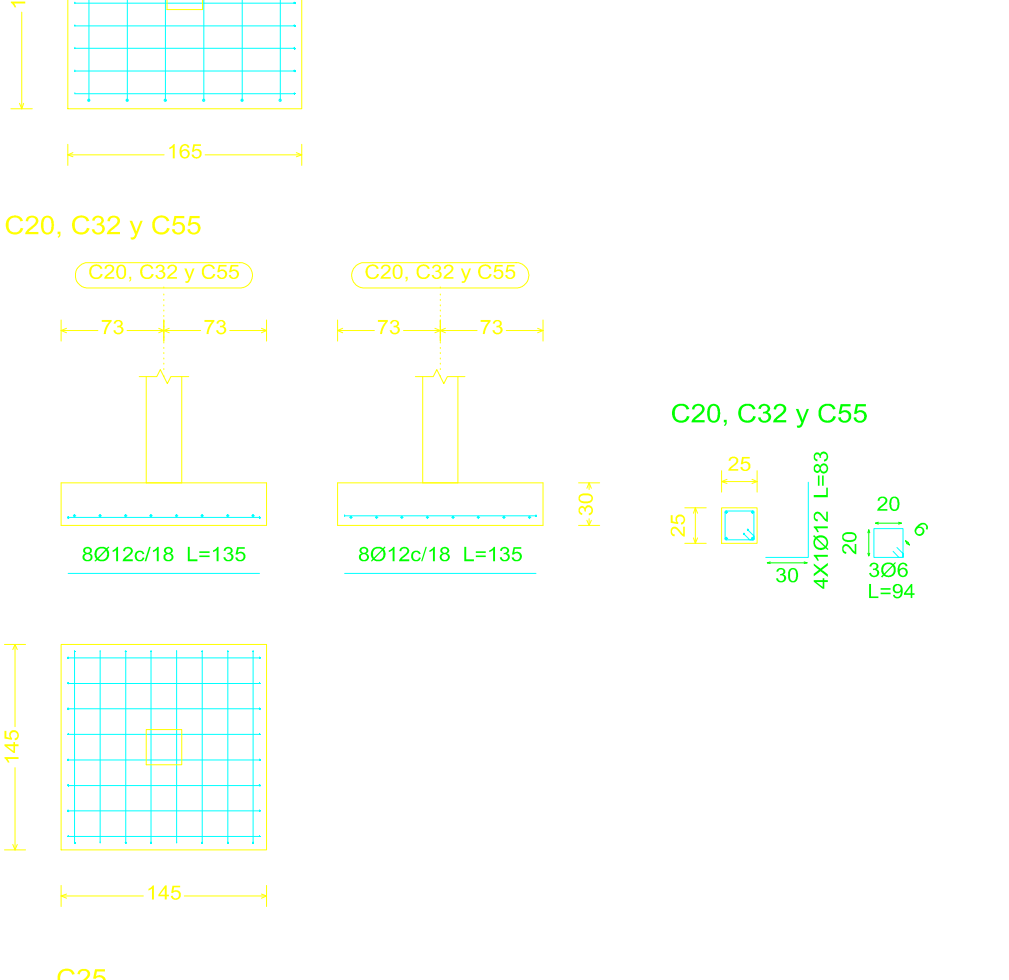
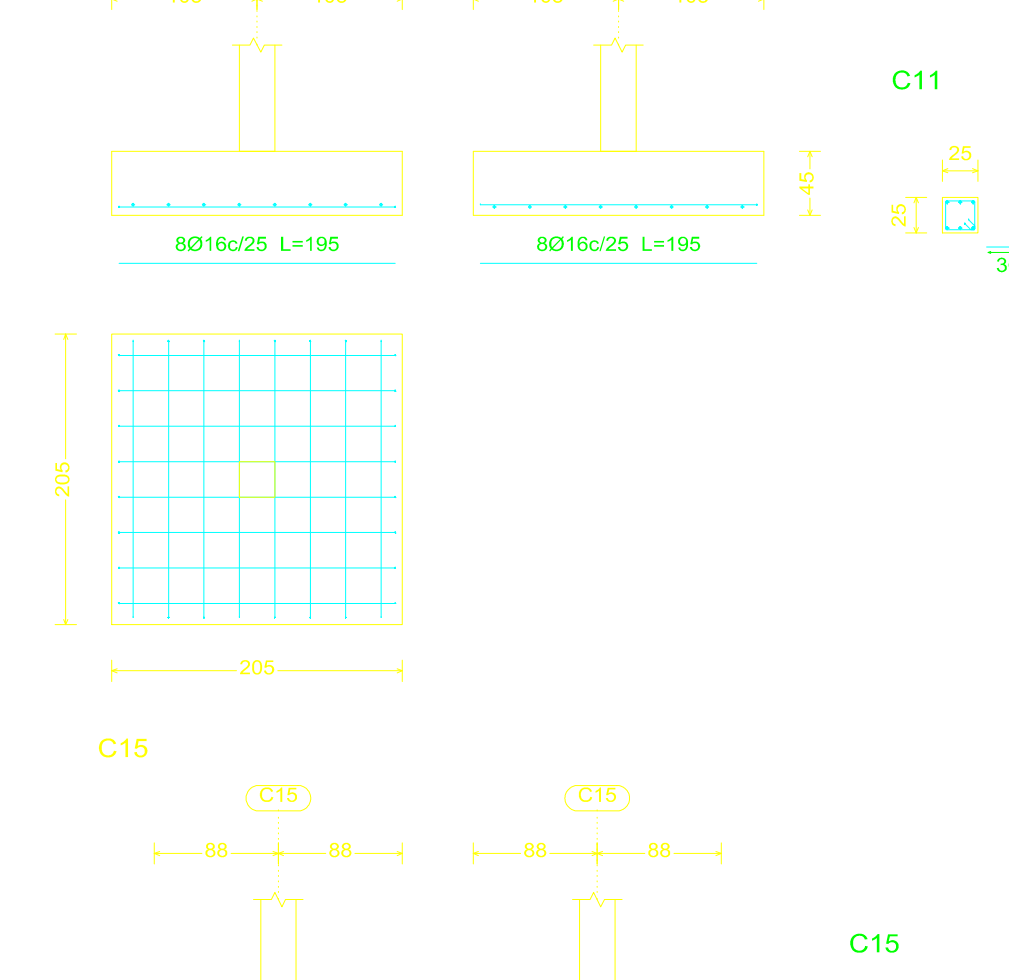
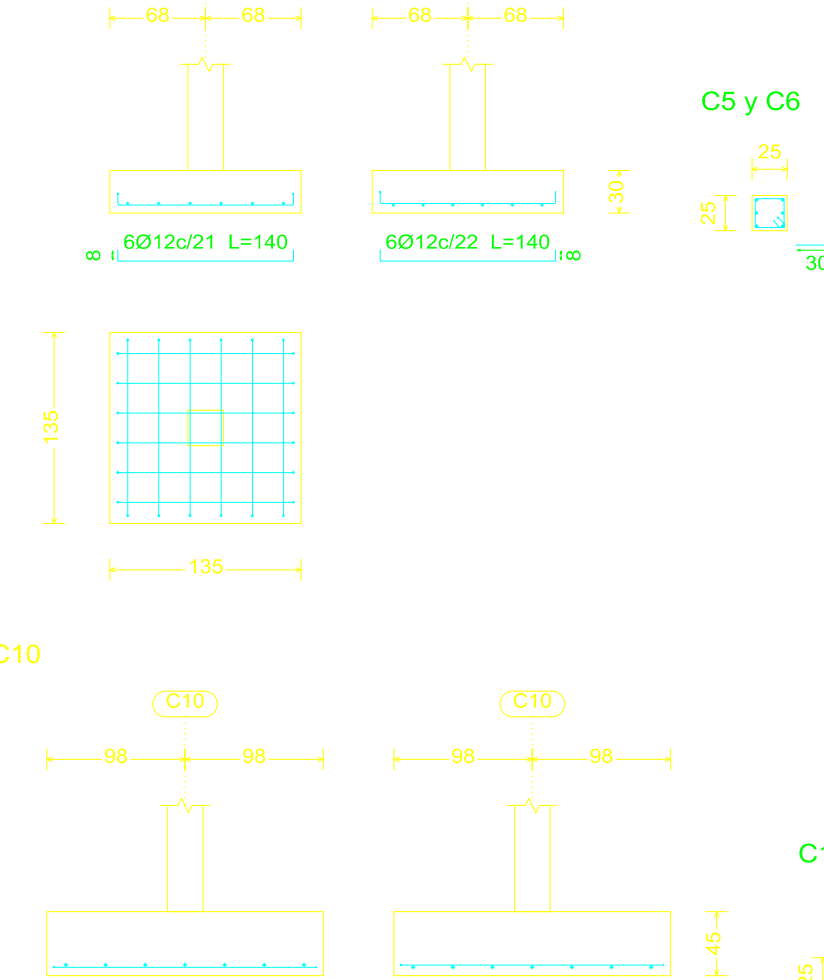
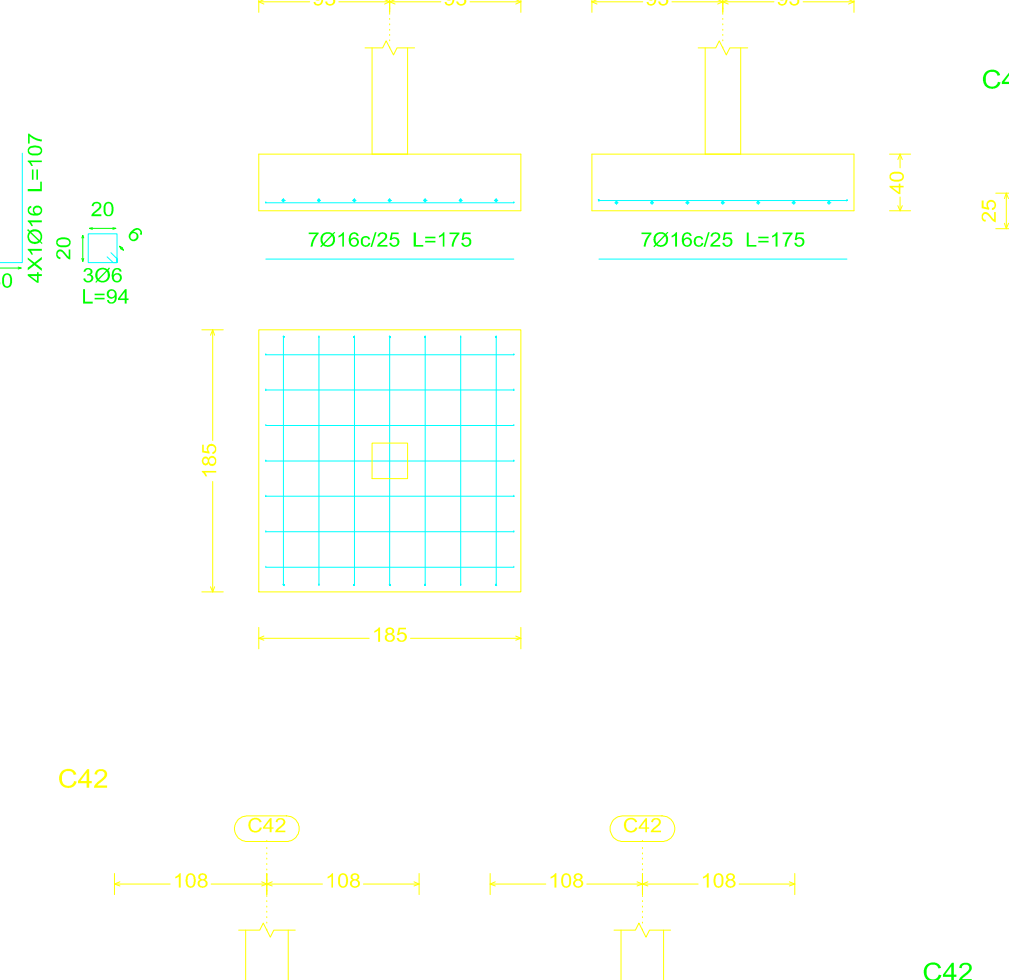
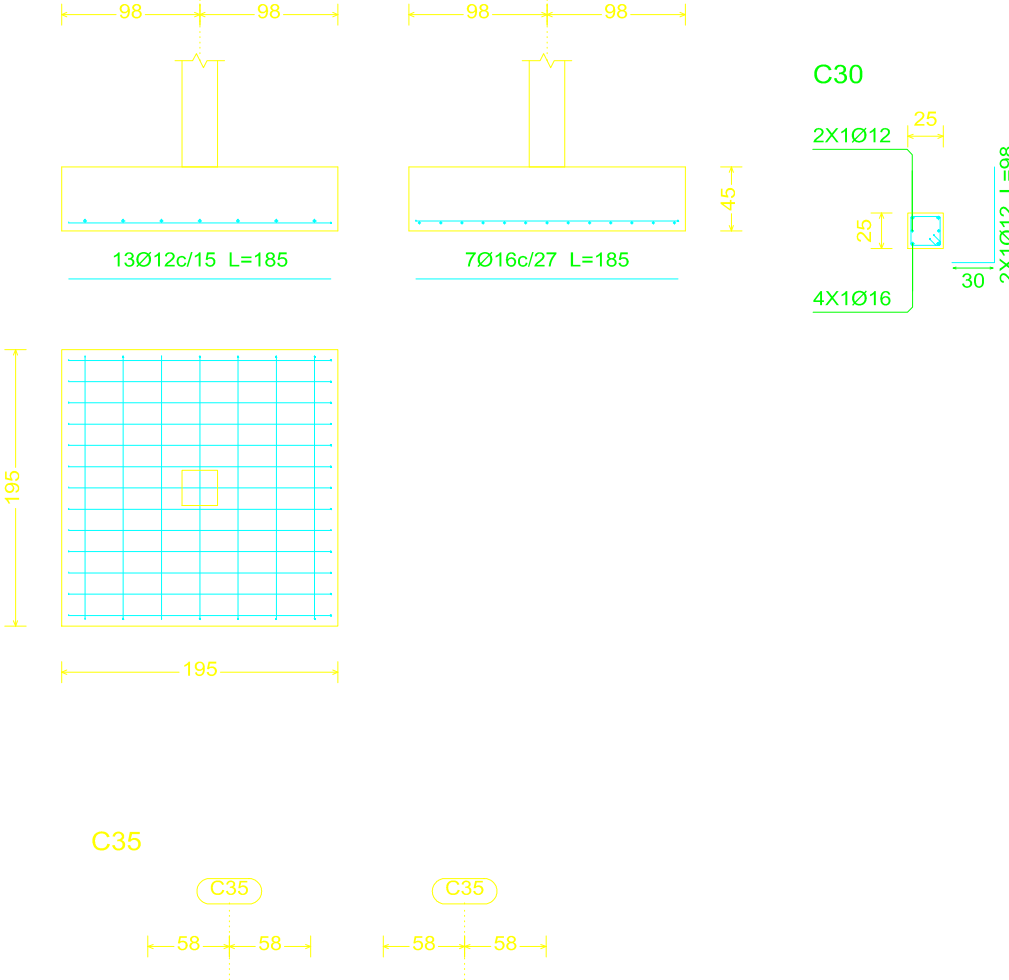
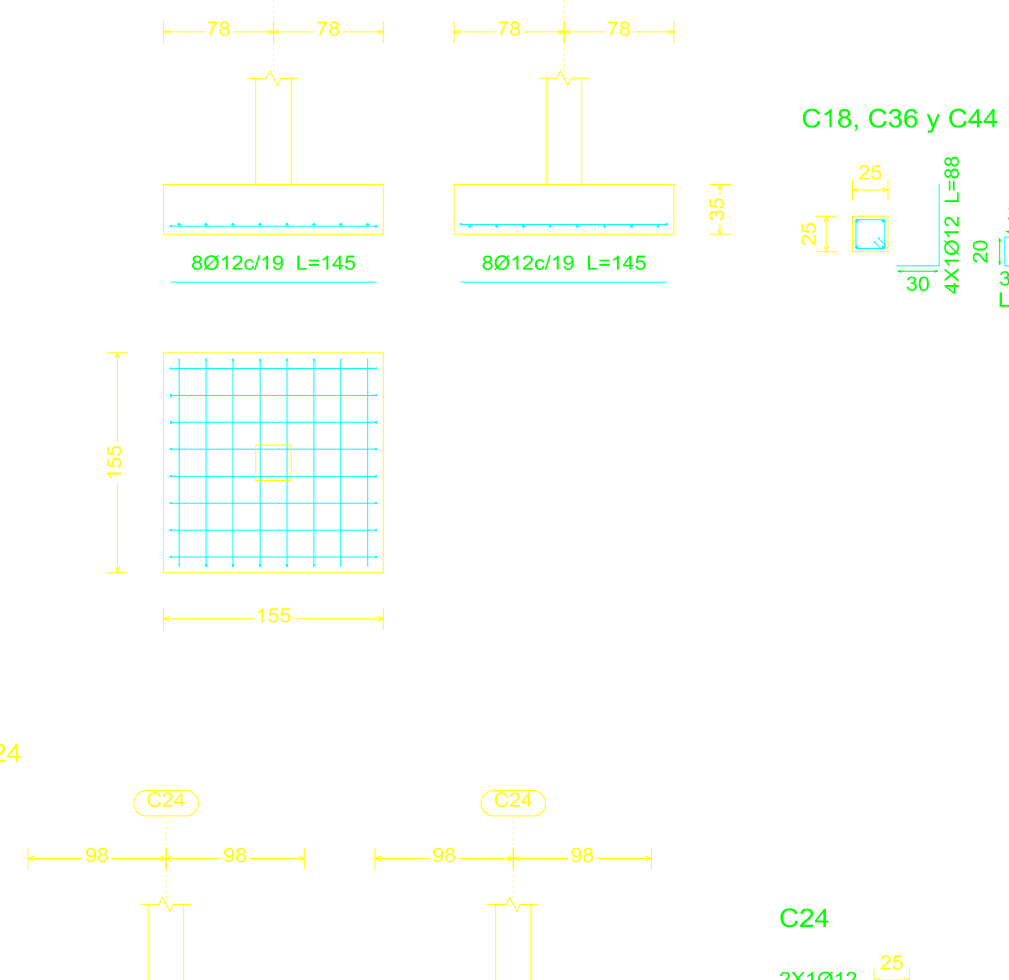
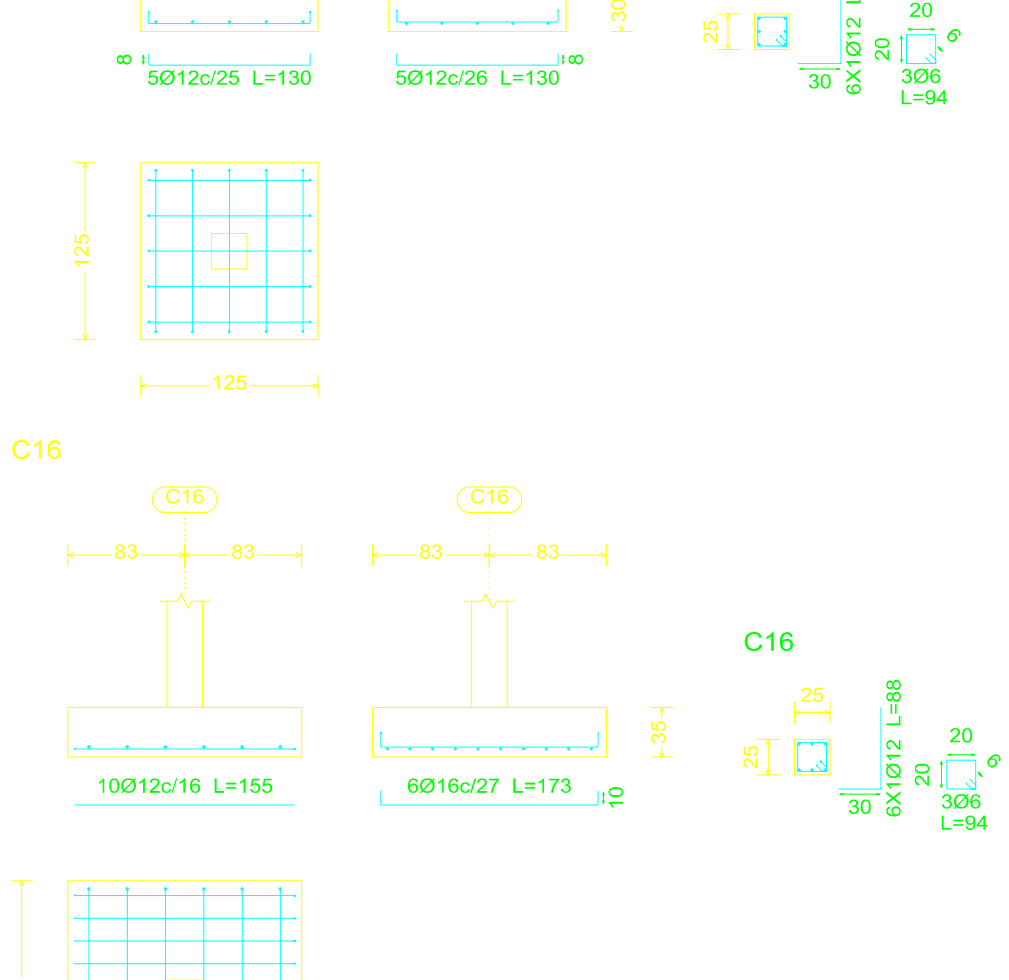
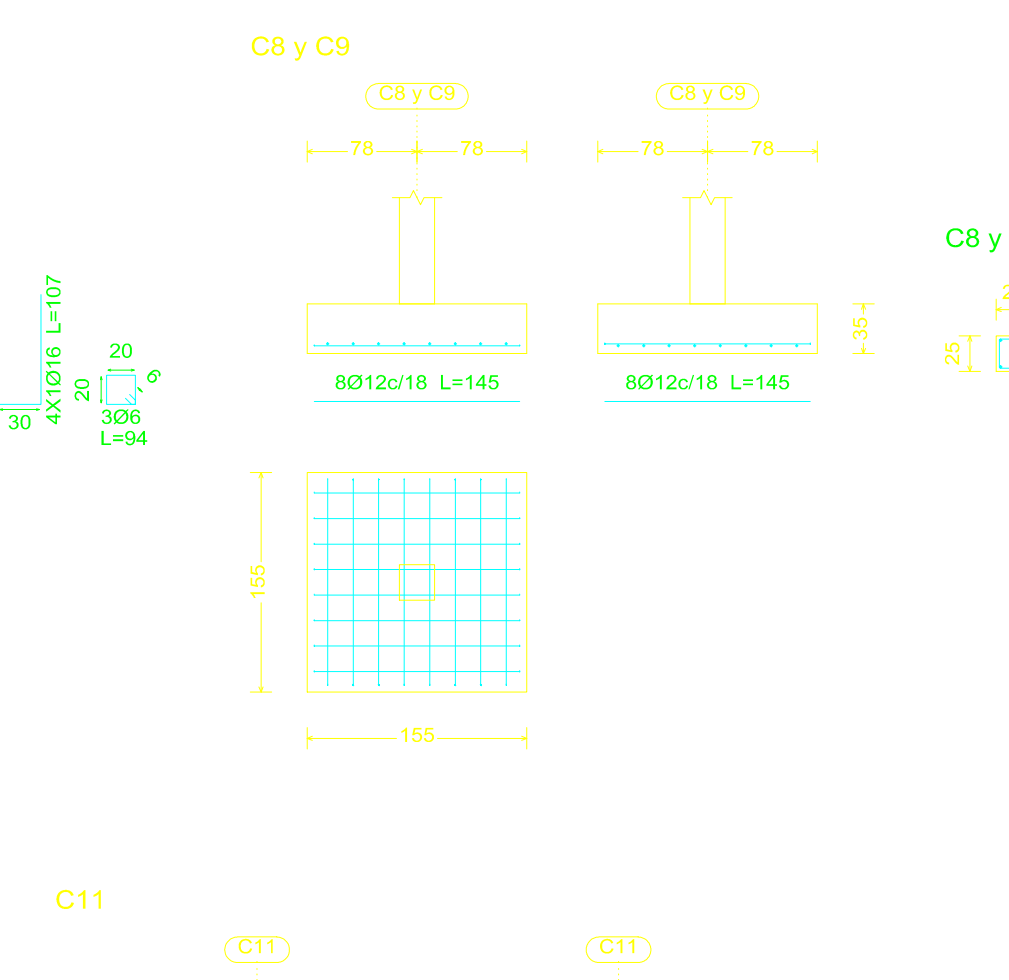
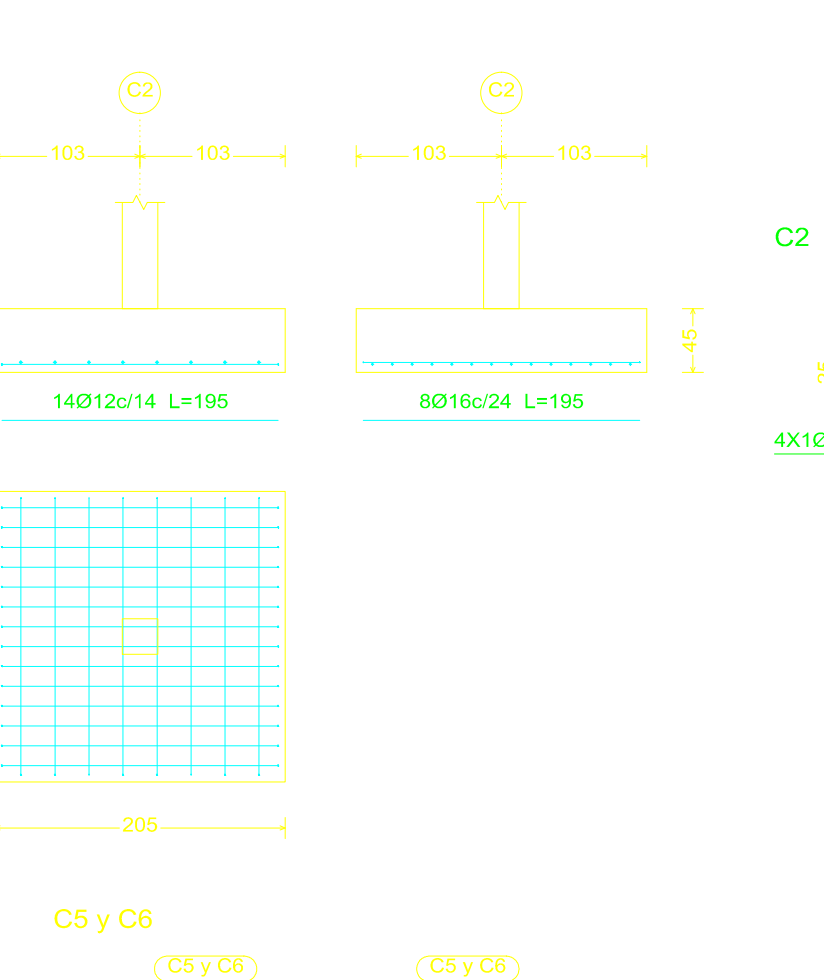
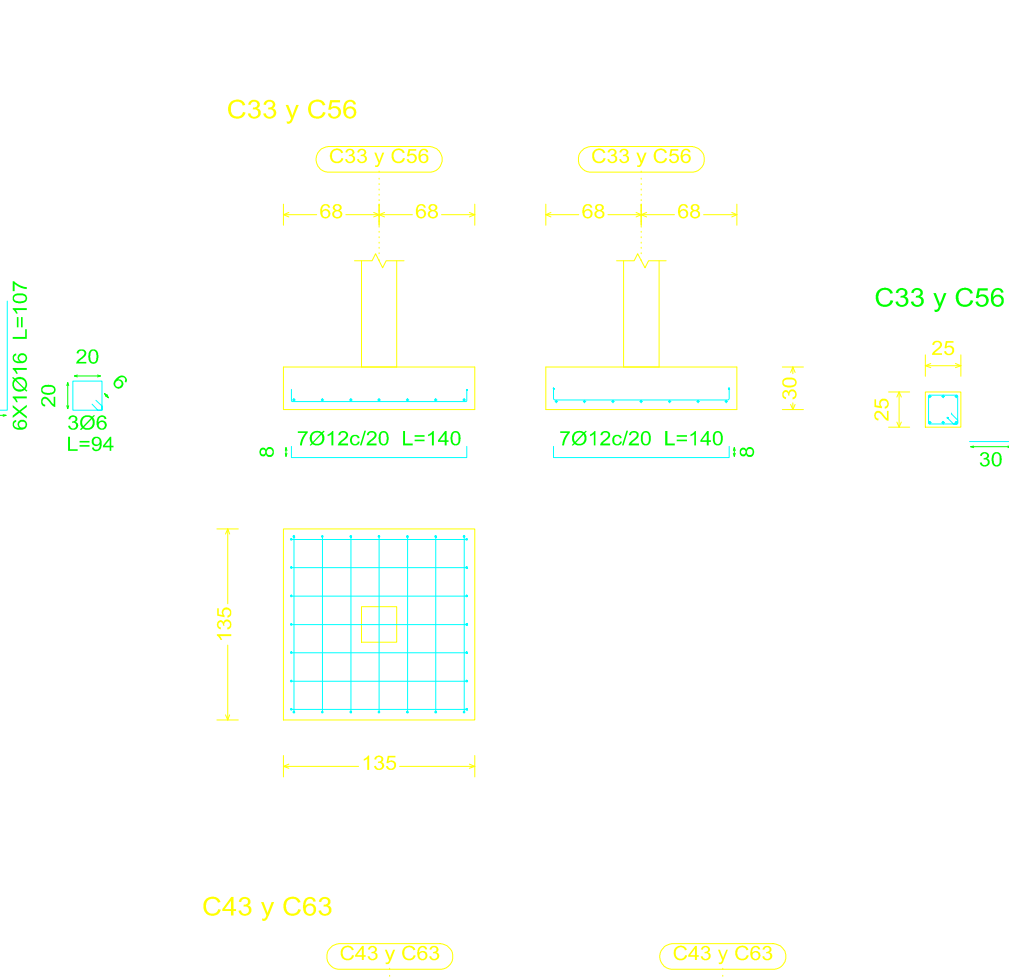
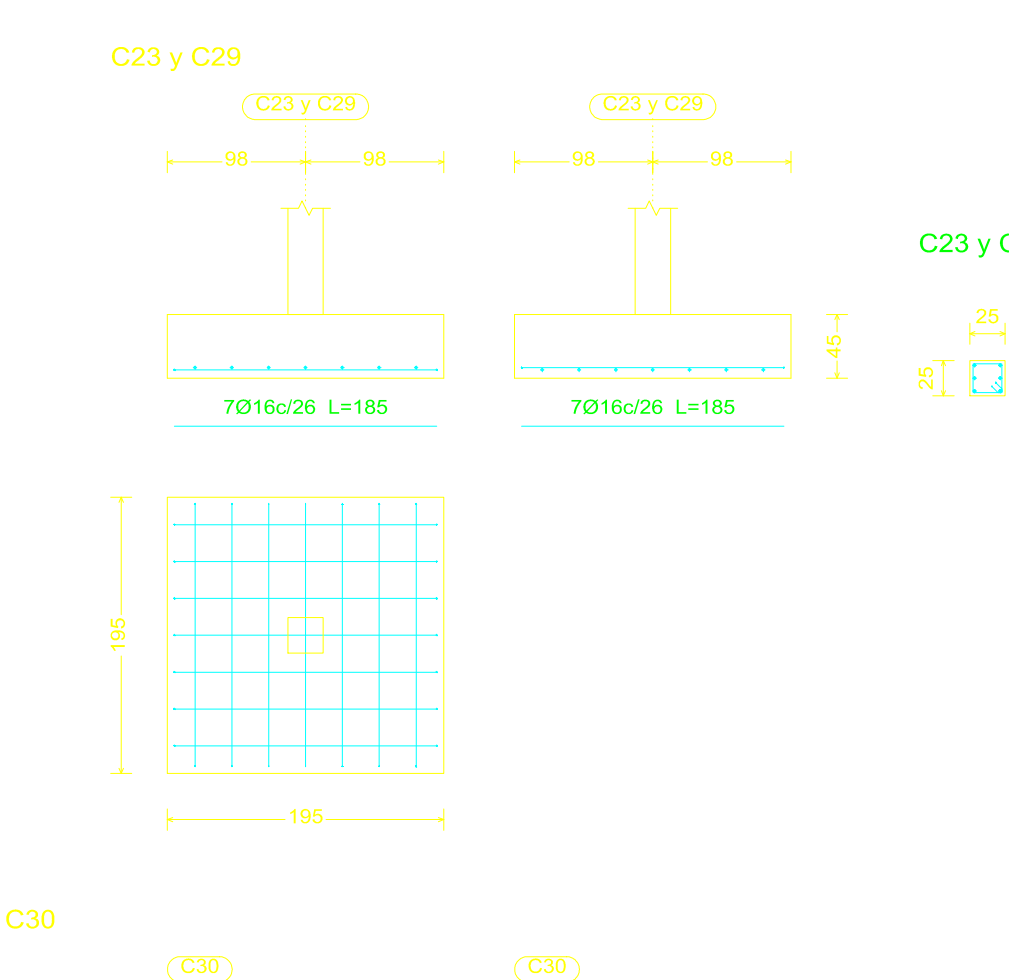
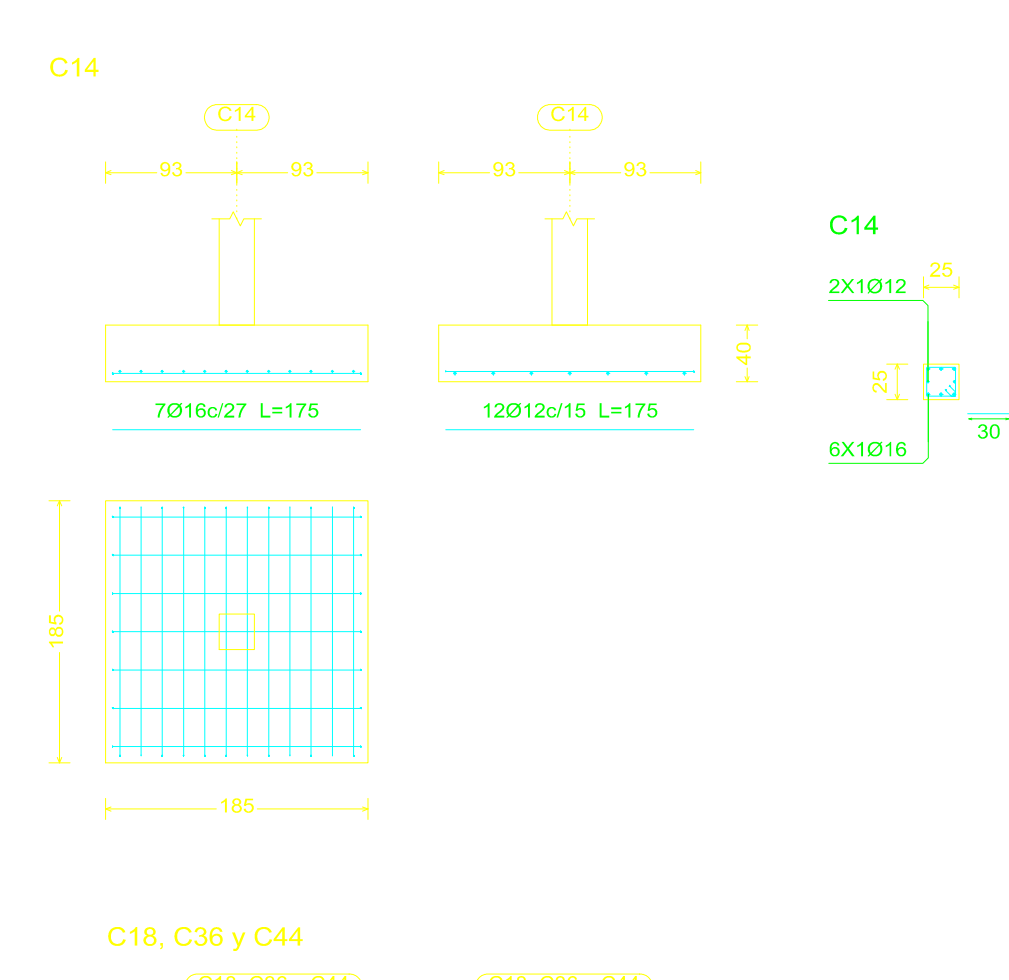
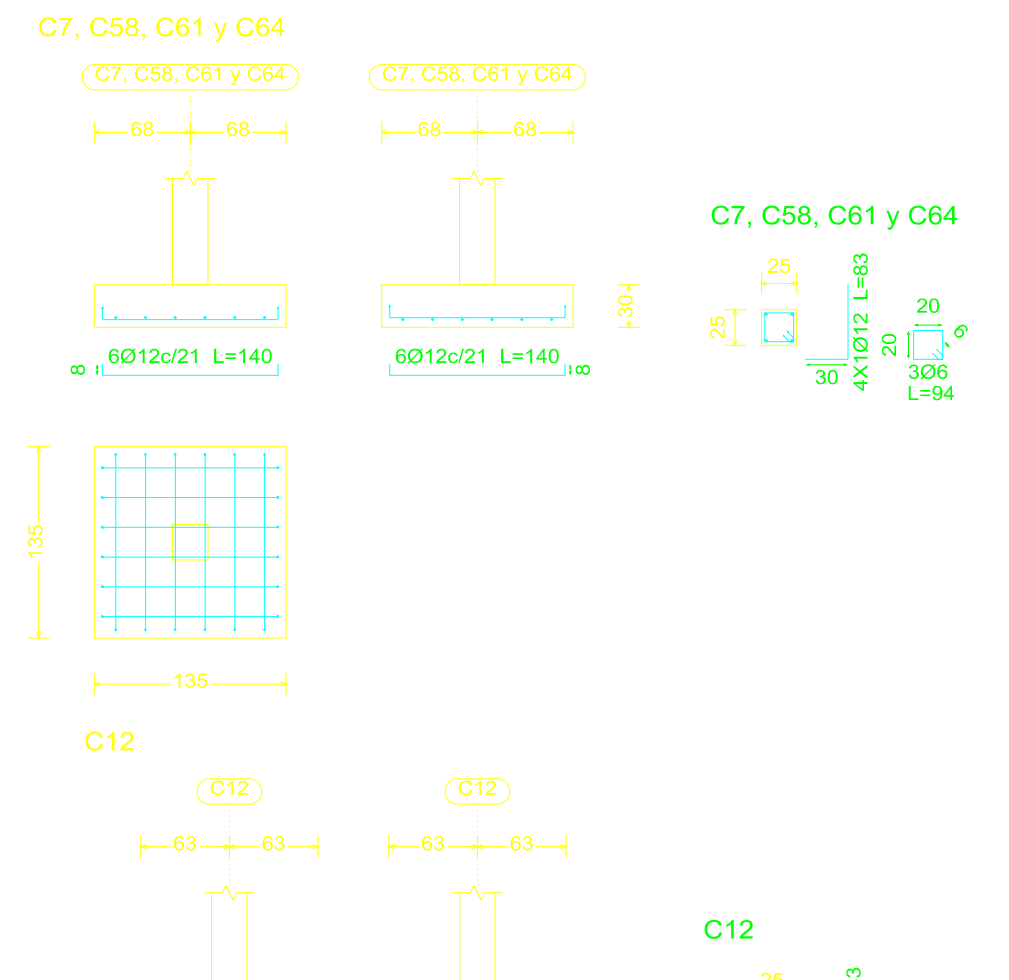
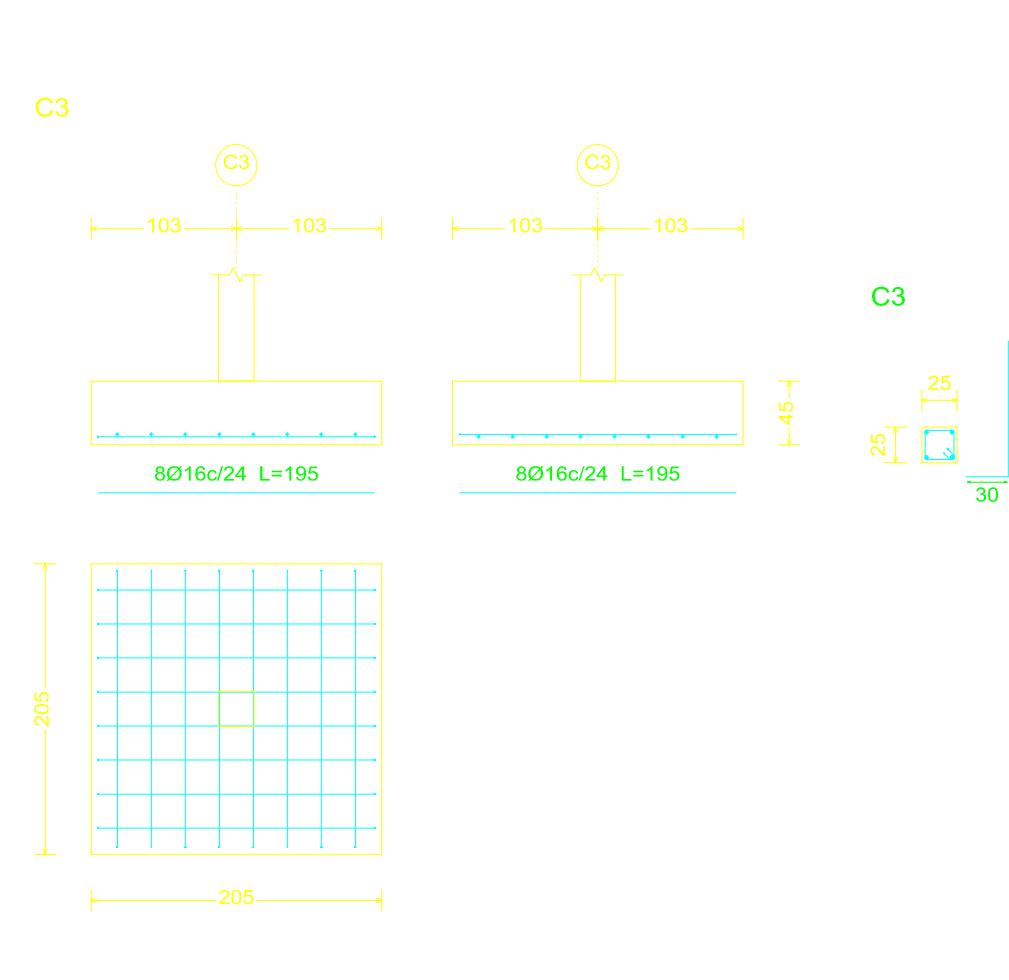


Resumen Acero	Long. total (m)	Peso+10% (kg)	Total
Despiece cimentación AH-500CN	06	229.0	56
	012	1205.9	1178
	016	596.0	1036
	020	9.7	26
			2298

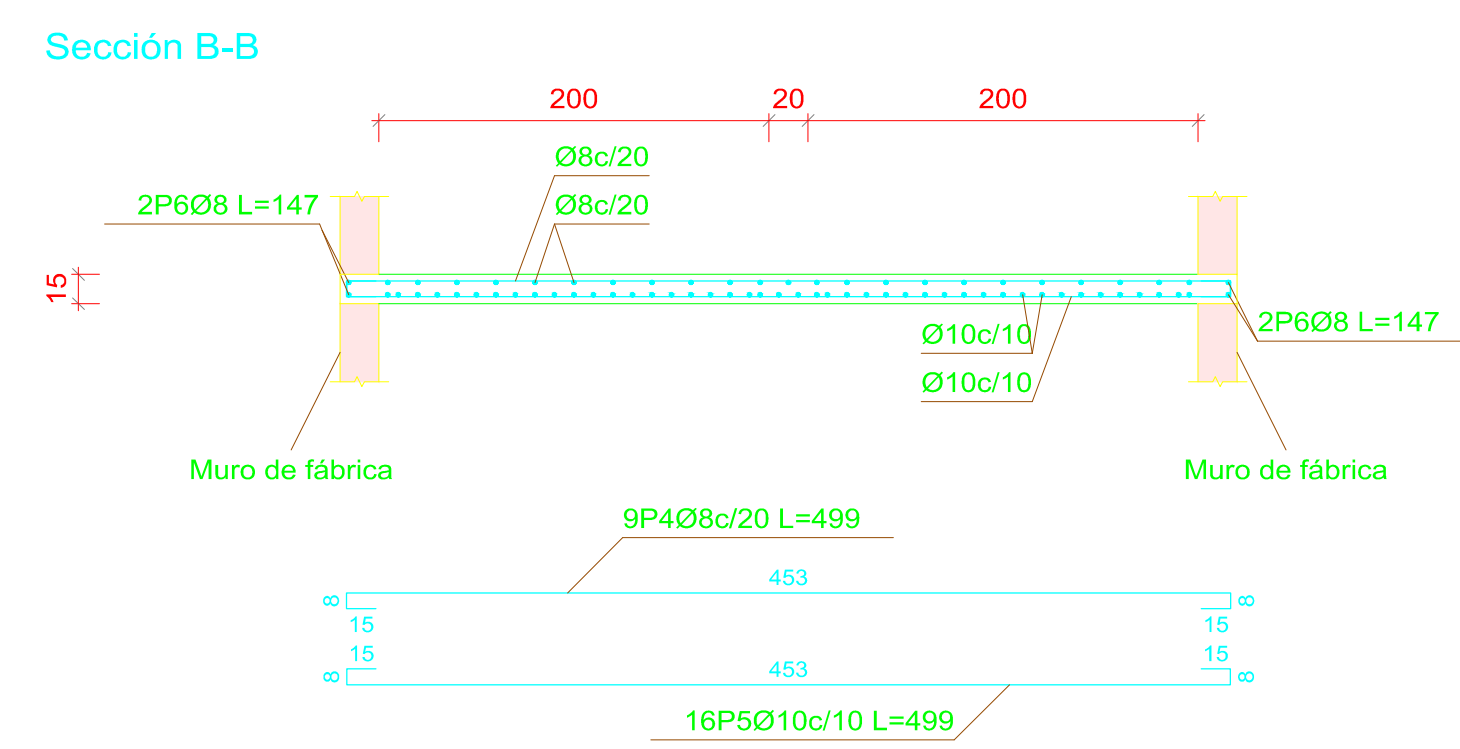
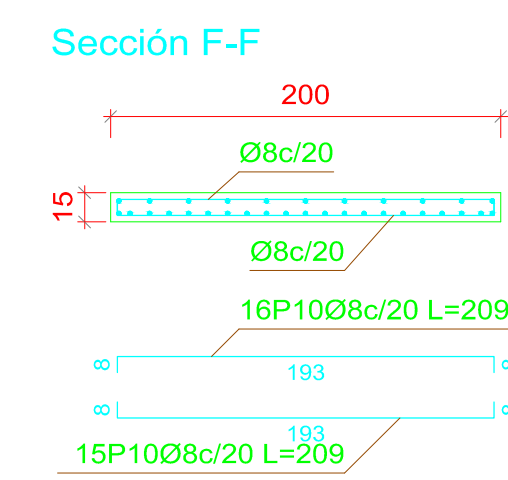
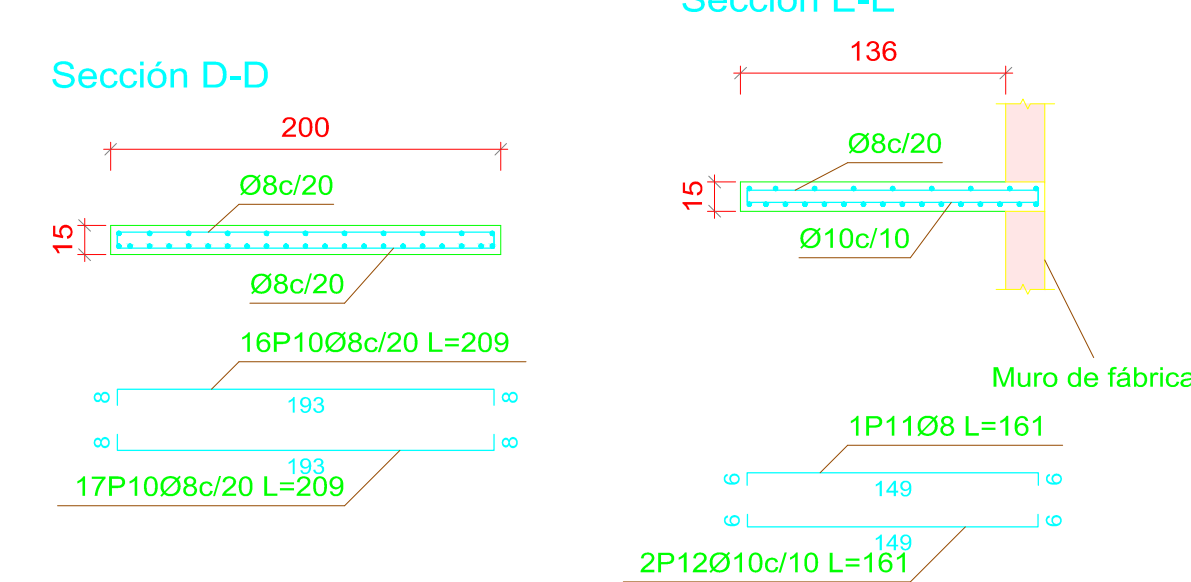
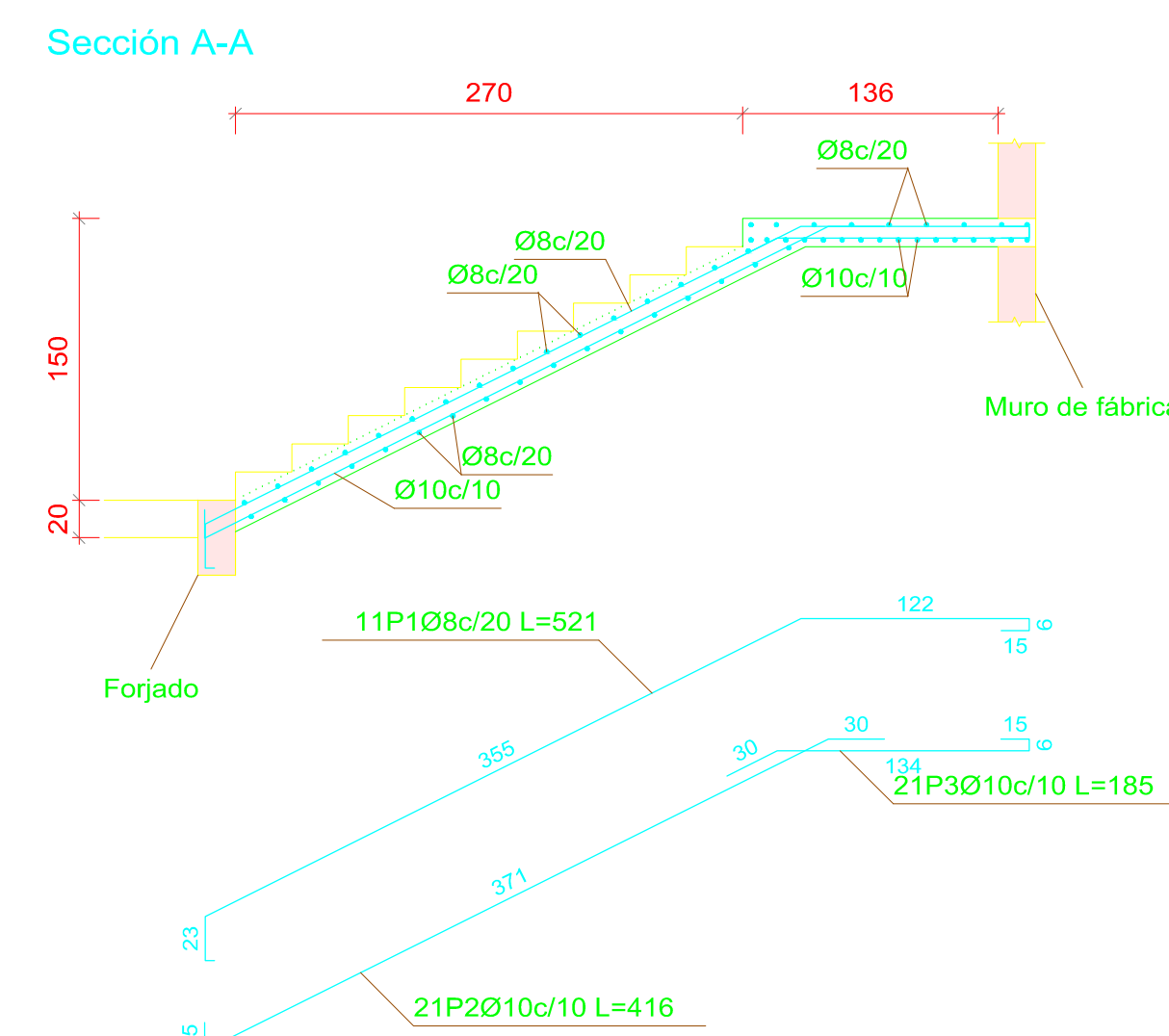
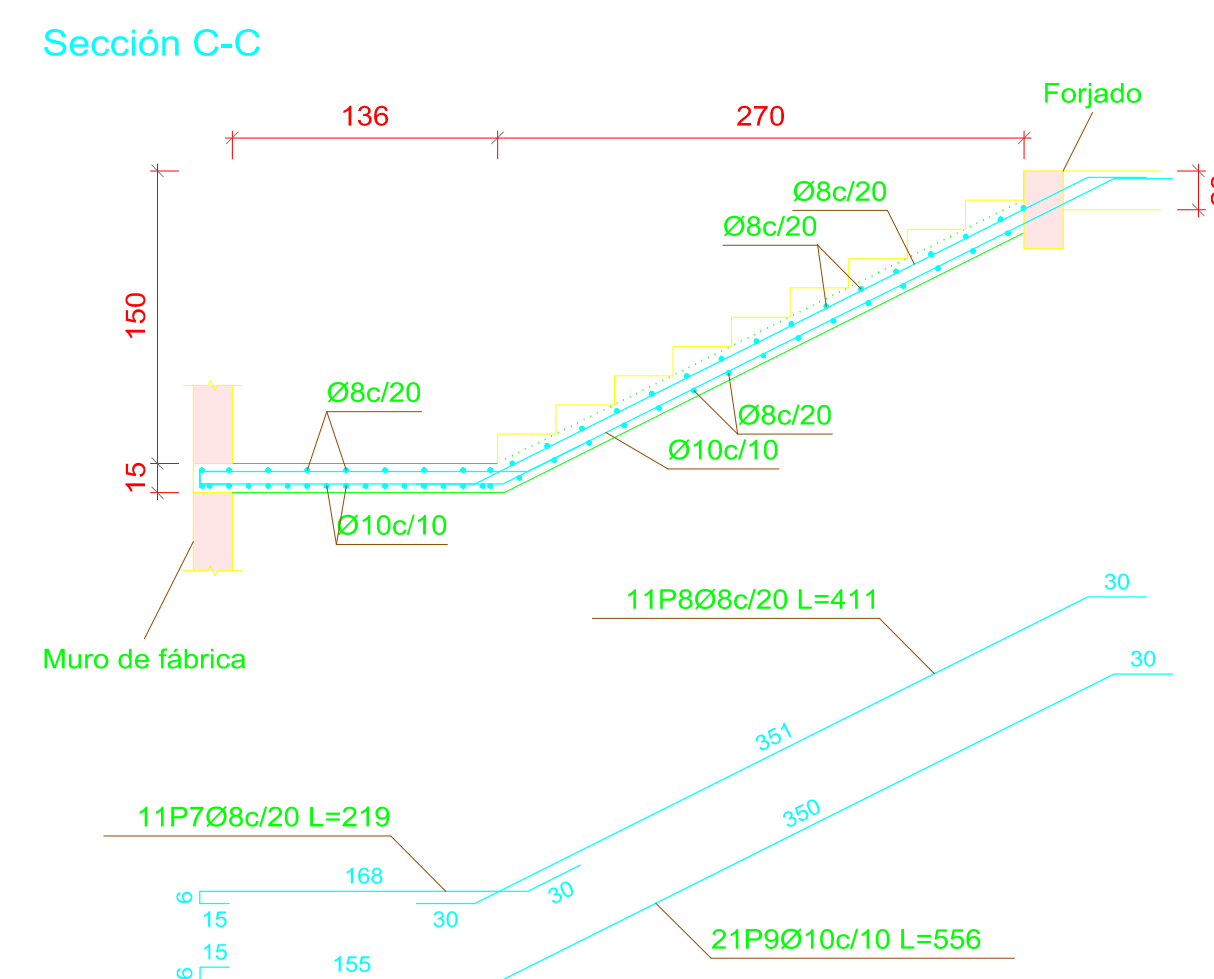
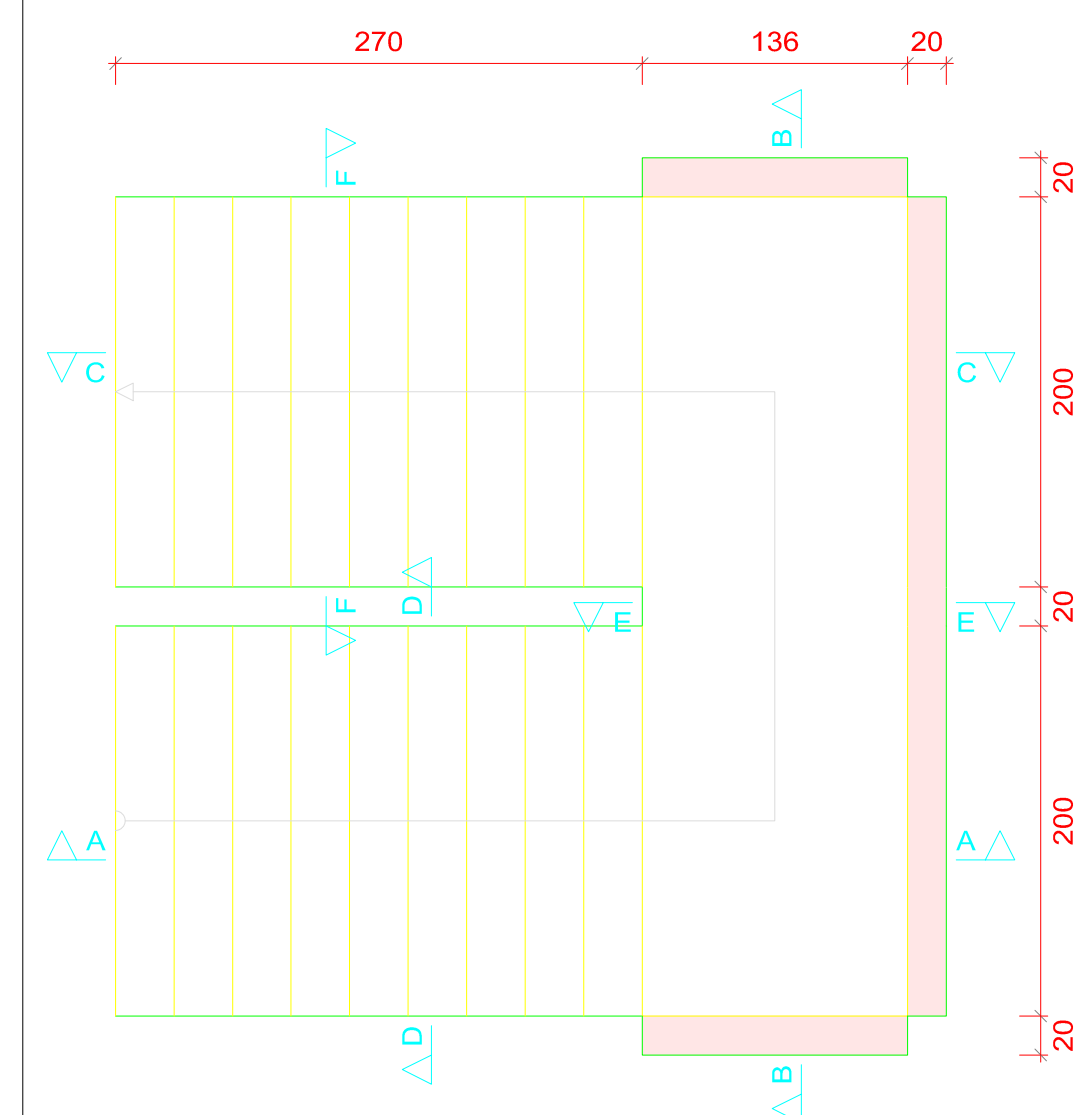


Resumen Acero	Long. total (m)	Peso+10% (kg)	Total
TRAMO PLANTA BAJF			
AH-500CN Ø8	312.8	136	
Ø10	326.0	221	357

Elemento	Pos.	Díam.	No.	Long. (cm)	Total AH-500CN (cm)	(kg)
TRAMO PLANTA BAJF-TRAMO PLANTABAJA						
1	Ø8	11	521	5731	22.6	
2	Ø10	21	419	9739	53.9	
3	Ø10	21	185	3855	24.0	
4	Ø8	9	499	4491	17.7	
5	Ø10	16	499	7854	49.2	
6	Ø8	4	147	588	2.3	
7	Ø8	11	219	2409	9.5	
8	Ø8	11	411	4521	17.8	
9	Ø10	21	556	11676	72.0	
10	Ø8	64	259	13376	52.8	
11	Ø8	1	161	161	0.6	
12	Ø10	2	161	322	2.0	
Total+10%						356.8
Ø8						135.6
Ø10						221.2
Total						356.8

TRAMO PLANTA BAJA

TRAMO PLANTABAJA	
Geometría	
Ámbito	2,000 m
Espesor	0,15 m
Huella	0,300 m
Contrahuella	0,150 m
Desnivel que salva	3,00 m
Nº de escalones	20
Planta final	AZOTEA
Planta inicial	SEGUNDO PISO
Peso propio	0,375 t/m ²
Cargas	
Peldañeado (Hormigonado con la losa)	0,168 t/m ²
Solado	0,100 t/m ²
Barandillas	0,300 t/m
Sobrecarga de uso	0,400 t/m ²
Materiales	
Hormigón	H-25 , Control Normal
Acero	AH-500 , Control Normal
Rec. geométrico	3,0 cm



Escala 1:50



UNIVERSIDAD AUTONOMA "JUAN MISAEL SARACHO"
FACULTAD DE CIENCIAS Y TECNOLOGIA



DISEÑO ESTRUCTURAL
UNIDAD EDUCATIVA 6 DE
JUNIO

CONTENIDO:
PLANO ARQUITECTÓNICO

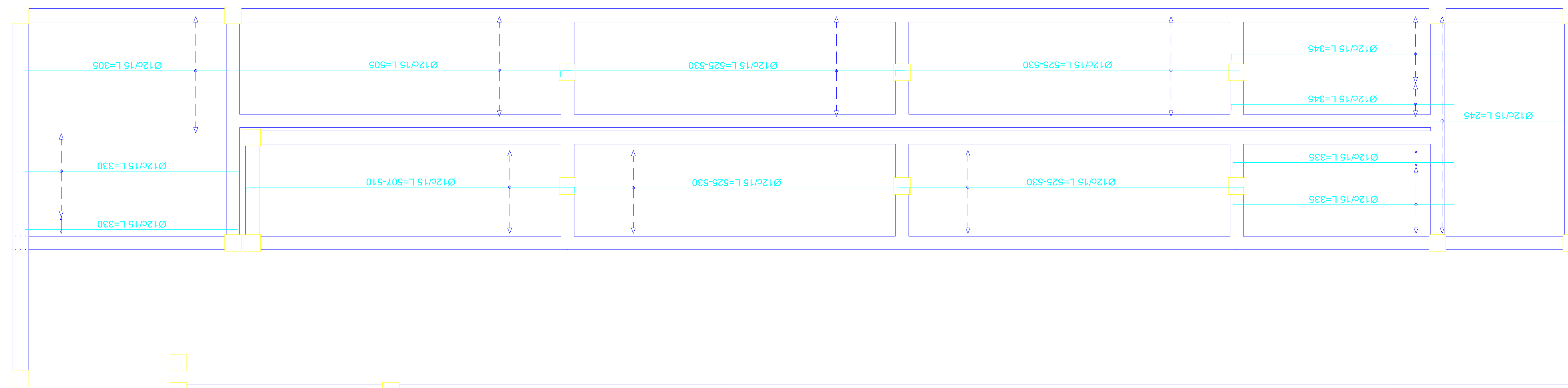
UNIVERSITARIO:
UNIV. MIHAEL FRANCO MARTINEZ POVEDA

ESCALA:
1:50

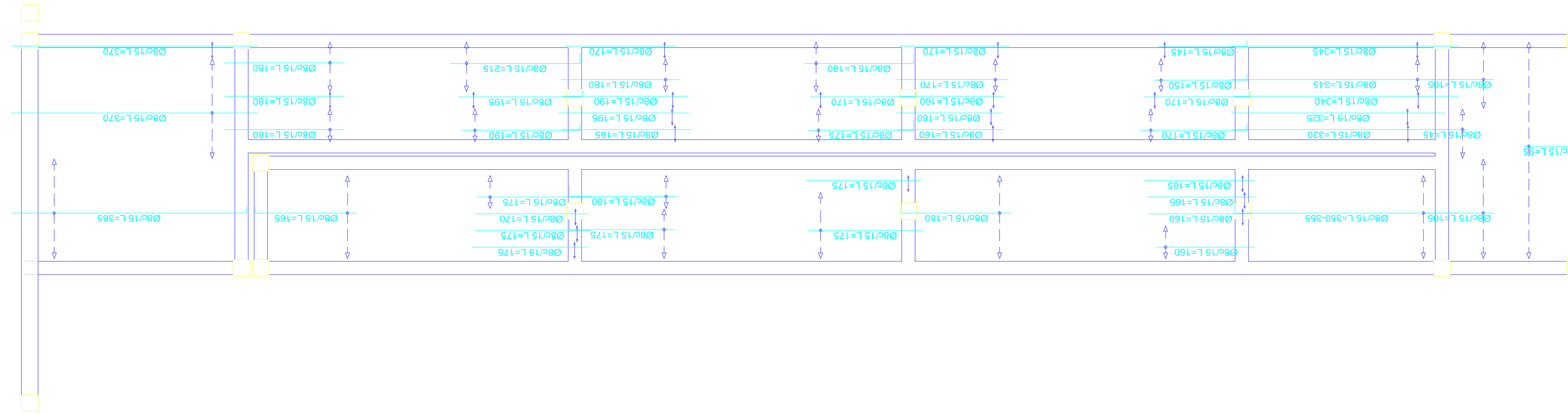
LAMINA:
10/11

VoBo

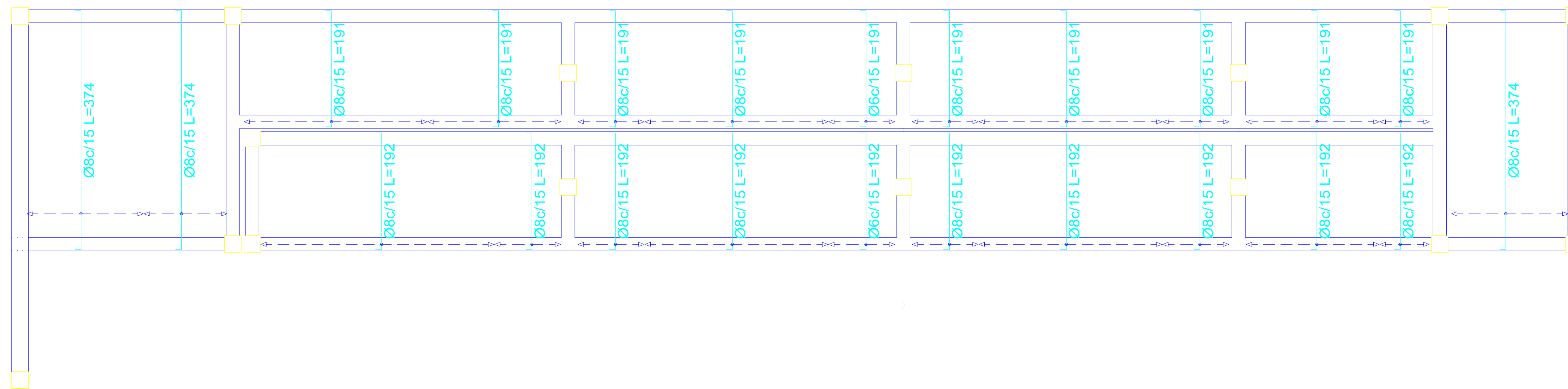
FECHA:
OCTUBRE/2018



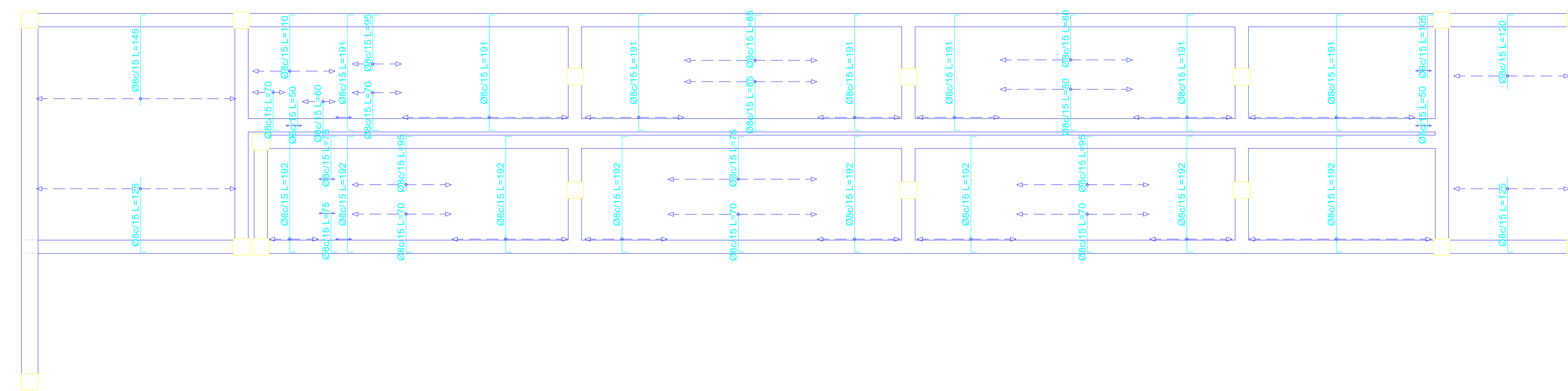
Resumen Acero PRIMER PISO			
Armadura Longitudinal inferior			
AH-500CN	Ø12	Long. total (m)	Peso+10% (kg)
		491.2	480



Resumen Acero PRIMER PISO			
Armadura longitudinal superior			
AH-500CN	Ø8	Long. total (m)	Peso+10% (kg)
		412.4	179



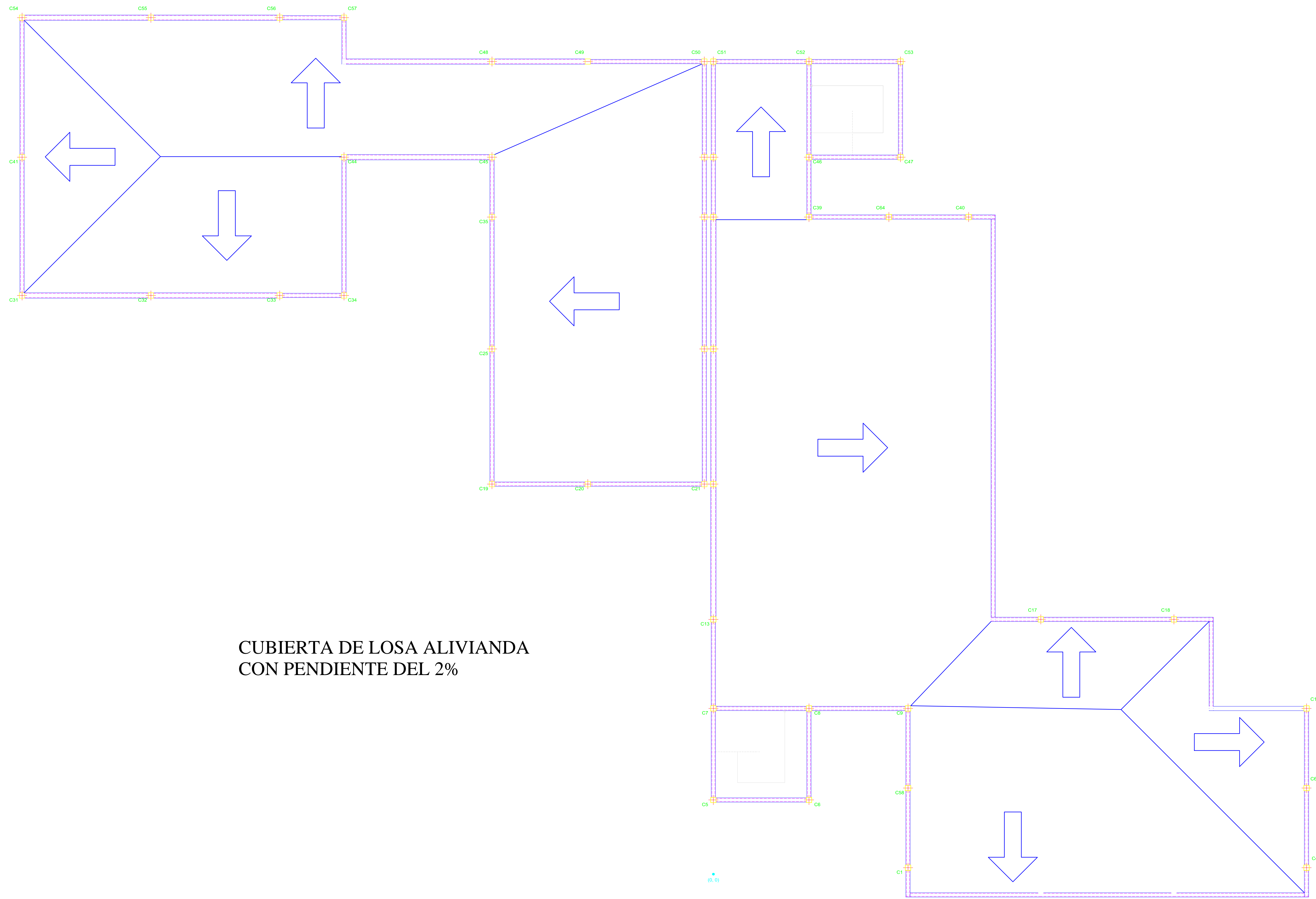
Resumen Acero PRIMER PISO				
Armadura longitudinal inferior				
AH-500CN	Ø6 Ø8	Long. total (m)	Peso+10% (kg)	Total
		26.8	7	
		544.7	236	243





Resumen Acero PRIMER PISO			
Armadura transversal superior			
AH-500CN	Ø8	Long. total (m)	Peso+10% (kg)
		506.7	220

UNIVERSIDAD AUTONOMA "JUAN MISAEL SARACHO"
FACULTAD DE CIENCIAS Y TECNOLOGIA

DISEÑO ESTRUCTURAL UNIDAD EDUCATIVA 6 DE JUNIO		CONTENIDO: DISTRIBUCIÓN DE ARMADURA RAMPA	
UNIVERSITARIO: UNIV. MUHAEL FRANCO MARTINEZ POVEDA	ESCALA: 1:50	LAMINA: 11/11	
VoBo	FECHA: OCTUBRE/2018		



CUBIERTA DE LOSA ALIVIANDA
CON PENDIENTE DEL 2%

 UNIVERSIDAD AUTONOMA "JUAN MISAEL SARACHO" FACULTAD DE CIENCIAS Y TECNOLOGIA			
DISEÑO ESTRUCTURAL UNIDAD EDUCATIVA 6 DE JUNIO		CONTENIDO: CUBIERTA	
UNIVERSITARIO: UNIV. MIHAEL FRANCO MARTINEZ POVEDA		ESCALA: 1:50	LAMINA: 12/12
VoBo	FECHA: OCTUBRE/2018		