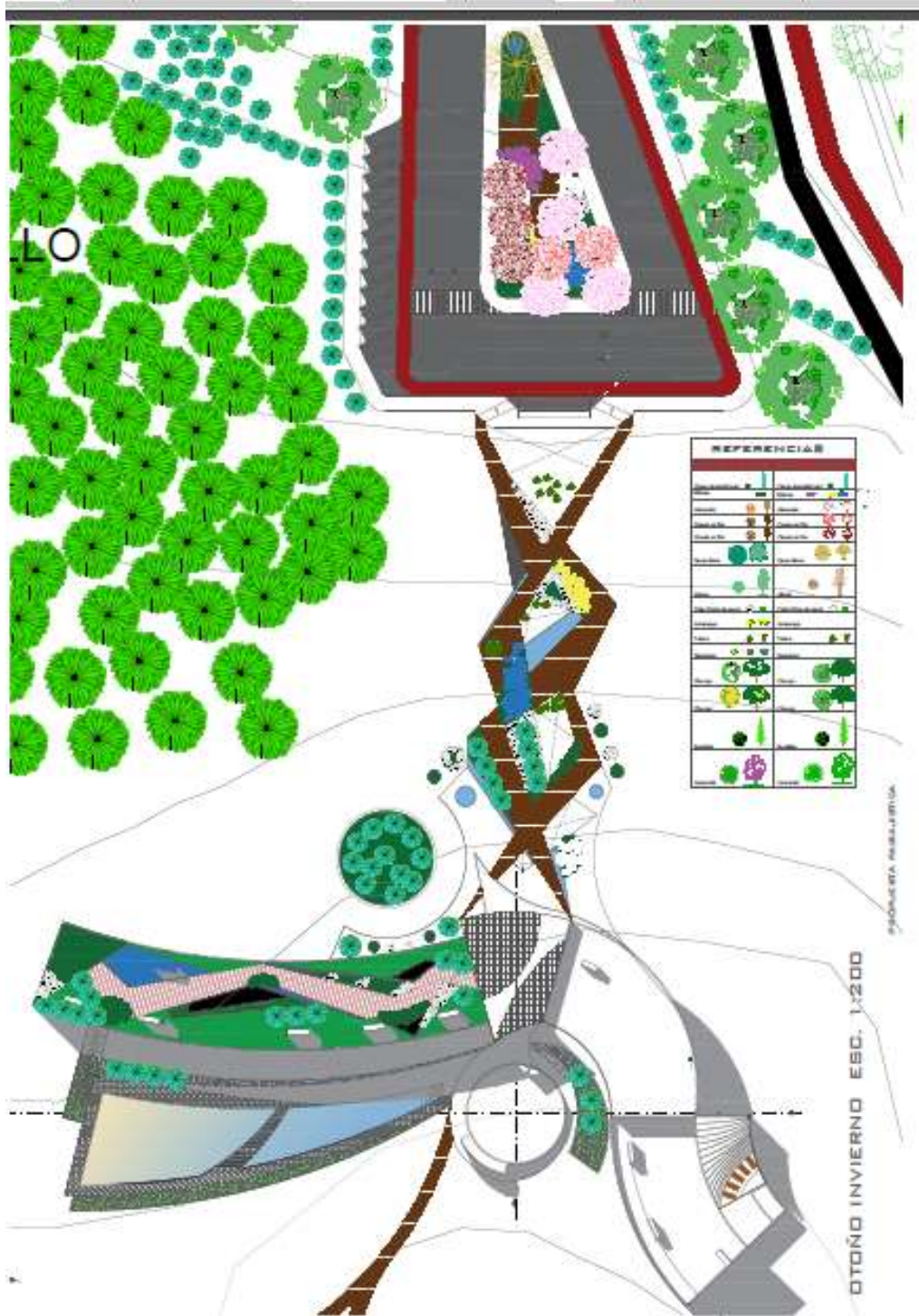


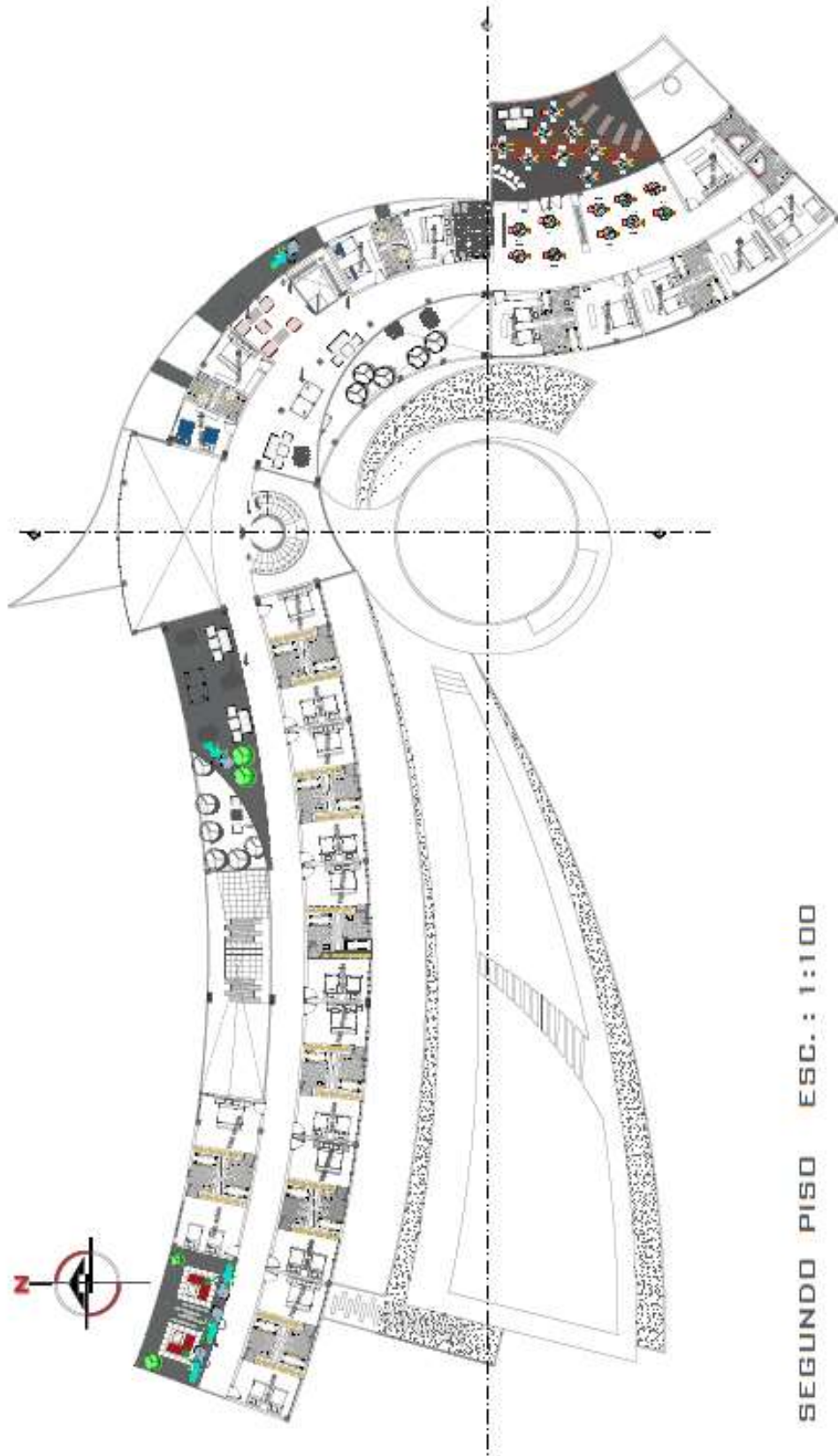
UNIDAD VII - PLANOS



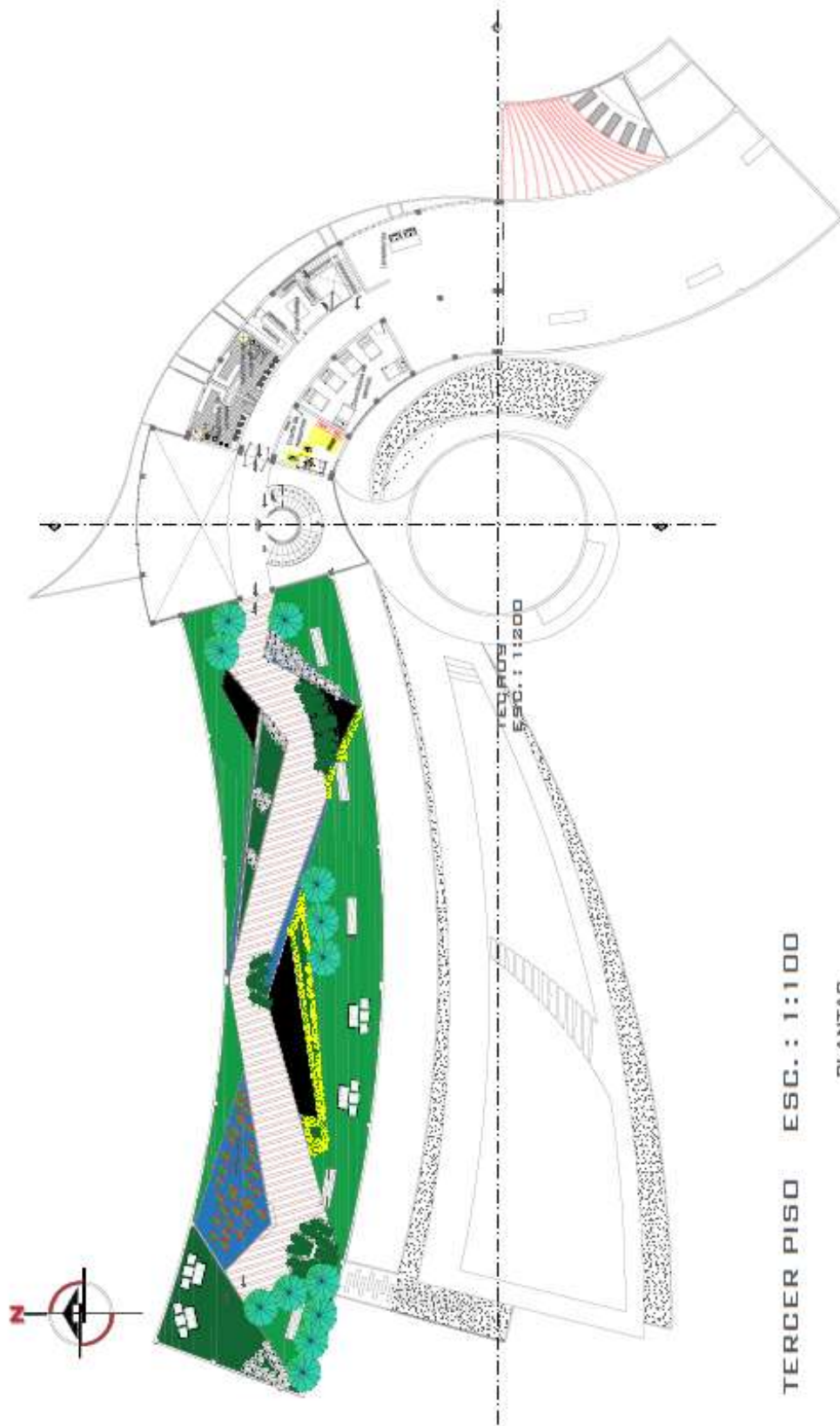


PRIMER PISO ESC.: 1:100

PLANTAS

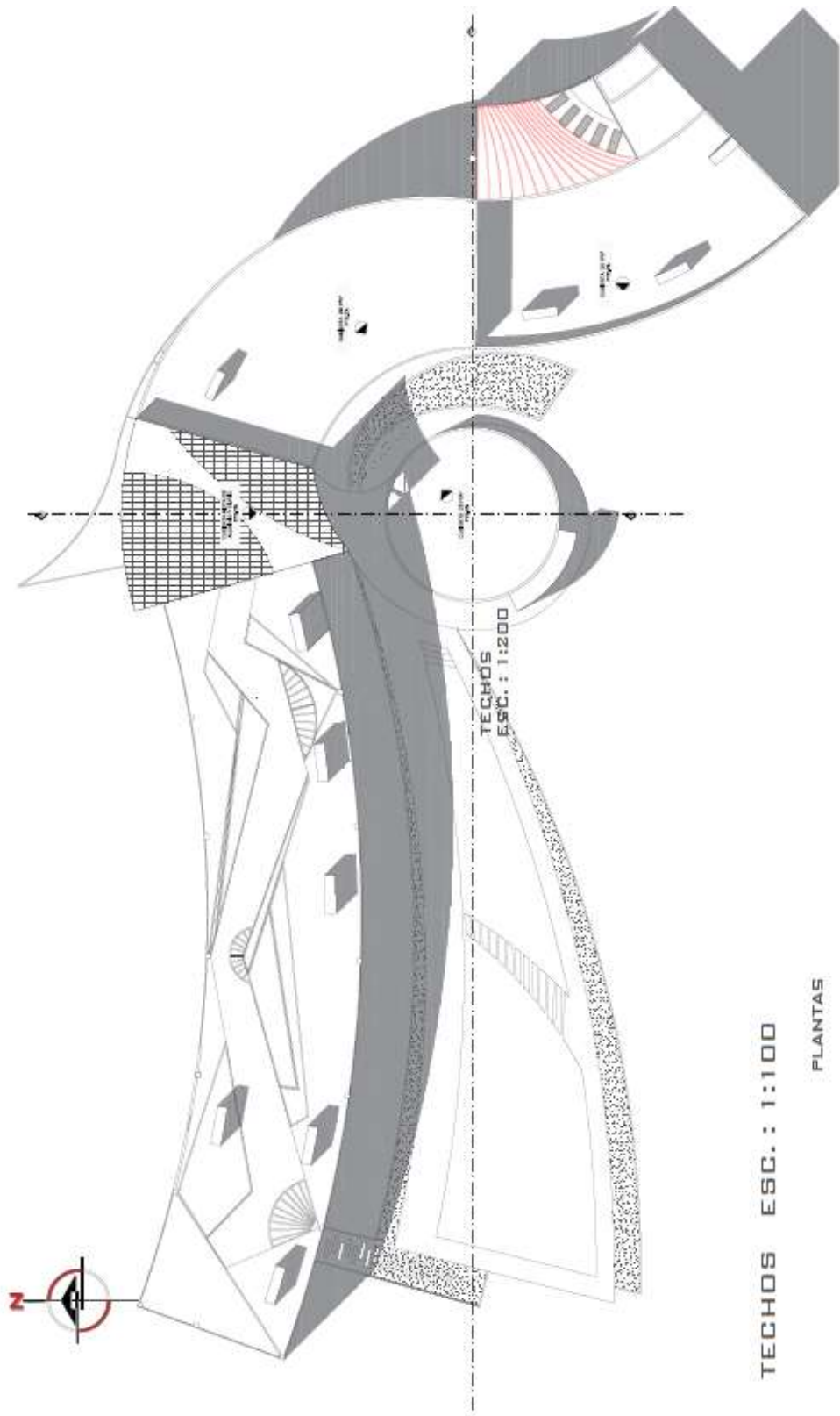


SEGUNDO PISO ESC.: 1:100



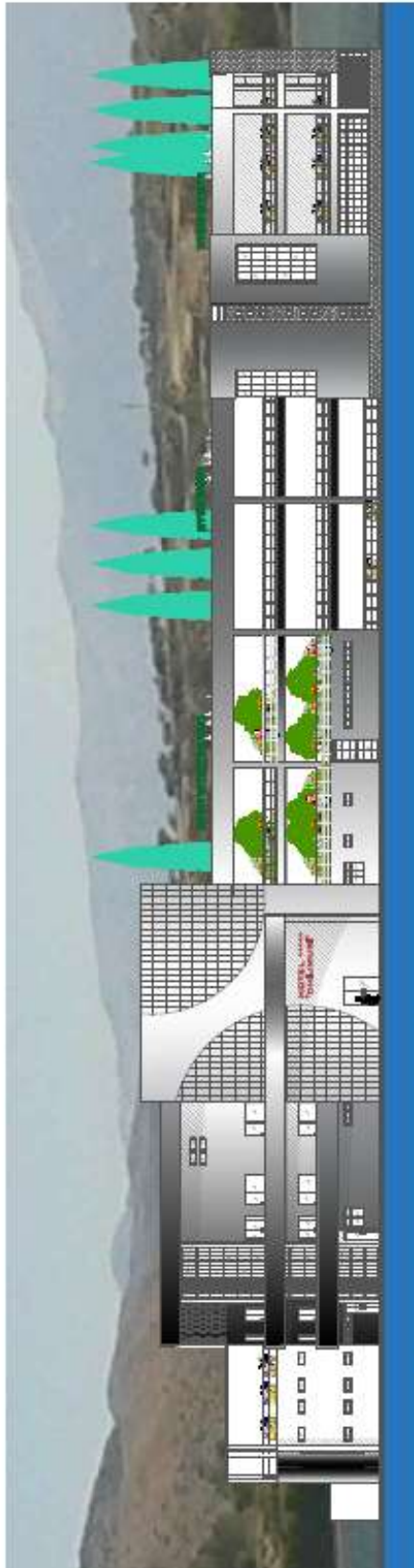
TERCER PISO ESC.: 1:100

PLANTAS

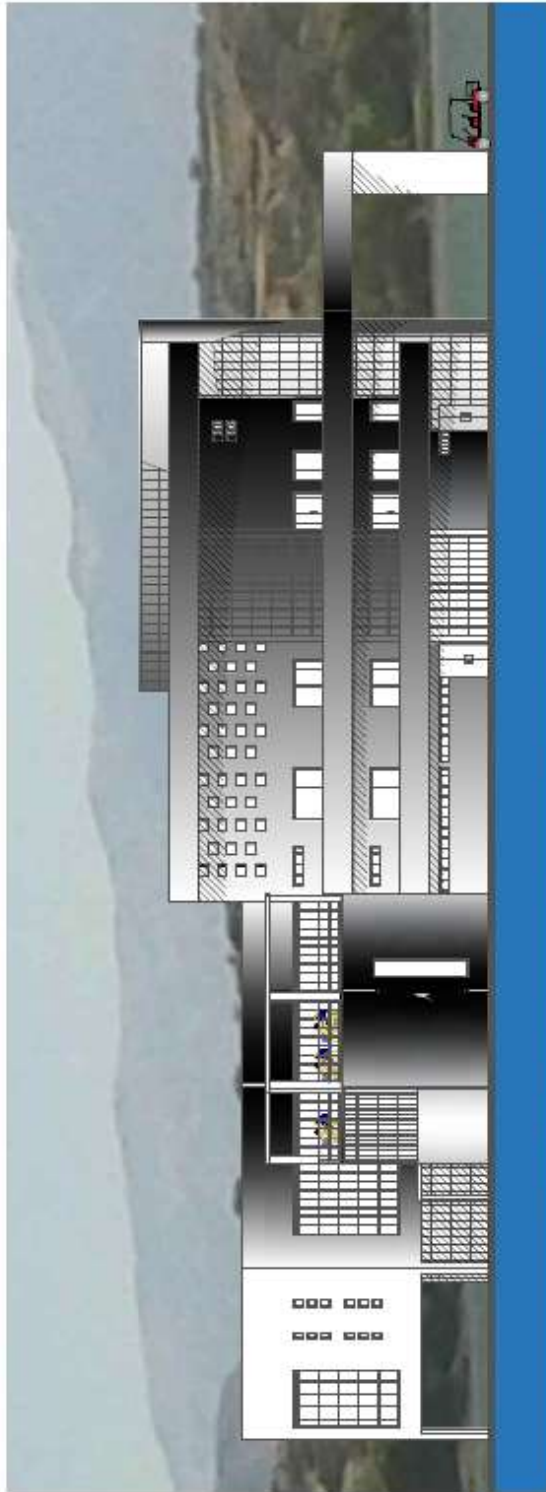


TECHOS ESC.: 1:100

PLANTAS



ELEVACION NORTE ESC.: 1:100



ELEVACION ESTE ESC. : 1:100



ELEVACION SUITE FLOTANTE
ESC. : 1:100



CORTE C-C' SUITE FLOTANTE
ESC. : 1:100



