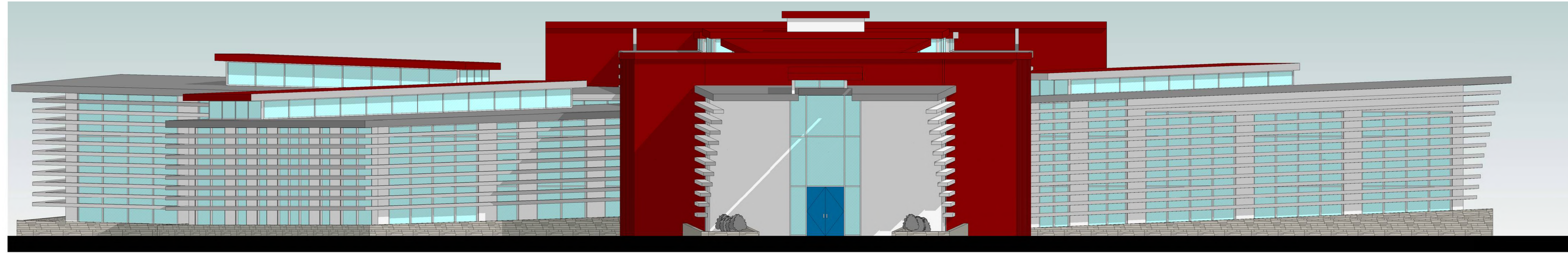


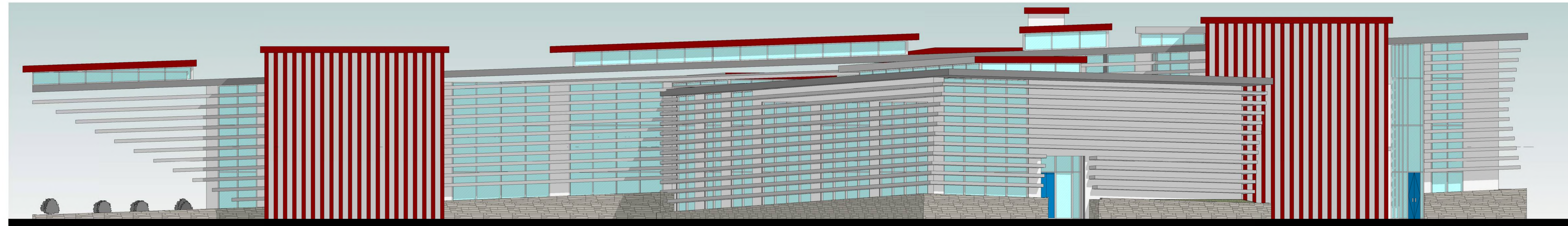
FACHADA PRINCIPAL

ESC 1:100



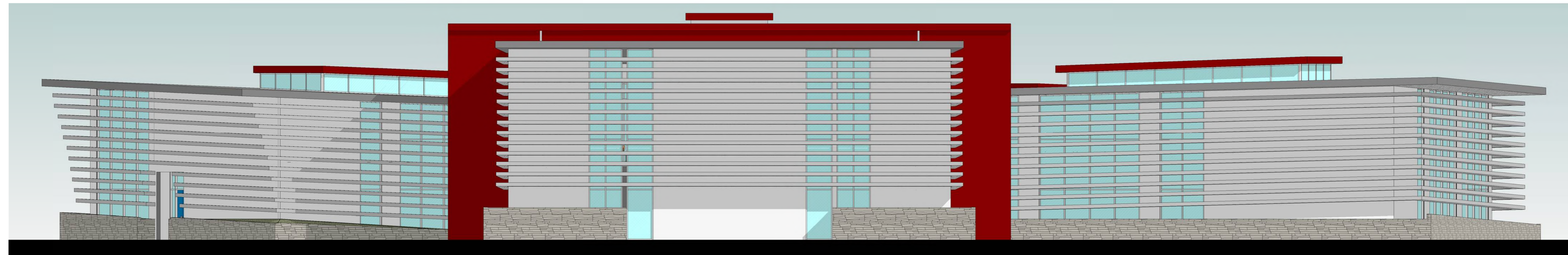
FACHADA LATERAL DERECHA

ESC 1:100



FACHADA POSTERIOR

ESC 1:100

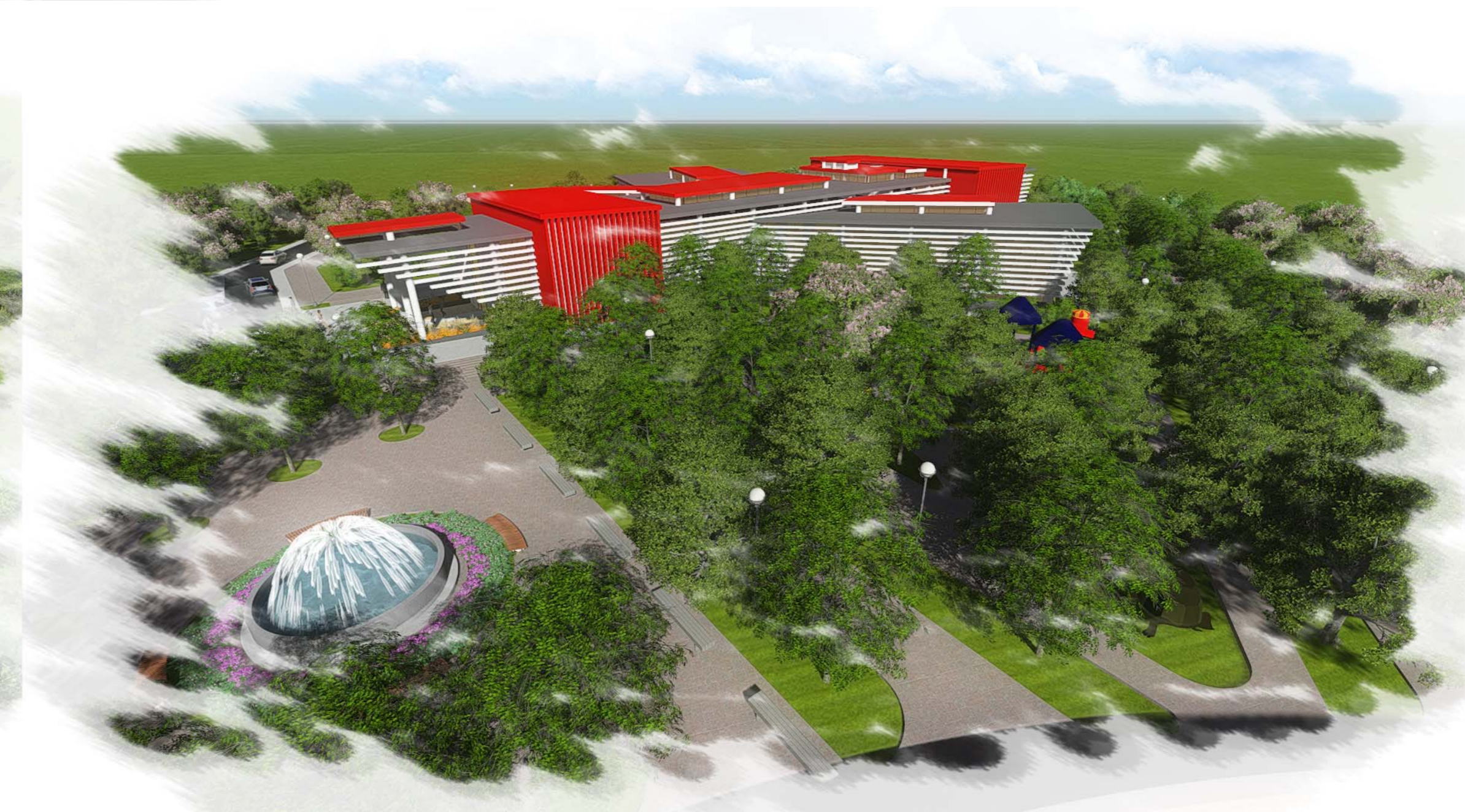
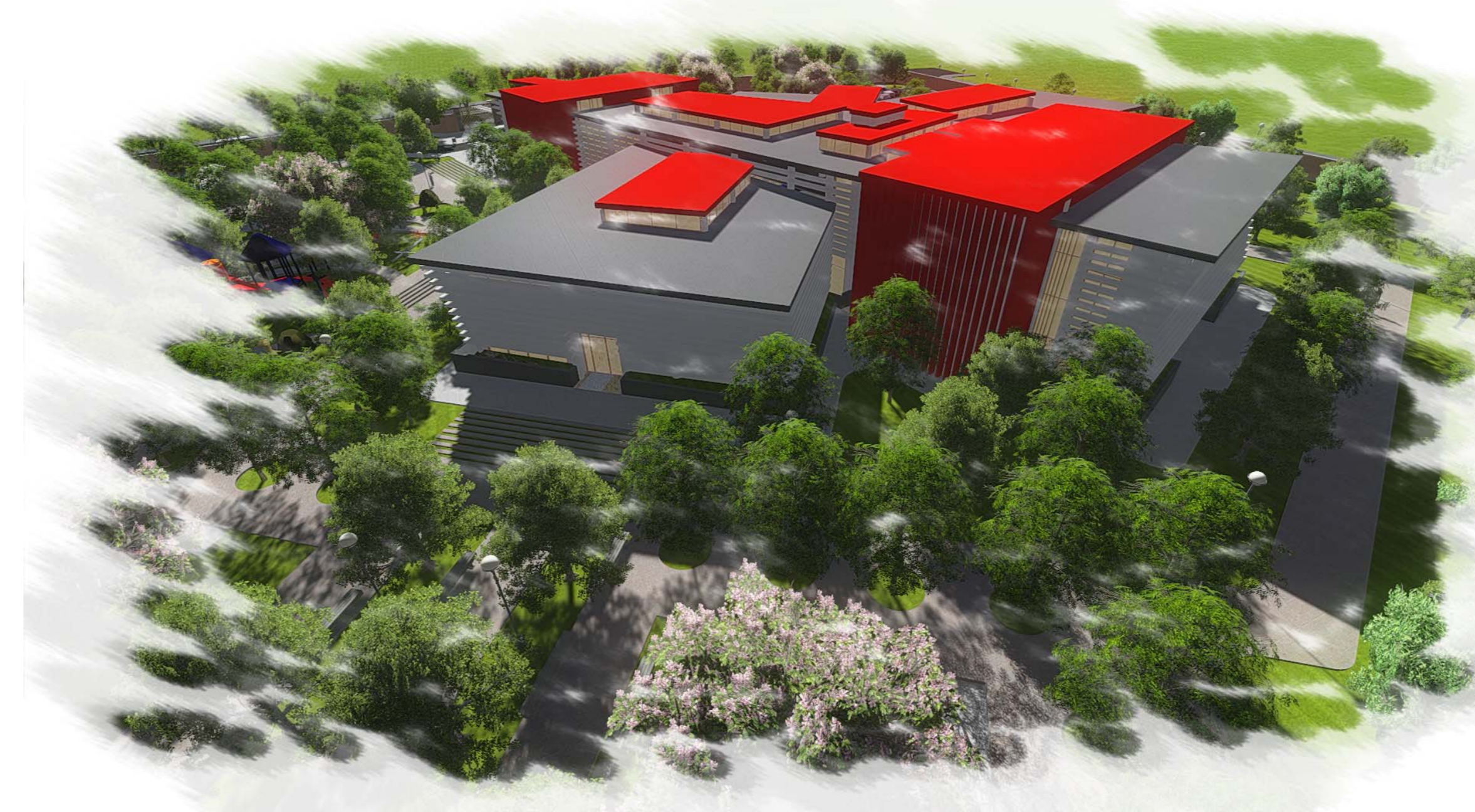
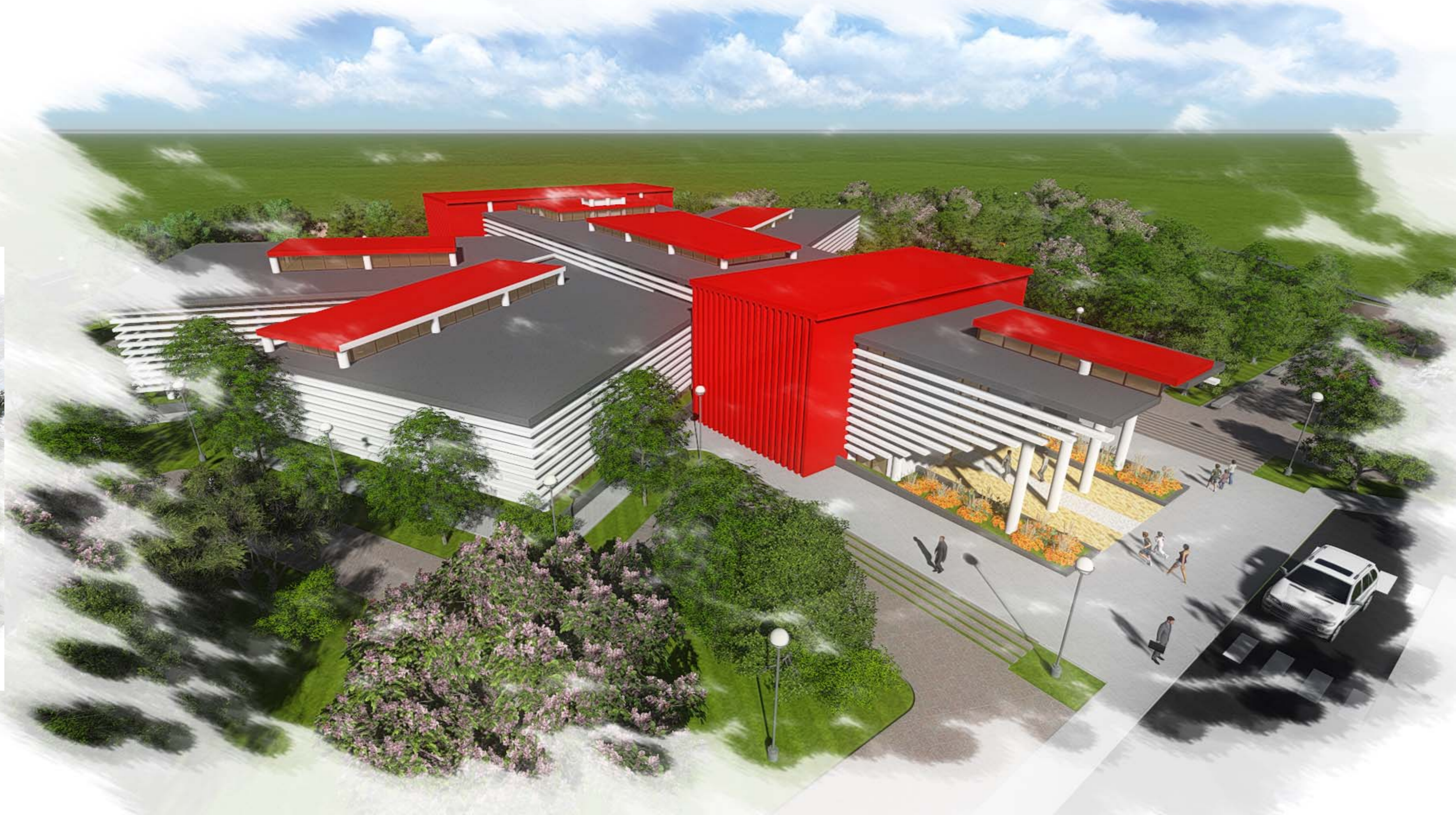
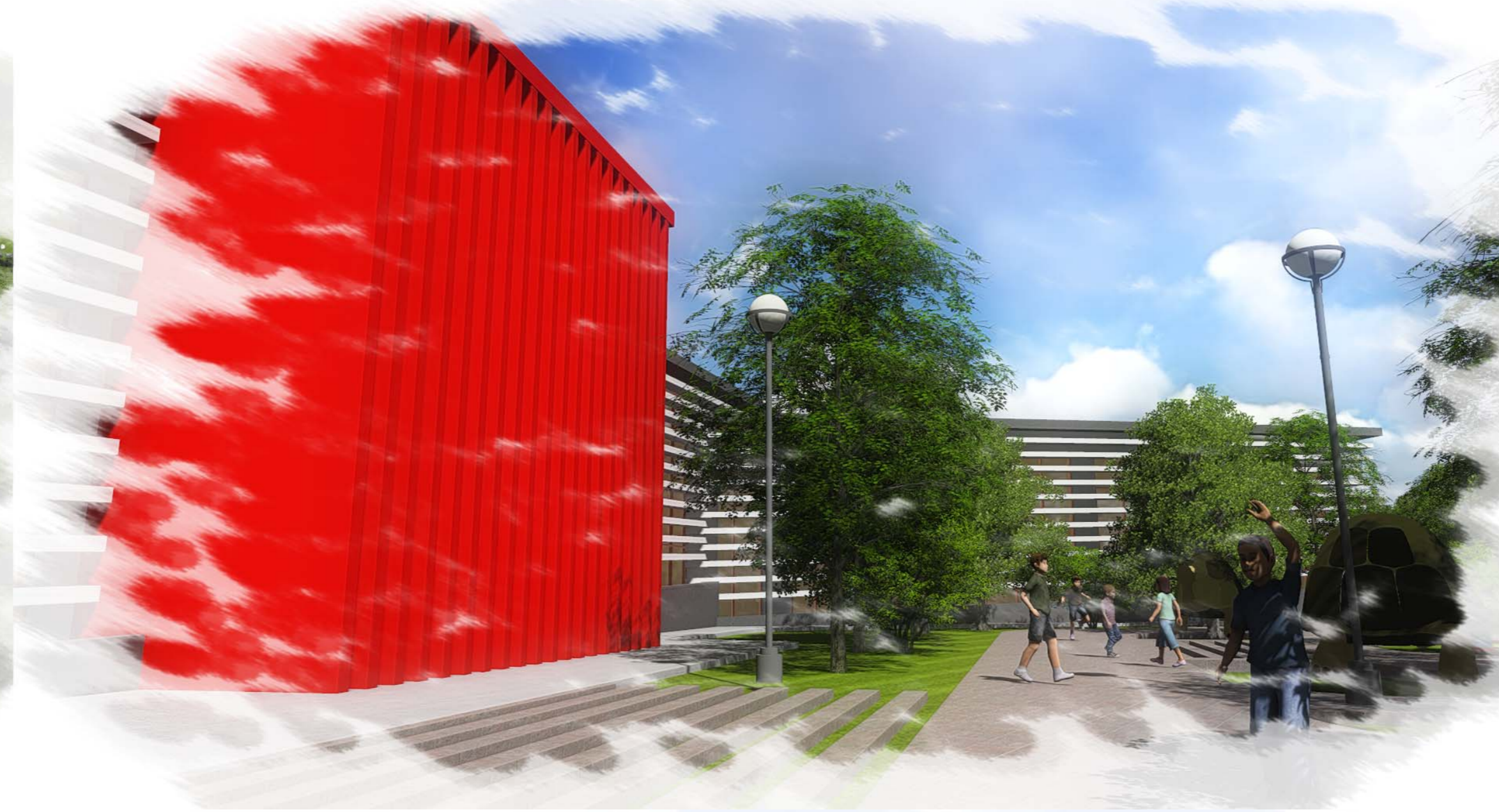


FACHADA LATERAL IZQUIERDA

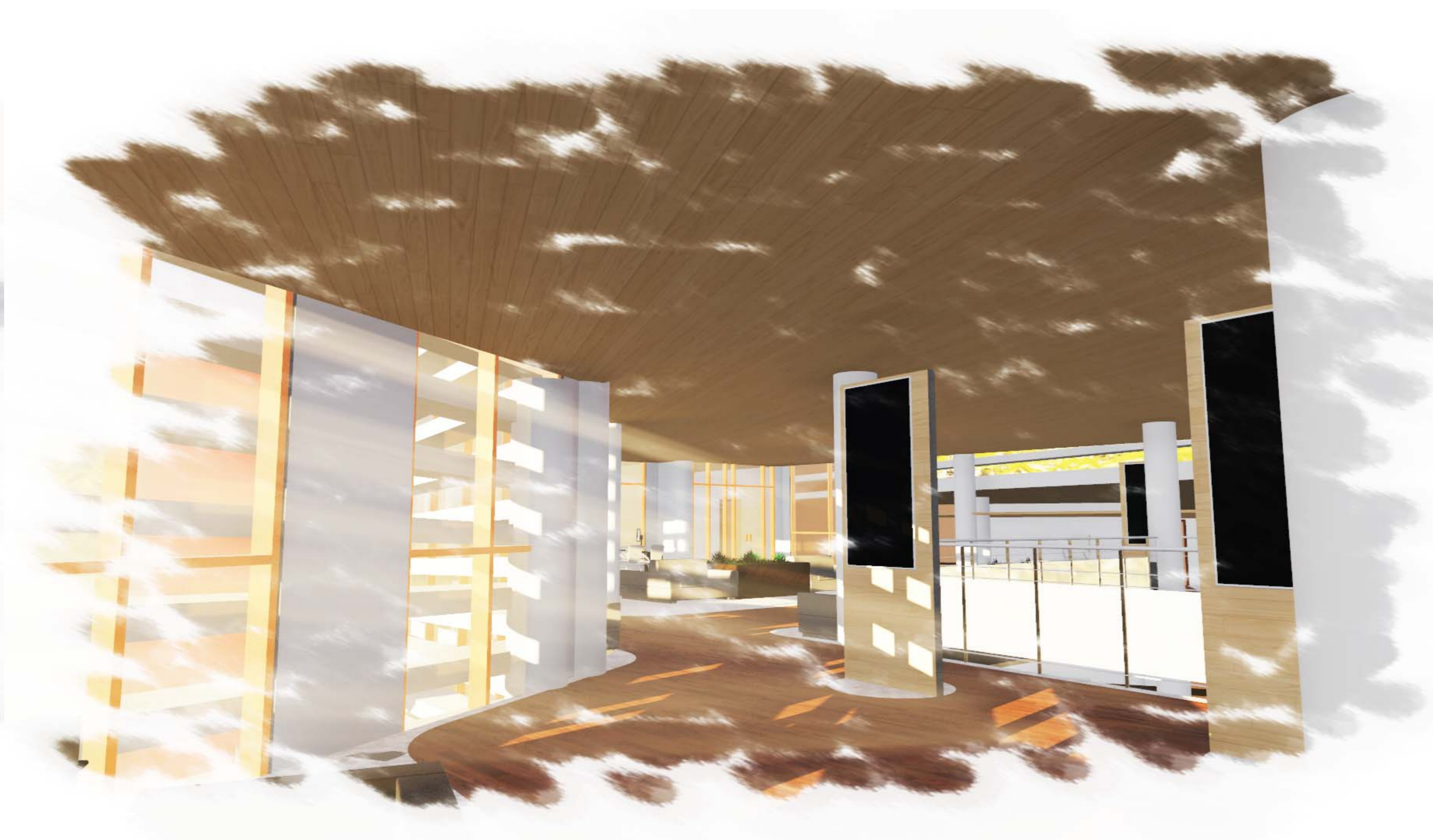
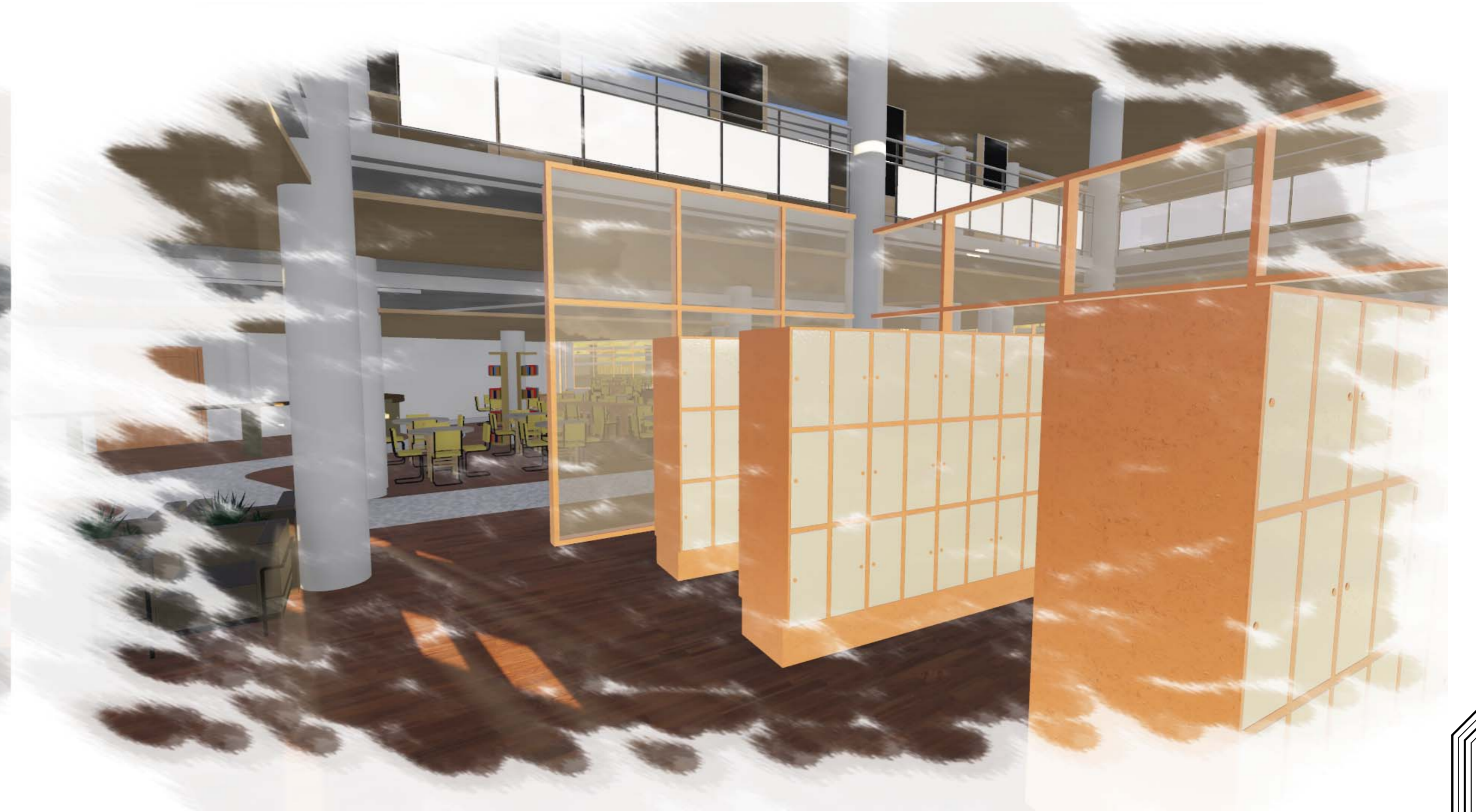
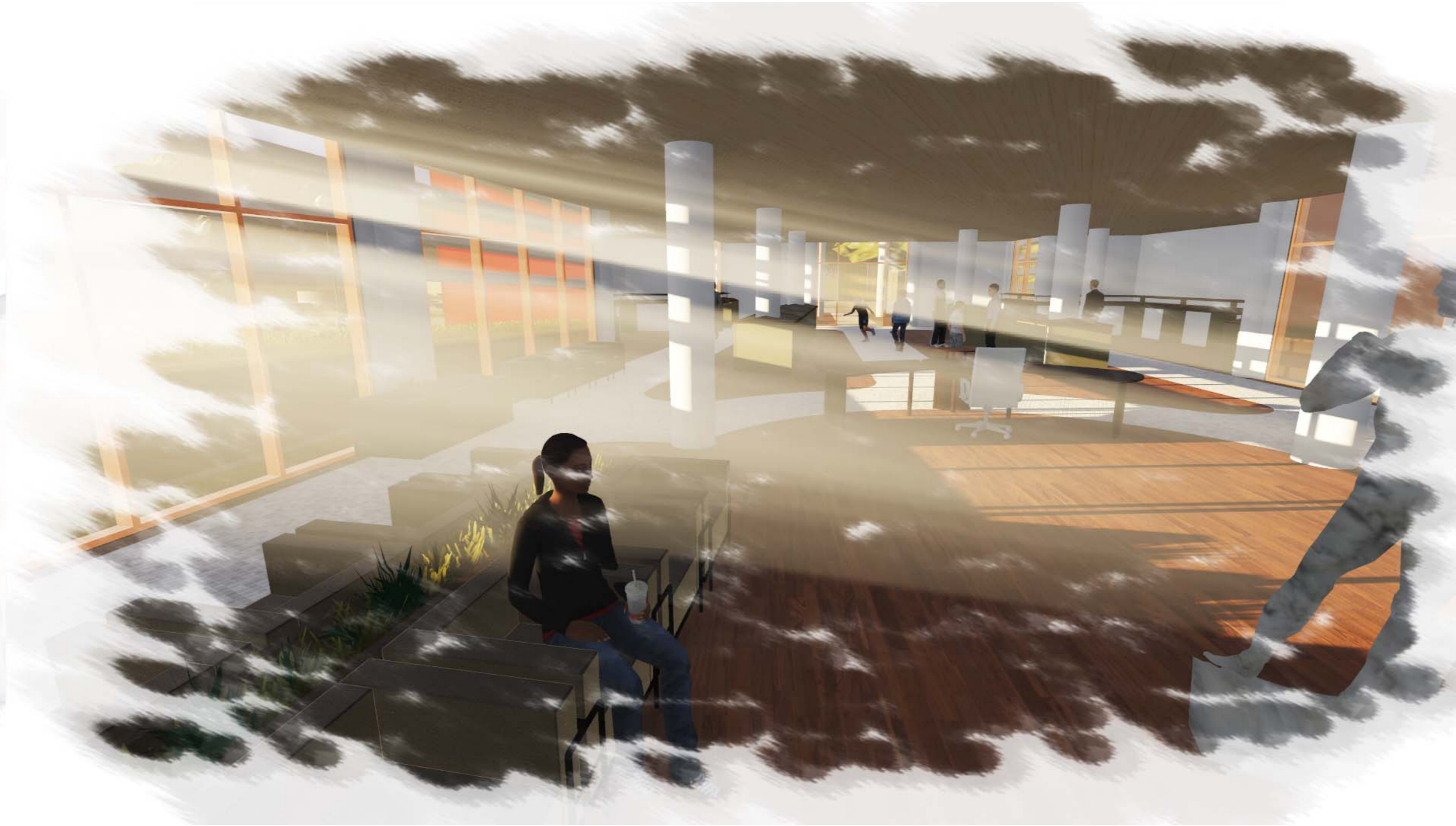
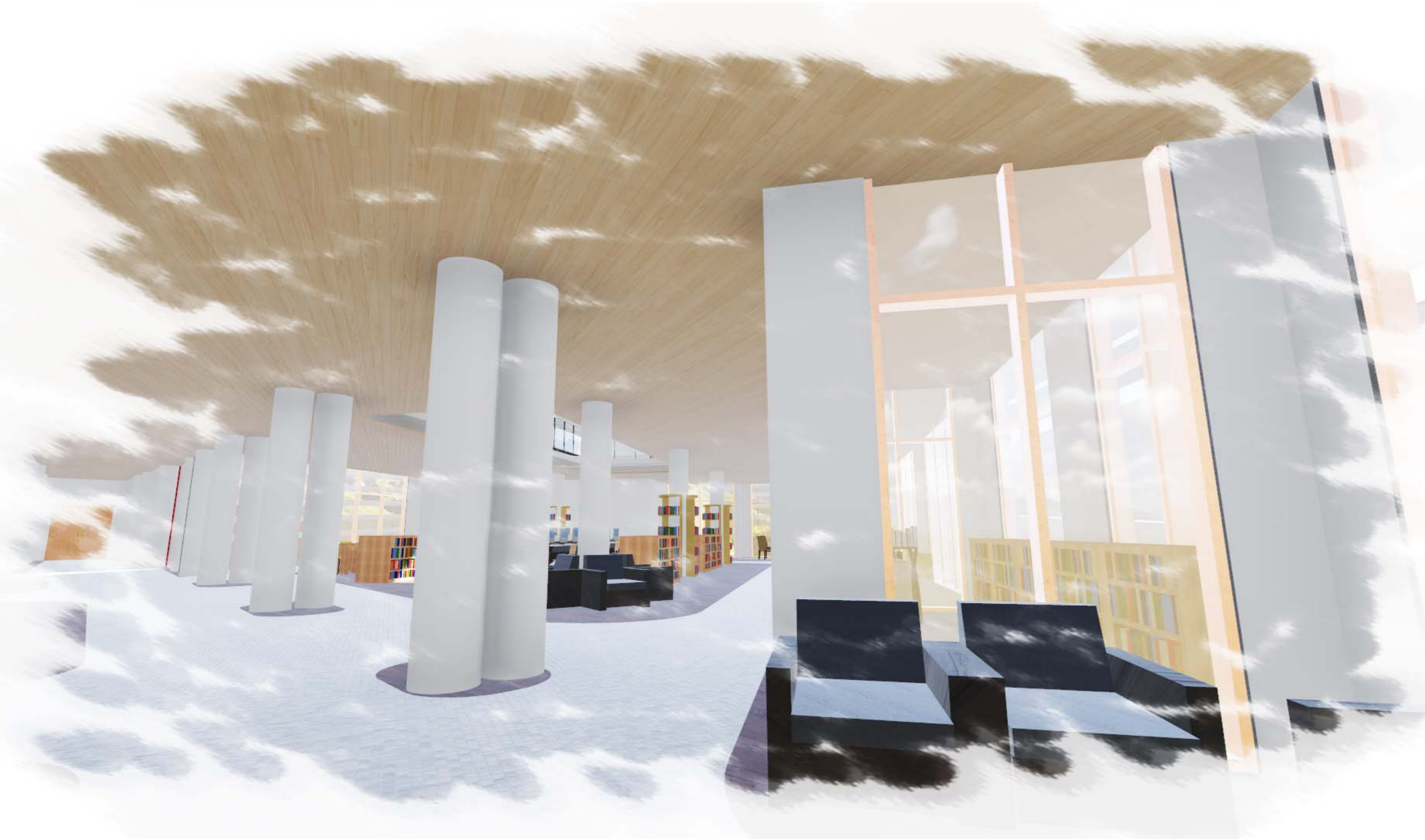
ESC 1:100



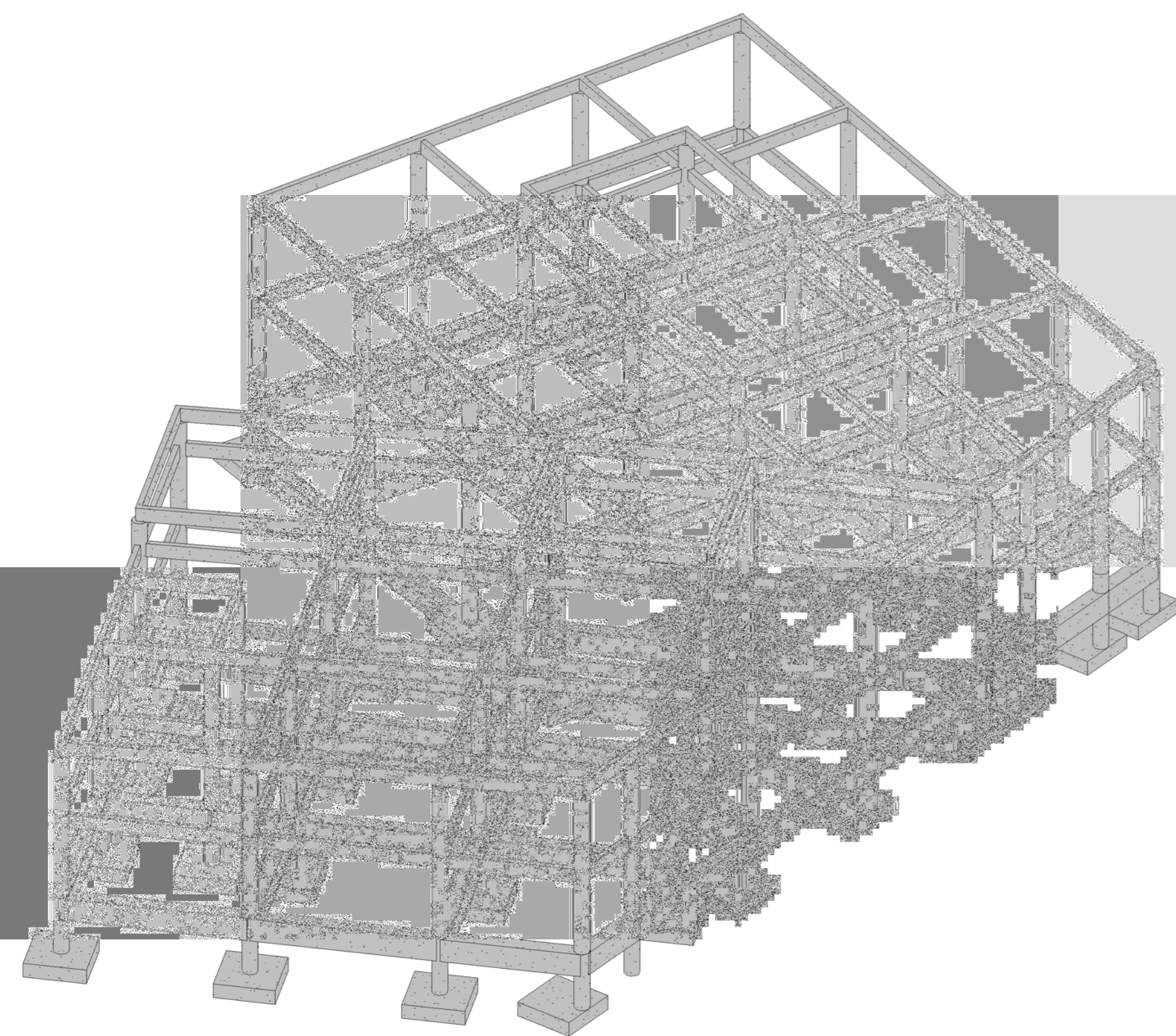
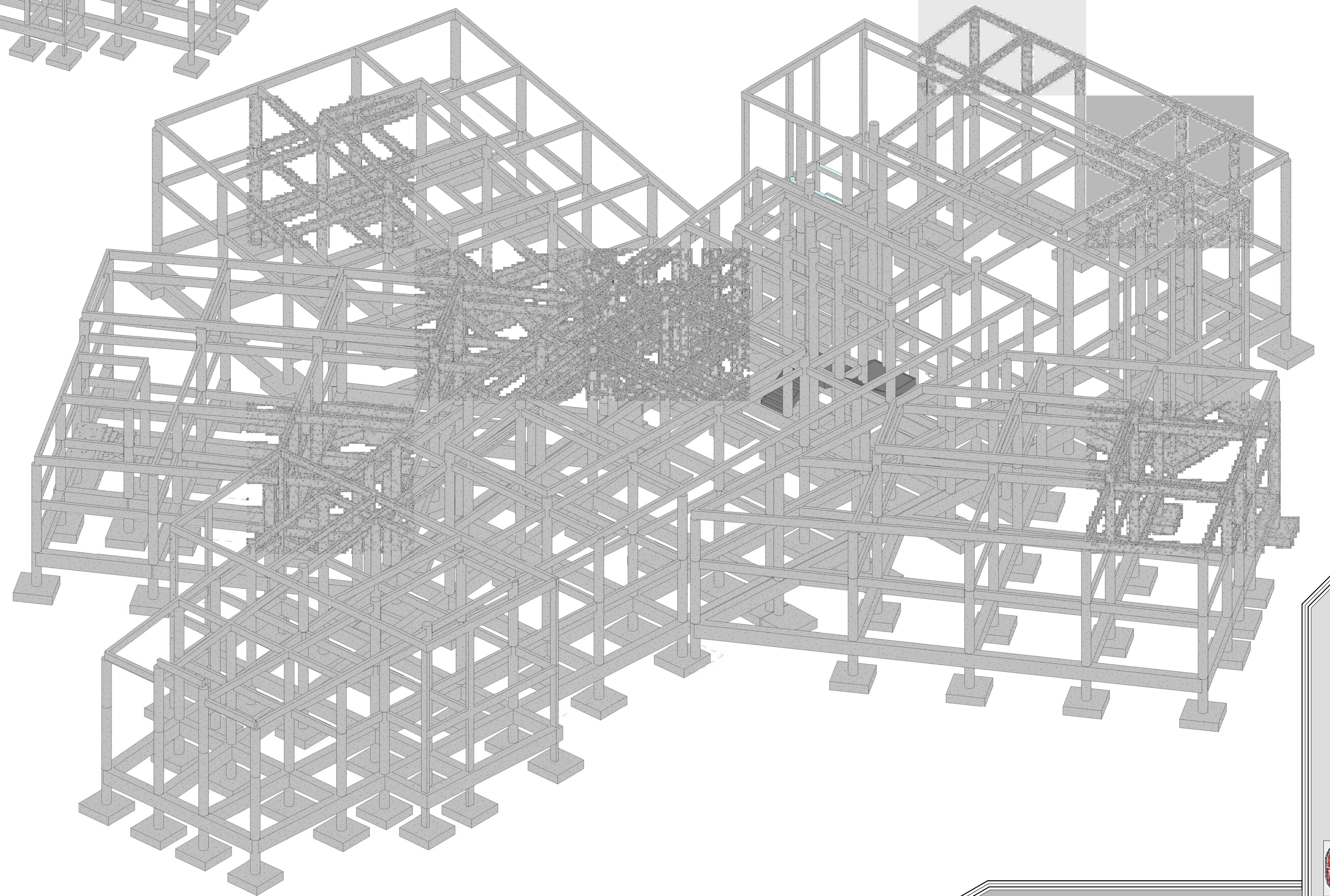
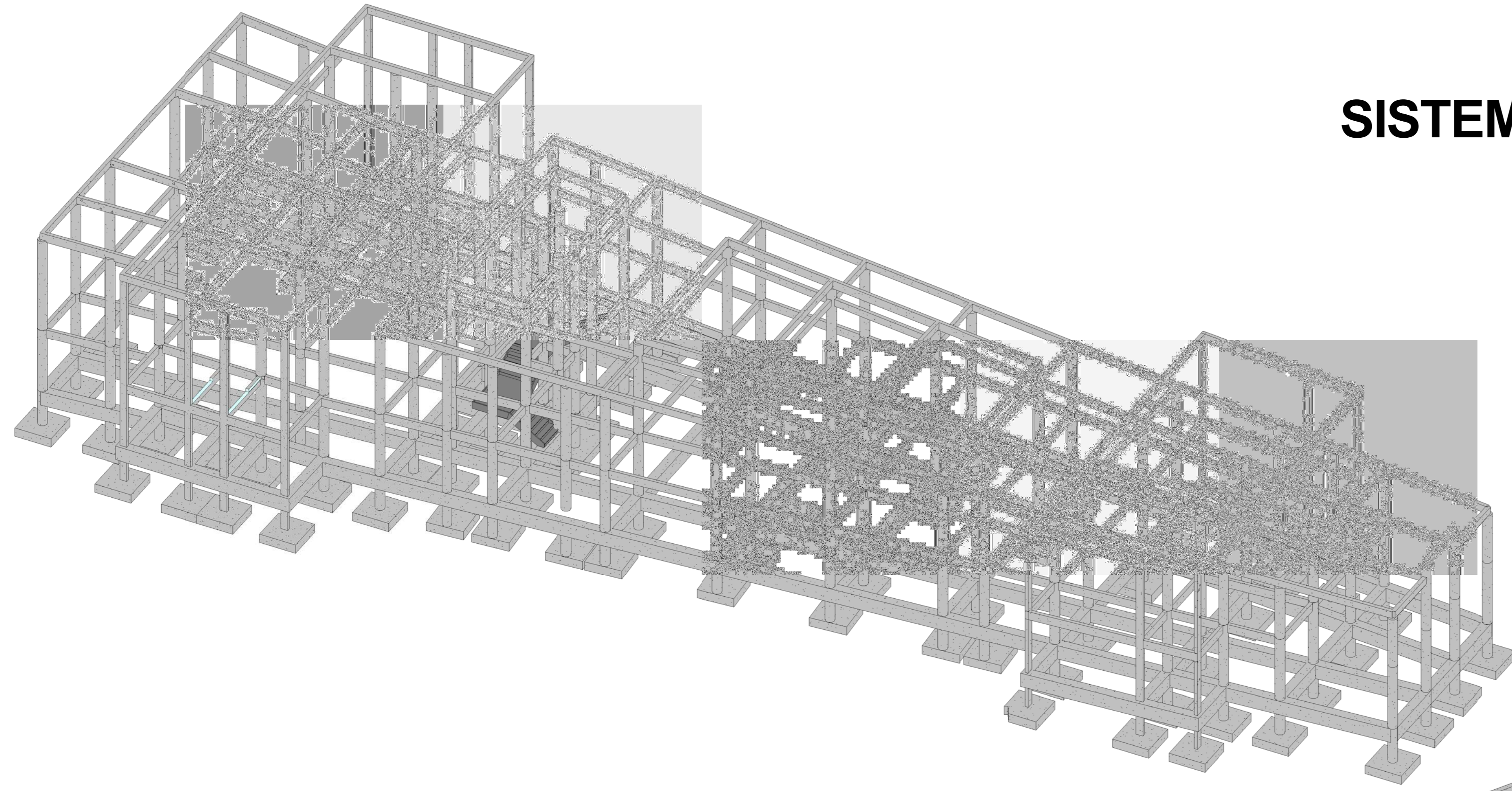
PERSPECTIVAS EXTERIORES



PERSPECTIVAS INTERIORES



SISTEMA ESTRUCTURAL



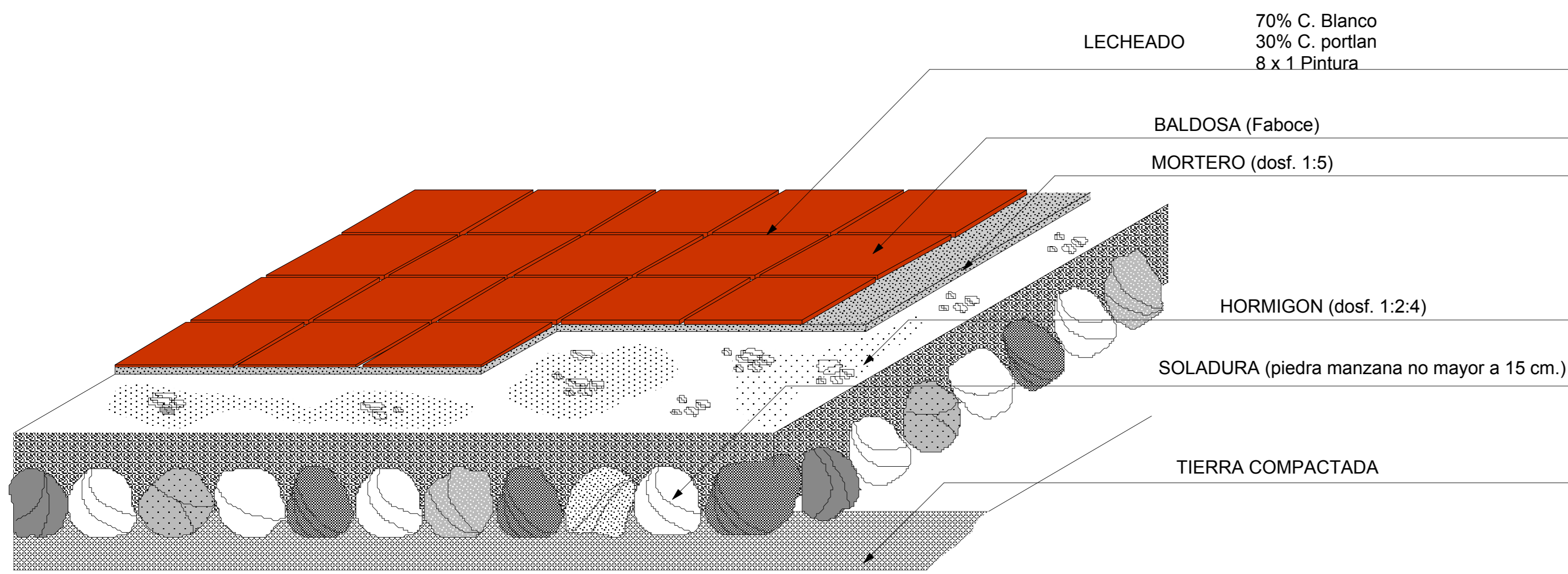
PROYECTO:
BIBLIOTECA PÚBLICA VIRTUAL
MUNICIPIO DE PADCAYA

DOC:
ARQ. CIRO VARGAS LOPEZ
UNIV:
GUERRERO FERNANDEZ JHOVANA

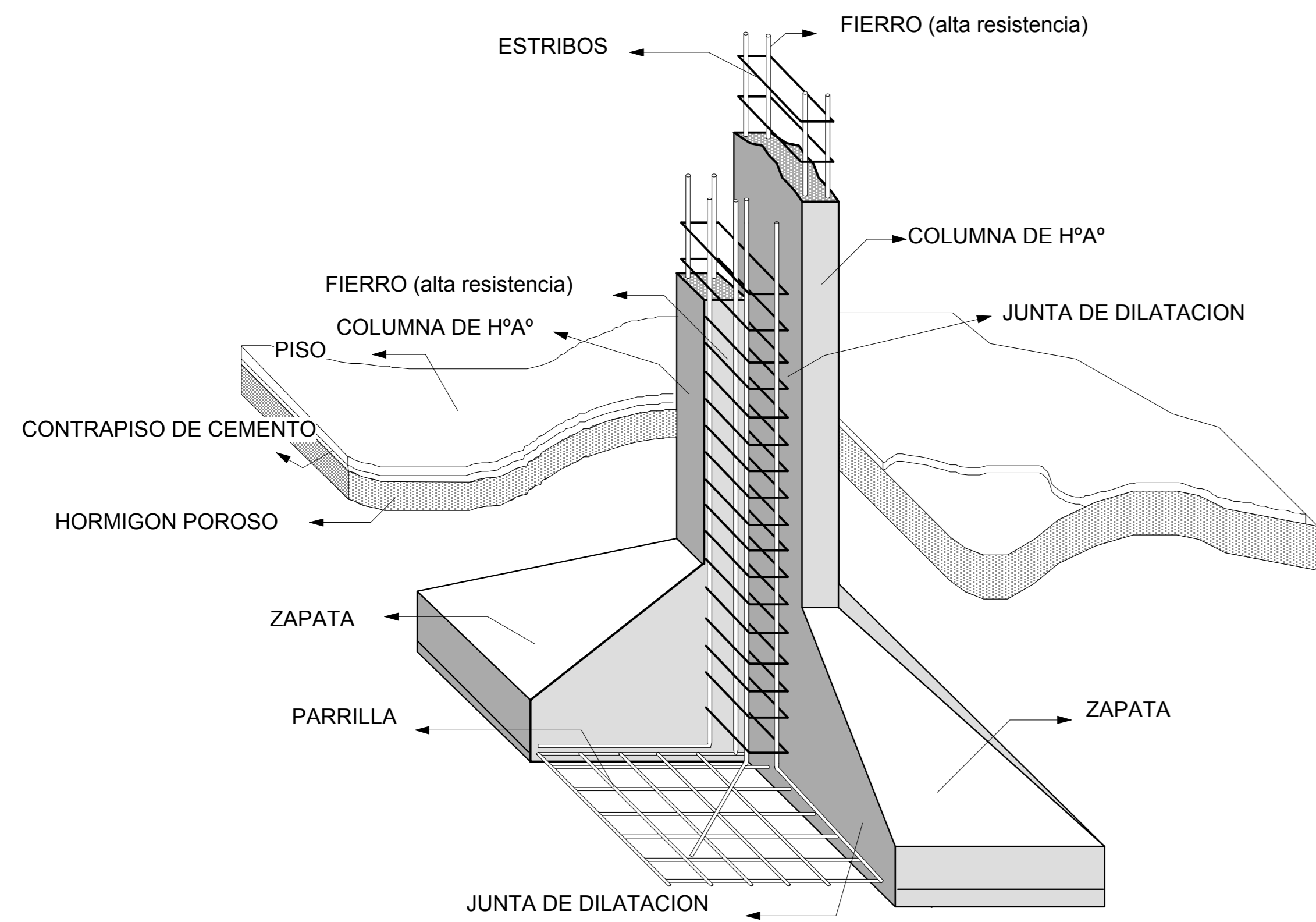
MAYO 2016

DETALLES CONSTRUCTIVOS

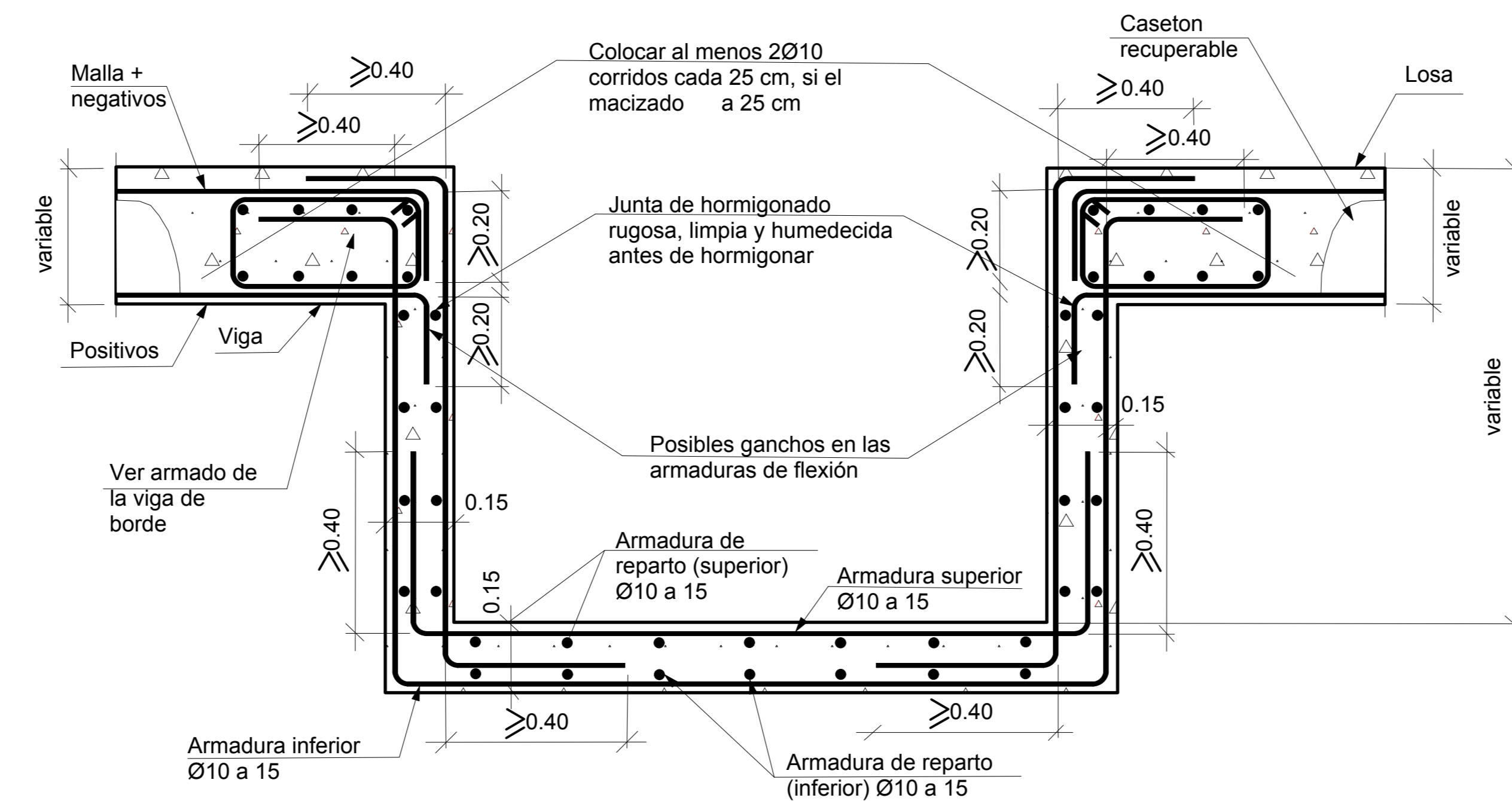
DETALLE DE PISOS



ZAPATA EN JUNTA DE DILATACION

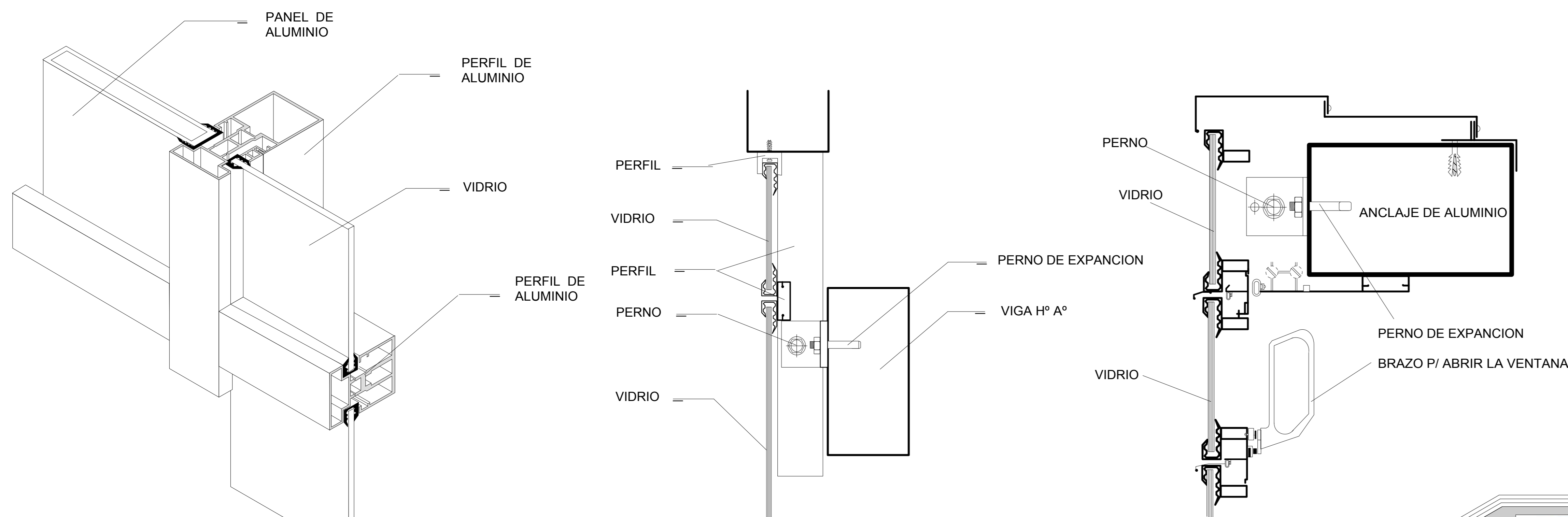


DETALLE DE FOSO DE ASCENSOR

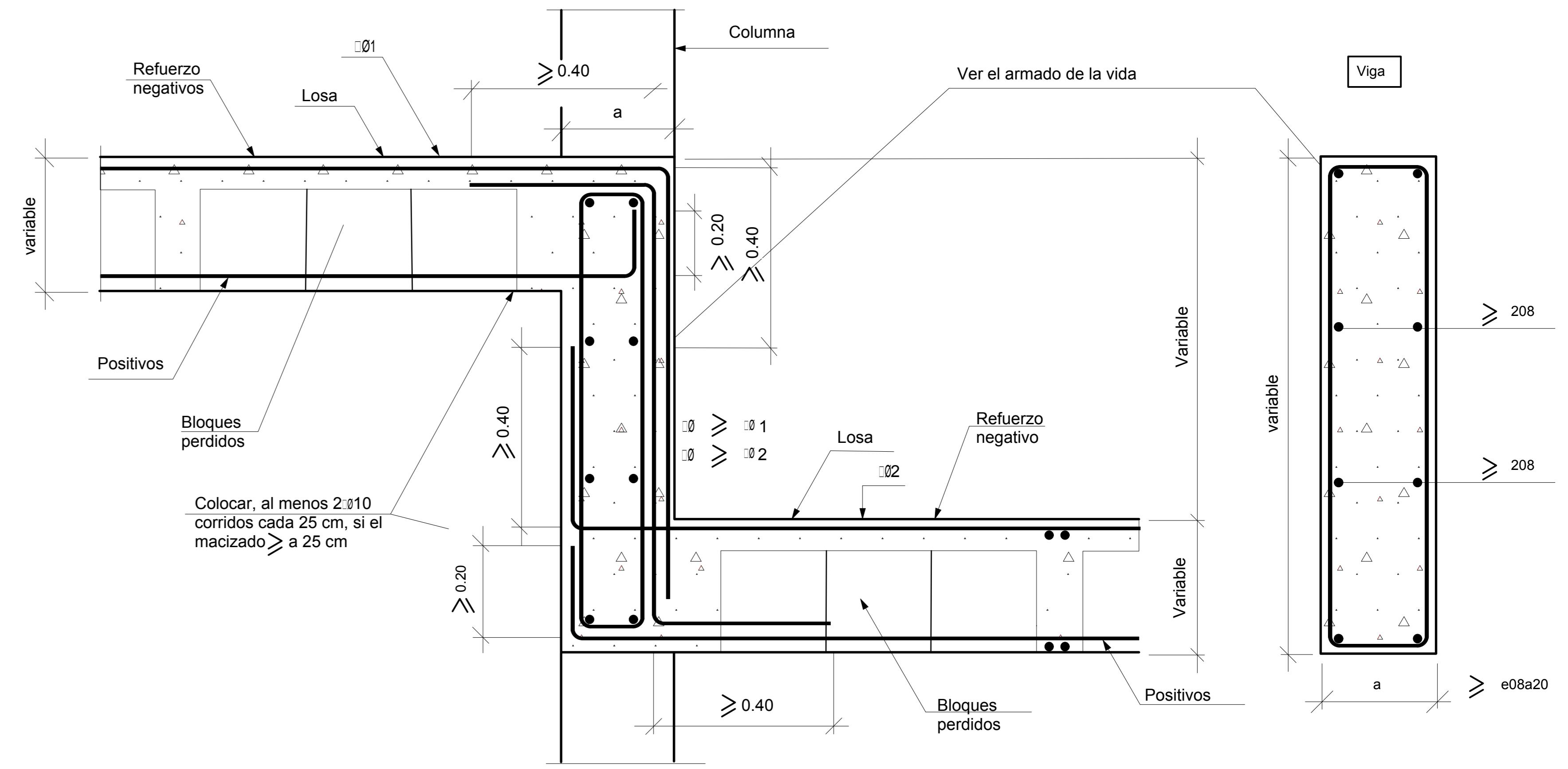


NOTA: el dimensionamiento de las armaduras del foso depende de la tipologia del ascensor. Las armaduras dispuestas propuestas corresponden a los ascensores de cables y maquinaria en cubierta, provistos de paracaídas.

DETALLE DE CARPINTERIA DE ALUMINIO Y VIDRIO TEMPLADO

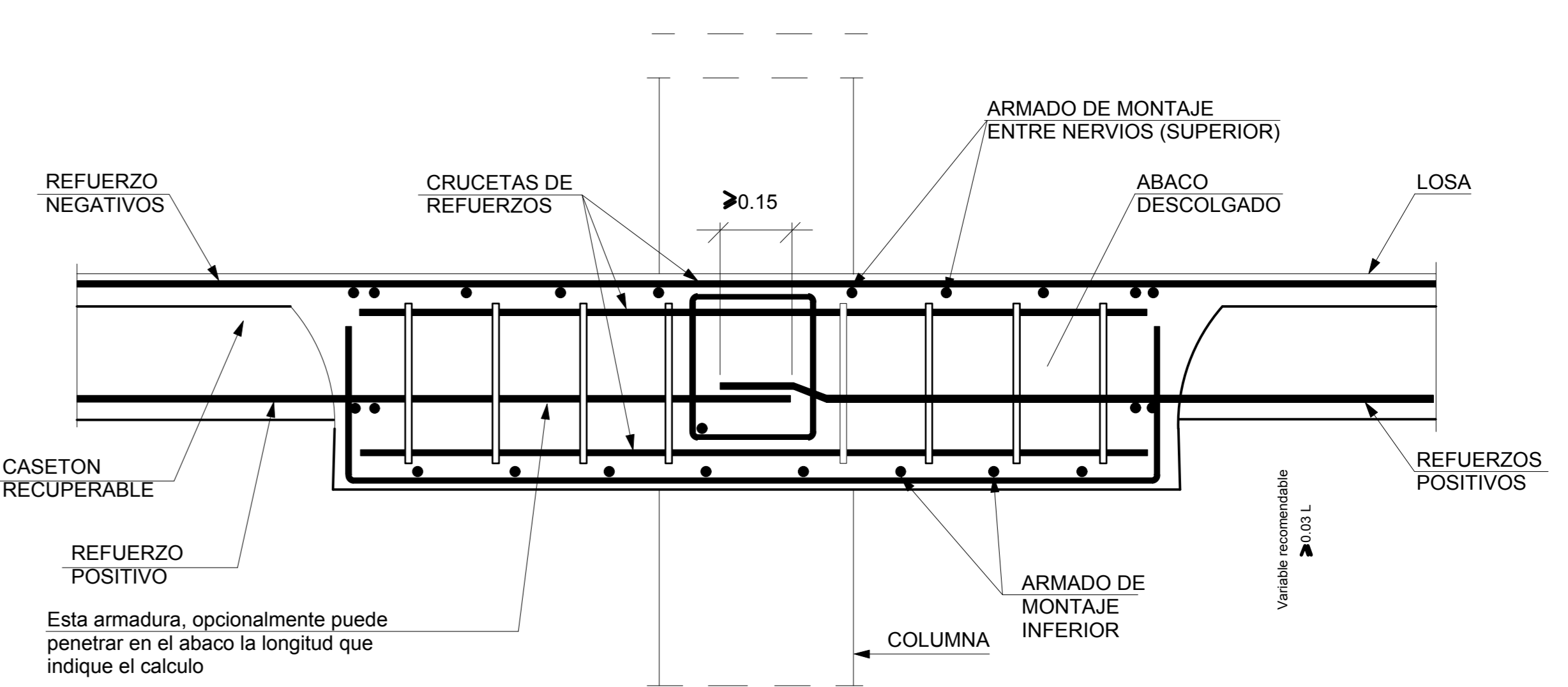


CAMBIO DE COTA CON DESNIVEL

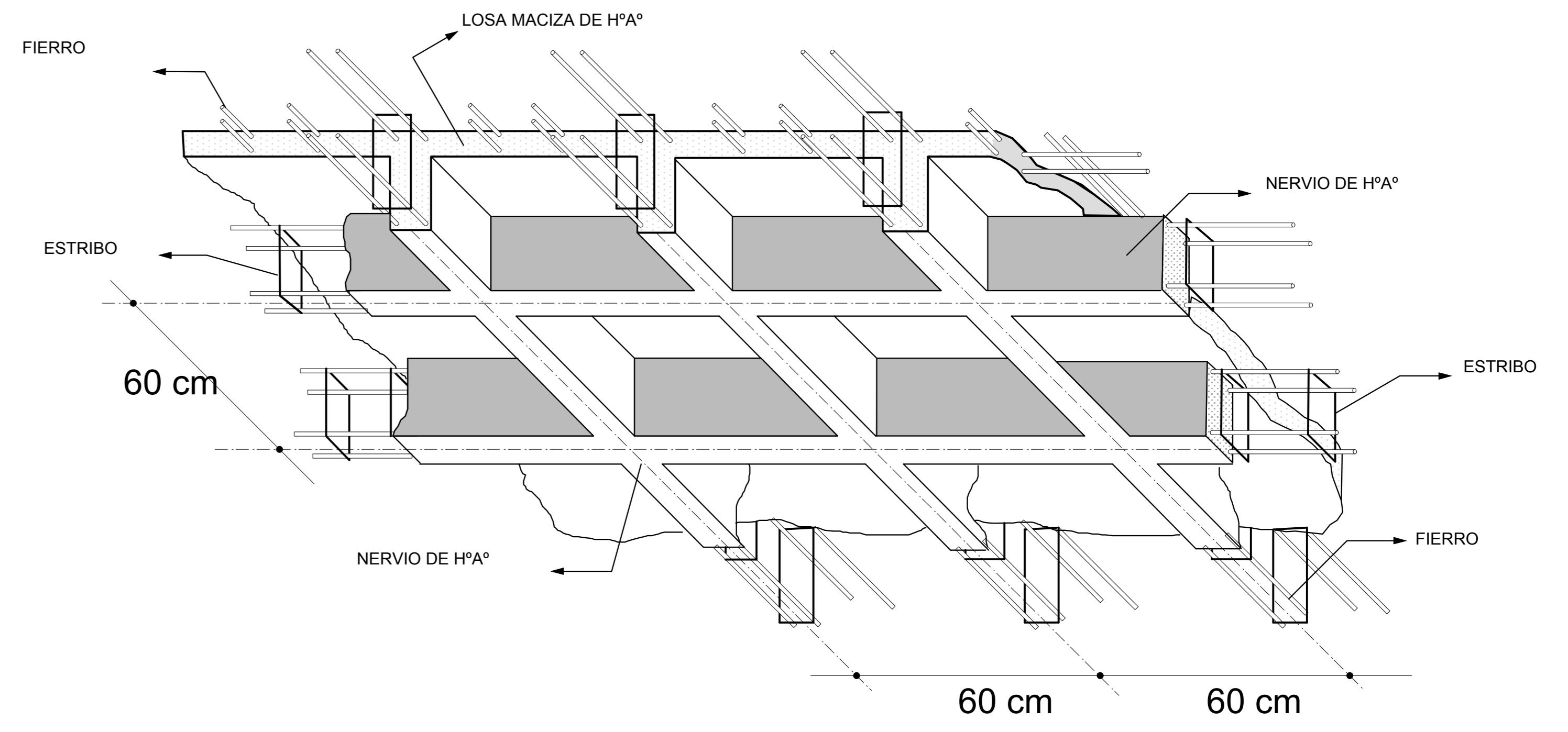


Nota: a (aprox)20/25 cm.

DETALLE DE LOSA CASETON



NOTA L=LUIZ ENRTE COLUMNAS



PROYECTO: BIBLIOTECA PÚBLICA VIRTUAL PADCAYA MUNICIPIO DE PADCAYA

DOC: ARQ. CIRO VARGAS LOPEZ
UNIV: GUERRERO FERNANDEZ JHOVANA

MAYO 2016

LAMINA N° 45

ARQUITECTURA Y URBANISMO

U
A
J
M
S

CORTE DE BORDE

1 : 15

