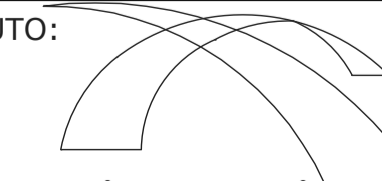


EJECUTO:  
  
**ache s.r.l.**

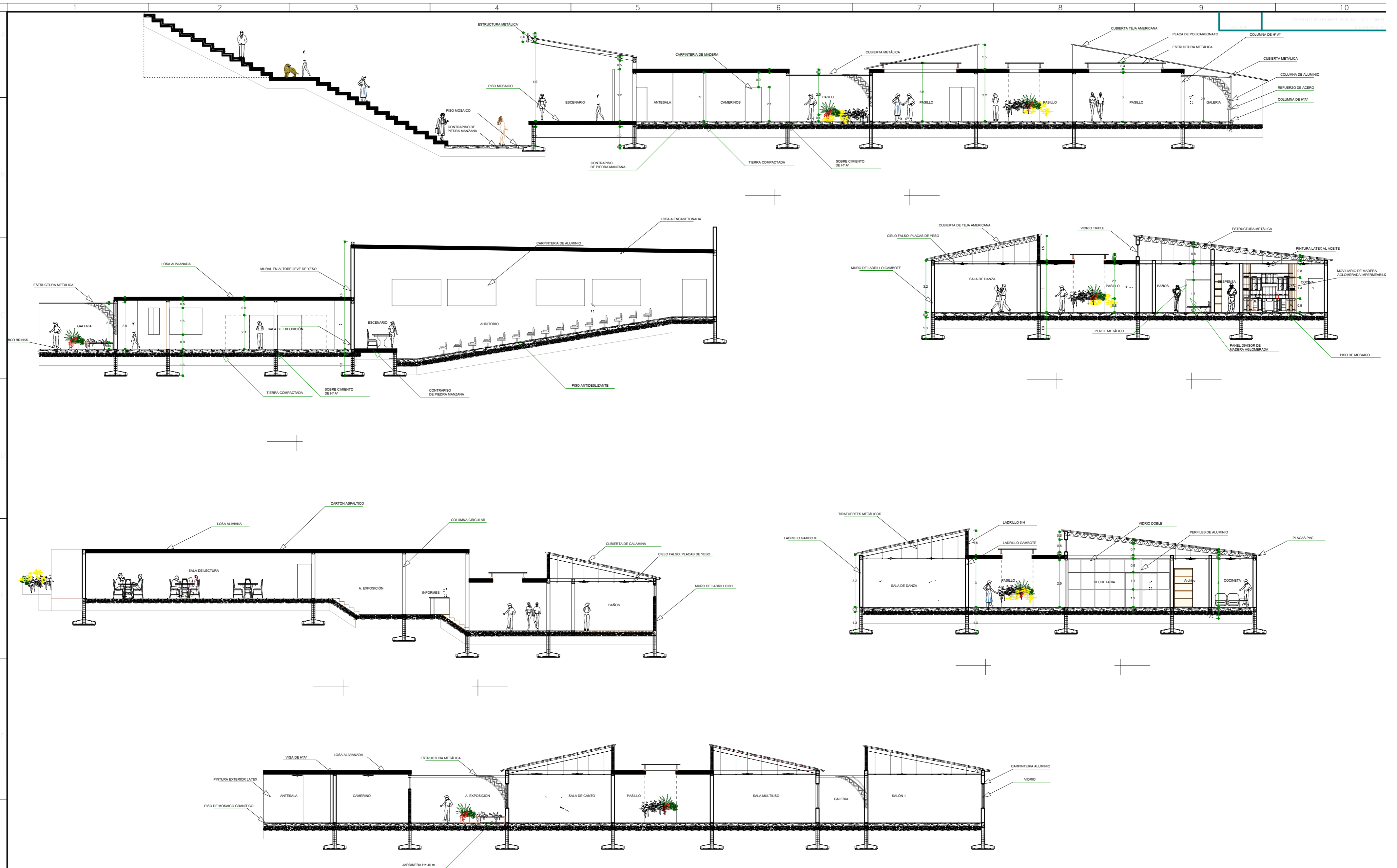
ESTADO PLURINACIONAL DE BOLIVIA  
 GOBIERNO AUTONOMO MUNICIPAL DE  
 ENTRE RIOS PROV. O'CONNOR

PROYECTO: ESTUDIO A DISEÑO FINAL  
 CONSTRUCCION Y EQUIPAMIENTO  
 "CENTRO INTEGRAL SOCIAL CULTURAL"

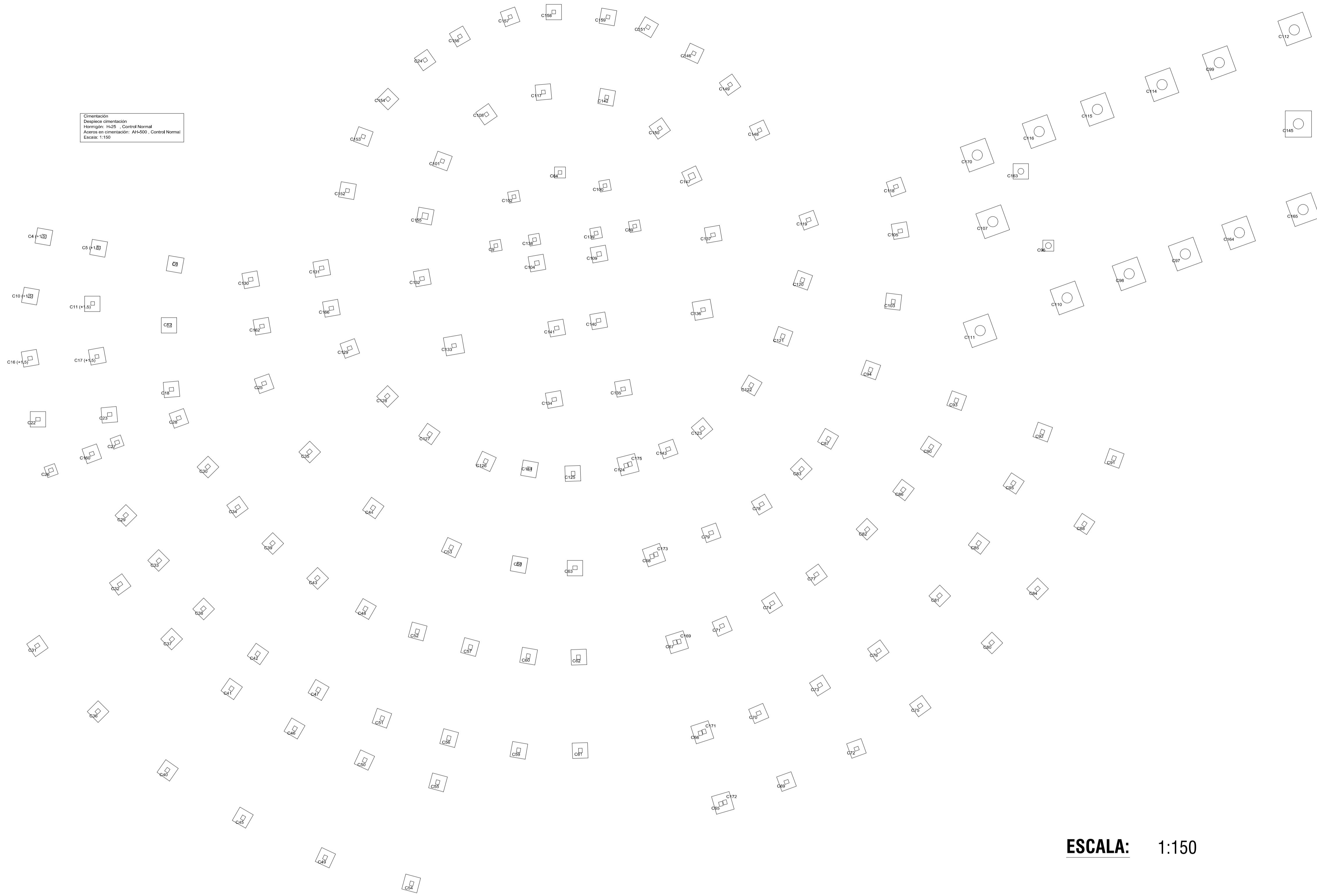
PLANOS:  
**PLANTA  
 EMPLAZADA**

ESCALA:  
**ESC : 1:150**  
 FECHA:

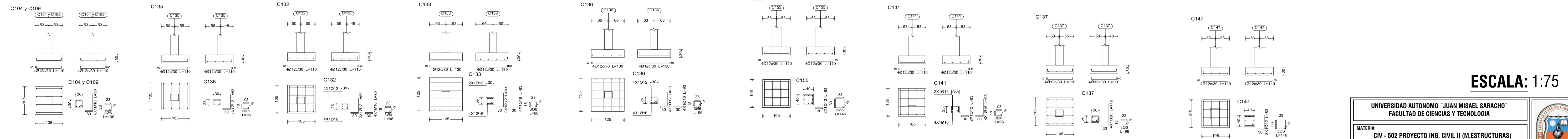
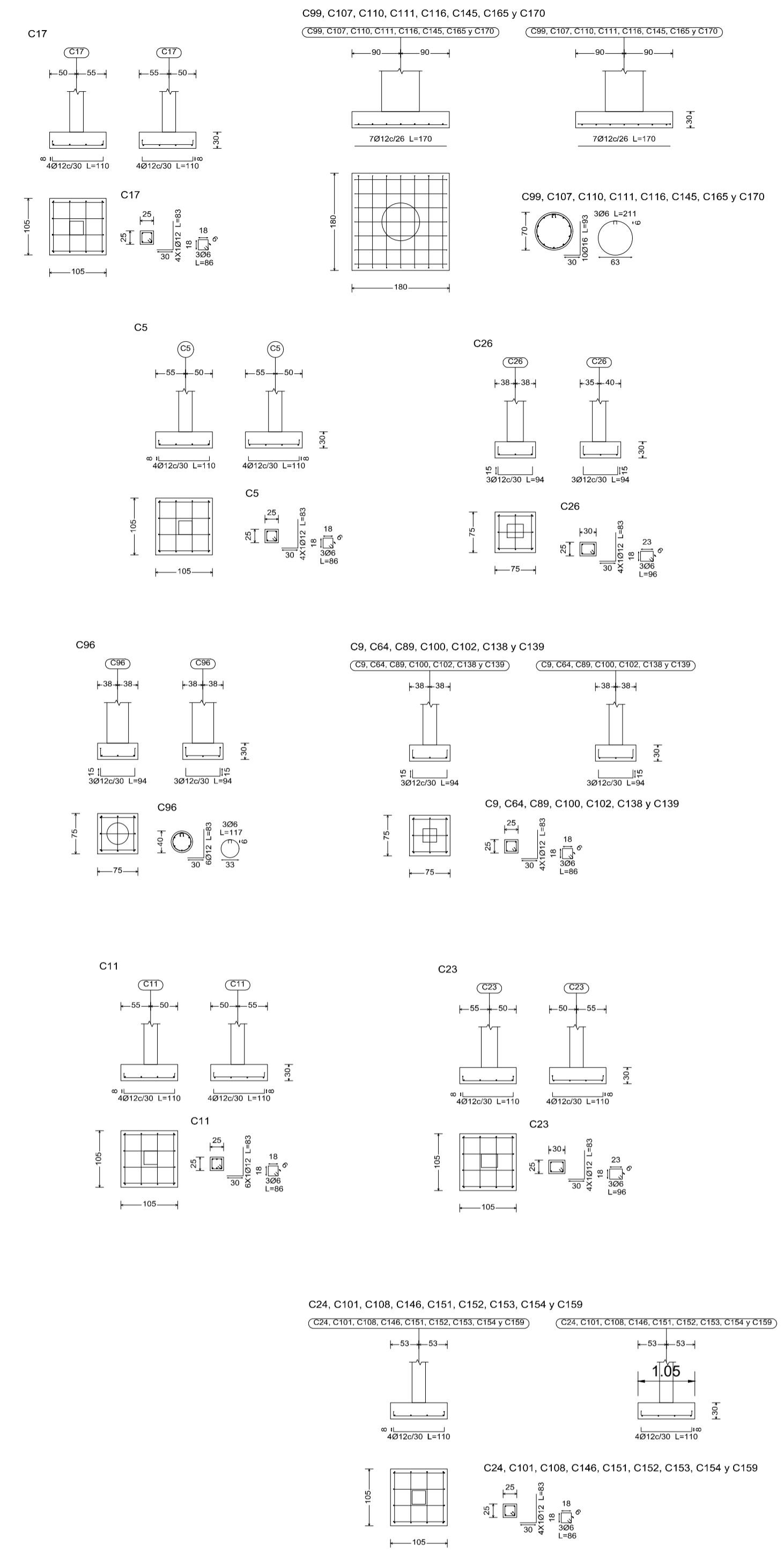
LAMINA  
**01**



Orientación:  
 Dirección orientacion  
 Hombrón: H=25 - Control Normal  
 Ancho en orientación: AN=500 - Control Normal  
 Escala: 1:150



**ESCALA: 1:150**



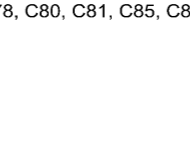
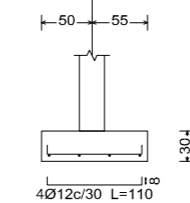
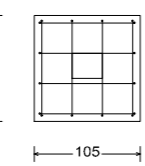
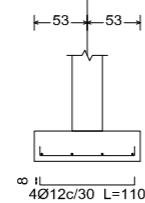
**ESCALA: 1:75**

<b>UNIVERSIDAD AUTÓNOMA "JUAN MISAEL SARACHO"</b> <b>FACULTAD DE CIENCIAS Y TECNOLOGÍA</b>		
<b>MATERIA:</b> CIV - 502 PROYECTO ING. CIVIL II (M. ESTRUCTURAS)		
<b>PROYECTO:</b> DISEÑO ESTRUCTURAL CONSTRUCCIÓN CENTRO INTEGRAL SOCIAL Y CULTURAL ENTRE RÍOS		<b>LAMINA:</b> <span style="font-size: 2em; font-weight: bold;">03</span>
<b>DESCRIPCIÓN:</b> PLANOS DE FUNDACIONES Y DESPLIEGUE DE ZAPATAS	<b>UNIVERSITARIO:</b> ANDRÉS FERNÁNDEZ FIGUEROA	
<b>FECHA:</b> MAYO 2023	<b>ESCALA:</b> INDICADA	

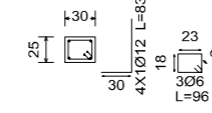
C25, C28, C29, C30, C31, C32, C35, C36, C38, C39, C40, C41, C42, C43, C44, C47, C48, C49, C52, C53, C55, C56, C59, C60, C62, C63, C70, C71, C73, C75, C77, C78, C80, C81, C85, C86, C91, C92, C93, C94, C95, C118, C119, C121, C122, C126, C128, C129, C130 y C131

(C25, C28, C29, C30, C31, C32, C35, C36, C38, C39, C40, C41, C42, C43, C44, C47, C48, C49, C52, C53, C55, C56, C59, C60, C62, C63, C70, C71, C73, C75, C77, C78, C80, C81, C85, C86, C91, C92, C93, C94, C95, C118, C119, C121, C122, C126, C128, C129, C130 y C131)

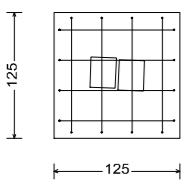
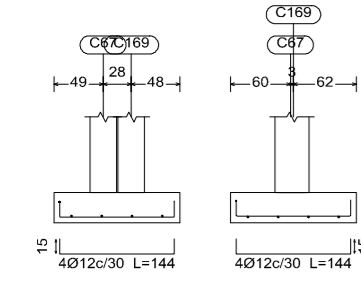
(C25, C28, C29, C30, C31, C32, C35, C36, C38, C39, C40, C41, C42, C43, C44, C47, C48, C49, C52, C53, C55, C56, C59, C60, C62, C63, C70, C71, C73, C75, C77, C78, C80, C81, C85, C86, C91, C92, C93, C94, C95, C118, C119, C121, C122, C126, C128, C129, C130 y C131)



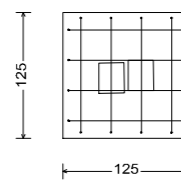
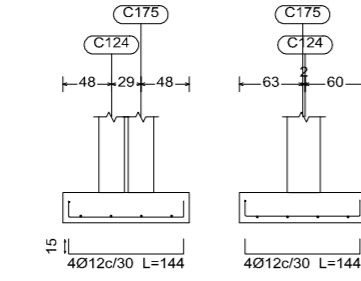
C25, C28, C29, C30, C31, C32, C35, C36, C38, C39, C40, C41, C42, C43, C44, C47, C48, C49, C52, C53, C55, C56, C59, C60, C62, C63, C70, C71, C73, C75, C77, C78, C80, C81, C85, C86, C91, C92, C93, C94, C95, C118, C119, C121, C122, C126, C128, C129, C130 y C131



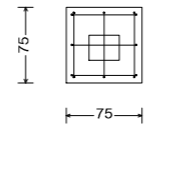
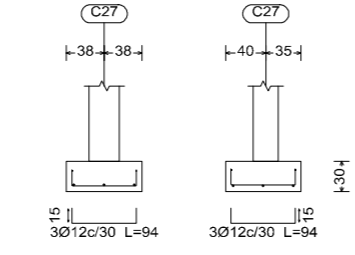
(C67-C169)



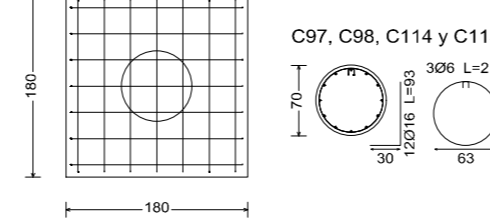
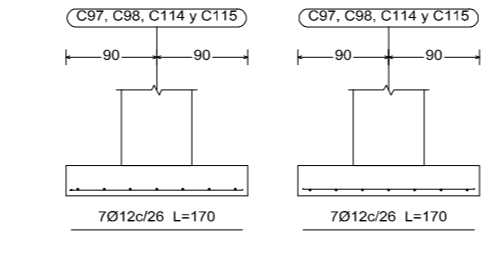
(C124-C175)



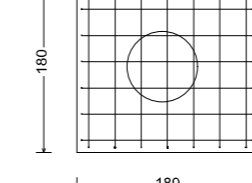
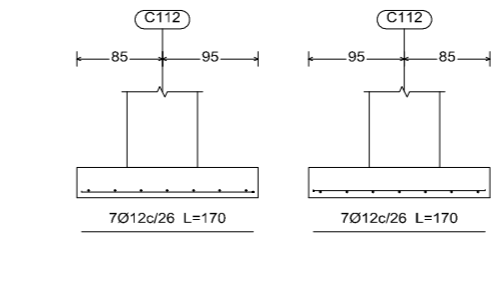
C27



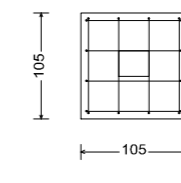
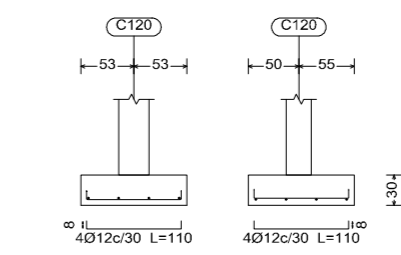
C97, C98, C114 y C115



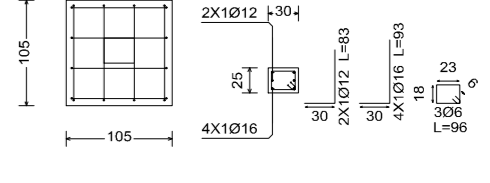
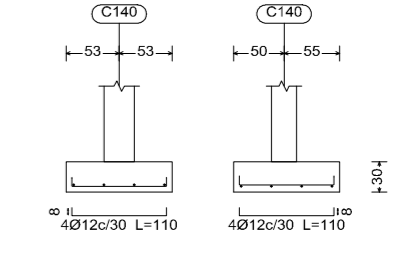
C112



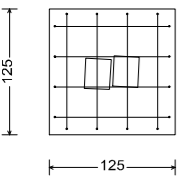
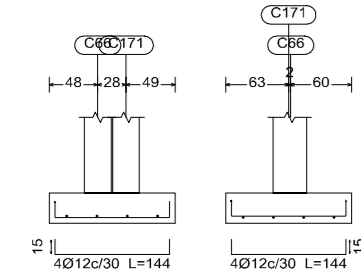
C120



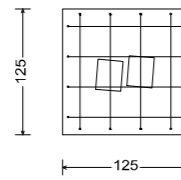
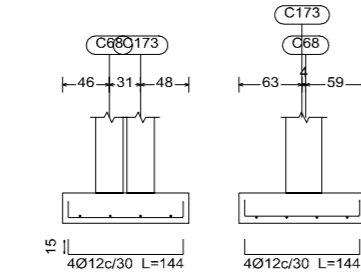
C140



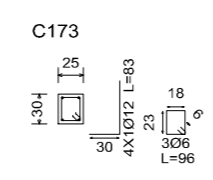
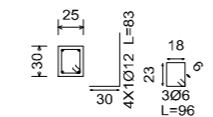
(C66-C171)



(C68-C173)



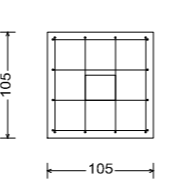
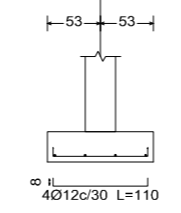
C68



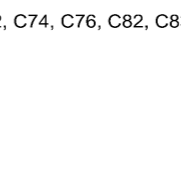
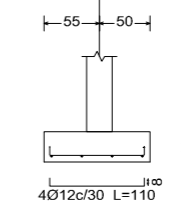
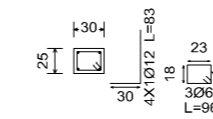
C4, C6, C33, C34, C37, C45, C46, C50, C51, C54, C57, C58, C61, C69, C72, C74, C76, C82, C83, C87, C90, C105, C123, C125 y C127

(C4, C6, C33, C34, C37, C45, C46, C50, C51, C54, C57, C58, C61, C69, C72, C74, C76, C82, C83, C87, C90, C105, C123, C125 y C127)

(C4, C6, C33, C34, C37, C45, C46, C50, C51, C54, C57, C58, C61, C69, C72, C74, C76, C82, C83, C87, C90, C105, C123, C125 y C127)



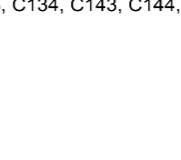
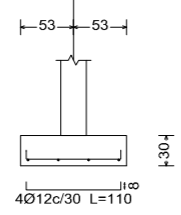
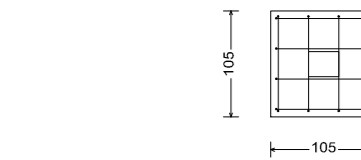
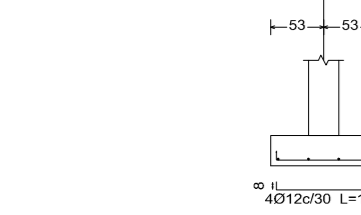
C4, C6, C33, C34, C37, C45, C46, C50, C51, C54, C57, C58, C61, C69, C72, C74, C76, C82, C83, C87, C90, C105, C123, C125 y C127



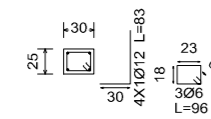
C10, C16, C18, C22, C79, C84, C88, C103, C134, C143, C144, C160, C162 y C166

(C10, C16, C18, C22, C79, C84, C88, C103, C134, C143, C144, C160, C162 y C166)

(C10, C16, C18, C22, C79, C84, C88, C103, C134, C143, C144, C160, C162 y C166)



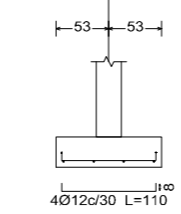
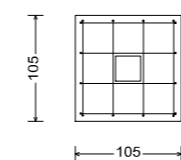
C10, C16, C18, C22, C79, C84, C88, C103, C134, C143, C144, C160, C162 y C166



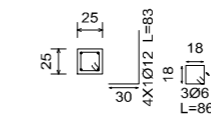
C117, C142, C148, C149, C150, C156, C157 y C158

(C117, C142, C148, C149, C150, C156, C157 y C158)

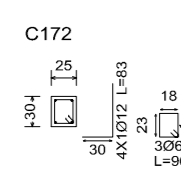
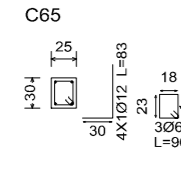
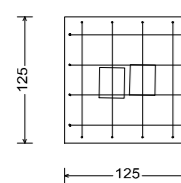
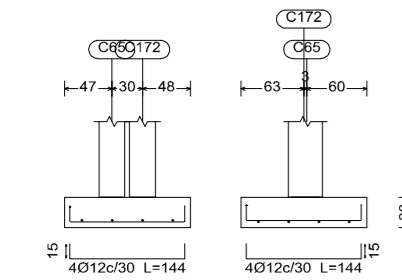
(C117, C142, C148, C149, C150, C156, C157 y C158)



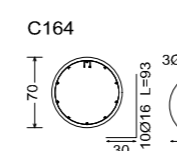
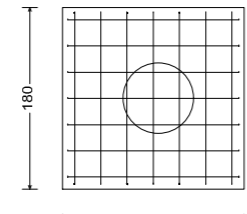
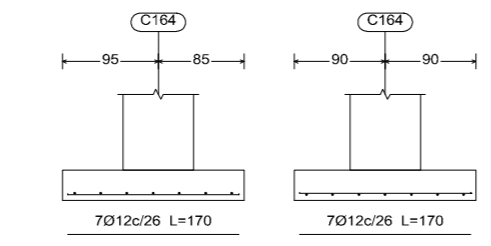
C117, C142, C148, C149, C150, C156, C157 y C158



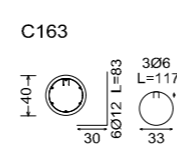
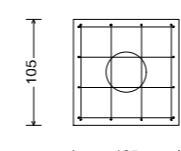
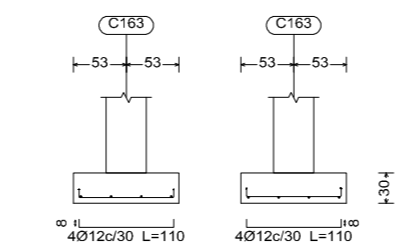
(C65-C172)



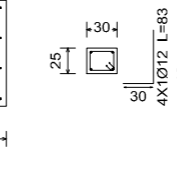
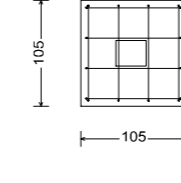
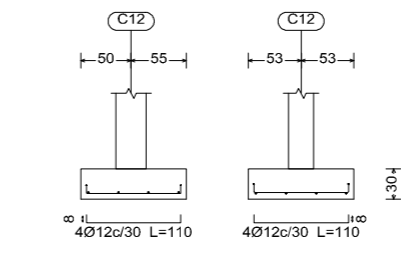
C164



C163

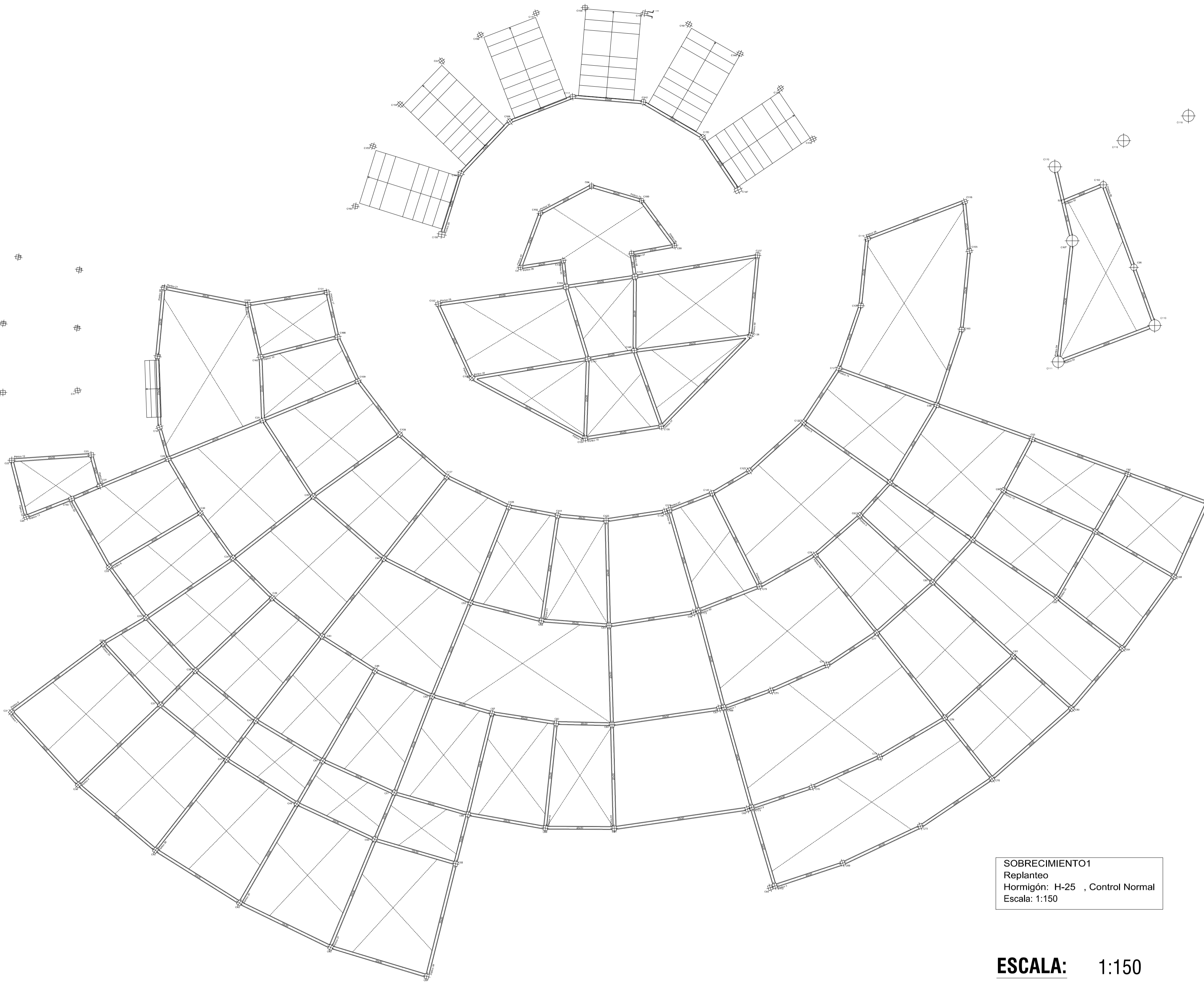


C12



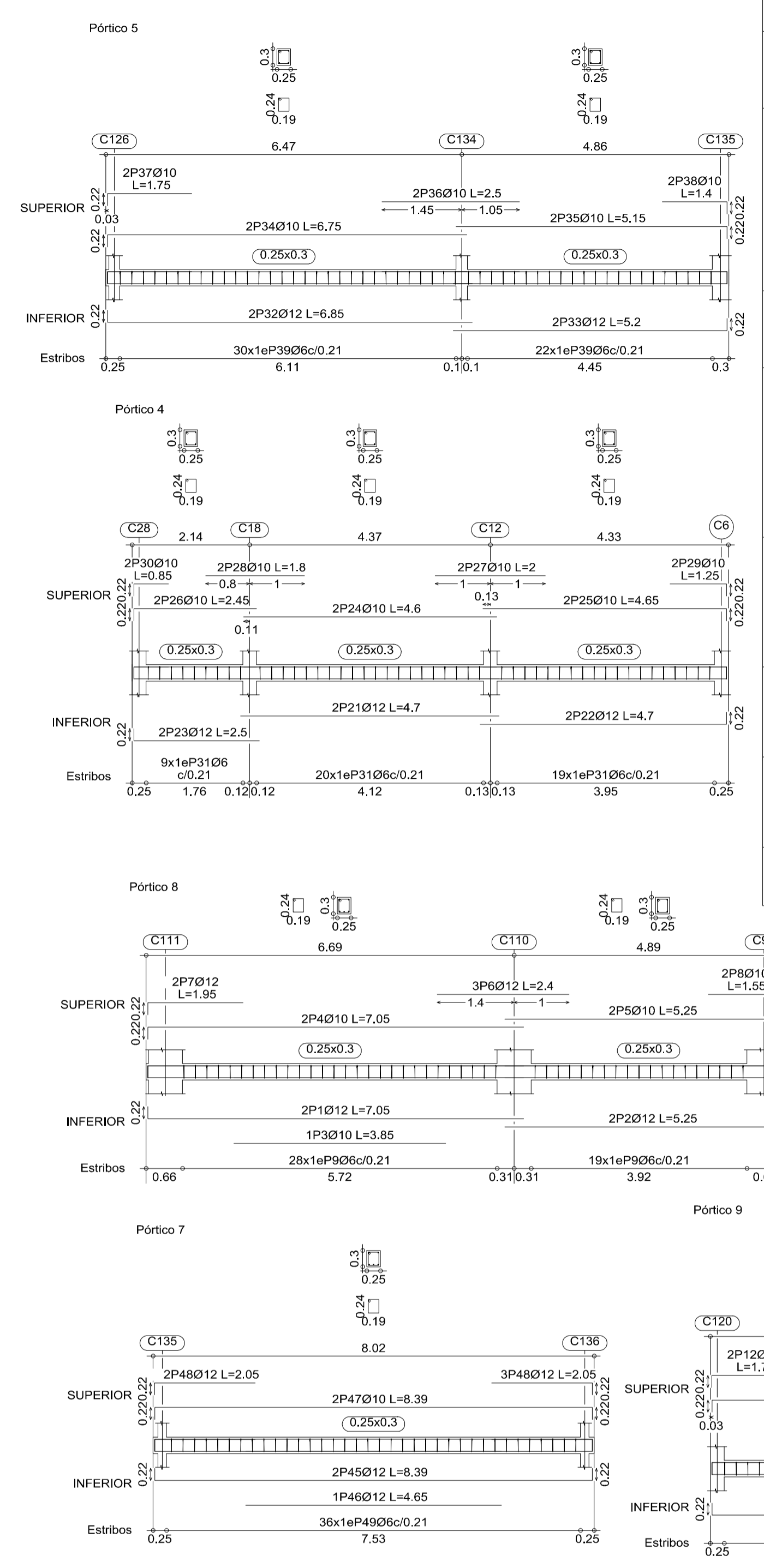
ESCALA: 1:75

UNIVERSIDAD AUTONOMA "JUAN MISAEL SARACHO" FACULTAD DE CIENCIAS Y TECNOLOGIA		
MATERIA: CIV - 502 PROYECTO ING. CIVIL II (M. ESTRUCTURAS)		
PROYECTO: DISEÑO ESTRUCTURAL CONSTRUCCIÓN CENTRO INTEGRAL SOCIAL Y CULTURAL ENTRE RÍOS		
DESCRIPCION: DESPLIEGUE DE ZAPATAS (ACONTINUACION)	UNIVERSITARIO: ANDRES FERNANDEZ FIGUEROA	LAMINA: 04
FECHA: MAYO 2023	ESCALA: INDICADA	



SOBRECIMIENTO1  
 Replanteo  
 Hormigón: H-25 , Control Normal  
 Escala: 1:150

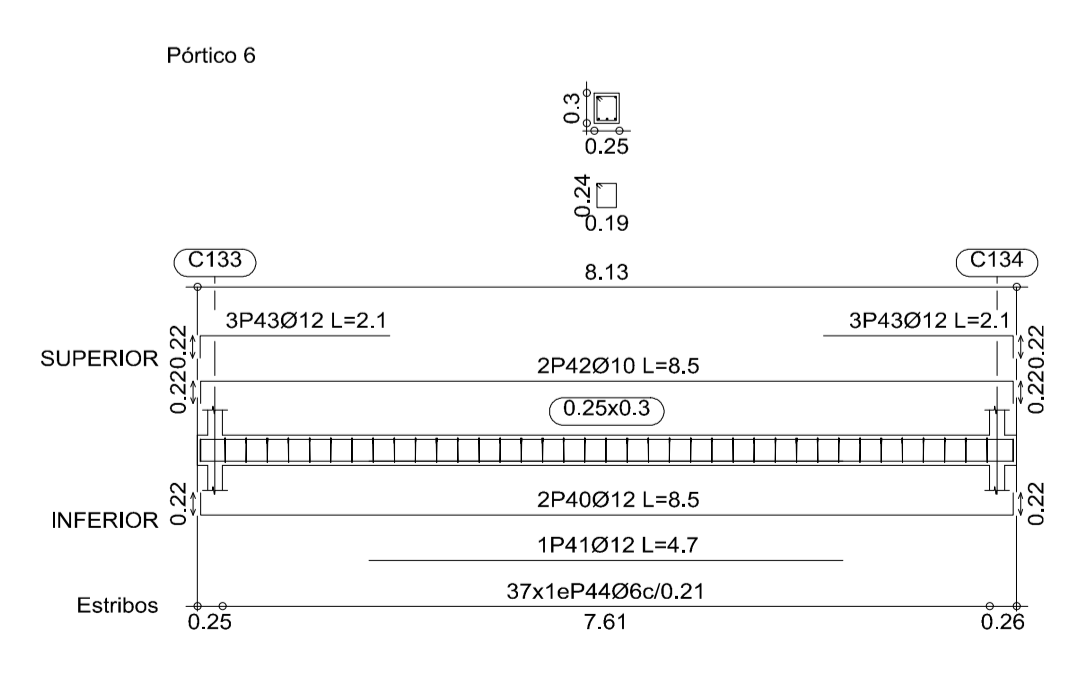
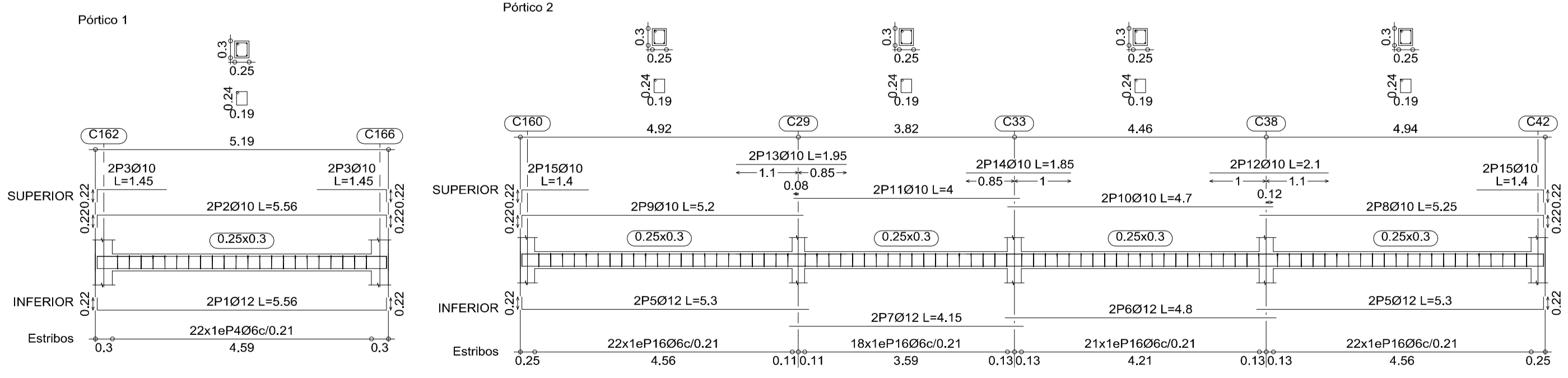
ESCALA: 1:150



ESCALA: 1:75

Elemento	Pos.	Diám.	No.	Long. (cm)	Total (cm)	AH-500CN (kg)	
Pórtico 1	1	Ø12	2	556	1112	9.9	
	2	Ø10	2	556	1112	6.9	
	3	Ø10	4	145	580	3.6	
	4	Ø6	22	98	2156	4.8	
Total+10%:						27.7	
Pórtico 2	5	Ø12	4	530	2120	18.8	
	6	Ø12	2	480	960	8.5	
	7	Ø12	2	415	830	7.4	
	8	Ø10	2	525	1050	6.5	
	9	Ø10	2	520	1040	6.4	
	10	Ø10	2	470	940	5.8	
	11	Ø10	2	400	800	4.9	
	12	Ø10	2	210	420	2.6	
	13	Ø10	2	195	390	2.4	
	14	Ø10	2	185	370	2.3	
	15	Ø10	4	140	560	3.5	
	16	Ø6	83	98	8134	18.1	
	Total+10%:						95.9
	Pórtico 3	17	Ø12	2	557	1114	9.9
		18	Ø10	2	557	1114	6.9
		19	Ø10	4	145	580	3.6
20		Ø6	22	98	2156	4.8	
Total+10%:						27.7	
Pórtico 4	21	Ø12	2	470	940	8.3	
	22	Ø12	2	470	940	8.3	
	23	Ø10	2	250	500	4.4	
	24	Ø10	2	460	920	5.7	
	25	Ø10	2	465	930	5.7	
	26	Ø10	2	245	490	3.0	
	27	Ø10	2	200	400	2.5	
	28	Ø10	2	180	360	2.2	
	29	Ø10	2	125	250	1.5	
	30	Ø10	2	85	170	1.0	
	31	Ø6	48	98	4704	10.4	
Total+10%:						58.3	
Pórtico 5	32	Ø12	2	685	1370	12.2	
	33	Ø12	2	520	1040	9.2	
	34	Ø10	2	675	1350	8.3	
	35	Ø10	2	515	1030	6.4	
	36	Ø10	2	250	500	3.1	
	37	Ø10	2	175	350	2.2	
	38	Ø10	2	140	280	1.7	
	39	Ø6	52	98	5096	11.3	
	Total+10%:						59.8
Pórtico 6	40	Ø12	2	850	1700	15.1	
	41	Ø12	1	470	470	4.2	
	42	Ø10	2	850	1700	10.5	
	43	Ø12	6	210	1260	11.2	
	44	Ø6	37	98	3626	8.0	
Total+10%:						53.9	
Pórtico 7	45	Ø12	2	839	1678	14.9	
	46	Ø12	1	465	465	4.1	
	47	Ø10	2	839	1678	10.3	
	48	Ø12	5	205	1025	9.1	
	49	Ø6	36	98	3528	7.8	
Total+10%:						50.8	
Ø6: 71.7							
Ø10: 131.3							
Ø12: 171.1							
Total: 374.1							

ESCALA: 1:75



ESCALA: 1:75

<b>UNIVERSIDAD AUTÓNOMA "JUAN MISAEL SARACHO"</b> FACULTAD DE CIENCIAS Y TECNOLOGÍA		
MATERIA: <b>CIV - 502 PROYECTO ING. CIVIL II (M. ESTRUCTURAS)</b>		
PROYECTO: <b>DISÑO ESTRUCTURAL CONSTRUCCIÓN CENTRO INTEGRAL SOCIAL Y CULTURAL ENTRE RÍOS</b>		
DESCRIPCIÓN: <b>PLANO EN PLANTA SOBRECIMIENTO 1 Y VIGAS</b>	UNIVERSITARIO: <b>ANDRES FERNANDEZ FIGUEROA</b>	LÁMINA: <b>05</b>
FECHA: <b>MAYO 2023</b>	ESCALA: <b>INDICADA</b>	