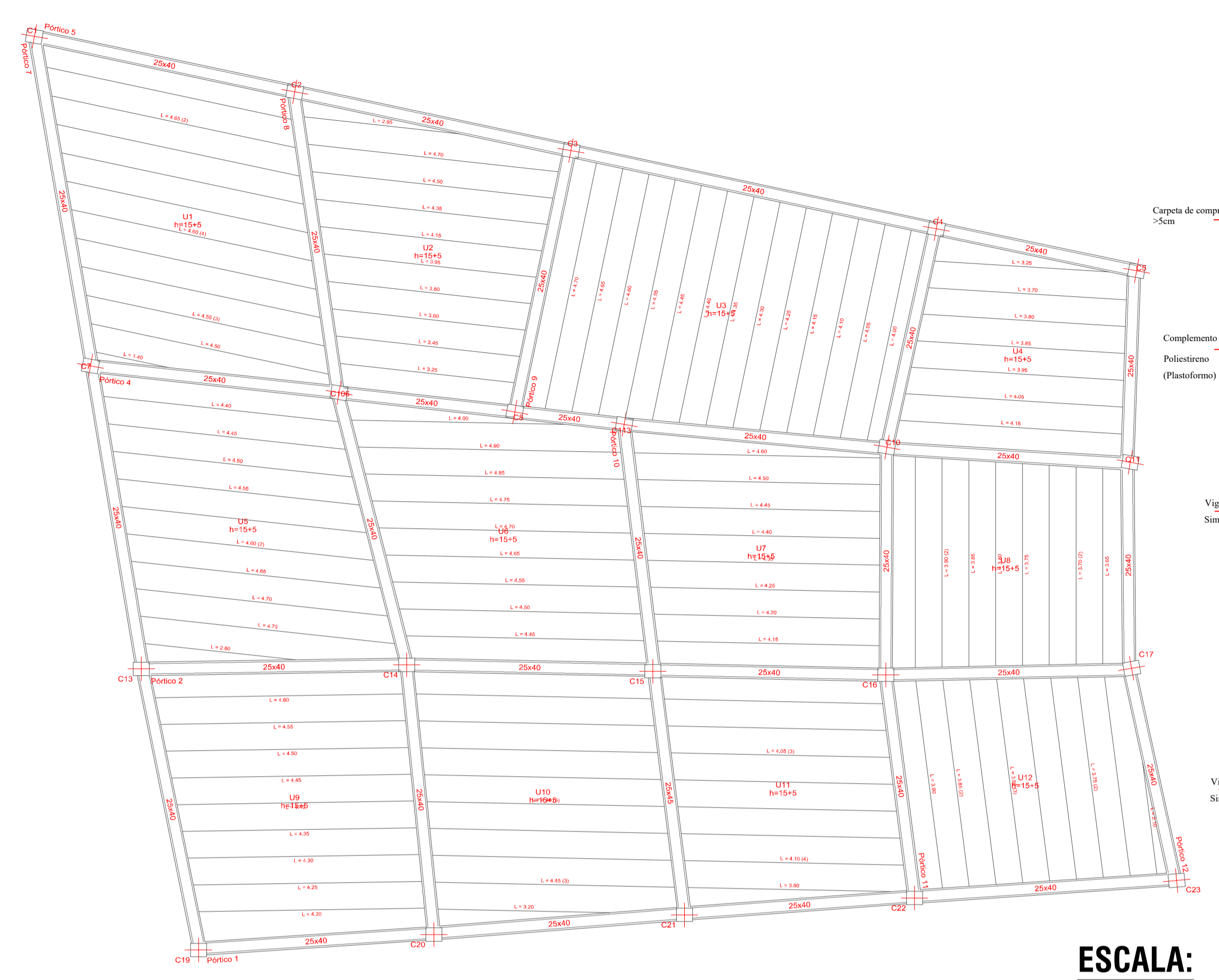


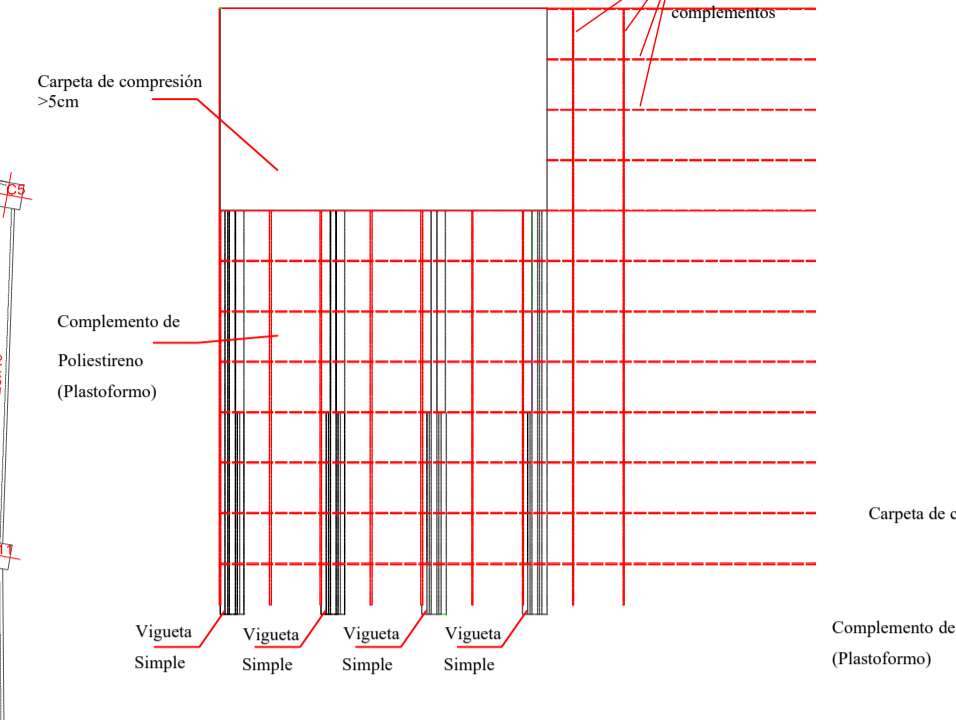
Elemento	Pos.	Diám.	No.	Long. (cm)	Total (cm)	AH-500CN (kg)	
Pórtico 102	1	Ø12	2	475	950	8.4	
	2	Ø12	2	420	840	7.5	
	3	Ø12	2	335	670	5.9	
	4	Ø12	2	330	660	5.9	
	5	Ø12	1	320	320	2.8	
	6	Ø12	1	260	260	3.1	
	7	Ø12	2	205	410	1.8	
	8	Ø12	1	180	180	1.6	
	9	Ø10	2	470	940	5.8	
	10	Ø10	2	415	830	5.1	
	11	Ø10	4	325	1300	8.0	
	12	Ø12	2	225	450	4.0	
	13	Ø12	2	175	350	3.1	
	14	Ø12	2	140	280	2.5	
	15	Ø12	2	130	260	2.3	
	16	Ø12	2	120	240	2.1	
	17	Ø6	56	128	7168	15.9	
Total+10%:						93.5	
Pórtico 103	18	Ø12	2	690	1380	12.3	
	19	Ø12	2	555	1110	9.9	
	20	Ø12	1	435	435	3.9	
	21	Ø12	1	410	410	3.6	
	22	Ø10	2	690	1380	8.5	
	23	Ø10	2	555	1110	6.8	
	24	Ø12	2	260	520	4.6	
	25	Ø10	2	230	460	4.1	
	26	Ø12	2	150	300	2.7	
	27	Ø6	41	128	5248	11.6	
	Total+10%:						74.8
	Pórtico 104	28	Ø16	2	720	1440	22.7
		29	Ø12	1	400	400	3.6
		30	Ø10	2	395	790	4.9
		31	Ø10	2	715	1430	8.8
		32	Ø10	2	390	780	4.8
		33	Ø12	3	525	1575	14.0
		34	Ø12	2	185	370	3.3
35		Ø6	36	128	4608	10.2	
Total+10%:						79.5	
Ø6: 41.5							
Ø10: 57.9							
Ø12: 123.4							
Ø16: 25.0							
Total: 247.8							

Elemento	Pos.	Diám.	No.	Long. (cm)	Total (cm)	AH-500CN (kg)	
Pórtico 88	1	Ø12	2	415	830	7.5	
	2	Ø12	2	495	990	8.8	
	3	Ø12	2	450	900	8.7	
	4	Ø12	2	445	890	7.9	
	5	Ø12	1	345	345	3.1	
	6	Ø12	1	340	340	3.0	
	7	Ø12	2	280	560	5.0	
	8	Ø10	2	610	1220	7.5	
	9	Ø10	2	490	980	6.0	
	10	Ø10	2	435	870	6.0	
	11	Ø10	2	440	880	5.4	
	12	Ø12	2	230	460	4.1	
	13	Ø12	2	180	360	3.4	
	14	Ø12	2	205	410	3.6	
	15	Ø12	2	165	330	2.9	
	16	Ø12	2	125	250	2.2	
	17	Ø6	75	128	9600	21.1	
Total+10%:						121.1	
Pórtico 89	18	Ø12	2	555	1110	9.9	
	19	Ø12	2	570	1140	10.1	
	20	Ø12	2	565	1130	10.0	
	21	Ø12	1	425	425	3.8	
	22	Ø12	1	315	315	2.8	
	23	Ø12	1	310	310	2.8	
	24	Ø10	2	545	1090	6.7	
	25	Ø10	2	510	1020	6.3	
	26	Ø10	2	560	1120	6.9	
	27	Ø12	2	240	480	4.3	
	28	Ø12	2	280	560	5.0	
	29	Ø12	4	150	600	5.3	
	30	Ø6	56	128	7168	15.9	
	Total+10%:						98.7
	Pórtico 90	31	Ø12	2	655	1310	11.6
		32	Ø12	2	670	1340	11.9
		33	Ø12	2	660	1320	11.7
		34	Ø10	2	510	1020	6.3
35		Ø12	1	375	375	3.3	
36		Ø12	1	370	370	3.3	
37		Ø10	2	645	1290	8.0	
38		Ø10	2	665	1330	8.2	
39		Ø10	2	655	1310	8.1	
40		Ø12	2	715	1430	8.8	
41		Ø12	2	275	550	4.9	
42		Ø12	2	175	350	3.1	
43		Ø12	2	180	360	3.2	
44		Ø6	67	128	8576	19.0	
Total+10%:						121.0	
Pórtico 92		45	Ø12	2	726	1452	12.9
		46	Ø12	1	535	535	4.7
		47	Ø10	2	726	1452	9.0
	48	Ø12	2	235	470	4.2	
	49	Ø12	2	185	370	3.3	
	50	Ø6	24	128	3072	6.8	
	Total+10%:						45.0
	Ø6: 69.3						
	Ø10: 83.7						
	Ø12: 222.8						
	Total: 385.8						

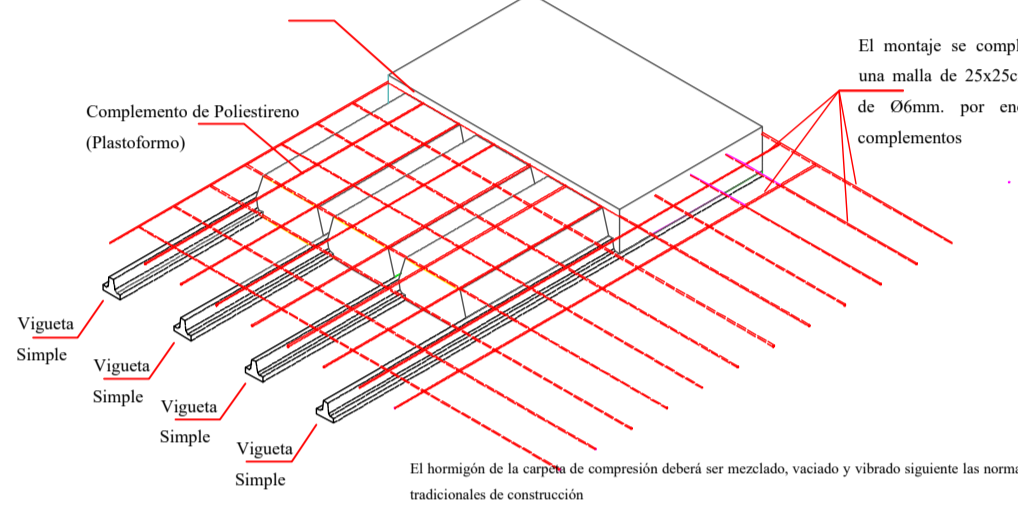
Elemento	Pos.	Diám.	No.	Long. (cm)	Total (cm)	AH-500CN (kg)	
Pórtico 93	1	Ø12	2	450	900	8.0	
	2	Ø12	2	440	880	7.8	
	3	Ø10	2	330	660	4.1	
	4	Ø12	2	335	670	5.9	
	5	Ø12	1	305	305	2.7	
	6	Ø12	1	255	255	2.3	
	7	Ø12	1	235	235	2.1	
	8	Ø10	2	435	870	5.4	
	9	Ø10	2	435	870	5.4	
	10	Ø10	2	330	660	3.9	
	11	Ø10	2	330	660	4.1	
	12	Ø12	2	480	960	8.5	
	13	Ø12	2	190	380	3.4	
	14	Ø12	2	125	250	2.2	
	15	Ø6	67	128	8576	19.0	
Total+10%:						93.3	
Pórtico 94	16	Ø12	2	605	1210	10.7	
	17	Ø12	2	455	910	8.1	
	18	Ø12	2	425	850	7.5	
	19	Ø12	2	395	790	7.0	
	20	Ø12	1	355	355	3.2	
	21	Ø10	2	310	620	3.8	
	22	Ø12	1	295	295	2.6	
	23	Ø12	1	240	240	2.1	
	24	Ø12	1	220	220	2.0	
	25	Ø10	2	600	1200	7.4	
	26	Ø10	2	455	910	5.6	
	27	Ø10	2	420	840	5.2	
	28	Ø12	2	380	760	4.8	
	29	Ø10	2	300	600	3.7	
	30	Ø12	2	285	570	4.5	
31	Ø12	2	220	440	3.9		
32	Ø12	2	180	360	3.2		
33	Ø12	2	160	320	2.8		
34	Ø12	2	125	250	2.2		
35	Ø6	73	128	9344	20.7		
Total+10%:						126.6	
Pórtico 95	36	Ø12	2	720	1440	12.8	
	37	Ø12	2	555	1110	9.9	
	38	Ø12	2	535	1070	9.5	
	39	Ø12	1	390	390	3.5	
	40	Ø12	1	315	315	2.7	
	41	Ø10	2	530	1060	6.5	
	42	Ø12	3	370	1110	9.9	
	43	Ø12	2	380	760	6.8	
	44	Ø12	2	145	290	2.6	
	45	Ø6	41	128	5248	11.6	
	Total+10%:						82.2
	Pórtico 97	46	Ø12	2	605	1210	10.7
		47	Ø12	1	440	440	3.9
		48	Ø12	2	665	1330	11.9
		49	Ø12	4	155	620	5.5
50							



DETALLE LOSA (EN PLANTA)



DETALLE LOSA (PERSPECTIVA)



ESCALA: 1:75

DETALLE LOSA ALIVIANADA (hLA=20cm) ESCALA 1:5

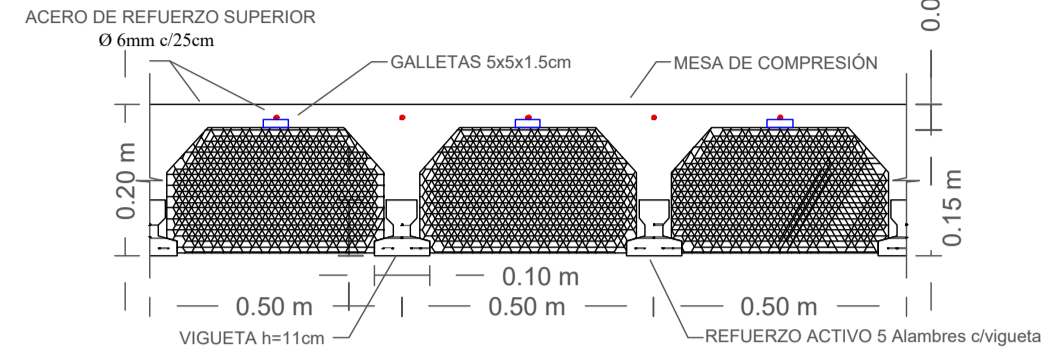
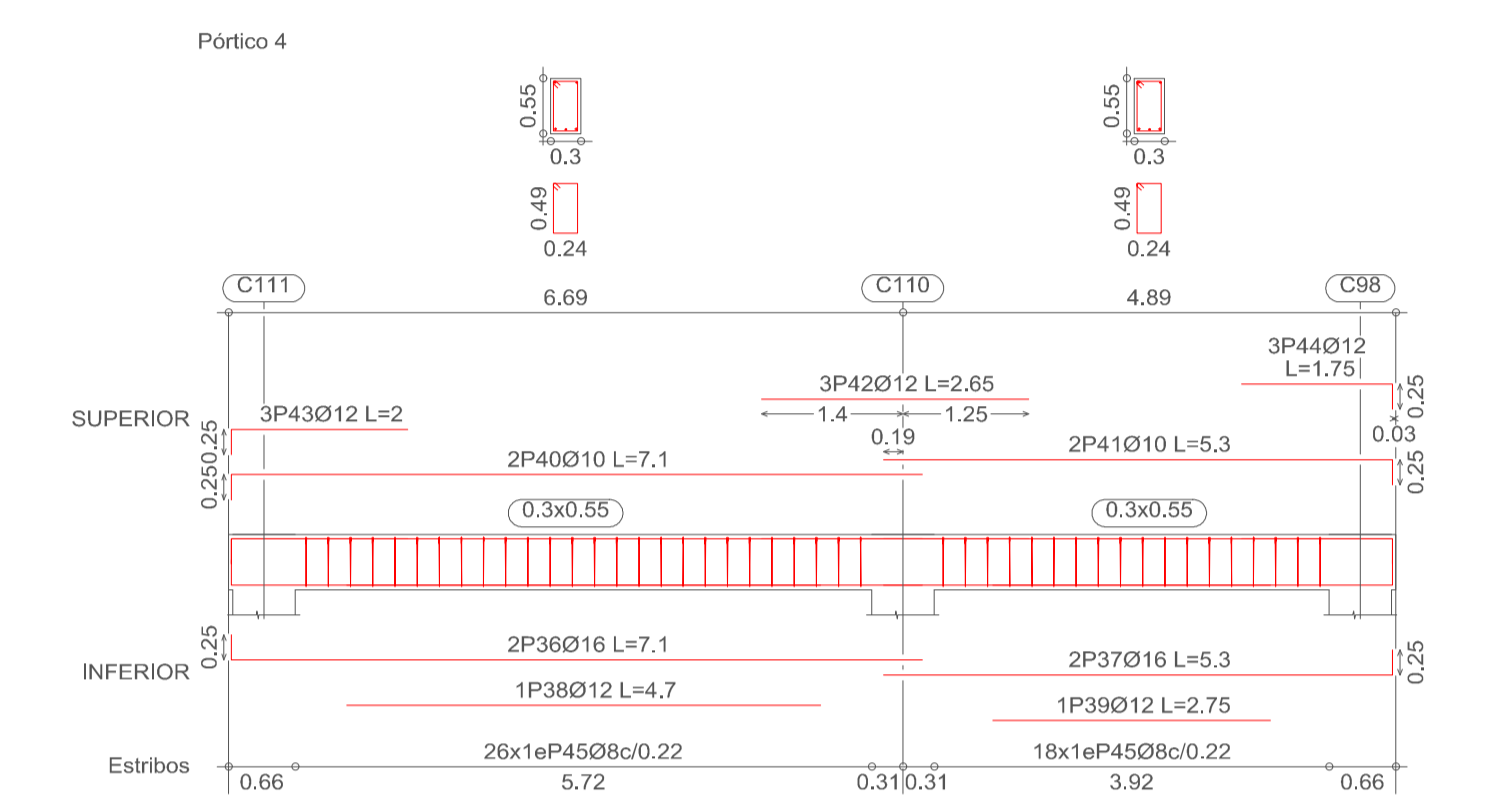
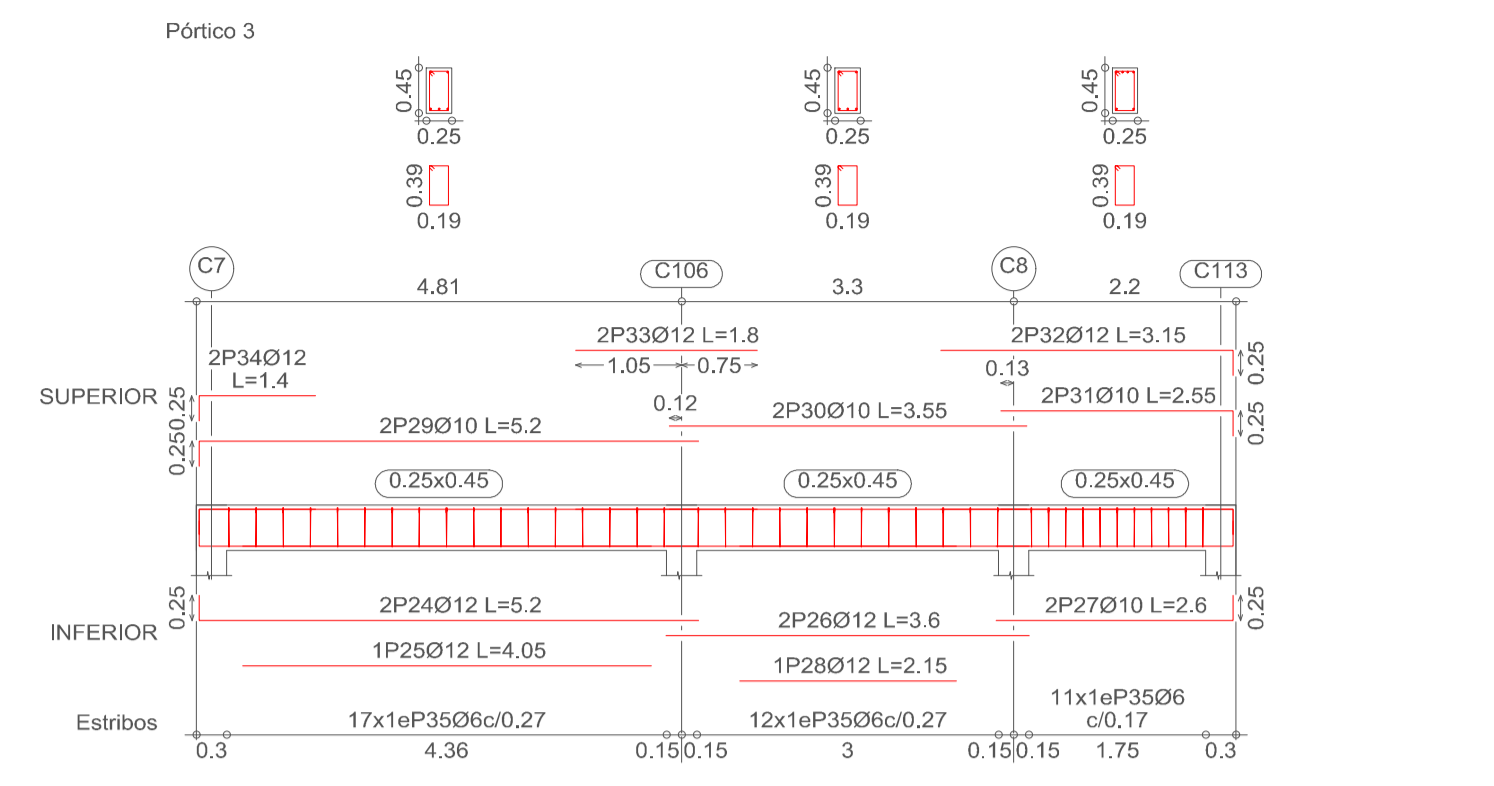


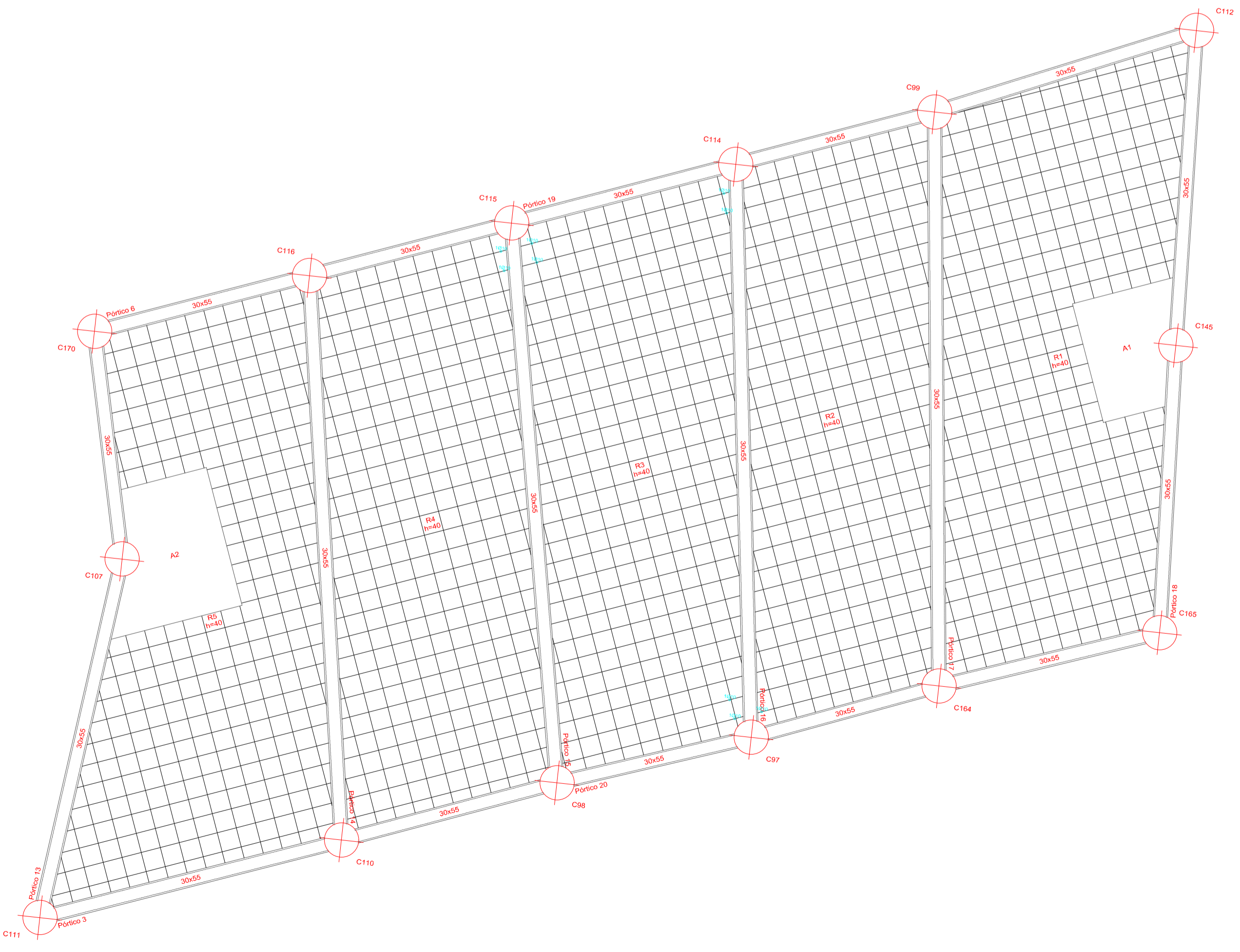
Tabla de características de forjados de viguetas (Grupo 5)
FORJADO DE VIGUETAS DE HORMIGÓN
 Canto de bovedilla: 15 cm
 Espesor capa compresión: 5 cm
 Intereje: 50 cm
 Bovedilla: De poliestireno
 Ancho del nervio: 12 cm
 Volumen de hormigón: 0,098 m³/m²
 Peso propio: 2,40 kN/m² (Simple), 3,12 kN/m² (Doble)
 Nota: Consulte los detalles referentes a enlaces con forjados de la estructura principal y de las zonas macizadas.

Resumen Acero NIVEL CUBIERTA		Long. total (m)	Peso+10% (kg)
Armadura longitudinal inferior AH-500CN		Ø8	29,8
Total+10%:		12,9	13

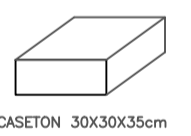
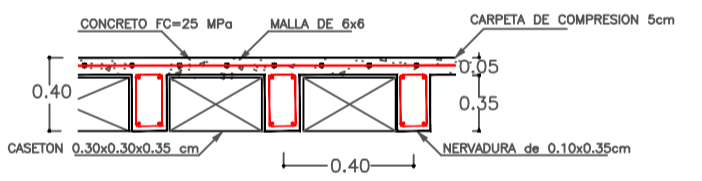
Elemento	Pos.	Diám. (cm)	No.	Long. (cm)	Total (cm)	AH-500CN (kg)
Armadura longitudinal inferior	1	Ø8	5	240	1200	4,7
	2	Ø8	2	310	620	2,4
	3	Ø8	3	175	525	2,1
	4	Ø8	1	155	155	0,6
	5	Ø8	1	145	145	0,6
	6	Ø8	1	330	330	1,3
Total+10%:				12,9		
Ø8:				12,9		
Total:				12,9		



ESCALA: 1:75

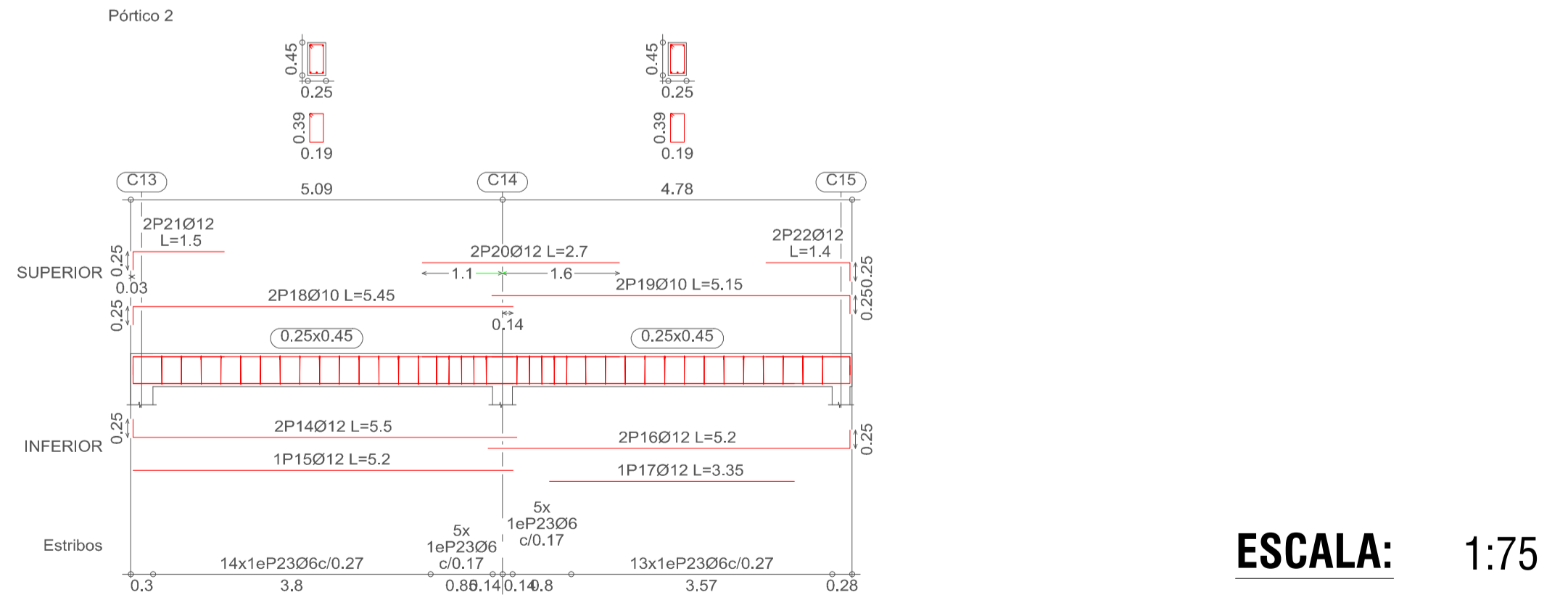
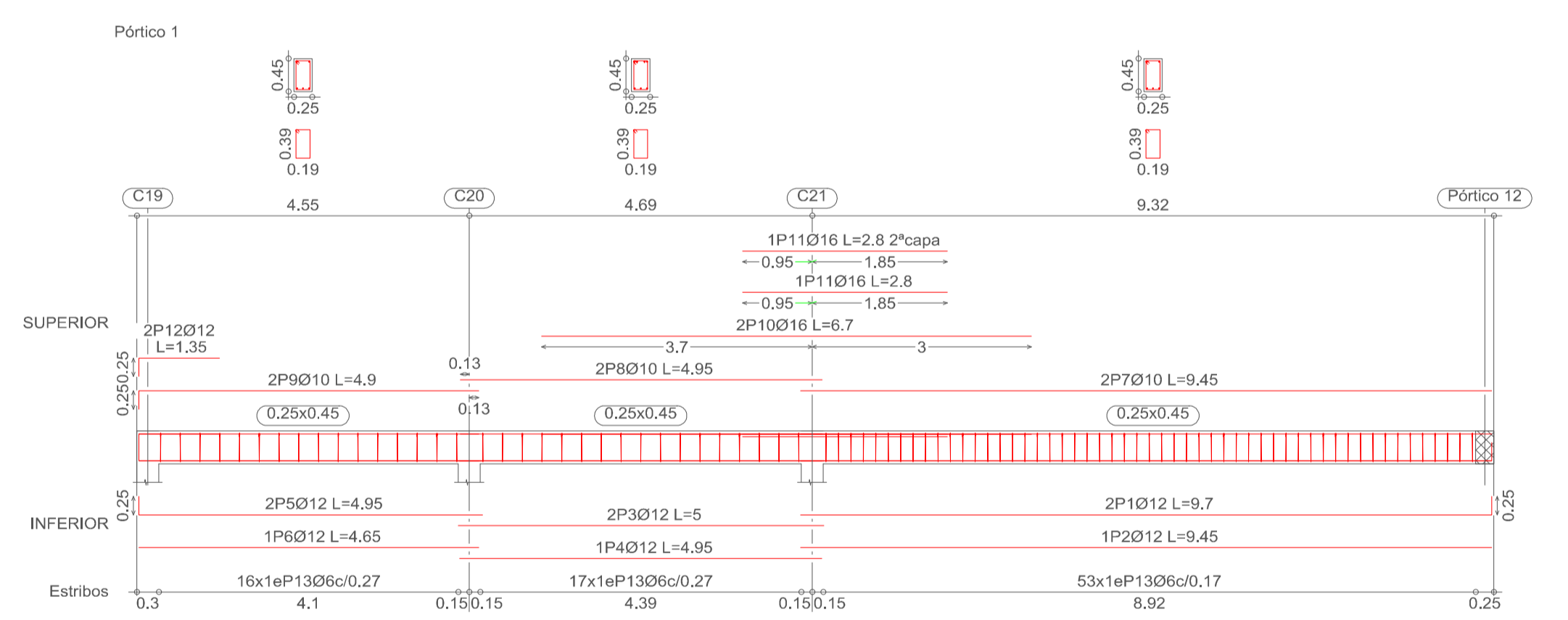


DETALLE LOSA RETICULAR (hLR=40cm) ESCALA 1:5

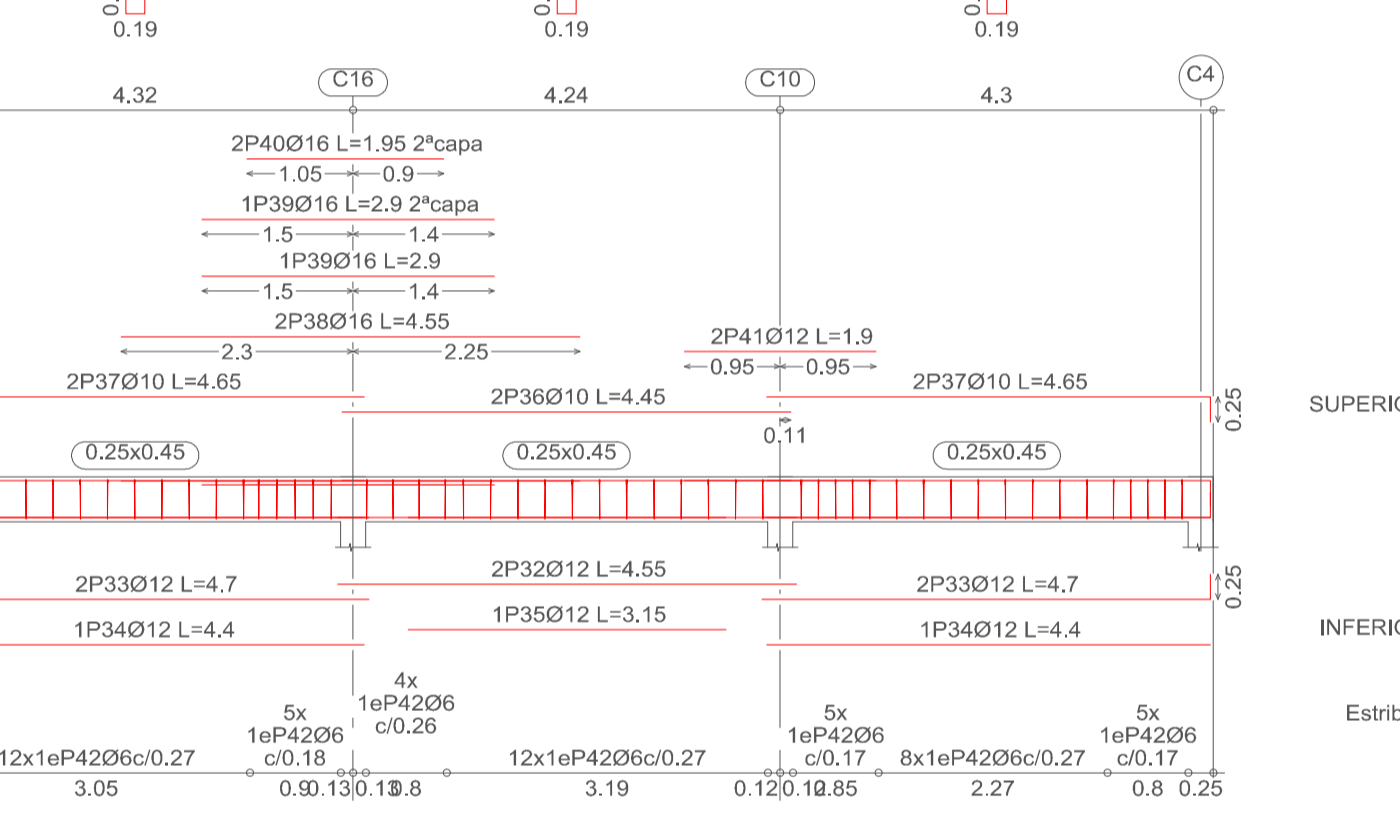
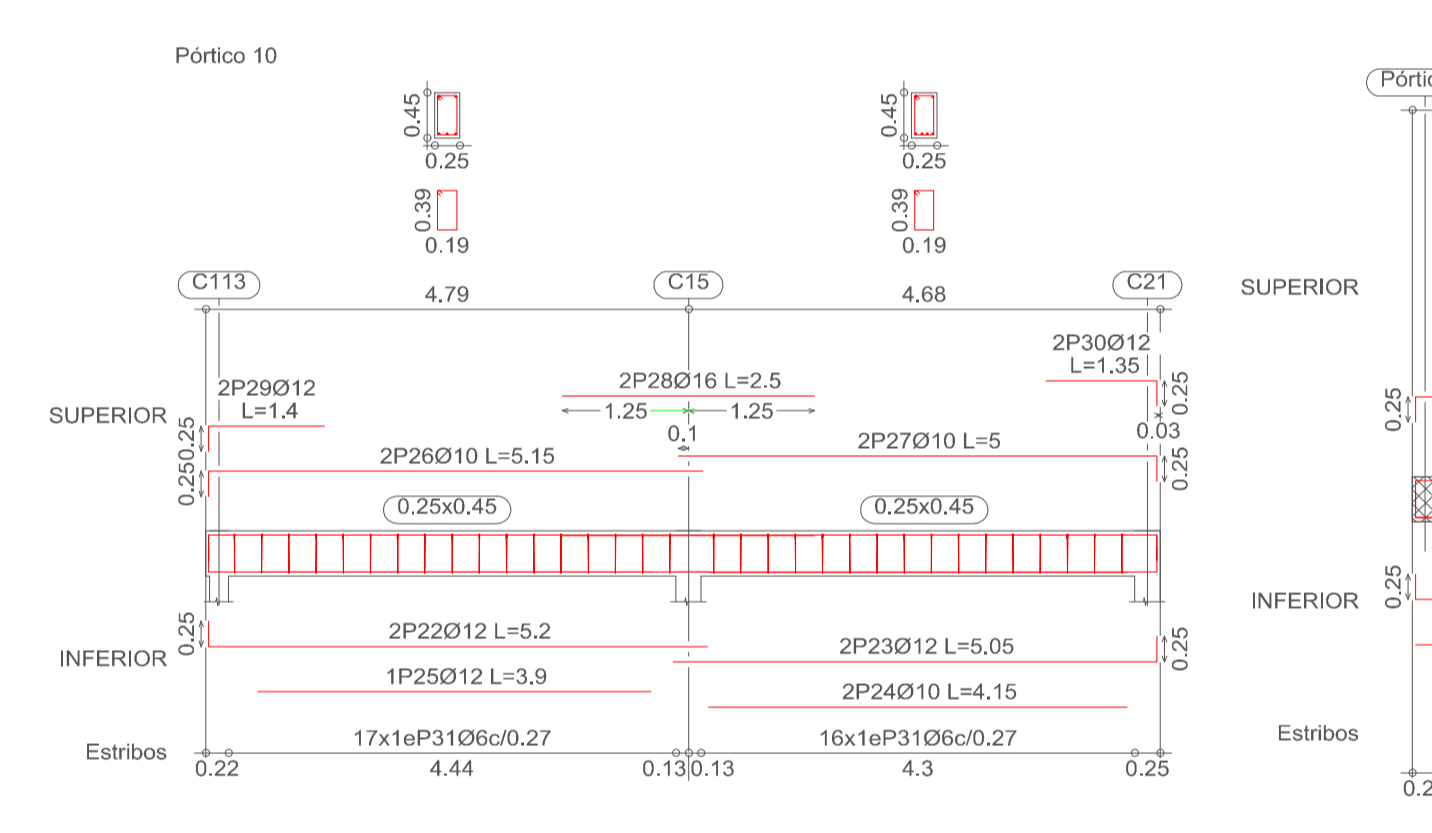
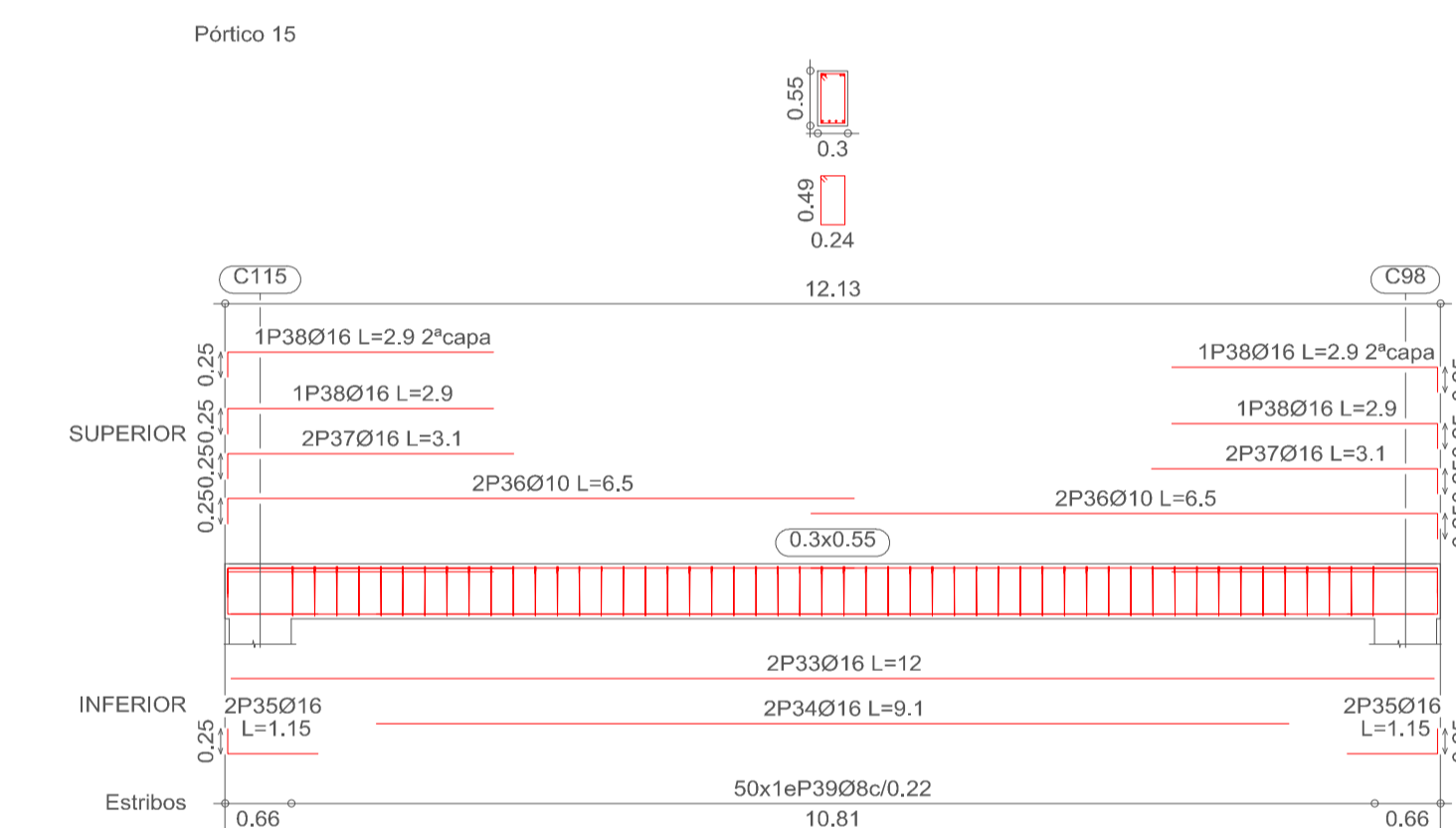
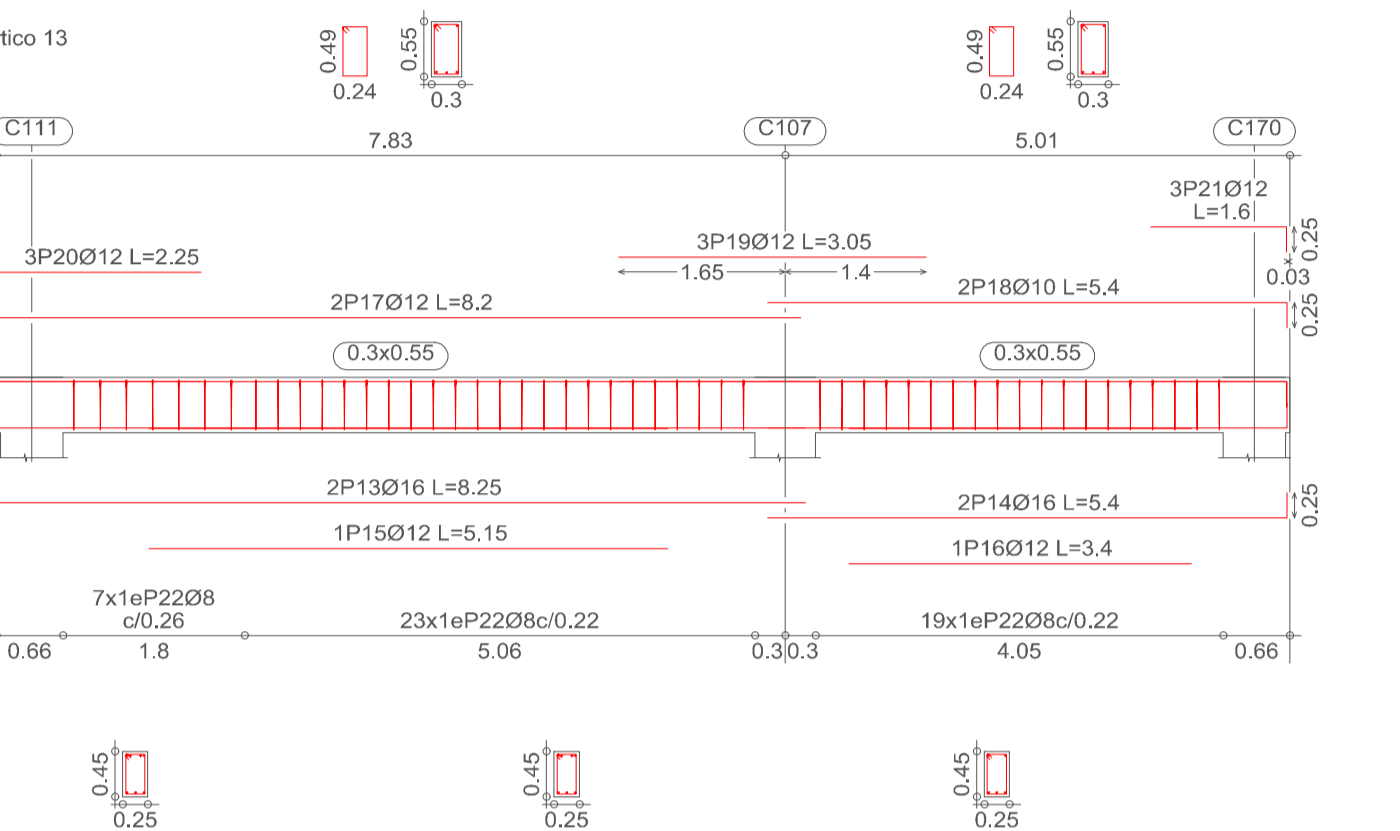
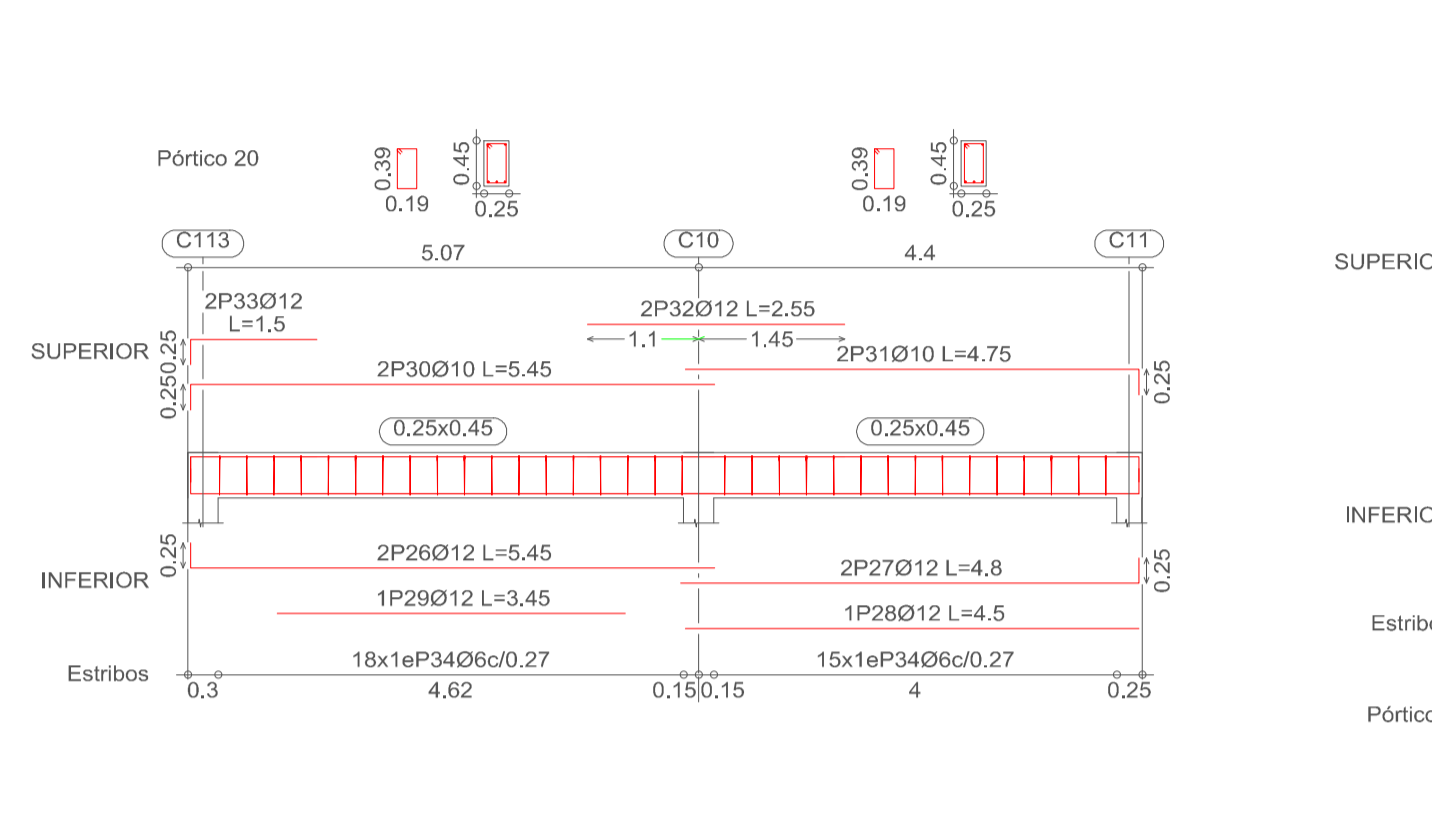
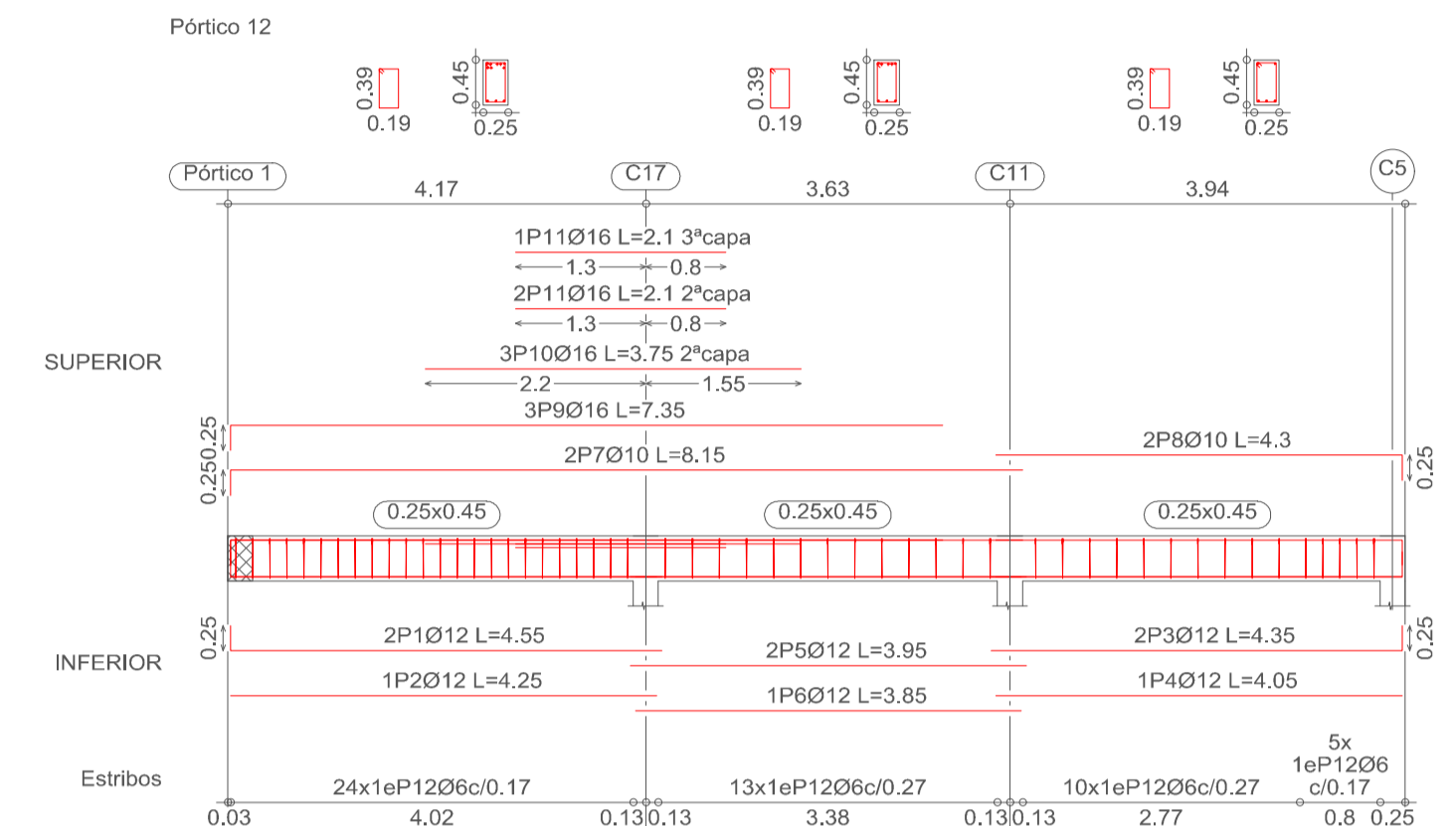
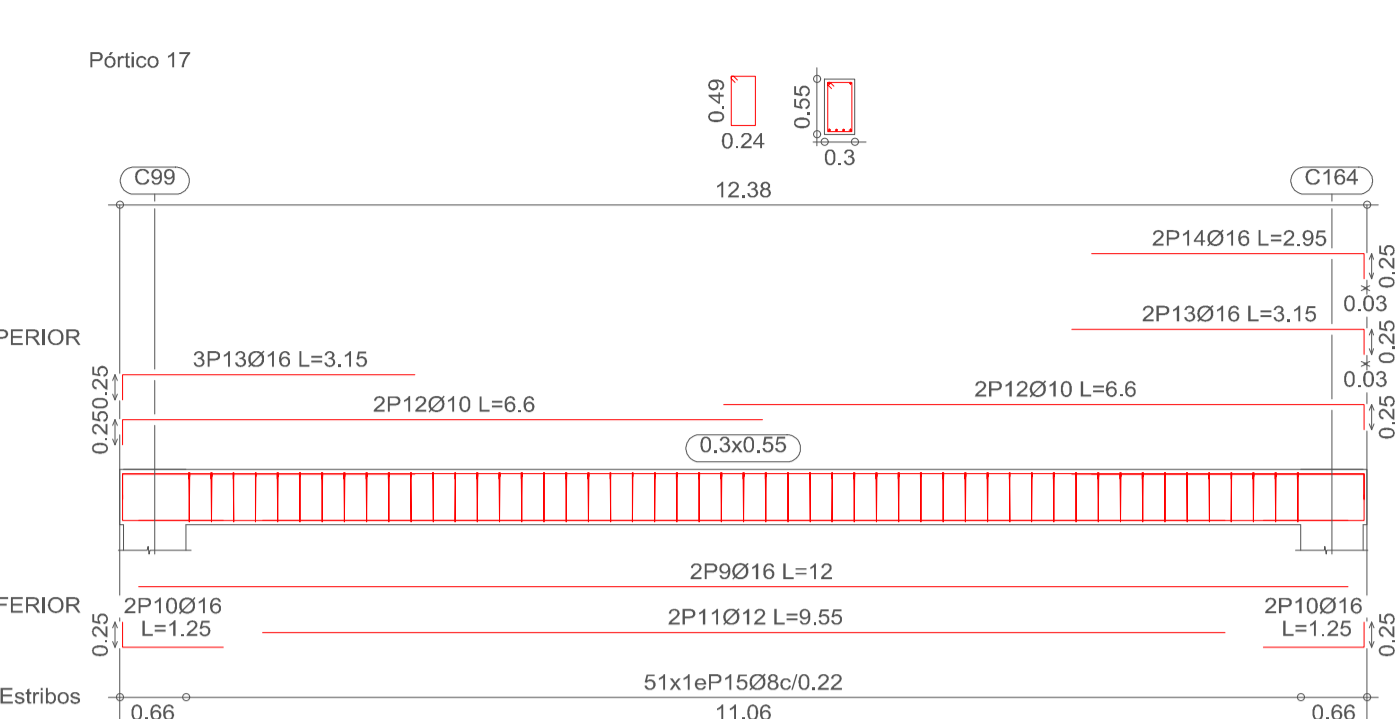
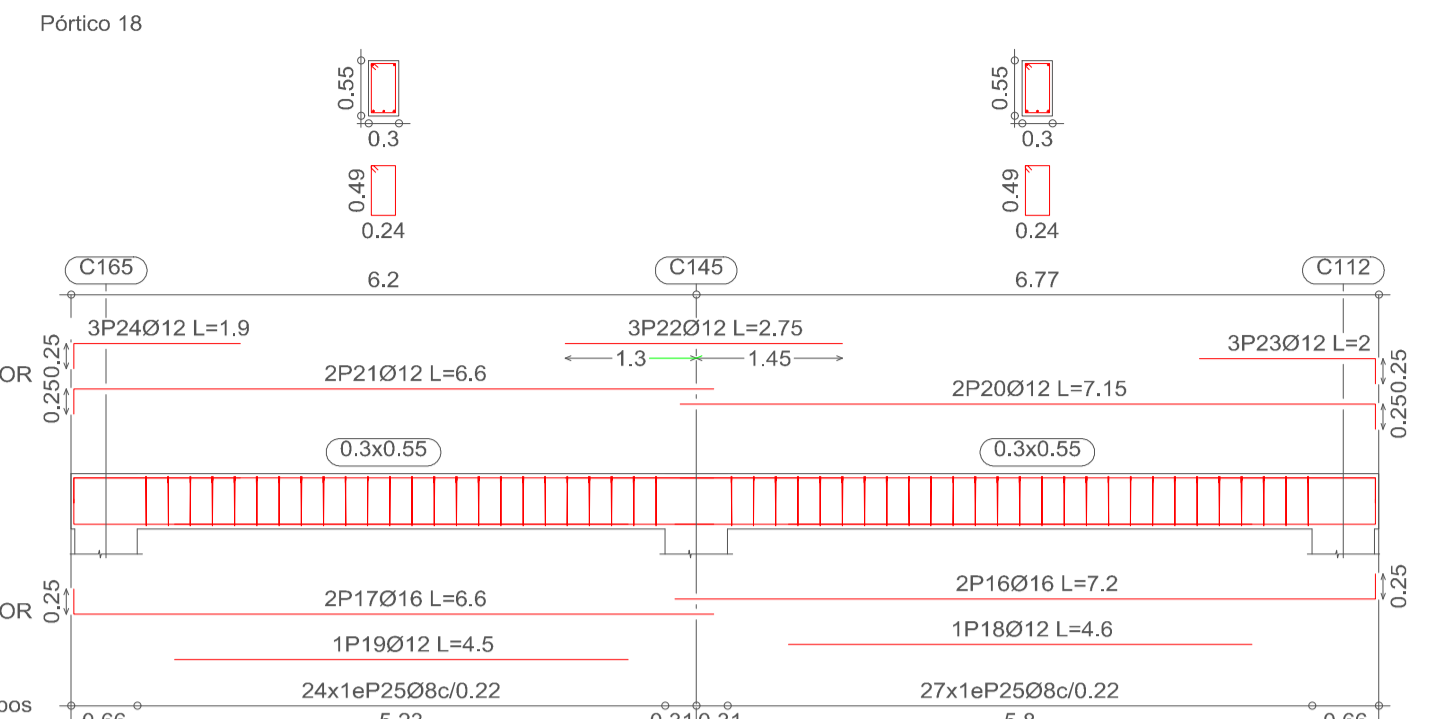
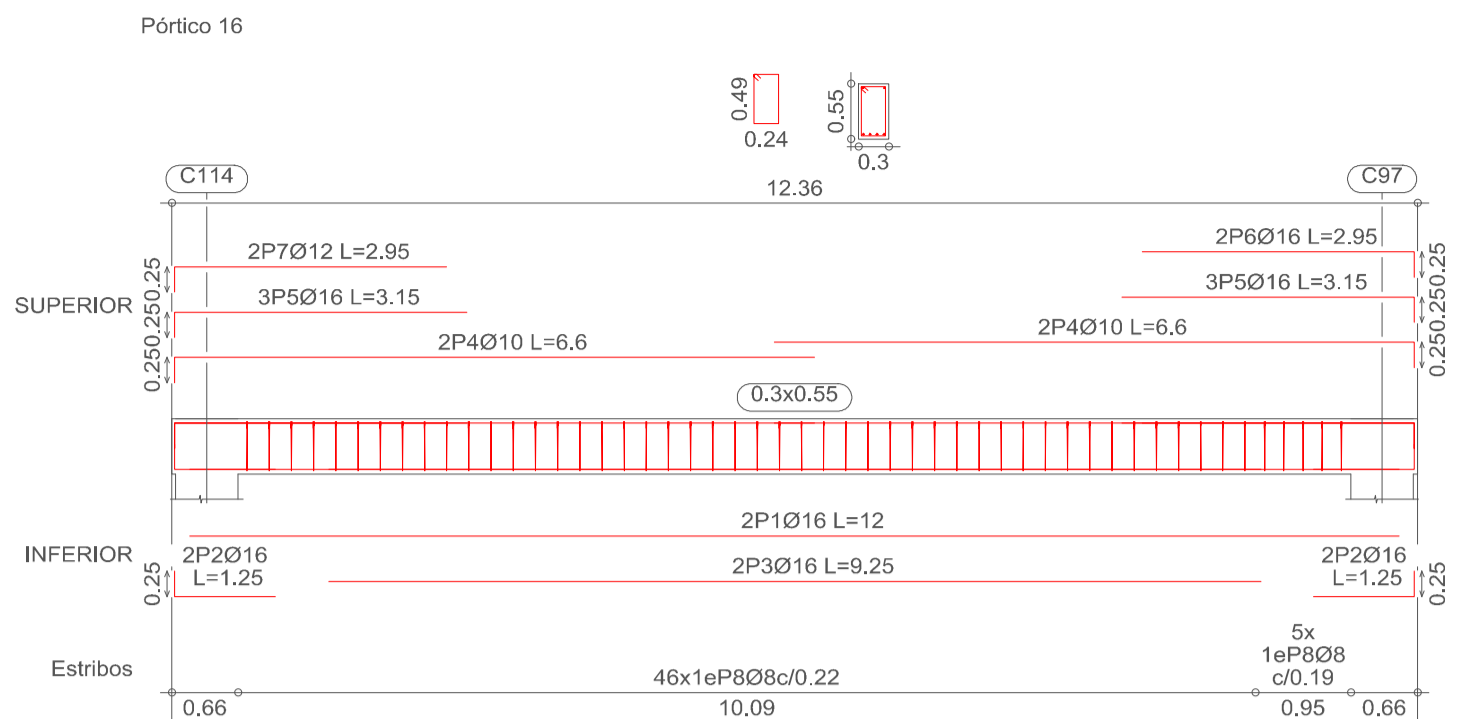


NIVEL CUBIERTA
 Armadura longitudinal inferior
 Hormigón: H-25 , Control Normal
 AH-500 , Control Normal
 Armadura base en nervios de reticular
 Long. Inferior: 1Ø12
 Armadura base en ábacos (por cuadrícula)
 Long. Inferior: 2Ø8
 No detallada en plano ni incluida en la medición

ESCALA: 1:75



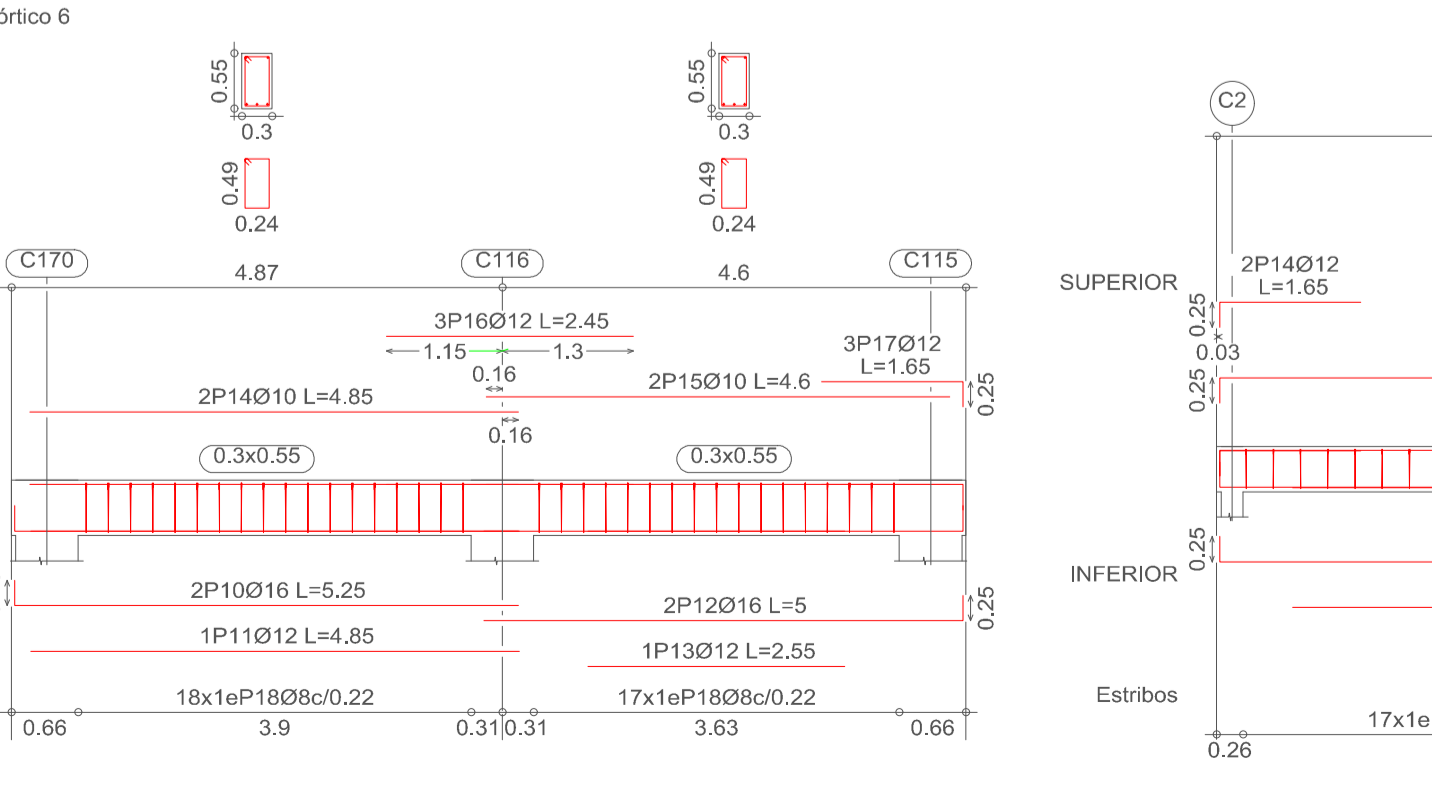
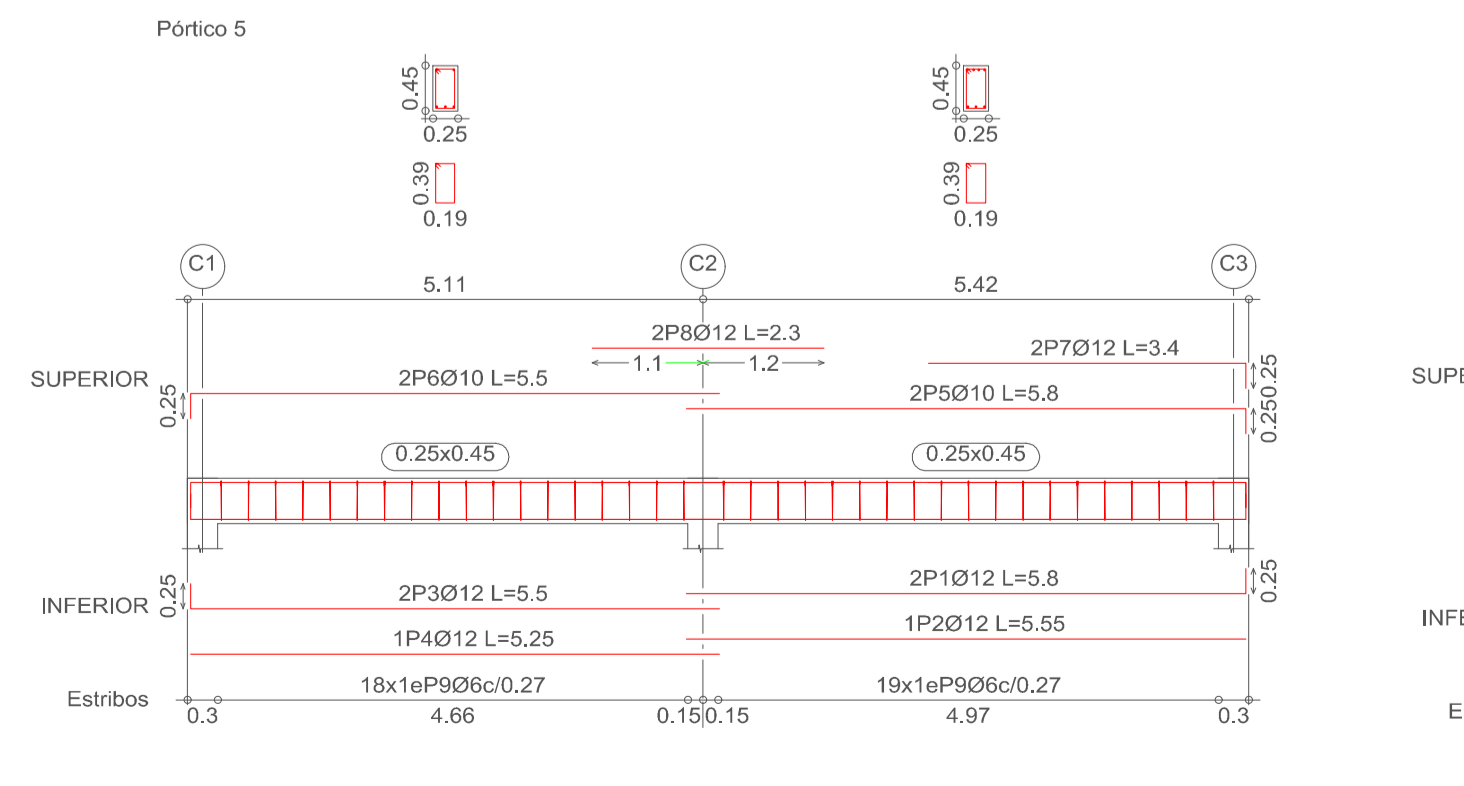
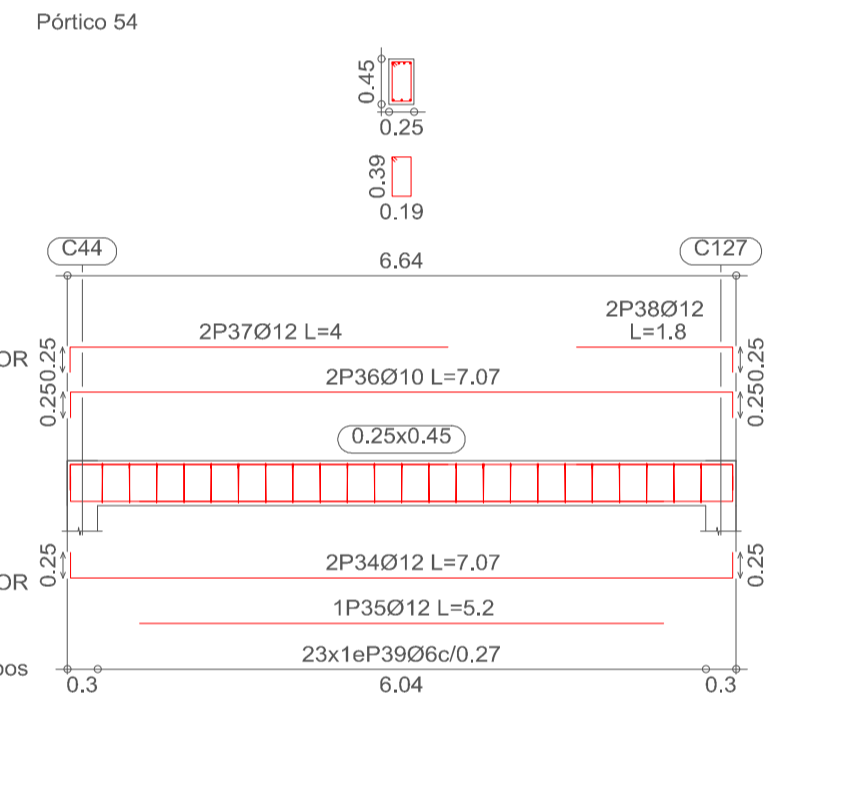
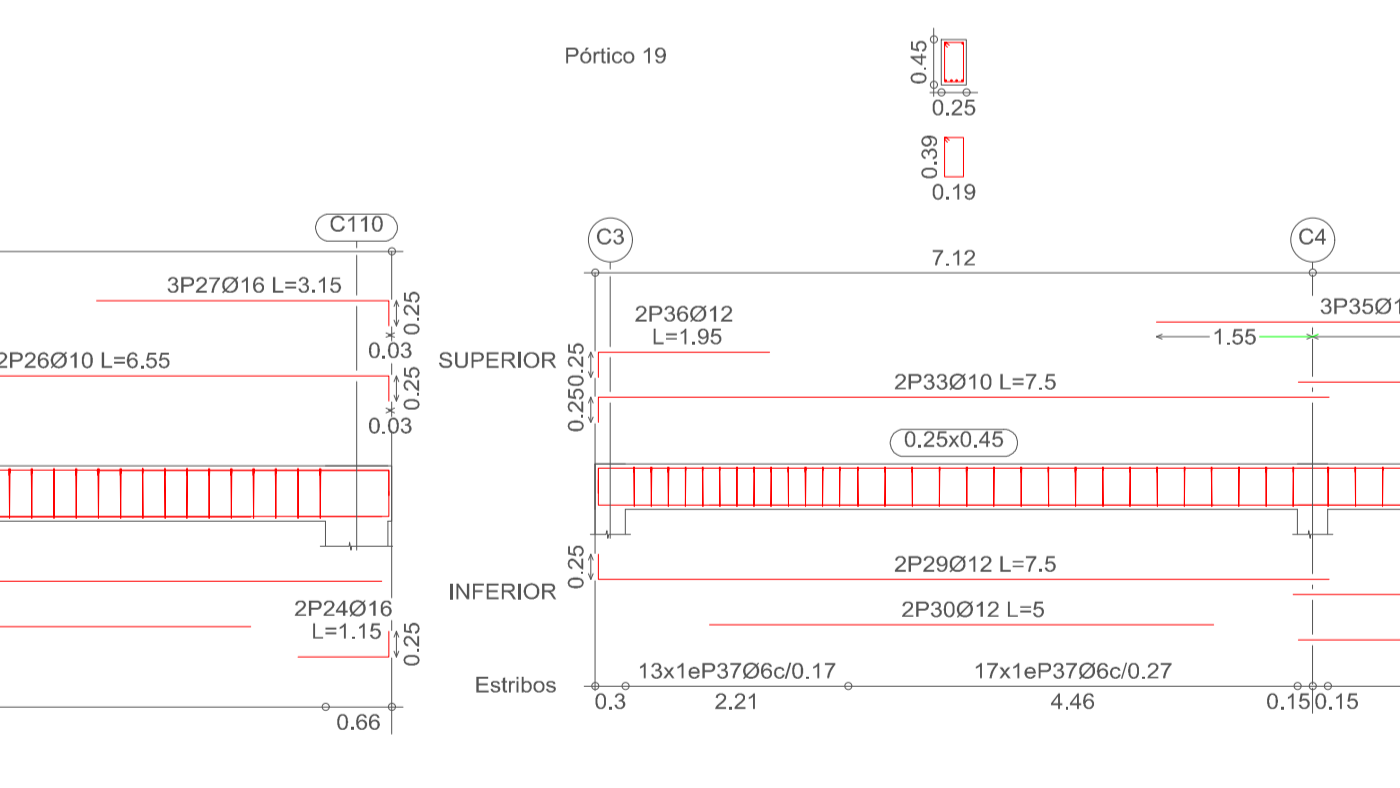
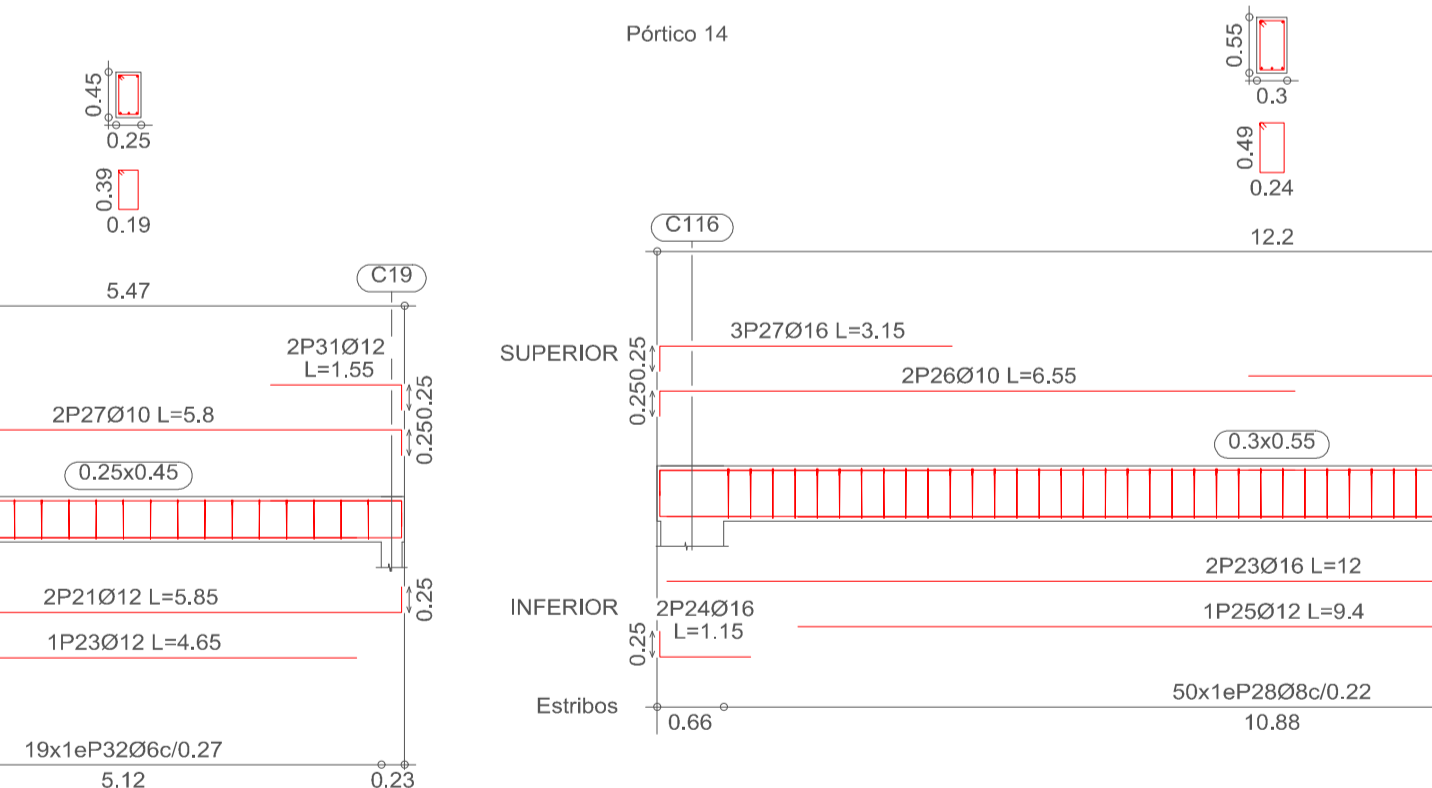
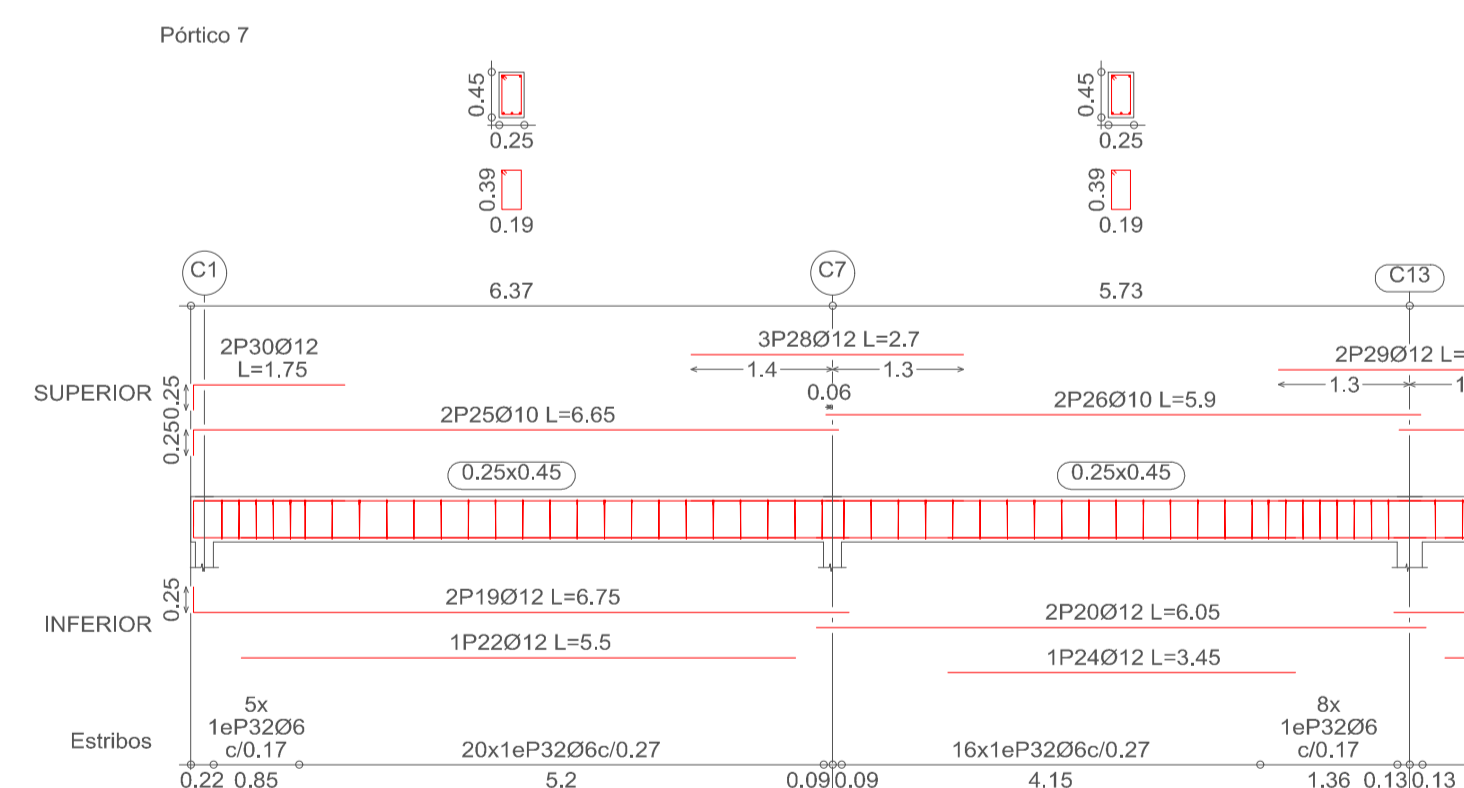
UNIVERSIDAD AUTÓNOMA "JUAN MISAEL SARACHO" FACULTAD DE CIENCIAS Y TECNOLOGÍA		
MATERIA: CIV - 502 PROYECTO ING. CIVIL II (M. ESTRUCTURAS)		
PROYECTO: DISEÑO ESTRUCTURAL CONSTRUCCIÓN CENTRO INTEGRAL SOCIAL Y CULTURAL ENTRE RÍOS		
DESCRIPCIÓN: DESPLIEGUE DE VIGAS NIVEL SOBRECIMIENTO 2 Y 3	UNIVERSITARIO: ANDRÉS FERNÁNDEZ FIGUEROA	LÁMINA: 17
FECHA: MAYO 2023	ESCALA: INDICADA	

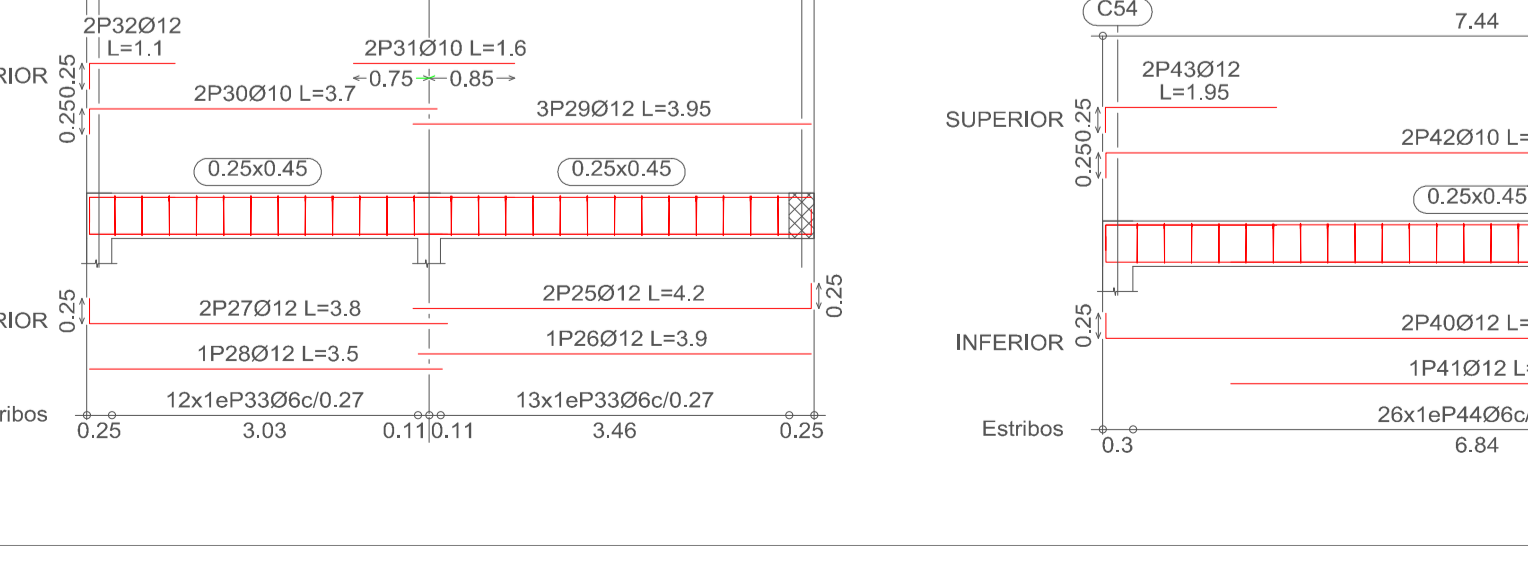
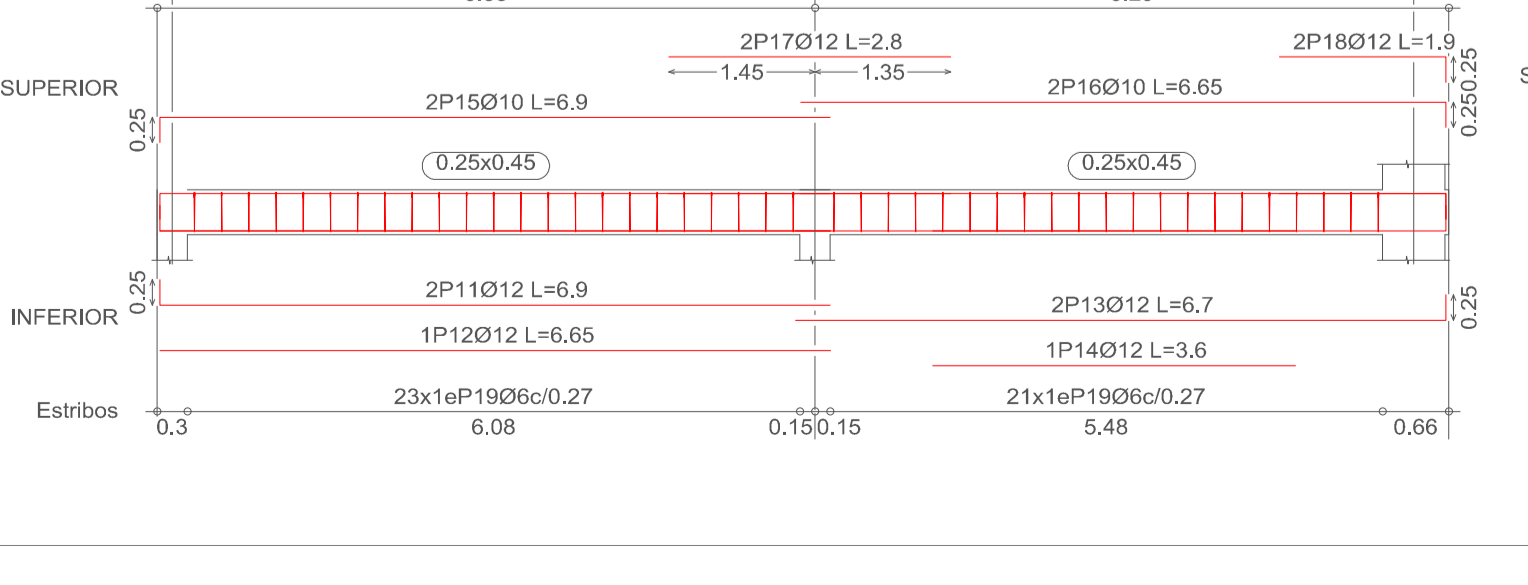
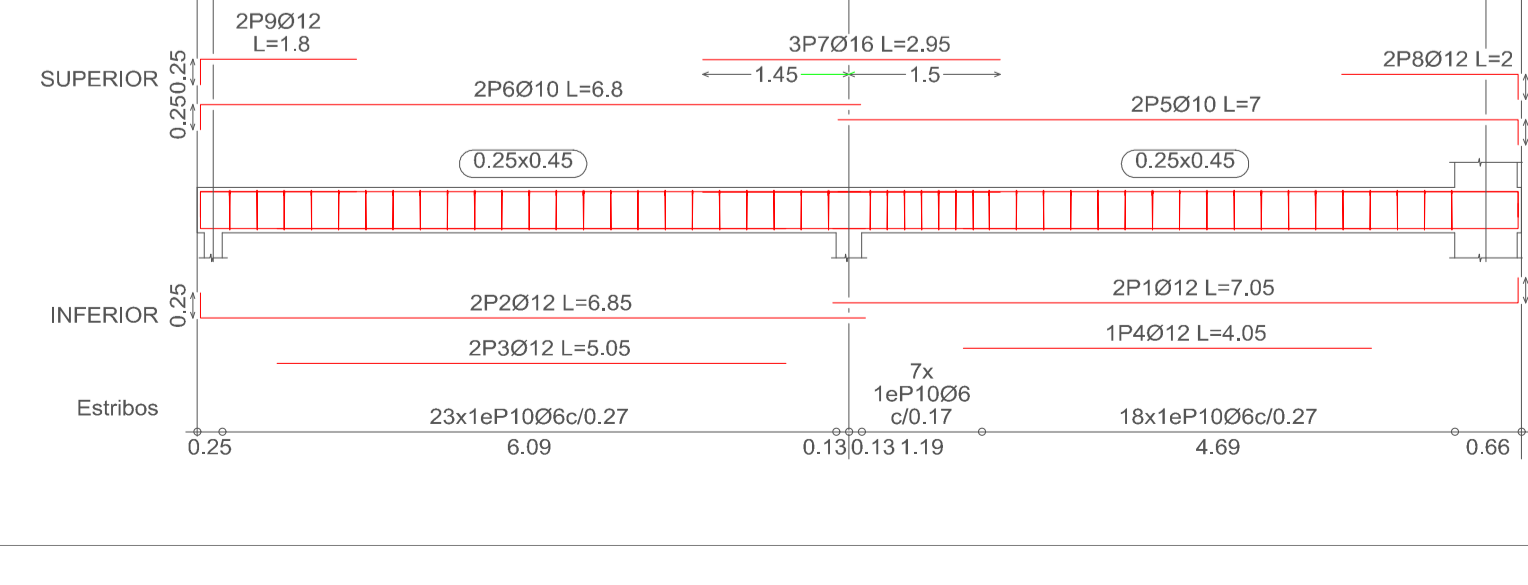
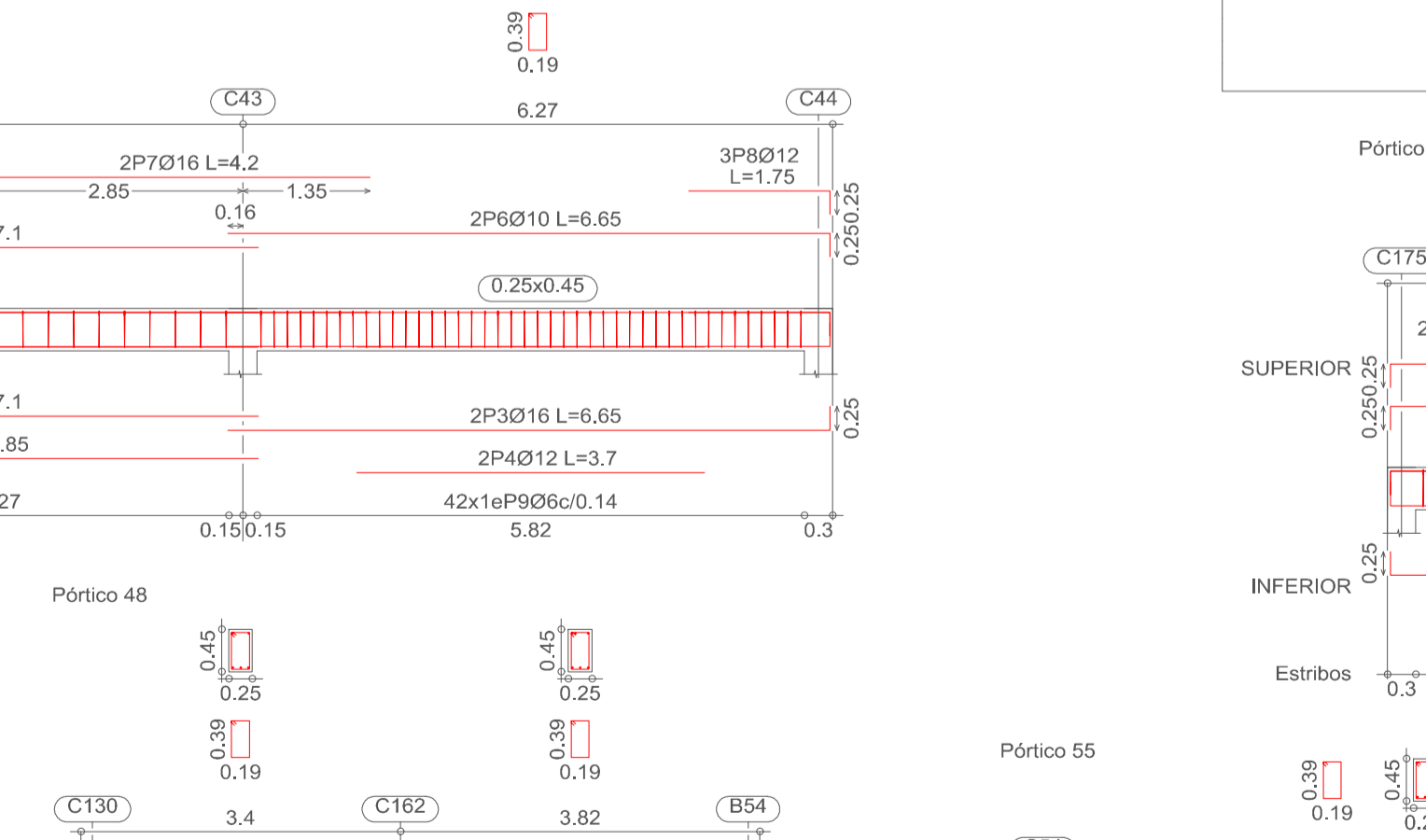
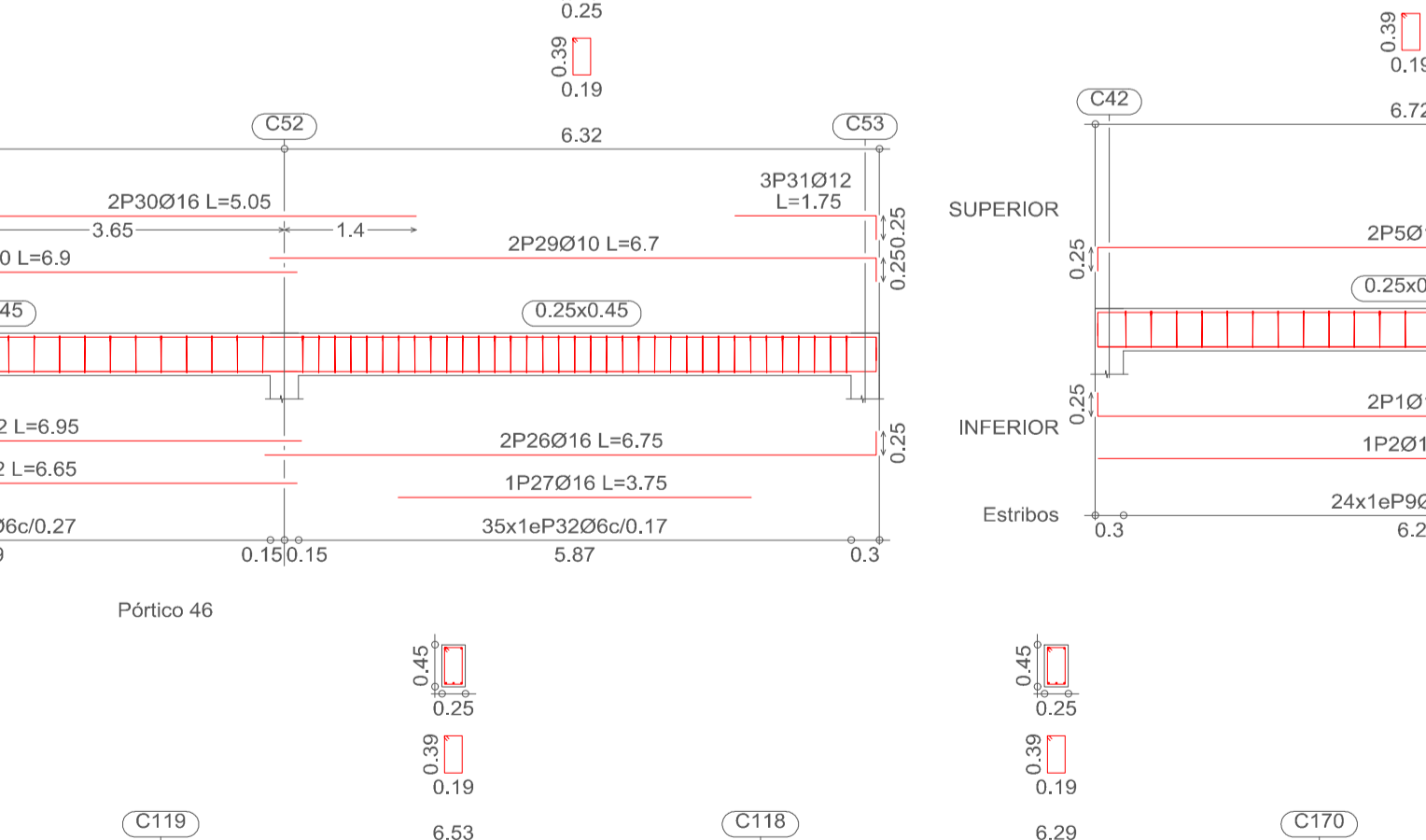
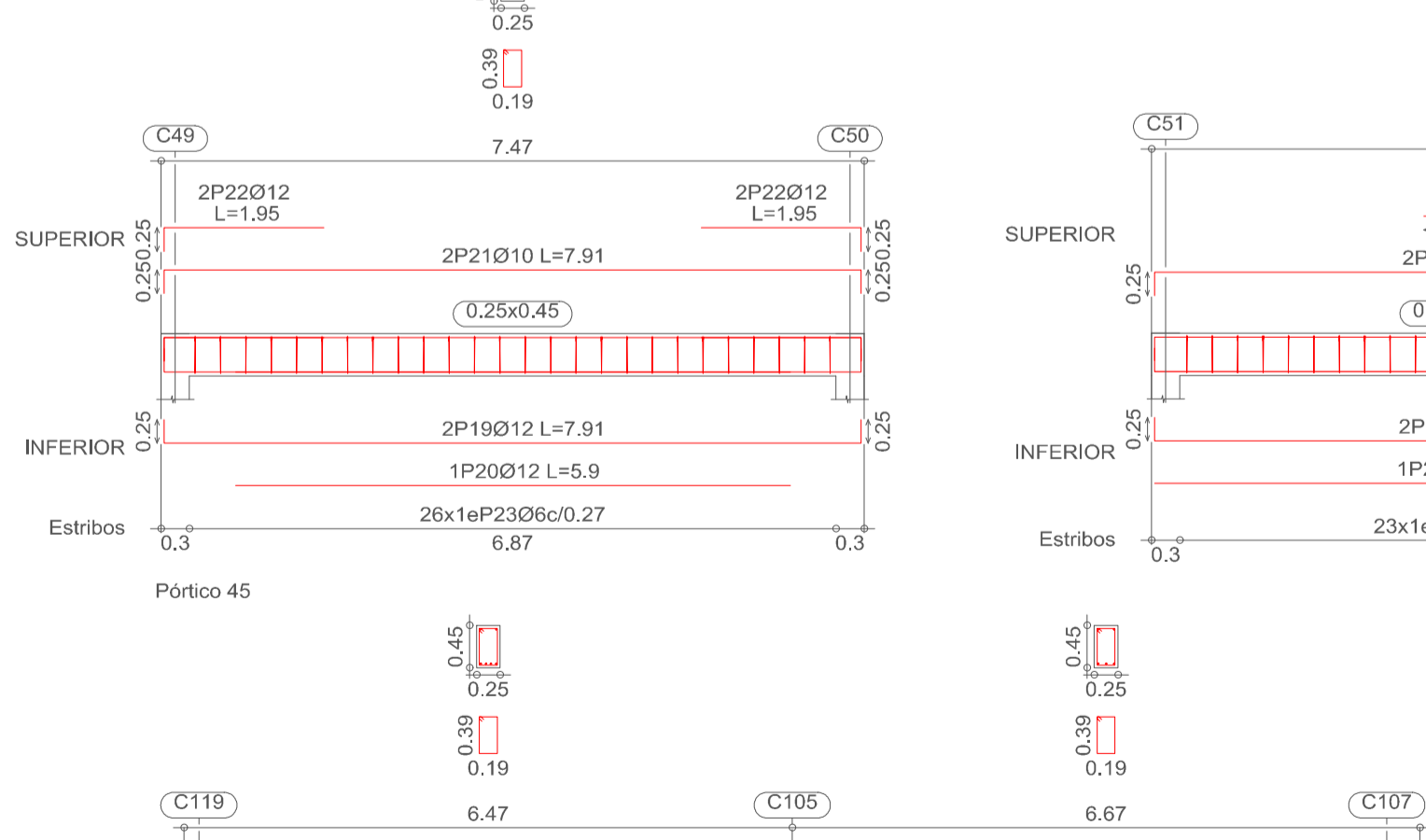
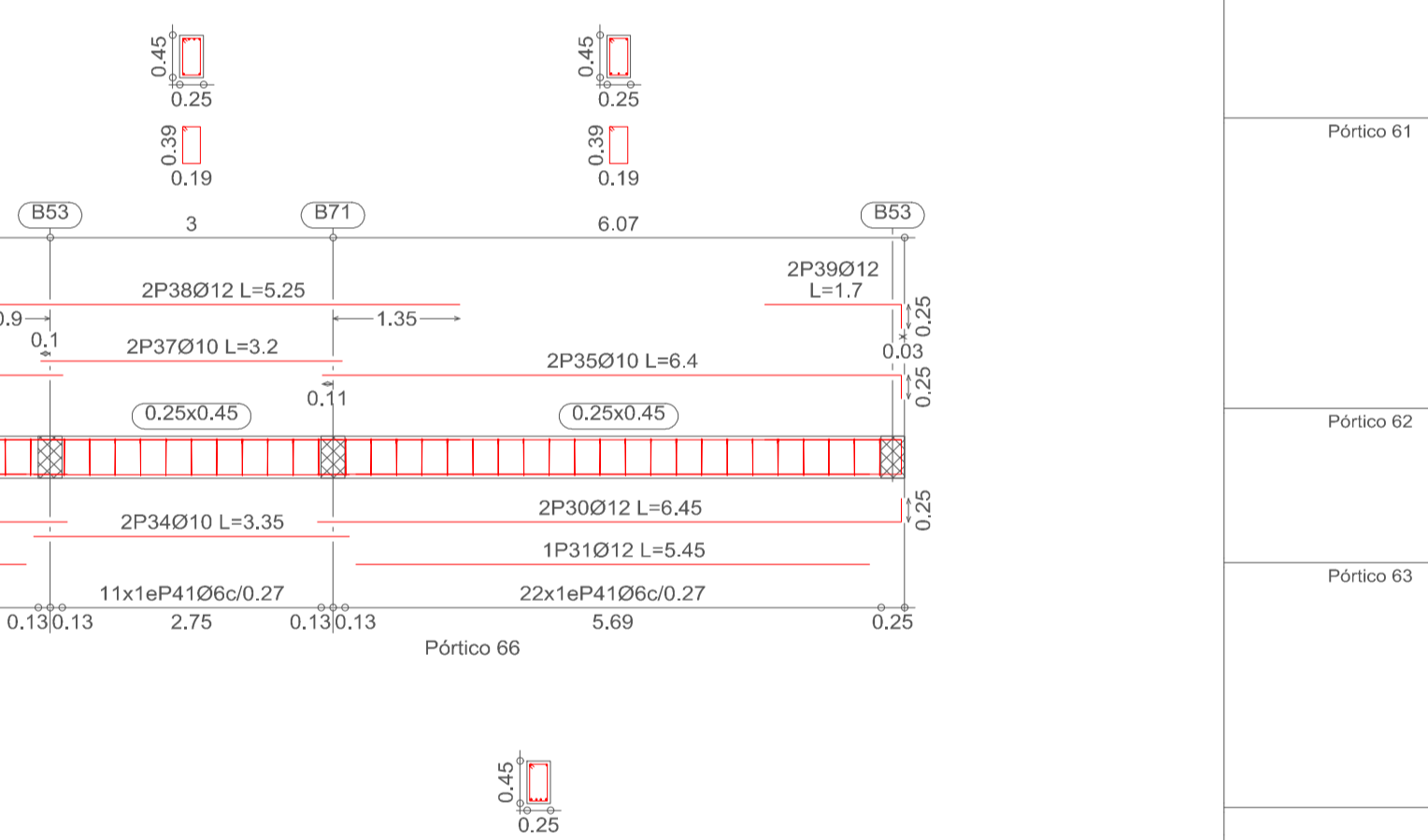
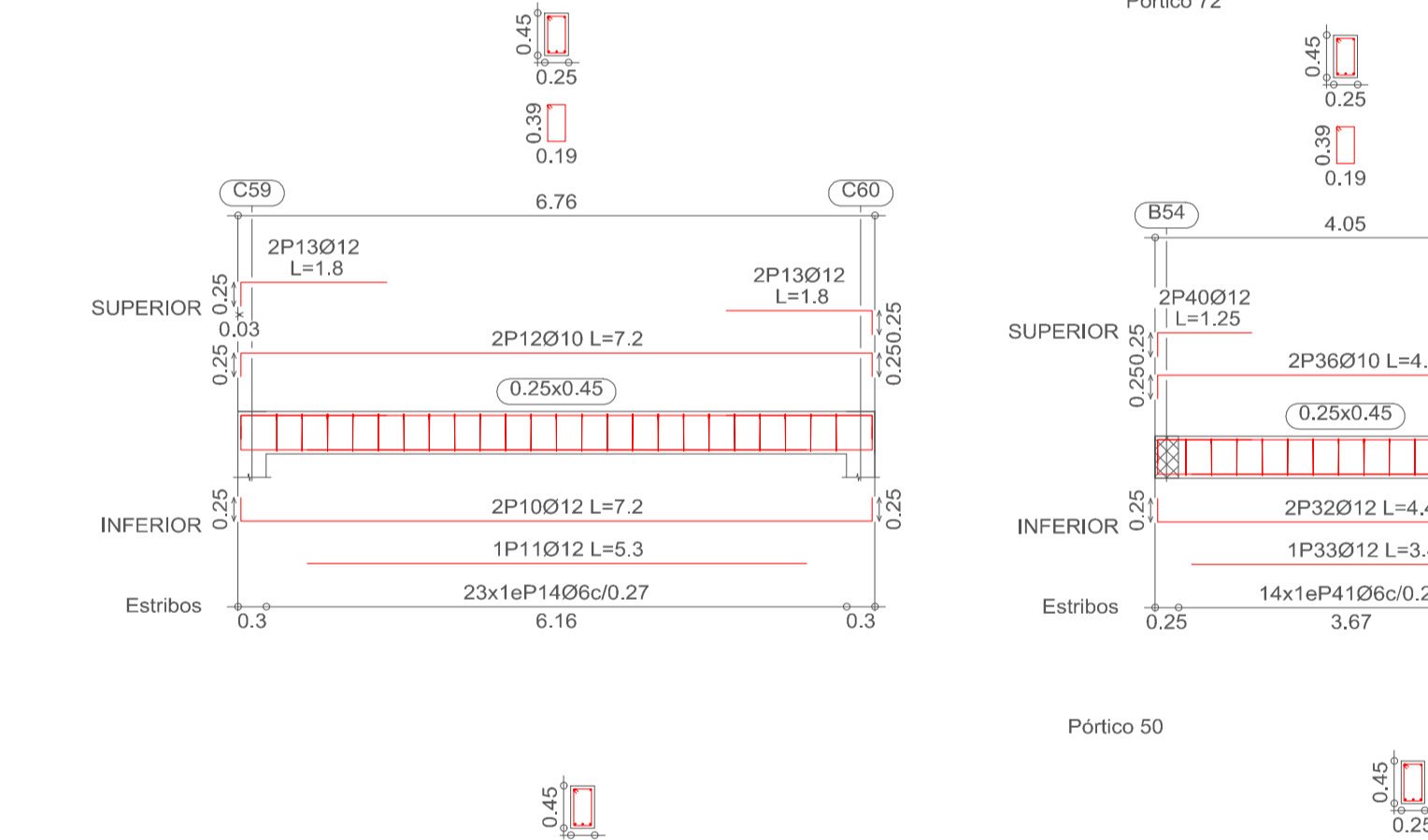
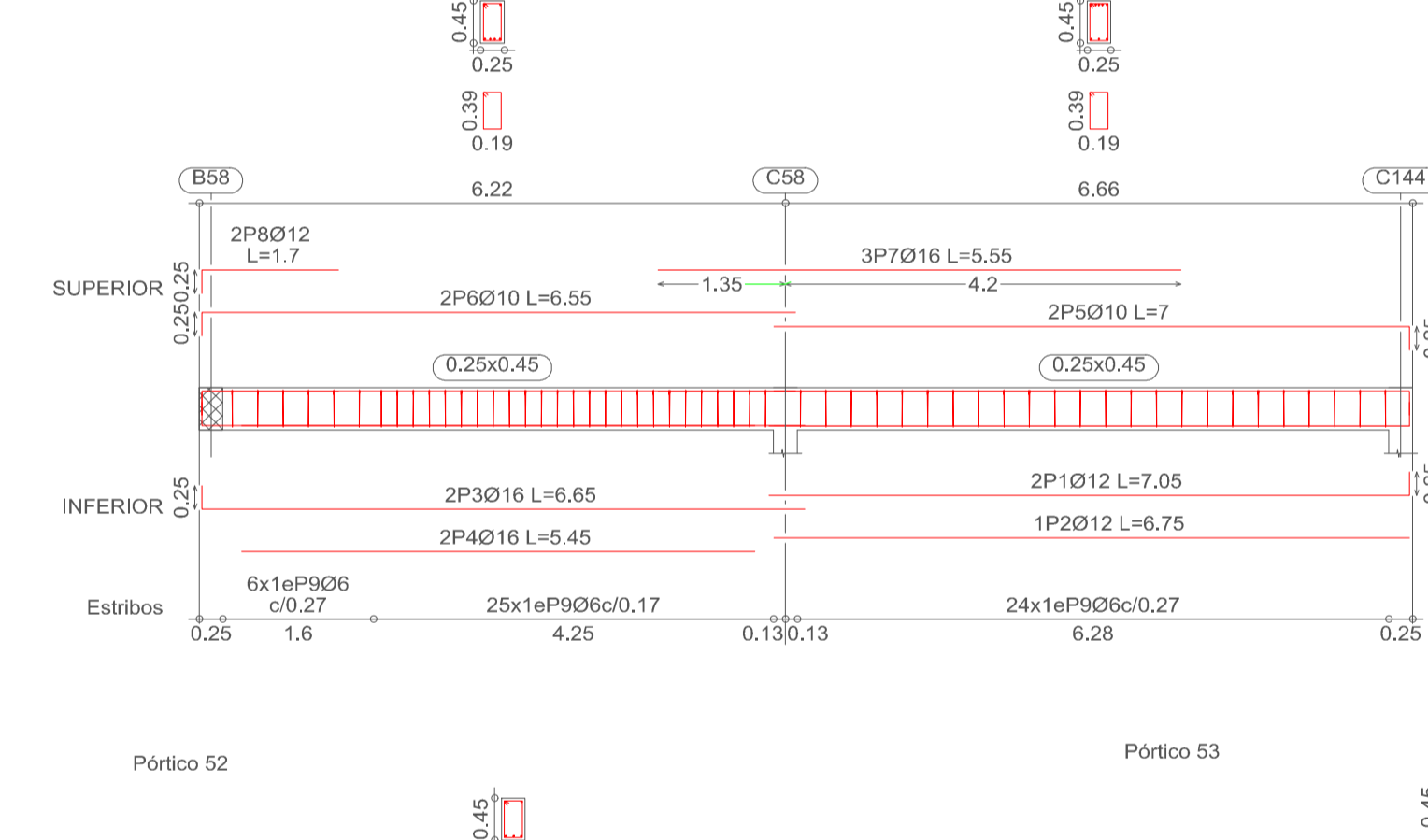
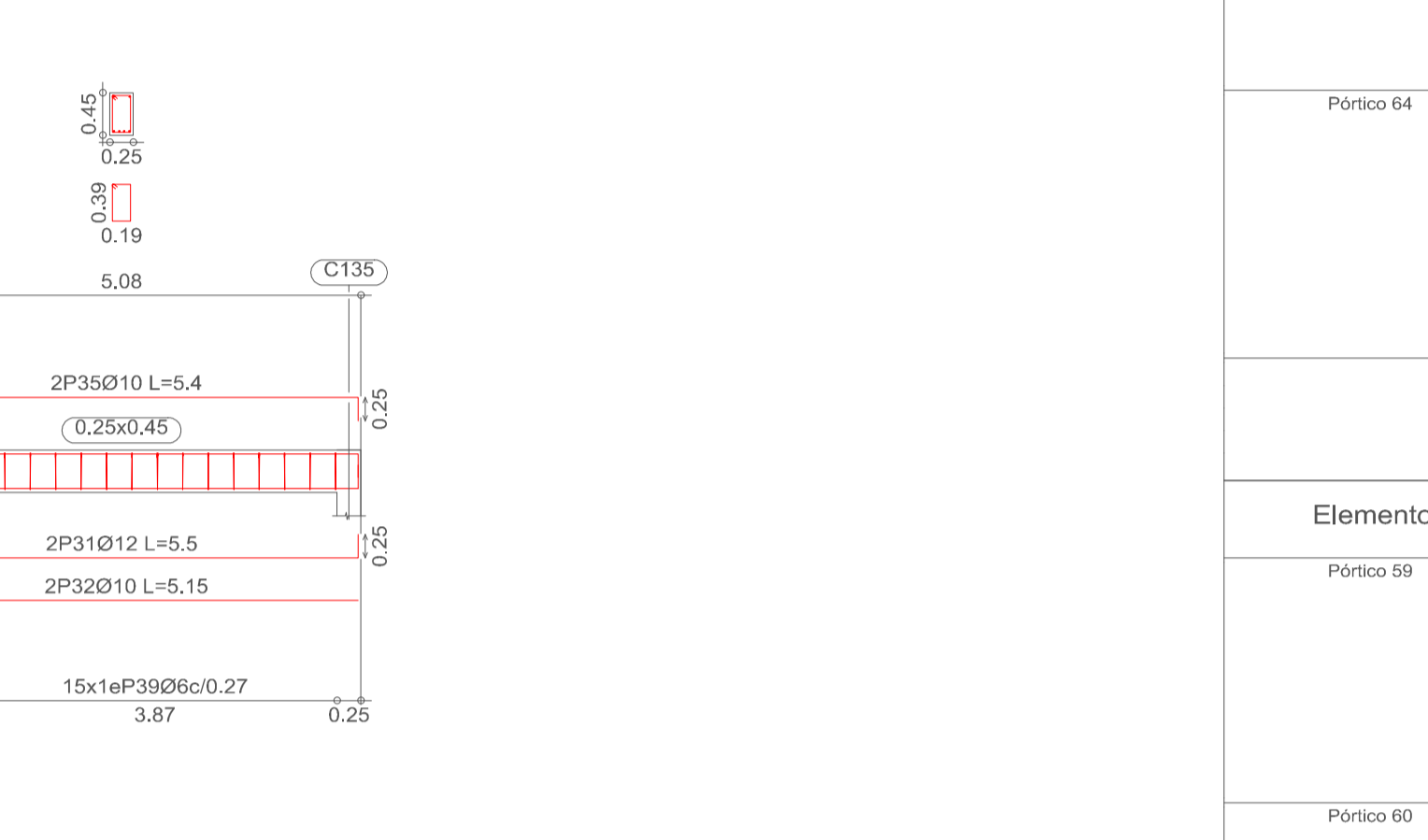
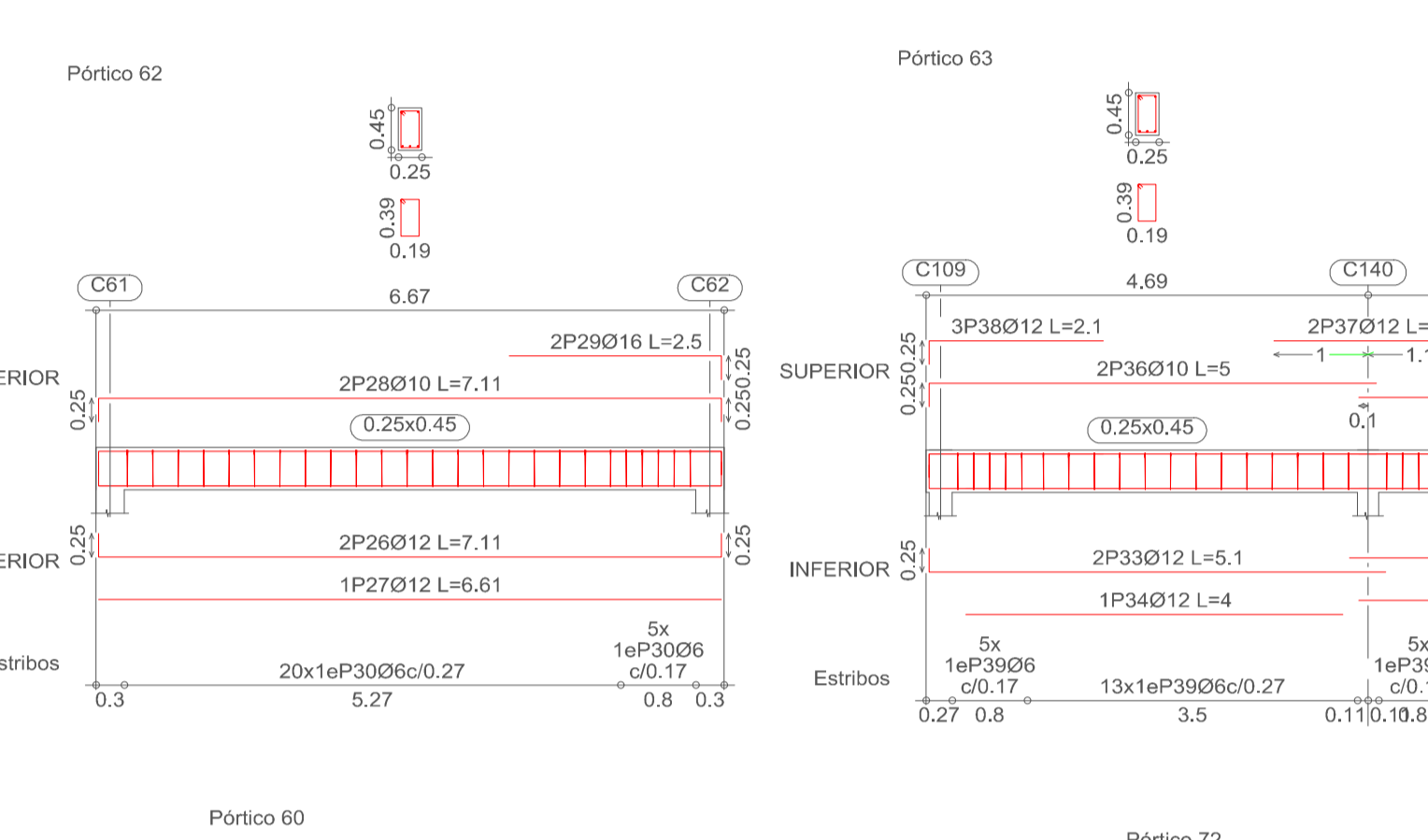
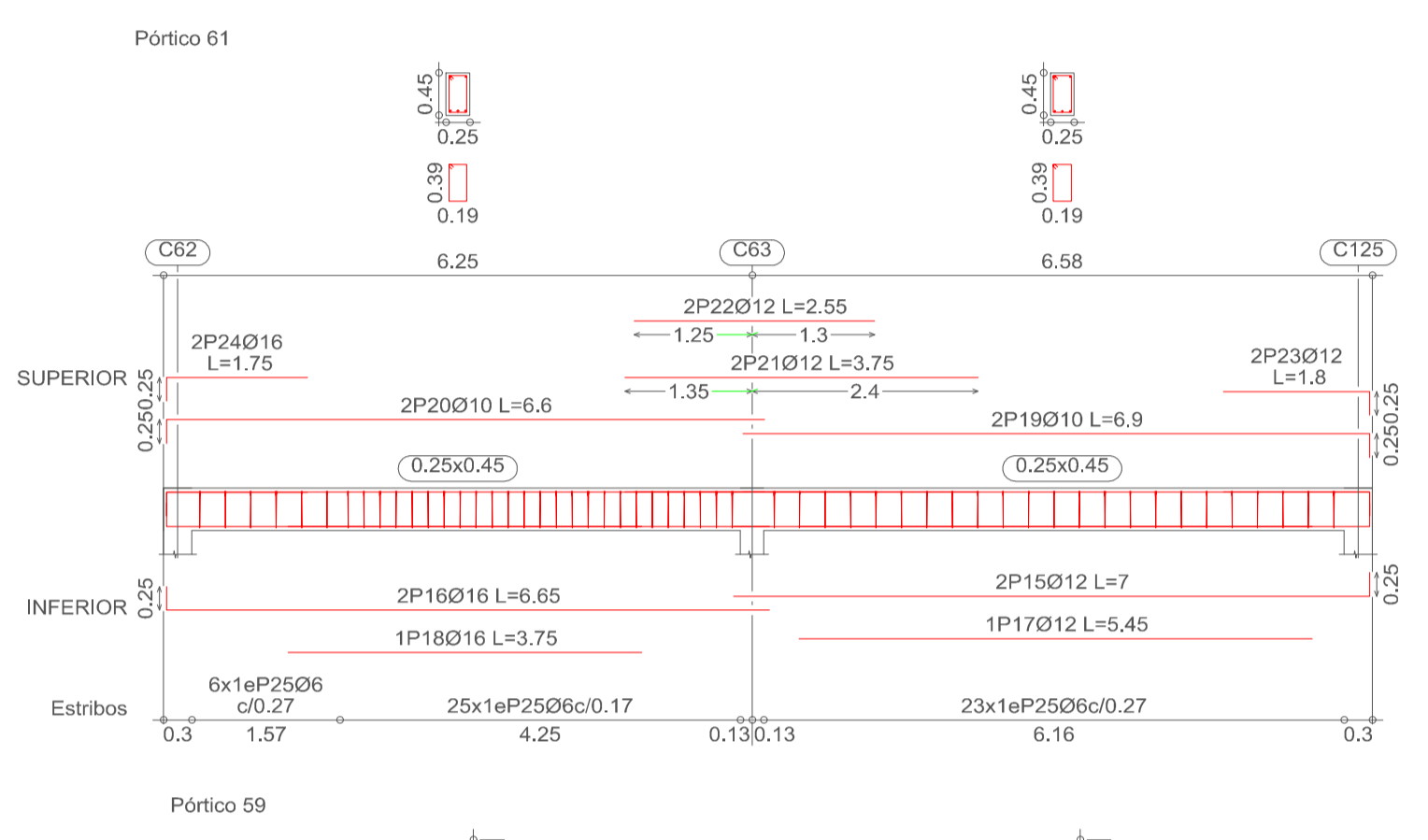
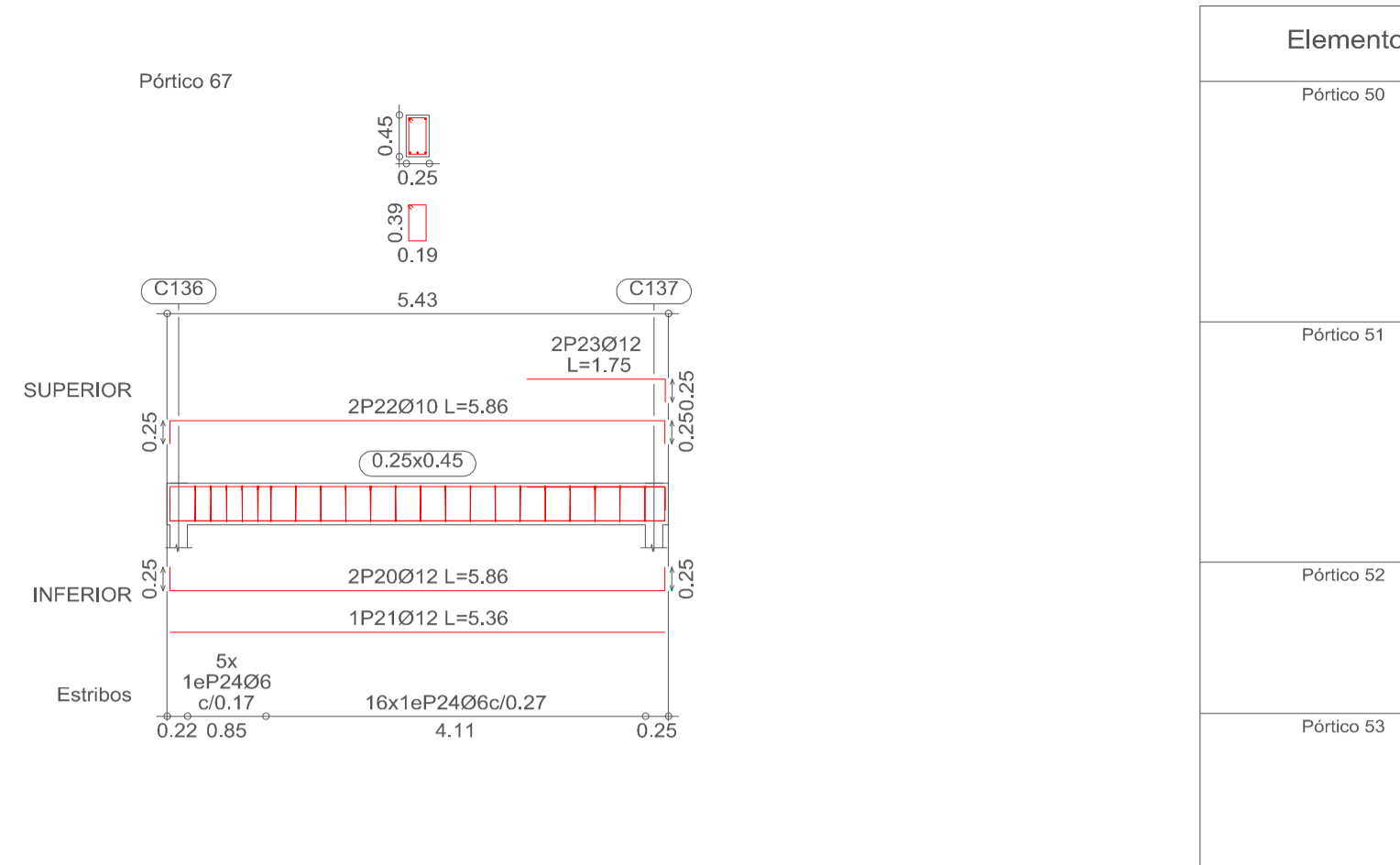
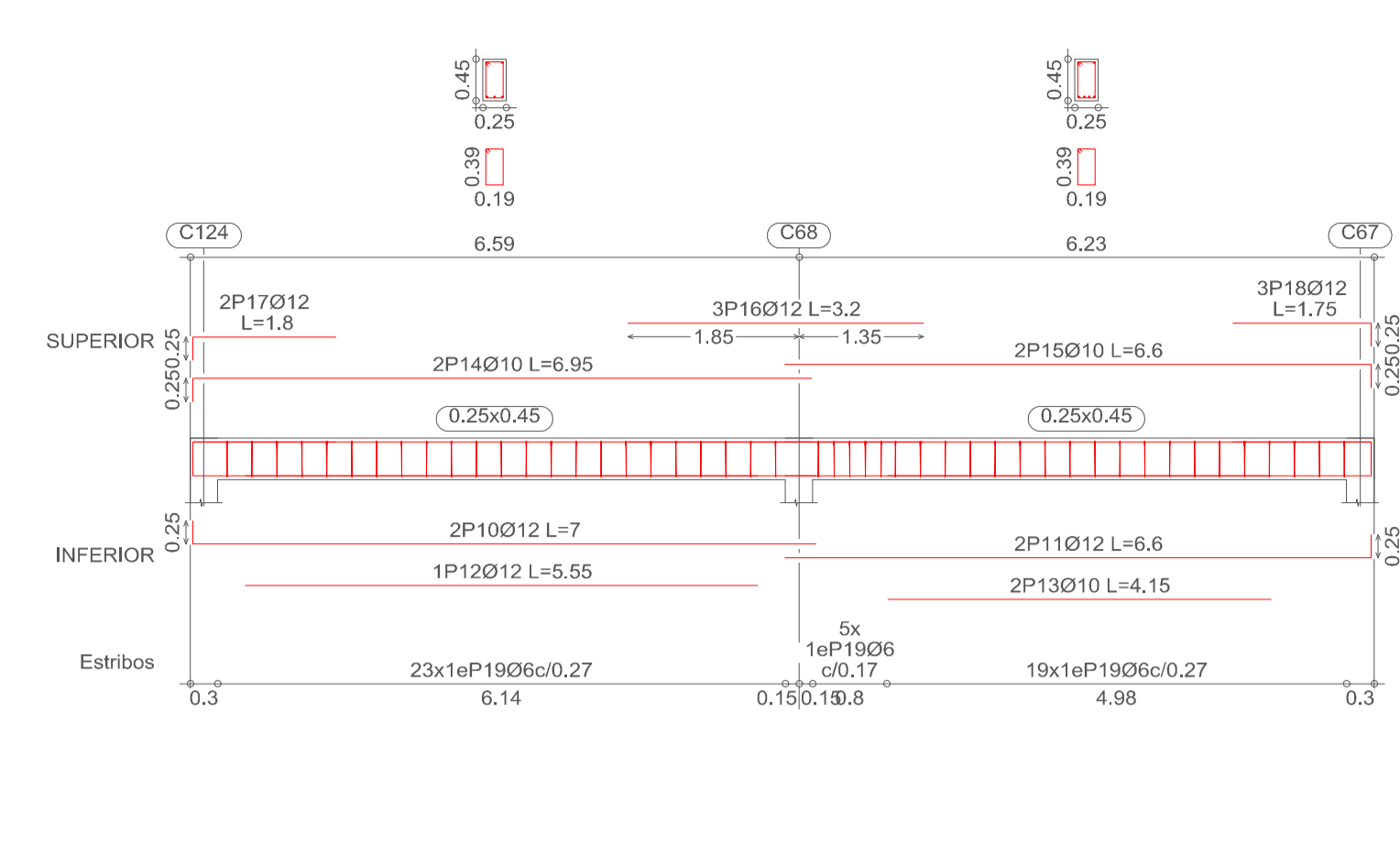
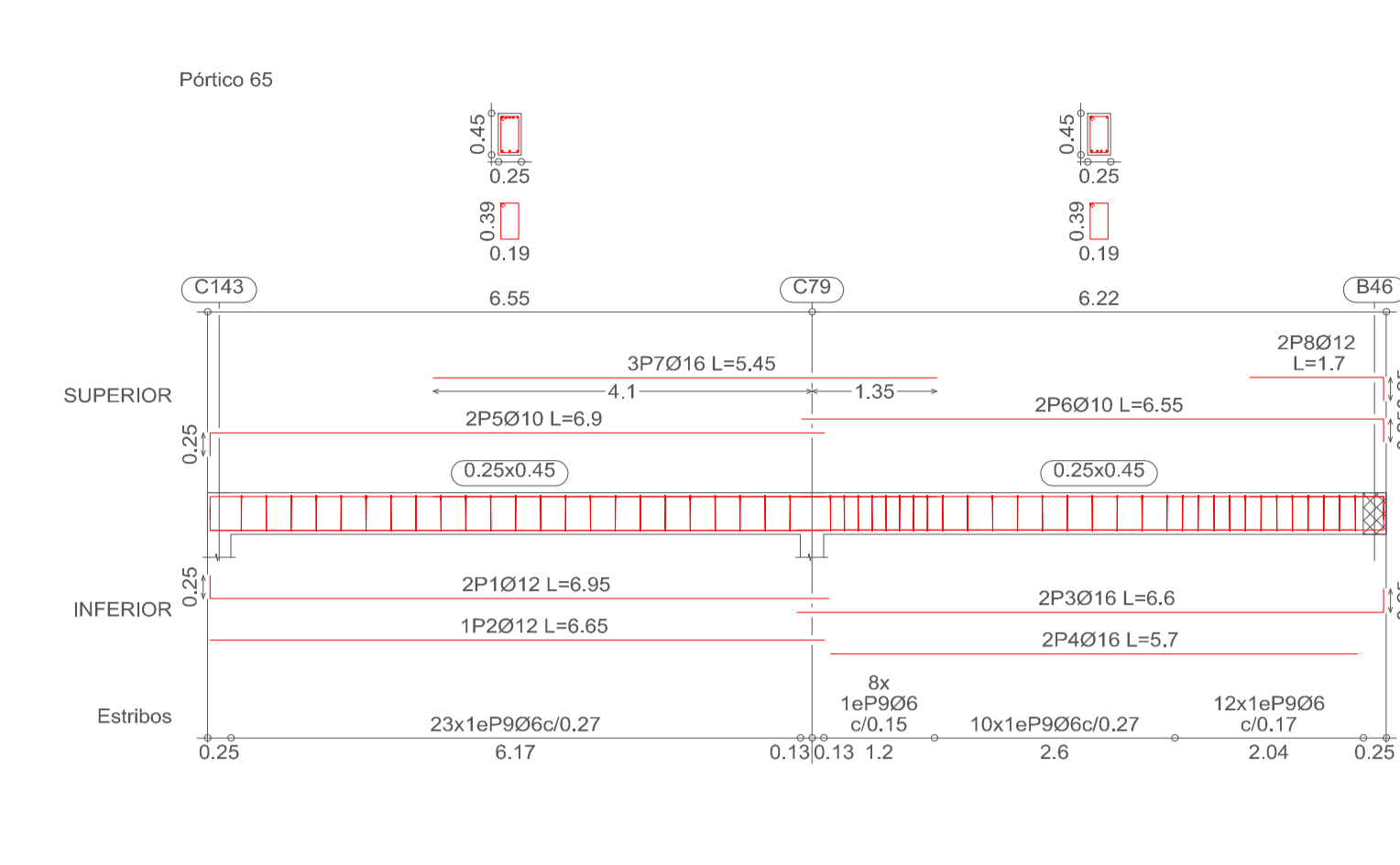


Elemento	Pos.	Diám.	No.	Long. (cm)	Total (cm)	AH-500CN (kg)	
Pórtico 8	1	Ø16	2	620	1240	19.6	
	2	Ø12	1	555	1110	9.9	
	3	Ø12	2	555	1110	9.9	
	4	Ø12	2	455	910	8.1	
	5	Ø12	2	445	890	7.9	
	6	Ø12	1	315	315	2.8	
	7	Ø10	2	610	1220	7.5	
	8	Ø10	2	540	1080	6.7	
	9	Ø10	2	550	1100	6.8	
	10	Ø16	2	280	560	4.8	
	11	Ø12	2	245	490	4.4	
	12	Ø16	2	220	440	6.9	
	13	Ø12	2	210	420	3.7	
	14	Ø12	2	165	330	2.9	
	15	Ø12	2	150	300	2.7	
	16	Ø6	63	128	8054	17.9	
Total+10%						139.2	
Pórtico 9	17	Ø12	2	567	1134	10.1	
	18	Ø12	1	445	890	4.1	
	19	Ø10	2	567	1134	7.0	
	20	Ø12	4	145	580	5.1	
	21	Ø6	20	128	2560	5.7	
	Total+10%						35.2
Pórtico 10	22	Ø12	2	520	1040	9.2	
	23	Ø12	2	505	1010	9.0	
	24	Ø10	2	415	830	5.1	
	25	Ø12	1	390	390	3.5	
	26	Ø10	2	515	1030	6.4	
	27	Ø10	2	500	1000	6.2	
	28	Ø16	2	250	500	7.9	
	29	Ø12	2	140	280	5.5	
	30	Ø12	2	135	270	2.4	
	31	Ø6	33	128	4224	9.4	
	Total+10%						67.8
Pórtico 11	32	Ø12	2	455	910	8.1	
	33	Ø12	4	470	1880	16.7	
	34	Ø12	2	440	880	7.8	
	35	Ø12	1	315	315	2.8	
	36	Ø10	2	445	890	5.5	
	37	Ø10	4	465	1860	11.5	
	38	Ø16	2	455	910	14.4	
	39	Ø16	2	290	580	9.2	
	40	Ø16	2	195	390	6.2	
	41	Ø12	2	190	380	3.4	
	42	Ø6	51	128	6528	14.5	
	Total+10%						110.1
	Ø6: 52.3						
	Ø10: 68.9						
Ø12: 150.8							
Ø16: 80.3							
Ø12: 161.6							
Ø16: 75.9							
Total: 352.3							

Elemento	Pos.	Diám.	No.	Long. (cm)	Total (cm)	AH-500CN (kg)	
Pórtico 1	1	Ø12	2	970	1940	17.2	
	2	Ø12	1	945	945	8.4	
	3	Ø12	2	500	1000	8.9	
	4	Ø12	1	495	495	4.4	
	5	Ø12	2	495	990	8.8	
	6	Ø12	1	465	465	4.1	
	7	Ø10	2	945	1890	11.7	
	8	Ø10	2	495	990	6.1	
	9	Ø10	2	490	980	6.0	
	10	Ø16	2	670	1340	21.1	
	11	Ø16	2	280	560	8.8	
	12	Ø12	2	135	270	2.4	
	13	Ø6	88	128	11008	24.4	
Total+10%						145.5	
Pórtico 2	14	Ø12	2	550	1100	9.8	
	15	Ø12	1	520	520	4.6	
	16	Ø12	2	520	1040	9.2	
	17	Ø12	1	335	335	3.0	
	18	Ø10	2	545	1090	6.7	
	19	Ø10	2	515	1030	6.4	
20	Ø12	2	270	540	4.8		
21	Ø12	2	150	300	2.7		
22	Ø12	2	140	280	2.5		
23	Ø6	37	128	4736	10.5		
Total+10%						66.2	
Pórtico 3	24	Ø12	2	520	1040	9.2	
	25	Ø12	1	470	470	3.6	
	26	Ø12	2	360	720	6.4	
	27	Ø10	2	280	560	3.2	
	28	Ø12	1	215	215	1.9	
	29	Ø10	2	520	1040	6.4	
	30	Ø10	2	355	710	4.4	
	31	Ø10	2	255	510	3.1	
	32	Ø12	2	315	630	5.3	
	33	Ø12	2	180	360	3.2	
	34	Ø12	2	140	280	2.5	
35	Ø6	40	128	5120	11.4		
Total+10%						67.0	
Pórtico 4	36	Ø16	2	710	1420	22.4	
	37	Ø16	2	530	1060	16.7	
	38	Ø12	1	470	470	4.2	
	39	Ø12	1	275	275	2.4	
	40	Ø12	2	710	1420	12.8	
	41	Ø10	2	530	1060	6.5	
	42	Ø12	3	255	765	7.1	
	43	Ø12	3	200	600	5.3	
	44	Ø12	3	175	525	4.7	
	45	Ø8	44	162	7128	28.1	
	Total+10%						116.8
	Ø6: 50.8						
	Ø8: 30.9						
	Ø10: 76.3						
Ø12: 161.6							
Ø16: 75.9							
Total: 395.5							

Elemento	Pos.	Diám.	No.	Long. (cm)	Total (cm)	AH-500CN (kg)	
Pórtico 5	1	Ø12	2	580	1160	10.3	
	2	Ø12	1	555	555	4.9	
	3	Ø12	2	550	1100	9.8	
	4	Ø12	1	525	525	4.7	
	5	Ø10	2	580	1160	7.2	
	6	Ø10	2	550	1100	6.8	
	7	Ø12	2	340	680	6.0	
	8	Ø12	2	230	460	4.1	
	9	Ø6	37	128	4736	10.5	
Total+10%						70.7	
Pórtico 6	10	Ø16	2	525	1050	16.6	
	11	Ø12	1	485	485	4.3	
	12	Ø16	2	500	1000	15.8	
	13	Ø12	1	255	255	2.3	
	14	Ø10	2	485	970	6.0	
	15	Ø10	2	460	920	5.7	
	16	Ø12	3	245	735	6.5	
	17	Ø12	3	165	495	4.4	
	18	Ø6	35	162	5670	22.4	
	Total+10%						92.4
	Pórtico 7	19	Ø12	2	675	1350	12.0
		20	Ø12	2	605	1210	10.7
		21	Ø12	2	585	1170	10.4
		22	Ø12	1	550	550	4.9
		23	Ø12	1	465	465	4.1
		24	Ø12	1	345	345	3.1
25		Ø10	2	665	1330	8.2	
26		Ø10	2	590	1180	7.3	
27		Ø10	2	580	1160	7.2	
28		Ø12	3	270	810	7.2	
29		Ø12	2	250	500	4.4	
30		Ø12	2	175	350	3.1	
31		Ø12	2	155	310	2.8	
32	Ø6	68	128	8704	19.3		
Total+10%						115.2	
Pórtico 15	33	Ø16	2	1200	2400	37.9	
	34	Ø12	1	910	910	28.7	
	35	Ø16	4	115	460	7.3	
	36	Ø10	4	650	2600	16.0	
	37	Ø16	4	310	1240	19.6	
	38	Ø16	4	290	1160	18.3	
	39	Ø8	50	162	8100	32.0	
	Total+10%						175.8
	Ø6: 32.8						
	Ø8: 59.8						
Ø10: 70.8							
Ø12: 132.1							
Ø16: 158.6							
Total: 454.1							





Elemento	Pos.	Diám.	No.	Long. (cm)	Total (cm)	AH-500CN (kg)	
Pórtico 50	1	Ø12	2	710	1420	12.6	
	2	Ø12	1	685	685	5.1	
	3	Ø16	2	665	1330	21.0	
	4	Ø12	2	370	740	6.6	
	5	Ø10	2	710	1420	8.8	
	6	Ø16	1	665	665	8.2	
	7	Ø16	2	420	840	13.3	
	8	Ø12	3	175	525	4.7	
	9	Ø6	66	138	8448	18.7	
Total+10%:						110.0	
Pórtico 51	10	Ø12	2	695	1390	12.3	
	11	Ø12	1	665	665	5.9	
	12	Ø12	2	690	1380	12.3	
	13	Ø12	2	660	1320	11.7	
	14	Ø10	2	690	1380	8.5	
	15	Ø10	2	685	1370	8.4	
	16	Ø12	3	465	1395	12.4	
	17	Ø12	2	175	350	3.1	
	18	Ø6	59	128	7552	16.8	
	Total+10%:						100.5
	Pórtico 52	19	Ø12	2	791	1582	14.0
		20	Ø12	1	590	590	5.2
21		Ø10	2	791	1582	9.8	
22		Ø12	4	195	780	6.9	
23		Ø6	26	128	3328	7.4	
Total+10%:						47.6	
Pórtico 53	24	Ø12	2	695	1390	12.3	
	25	Ø12	1	665	665	5.9	
	26	Ø16	2	675	1350	21.3	
	27	Ø16	1	375	375	5.9	
	28	Ø10	2	690	1380	8.5	
	29	Ø10	2	670	1340	8.3	
	30	Ø16	2	505	1010	15.9	
	31	Ø12	3	175	525	4.7	
32	Ø6	58	128	7424	16.5		
Total+10%:						109.2	
Pórtico 54	33	Ø12	2	695	1390	12.3	
	34	Ø12	1	670	670	11.9	
	35	Ø12	1	525	525	4.7	
	36	Ø12	1	440	440	3.9	
	37	Ø10	2	690	1380	8.5	
	38	Ø10	2	665	1330	8.2	
	39	Ø12	2	330	660	5.9	
	40	Ø12	2	180	360	3.2	
	41	Ø12	2	175	350	3.1	
	42	Ø6	58	128	7424	16.5	
Total+10%:						86.0	
Pórtico 55	43	Ø6	83	83	83	0.6	
	44	Ø10	85	85	85	0.6	
	45	Ø12	159	159	159	1.0	
	46	Ø16	85	85	85	0.6	
	47	Ø16	453	453	453	3.0	
	48	Ø12	10	10	10	0.0	
	49	Ø12	2	705	1410	12.5	
	50	Ø12	1	675	675	6.0	
	51	Ø16	2	665	1330	21.0	
	52	Ø16	4	545	2180	17.2	
53	Ø10	2	700	1400	8.6		
54	Ø10	2	655	1310	8.1		
55	Ø16	3	555	1665	26.3		
56	Ø10	2	170	340	3.0		
57	Ø6	55	128	7040	15.6		
Total+10%:						130.1	
Pórtico 60	10	Ø12	2	720	1440	12.8	
	11	Ø12	1	530	530	4.7	
	12	Ø10	2	720	1440	8.9	
	13	Ø12	4	180	720	6.4	
	14	Ø6	23	128	2944	6.5	
Total+10%:						43.2	
Pórtico 61	15	Ø12	2	700	1400	12.4	
	16	Ø16	2	665	1330	21.0	
	17	Ø12	1	545	545	4.8	
	18	Ø16	1	375	375	5.9	
	19	Ø10	2	690	1380	8.5	
	20	Ø10	2	660	1320	8.1	
	21	Ø12	2	375	750	6.7	
	22	Ø12	2	255	510	4.5	
	23	Ø12	2	180	360	3.2	
	24	Ø16	2	175	350	3.1	
	25	Ø6	54	128	6912	15.3	
	Total+10%:						105.5
	Pórtico 62	26	Ø12	2	711	1422	12.6
		27	Ø12	1	661	661	5.9
		28	Ø10	2	711	1422	8.8
29		Ø16	2	250	500	7.9	
30		Ø6	25	128	3200	7.1	
Total+10%:						46.5	
Pórtico 63	31	Ø12	2	550	1100	9.8	
	32	Ø10	2	515	1030	6.4	
	33	Ø12	2	510	1020	9.1	
	34	Ø12	1	400	400	3.6	
	35	Ø10	2	540	1080	6.7	
	36	Ø10	2	500	1000	6.2	
	37	Ø12	2	210	420	3.7	
	38	Ø12	3	210	630	5.6	
	39	Ø6	38	128	4864	10.8	
Total+10%:						68.1	
Pórtico 64	40	Ø6	60	60	60	0.7	
	41	Ø10	17	17	17	0.1	
	42	Ø12	140	140	140	1.0	
	43	Ø16	115	115	115	0.8	
	44	Ø6	28	28	28	0.2	
Total:						393.4	

Elemento	Pos.	Diám.	No.	Long. (cm)	Total (cm)	AH-500CN (kg)	
Pórtico 12	1	Ø12	2	455	910	8.1	
	2	Ø12	1	425	425	3.8	
	3	Ø12	2	435	870	7.7	
	4	Ø12	1	405	405	3.6	
	5	Ø12	2	395	790	7.0	
	6	Ø12	1	385	385	3.4	
	7	Ø10	2	815	1630	10.0	
	8	Ø10	2	430	860	5.3	
	9	Ø16	3	735	2205	34.8	
	10	Ø16	3	375	1125	17.8	
	11	Ø18	3	210	630	9.9	
	12	Ø6	52	128	6656	14.8	
Total+10%:						138.8	
Pórtico 13	13	Ø16	2	625	1250	26.0	
	14	Ø16	2	545	1090	17.0	
	15	Ø12	1	515	515	4.6	
	16	Ø12	1	340	340	3.0	
	17	Ø12	2	320	640	14.6	
	18	Ø10	2	540	1080	6.7	
	19	Ø12	3	305	915	8.1	
	20	Ø12	3	225	675	6.0	
	21	Ø12	3	160	480	4.3	
	22	Ø6	49	162	7938	31.3	
	Total+10%:						133.8
	Pórtico 14	23	Ø16	2	1200	2400	37.9
		24	Ø16	4	115	460	7.3
		25	Ø12	1	640	640	3.5
26		Ø10	4	655	2620	16.2	
27		Ø16	6	315	1890	29.8	
28		Ø6	50	162	8100	32.0	
Total+10%:						144.7	
Pórtico 19	29	Ø12	2	750	1500	13.3	
	30	Ø12	2	500	1000	9.0	
	31	Ø12	2	435	870	7.7	
	32	Ø12	1	405	405	3.6	
	33	Ø10	2	750	1500	9.2	
	34	Ø10	2	430	860	5.3	
	35	Ø12	3	475	1425	12.7	
	36	Ø12	3	195	585	5.0	
	37	Ø6	44	128	5632	12.5	
	Total+10%:						84.4
	Pórtico 45	1	Ø12	2	705	1410	12.5
		2	Ø12	1	685	685	6.1
		3	Ø12	2	505	1010	9.0
		4	Ø12	1	405	405	3.6
5		Ø10	2	700	1400	8.6	
6		Ø10	2	680	1360	8.4	
7		Ø16	7	295	2065	14.0	
8		Ø12	2	200	400	3.6	
9		Ø12	2	180	360	3.2	
10		Ø6	48	128	6144	13.8	
Total+10%:						97.6	
Pórtico 46	11	Ø12	2	690	1380	12.3	
	12	Ø12	1	665	665	5.9	
	13	Ø12	2	670	1340	11.9	
	14	Ø12	1	360	360	3.2	
	15	Ø10	2	690	1380	8.5	
	16	Ø10	2	665	1330	8.2	
	17	Ø12	2				

Pilares que terminan en SOBRECIMIENTO1
Hormigón: H-25 , Control Normal
Acero: AH-500 , Control Normal
Escala: 1:75

C12

Pos.	Diám.	No.	Long. (cm)	Total (cm)	x 6 (cm)
7	Ø12	4	185	740	740
8	Ø12	4	83	332	332
9	Ø6	11	98	1078	1078

C52=C54=C55=C56
C57

Pos.	Diám.	No.	Long. (cm)	Total (cm)	x 5 (cm)
1	Ø12	4	185	740	3700
2	Ø12	4	83	332	1660
3	Ø6	11	98	1078	5390

C22=C63

Pos.	Diám.	No.	Long. (cm)	Total (cm)	x 2 (cm)
13	Ø12	4	185	740	1480
14	Ø12	4	83	332	664
15	Ø6	11	98	1078	2156

C31

Pos.	Diám.	No.	Long. (cm)	Total (cm)	x 2 (cm)
22	Ø12	4	185	740	740
23	Ø12	4	83	332	332
24	Ø6	11	98	1078	1078

C59=C60

Pos.	Diám.	No.	Long. (cm)	Total (cm)	x 2 (cm)
4	Ø12	4	185	740	1480
5	Ø12	4	83	332	664
6	Ø6	11	98	1078	2156

C155

Pos.	Diám.	No.	Long. (cm)	Total (cm)	x 2 (cm)
31	Ø12	8	148	1184	1184
32	Ø12	8	83	664	664
33	Ø6	11	148	1628	1628
34	Ø6	22	49	1078	1078

C123

Pos.	Diám.	No.	Long. (cm)	Total (cm)	x 6 (cm)
10	Ø12	4	185	740	740
11	Ø12	4	83	332	332
12	Ø6	11	98	1078	1078

C9=C89=C100=C102
C138=C139

Pos.	Diám.	No.	Long. (cm)	Total (cm)	x 6 (cm)
4	Ø12	4	148	592	3552
5	Ø12	4	83	332	1992
6	Ø6	11	88	968	5808

C18=C23

Pos.	Diám.	No.	Long. (cm)	Total (cm)	x 2 (cm)
10	Ø12	4	185	740	1480
11	Ø12	4	83	332	664
12	Ø6	11	98	1078	2156

C25=C26=C27=C28
C69=C72=C79=C118
C119=C129=C143=C160

Pos.	Diám.	No.	Long. (cm)	Total (cm)	x 12 (cm)
16	Ø12	4	185	740	8880
17	Ø12	4	83	332	3984
18	Ø6	11	98	1078	12936

C32=C34=C75=C76
C77

Pos.	Diám.	No.	Long. (cm)	Total (cm)	x 5 (cm)
25	Ø12	4	185	740	3700
26	Ø12	4	83	332	1660
27	Ø6	11	98	1078	5390

C45=C46=C47=C48
C87=C122

Pos.	Diám.	No.	Long. (cm)	Total (cm)	x 6 (cm)
31	Ø12	4	185	740	4440
32	Ø12	4	83	332	1992
33	Ø6	11	98	1078	6468

C105=C130=C131
C134=C135=C162
C166

Pos.	Diám.	No.	Long. (cm)	Total (cm)	x 7 (cm)
1	Ø12	4	185	740	5180
2	Ø12	4	83	332	2324
3	Ø6	11	98	1078	7546

C142

Pos.	Diám.	No.	Long. (cm)	Total (cm)	x 2 (cm)
18	Ø12	4	148	592	592
19	Ø12	4	83	332	332
20	Ø6	11	88	968	968

C123

Pos.	Diám.	No.	Long. (cm)	Total (cm)	x 6 (cm)
10	Ø12	4	185	740	740
11	Ø12	4	83	332	332
12	Ø6	11	98	1078	1078

C29=C30=C33=C35
C36=C37=C38=C39
C43=C80=C81=C82
C83=C84=C128

Pos.	Diám.	No.	Long. (cm)	Total (cm)	x 15 (cm)
19	Ø12	4	185	740	11100
20	Ø12	4	83	332	4980
21	Ø6	11	98	1078	16170

C40=C41=C42=C44
C127

Pos.	Diám.	No.	Long. (cm)	Total (cm)	x 5 (cm)
28	Ø12	4	185	740	3700
29	Ø12	4	83	332	1660
30	Ø6	11	98	1078	5390

C49=C50=C53=C126

Pos.	Diám.	No.	Long. (cm)	Total (cm)	x 4 (cm)
34	Ø12	4	185	740	2960
35	Ø12	4	83	332	1328
36	Ø6	11	98	1078	4312

C51=C91=C92=C93
C94=C121

Pos.	Diám.	No.	Long. (cm)	Total (cm)	x 8 (cm)
37	Ø12	4	185	740	4440
38	Ø12	4	83	332	1992
39	Ø6	11	98	1078	6468

C103

Pos.	Diám.	No.	Long. (cm)	Total (cm)	x 2 (cm)
40	Ø12	4	185	740	740
41	Ø12	4	83	332	332
42	Ø6	11	98	1078	1078

C147

Pos.	Diám.	No.	Long. (cm)	Total (cm)	x 2 (cm)
24	Ø12	8	148	1184	1184
25	Ø12	8	83	664	664
26	Ø6	11	148	1628	1628
27	Ø6	22	49	1078	1078

C108

Pos.	Diám.	No.	Long. (cm)	Total (cm)	x 2 (cm)
4	Ø12	4	148	592	592
5	Ø12	4	83	332	332
6	Ø6	11	88	968	968

C145

Pos.	Diám.	No.	Long. (cm)	Total (cm)	x 2 (cm)
21	Ø16	10	195	1950	1950
22	Ø16	10	93	930	930
23	Ø6	9	211	1899	1899

C73=C74

Pos.	Diám.	No.	Long. (cm)	Total (cm)	x 2 (cm)
19	Ø12	4	185	740	1480
20	Ø12	4	83	332	664
21	Ø6	11	98	1078	2156

C85=C86

Pos.	Diám.	No.	Long. (cm)	Total (cm)	x 2 (cm)
25	Ø12	4	185	740	1480
26	Ø12	4	83	332	664
27	Ø6	11	98	1078	2156

C96=C163

Pos.	Diám.	No.	Long. (cm)	Total (cm)	x 2 (cm)
31	Ø12	6	148	888	1776
32	Ø12	6	83	498	996
33	Ø6	11	117	1287	2574

C99=C107=C110=C111
C112=C116=C164=C165
C170

Pos.	Diám.	No.	Long. (cm)	Total (cm)	x 9 (cm)
37	Ø16	10	195	1950	17550
29	Ø12	10	93	930	8370
39	Ø6	9	211	1899	17091

C101

Pos.	Diám.	No.	Long. (cm)	Total (cm)	x 4 (cm)
40	Ø12	4	148	592	592
41	Ø12	4	83	332	332
42	Ø6	11	88	968	968

C117

Pos.	Diám.	No.	Long. (cm)	Total (cm)	x 2 (cm)
7	Ø12	4	148	592	592
8	Ø12	4	83	332	332
9	Ø6	11	88	968	968

C6=C58=C144

Pos.	Diám.	No.	Long. (cm)	Total (cm)	x 3 (cm)
1	Ø12	4	185	740	2220
2	Ø12	4	83	332	996
3	Ø6	11	98	1078	3234

C150

Pos.	Diám.	No.	Long. (cm)	Total (cm)	x 2 (cm)
28	Ø12	4	148	592	592
29	Ø12	4	83	332	332
30	Ø6	11	88	968	968

C61=C62=C125

Pos.	Diám.	No.	Long. (cm)	Total (cm)	x 3 (cm)
7	Ø12	4	185	740	2220
8	Ø12	4	83	332	996
9	Ø6	11	98	1078	3234

C65=C67=C68=C124
C169=C171=C172
C173=C175

Pos.	Diám.	No.	Long. (cm)	Total (cm)	x 9 (cm)
13	Ø12	4	185	740	6660
14	Ø12	4	83	332	2988
15	Ø6	11	98	1078	9702

C78

Pos.	Diám.	No.	Long. (cm)	Total (cm)	x 4 (cm)
22	Ø12	4	185	740	6660
23	Ø12	4	83	332	2988
24	Ø6	11	98	1078	4284

C88=C90=C95

Pos.	Diám.	No.	Long. (cm)	Total (cm)	x 3 (cm)
28	Ø12	4	185	740	2220
29	Ø12	4	83	332	996
30	Ø6	11	98	1078	3234

C97=C98=C114=C115

Pos.	Diám.	No.	Long. (cm)	Total (cm)	x 4 (cm)
34	Ø16	12	195	2340	9360
35	Ø16	12	93	1116	4464
36	Ø6	9	211	1899	7596

C70=C71

Pos.	Diám.	No.	Long. (cm)	Total (cm)	x 2 (cm)
16	Ø12	4	185	740	1480
17	Ø12	4	83	332	664
18	Ø6	11	98	1078	2156