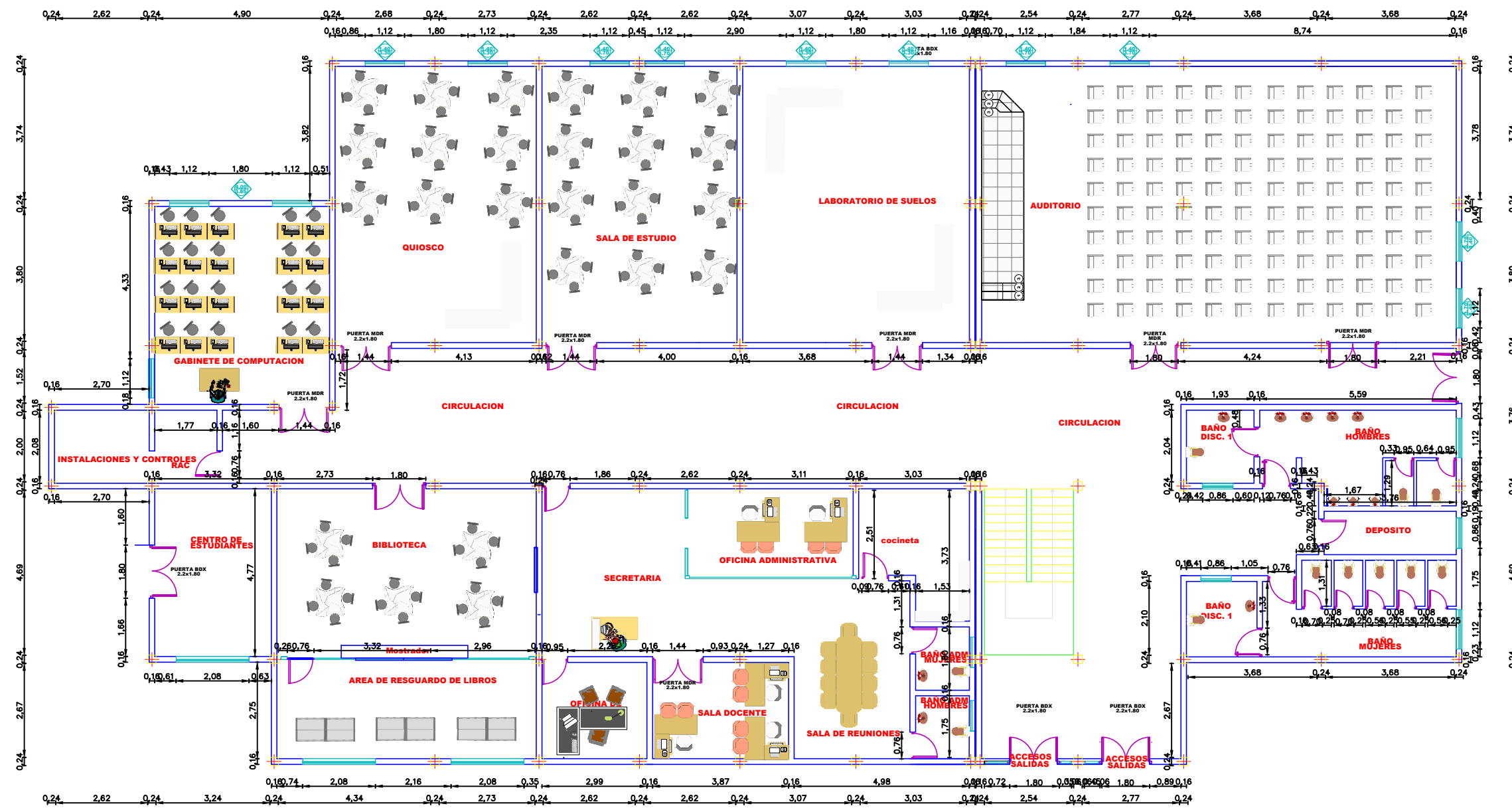
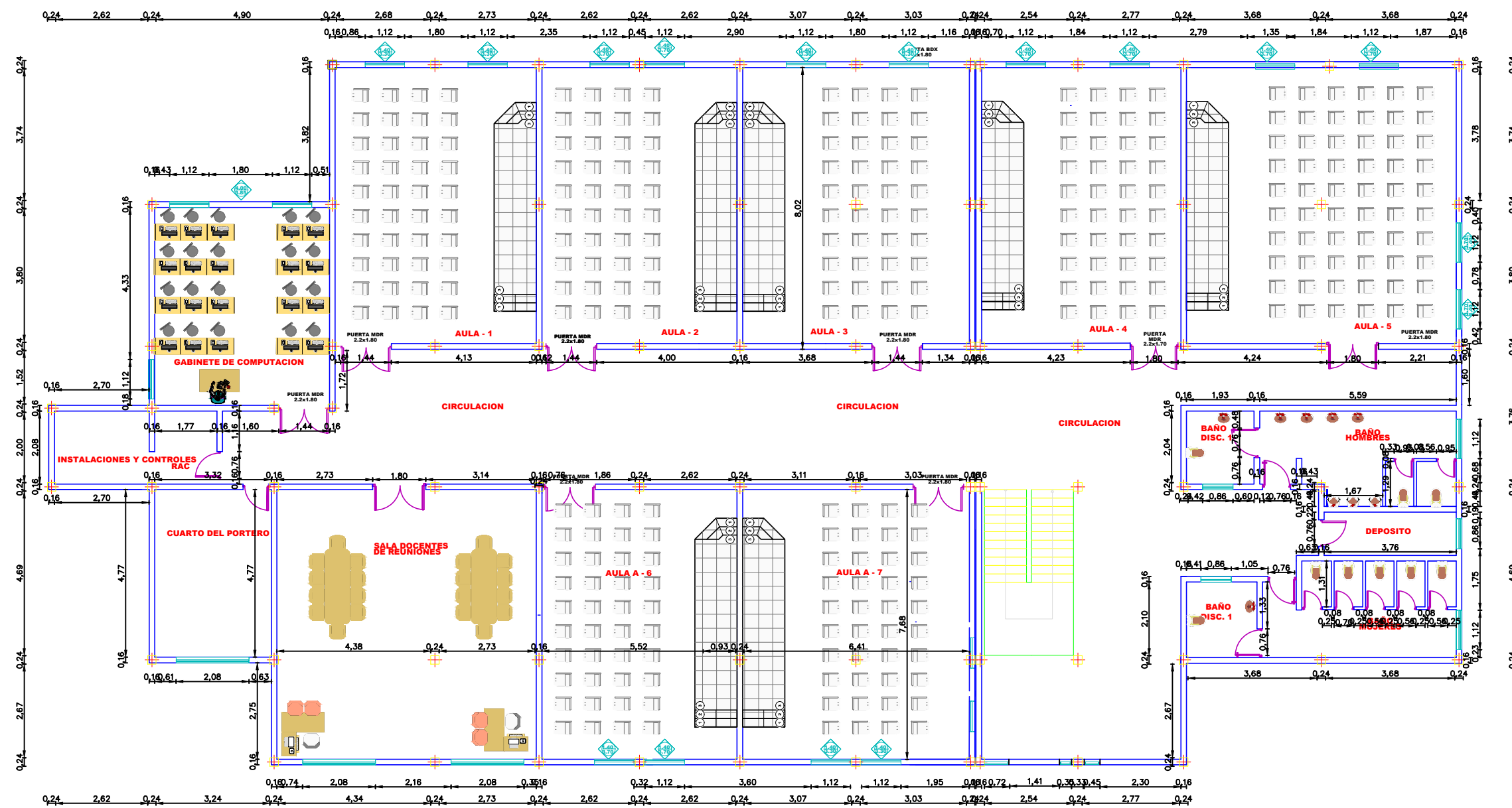


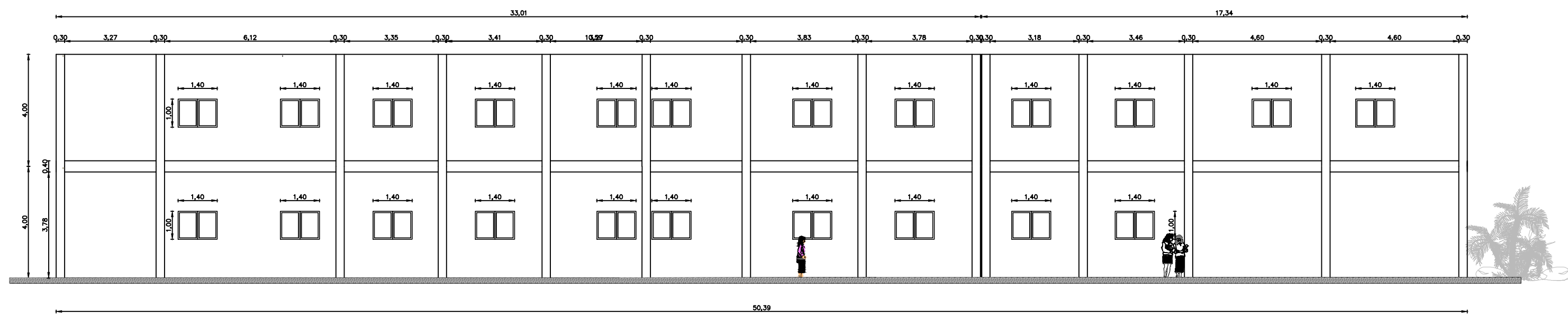
AMOBLAO PLANTA BAJA



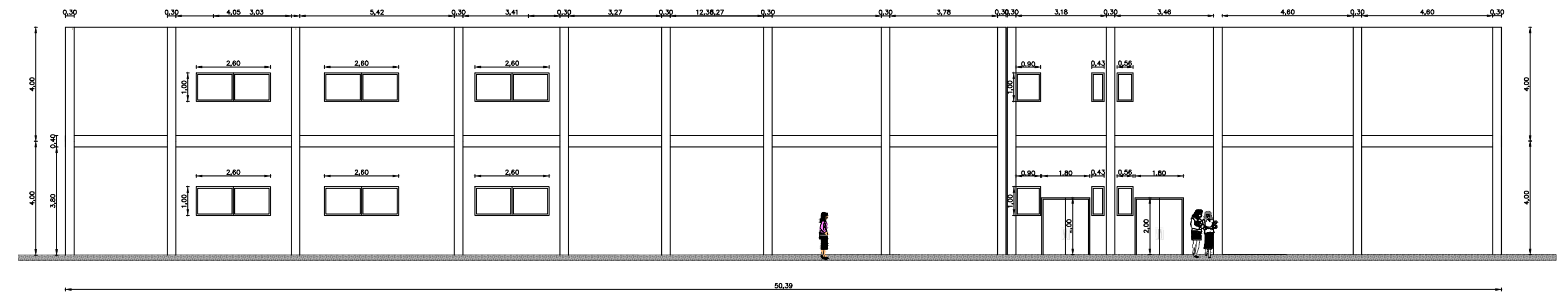
AMOBLAO PLANTA ALTA



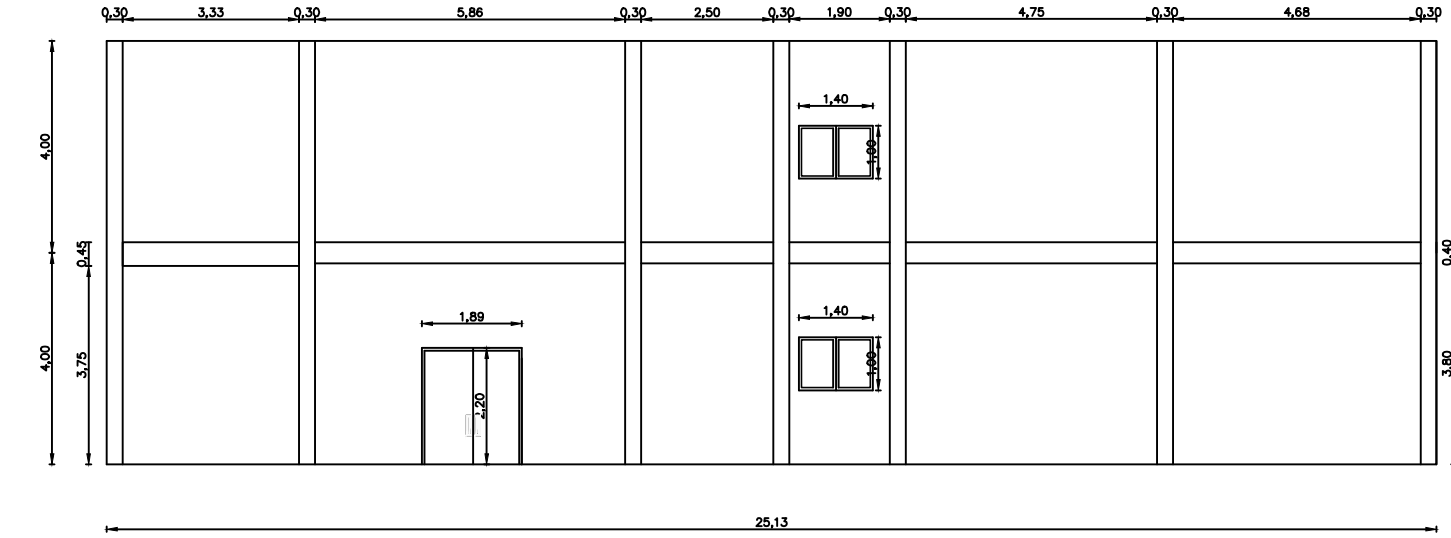
VISTA LATERAL IZQUIERDA



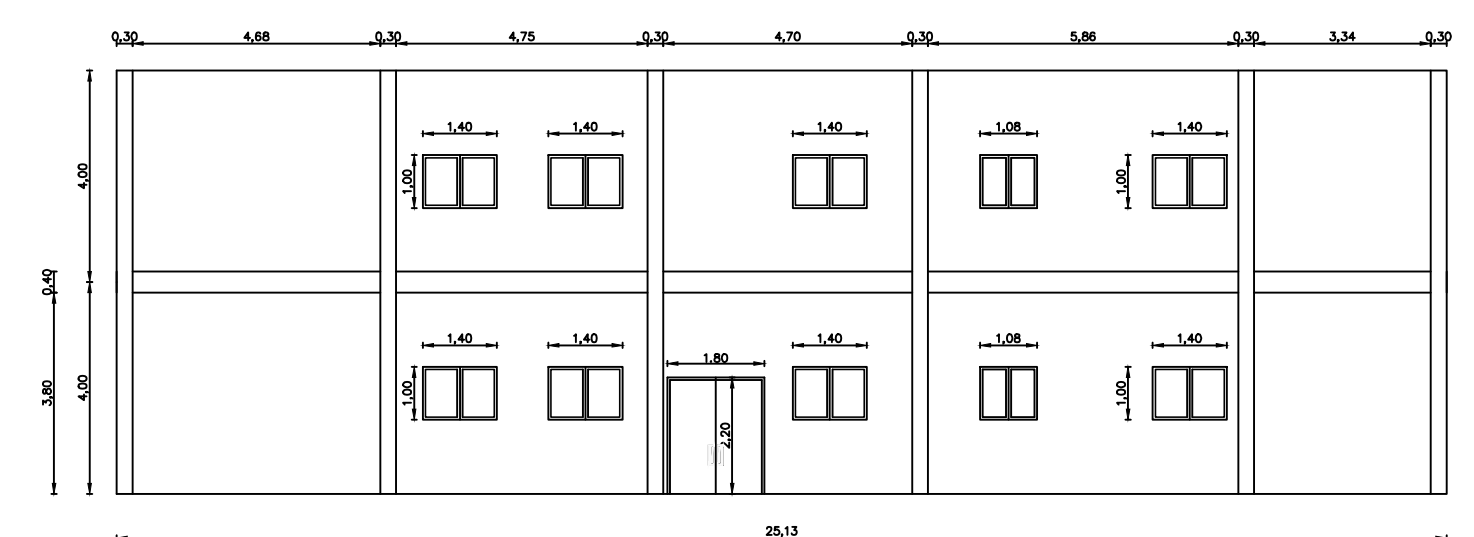
VISTA LATERAL DERECHA



VISTA FRONTAL IZQUIERDA



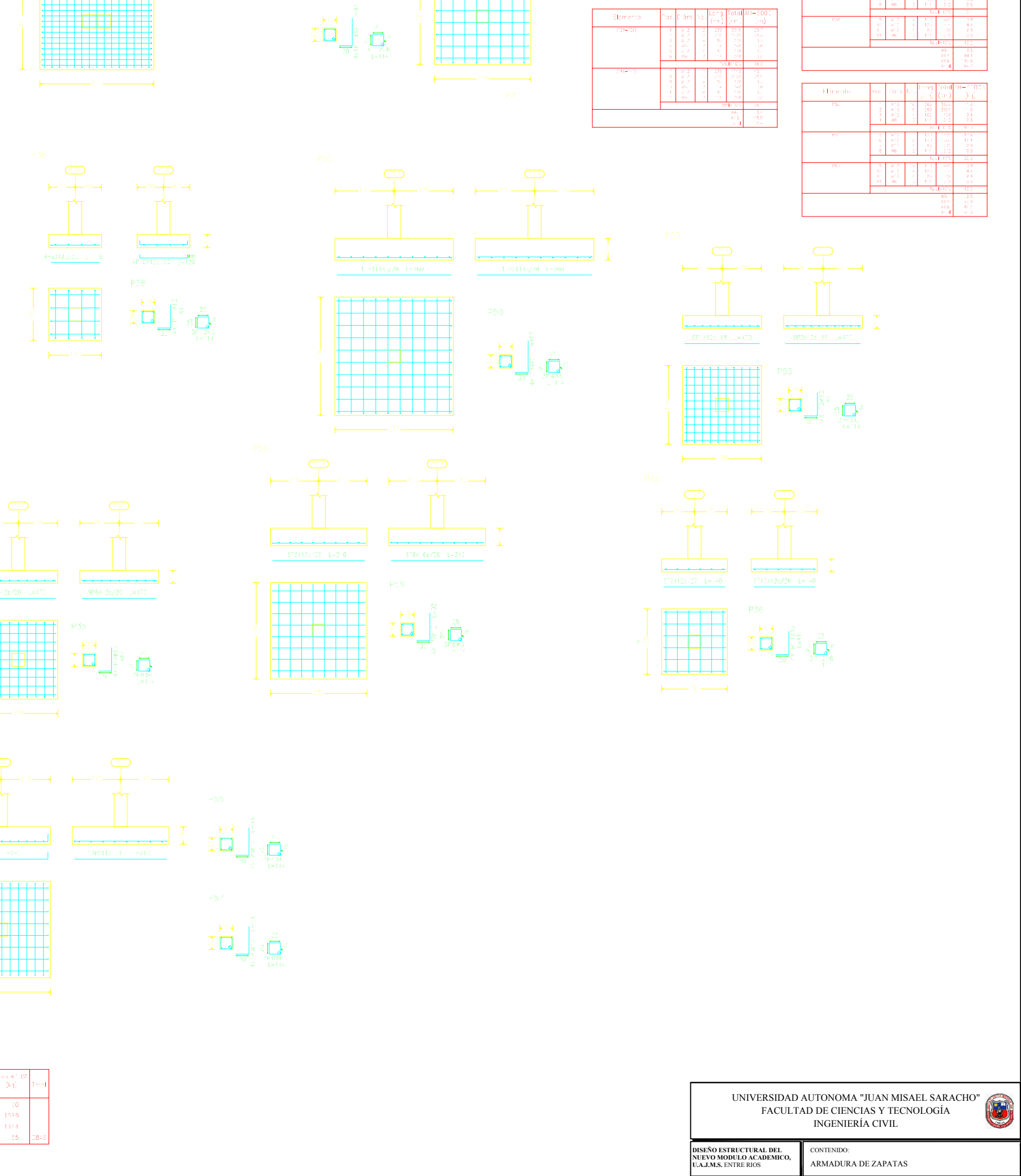
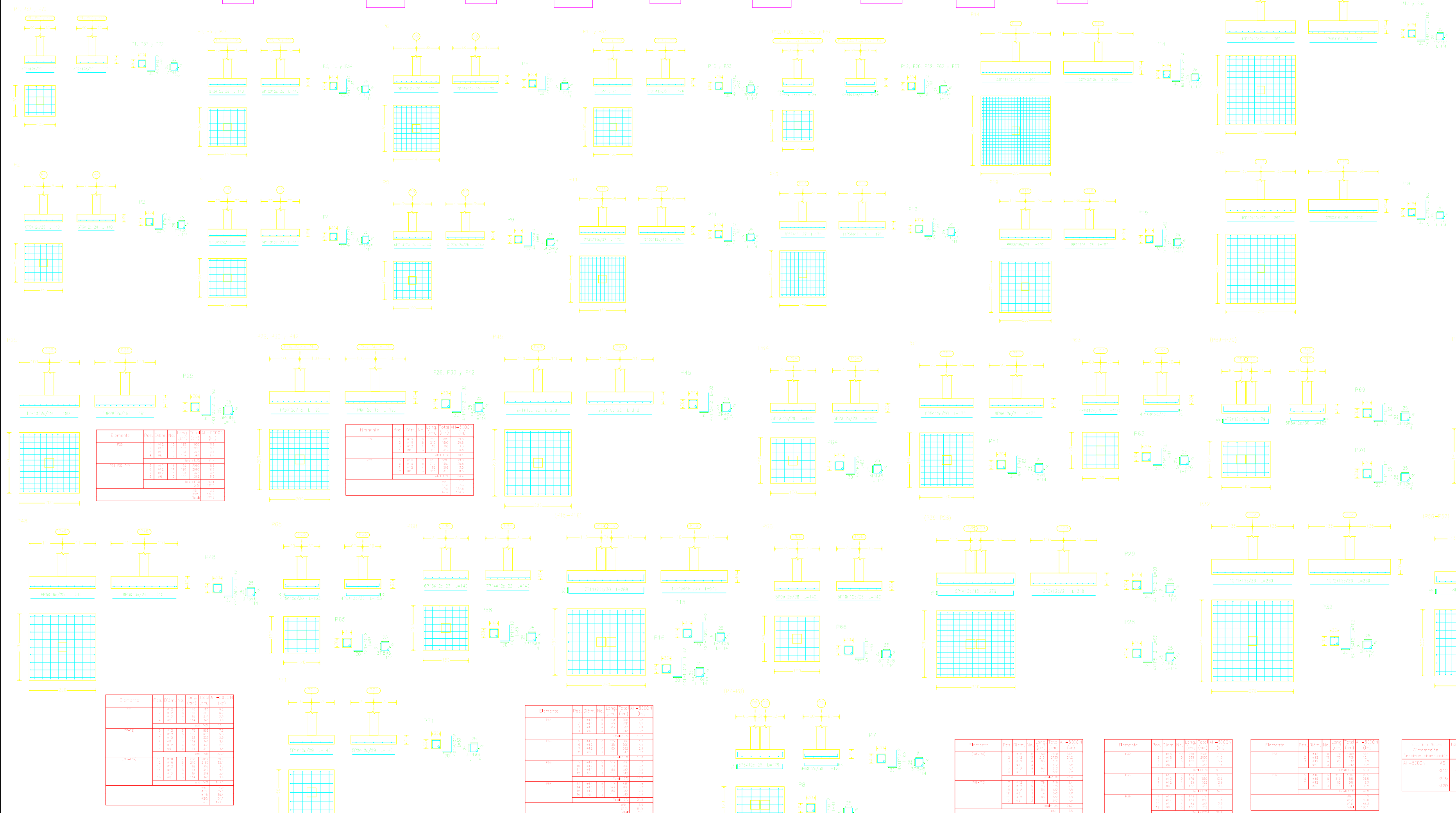
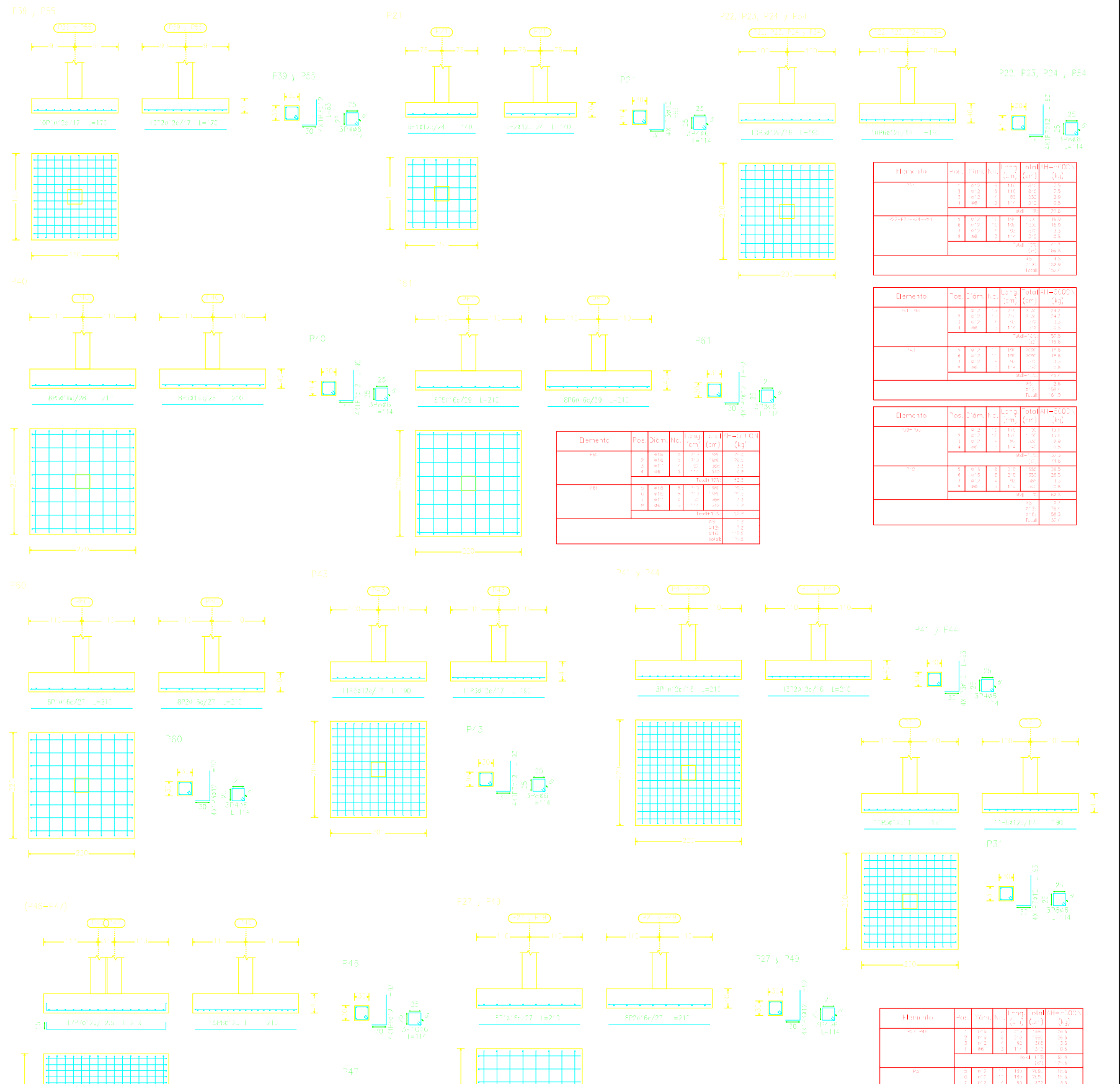
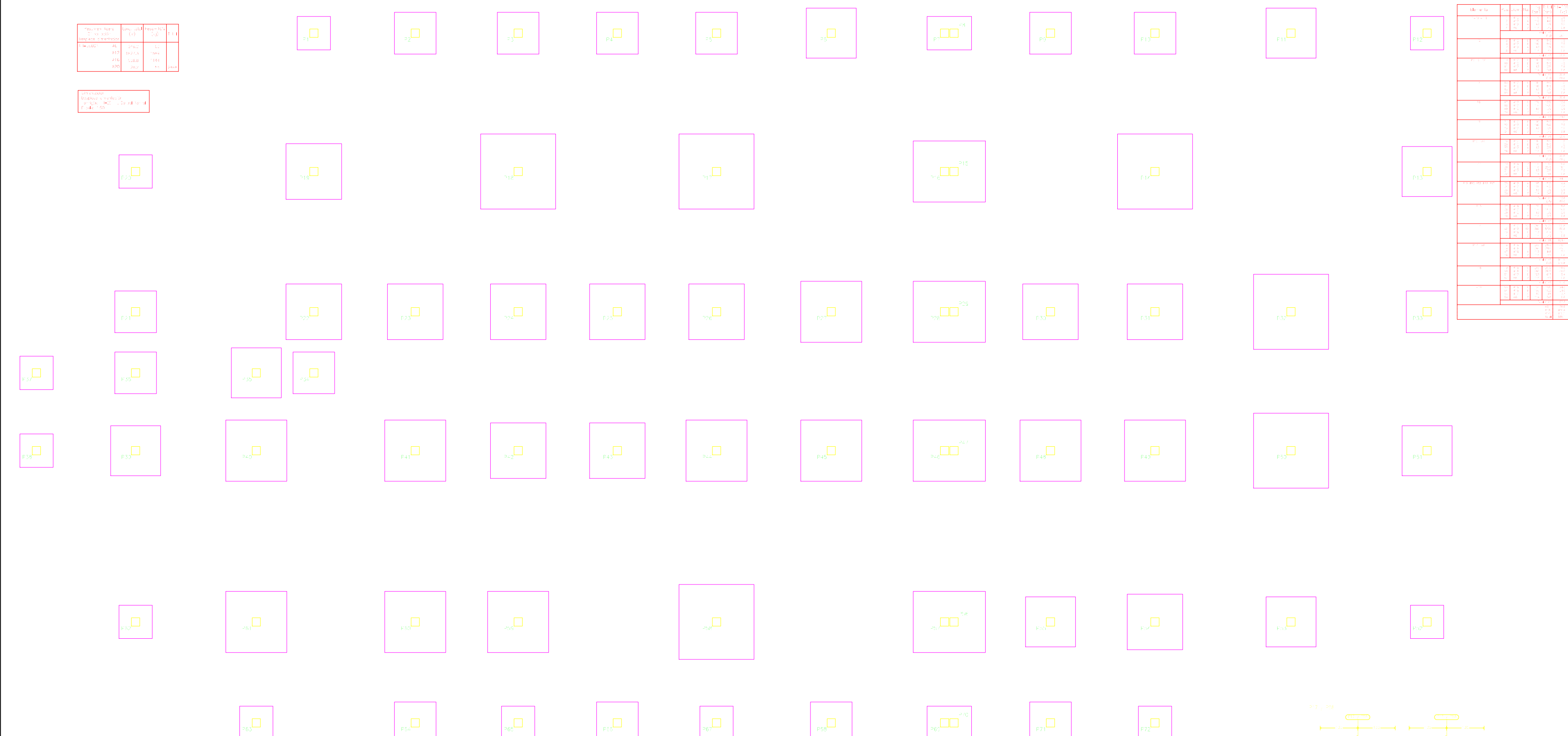
VISTA FRONTAL DERECHA

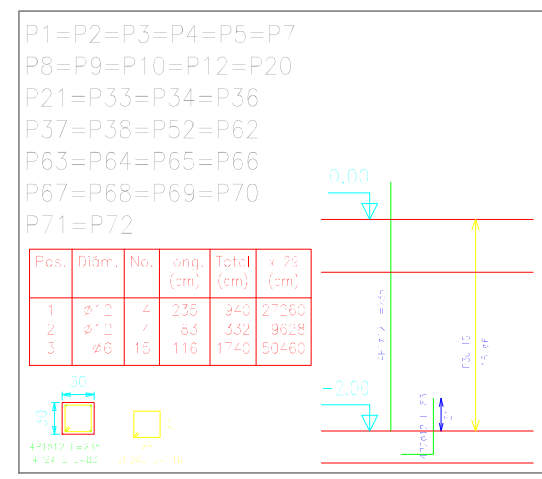


Diámetro (mm)	Longitud (mm)	Superficie (cm ²)	Vol. (cm ³)	Peso (kg)
10	100	0.785	0.785	0.00785
12	100	1.131	1.131	0.01131
14	100	1.539	1.539	0.01539
16	100	2.011	2.011	0.02011
18	100	2.542	2.542	0.02542
20	100	3.142	3.142	0.03142
22	100	3.801	3.801	0.03801
24	100	4.522	4.522	0.04522
26	100	5.307	5.307	0.05307
28	100	6.158	6.158	0.06158
30	100	7.069	7.069	0.07069
32	100	8.042	8.042	0.08042
34	100	9.078	9.078	0.09078
36	100	10.178	10.178	0.10178
38	100	11.342	11.342	0.11342
40	100	12.570	12.570	0.12570
42	100	13.863	13.863	0.13863
44	100	15.222	15.222	0.15222
46	100	16.647	16.647	0.16647
48	100	18.139	18.139	0.18139
50	100	19.698	19.698	0.19698
52	100	21.325	21.325	0.21325
54	100	23.020	23.020	0.23020
56	100	24.784	24.784	0.24784
58	100	26.617	26.617	0.26617
60	100	28.520	28.520	0.28520
62	100	30.493	30.493	0.30493
64	100	32.537	32.537	0.32537
66	100	34.652	34.652	0.34652
68	100	36.839	36.839	0.36839
70	100	39.098	39.098	0.39098
72	100	41.430	41.430	0.41430
74	100	43.835	43.835	0.43835
76	100	46.314	46.314	0.46314
78	100	48.868	48.868	0.48868
80	100	51.507	51.507	0.51507
82	100	54.232	54.232	0.54232
84	100	57.043	57.043	0.57043
86	100	59.941	59.941	0.59941
88	100	62.926	62.926	0.62926
90	100	66.000	66.000	0.66000
92	100	69.163	69.163	0.69163
94	100	72.416	72.416	0.72416
96	100	75.760	75.760	0.75760
98	100	79.195	79.195	0.79195
100	100	82.722	82.722	0.82722

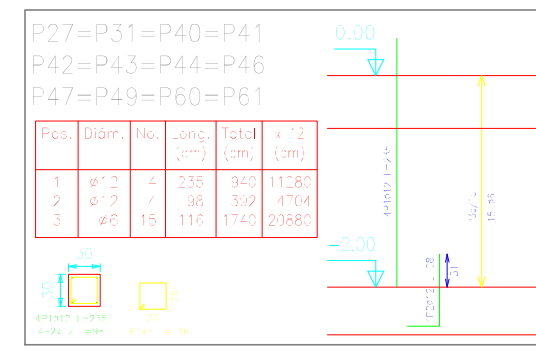
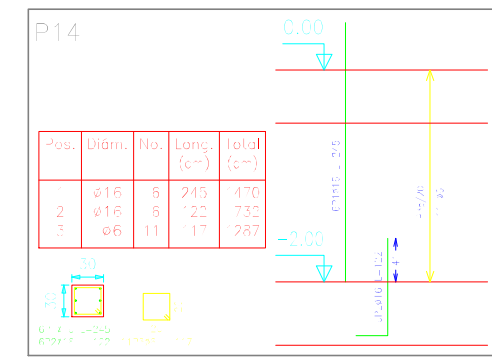
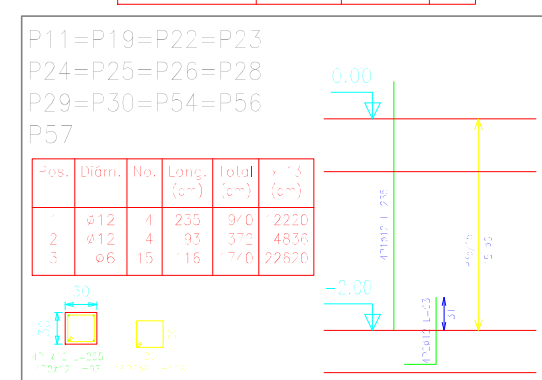
Material: Acero A36

Barra	Diámetro (mm)	Longitud (mm)	Superficie (cm ²)	Vol. (cm ³)	Peso (kg)
1	10	100	0.785	0.785	0.00785
2	12	100	1.131	1.131	0.01131
3	14	100	1.539	1.539	0.01539
4	16	100	2.011	2.011	0.02011
5	18	100	2.542	2.542	0.02542
6	20	100	3.142	3.142	0.03142
7	22	100	3.801	3.801	0.03801
8	24	100	4.522	4.522	0.04522
9	26	100	5.307	5.307	0.05307
10	28	100	6.158	6.158	0.06158
11	30	100	7.069	7.069	0.07069
12	32	100	8.042	8.042	0.08042
13	34	100	9.078	9.078	0.09078
14	36	100	10.178	10.178	0.10178
15	38	100	11.342	11.342	0.11342
16	40	100	12.570	12.570	0.12570
17	42	100	13.863	13.863	0.13863
18	44	100	15.222	15.222	0.15222
19	46	100	16.647	16.647	0.16647
20	48	100	18.139	18.139	0.18139
21	50	100	19.698	19.698	0.19698
22	52	100	21.325	21.325	0.21325
23	54	100	23.020	23.020	0.23020
24	56	100	24.784	24.784	0.24784
25	58	100	26.617	26.617	0.26617
26	60	100	28.520	28.520	0.28520
27	62	100	30.493	30.493	0.30493
28	64	100	32.537	32.537	0.32537
29	66	100	34.652	34.652	0.34652
30	68	100	36.839	36.839	0.36839
31	70	100	39.098	39.098	0.39098
32	72	100	41.430	41.430	0.41430
33	74	100	43.835	43.835	0.43835
34	76	100	46.314	46.314	0.46314
35	78	100	48.868	48.868	0.48868
36	80	100	51.507	51.507	0.51507
37	82	100	54.232	54.232	0.54232
38	84	100	57.043	57.043	0.57043
39	86	100	59.941	59.941	0.59941
40	88	100	62.926	62.926	0.62926
41	90	100	66.000	66.000	0.66000
42	92	100	69.163	69.163	0.69163
43	94	100	72.416	72.416	0.72416
44	96	100	75.760	75.760	0.75760
45	98	100	79.195	79.195	0.79195
46	100	100	82.722	82.722	0.82722



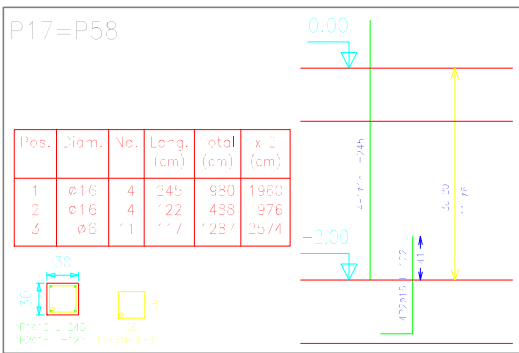
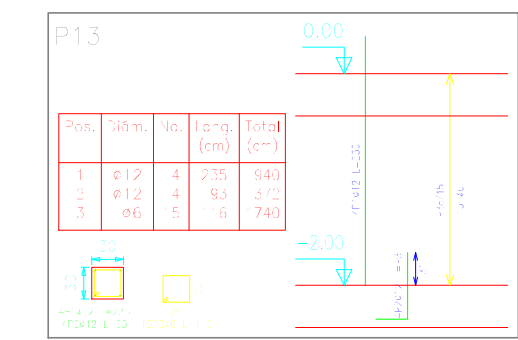
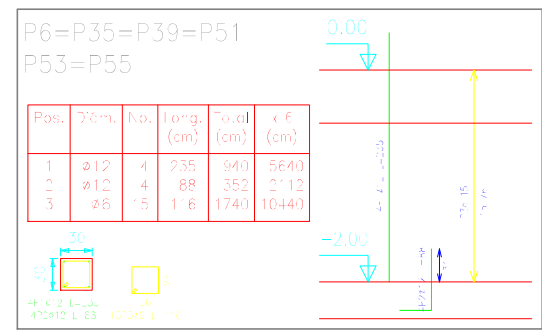


Resumen Acero Armadura Pilares	Long. total (m)	Peso (kg)	Total
Ø12=5000	47	228.2	228.2
Ø8	15	11.5	239.7

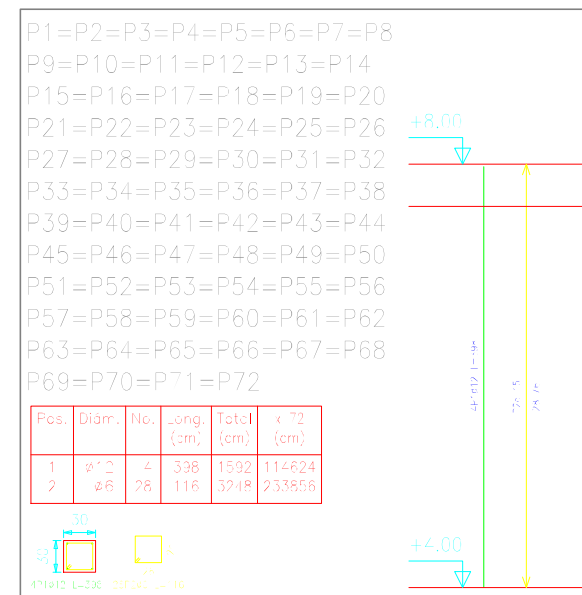
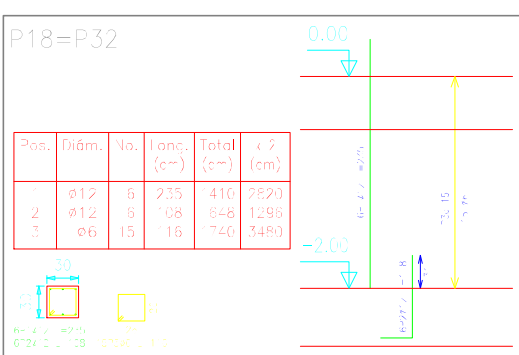
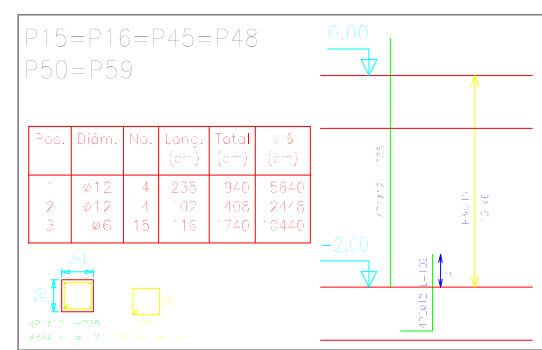


Pilares que terminan en Planta baja
Hormigón: H-25 , Control Normal
Acero: AH-500 , Control Normal
Escala: 1:50

Pilares que terminan en Planta baja
Hormigón: H-25 , Control Normal
Acero: AH-500 , Control Normal
Escala: 1:50

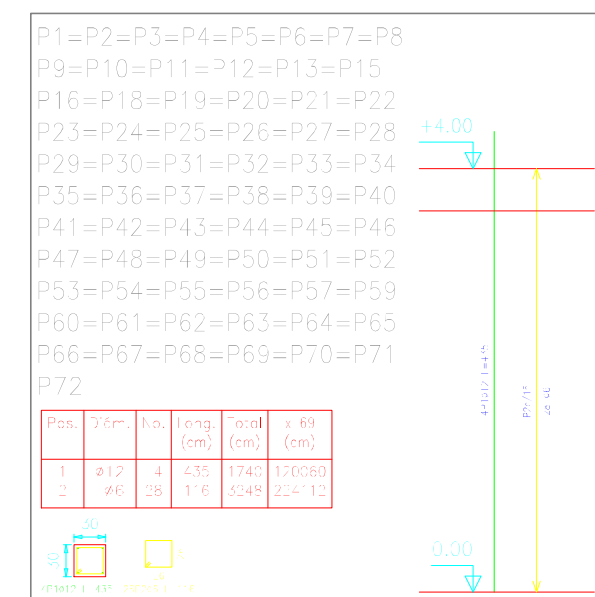
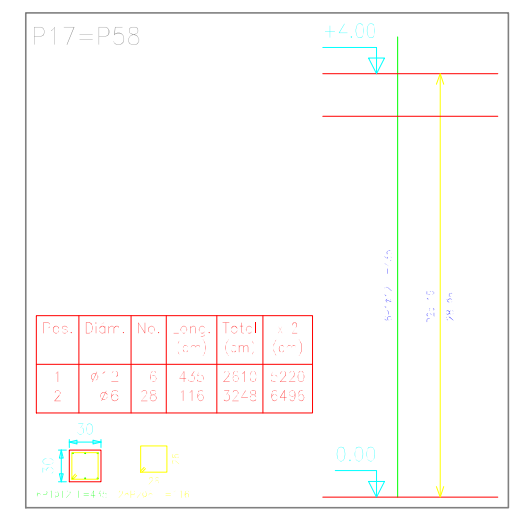


Pilares que terminan en Azotea
Hormigón: H-25 , Control Normal
Acero: AH-500 , Control Normal
Escala: 1:50

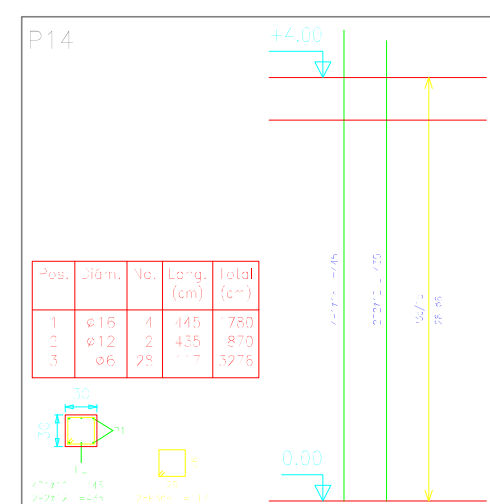


Resumen Acero Armadura Pilares	Long. total (m)	Peso (kg)	Total
Ø12=5000	47	228.2	228.2
Ø8	15	11.5	239.7

Pilares que terminan en Primer piso
Hormigón: H-25 , Control Normal
Acero: A-500 , Control Normal
Escala: 1:50



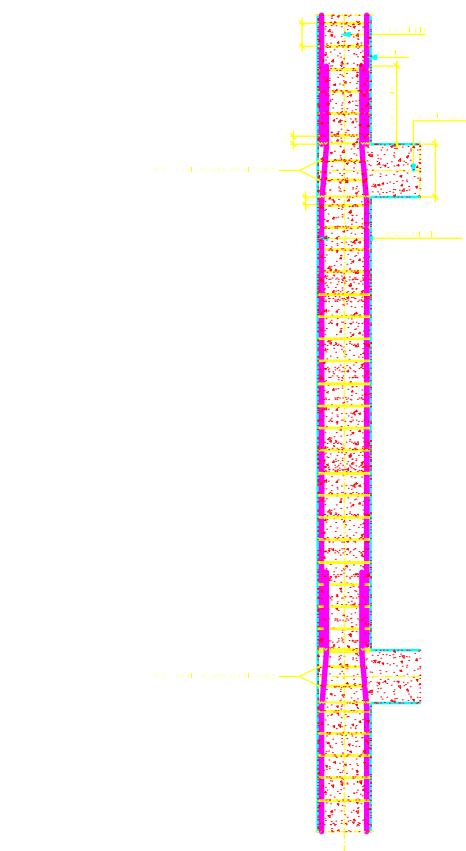
Resumen Acero Armadura Pilares	Long. total (m)	Peso (kg)	Total
Ø12=5000	47	228.2	228.2
Ø8	15	11.5	239.7



ARMADURA DE COLUMNAS

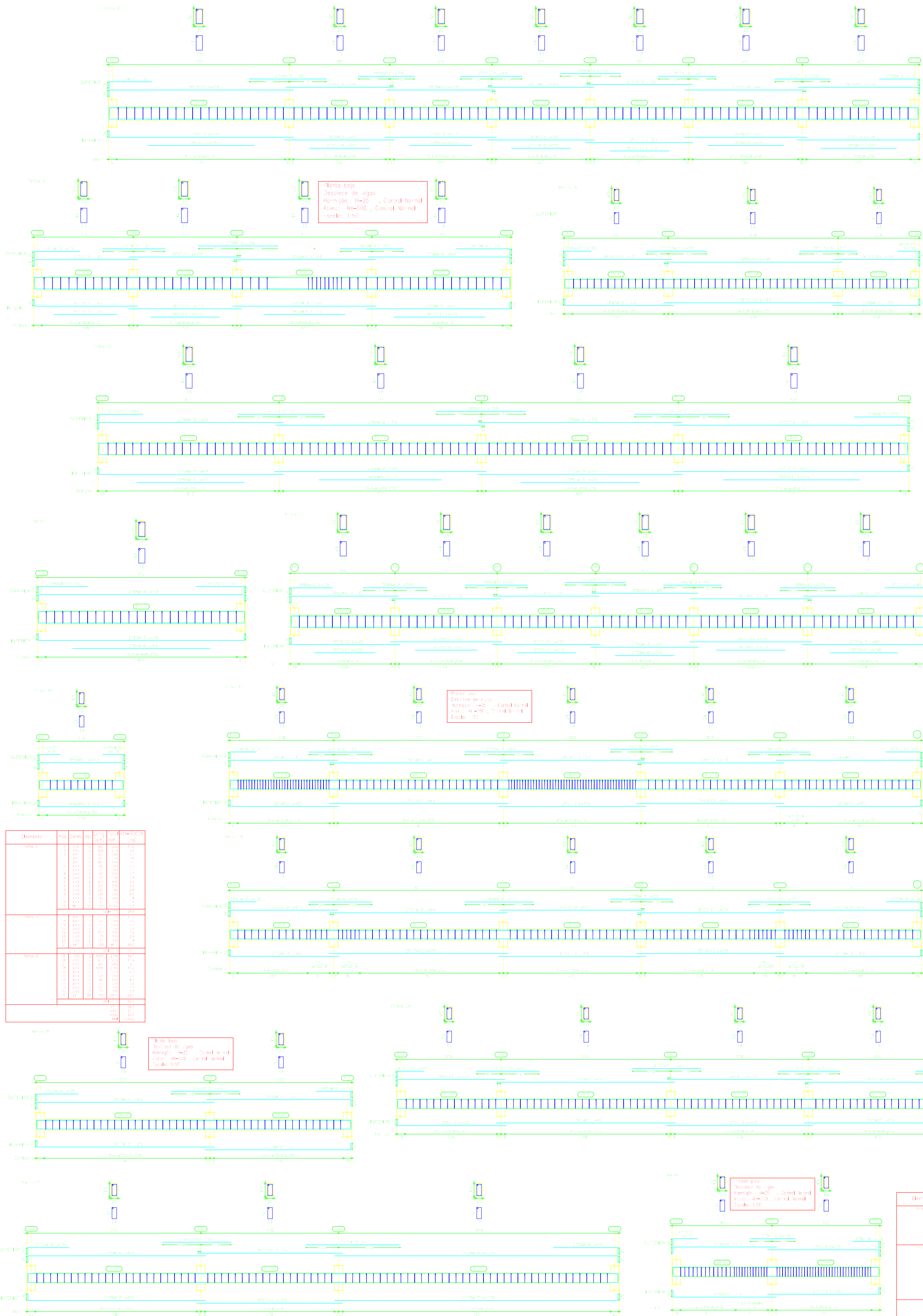
P1=P2=P3=P4=P5=P6=P7=P8 P9=P10=P11=P12=P13=P15 P16=P18=P19=P20=P21=P22 P23=P24=P25=P26=P27=P28 P29=P30=P31=P32=P33=P34 P35=P36=P37=P38=P39=P40 P41=P42=P43=P44=P45=P46 P47=P48=P49=P50=P51=P52 P53=P54=P55=P56=P57=P59 P60=P61=P62=P63=P64=P65 P66=P67=P68=P69=P70=P71 P72	P14	P17=P58	P18=P32	Azotea

Detalle de armadura de pilar

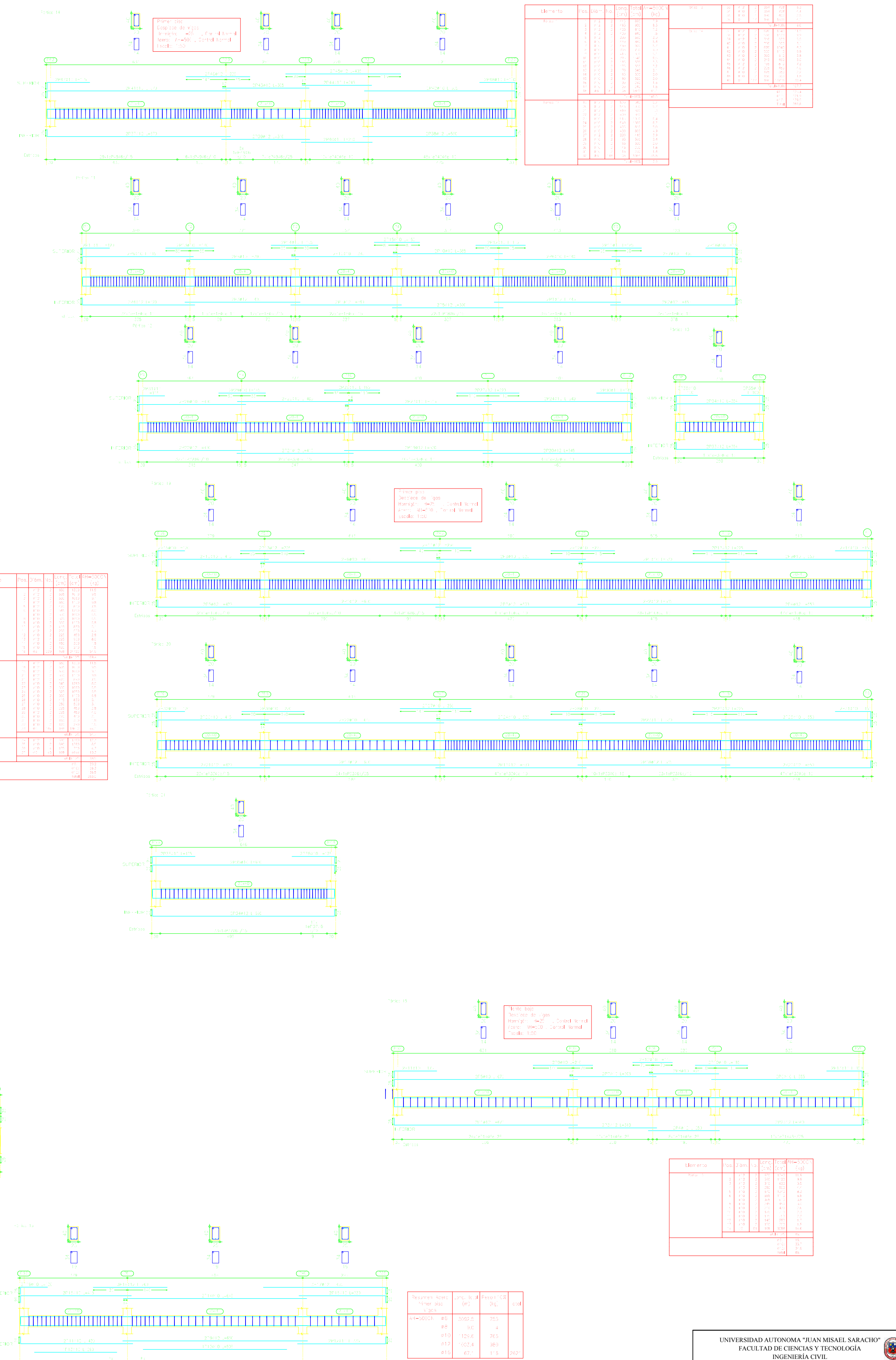


Cuadro de pilares
Hormigón: H-25 , Control Normal
Acero: AH-500 , Control Normal
Escala: 1:50

Resumen Acero Armadura Pilares	Long. total (m)	Peso (kg)	Total
Ø12=5000	47	228.2	228.2
Ø12	15	11.5	239.7



Elemento	Vol	Plant	Clas	Clas	Clas
1	1	1	1	1	1
2	1	1	1	1	1
3	1	1	1	1	1
4	1	1	1	1	1
5	1	1	1	1	1
6	1	1	1	1	1
7	1	1	1	1	1
8	1	1	1	1	1
9	1	1	1	1	1
10	1	1	1	1	1
11	1	1	1	1	1
12	1	1	1	1	1
13	1	1	1	1	1
14	1	1	1	1	1
15	1	1	1	1	1
16	1	1	1	1	1
17	1	1	1	1	1

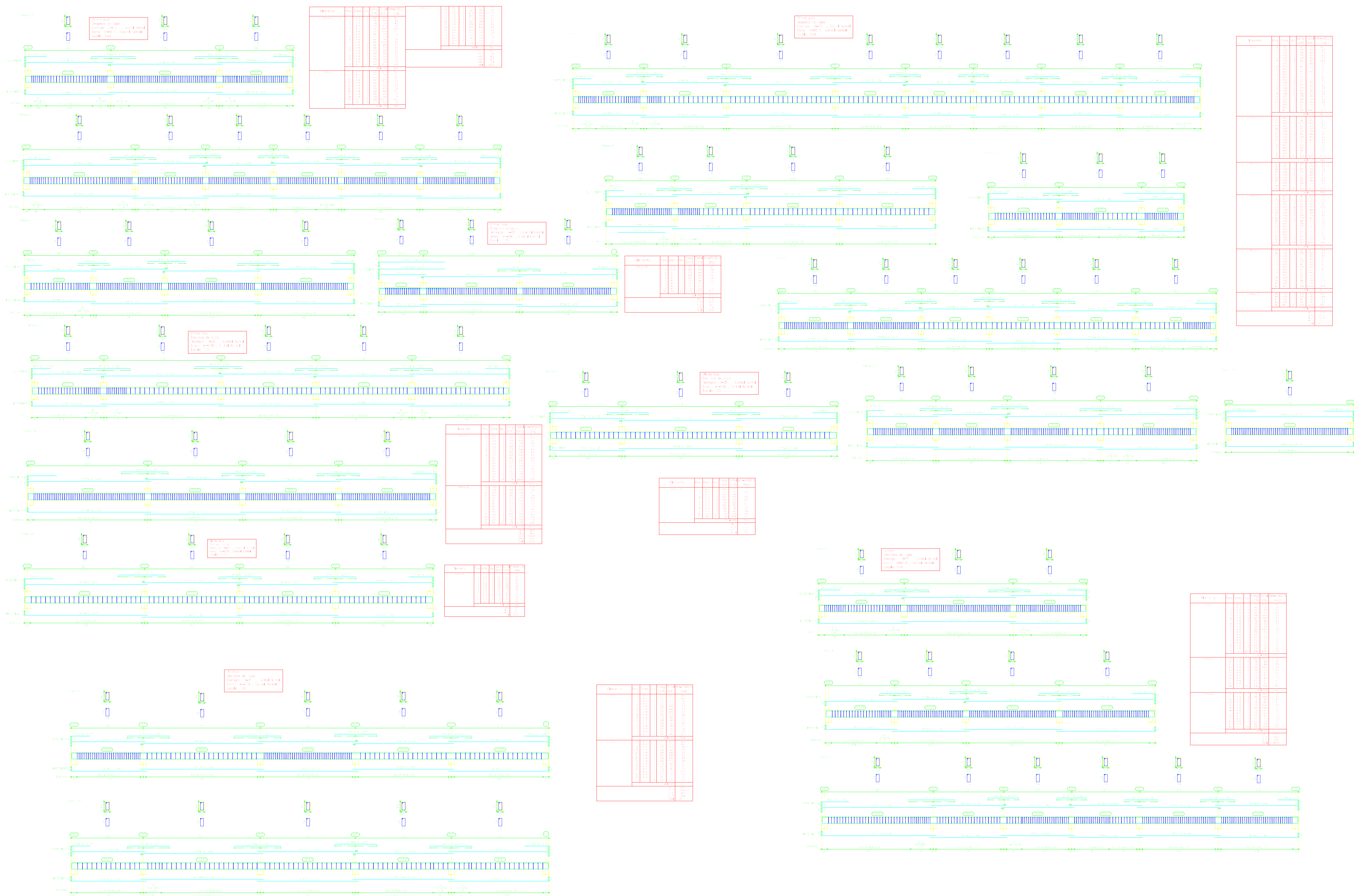


Elemento	Vol	Plant	Clas	Clas	Clas
1	1	1	1	1	1
2	1	1	1	1	1
3	1	1	1	1	1
4	1	1	1	1	1
5	1	1	1	1	1
6	1	1	1	1	1
7	1	1	1	1	1
8	1	1	1	1	1
9	1	1	1	1	1
10	1	1	1	1	1
11	1	1	1	1	1
12	1	1	1	1	1
13	1	1	1	1	1
14	1	1	1	1	1
15	1	1	1	1	1
16	1	1	1	1	1
17	1	1	1	1	1
18	1	1	1	1	1
19	1	1	1	1	1
20	1	1	1	1	1
21	1	1	1	1	1
22	1	1	1	1	1
23	1	1	1	1	1
24	1	1	1	1	1
25	1	1	1	1	1

Elemento	Vol	Plant	Clas	Clas	Clas
1	1	1	1	1	1
2	1	1	1	1	1
3	1	1	1	1	1
4	1	1	1	1	1
5	1	1	1	1	1
6	1	1	1	1	1
7	1	1	1	1	1
8	1	1	1	1	1
9	1	1	1	1	1
10	1	1	1	1	1
11	1	1	1	1	1
12	1	1	1	1	1
13	1	1	1	1	1
14	1	1	1	1	1
15	1	1	1	1	1
16	1	1	1	1	1
17	1	1	1	1	1
18	1	1	1	1	1
19	1	1	1	1	1
20	1	1	1	1	1
21	1	1	1	1	1
22	1	1	1	1	1
23	1	1	1	1	1
24	1	1	1	1	1
25	1	1	1	1	1

Elemento	Vol	Plant	Clas	Clas	Clas
1	1	1	1	1	1
2	1	1	1	1	1
3	1	1	1	1	1
4	1	1	1	1	1
5	1	1	1	1	1
6	1	1	1	1	1
7	1	1	1	1	1
8	1	1	1	1	1
9	1	1	1	1	1
10	1	1	1	1	1
11	1	1	1	1	1
12	1	1	1	1	1
13	1	1	1	1	1
14	1	1	1	1	1
15	1	1	1	1	1
16	1	1	1	1	1
17	1	1	1	1	1
18	1	1	1	1	1
19	1	1	1	1	1
20	1	1	1	1	1
21	1	1	1	1	1
22	1	1	1	1	1
23	1	1	1	1	1
24	1	1	1	1	1
25	1	1	1	1	1

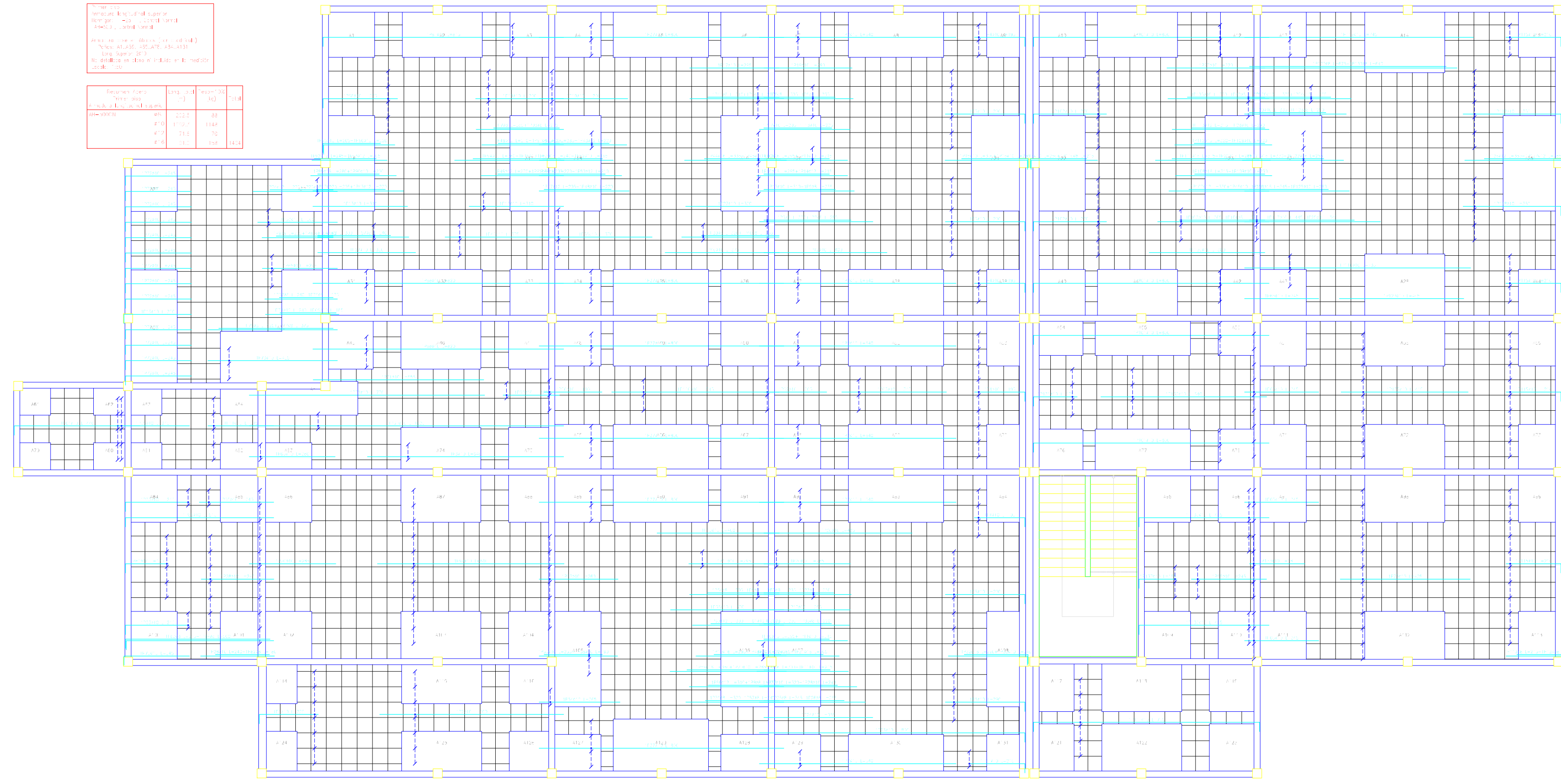
Requisito	Vol	Plant	Clas	Clas	Clas
1	1	1	1	1	1
2	1	1	1	1	1
3	1	1	1	1	1
4	1	1	1	1	1
5	1	1	1	1	1
6	1	1	1	1	1
7	1	1	1	1	1
8	1	1	1	1	1
9	1	1	1	1	1
10	1	1	1	1	1
11	1	1	1	1	1
12	1	1	1	1	1
13	1	1	1	1	1
14	1	1	1	1	1
15	1	1	1	1	1
16	1	1	1	1	1
17	1	1	1	1	1
18	1	1	1	1	1
19	1	1	1	1	1
20	1	1	1	1	1
21	1	1	1	1	1
22	1	1	1	1	1
23	1	1	1	1	1
24	1	1	1	1	1
25	1	1	1	1	1



Span	Concrete (m³)	Steel (kg)	Formwork (m²)
Span 1	12.5	150	150
Span 2	15.0	180	180
Span 3	18.0	220	220
Span 4	20.0	250	250
Span 5	22.0	280	280
Span 6	25.0	320	320
Span 7	28.0	350	350
Span 8	30.0	380	380
Span 9	32.0	400	400
Span 10	35.0	450	450
Span 11	38.0	500	500
Span 12	40.0	550	550
Span 13	42.0	600	600
Span 14	45.0	650	650
Span 15	48.0	700	700
Span 16	50.0	750	750
Span 17	52.0	800	800
Span 18	55.0	850	850
Span 19	58.0	900	900
Span 20	60.0	950	950
Span 21	62.0	1000	1000
Span 22	65.0	1050	1050
Span 23	68.0	1100	1100
Span 24	70.0	1150	1150
Span 25	72.0	1200	1200
Span 26	75.0	1250	1250
Span 27	78.0	1300	1300
Span 28	80.0	1350	1350
Span 29	82.0	1400	1400
Span 30	85.0	1450	1450
Span 31	88.0	1500	1500
Span 32	90.0	1550	1550
Span 33	92.0	1600	1600
Span 34	95.0	1650	1650
Span 35	98.0	1700	1700
Span 36	100.0	1750	1750
Span 37	102.0	1800	1800
Span 38	105.0	1850	1850
Span 39	108.0	1900	1900
Span 40	110.0	1950	1950
Span 41	112.0	2000	2000
Span 42	115.0	2050	2050
Span 43	118.0	2100	2100
Span 44	120.0	2150	2150
Span 45	122.0	2200	2200
Span 46	125.0	2250	2250
Span 47	128.0	2300	2300
Span 48	130.0	2350	2350
Span 49	132.0	2400	2400
Span 50	135.0	2450	2450
Span 51	138.0	2500	2500
Span 52	140.0	2550	2550
Span 53	142.0	2600	2600
Span 54	145.0	2650	2650
Span 55	148.0	2700	2700
Span 56	150.0	2750	2750
Span 57	152.0	2800	2800
Span 58	155.0	2850	2850
Span 59	158.0	2900	2900
Span 60	160.0	2950	2950
Span 61	162.0	3000	3000
Span 62	165.0	3050	3050
Span 63	168.0	3100	3100
Span 64	170.0	3150	3150
Span 65	172.0	3200	3200
Span 66	175.0	3250	3250
Span 67	178.0	3300	3300
Span 68	180.0	3350	3350
Span 69	182.0	3400	3400
Span 70	185.0	3450	3450
Span 71	188.0	3500	3500
Span 72	190.0	3550	3550
Span 73	192.0	3600	3600
Span 74	195.0	3650	3650
Span 75	198.0	3700	3700
Span 76	200.0	3750	3750
Span 77	202.0	3800	3800
Span 78	205.0	3850	3850
Span 79	208.0	3900	3900
Span 80	210.0	3950	3950
Span 81	212.0	4000	4000
Span 82	215.0	4050	4050
Span 83	218.0	4100	4100
Span 84	220.0	4150	4150
Span 85	222.0	4200	4200
Span 86	225.0	4250	4250
Span 87	228.0	4300	4300
Span 88	230.0	4350	4350
Span 89	232.0	4400	4400
Span 90	235.0	4450	4450
Span 91	238.0	4500	4500
Span 92	240.0	4550	4550
Span 93	242.0	4600	4600
Span 94	245.0	4650	4650
Span 95	248.0	4700	4700
Span 96	250.0	4750	4750
Span 97	252.0	4800	4800
Span 98	255.0	4850	4850
Span 99	258.0	4900	4900
Span 100	260.0	4950	4950

1. Verificar la resistencia de los muros
 2. Verificar la resistencia de los pilares
 3. Verificar la resistencia de los vigas
 4. Verificar la resistencia de los suelos

Resistencia	Long. (cm)	Resistencia (kg/cm ²)	Resistencia (kg/cm ²)
Módulo de elasticidad	21000	1000	1000
Resistencia	1000	1000	1000
Resistencia	1000	1000	1000
Resistencia	1000	1000	1000



Detalle	Descripción	Material	Observaciones
1	Columna	AC-20	
2	Viga	AC-20	
3	Pared	AC-20	
4	Suelo	AC-20	

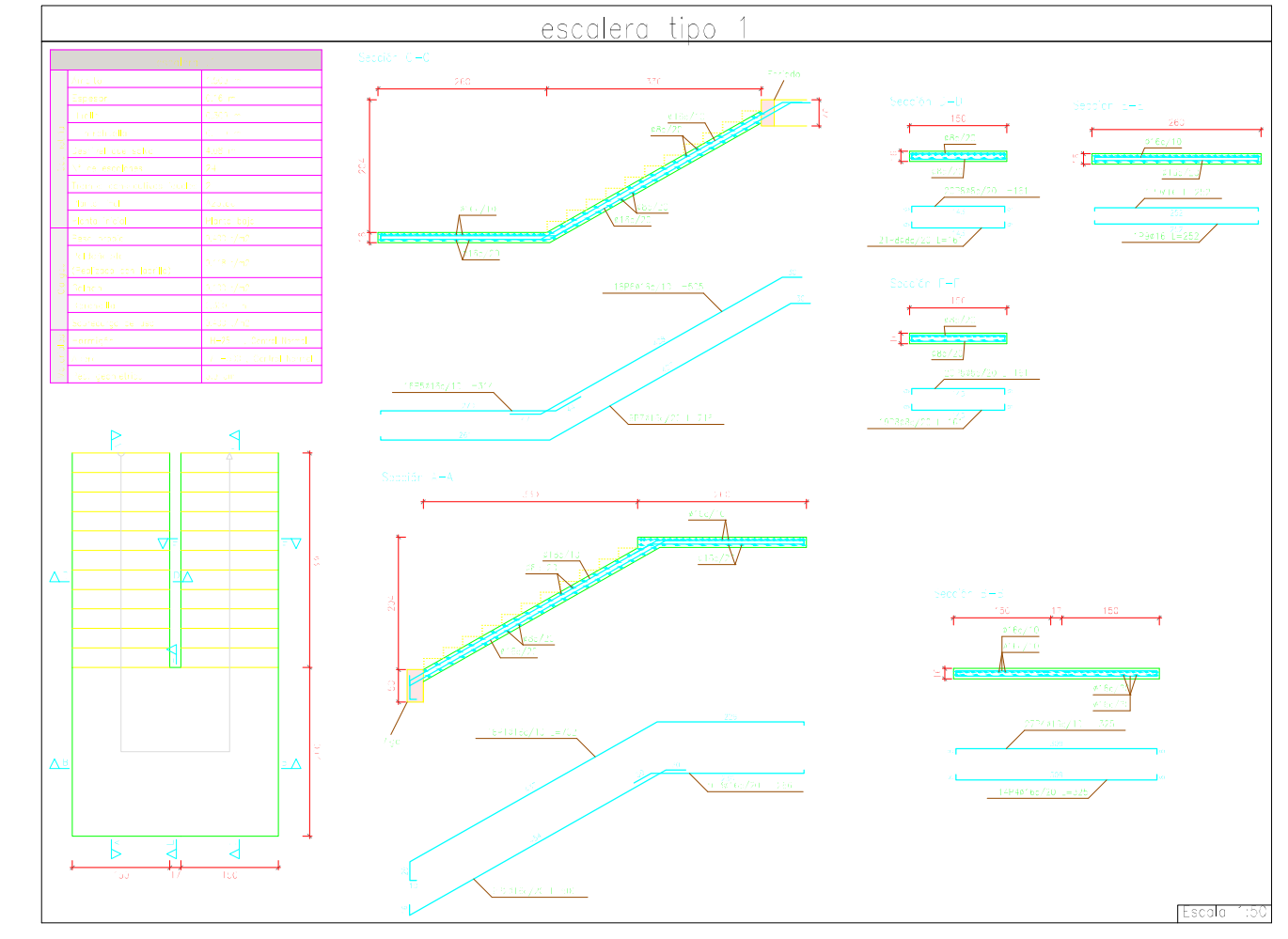
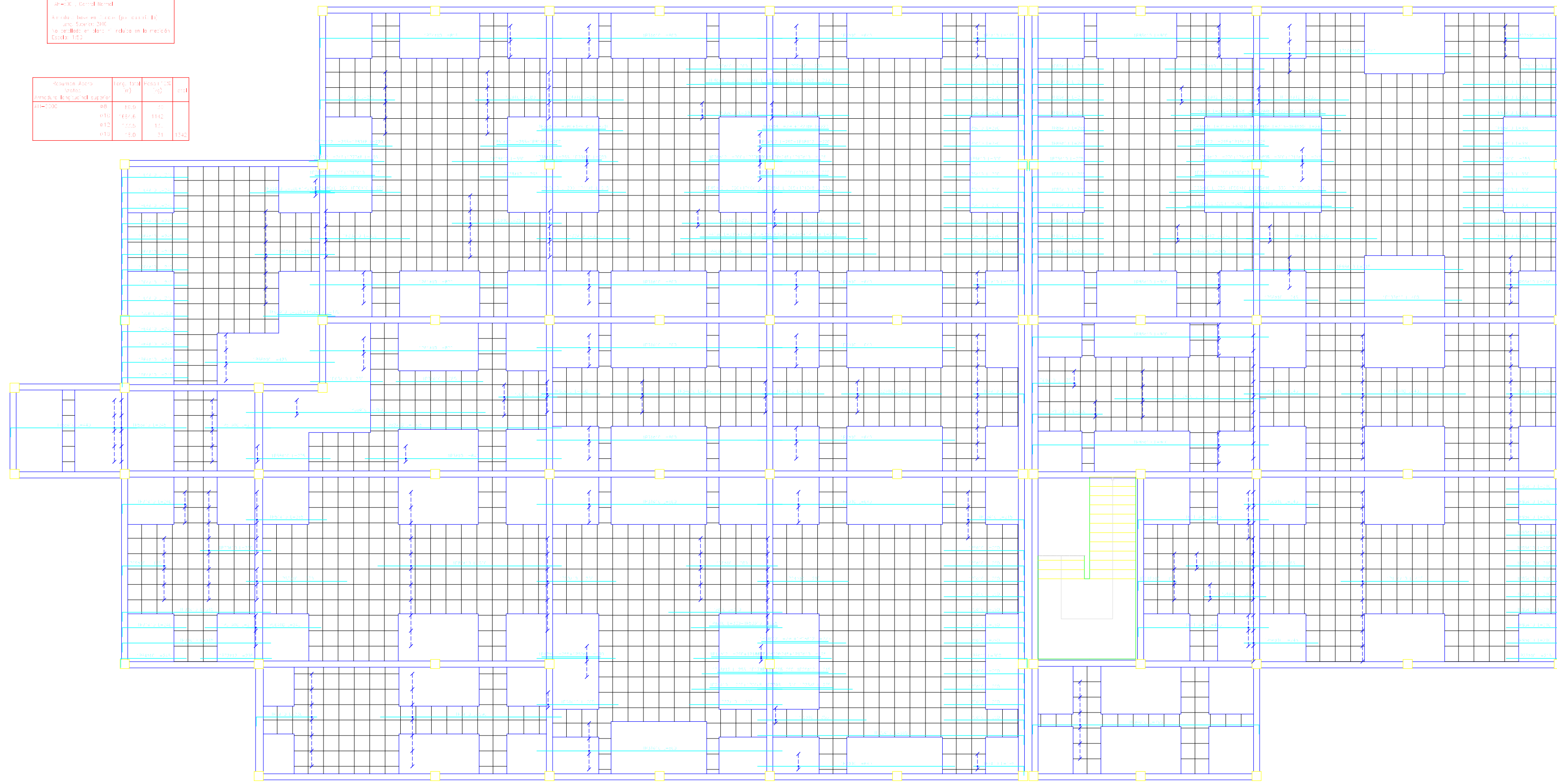
Detalle	Descripción	Material	Observaciones
5	Columna	AC-20	
6	Viga	AC-20	
7	Pared	AC-20	
8	Suelo	AC-20	

Detalle	Descripción	Material	Observaciones
9	Columna	AC-20	
10	Viga	AC-20	
11	Pared	AC-20	
12	Suelo	AC-20	

Detalle	Descripción	Material	Observaciones
13	Columna	AC-20	
14	Viga	AC-20	
15	Pared	AC-20	
16	Suelo	AC-20	

1. Verificar la resistencia de los muros
 2. Verificar la resistencia de los pilares
 3. Verificar la resistencia de los vigas
 4. Verificar la resistencia de los suelos

Resistencia	Long. (cm)	Resistencia (kg/cm ²)	Resistencia (kg/cm ²)
Módulo de elasticidad	21000	1000	1000
Resistencia	1000	1000	1000
Resistencia	1000	1000	1000
Resistencia	1000	1000	1000



Detalle	Descripción	Material	Observaciones
1	Columna	AC-20	
2	Viga	AC-20	
3	Pared	AC-20	
4	Suelo	AC-20	

Detalle	Descripción	Material	Observaciones
5	Columna	AC-20	
6	Viga	AC-20	
7	Pared	AC-20	
8	Suelo	AC-20	