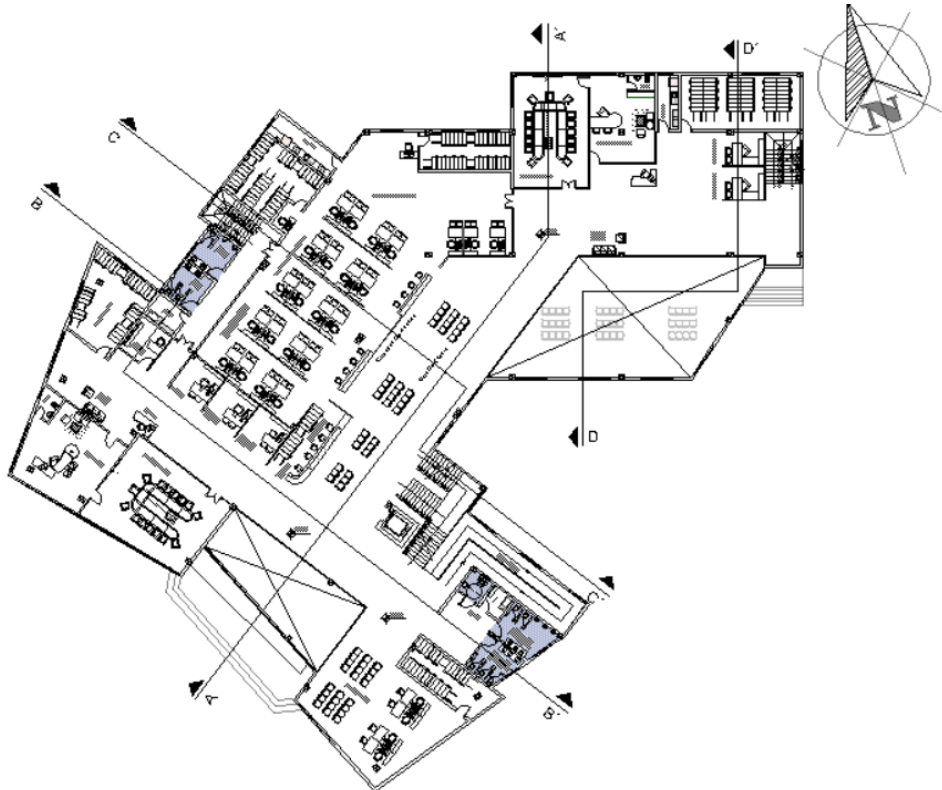
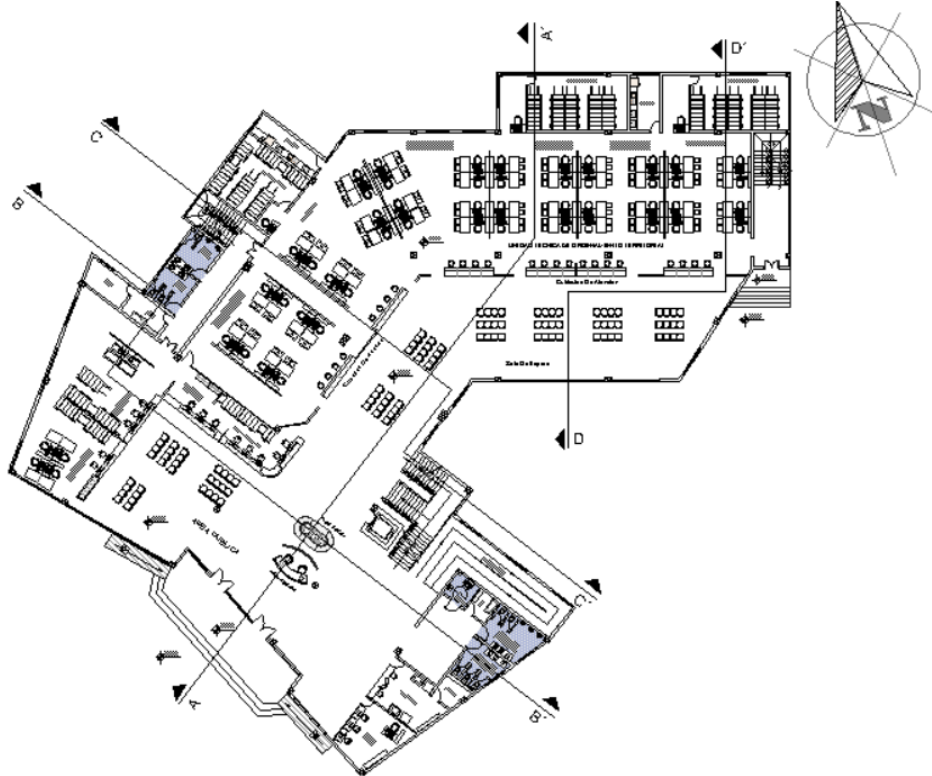


PLANIMETRIA GENERAL

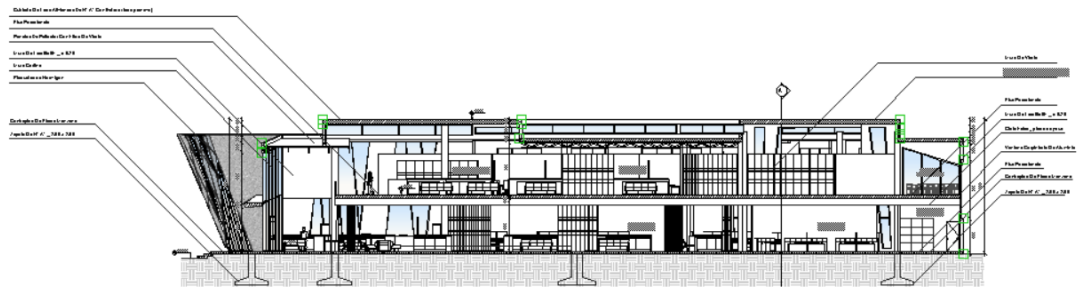
Esc. 1.200



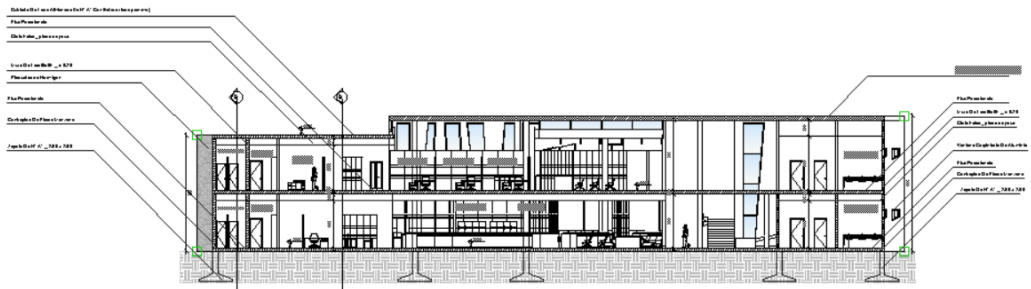
PLANTAS AMOBLADAS



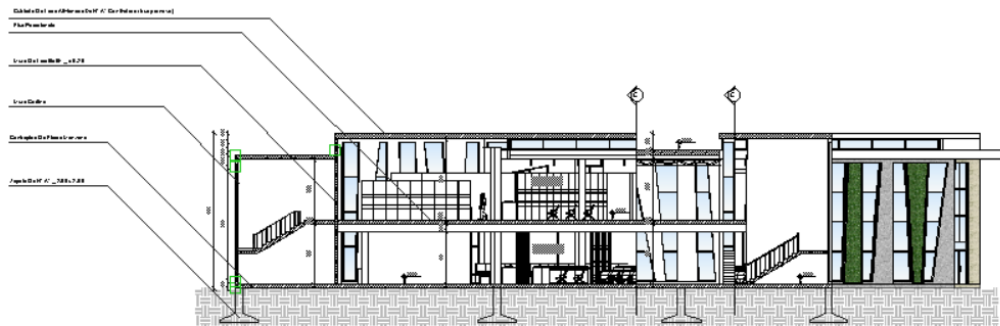
CORTES



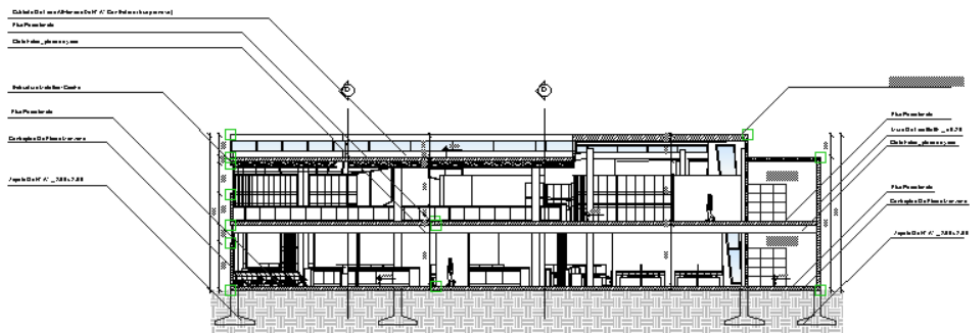
CORTE LONGITUDINAL A - A'



CORTE TRANSVERSAL B - B'



CORTE TRANSVERSAL C - C'



CORTE TRANSVERSAL D - D'

FACHADAS



--- FACHADA PRINCIPAL --- Esc. 1:100



--- FACHADA LATERAL DERECHA --- Esc. 1:100



--- FACHADA LATERAL IZQUIERDA --- Esc. 1:100



--- FACHADA POSTERIOR --- Esc. 1:100

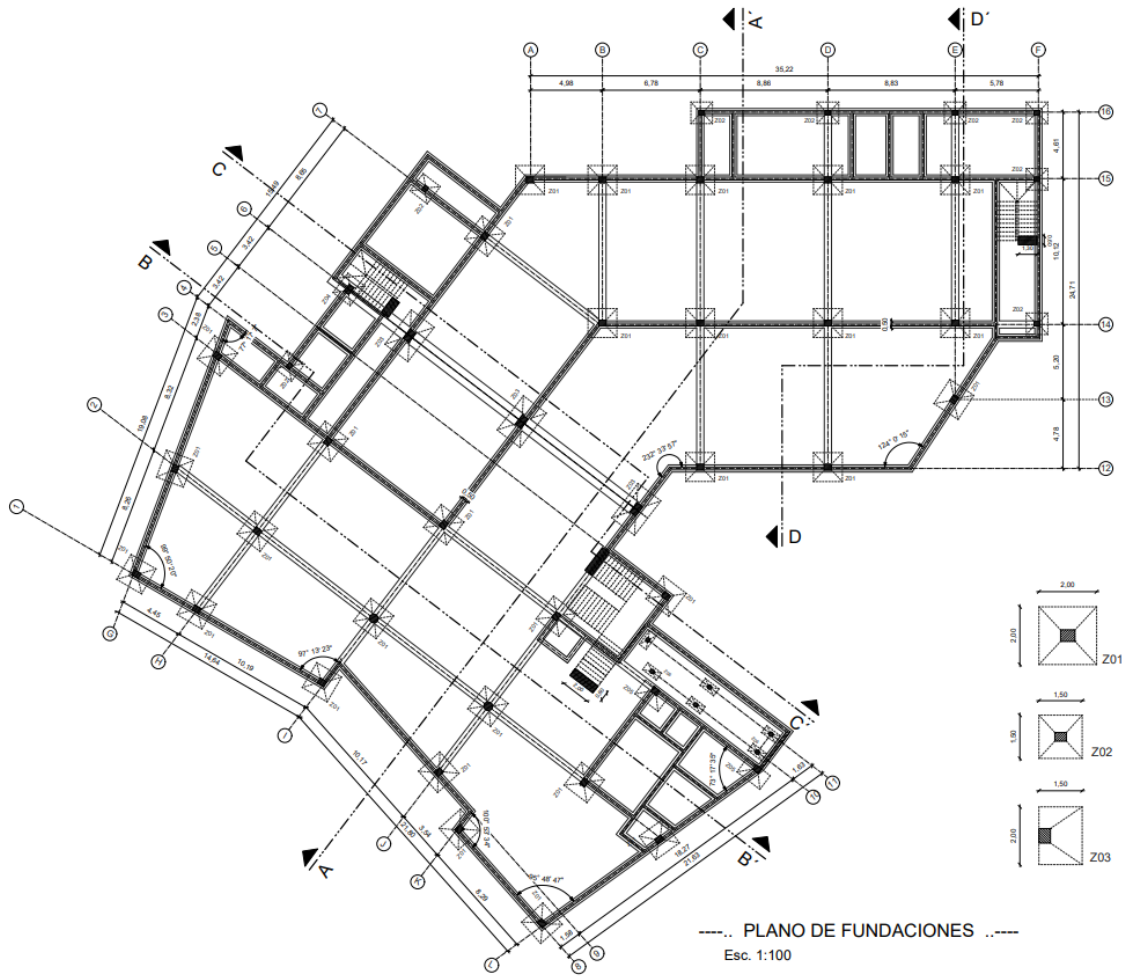
PLANO DE SITIO Y TECHO

Esc. 1.200



PLANO DE FUNDACIONES

Esc. 1:100



PERSPECTIVAS EXTERIORES



PERSPECTIVAS INTERIORES

