



LAMINA N°:

06/24

PROYECTO ARQUITECTONICO: PARQUE DE MINIGOLF PARA LA CIUDAD DE TARIJA

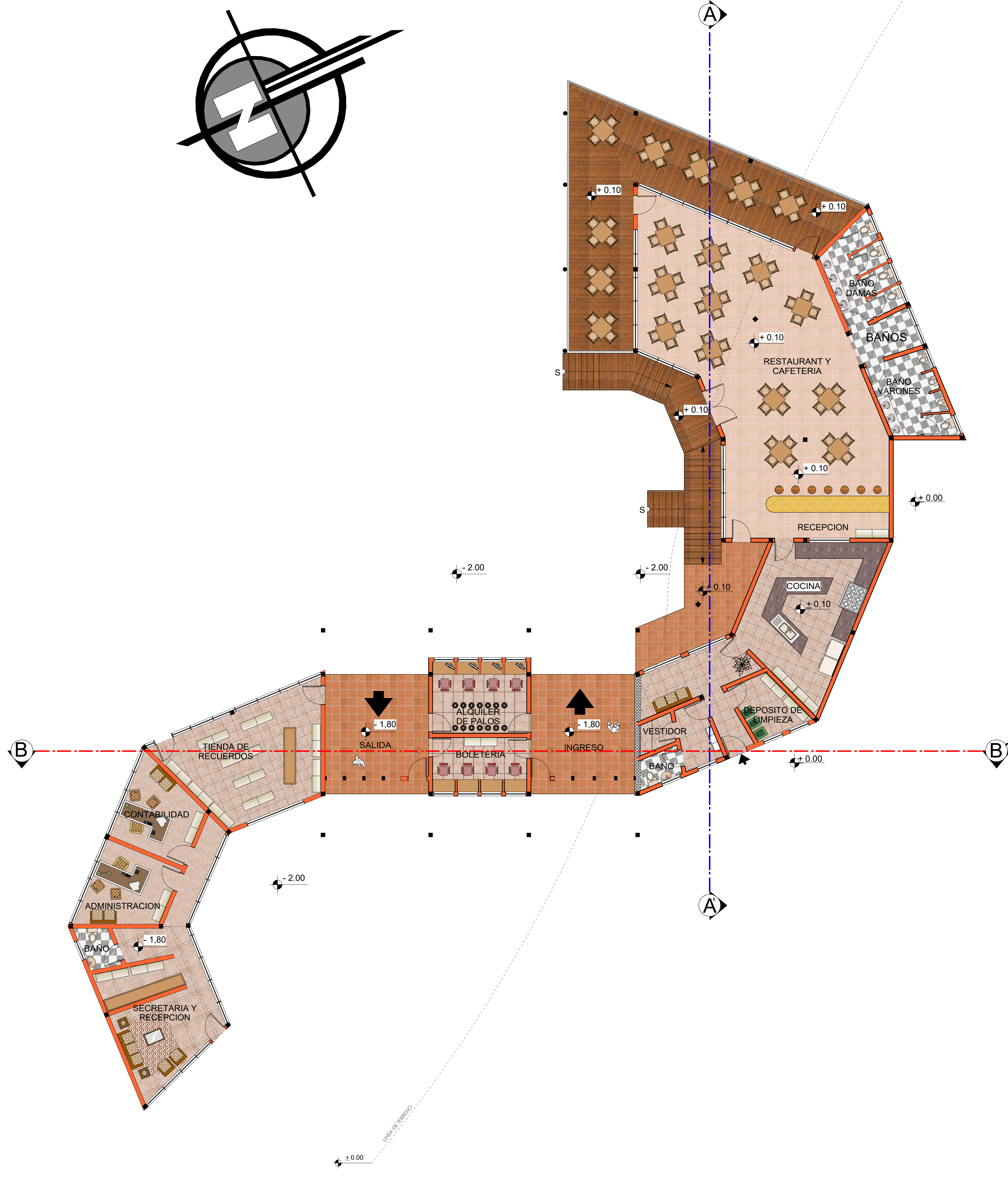
FACULTAD DE CIENCIAS Y TECNOLOGIA

CARRERA DE ARQUITECTURA Y URBANISMO

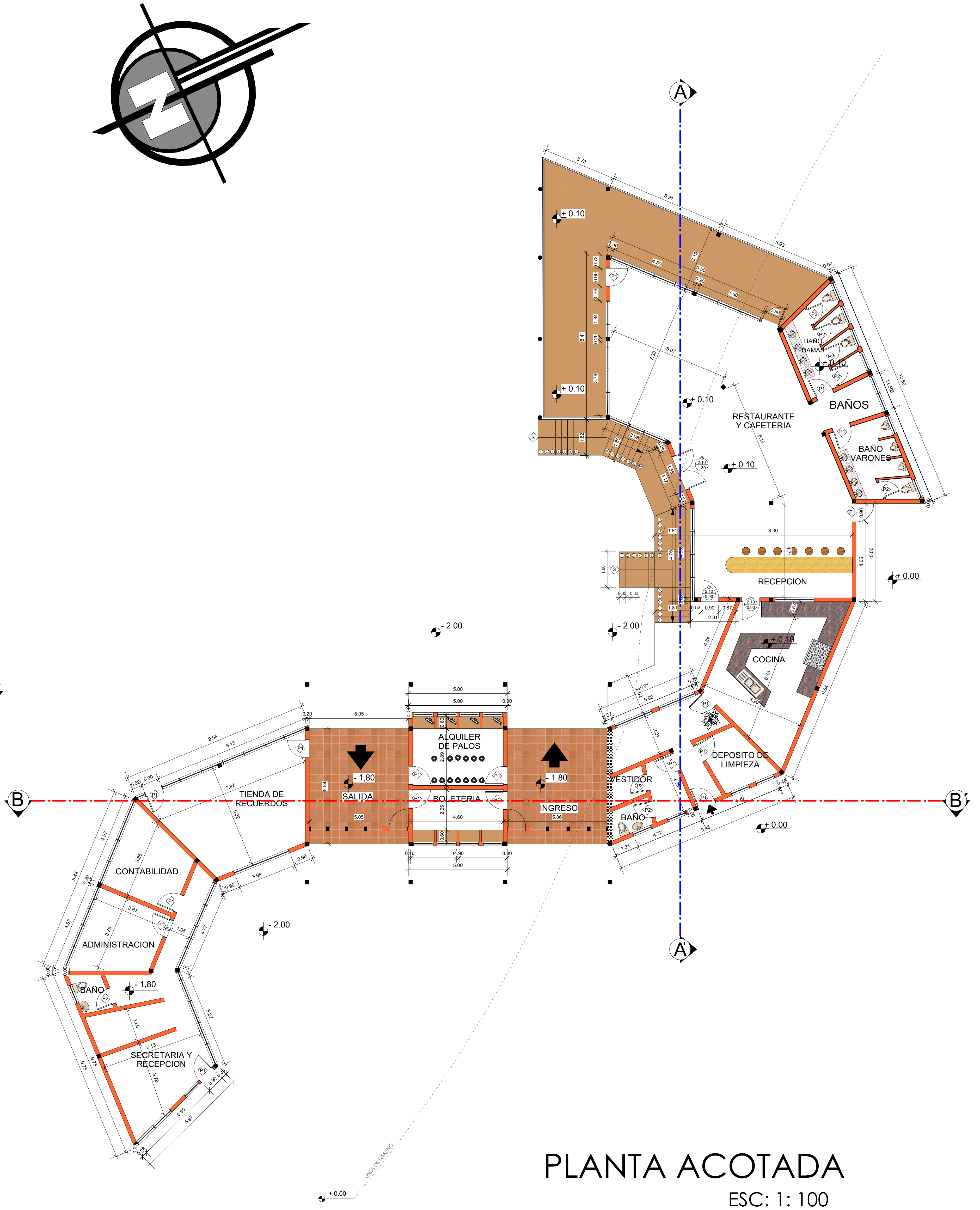
ESTUDIANTE: CAROLA ALEJANDRA SOTO CALIZAYA

TIPO DE LAMINA: PLANTA AMOBLADA Y ACOTADA BLOQUE No 1

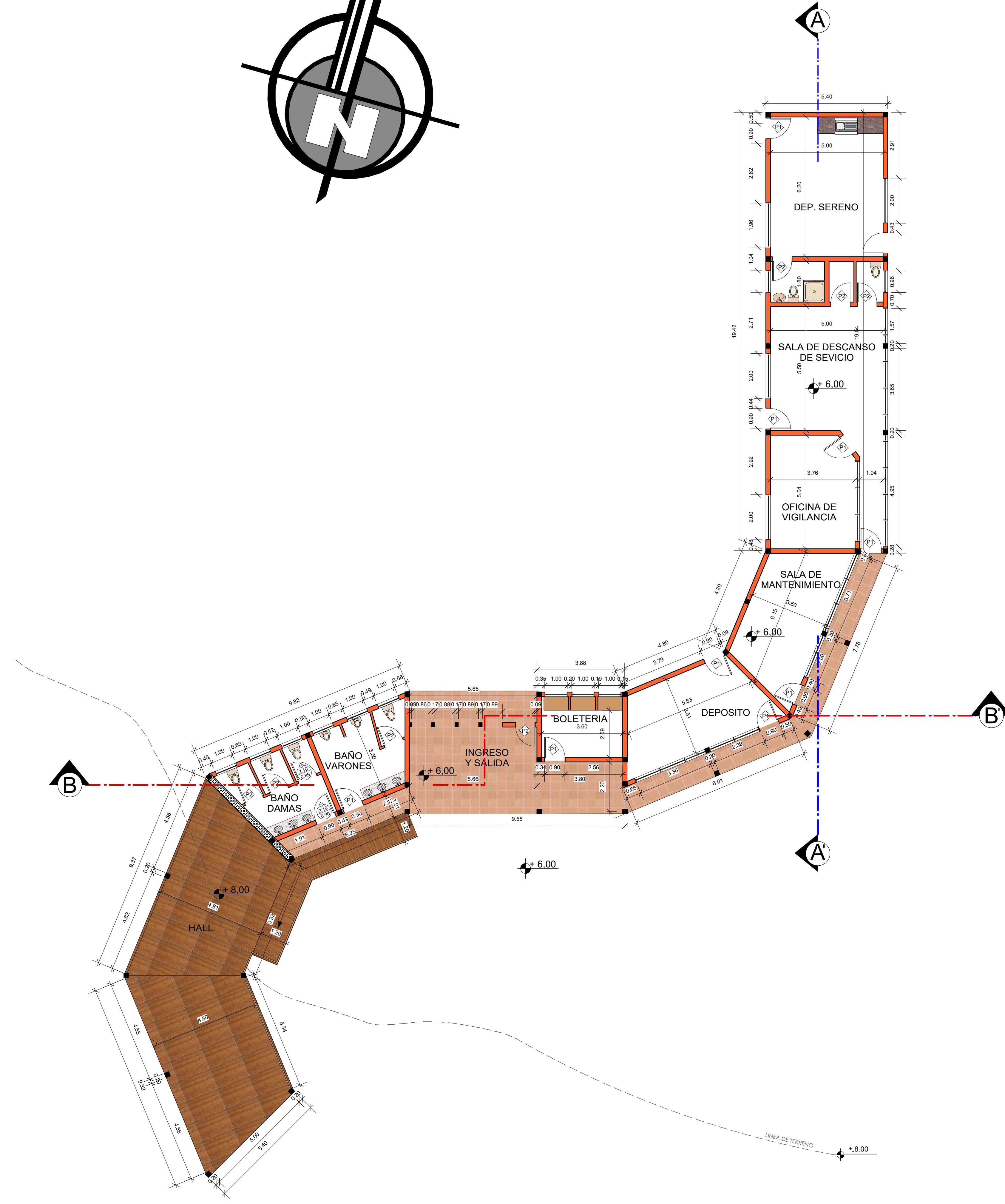
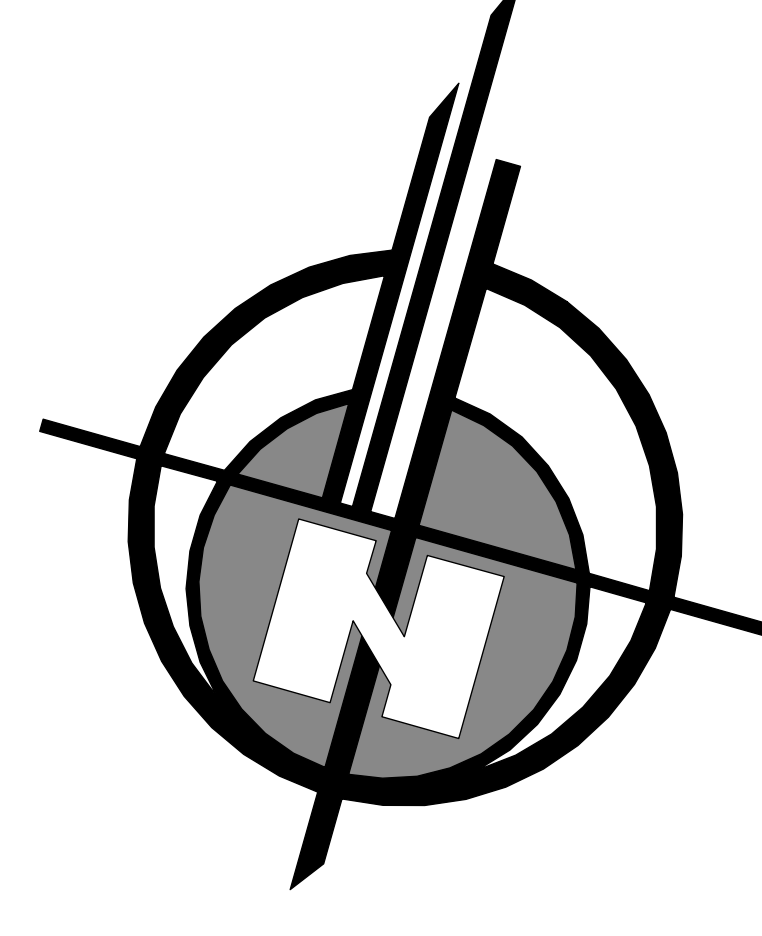
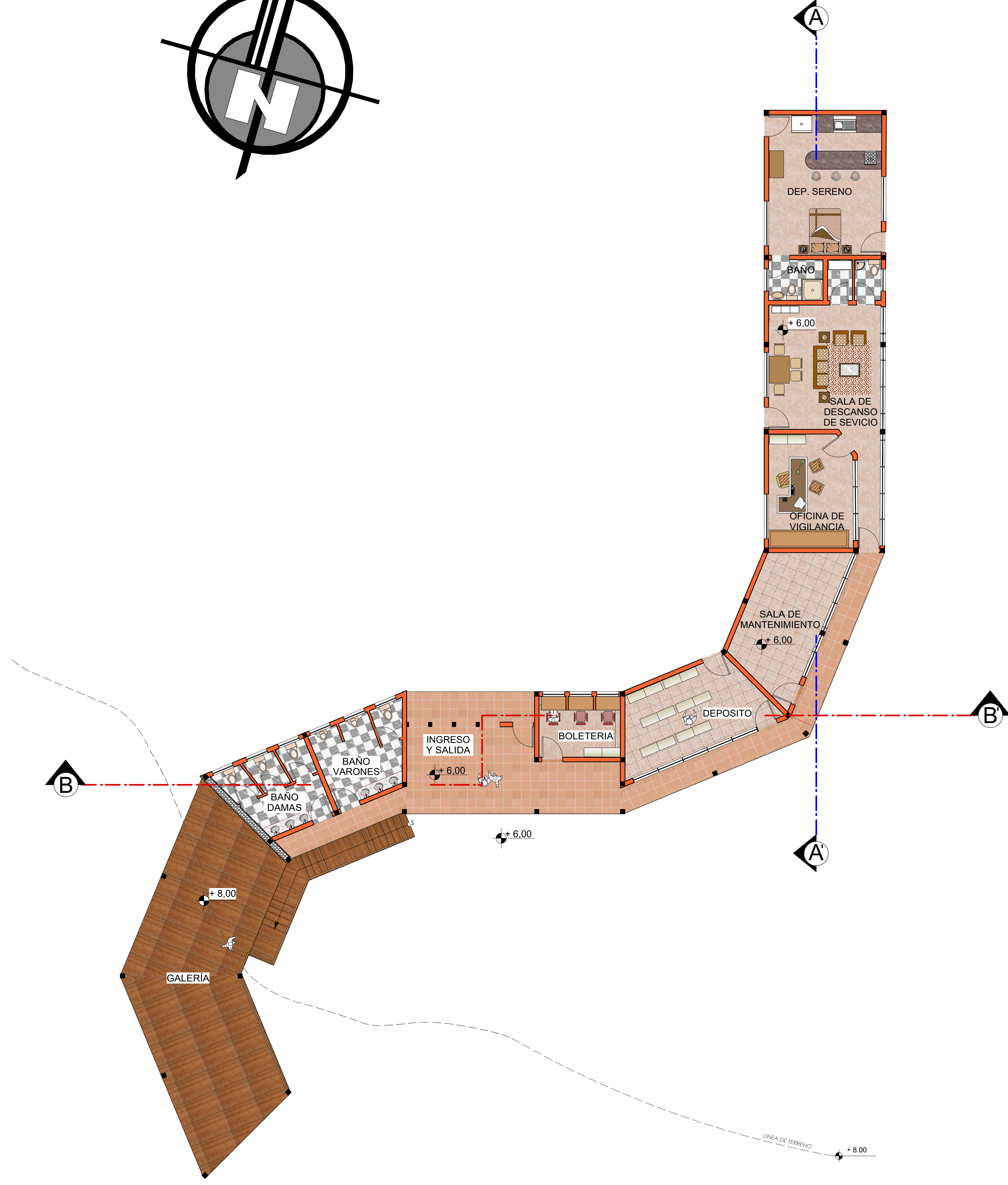
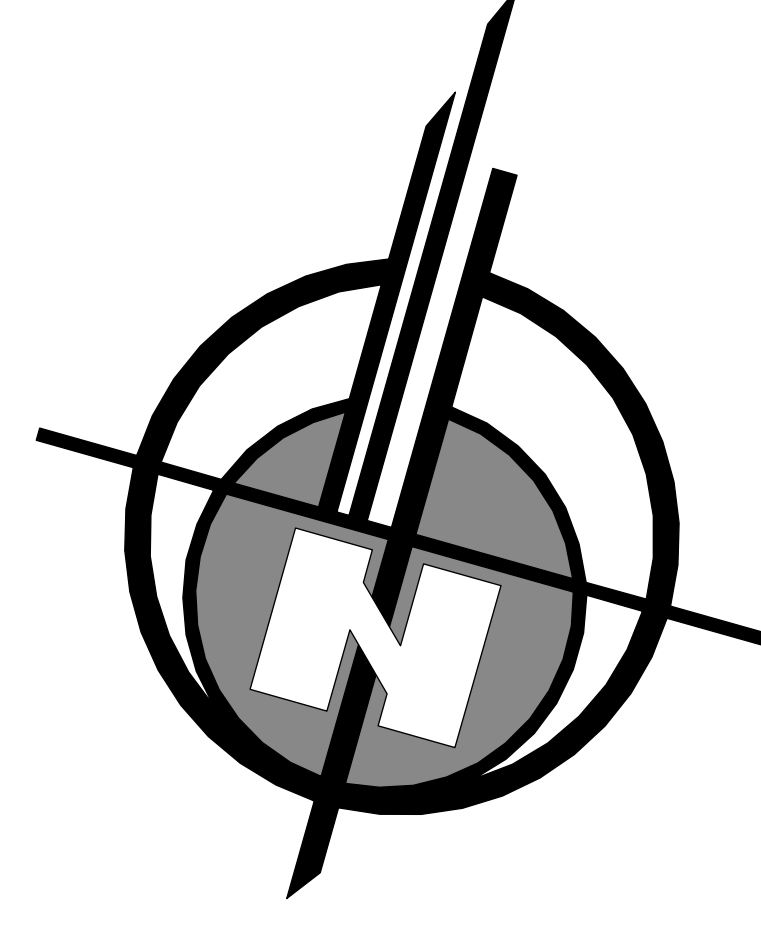
ESCALA: 1:100

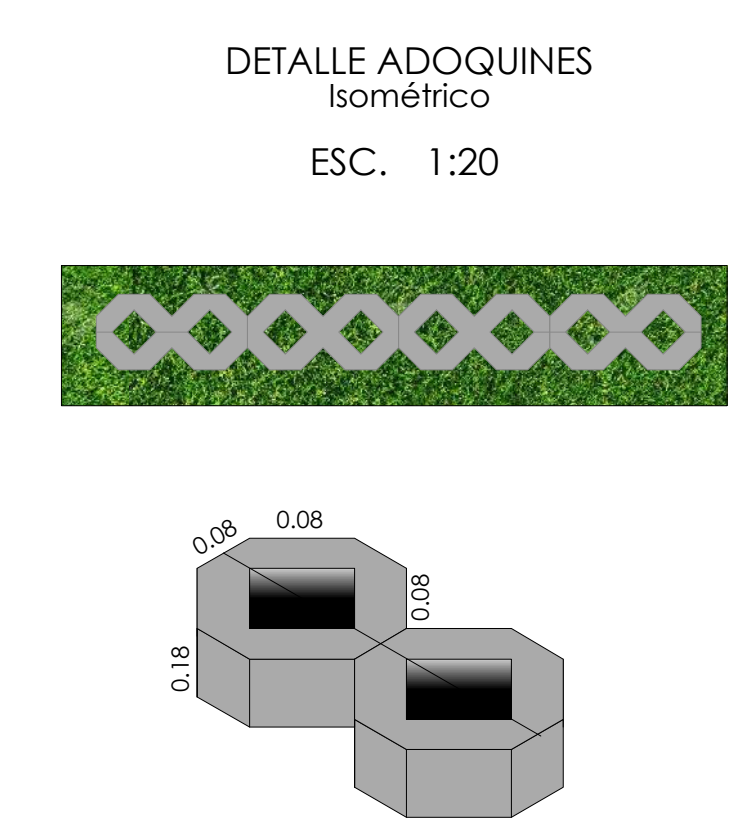
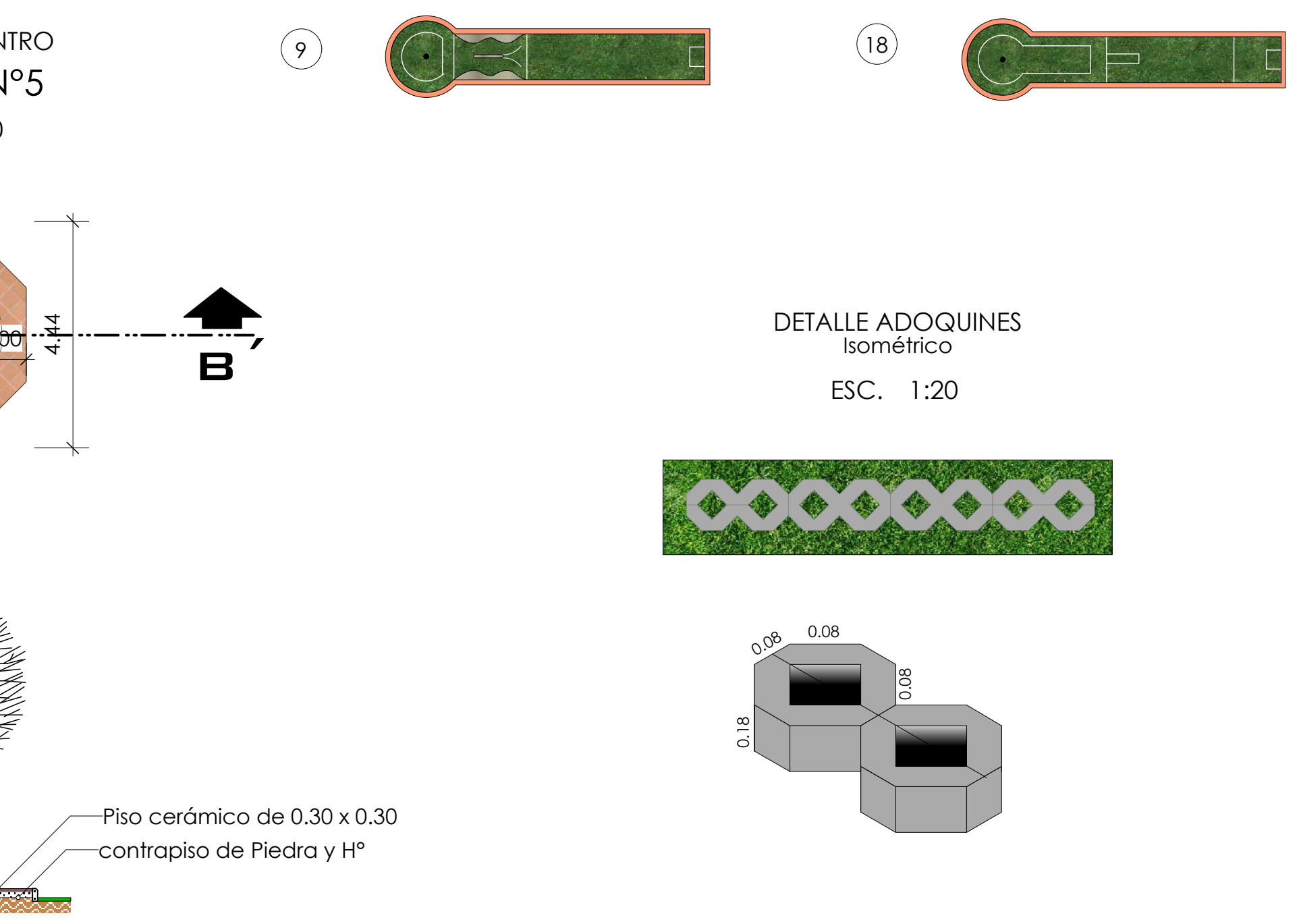
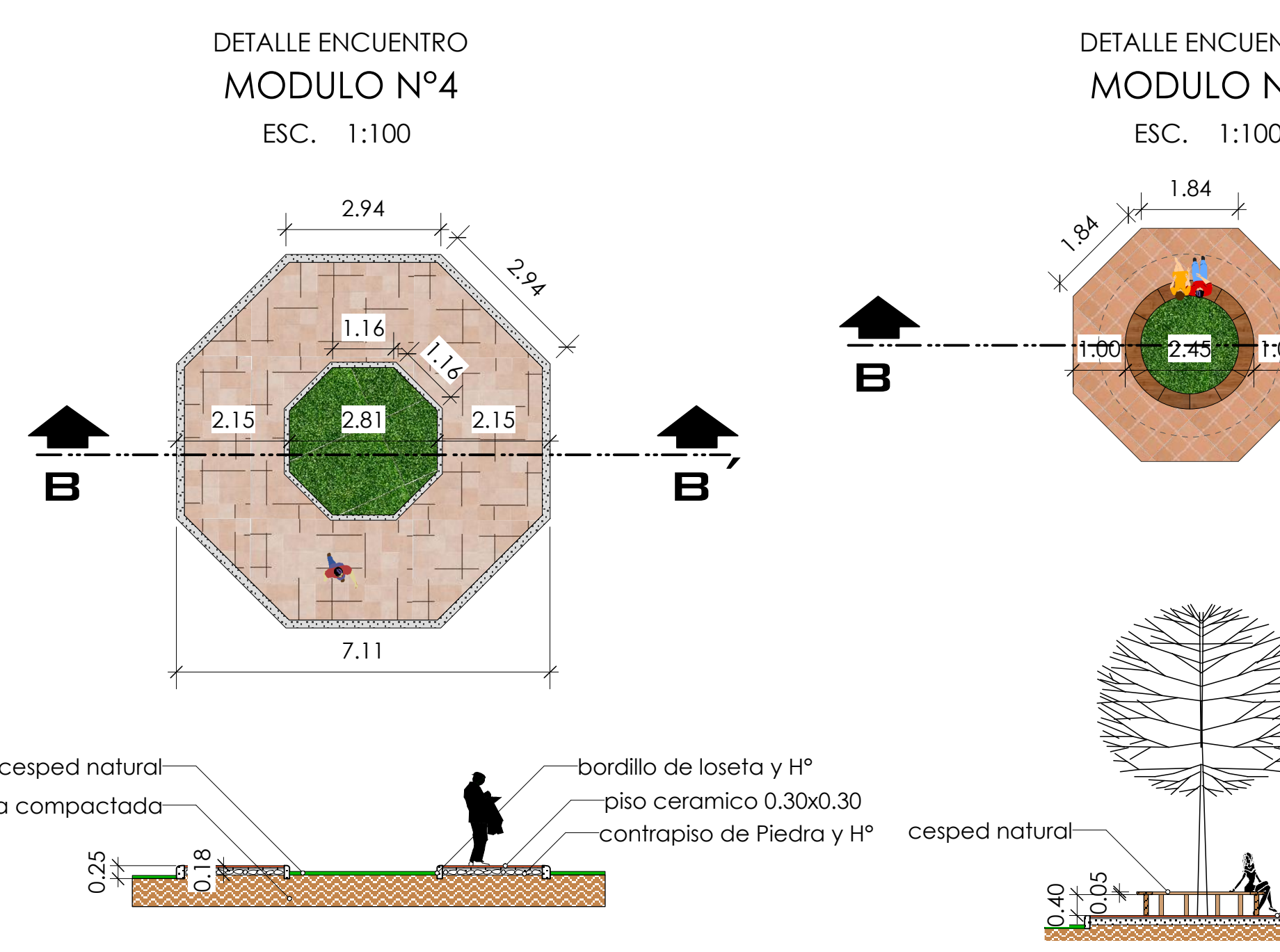
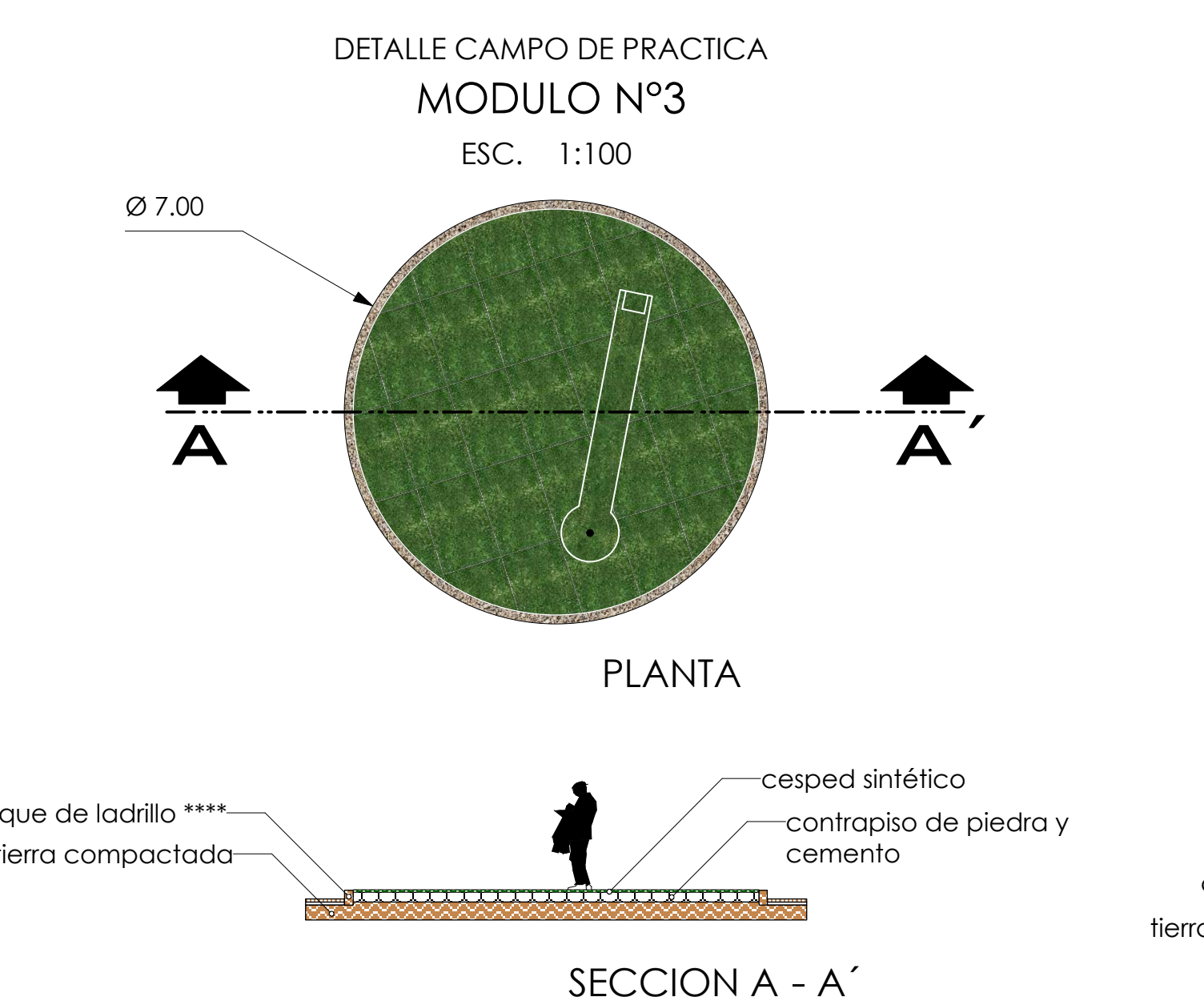
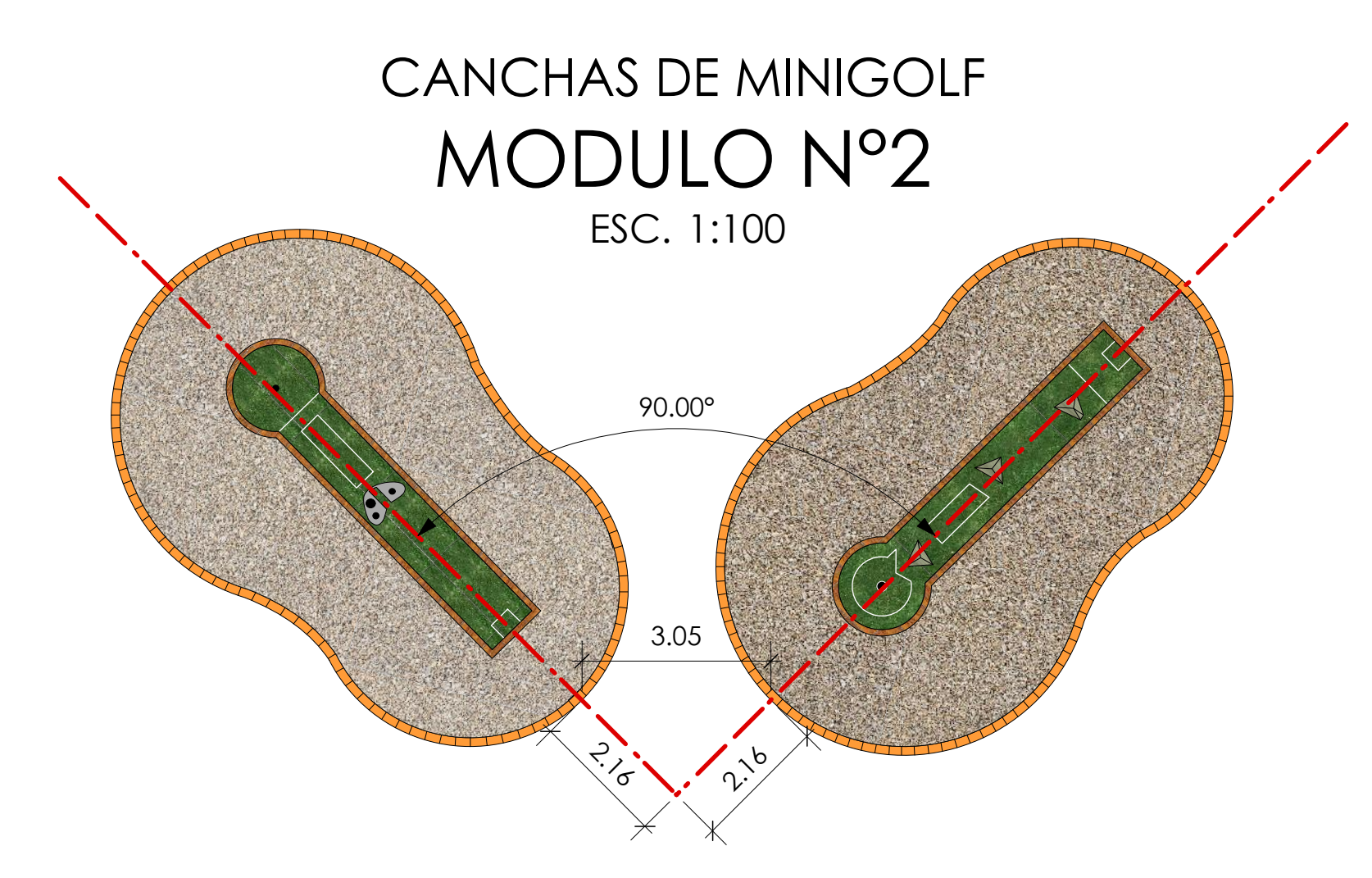
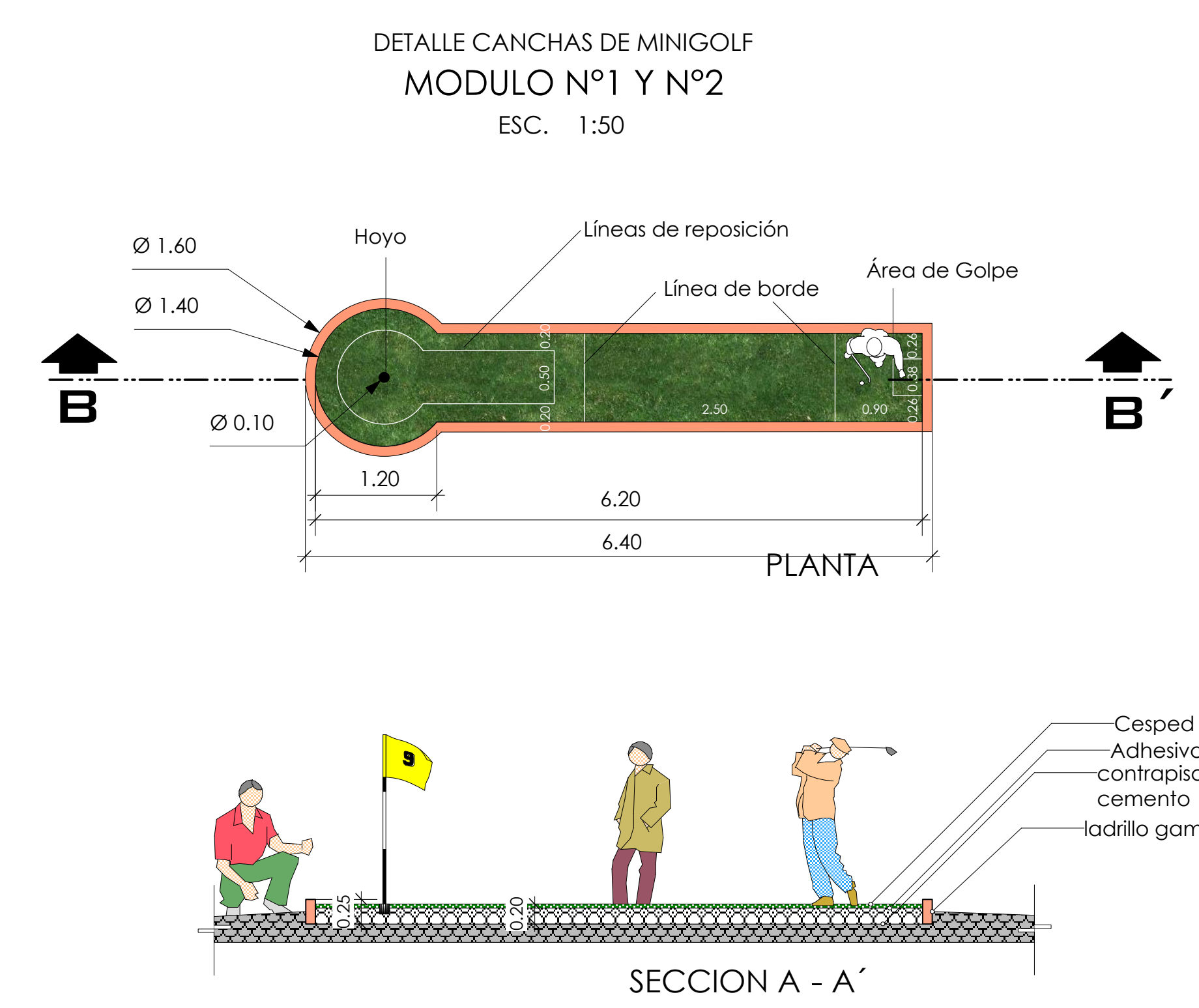
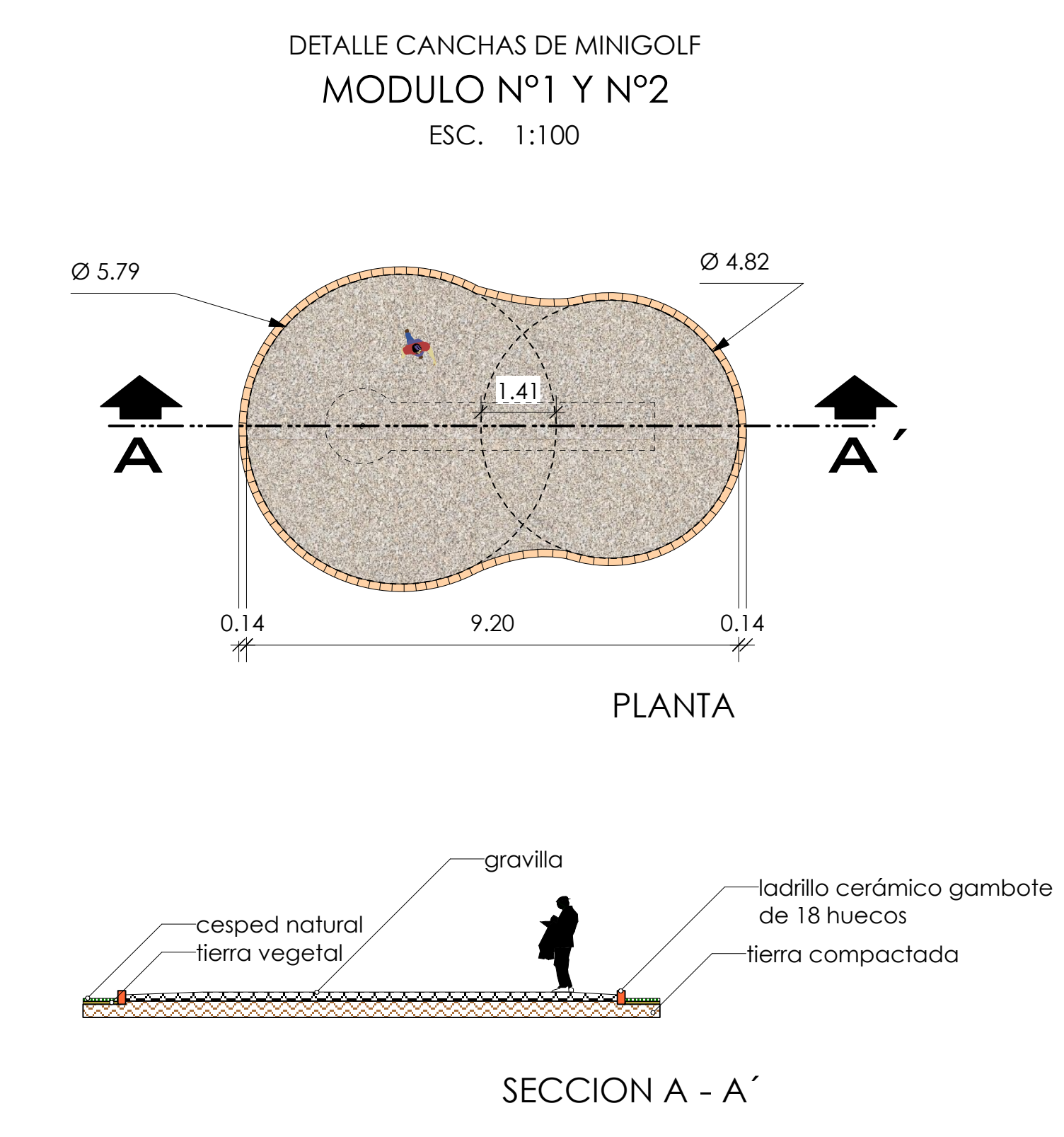
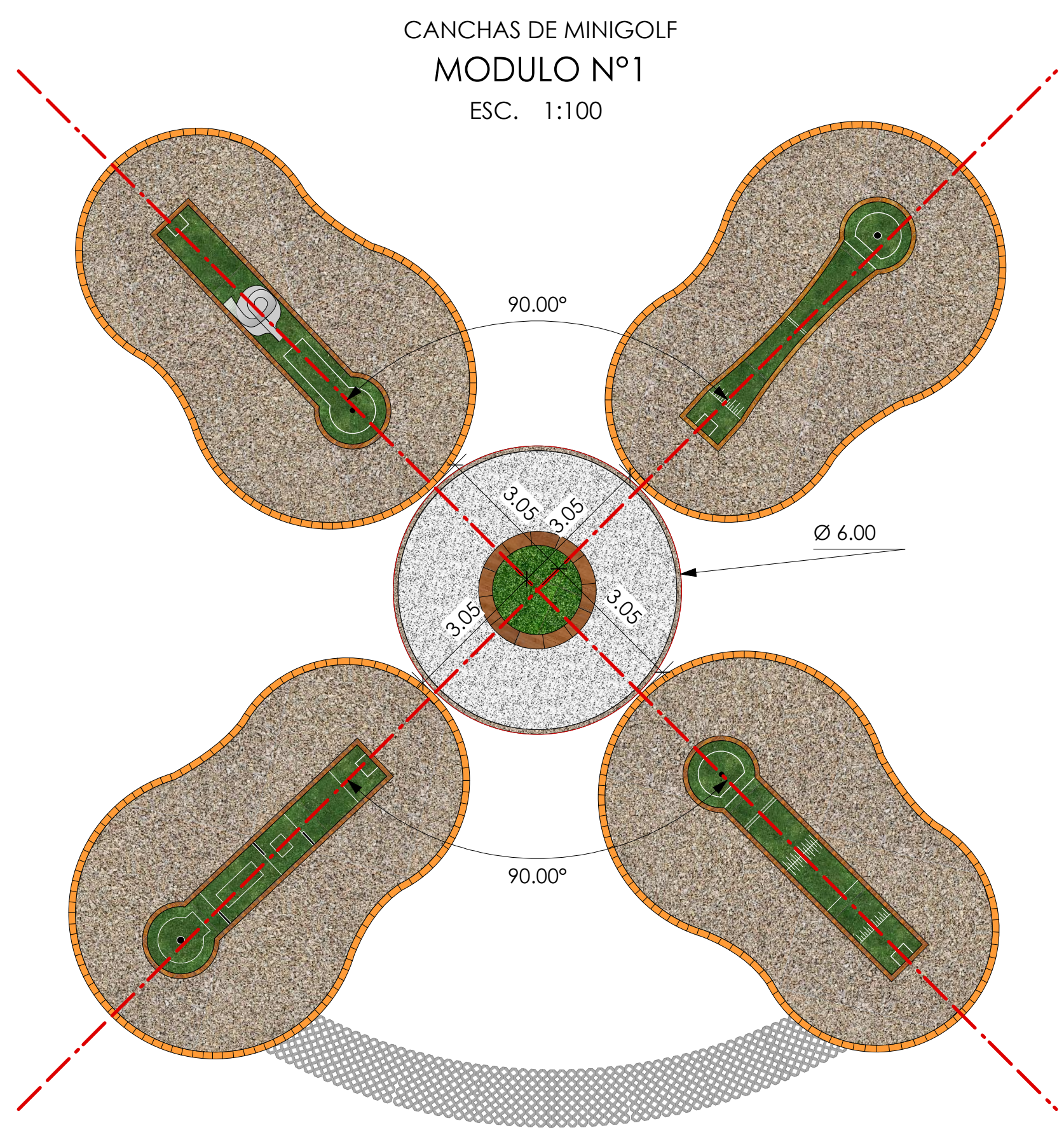


PLANTA AMOBLADA  
ESC: 1: 100

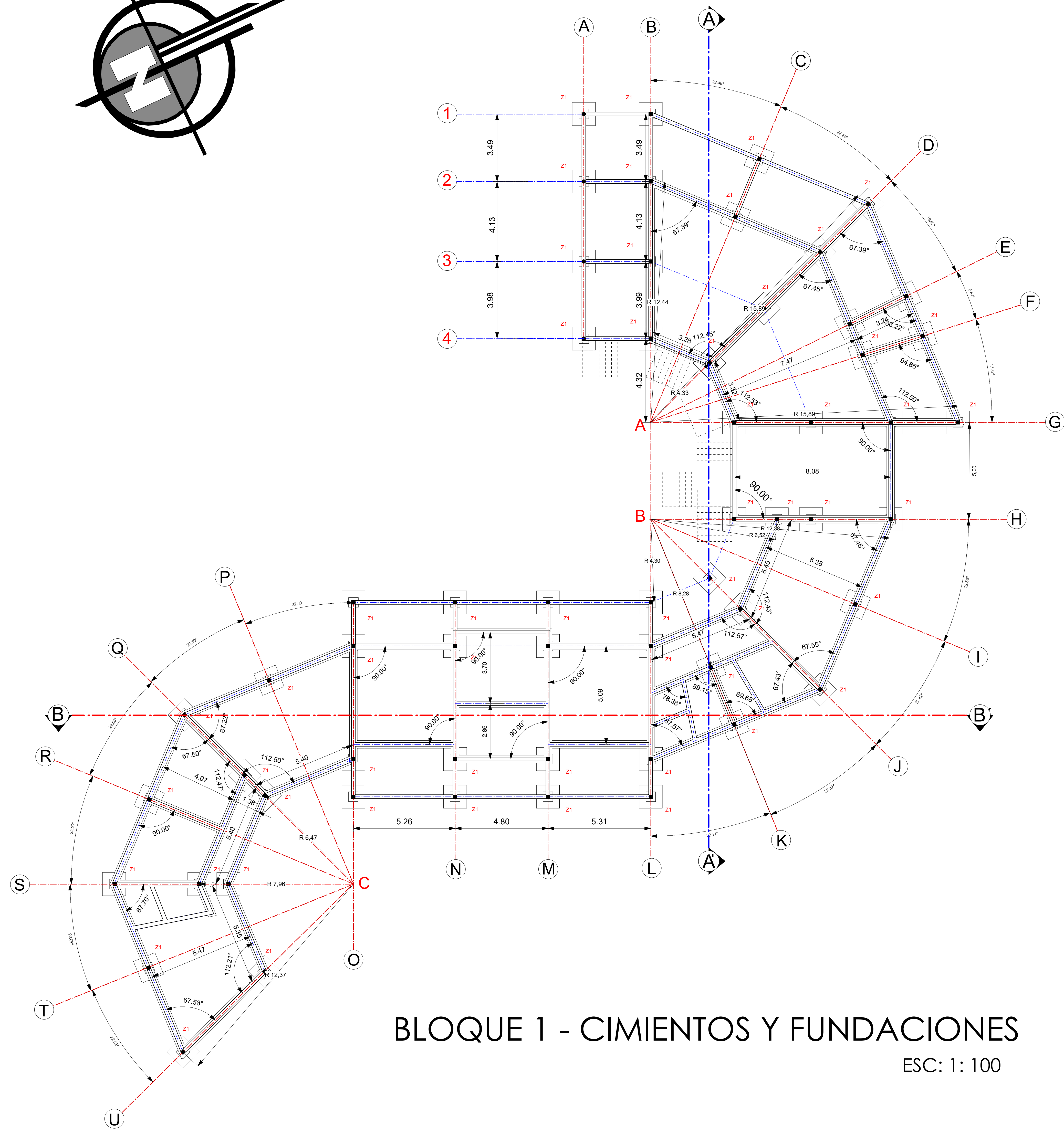
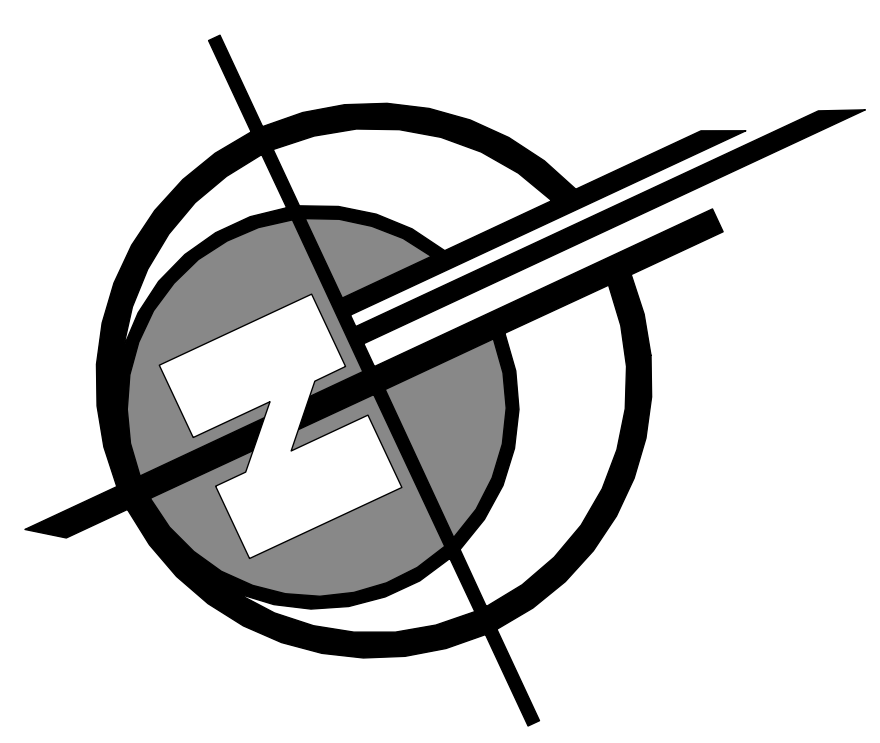


PLANTA ACOTADA  
ESC: 1: 100

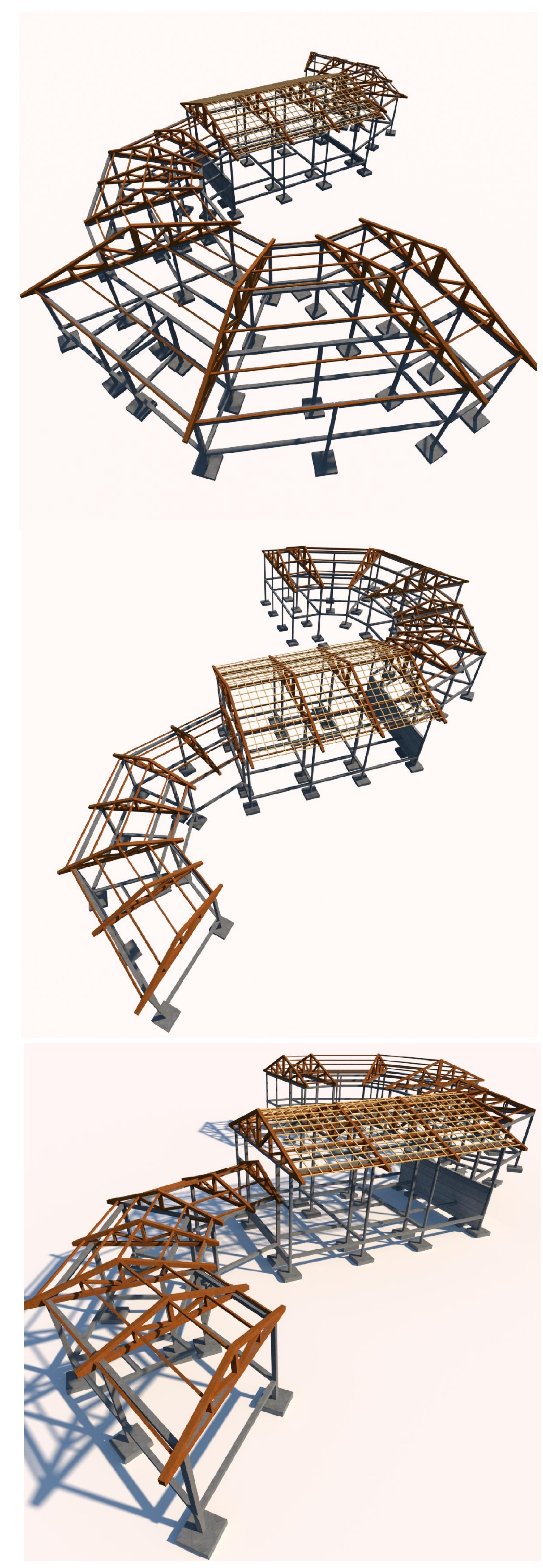


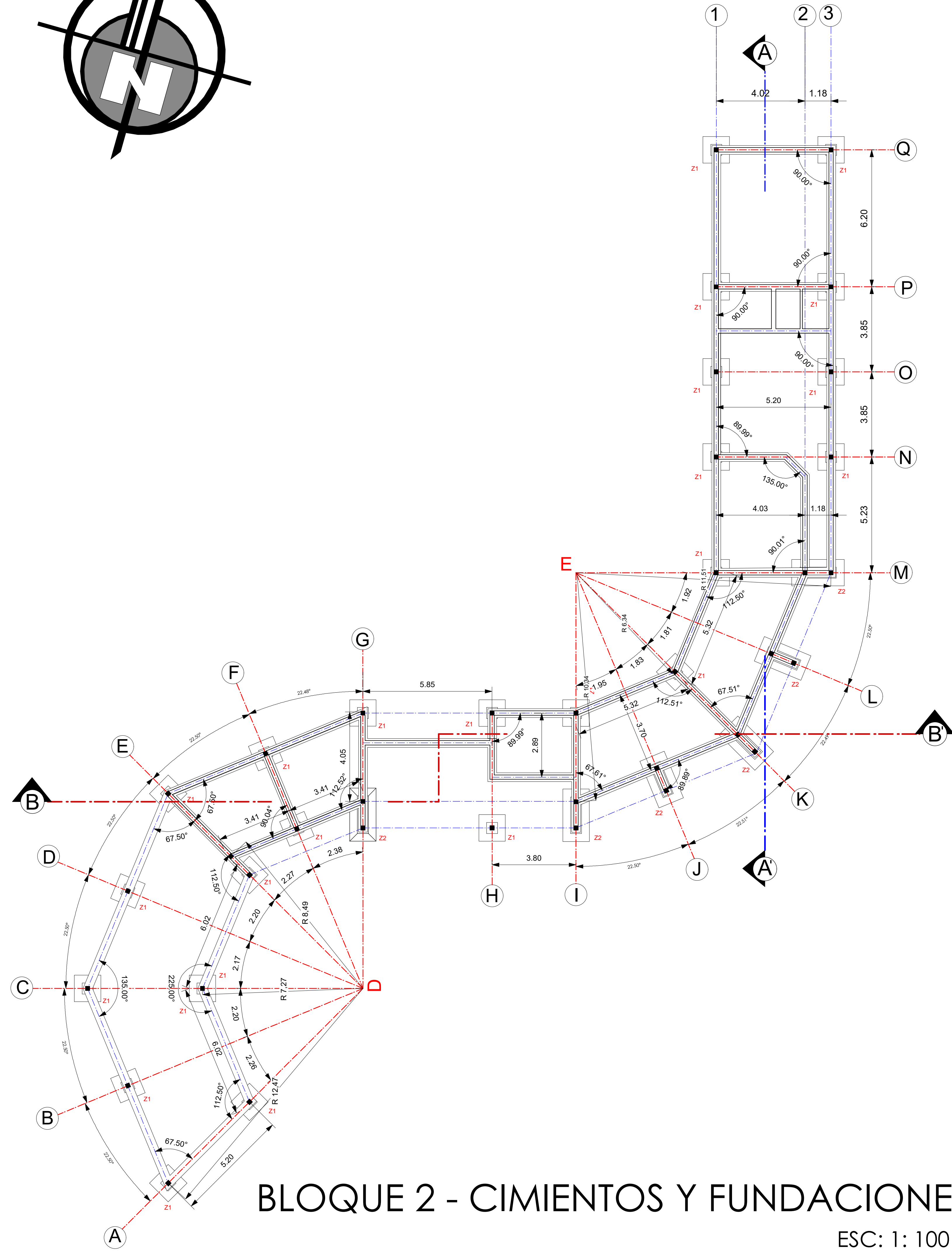
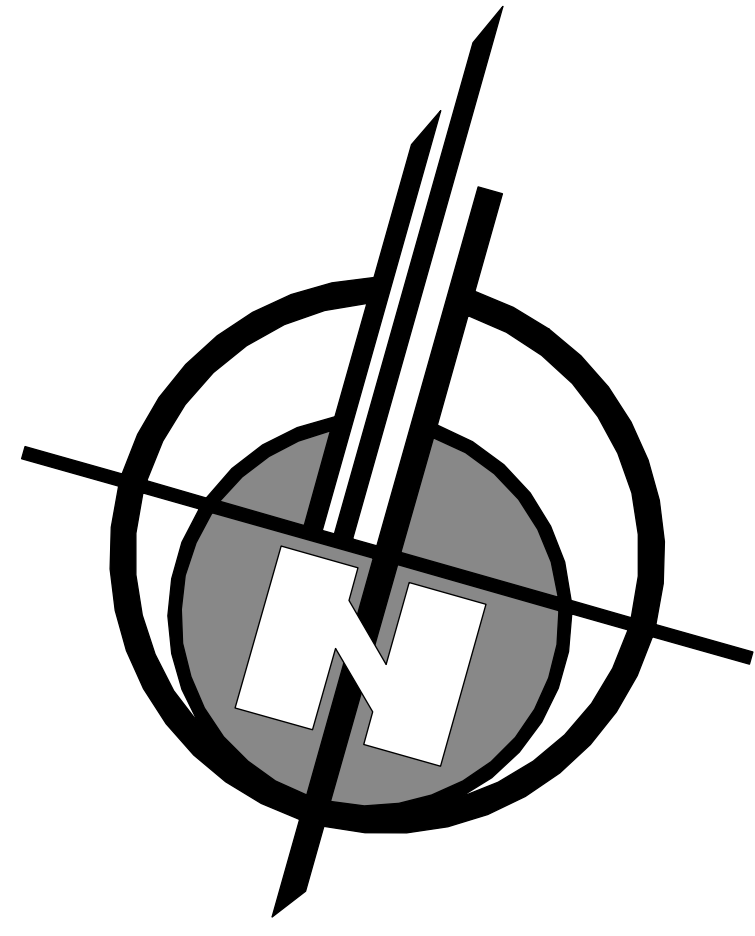


	ESCALA 1:100	ESCALA 1:100	ESCALA 1:50	ESCALA 1:50	ESCALA 1:100
<b>PLANTA</b>					
<b>FACHADA / SECCION</b>					
<b>FACHADA</b>					



BLOQUE 1 - CIMIENTOS Y FUNDACIONES  
ESC: 1: 100





BLOQUE 2 - CIMIENTOS Y FUNDACIONES  
ESC: 1: 100

