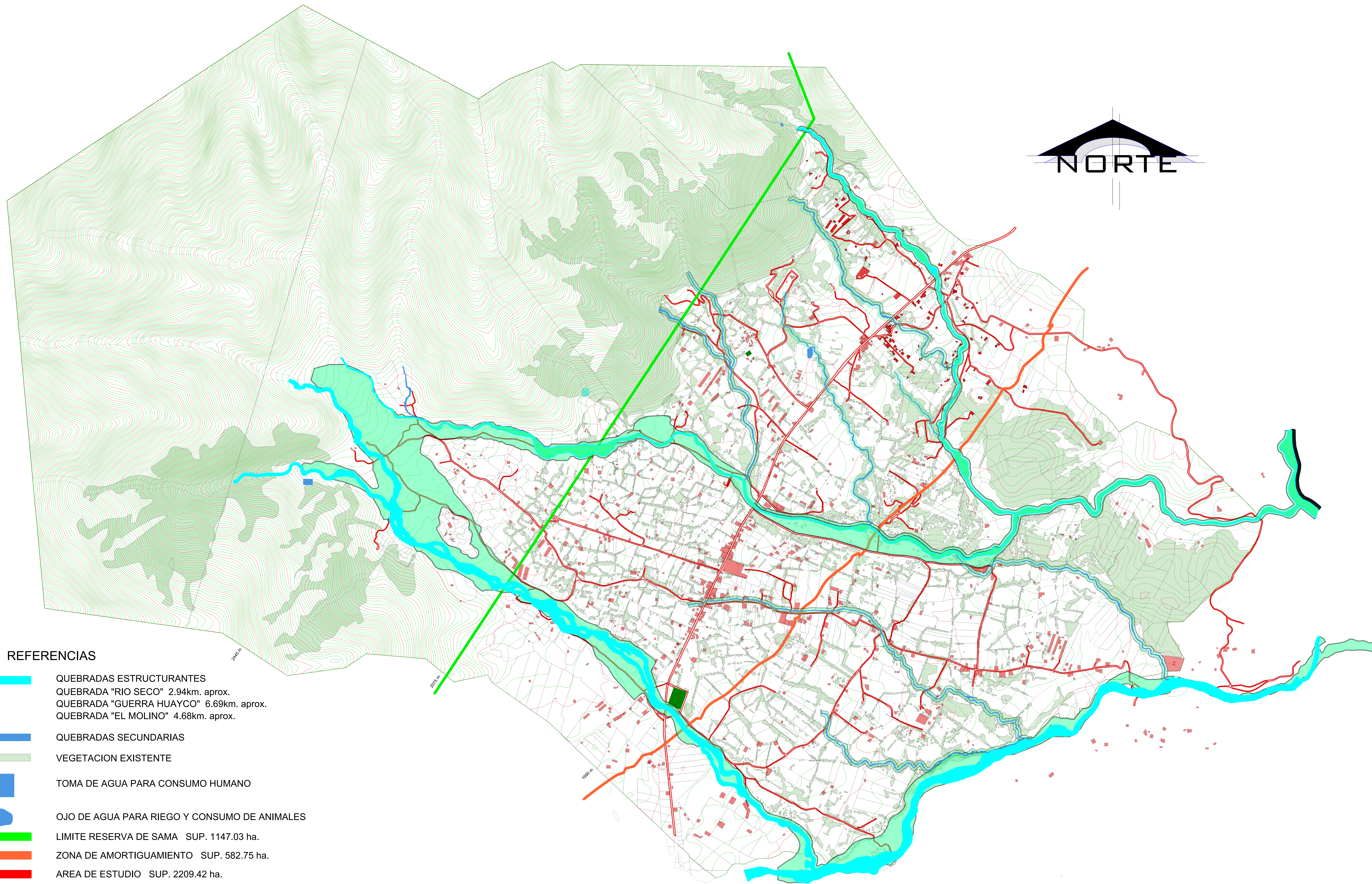










REFERENCIAS

- LIMITE RESERVA DE SAMA SUP. 1147.03 ha.
- ZONA DE AMORTIGUAMIENTO SUP. 582.75 ha.
- AREA DE ESTUDIO SUP. 2209.42 ha.
- QUEBRADAS ESTRUCTURANTES
- QUEBRADAS SECUNDARIAS
- PLAYA DE QUEBRADAS
- VEGETACION EXISTENTE
- VIVIENDAS
- PARCELAS
- RECREACION ACTIVA
- TIERRAS DE USO COLECTIVO
- CARRETERA PRINCIPAL (VIA SAN ANDRES)
- CAMINOS VECINALES



REFERENCIAS

-  QUEBRADAS ESTRUCTURANTES
 QUEBRADA "RIO SECO" 2.94km. aprox.
 QUEBRADA "GUERRA HUAYCO" 6.69km. aprox.
 QUEBRADA "EL MOLINO" 4.68km. aprox.
-  QUEBRADAS SECUNDARIAS
-  VEGETACION EXISTENTE
-  TOMA DE AGUA PARA CONSUMO HUMANO
-  OJO DE AGUA PARA RIEGO Y CONSUMO DE ANIMALES
-  LIMITE RESERVA DE SAMA SUP. 1147.03 ha.
-  ZONA DE AMORTIGUAMIENTO SUP. 582.75 ha.
-  AREA DE ESTUDIO SUP. 2209.42 ha.