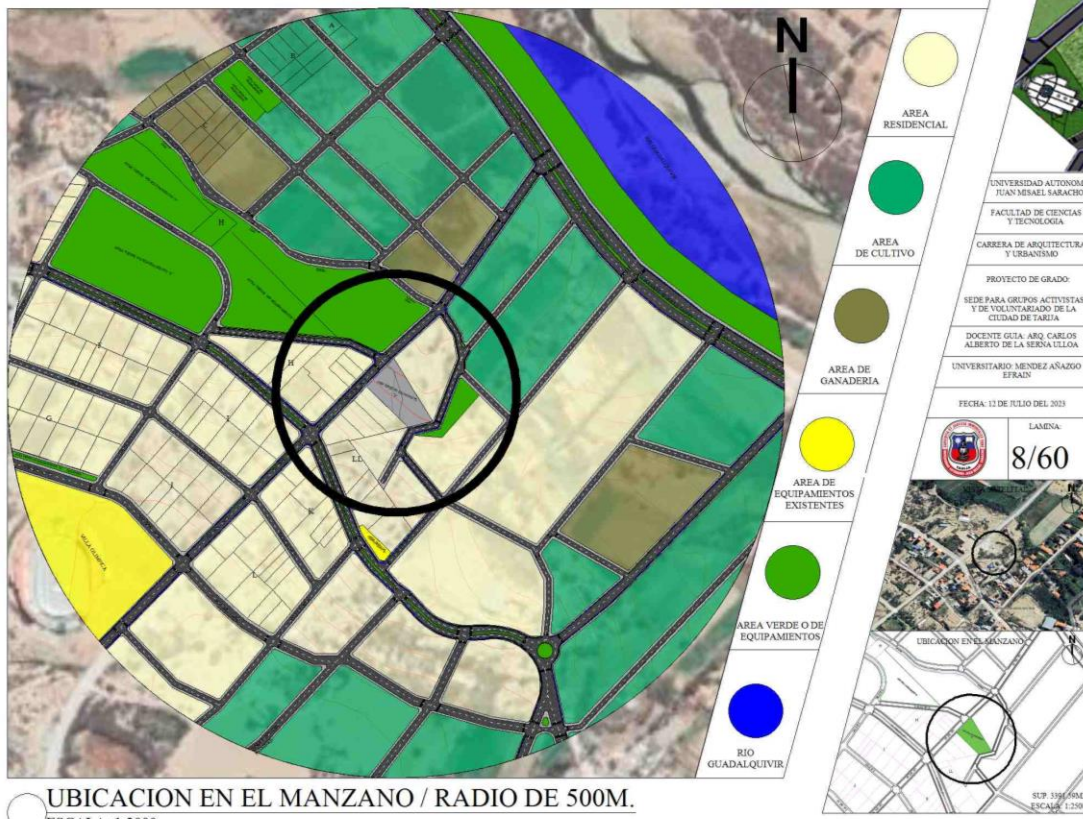
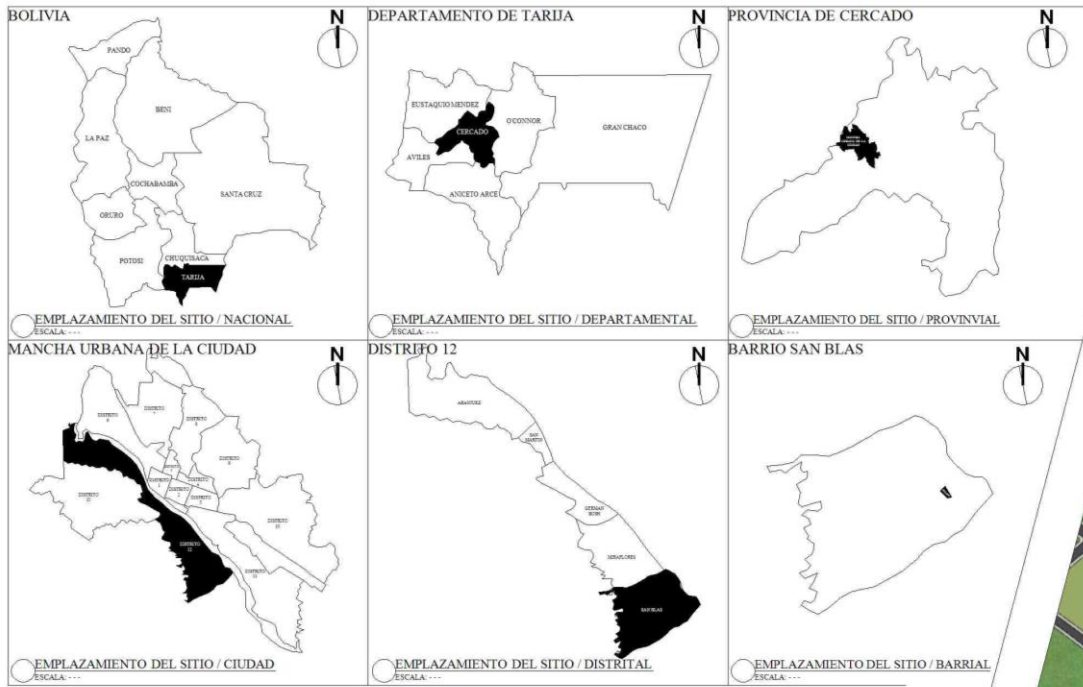


# ANEXOS (PRESENTACIÓN GRÁFICA)







**CRITERIOS DE COMPOSICION**

- 1. Mano humana
- 2. Línea curva
- 3. Bloque curvo
- 4. Bloque con líneas rectas
- 5. Bloque con líneas rectas y curvas
- 6. Bloque con líneas rectas y curvas
- 7. Bloque con líneas rectas y curvas

**CUBIERTA CON PENDIENTES CURVOS PARA MAYOR FACILIDAD DE ESCORRENTA DE AGUAS DE LLUVIA**

**DIRECCION DE VENTILAS PARA MAYOR FACILIDAD DE VENTILACION NATURAL DE AMBIENTES Y VISTAS ATRACTIVAS HACIA TODO EL ENTORNO DENTRO DEL BLOQUE**

**MORFOLOGIA ADAPTADA AL TERRENO TOPOGRAFICO EN PENDIENTE**

**JUSTIFICACION DE LA FORMA**

ESCALA: ...

**REFERENCIAS Y/O ILUSTRACIONES GRAFICAS DEL PLANO**

**AREA VERDE Y/O EQUIPAMIENTO "D"**

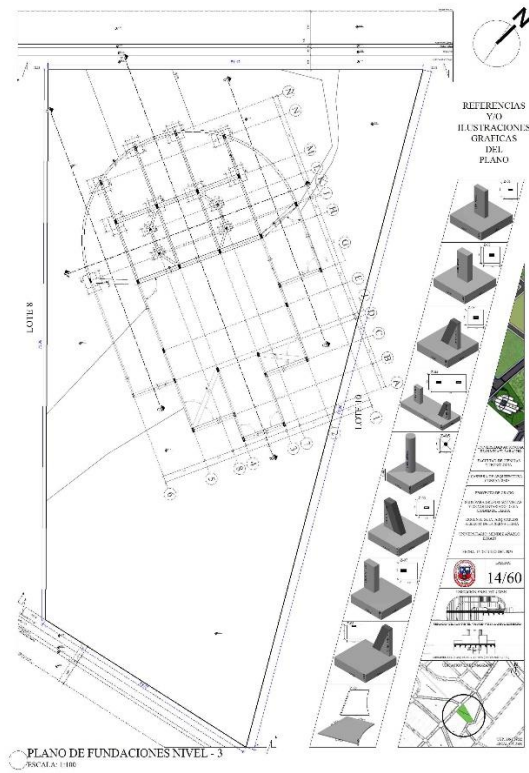
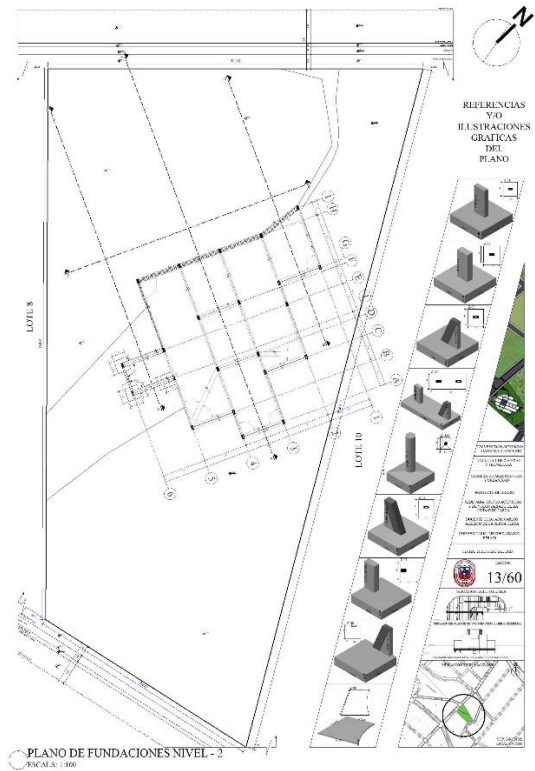
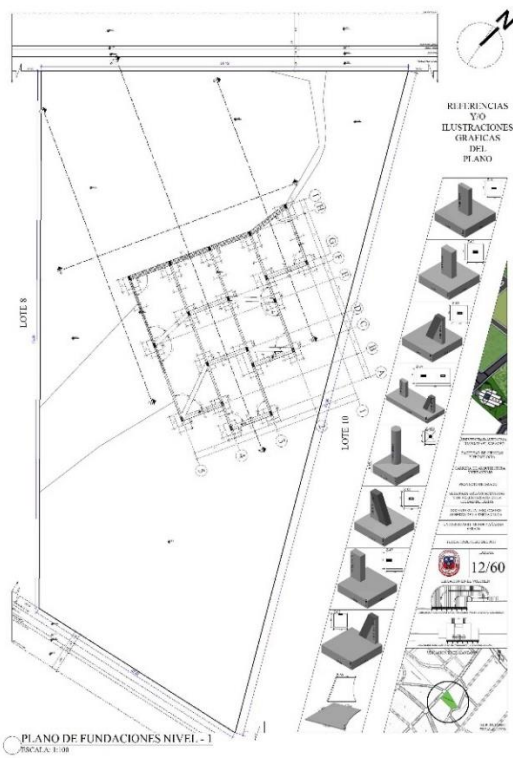
**SUP. 3391.59M2**

**LOTES 8, 9, 10**

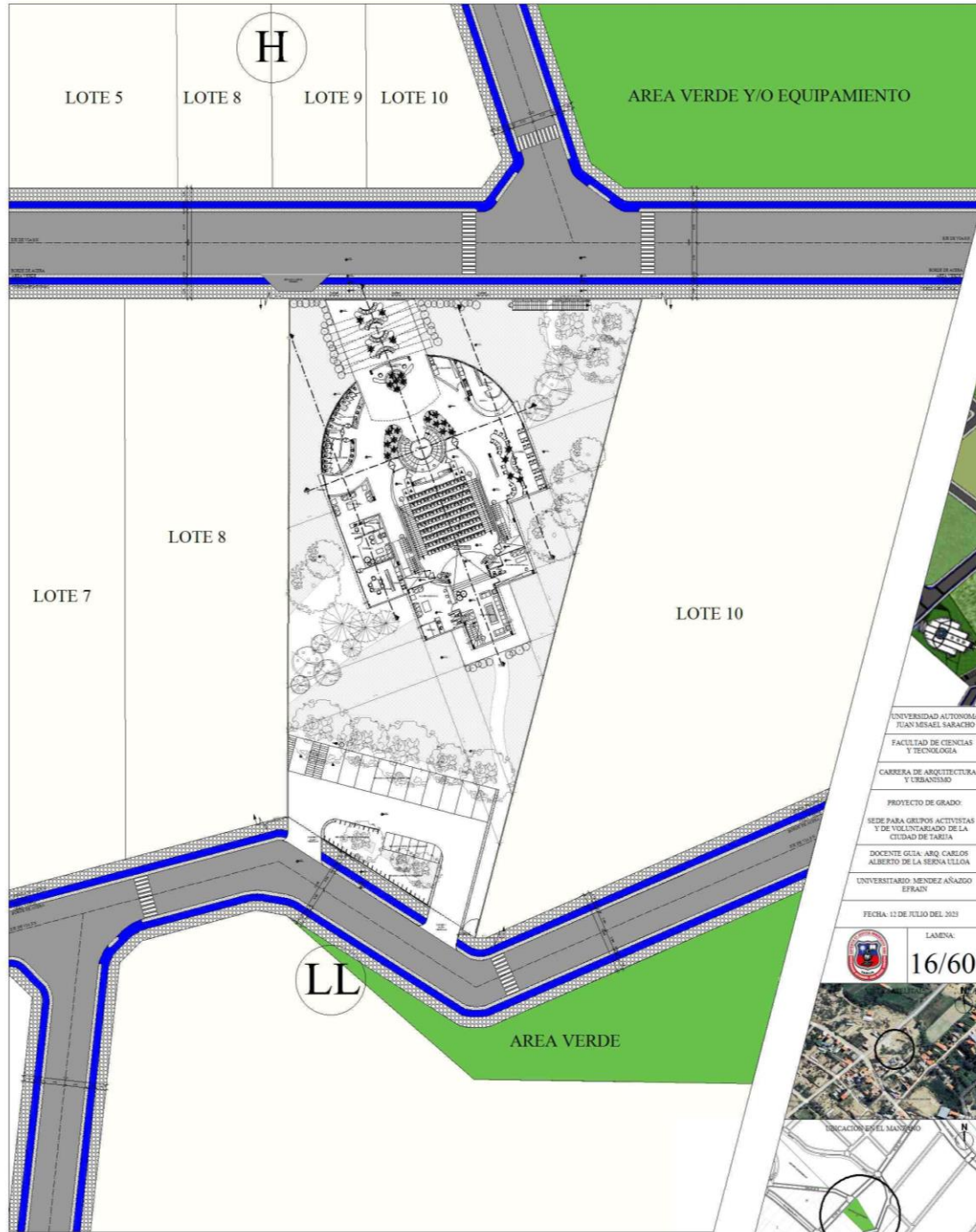
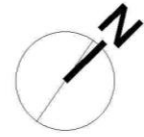
**ESCALA: 1:100**

**PLANO DE LOTE**

ESCALA: 1:100



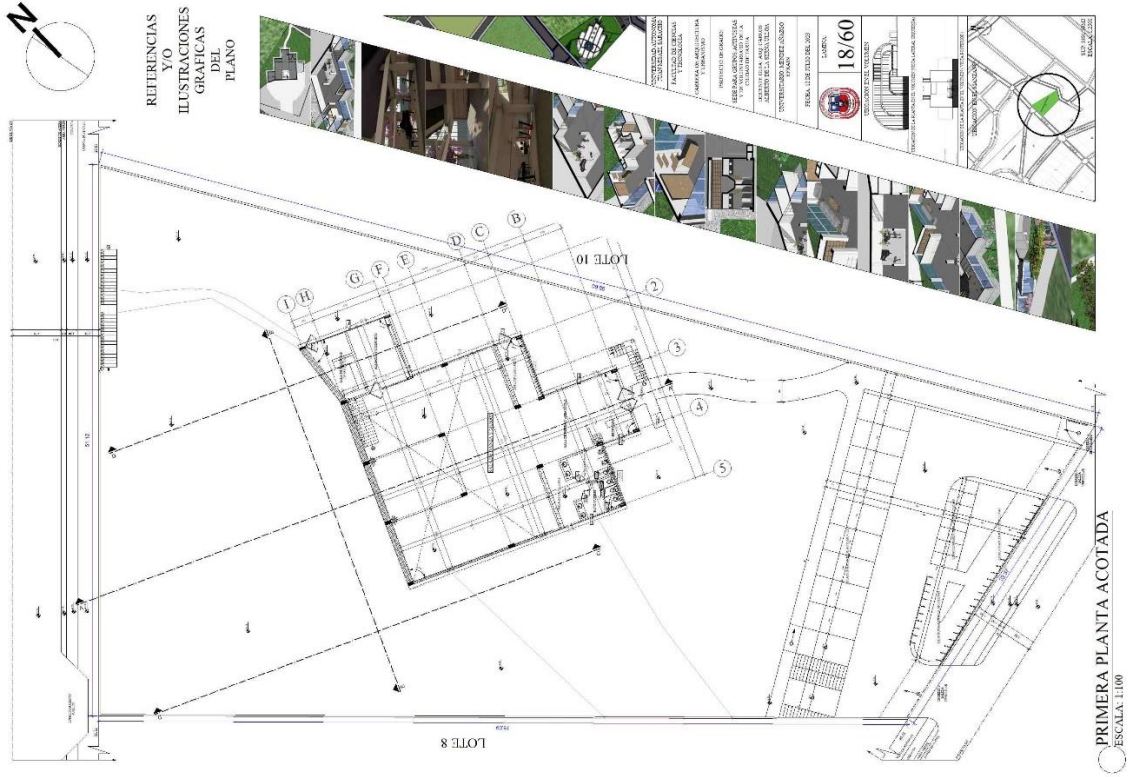




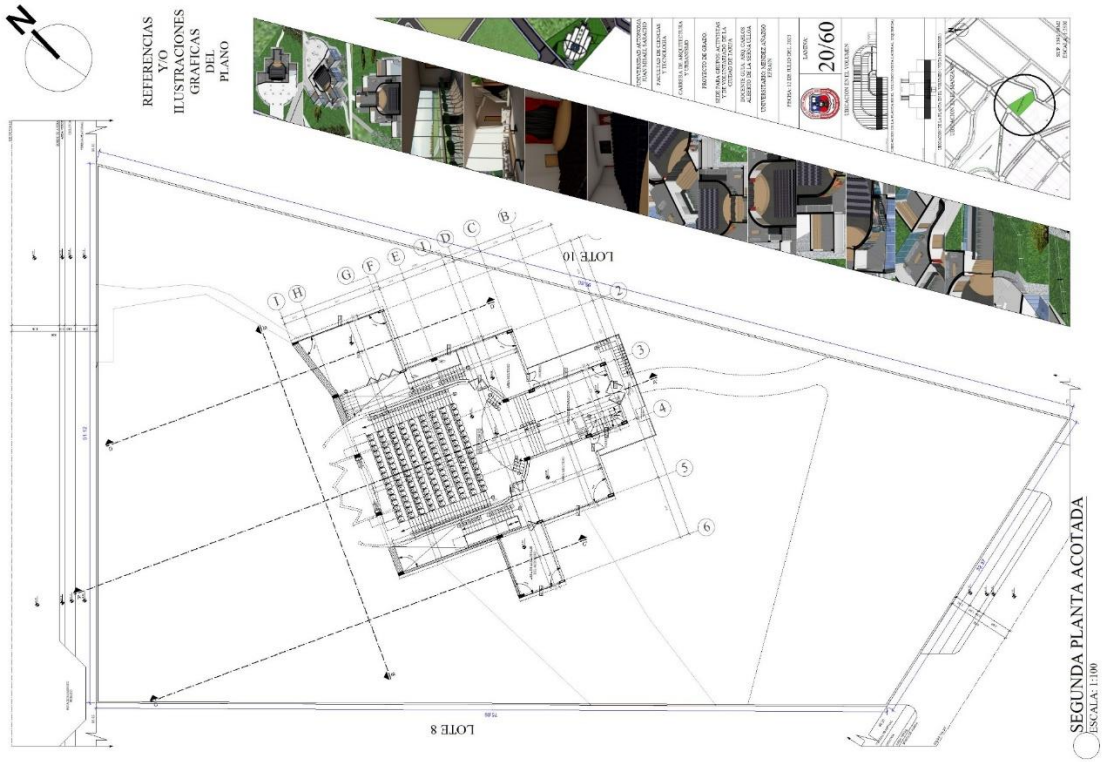
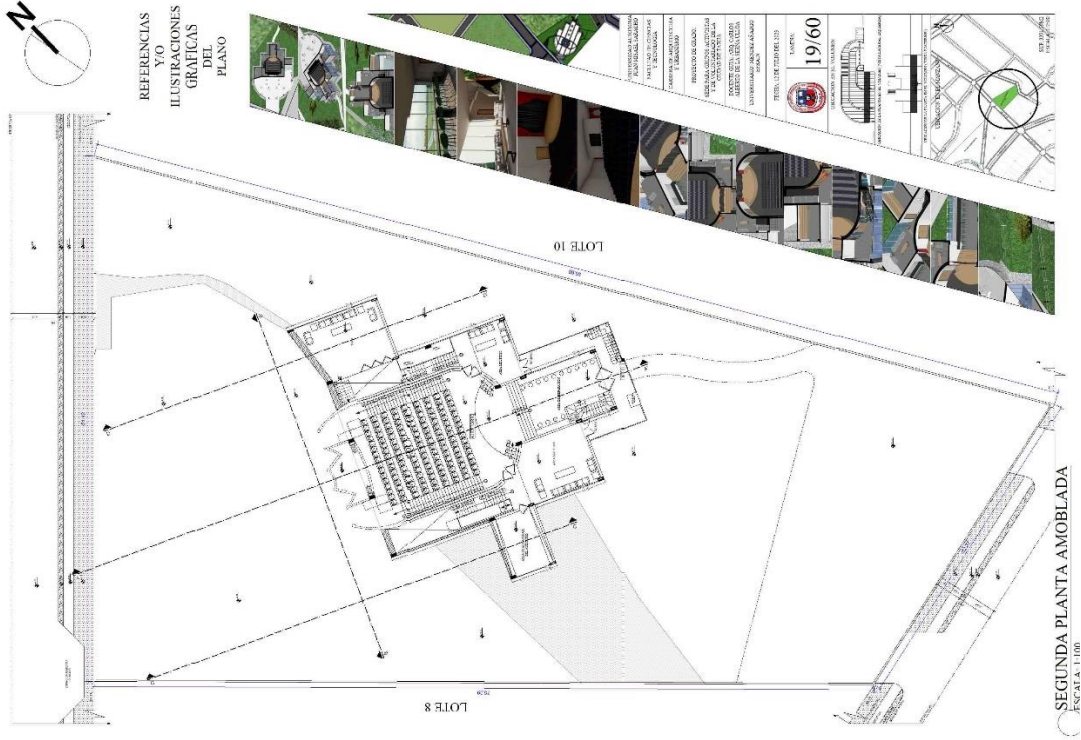
PLANIMETRIA GENERAL  
ESCALA: 1:200

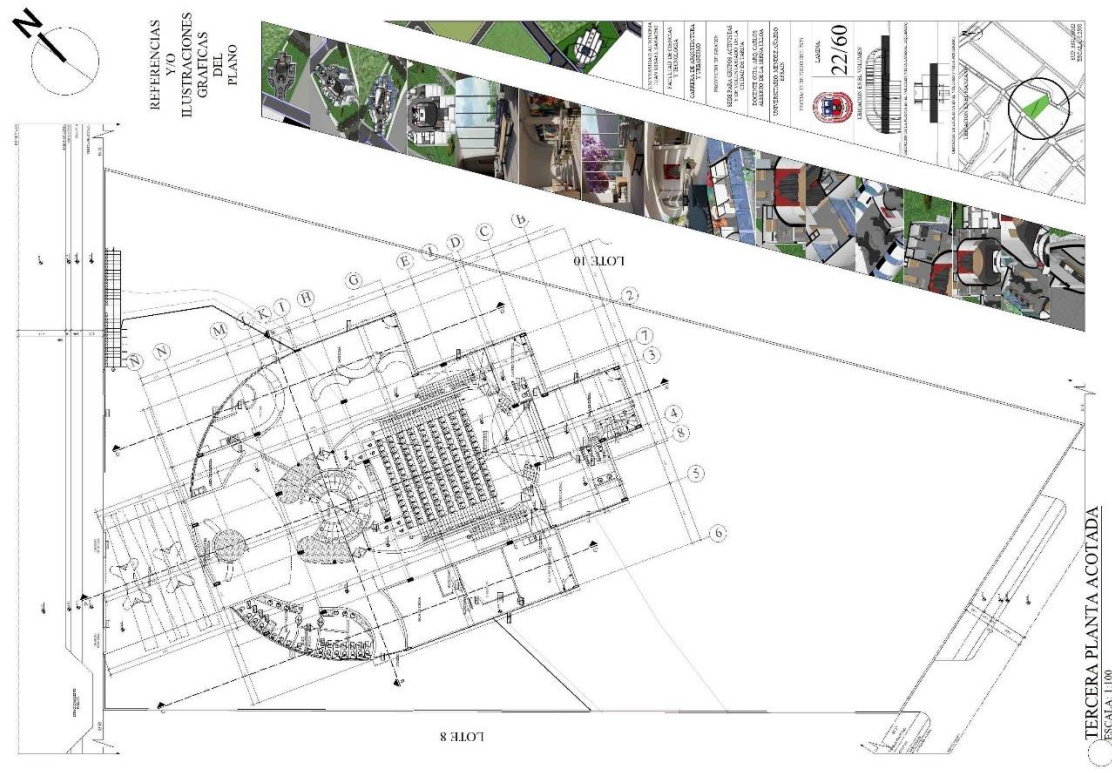
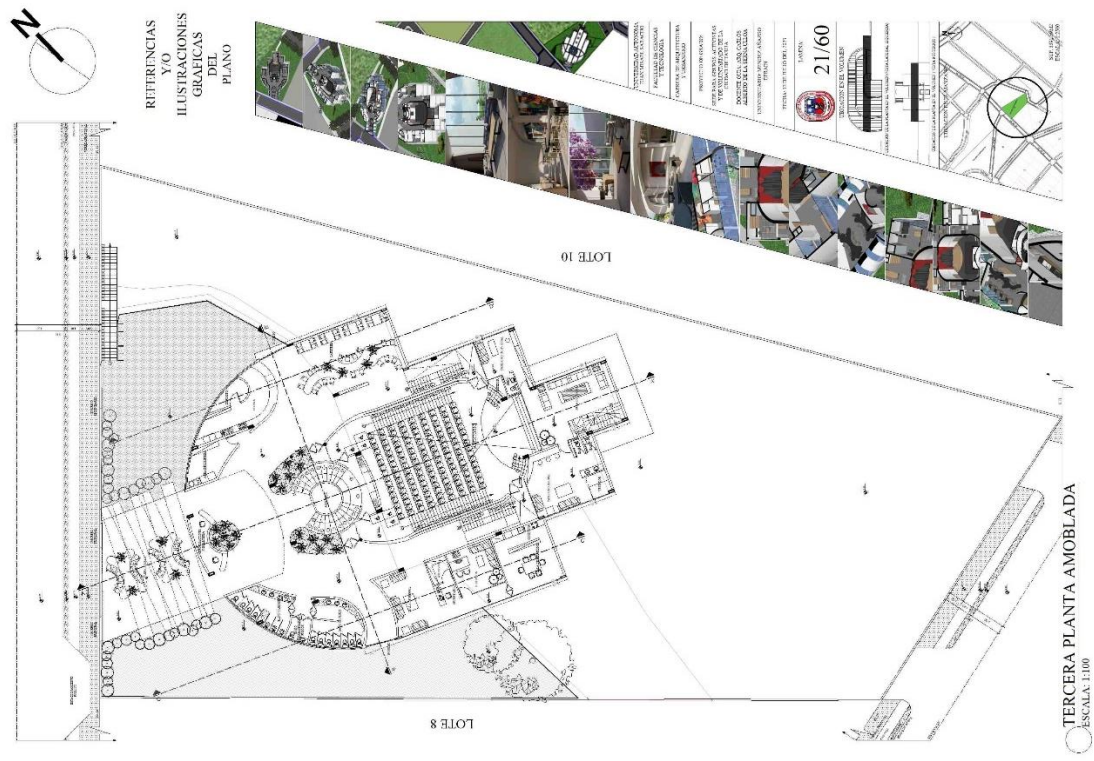
UNIVERSIDAD AUTONOMA  
JUAN MISAEL SARACHO  
FACULTAD DE CIENCIAS  
Y TECNOLOGIA  
CARRERA DE ARQUITECTURA  
Y URBANISMO  
PROYECTO DE GRADO:  
SEDE PARA GRUPOS ACTIVISTAS  
Y DE VOLUNTARIADO DE LA  
CIUDAD DE TARIJA  
DOCENTE GUÍA: ARQ. CARLOS  
ALBERTO DE LA REINA ULLGA  
UNIVERSITARIO: MENDEZ AÑAZO  
EFRAÍN  
FECHA: 11 DE JULIO DEL 2023  
LÁMINA:  
16/60













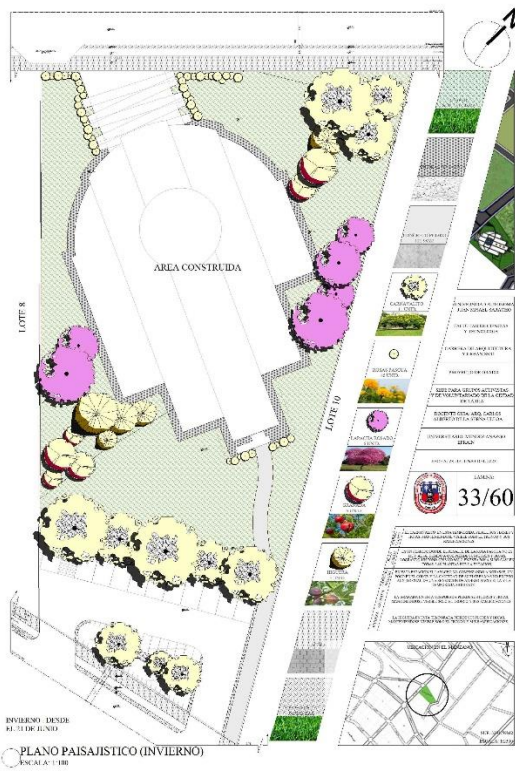
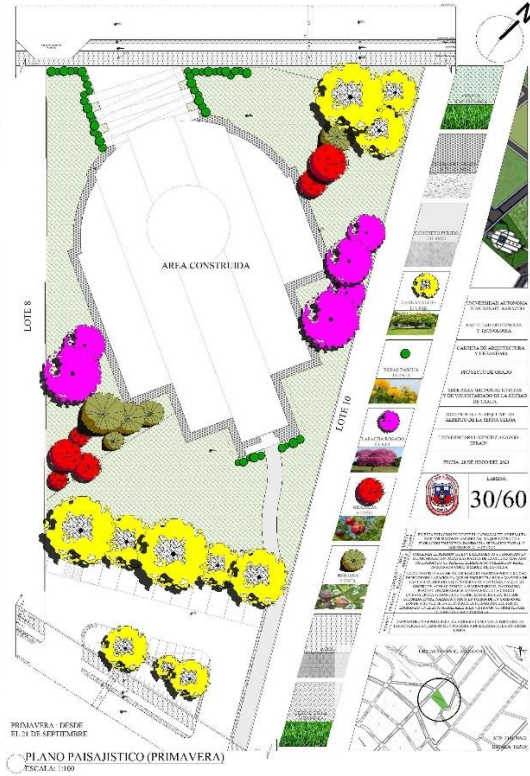
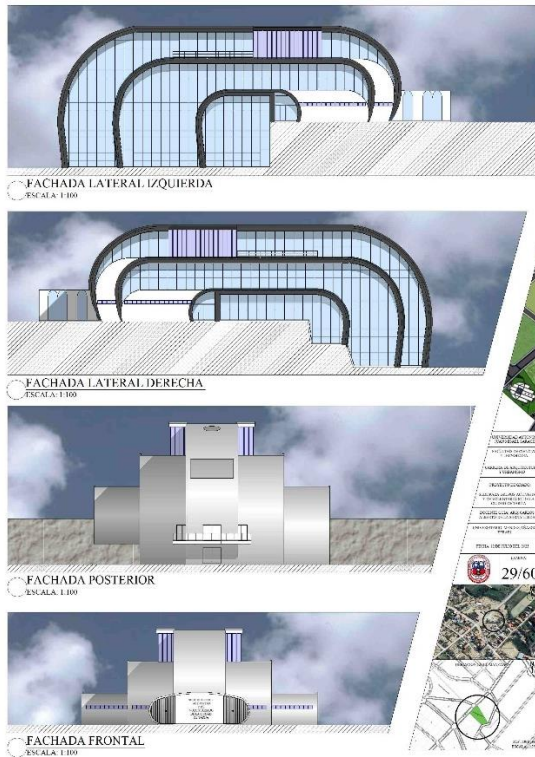




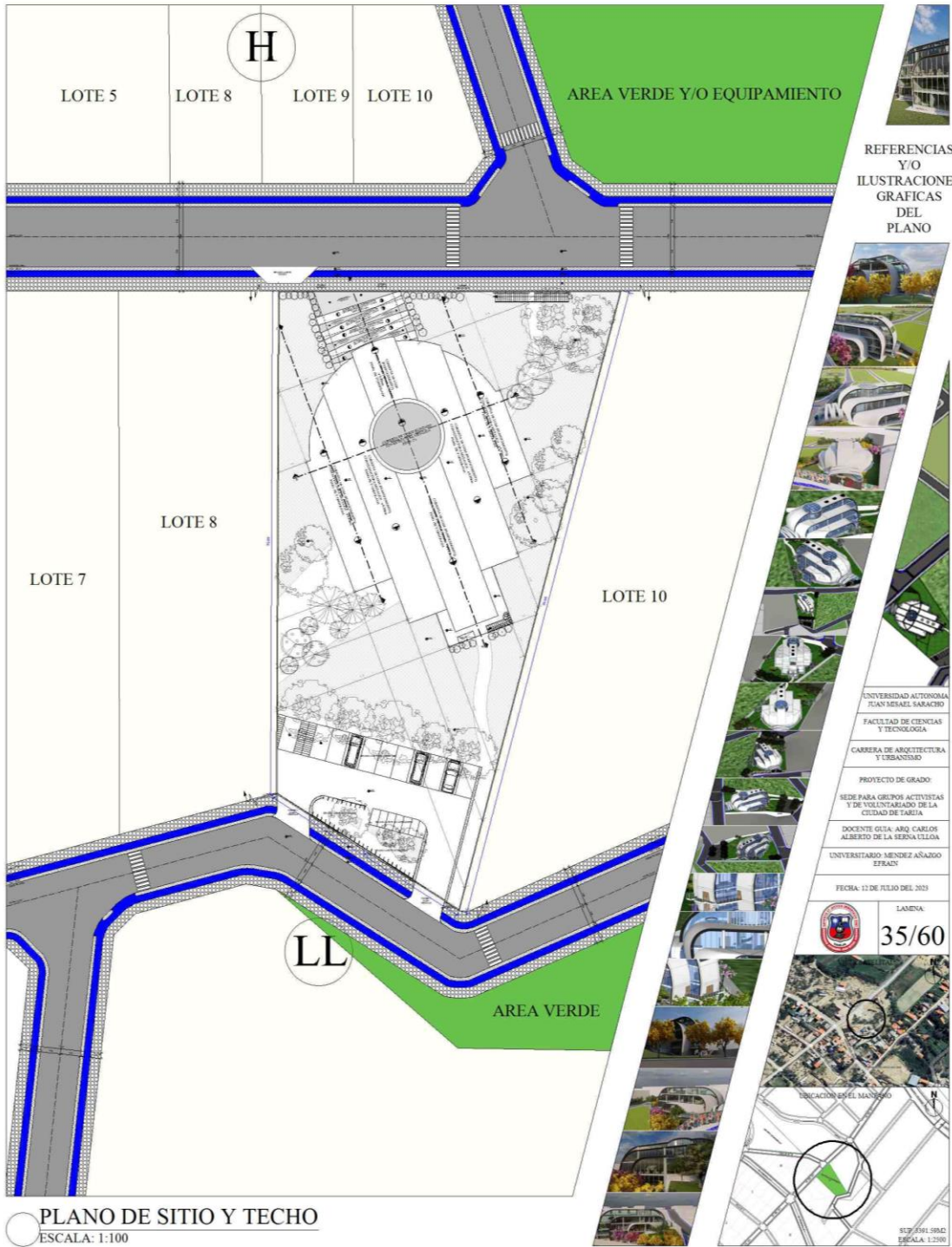
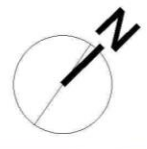


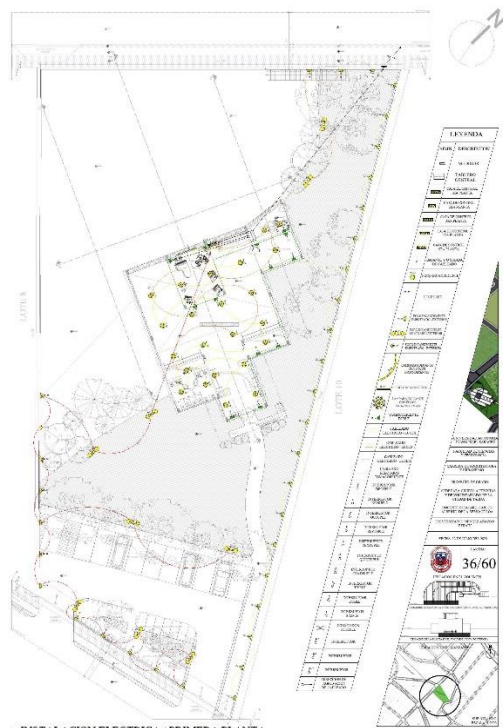




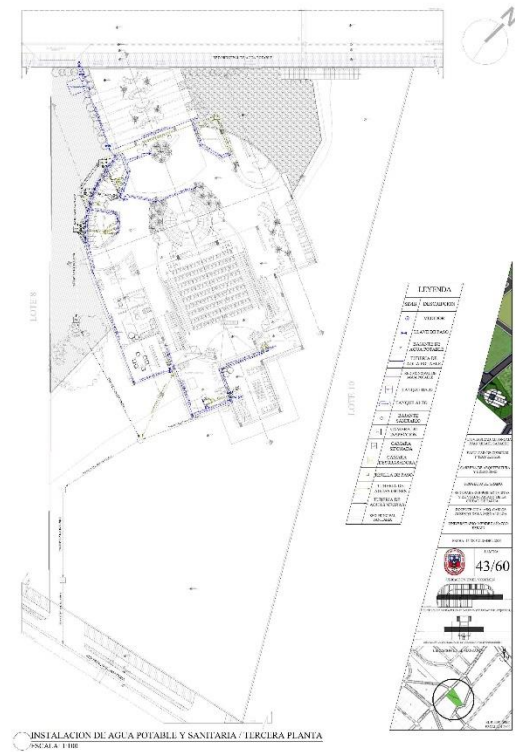
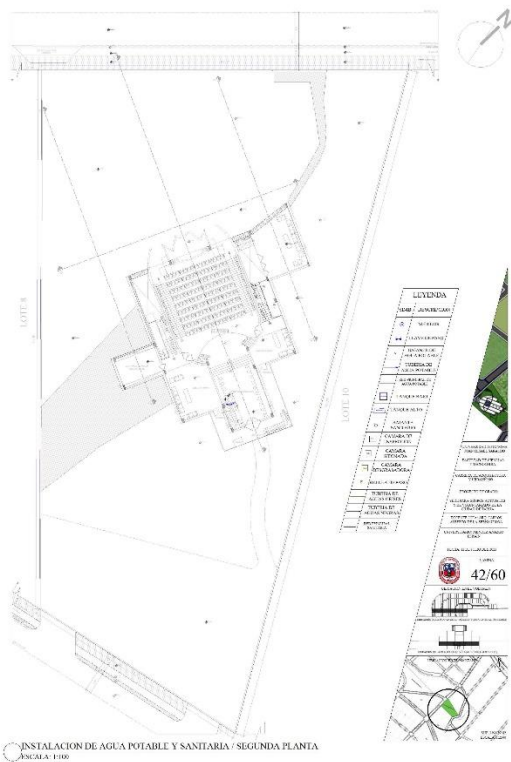
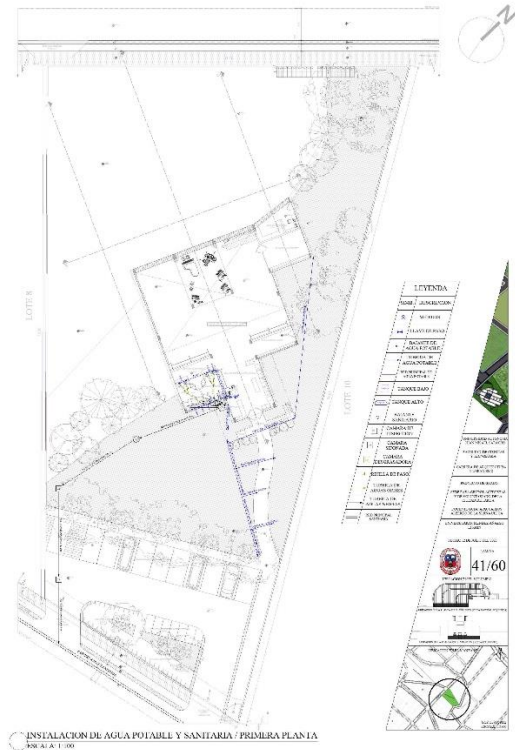


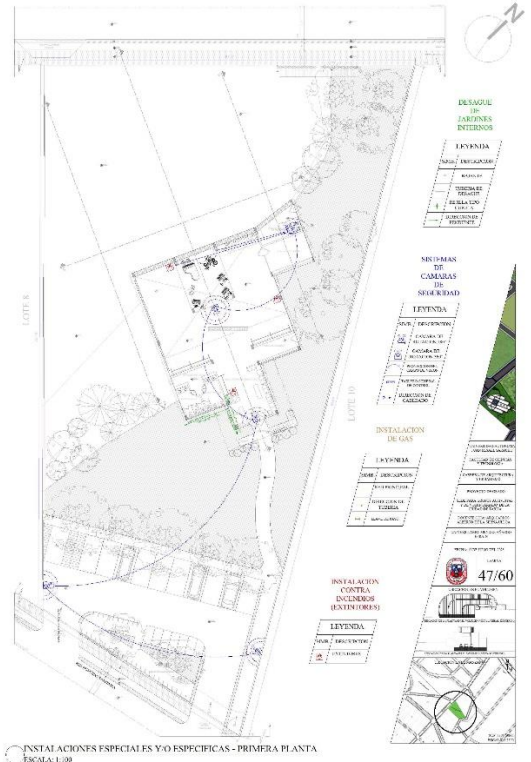
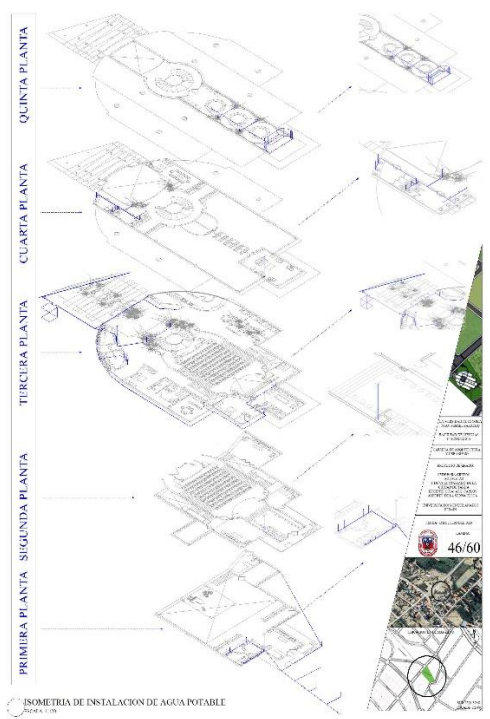
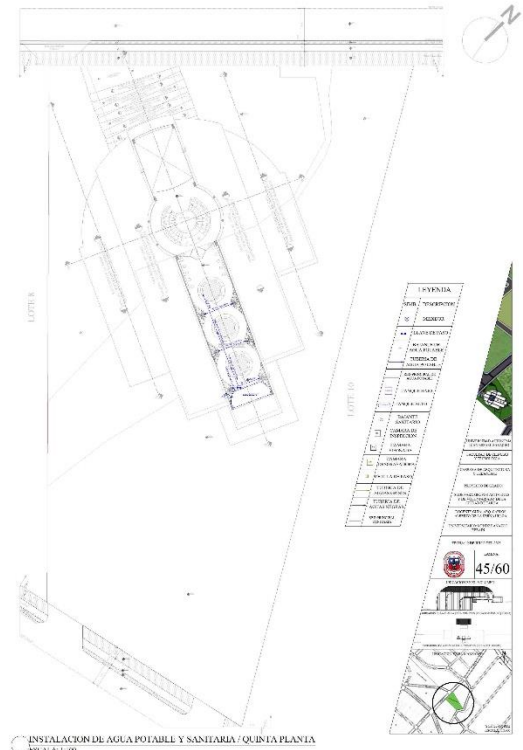
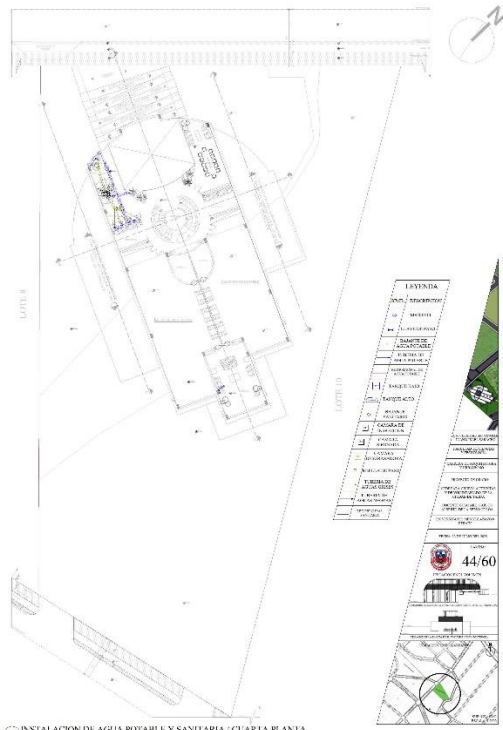




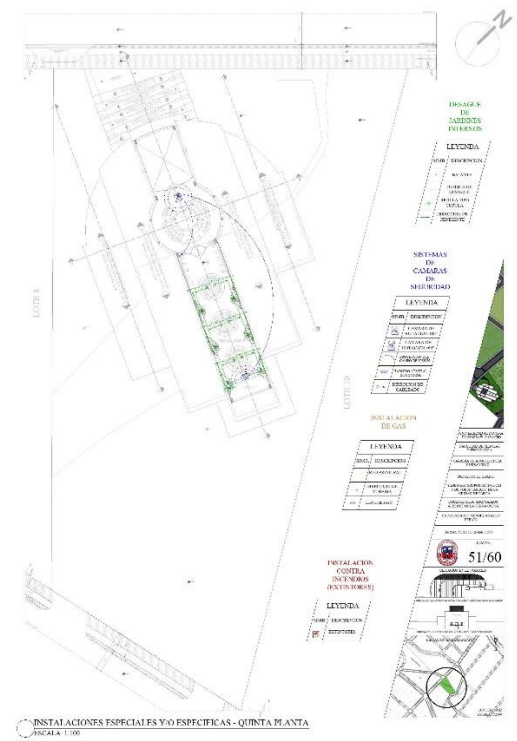
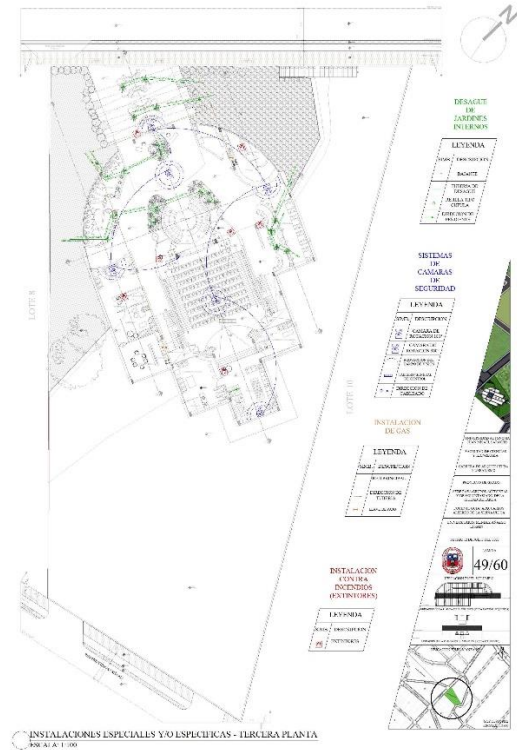
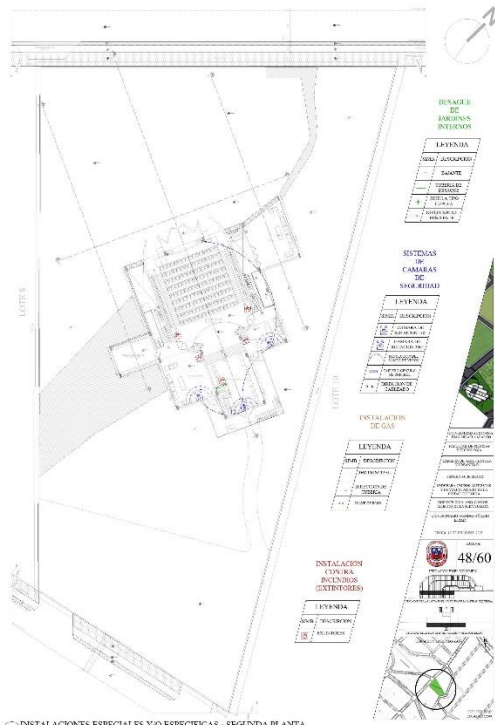


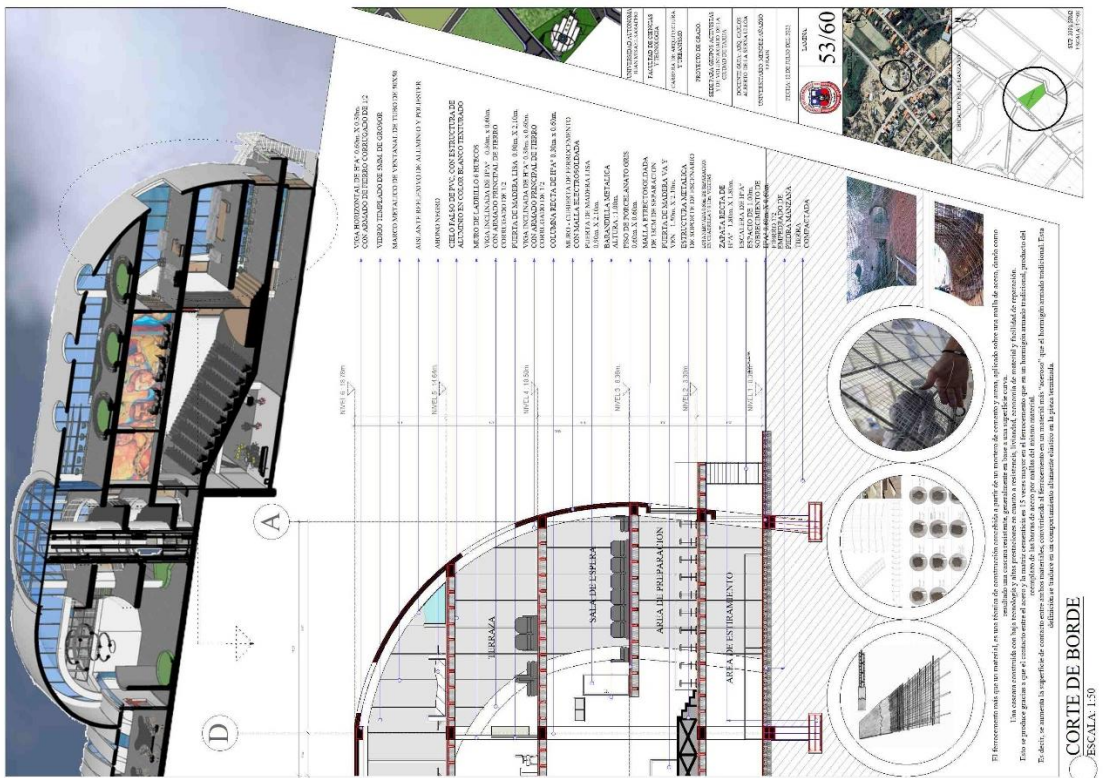
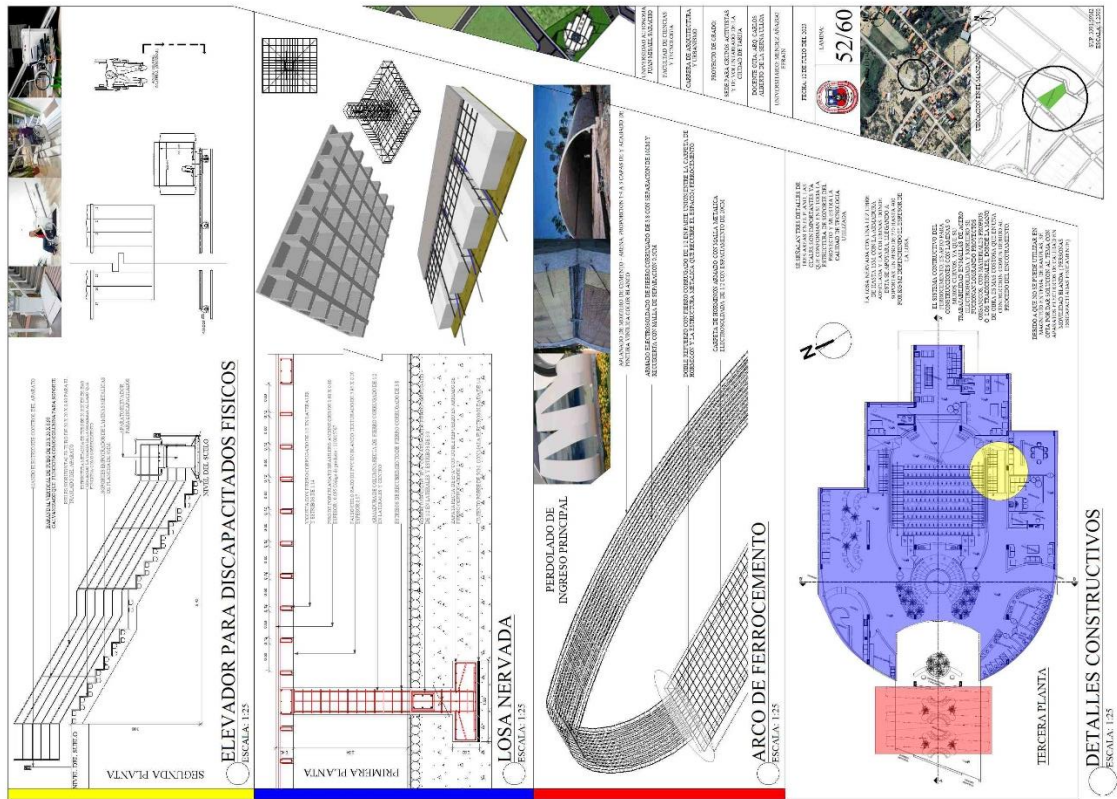
















**PERSPECTIVAS URBANAS**  
 ESCALA: ---

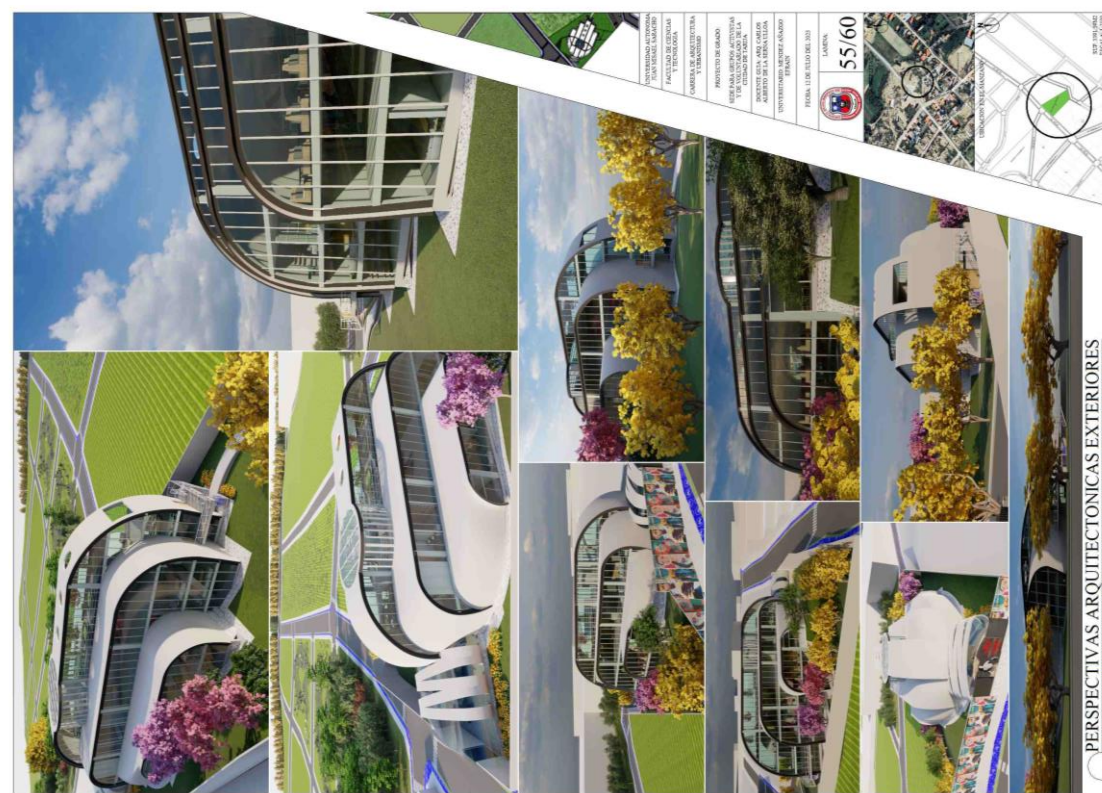
UNIVERSIDAD AUTÓNOMA  
 JUAN MESAEL VAQUERO  
 FACULTAD DE CIENCIAS  
 Y TECNOLOGÍA  
 CARRERA DE ARQUITECTURA  
 Y URBANISMO  
 PROYECTO DE GRADO:  
 SEDE PARA GRUPOS ACTIVISTAS  
 Y DE VOLUNTARIADO DE LA  
 CIUDAD DE TAPIA  
 DOCENTE GUÍA: ARQ. CARLOS  
 ALBERTO DE LA SIENA CILLOA  
 UNIVERSITARIO: MENDEZ AÑAZO  
 EFRASIN  
 FECHA: 12 DE JULIO DEL 2023

LÁMINA:  
**54/60**

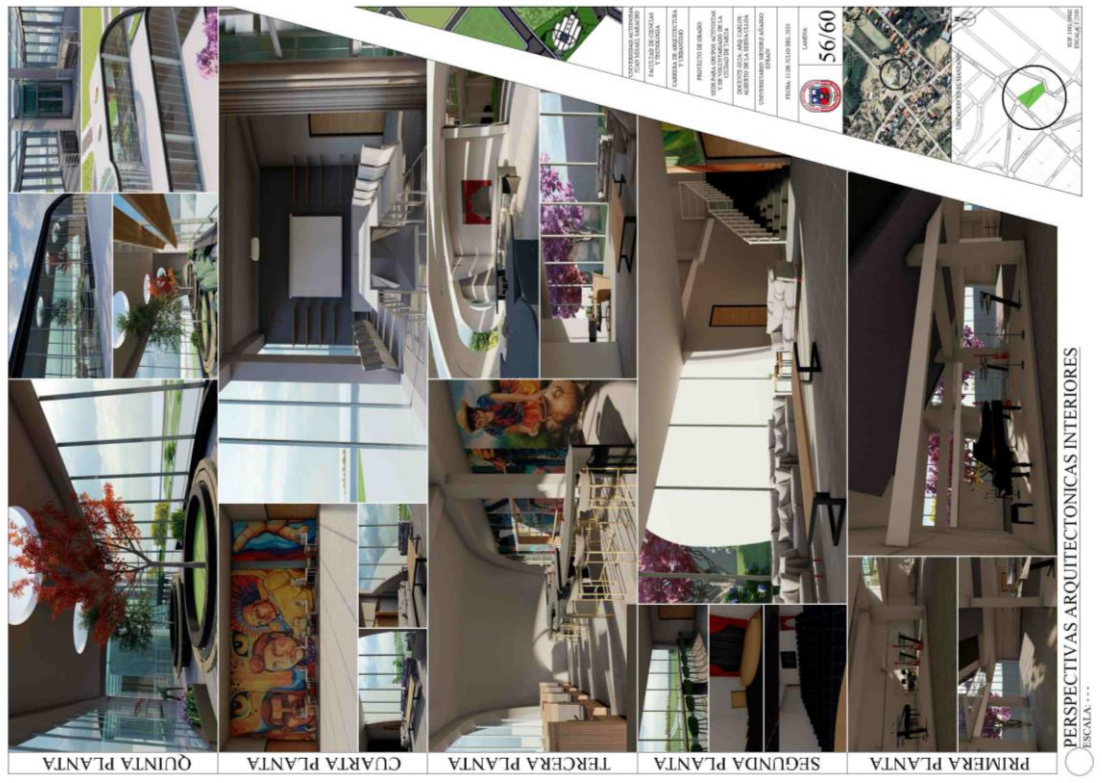


SIP 33915902  
 ESCALA: 1:2500





PERSPECTIVAS ARQUITECTONICAS EXTERIORES  
 ESCALA: ...



PERSPECTIVAS ARQUITECTONICAS INTERIORES  
 ESCALA: ...

PRIMERA PLANTA  
 SEGUNDA PLANTA  
 TERCERA PLANTA  
 CUARTA PLANTA  
 QUINTA PLANTA