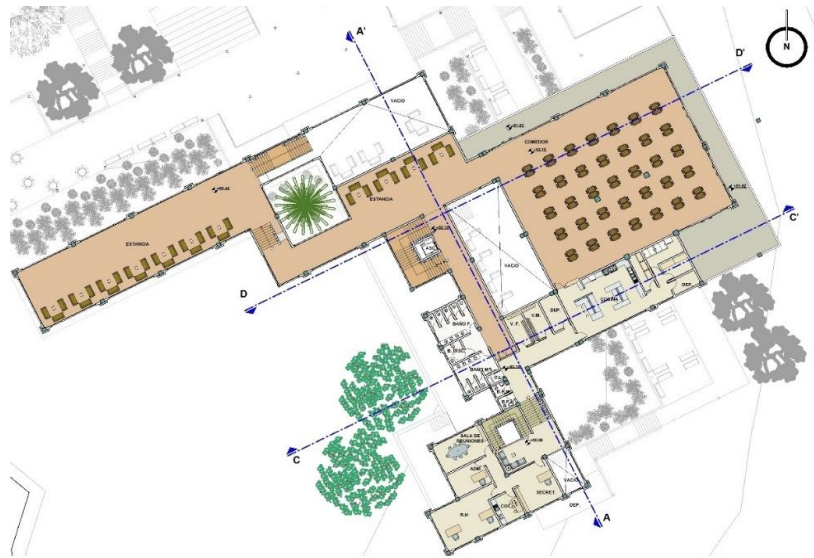




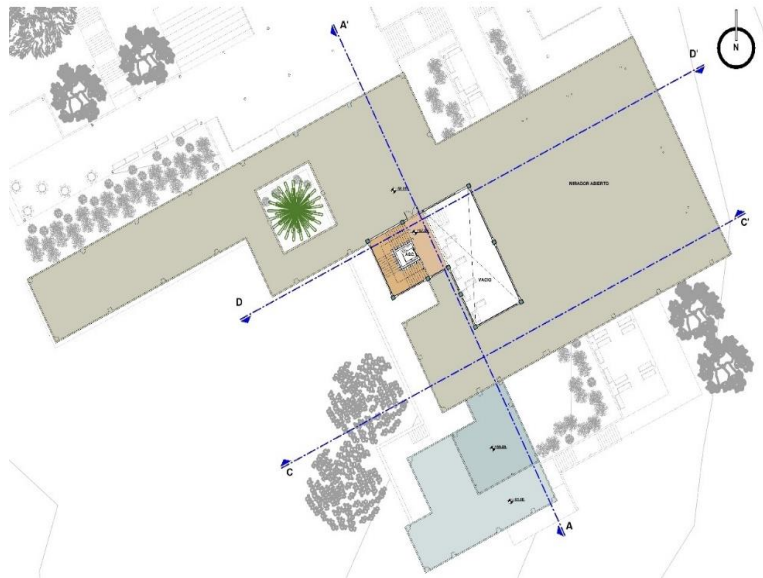
PLANIMETRIA



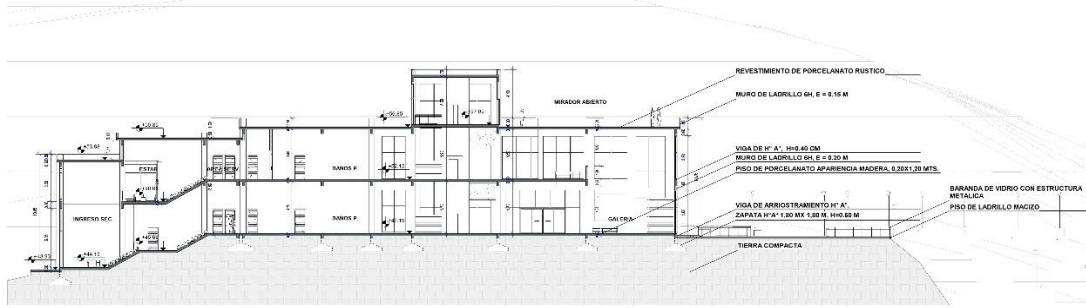
PLANTA BAJA



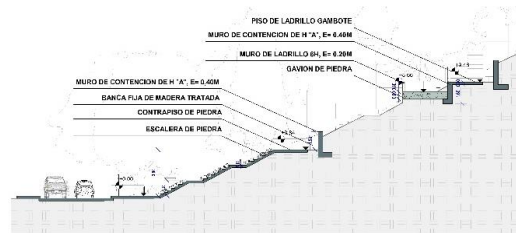
PRIMER NIVEL



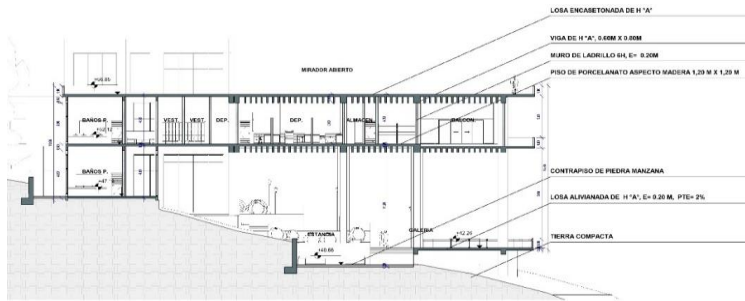
SEGUNDO NIVEL



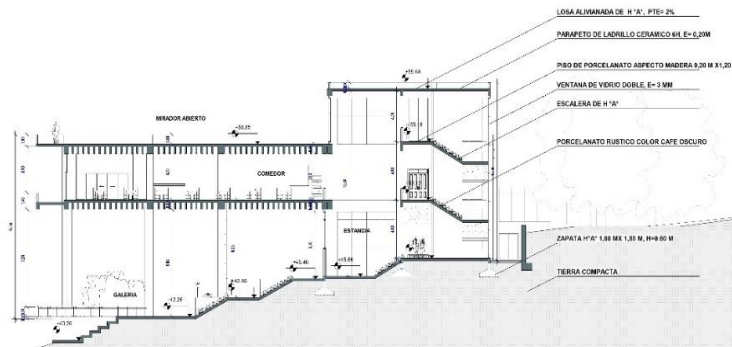
CORTE LONGITUDINAL A-A' / ESC. 1:100



CORTE TRANSVERSAL B-B' / ESC. 1:100



CORTE TRANSVERSAL C-C' / ESC. 1:100



CORTE TRANSVERSAL D-D' / ESC. 1:100

CORTES



FACHADA LATERAL ESTE / ESC. 1: 100



FACHADA FRONTAL NORTE / ESC. 1: 100



FACHADA POSTERIOR OESTE / ESC. 1: 100



FACHADA LATERAL SUR / ESC. 1: 100

FACHADAS



PERSPECTIVAS EXTERIORES



PERSPECTIVAS INTERIORES