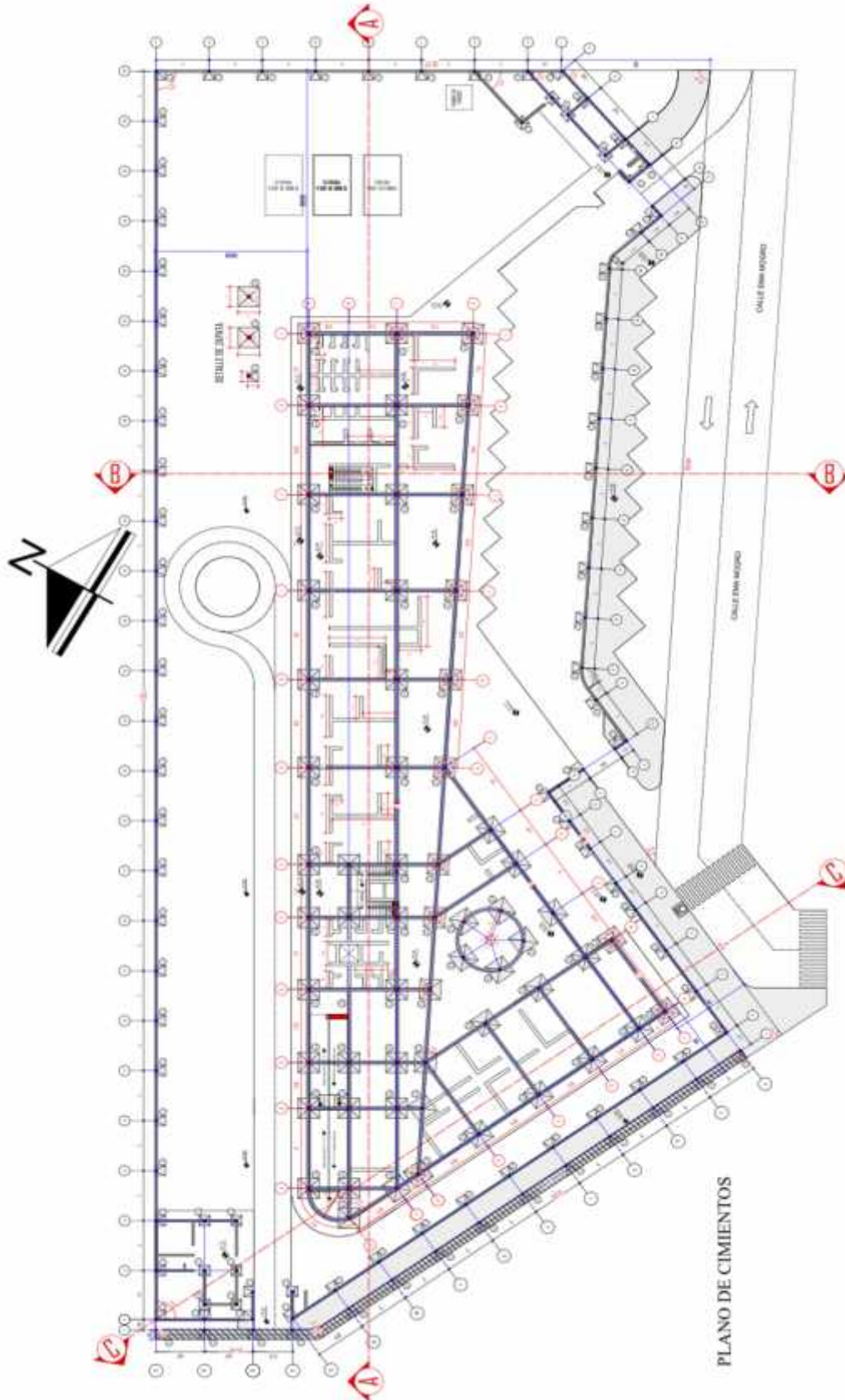


## 10.5 Planos Arquitectónicos

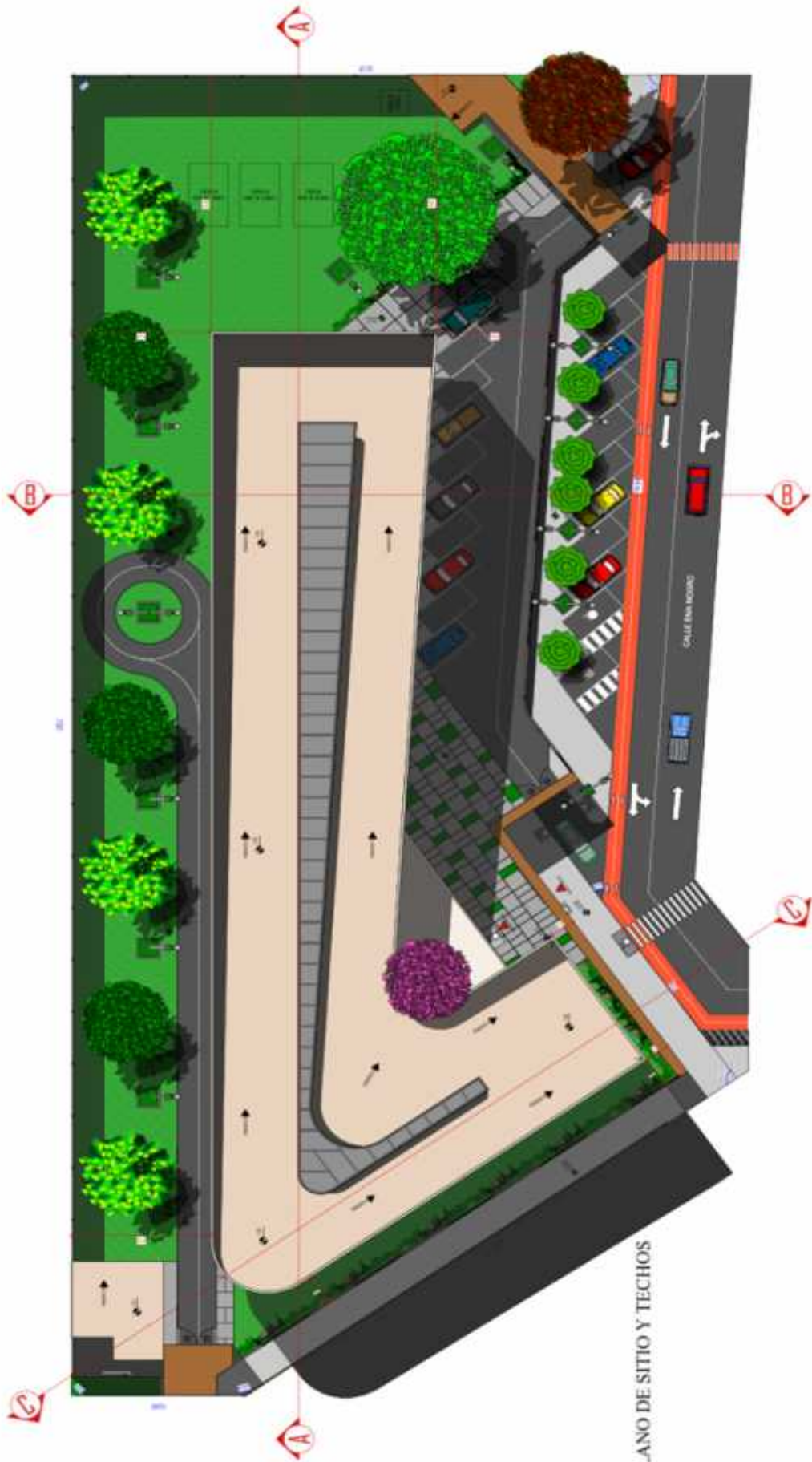




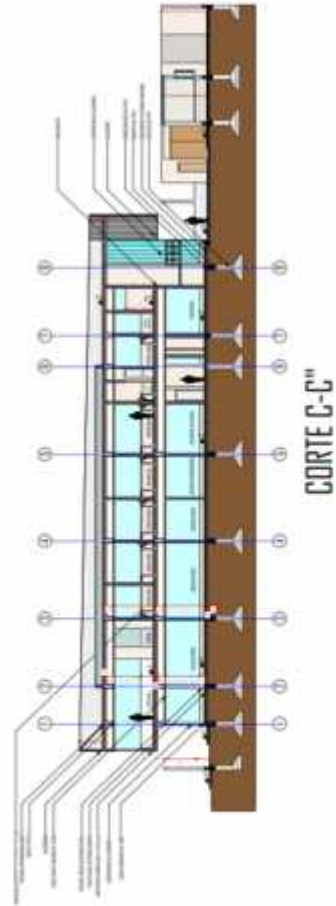
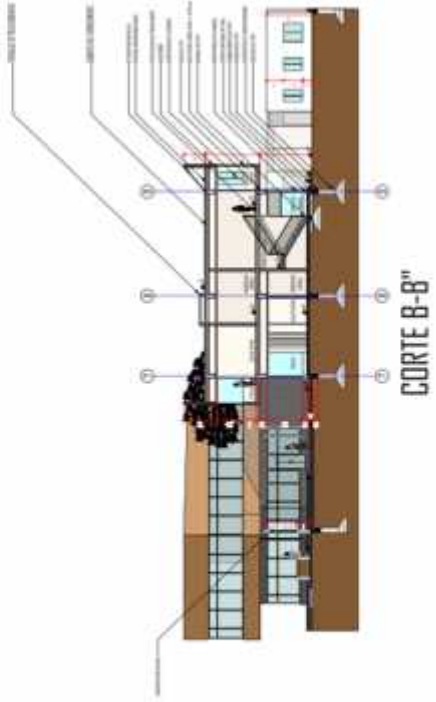
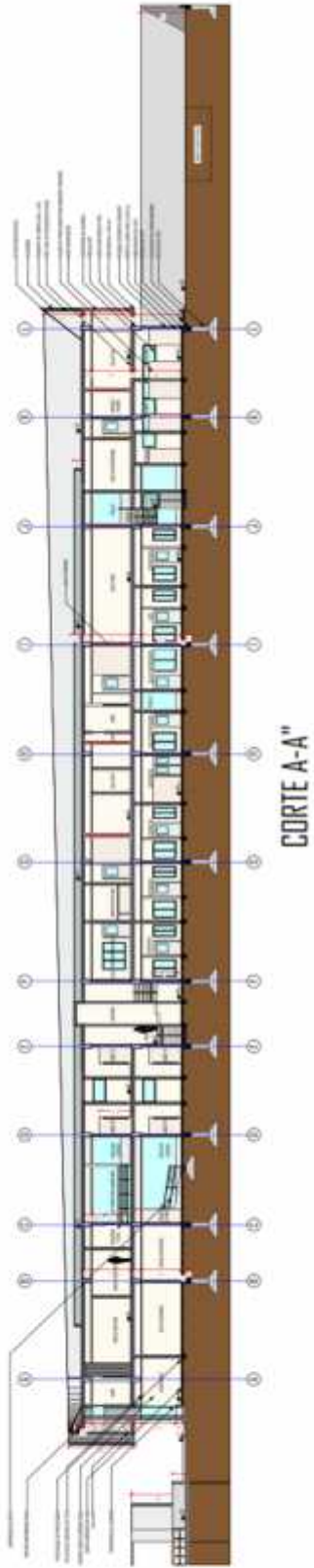
PLANTA BAJA AMOBLADA

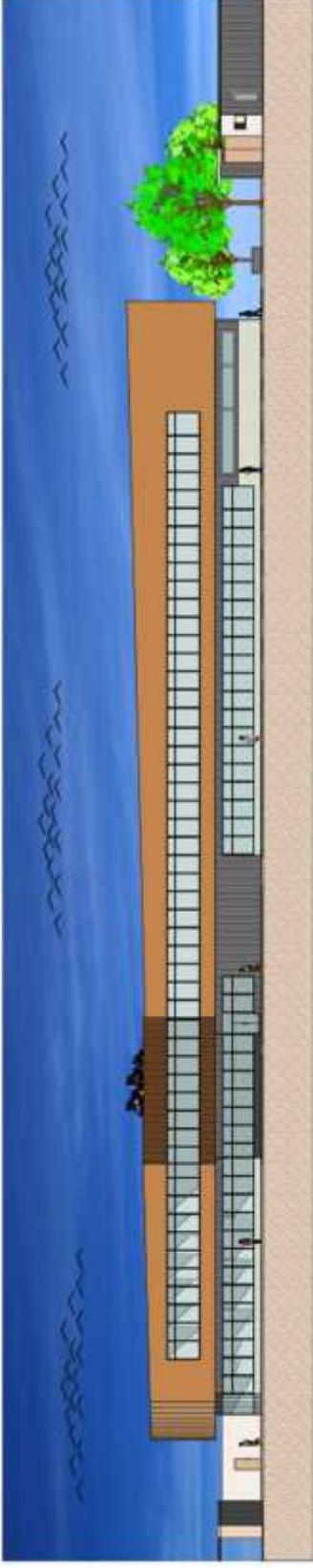


PLANTA ALTA AMOBLADA



PLANO DE SITIO Y TECHOS





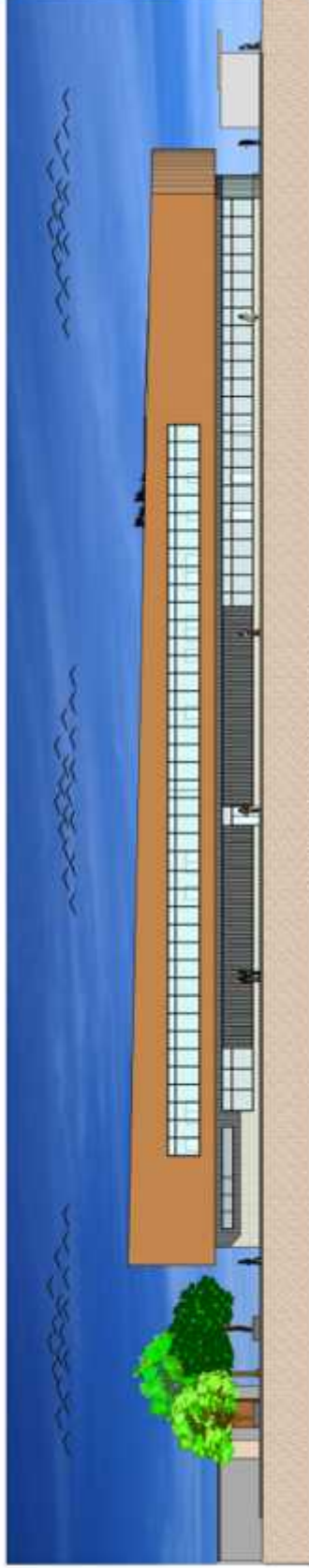
FACHADA FRONTAL SUR



FACHADA LATERAL ESTE



FACHADA LATERAL OESTE



FACHADA POSTERIOR NORTE

**PERSPECTIVAS INTERIORES**



**SALA DE DENSITOMETRIA OSEA**



**SALA DE RAYOS X**



**SALA DE RESONANCIA MAGNETICA**



**SALA DE TOMOGRAFIA**

**ERSPECTIVAS EXTERIORES**

