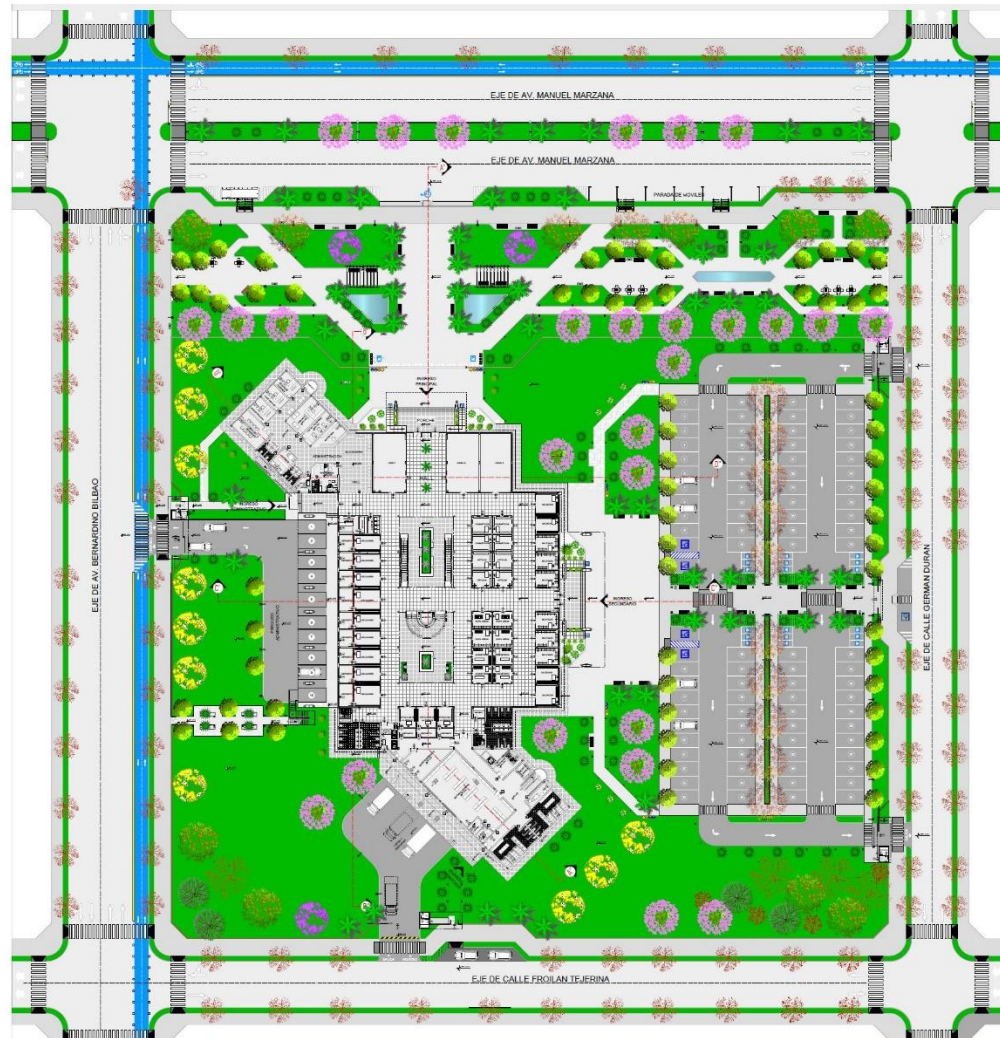




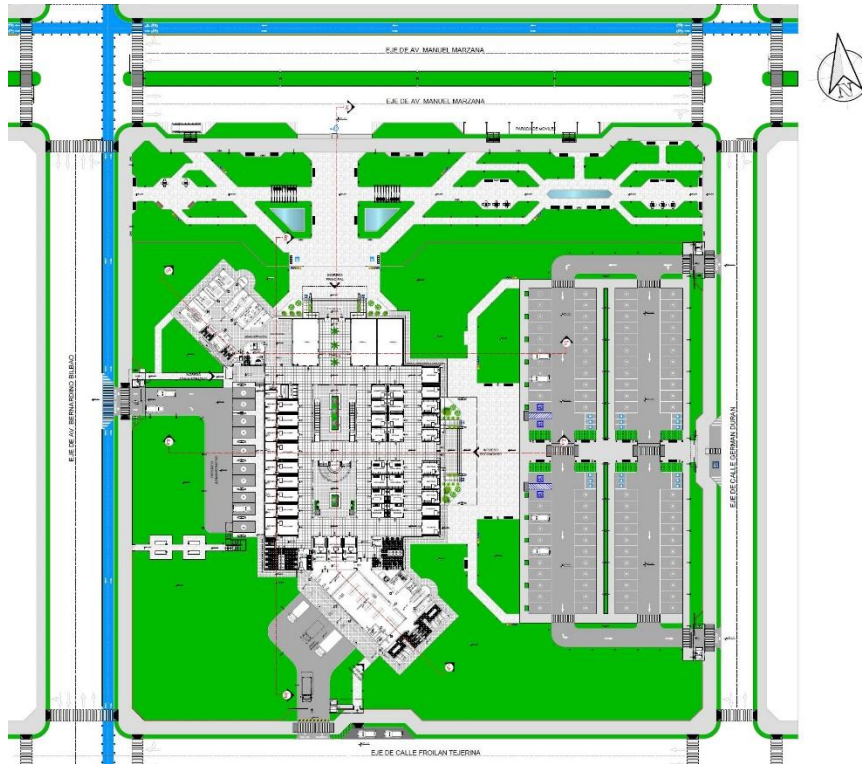
PLANOS

PLANIMETRIA:

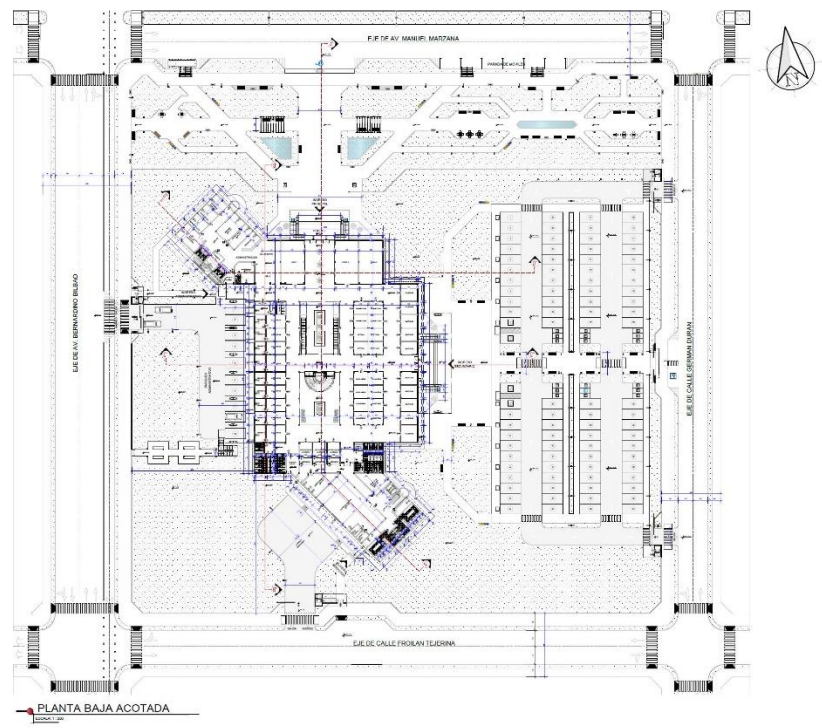




PLANTA BAJA AMOBLADA:

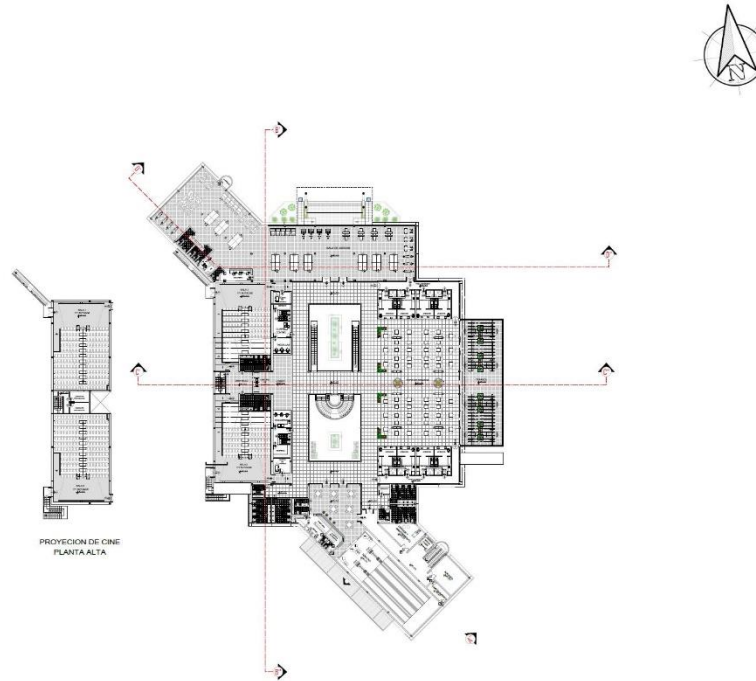


PLANTA BAJA ACOTADA:

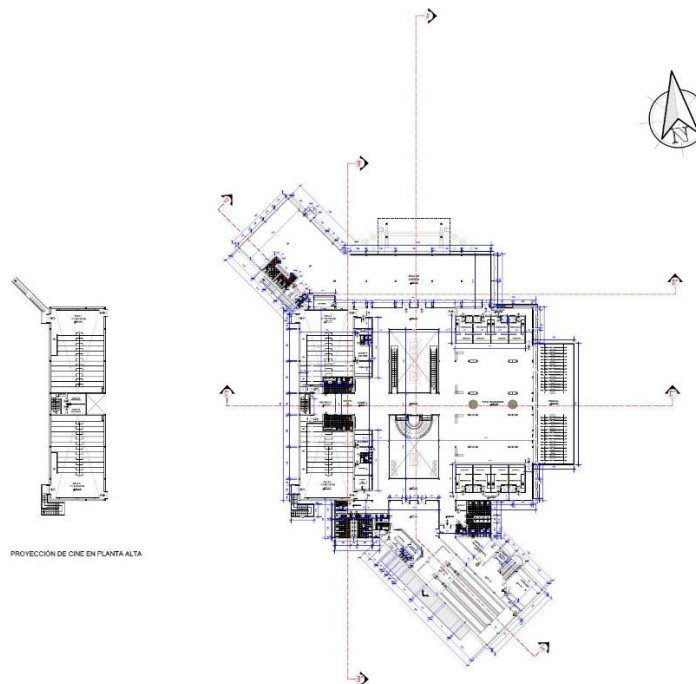




PLANTA ALTA AMOBLADA

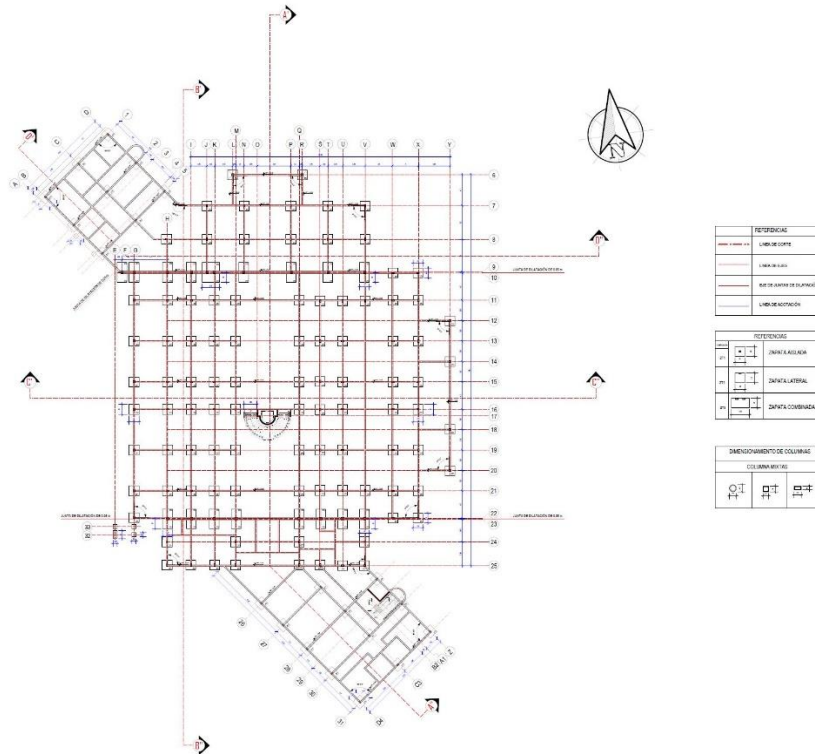


PLANTA ALTA ACOTADA:

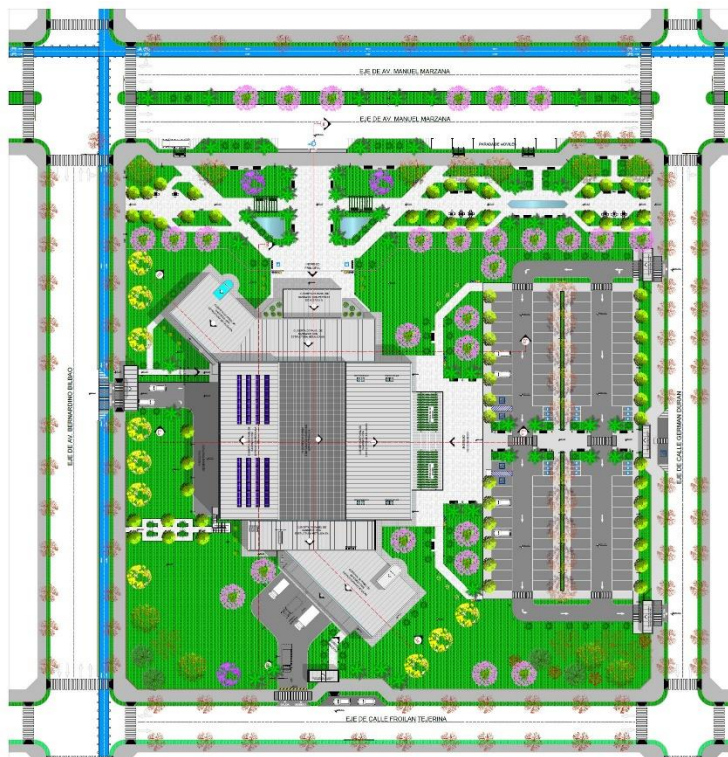




PLANO DE CIMIENTOS:

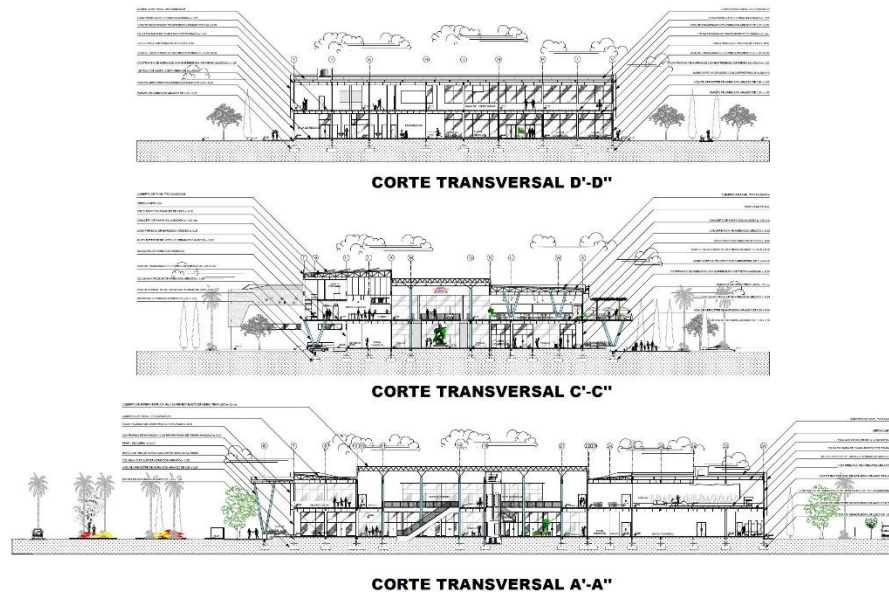


PLANO DE SITIO Y TECHO:





PLANO DE CORTES.



PLANO DE FACHADAS.



FACHADA PRINCIPAL



FACHADA LATERAL DERECHO



FACHADA POSTERIOR





PERSPECTIVAS:

INTERIORES







EXTERIORES



