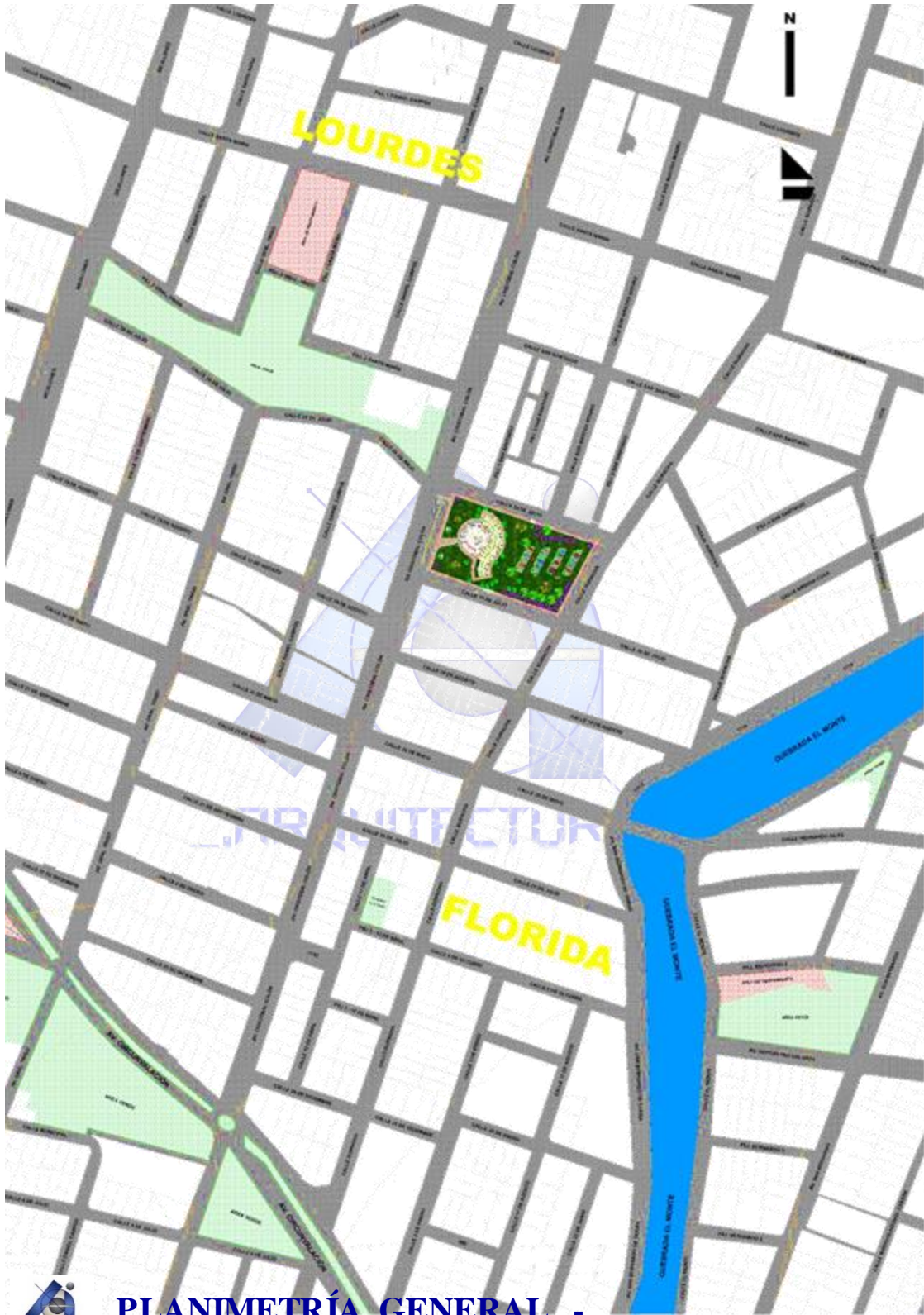




# PLANOS ARQUITECTÓNICOS. -

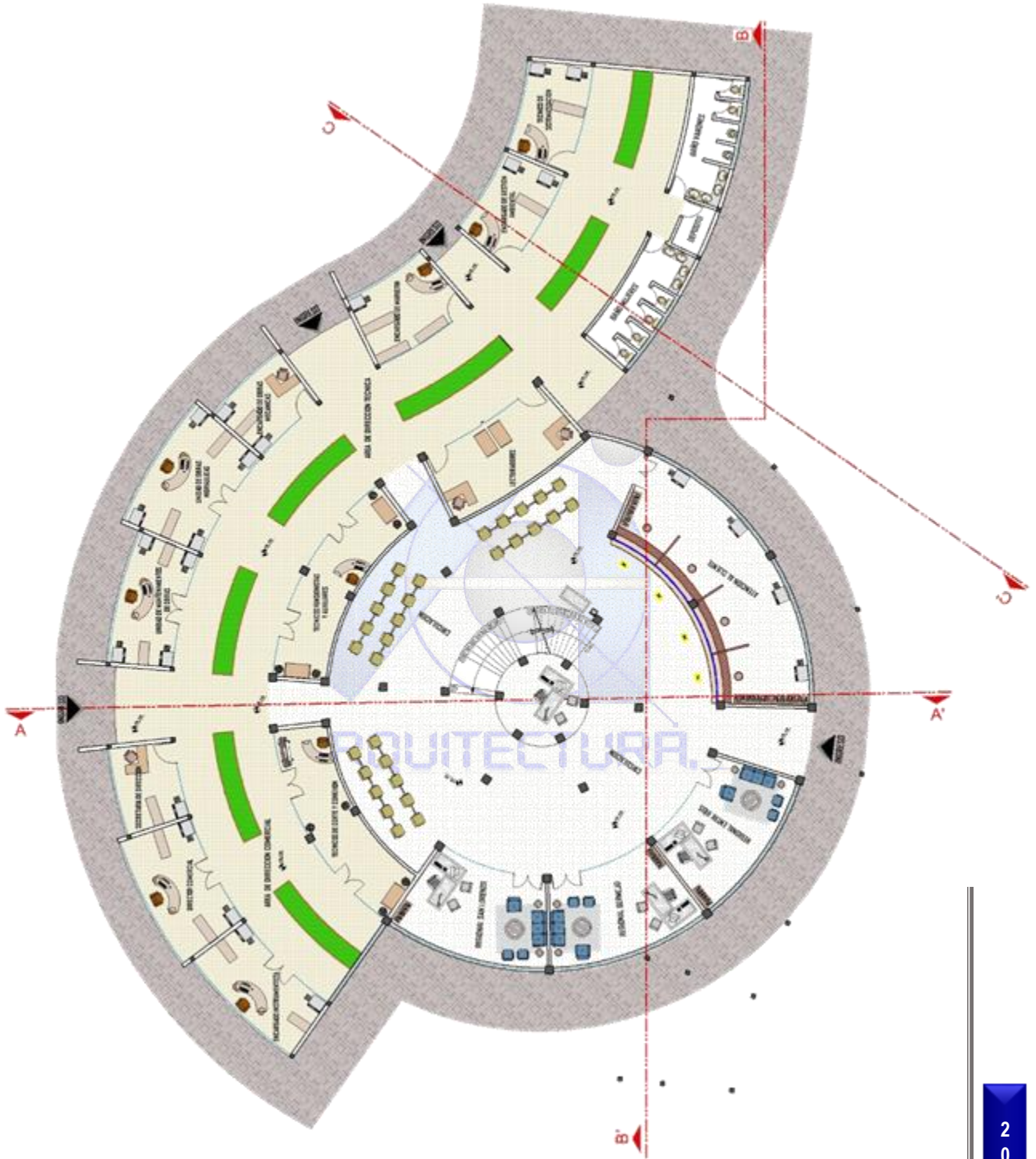
ARQUITECTURA.

2  
0  
2  
2



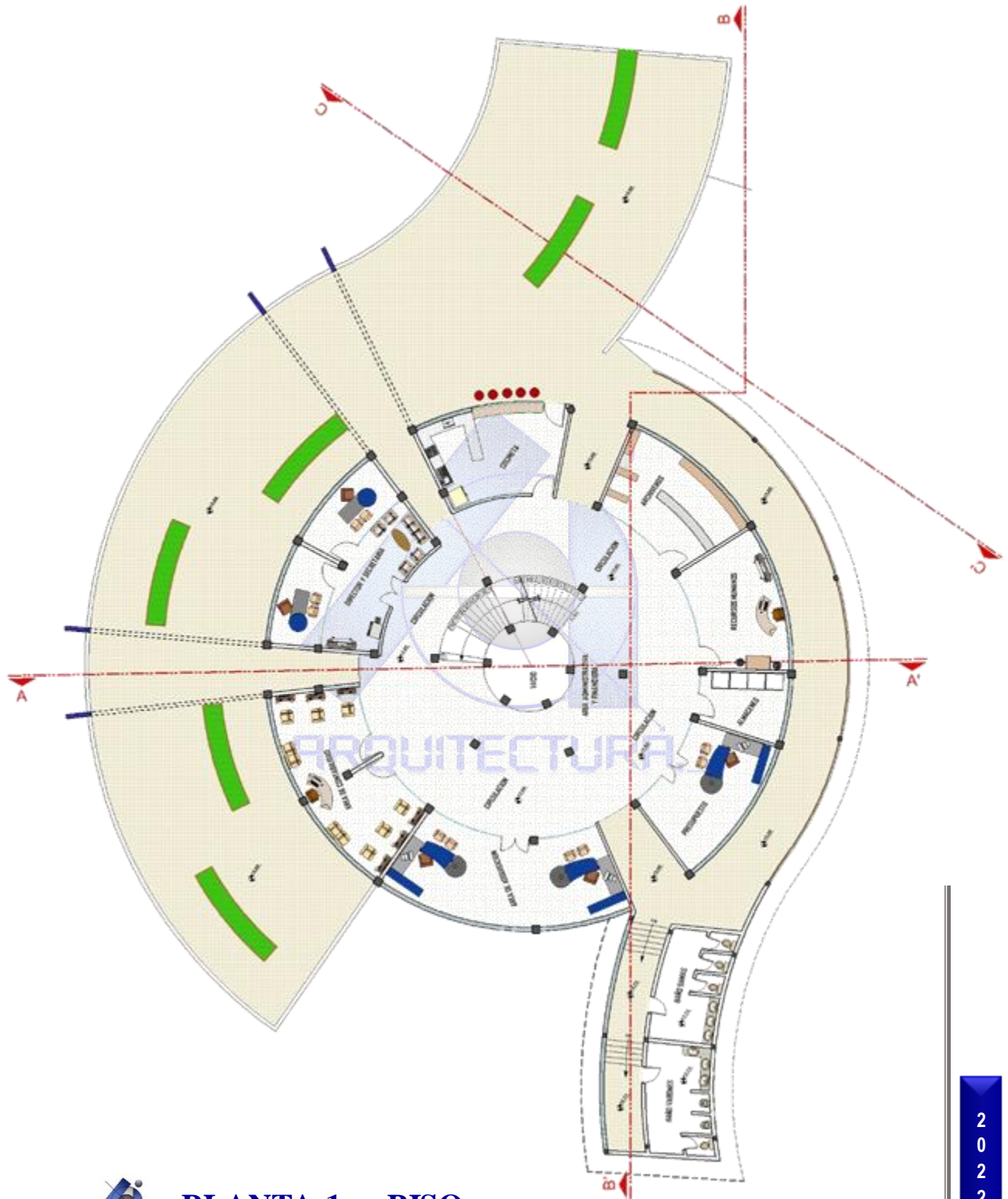
PLANIMETRÍA GENERAL. -

2  
0  
2  
2



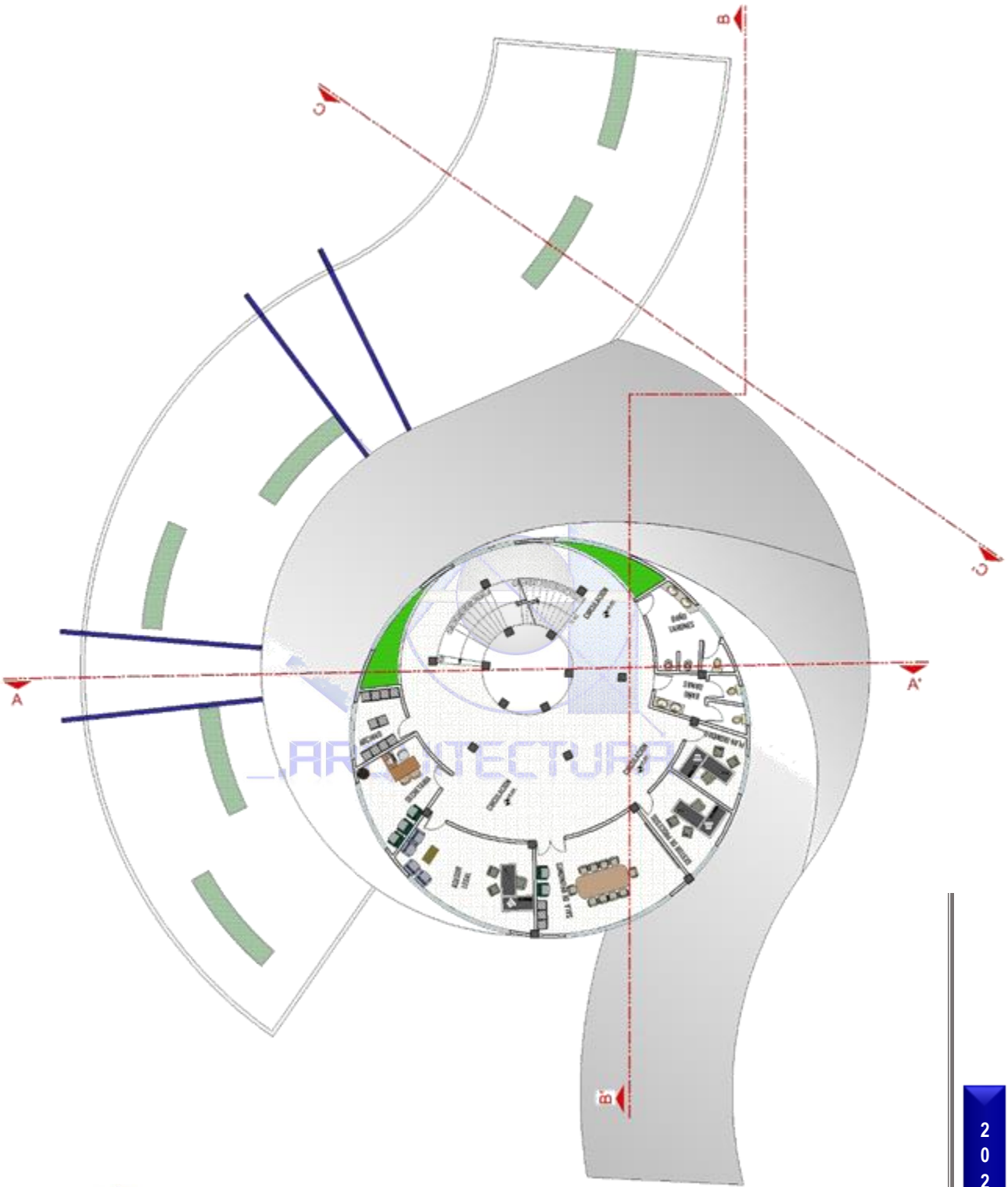
PLANTA BAJA. -

2  
0  
2  
2



PLANTA 1er. PISO. -

2  
0  
2  
2



PLANTA 2do. PISO. -

2  
0  
2  
2







## FACHADA PRINCIPAL. -



## FACHADA POSTERIOR. -

2  
0  
2  
2



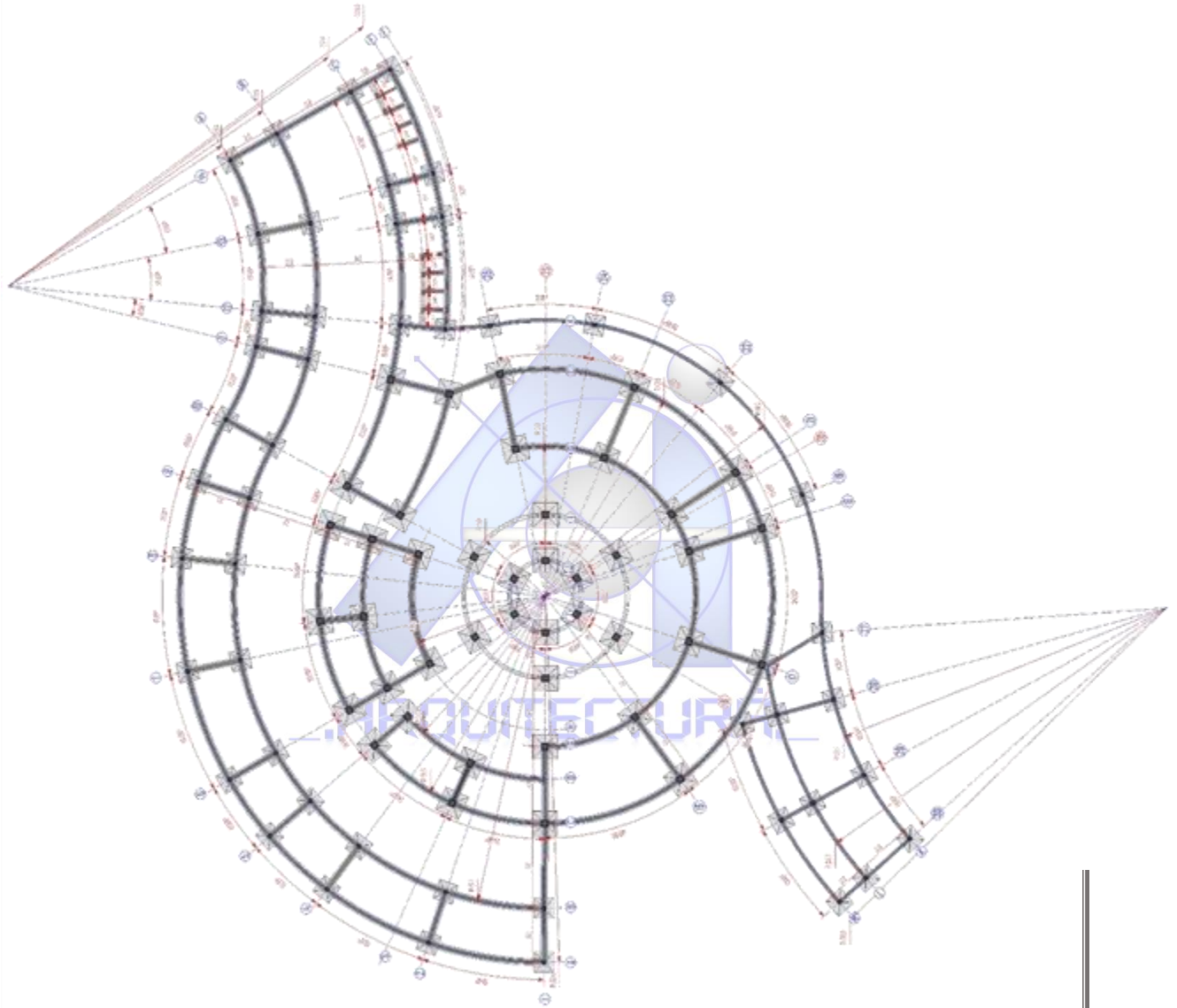


## FACHADA LATERAL IZQUIERDA. -



## FACHADA LATERAL DERECHA. -

2  
0  
2  
2



## PLANO DE CIMIENTOS Y FUNDACIONES. -

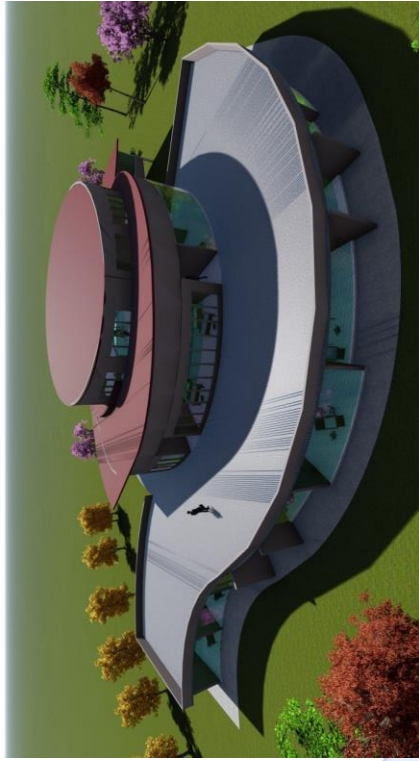
2  
0  
2  
2



**PLANO DE SITIOS Y TECHOS. -**

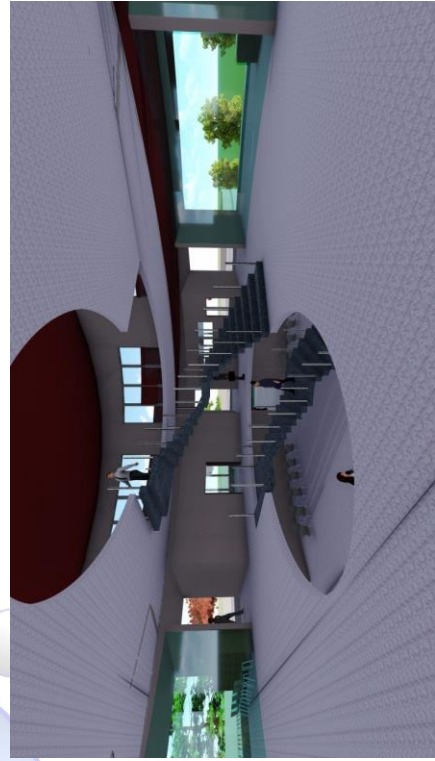
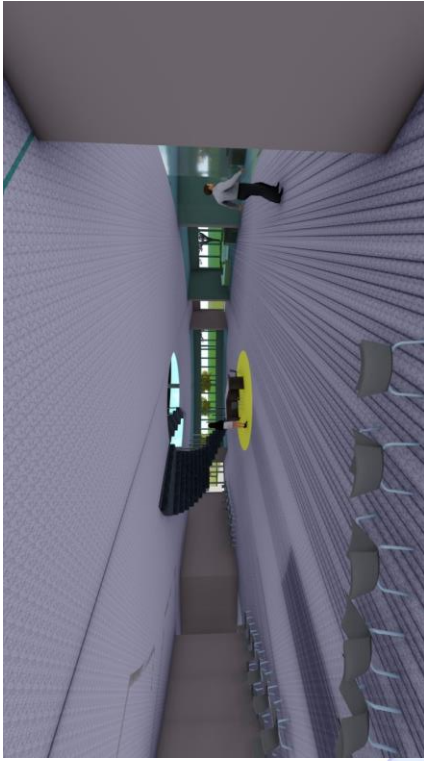
2  
0  
2  
2





## PERSPECTIVAS EXTERIORES. -





## PERSPECTIVAS INTERIORES. -

