


Cubierta
 Despiece de vigas
 Hormigón: H-25
 Acero en barras: AH-500
 Acero en estribos: AH-500
 Escala pórticos 1:100
 Escala secciones 1:100
 Escala huecos 1:100


| Resumen Acero | Long. total (m) | Peso+10% (kg) | Total |
|---------------|-----------------|---------------|-------|
| AH-500 | 2255.7 | 551 | |
| Ø10 | 1385.7 | 940 | |
| Ø12 | 3.1 | 3 | 1494 |

| | | |
|---|--------------------------|--|
|  UNIVERSIDAD AUTÓNOMA JUAN MISAEL SARACHO | | PLANO 9 16 |
| PROYECTO CONSTRUCCIÓN DEL NUEVO COLEGIO DE RANCHO E.D. SAN LORENZO | | |
| CONECTOR DE DETALLE DE VIGAS TIPO CUBIERTA | | DEPARTAMENTO TARAJA PROVINCIA MERCEZ MUNICIPIO SAN LORENZO |
| UNIVERSITARIO ROBERT HORACIO NINA GIRA | | |
| ESCALA 1:100 | FECHA 1.A. MAYO DEL 2024 | |

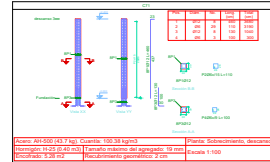
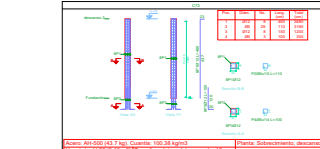
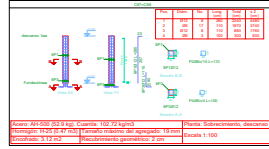
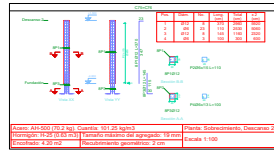
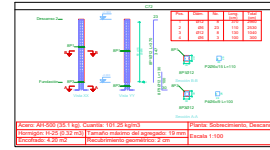
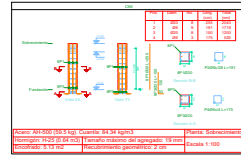
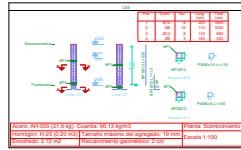
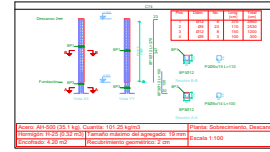
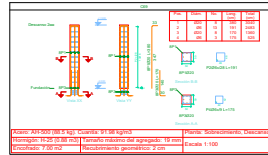
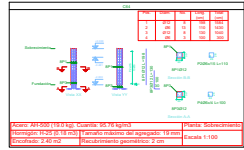
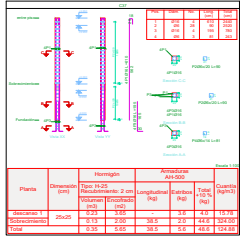
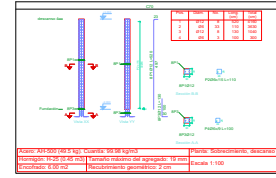
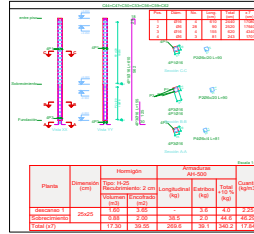
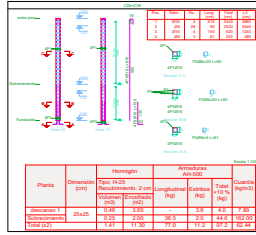
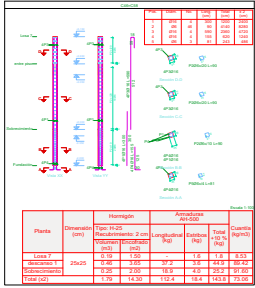
| | | | | | | | | | | | | | | | | | |
|----------------------|------------------------|-------|---------------------|-----|-------------|---------------------|-------------------------|---------|-----|-----|-----|---------|-----|-----|---------|-----------------|---------------|
| C3=C36=C7=C9=C13=C17 | C3=C37=C41=C45=C49=C53 | C3=C4 | C34=C36=C40=C44=C48 | C35 | C37=C38=C39 | C43=C45=C49=C53=C57 | C44=C47=C50=C53=C56=C59 | C46=C58 | C64 | C65 | C66 | C67=C68 | C69 | C70 | C71=C73 | C72=C74=C75=C76 | Jos 9 |
| | | | | | | | | | | | | | | | | | Cubierta |
| | | | | | | | | | | | | | | | | | Jos 7 |
| | | | | | | | | | | | | | | | | | entre piso |
| | | | | | | | | | | | | | | | | | Resaca 4 |
| | | | | | | | | | | | | | | | | | Resaca 3 |
| | | | | | | | | | | | | | | | | | Resaca 2 |
| | | | | | | | | | | | | | | | | | Resaca 1 |
| | | | | | | | | | | | | | | | | | sobrecimiento |
| | | | | | | | | | | | | | | | | | fundación |

| Resumen Acero | Long total (m) | Peso 10% (kg) | Total |
|---------------|----------------|---------------|-------|
| AH-500 | 06 | 3862.9 | 943 |
| | Ø12 | 3679.9 | 3594 |
| | Ø16 | 1145.4 | 1989 |
| | Ø20 | 76.4 | 207 |
| | | | 6733 |

Cuadro de columnas
Escala 1:100
Hormigón: H-25
Acero en barras: AH-500
Acero en estribos: AH-500

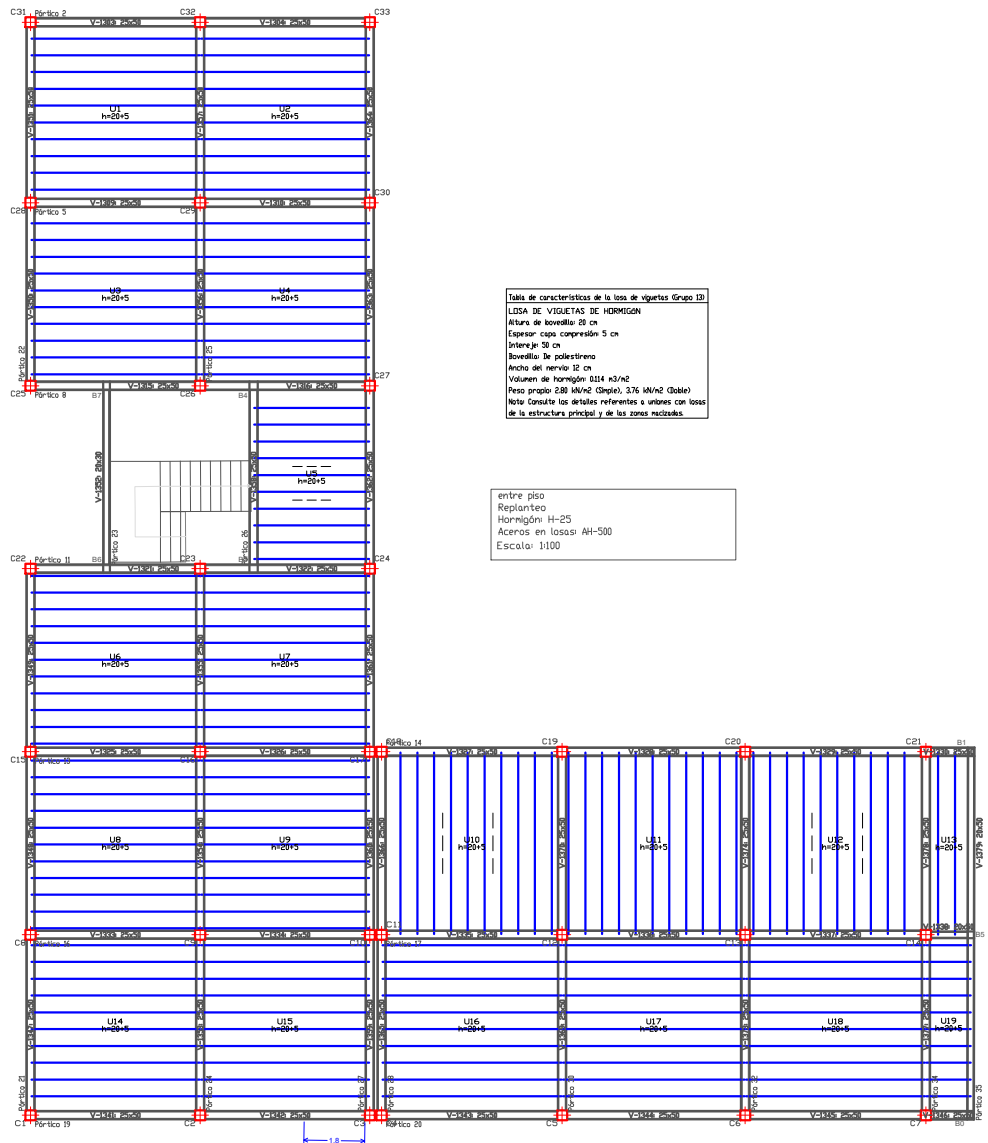
| | | | |
|---|--|--|--|
|  | | UNIVERSIDAD AUTÓNOMA JUAN MISAEL SARACHO | |
| | | PROYECTO: CONSTRUCCIÓN DEL NUEVO COLEGIO DE RANCHO SUD - SAN LORENZO | |
| CARACTER: CUADRO DE COLUMNAS | | | |
| DEPARTAMENTO: TARLIA PROVINCIA: MENDEZ MUNICIPIO: SAN LORENZO | UNIVERSITARIO: ROBERT HORACIO NINA GIRA | PLANO: 10 16 | |
| V"B | ESCALA: 1:85 | FECHA: TJA, MAYO DEL 2024 | |

Placas que hacen en Sobrecimiento y muestran en Lote 3
 Rompición: H-25
 Acero en barras: AH-500
 Acero en estribos: AH-500




| Resistencia Acero | Long. (m) | Peso (kg) | Total |
|-------------------|-----------|-----------|-------|
| Ø25 | 360.3 | 343 | |
| Ø20 | 367.9 | 354 | |
| Ø16 | 146.4 | 166 | |
| Ø10 | 74.4 | 207 | 873 |

| Elemento | Planta | Dim. (m) | Hormigón | Acero | Cantidad (kg) |
|-------------------|-------------|-------------|----------|-------|---------------|
| Lote 3 | 0.18 x 1.20 | 0.18 x 1.20 | 1.18 | 1.18 | 8.35 |
| Acero en barras | 25x25 | 0.18 x 1.20 | 1.18 | 1.18 | 44.4 |
| Acero en estribos | 25x25 | 0.18 x 1.20 | 1.18 | 1.18 | 21.60 |
| Total (kg) | | | | | 70.35 |



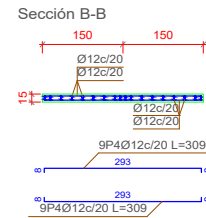
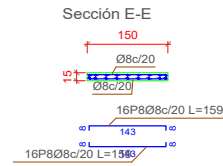
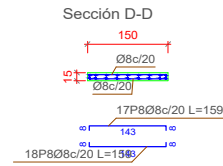
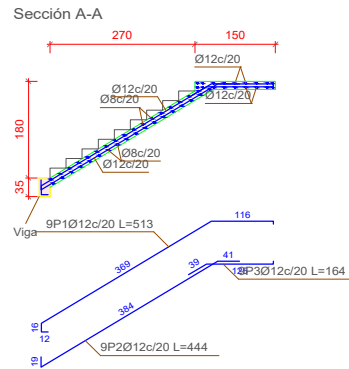
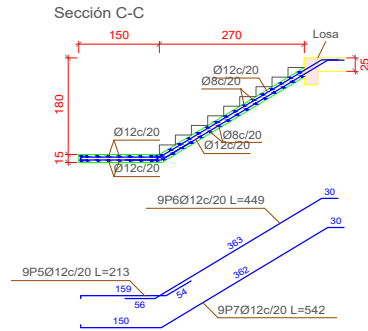
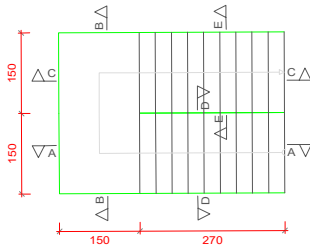
Tala de características de la losa de viguetas (Grupo ID)
 LOSA DE VIGUETAS DE HORMIGÓN
 Altura de losavilla 20 cm
 Espesor capa compresión 5 cm
 Interjele 30 cm
 Bovedillo de poliestireno
 Ancho del nervio 12 cm
 Volumen de hormigón 0.14 m³/m²
 Peso propio 2.88 kN/m² (Simple), 3.76 kN/m² (Doble)
 Nota: Consultar los detalles referentes a uniones con losas de la estructura principal y de las zonas nucleadas.

entre piso
 Replanteo
 Hormigón: H-25
 Aceros en losas: AH-500
 Escala: 1/100

| | | |
|---|--|--|
|  | UNIVERSIDAD AUTÓNOMA JUAN MISAEI SARACHO | |
| | PROYECTO: CONSTRUCCIÓN DEL NUEVO COLEGIO DE RANCHO SUD - SAN LORENZO* | |
| CARACTER: LOSA ALIVIANADA | | |
| DEPARTAMENTO: TARIJA PROVINCIA: MENDEZ MUNICIPIO: SAN LORENZO | UNIVERSITARIO: ROBERT HORACIO NINA GIRA | PLANO: 13 <hr/> 16 |
| V'B* | ESCALA: 1:100 | FECHA: T.JA. MAYO DEL 2024 |

Escalera 1


| Tramo 1 | |
|--------------------------------------|------------------------|
| Geometría | |
| Ancho | 1.500 m |
| Espesor | 0.15 m |
| Huella | 0.300 m |
| Contrahuella | 0.180 m |
| Desnivel que salva | 3.60 m |
| Nº de escalones | 20 |
| Planta final | entre piso |
| Planta inicial | Sobrecimiento |
| Cargas | |
| Peso propio | 3.68 kN/m ² |
| Peldañeado (Hormigonado con la losa) | 1.89 kN/m ² |
| Solado | 1.00 kN/m ² |
| Barandillas | 0.30 kN/m |
| Sobrecarga de uso | 3.00 kN/m ² |
| Materiales | |
| Hormigón | H-25 |
| Acero | AH-500 |
| Rec. geométrico | 3.0 cm |



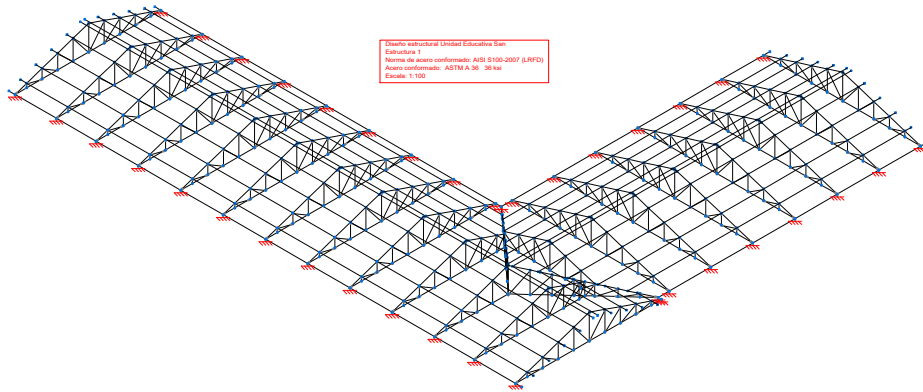
Escala 1:100

| Elemento | Pos. | Diám. | No. | Long. (cm) | Total (cm) | AH-500 (kg) |
|--------------------|------|-------|-----|------------|------------|-------------|
| Escalera 1-Tramo 1 | 1 | Ø12 | 9 | 513 | 4617 | 41.0 |
| | 2 | Ø12 | 9 | 444 | 3996 | 35.5 |
| | 3 | Ø12 | 9 | 164 | 1476 | 13.1 |
| | 4 | Ø12 | 18 | 309 | 5562 | 49.4 |
| | 5 | Ø12 | 9 | 213 | 1917 | 17.0 |
| | 6 | Ø12 | 9 | 449 | 4041 | 35.9 |
| | 7 | Ø12 | 9 | 542 | 4878 | 43.3 |
| | 8 | Ø8 | 67 | 159 | 10653 | 42.0 |
| Total+10%: | | | | | | 304.9 |
| Ø8: | | | | | | 46.2 |
| Ø12: | | | | | | 258.7 |
| Total: | | | | | | 304.9 |

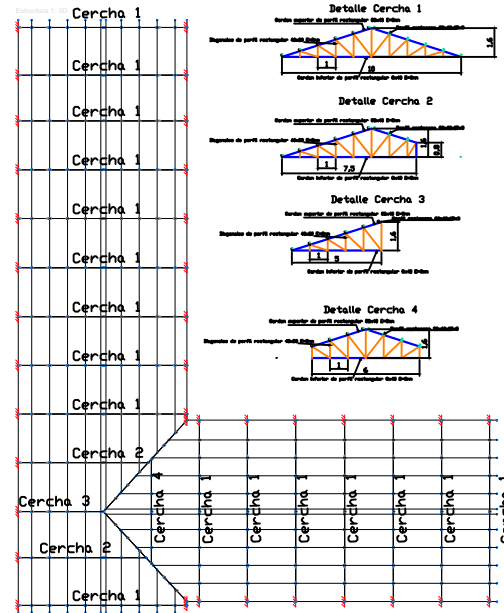
| Resumen Acero Escalera 1 | Long. total (m) | Peso+10% (kg) | Total |
|--------------------------|-----------------|---------------|-------|
| AH-500 Ø8 | 106.5 | 46 | 305 |
| Ø12 | 264.9 | 259 | 305 |

| | | |
|---|--|-------------------------------|
|  | UNIVERSIDAD AUTÓNOMA JUAN MISHAEL SARACHO | |
| | PROYECTO: CONSTRUCCIÓN DEL NUEVO COLEGIO DE RANCHO SUD - SAN LORENZO* | |
| CARACTER: ESCALERA DE H"A | | |
| DEPARTAMENTO: TARJUA PROVINCIA: MENDEZ MUNICIPIO: SAN LORENZO | UNIVERSITARIO: ROBERT HORACIO NINA GIRA | PLANO: 15 16 |
| V"B" | ESCALA: 1:50 | FECHA: T.JA. MAYO DEL 2024 |

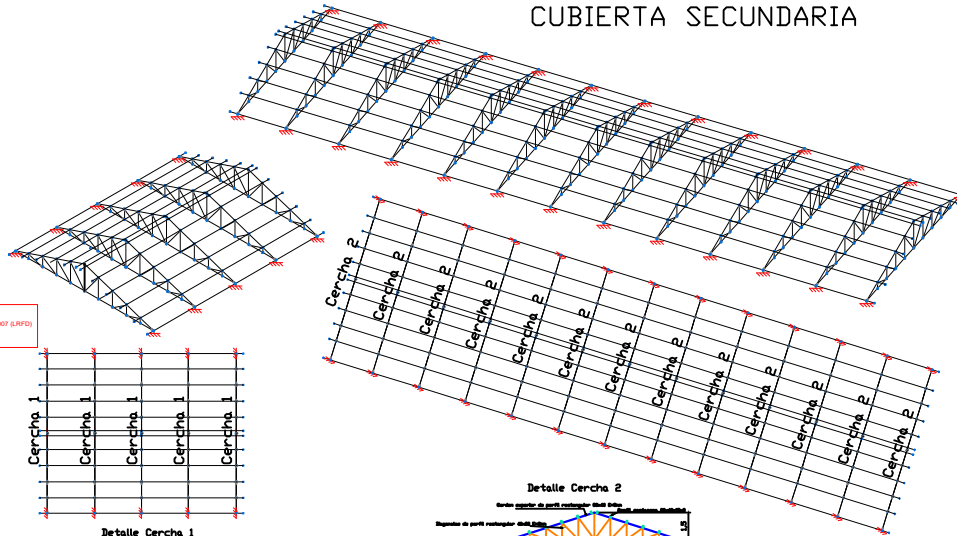
CUBIERTA PRIMICIPAL



Oficina estructural Unidad Educativa San
 Esteban 1
 Norma de acero conformada: AISI 9100-2007 (S.R.F.D.)
 Acero conformado: ASTM A 36 36 ksi
 Escala: 1:100



CUBIERTA SECUNDARIA



Oficina estructural Unidad Educativa San
 Esteban 1
 Norma de acero conformada: AISI 9100-2007 (S.R.F.D.)
 Acero conformado: ASTM A 36 36 ksi
 Escala: 1:100

