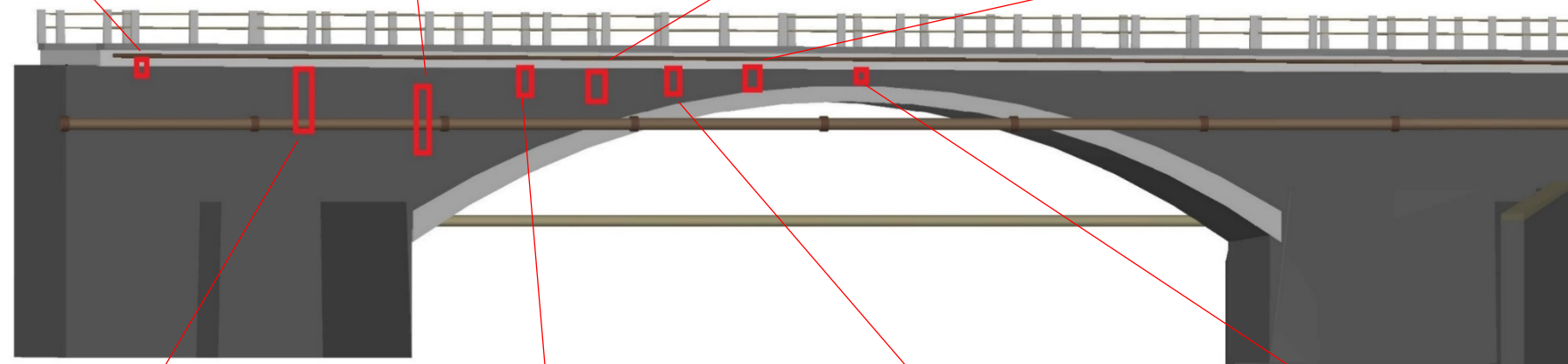
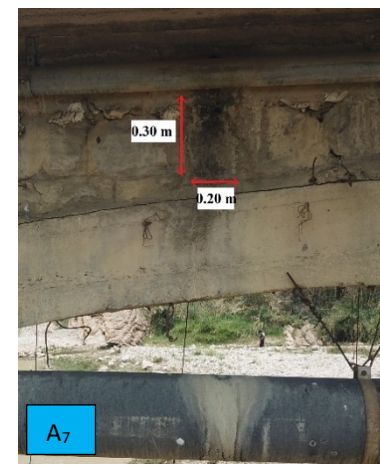
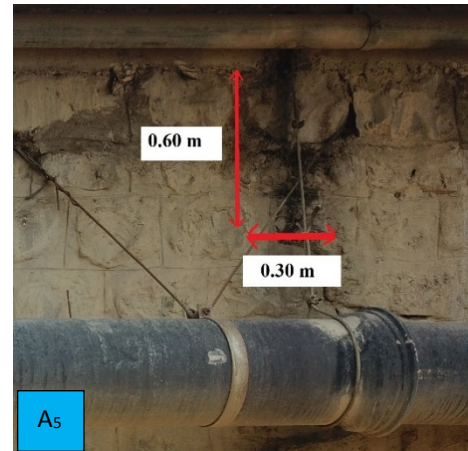
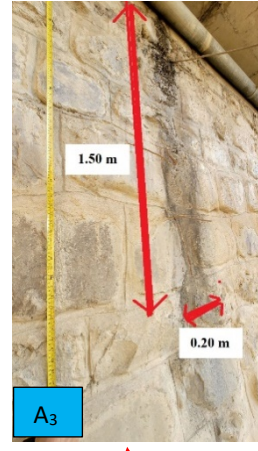
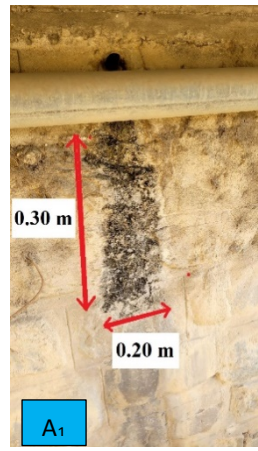


ANEXO 2

CROQUIS Y METRADOS DE

PATOLOGIAS



CANTIDAD DE AREA AFECTADA (m²)

$$A_1 = 0.30 \times 0.20 = 0.06 \text{ m}^2$$

$$A_2 = 1.20 \times 0.20 = 0.24 \text{ m}^2$$

$$A_3 = 1.50 \times 0.20 = 0.3 \text{ m}^2$$

$$A_4 = 0.40 \times 0.20 = 0.08 \text{ m}^2$$

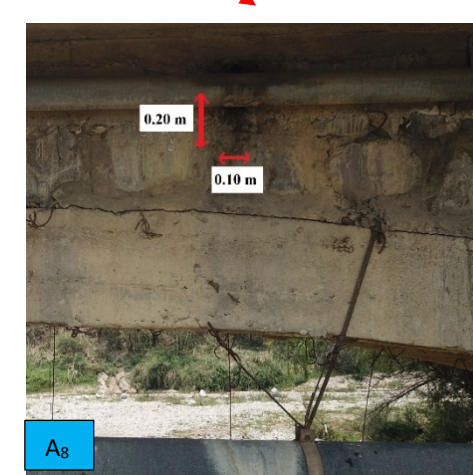
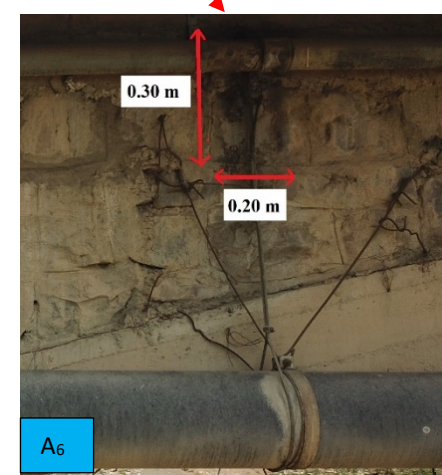
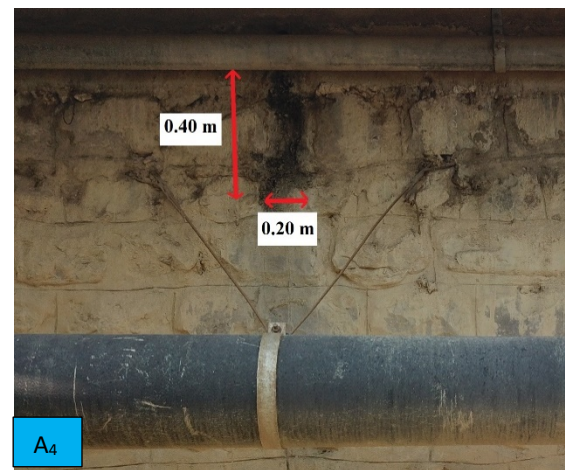
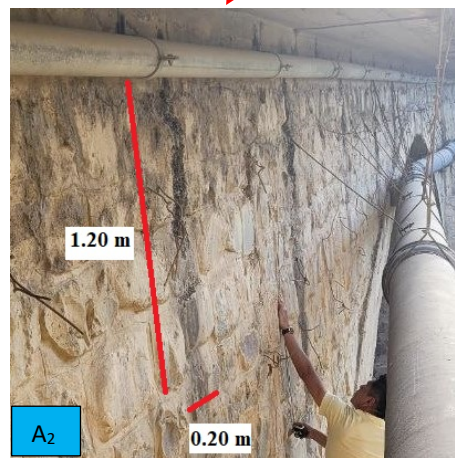
$$A_5 = 0.60 \times 0.30 = 0.18 \text{ m}^2$$

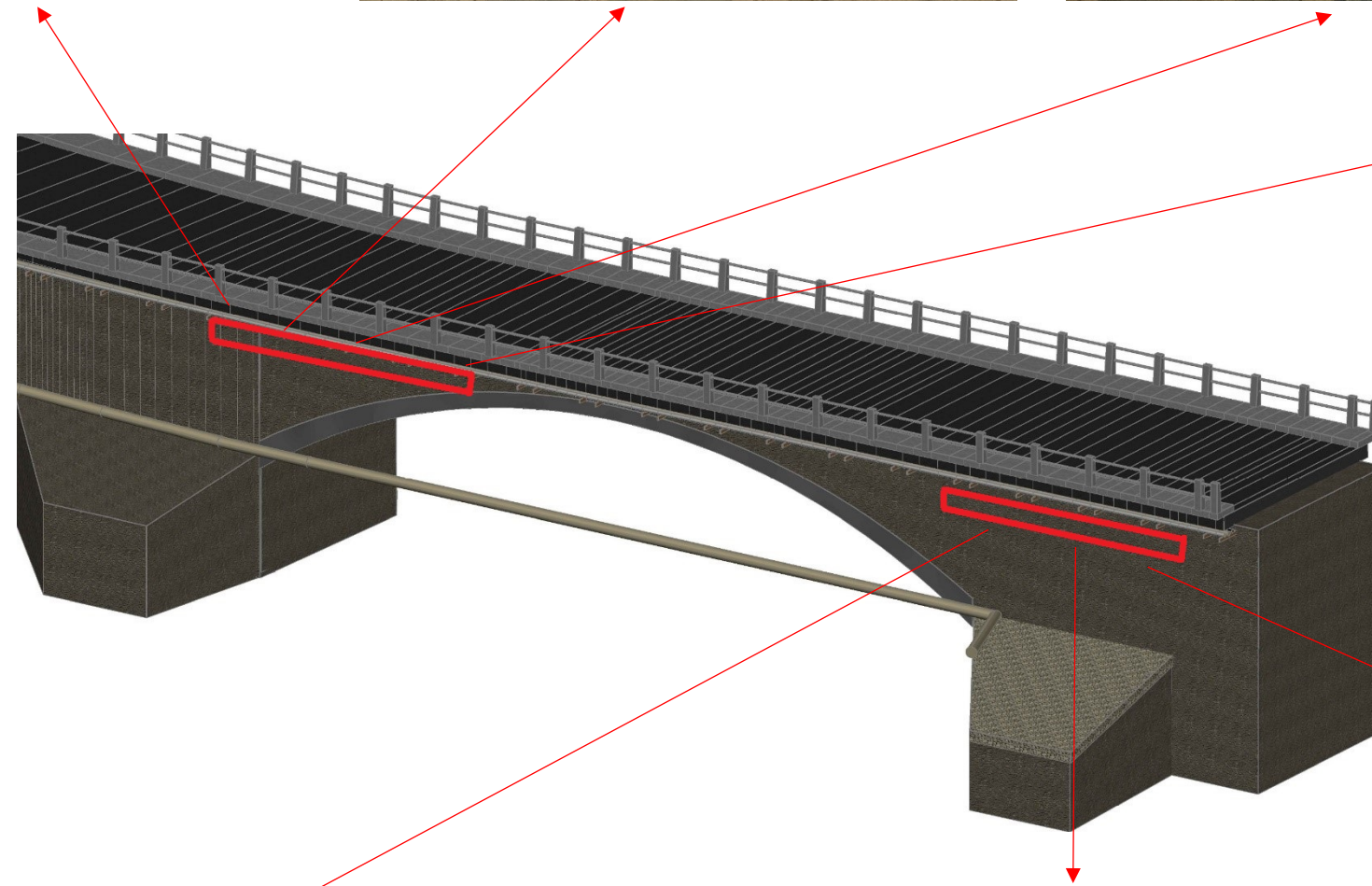
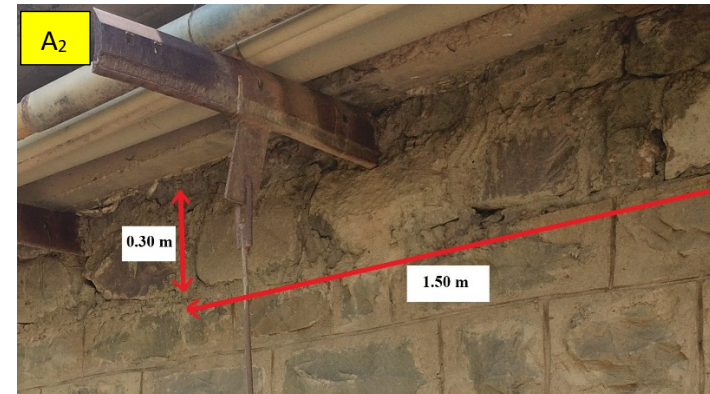
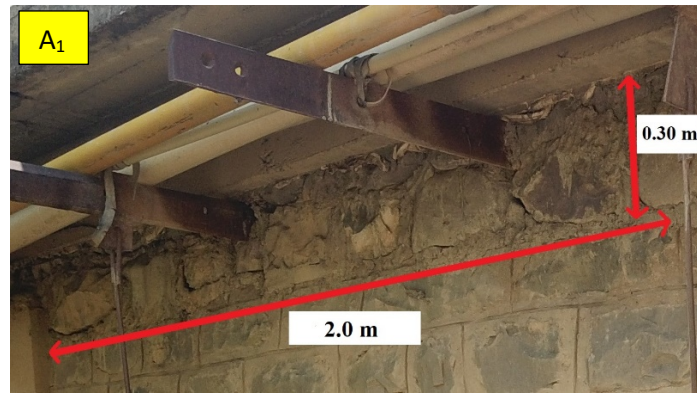
$$A_6 = 0.30 \times 0.20 = 0.06 \text{ m}^2$$

$$A_7 = 0.30 \times 0.20 = 0.06 \text{ m}^2$$

$$A_8 = 0.20 \times 0.10 = 0.02 \text{ m}^2$$

$$A_{TOTAL} = 1 \text{ m}^2$$





CANTIDAD DE AREA AFECTADA (m²)

$$A_1 = 2.00 \times 0.30 = 0.60 \text{ m}^2$$

$$A_2 = 1.50 \times 0.30 = 0.45 \text{ m}^2$$

$$A_3 = 1.10 \times 0.30 = 0.33 \text{ m}^2$$

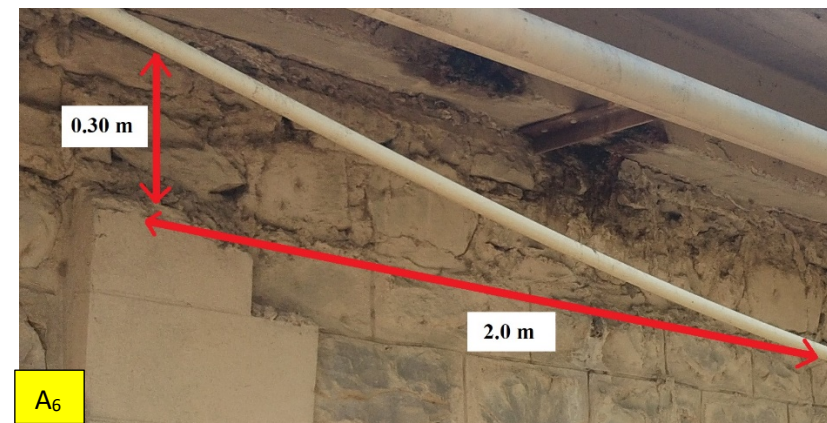
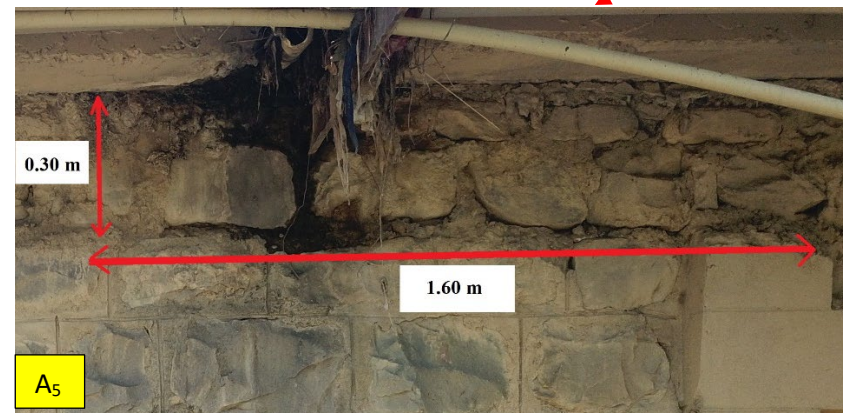
$$A_4 = 1.10 \times 0.30 = 0.33 \text{ m}^2$$

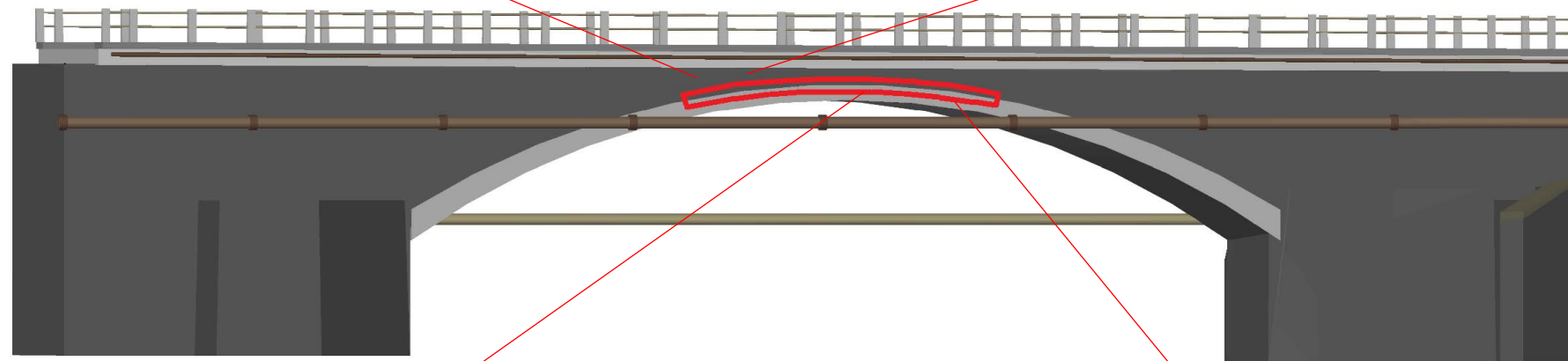
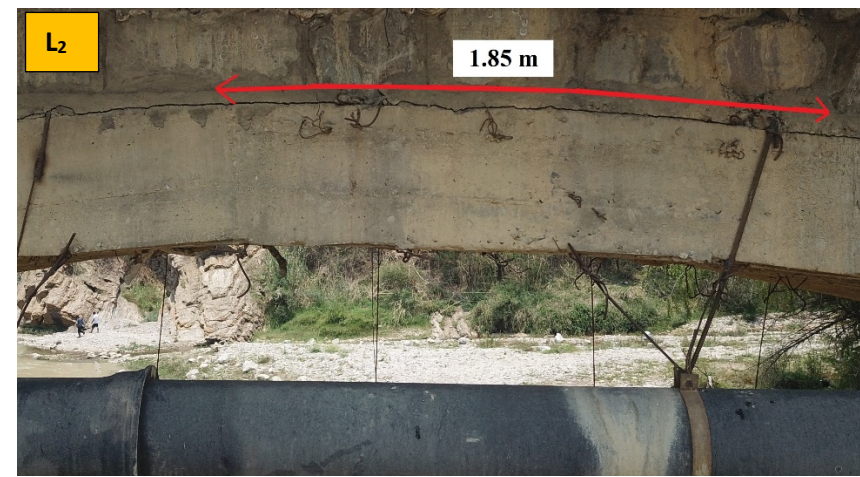
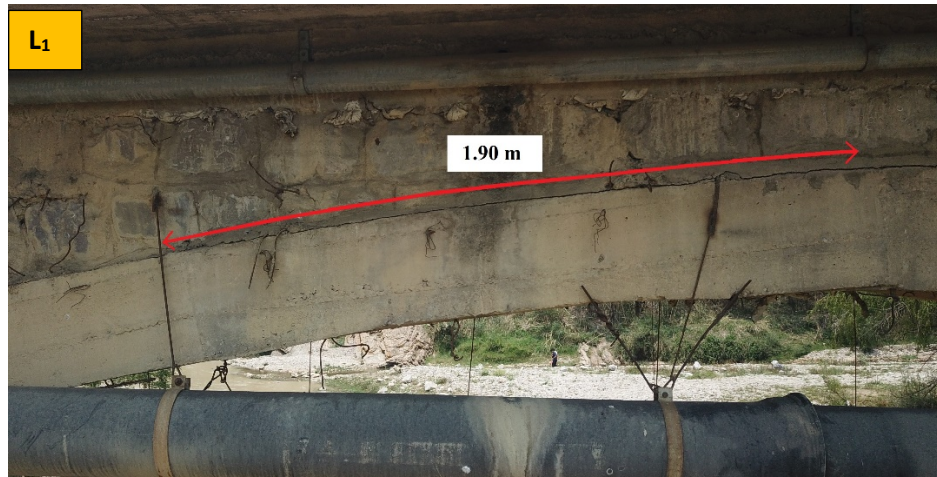
$$A_5 = 1.60 \times 0.30 = 0.48 \text{ m}^2$$

$$A_6 = 2.00 \times 0.30 = 0.6 \text{ m}^2$$

$$A_7 = 2.00 \times 0.30 = 0.6 \text{ m}^2$$

$$A_{TOTAL} = 3.38 \text{ m}^2$$

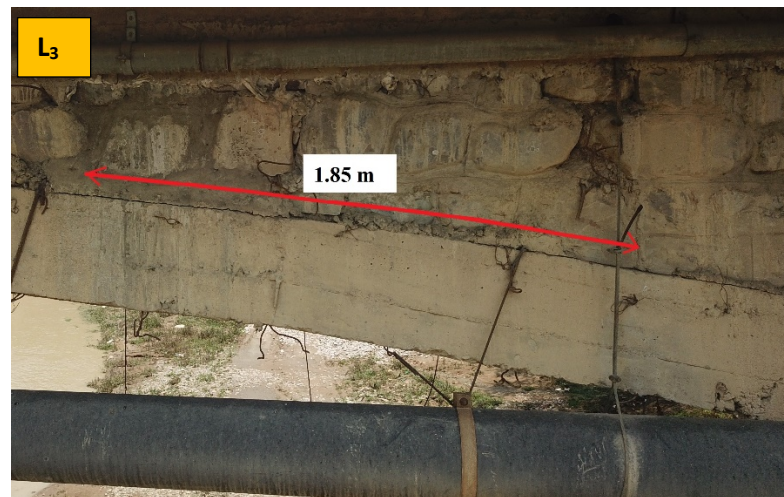


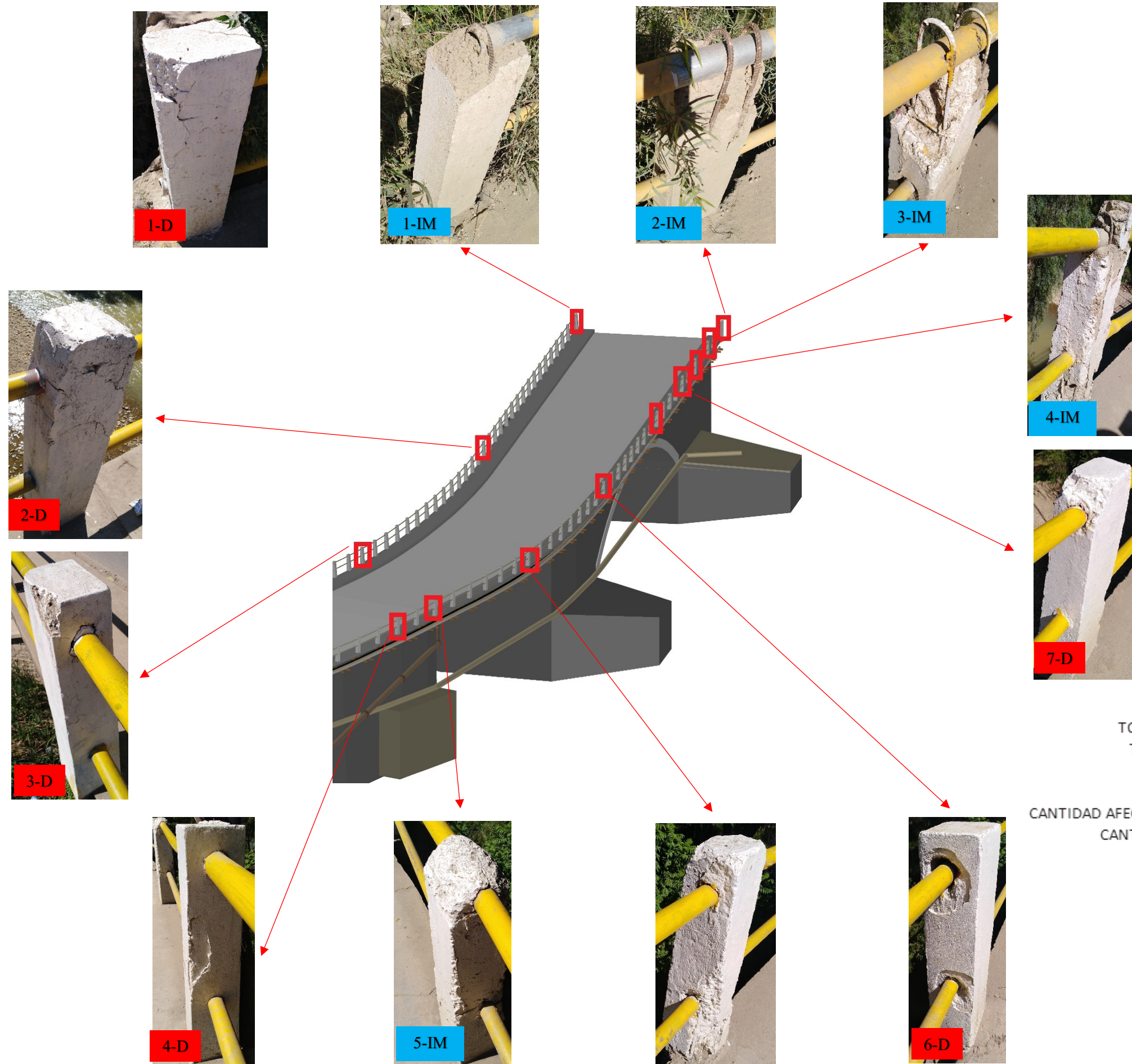


CANTIDAD AFECTADA (m)

- $L_1 = 1.90\ m$
- $L_2 = 1.85\ m$
- $L_3 = 1.85\ m$
- $L_4 = 1.90\ m$

$L_{TOTAL} = 7.50\ m$





TOTAL POSTES LADO IZQUIERDO = 27
 TOTAL POSTES LADO DERECHO = 27
 TOTAL POSTES AFECTADOS = 12

CANTIDAD AFECTADA POR DESPRENDIMIENTO= 7
 CANTIDAD AFECTADA POR IMPACTO= 5

ALTURA DE LOS POSTES = 0.83 m

CANTIDAD AFECTADA (m)

$0.83m * 7 = 5.81 m$
 $0.83m * 5 = 4.15 m$