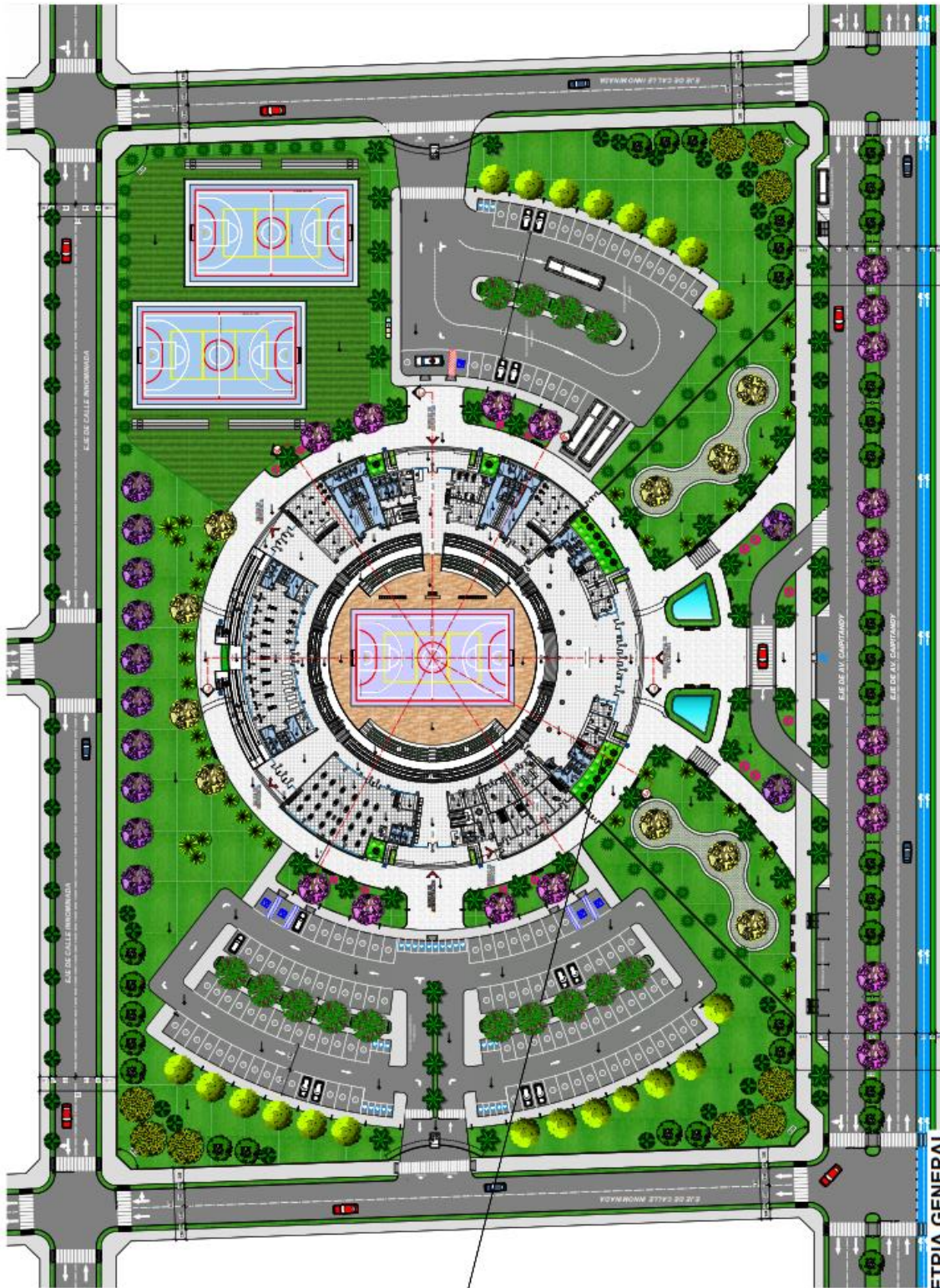
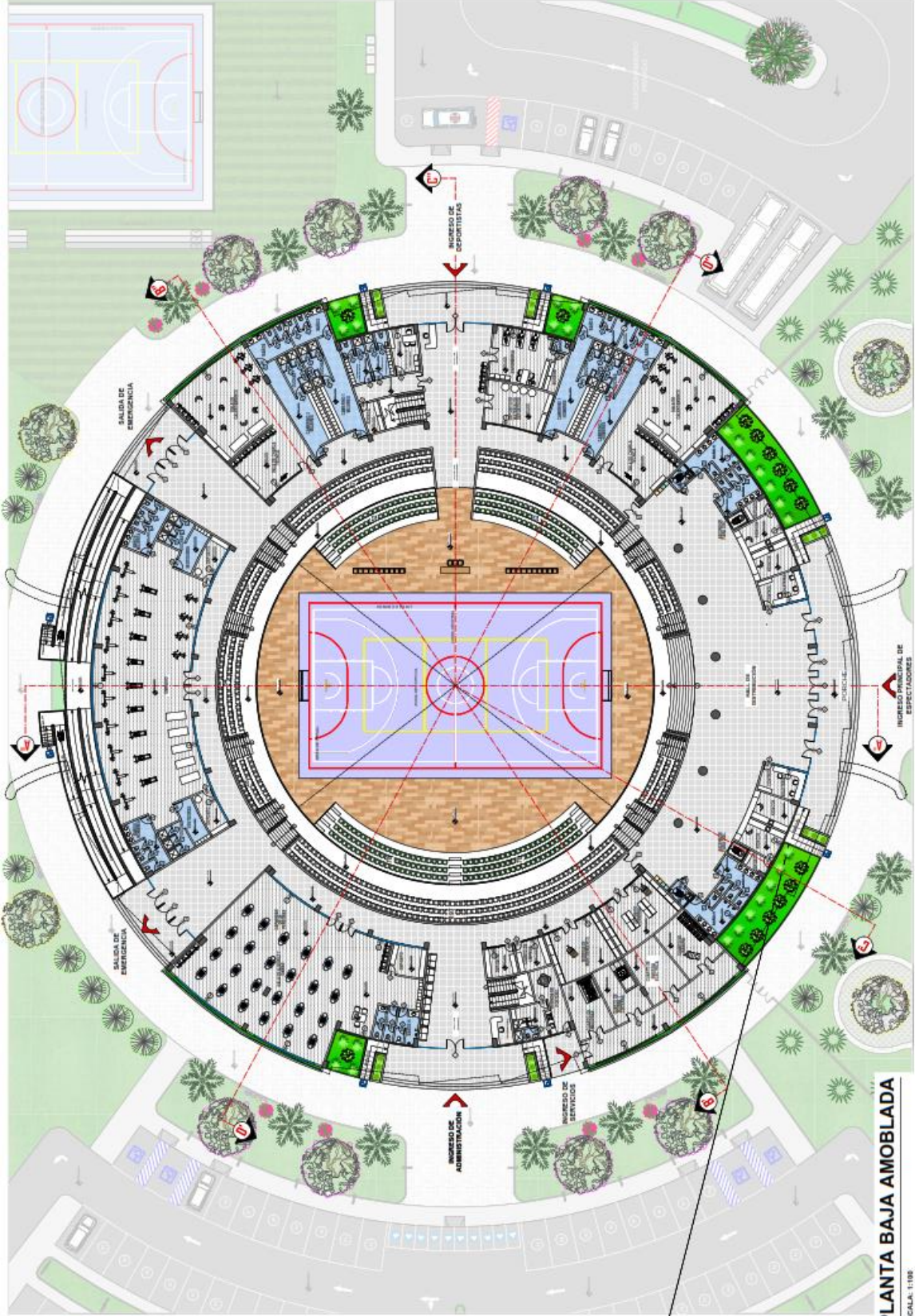


# PLANOS ARQUITECTONICOS

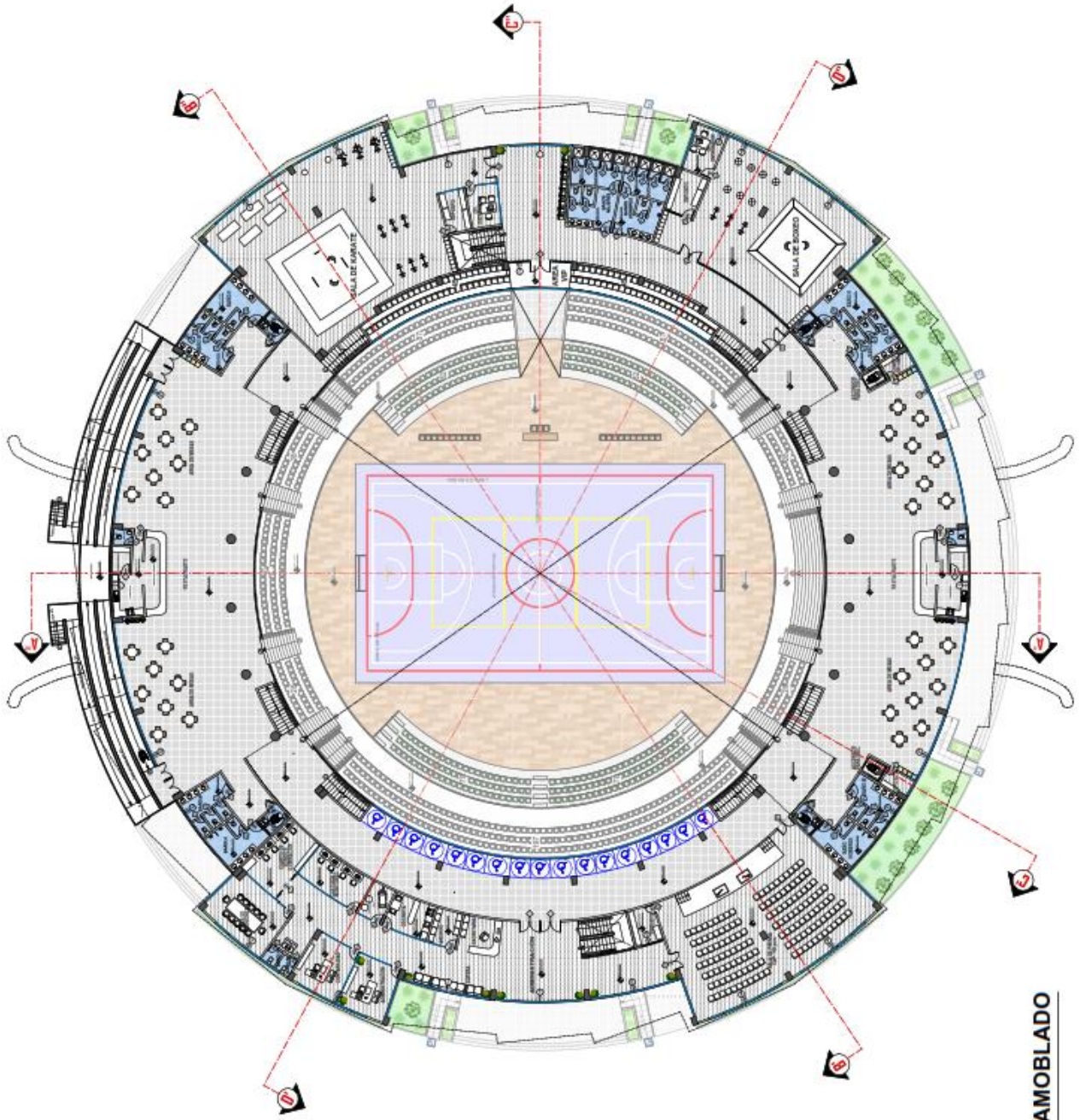


PLANIMETRIA GENERAL

ESCALA: 1:200

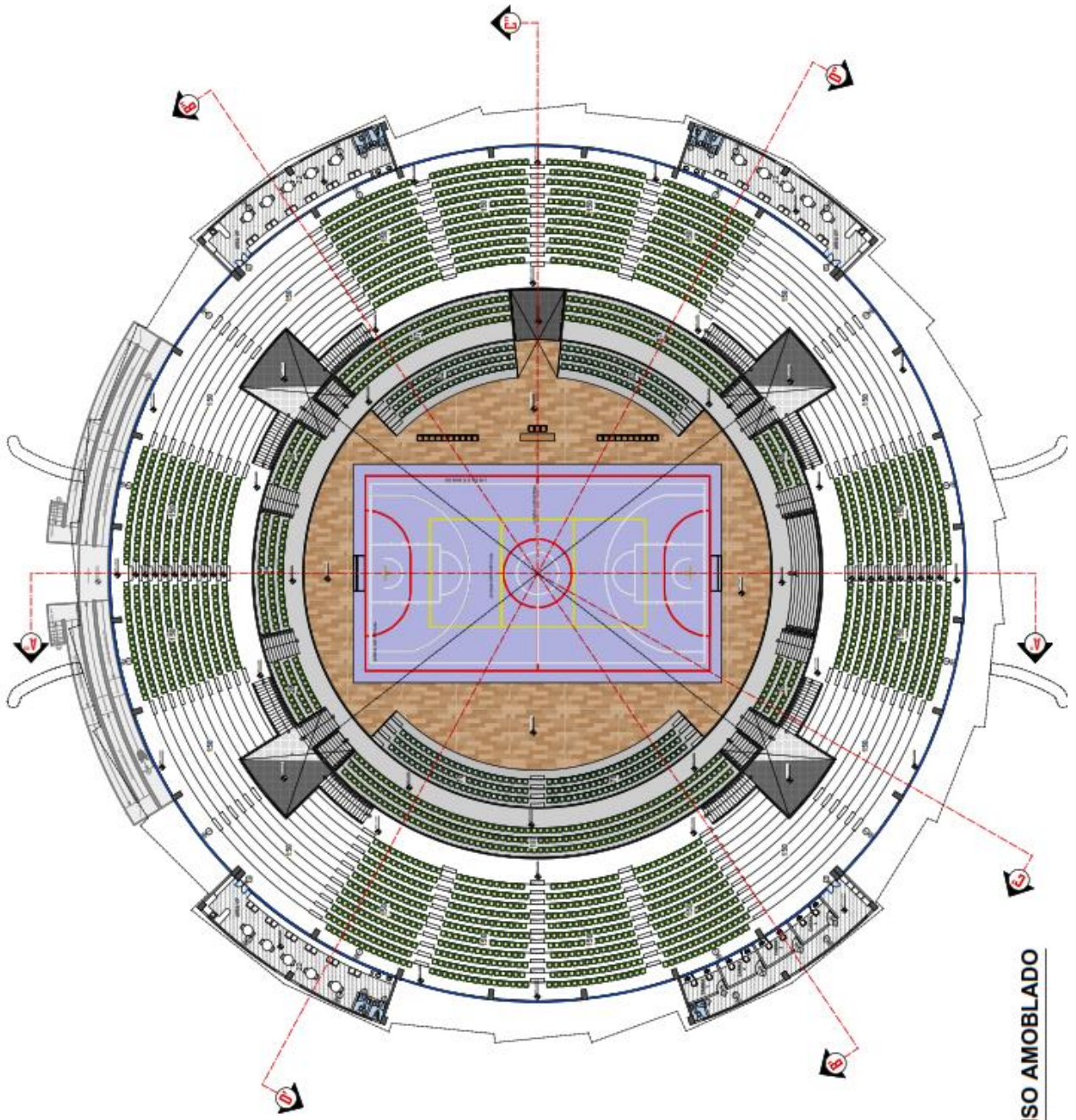


**PLANTA BAJA AMOBLADA**  
 ESCALA: 1:100



**PLANO PRIMER PISO AMOBLADO**

ESCALA: 1:100



PLANO SEGUNDO PISO AMOBLADO

ESCALA: 1:100

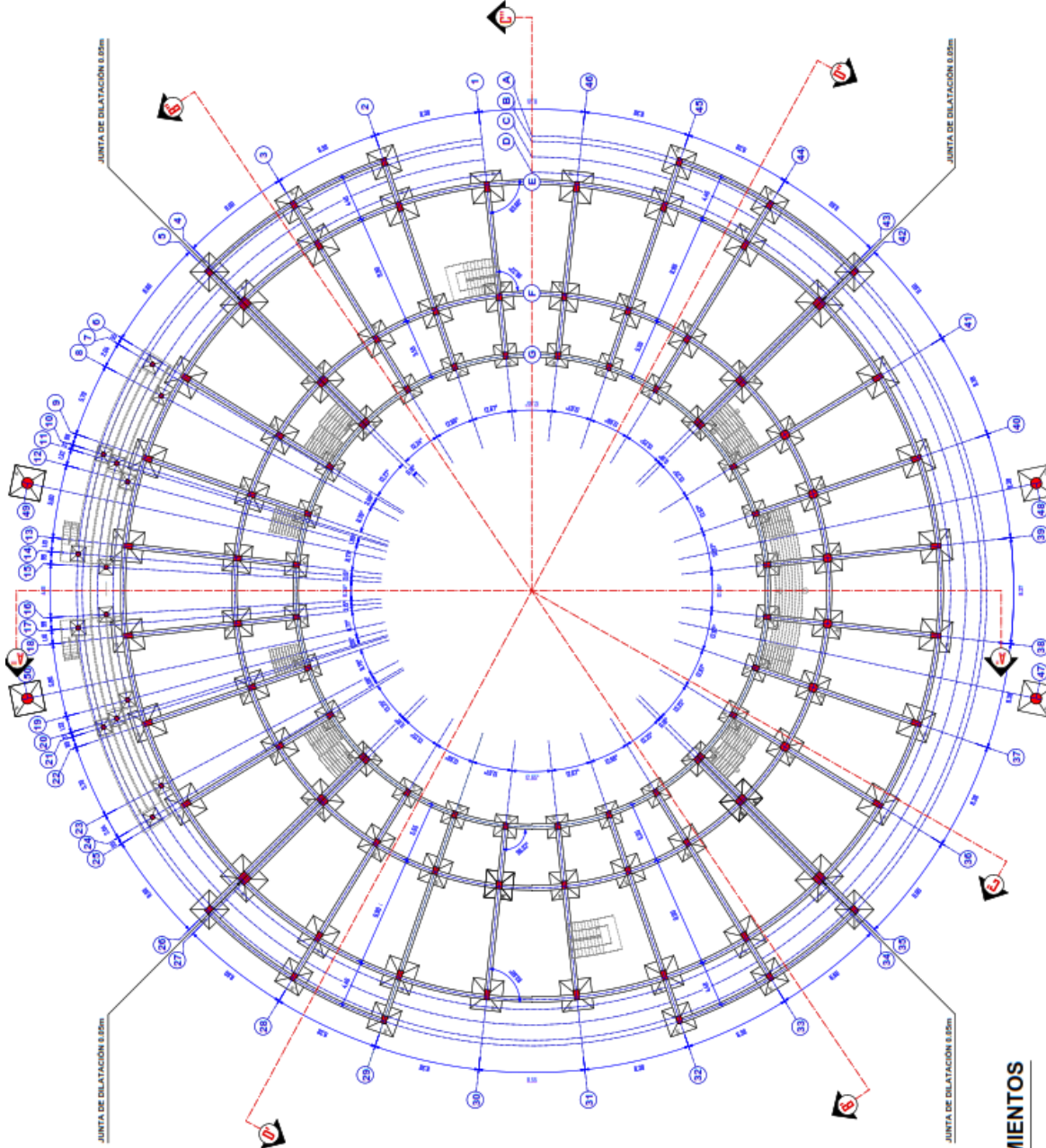




PLANO DE SITIO Y TECHOS

ESCALA: 1:250

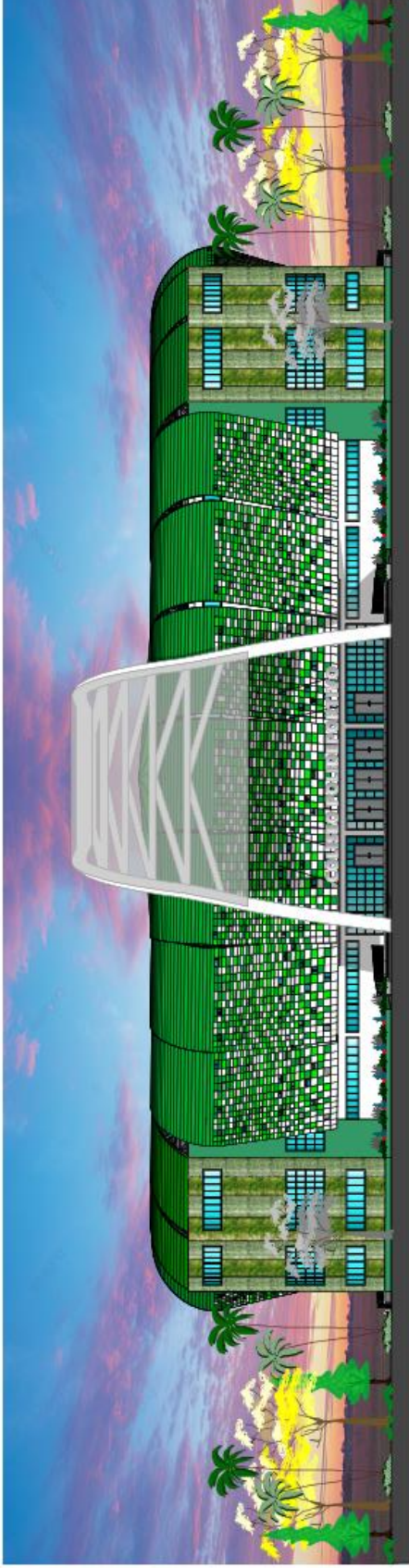
CUADRO DE REFERENCIA	
	<b>Z11</b> Zapata Abalada de 175°
	<b>Z12</b> Zapata Abalada de 175°
	<b>Z13</b> Zapata Abalada de 175°
	<b>Z14</b> Zapata A. Mediana de 175°
	<b>Z15</b> Zapata A. Mediana de 175°
	<b>Z16</b> Zapata A. Mediana de 175°
	<b>Z17</b> Zapata Abalada de 175°



PLANO DE CIMIENTOS

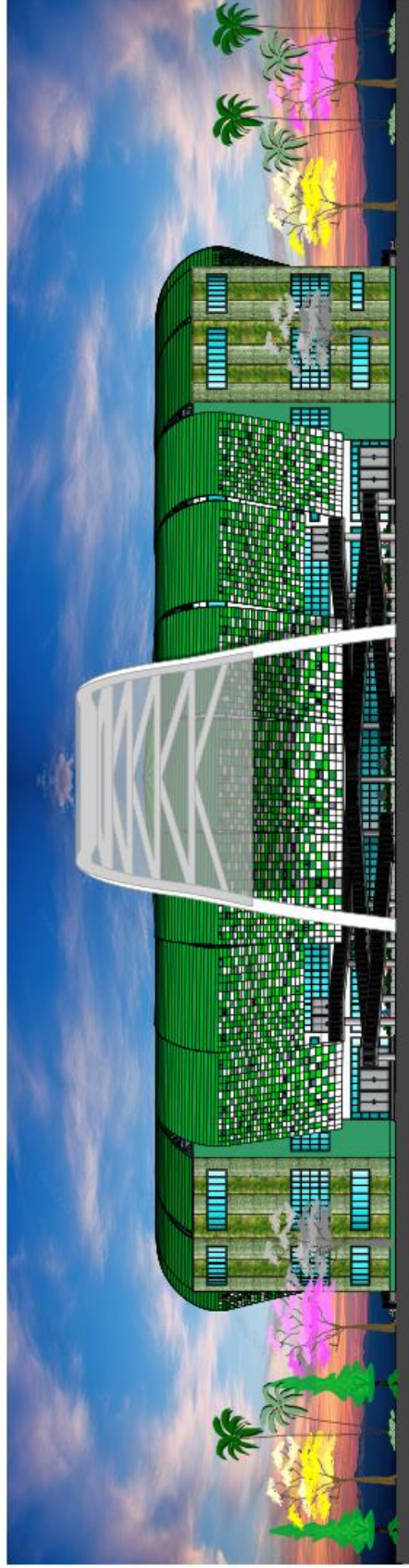
ESCALA: 1:100





FACHADA PRINCIPAL

ESCALA: 1:100

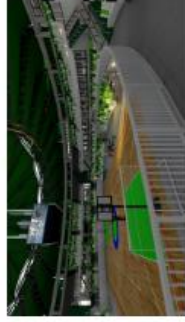


FACHADA POSTERIOR

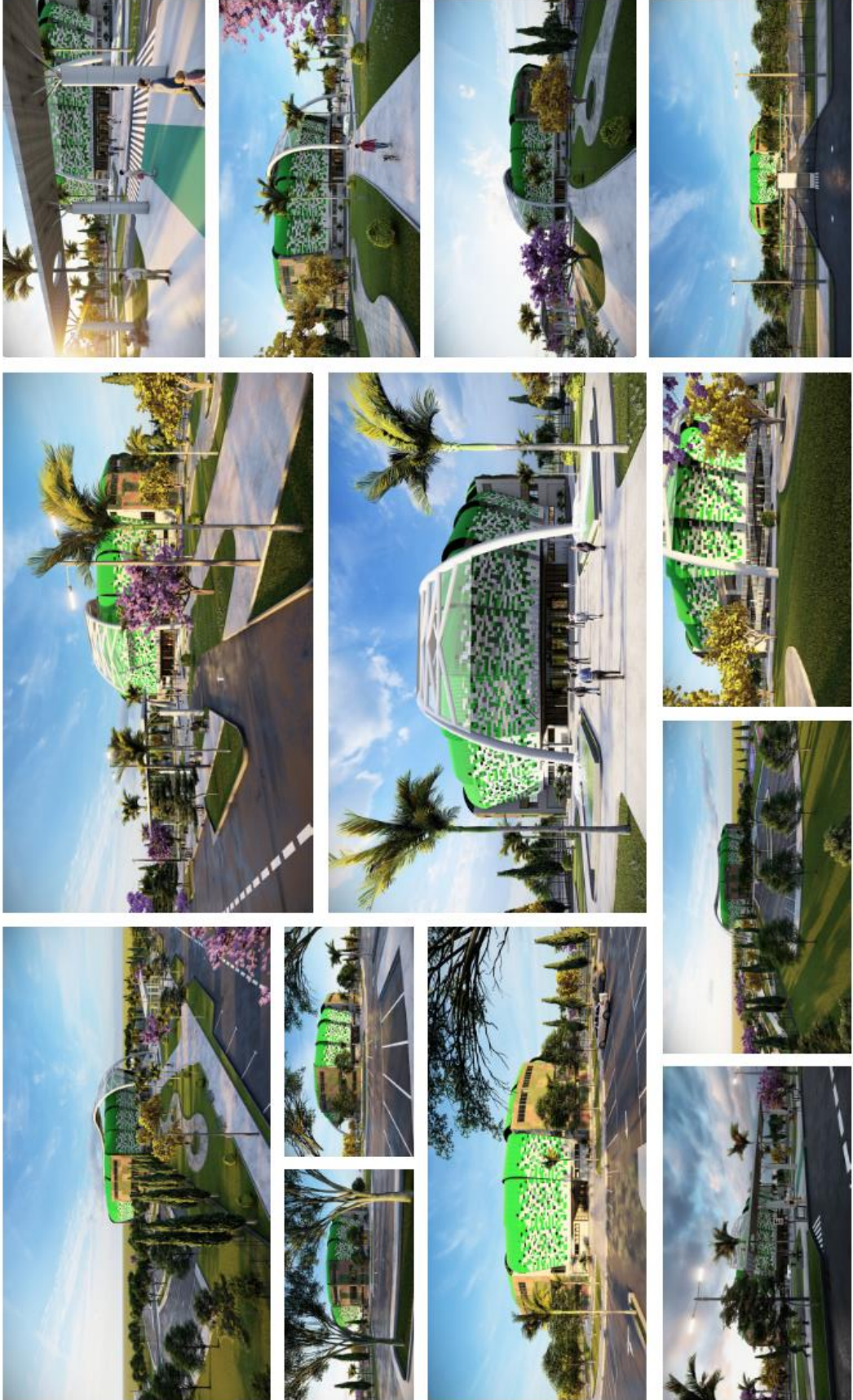
ESCALA: 1:100







**PERSPECTIVAS INTERIORES**



© PRESPECTIVAS EXTERIORES