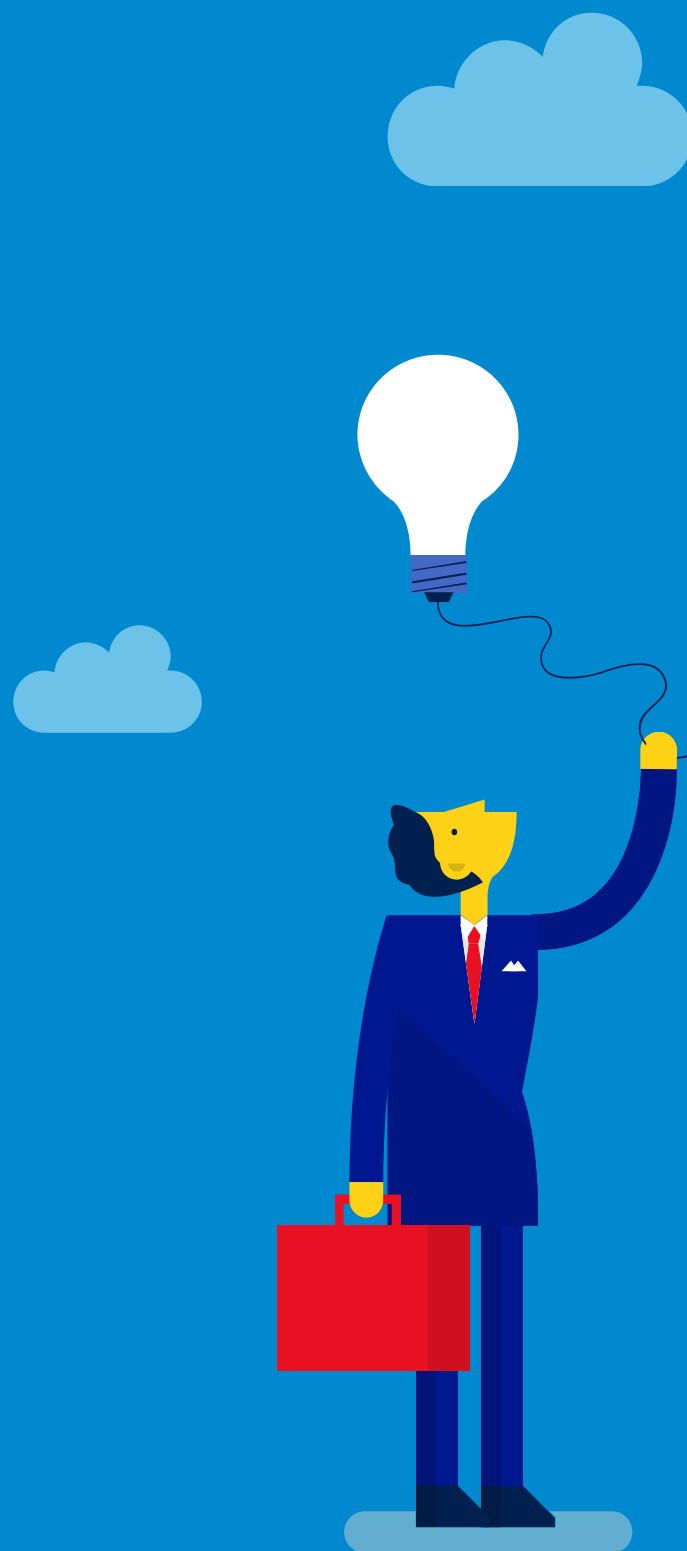


SharePoint Server 2016



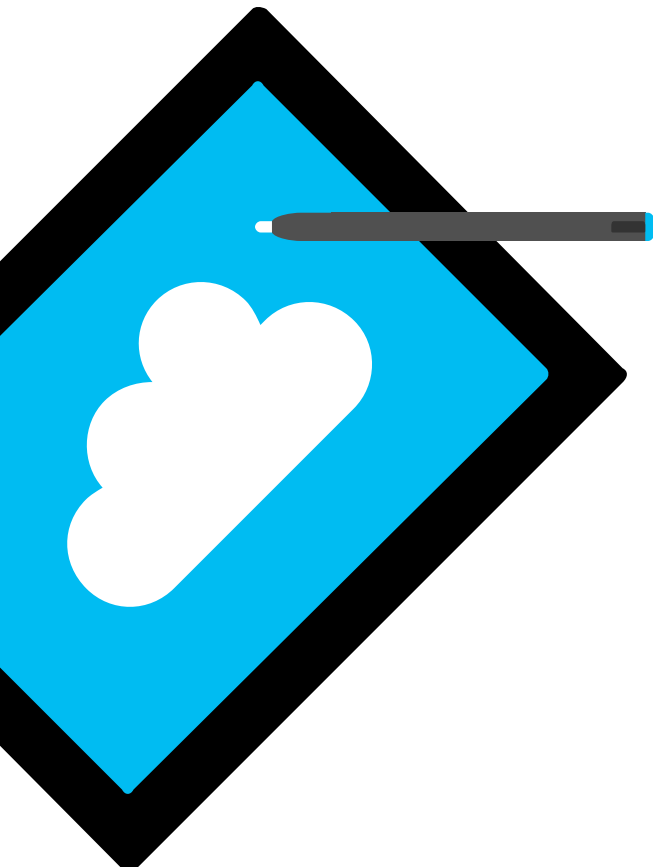
Reviewer's Guide





© 2016 Microsoft Corporation. All rights reserved. This document is provided "as-is." Information and views expressed in this document, including URL and other Internet Web site references, may change without notice. You bear the risk of using it. Some examples are for illustration only and are fictitious. No real association is intended or inferred. This document does not provide you with any legal rights to any intellectual property in any Microsoft product. You may copy and use this document for your internal, reference purposes.

Why SharePoint Server 2016?



In today's volatile economic climate, organizations require collaboration, communication, and productivity solutions to be both cost-effective and flexible. SharePoint Server 2016 can help you achieve new levels of reliability and performance, delivering features and capabilities that simplify administration, protect communications and information, and empower users while meeting their demands for greater business mobility.

SharePoint Server is a preferred choice among organizations to enable rich, seamless, and productive collaboration. SharePoint Server 2016 builds on the investments of previous SharePoint releases and Office 365 innovation to:

- Lower IT costs with a flexible and scalable collaboration platform.
- Better manage risk by safeguarding your business with secure and reliable capabilities.
- Increase productivity through cost-effective and efficient management.

SharePoint Server 2016 has been designed, developed, and tested with the Microsoft Software as a Service (SaaS) strategy, building on SharePoint Online as its core. Drawing extensively from that experience, SharePoint Server 2016 offers you new and improved, highly flexible deployment options. You can choose from a traditional on-premises deployment, a hosted service with Microsoft Office 365 sites powered by Microsoft SharePoint Online, deployment in Azure Infrastructure as a Service (IaaS), or a mix of these options with a hybrid approach, empowering you to choose how and when you take advantage of on-premises or cloud-based solutions, all without changing the user experience. Seamless integration with on-premises people experiences and taxonomy ensure a consistent experience within or beyond the firewall.



Infrastructure

Ever-changing business conditions require you to be agile, and that means investing in solutions that provide reliability and choice. SharePoint Server 2016 provides the flexibility to tailor deployments based on your unique business needs.

SharePoint Server 2016 allows you to maximize the value of your existing infrastructure while enabling you to take advantage of the latest hardware innovations and computing technologies—making it capable of handling enormous amounts of data faster, more efficiently, and at a lower cost.

Experiences

Making decisions faster and keeping in contact are critical capabilities for increasing effectiveness in any organization. Users' ability to access information while on the go is now a workplace necessity.

SharePoint Server 2016 provides improved mobile access to content, people, and applications along with touch-based experiences across devices and screen sizes. It makes file storage and document collaboration more people-centric. And it enables improved user experiences and capabilities derived from innovations in Office 365, available either as part of your on-premises deployment or through a hybrid implementation of SharePoint Server 2016 and Office 365.

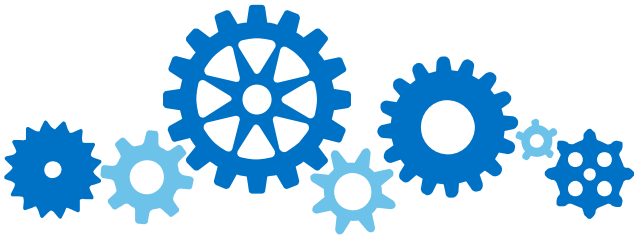
Compliance

Data loss is non-negotiable, and overexposure to information can have legal and compliance implications. SharePoint Server 2016 provides a broad array of features and capabilities designed to make certain that sensitive information remains that way, and to ensure that the right people have access to the right information at the right time.

This guide walks through new features and capabilities that address these challenges.

Table of Contents

Infrastructure	4
Cloud Inspired	5
Performance and Scale	5
Empower end users while managing risk, complexity, and cost	5
Deployment Flexibility	6
Reliable	7
Project Server 2016	7
Windows Server 2016	7
SQL Server 2016	7
Cloud Accelerated	8
Operational Insights	9
Experiences	10
Intuitive	11
Simple Sharing	11
Large File Support	11
Durable Links	11
Simple Controls	11
Mobile and Touch	12
Fast Site Creation	13
Site Folders	13
Search	13
Developer Experiences	13
Compliance	14
Secure	15
Find the perfect balance between compliance and collaboration	15
Data Loss Prevention	15
Classification Ids	15
Policy Templates	16
Document Encryption	16
Conclusion	18
Resources	18



Infrastructure

Application architectures continue to evolve, and SharePoint Server 2016 has been designed to take advantage of hardware trends and technological advances that enable applications to harness inexpensive commodity hardware. This means that you can scale effectively and efficiently. Improvements in performance and scale provide support for demanding workloads, and a combination of powerful features and capabilities balance the needs of users with those of IT.

Cloud Inspired

Pressure to optimize your IT infrastructure for ever-changing business conditions requires you to be agile, and that means investing in solutions that provide reliability and choice. SharePoint Server 2016 provides the flexibility to tailor deployment based on your unique business needs.

SharePoint Server 2016 provides scalability, reliability, and security while allowing you to take advantage of the latest hardware innovations and computing technologies—making it capable of handling enormous amounts of data faster, more efficiently, and at a lower cost.

Empower end users while managing risk, complexity, and cost

Boundaries and Limits

As your business grows, so does the amount of data it creates. SharePoint Server 2016 provides unparalleled scale so it grows with your business.

Search

SharePoint Search has been redesigned to support indexing of up to 500 million items per Search Server Application.

Site Collections and Sites

Store up to 100,000 site collections per content database, a 5x increase when compared to SharePoint Server 2013.

Content Databases

Reduce sprawl and mitigate operational complexity with new content database limits designed to minimize the database footprint and store terabytes of information per database.

List Views

Improvements to List Views relax the limits on the List View Threshold, ensuring even large lists don't disrupt service to users.

Performance and Scale

SharePoint Server 2016 is designed to work how you work—providing scale and performance capabilities to grow with your business. SharePoint Server 2016 carries forward the solid architecture provided in SharePoint Server 2013, but also includes new capabilities designed to support the most demanding workloads.

Cloud Inspired



Deployment Flexibility

SharePoint Server 2016 provides unprecedented deployment flexibility, whether you're looking to deploy on-premises, in the cloud, or in a hybrid scenario. As business needs and technological advancements converge, IT professionals have a unique opportunity to take advantage of new innovations in their organizations.

For example, IT professionals need an infrastructure that scales up and down quickly to meet changing business needs, minimize downtime and failures, and maximize cost efficiencies. Fortunately, several key innovations are making that possible:

MinRole

One of the more difficult challenges beyond deploying software is managing the IT infrastructure to support it. In many cases, IT investment directly impacts the bottom line. SharePoint Server 2016 has been designed to reduce the emphasis on IT and streamline administrative tasks so IT professionals can concentrate on core competencies and mitigate costs, even against a backdrop of time pressures and limited technical skills. Tasks that may have taken hours to complete in the past have become simple, efficient, and effective processes that allow IT to focus less on day-to-day management and more on innovation.

Improved provisioning capabilities help IT departments and hosting service providers maximize existing infrastructure investments while exploring new services, improved management, and higher availability through an improved role-based installation architecture.

0 Downtime Patching

Stay up to date with the latest software updates without compromising service level agreements. SharePoint Server 2016 allows administrators to deploy updates and fixes while minimizing downtime and user disruption.

Reliable

Project Server 2016

New Project Server 2016 integration puts project and portfolio management closer to the content it depends on. SharePoint Server 2016 integrates Project Server 2016 (licensed separately) organizing your projects and tasks so you can track deliverables across SharePoint, Outlook, and Project while reducing the datacenter footprint.

Windows Server 2016

At the heart of the Microsoft Cloud Platform vision, Windows Server 2012 R2 and Windows Server 2016 bring Microsoft's experience delivering global-scale cloud services into your infrastructure with new features and enhancements in virtualization, management, storage, networking, virtual desktop infrastructure, access and information protection, the web and application platform, and more.

SQL Server 2016

SQL Server 2016 delivers breakthrough mission-critical capabilities with in-memory performance and operational analytics built-in. Comprehensive security features like new Always Encrypted technology helps protect your data at rest and in motion, and a world class high availability and disaster recovery solution adds new enhancements to AlwaysOn technology.

Organizations will gain deeper insights into all of their data with new capabilities that go beyond business intelligence to perform advanced analytics directly within their database and present rich visualizations for business insights on any device.

You can also gain the benefits of hyper-scale cloud with new hybrid scenarios enabled by new Stretch Database technology that lets you dynamically stretch your warm and cold transactional data to Microsoft Azure in a secured way so your data is always at hand for queries, no matter the size. In addition, SQL Server 2016 delivers a complete database platform for hybrid cloud, enabling you to easily build, deploy, and manage solutions that span on-premises and cloud.



Cloud Accelerated

Anywhere access to critical applications can help to enhance work productivity, improve communication, and increase customer touch, allowing organizations to improve their regular business rhythm and respond to market changes and opportunities. SharePoint Server 2016 allows you to take advantage of the latest Office 365 innovation with new cloud-accelerated experiences designed to bring the cloud to your business.



OneDrive for Business

Get up and running fast with OneDrive for Business in Office 365 and provide your users with a seamless data mobility experience that works with SharePoint Server 2016. With this feature, no matter where they are, users can quickly access their documents and any information that they choose to sync from their SharePoint sites. This best-of-both-worlds approach lets you keep your key business information in your own environment while allowing users the flexibility to access their documents from anywhere.

Office Graph / Office Delve

Enable personalized discovery of information through enabling the power of the Office Graph and Office Delve with your content stored in SharePoint Server 2016.

Team Sites

Extend Team Sites to Office 365 with connected experiences that bring together people, documents, and sites across on-premises and the cloud.

Extranet

For many businesses, the Web has become a key means of communicating with existing customers and attracting new business, overtaking more traditional, costly channels such as dedicated extranets. The cost savings and scale achievable through enabling these scenarios with Office 365 extranet scenarios results in immediate value for your business and customers.

Yammer

Team collaboration often focuses on documents, and the easier it is to communicate about those documents, the easier it is to move projects forward. Having two-way conversations about documents in real time, from within the documents themselves, can not only enhance communication, it can also improve employee engagement and spark innovation. Such productive social conversations about team documents are now possible in SharePoint Server 2016.

You can start a Yammer conversation for any document that is stored in a SharePoint Server 2016 document libraries or in OneDrive for Business just by clicking Post, the new command that's available in document library callouts and search results for Office documents. By using Post to communicate with your peers about a document, right from within the context of that document, you can improve the discoverability of deliverables.

Extensible App Launcher

The **App Launcher** is a familiar feature in Office, and it has been extended to SharePoint Server 2016. The App Launcher provides a common location to discover new apps and navigate SharePoint on-premises and Office 365.

The extensible hybrid app launcher is designed to help you get to your Office 365 apps and services from SharePoint Server 2016. The App Launcher is enabled when enabling hybrid Team Sites and/or OneDrive for Business. With the new App Launcher you'll see the Office 365 Delve and Video apps, along with your custom Office 365 tiles, in the SharePoint Server 2016 App Launcher.

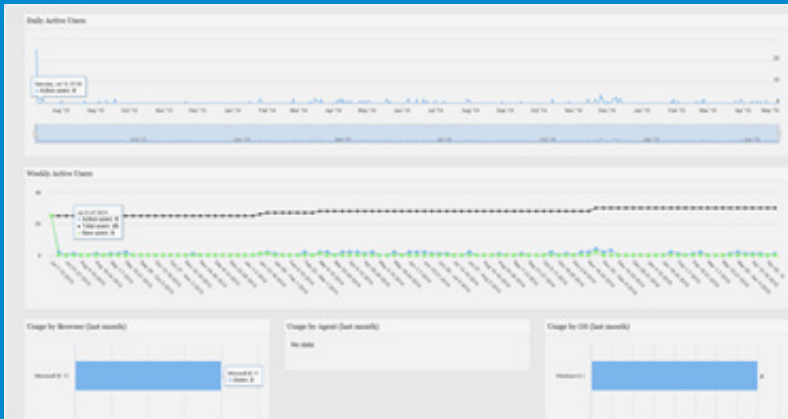
Profile Redirection

Profile redirection is a component of the hybrid Team Sites feature. Profile redirection, in a hybrid Team Sites configuration, redirects cloud (hybrid) users to their profile in Office 365 powered by Office Delve, ensuring hybrid users have a single place for their profile information.

Compliance

SharePoint Server 2016 allows you to accelerate DLP experiences on-premises and across Office 365. Leverage new retention, preservation, and data loss prevention features in SharePoint Server 2016, or connect your on-premises SharePoint deployment to Office 365 and take advantage of capabilities in the cloud such as Document Fingerprinting, Item-level Encryption, and eDiscovery across cloud and on-premises content, without the need of migrating your content.

Figure 1 Sample Reporting Dashboard



Information workers in your organization handle many kinds of sensitive information during a typical day. Document Fingerprinting makes it easier for you to protect this information by identifying standard forms that are used throughout your organization.

Document Fingerprinting is a Data Loss Prevention (DLP) feature that converts a standard form into a sensitive information type, which you can use to define transport rules and DLP policies. For example, you can create a document fingerprint based on a blank patent template and then create a DLP policy that detects and blocks all outgoing patent templates with sensitive content filled in. Optionally, you can set up Policy Tips to notify senders that they might be sending sensitive information, and the sender should verify that the recipients are qualified to receive the patents. This process works with any text-based forms used in your organization.

SharePoint Insights

SharePoint Insights provide enhanced logging, and new APIs enable real-time reporting to simplify the process of logging SharePoint usage data. New insights allow developers to create usage logs with strong types and schema from server and/or client side without the hassle of creating and taking care of logging data pipelines, and provide IT Professionals with advanced SharePoint analytics dashboards.



Experiences

Now more than ever, experiences are about much more than “look and feel.” Great experiences are those that look great and work flawlessly. They entertain and engage, with rich, contextual, and relevant content. They are easy to use. And they ensure reliability, performance, and security under real-world pressures of scale and complexity.

Intuitive

Reimagined to focus on users, SharePoint Server 2016 has a new, fluid design that shows perfectly across screens—whether with touch-enabled slates and phones, laptops, or desktops. Beautiful and fast, familiar yet intuitive, SharePoint Server 2016 gives you instant access to people, applications, and content. You'll spend less time searching for information and more time working with it.

Simple Sharing

SharePoint Server 2016 improves the sharing experience by making it more natural for users to share sites and files.

Sharing a site is simple in the new version of SharePoint. On every page of the site, there's a "Share" button in the top right corner. Just click on it, type in names of people you want to share with, and hit enter. That's it—you're done! SharePoint still uses powerful concepts like permission levels, groups, and inheritance to provide this experience, but you don't have to understand those concepts anymore to accomplish everyday tasks like sharing a site.

Make everyday tasks faster and easier.

The people you just shared with will get an email invitation with a link to the site.

Part of sharing is also understanding who can see something. If you want to find out who is already on this site, you can check that easily as well. Under the "Settings" menu in top right corner, click on "Shared with" and you'll see the names and pictures of people who have access to the site.

Large File Support

The world of collaboration has changed. Text-based files are shifting to modern media: videos, audio, and more. SharePoint Server 2016 provides support for uploading files up to 10 GB.

File Performance

File sizes continue to grow at an exponential rate, and SharePoint Server 2016 implements the latest in transfer technologies to drive increased upload and download performance while maximizing use of unclaimed bandwidth. New Background Intelligent Transfer Service (BITS) support facilitates prioritized, throttled, and asynchronous transfer of files between machines using idle network bandwidth transferring data in the background, i.e., BITS will only transfer data whenever there is bandwidth that is not being used by other applications, and it resumes transfers in case of disruptions. BITS constantly monitors network traffic for any increase or decrease and throttles its own transfers to ensure that foreground applications (such as a web browser) get the bandwidth they need.

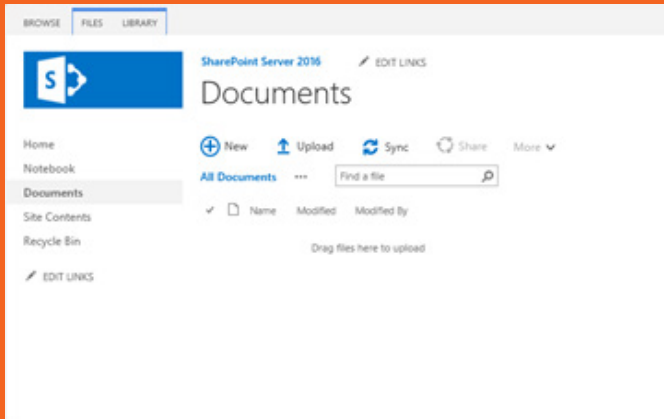
Durable Links

Improved links ensure that when files are moved or renamed, the original link to the file continues to function.

Simple Controls

Based on our investments in SharePoint Online and OneDrive for Business, SharePoint Server 2016 document libraries inherit the new, improved control surface for working with files and content, simplifying the user experience for file creation, sharing, and management.

Figure 2 Simple Control Surface



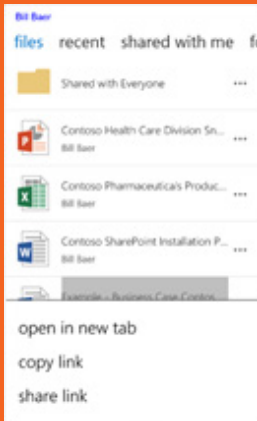
Mobile and Touch

Making decisions faster and keeping in contact are critical capabilities for increasing effectiveness in any organization. Users' ability to access information while on the go is now a workplace necessity. In addition to a consistent cross-screen experience, SharePoint Server 2016 provides the latest technologies and standards for mobile push and information synchronization.

In today's connected world, responding to the consumerization of IT can be challenging. With a proliferation of devices across the organization, you need to be sure your software will support users' preferred equipment. SharePoint Server 2016, with deep investment in HTML5, provides IT professionals and designers with capabilities that enable device-specific targeting of content. This helps ensure that users have access to the information they need, regardless of the screen they choose to access it on.

SharePoint Server 2016 further empowers your workforce by delivering a consistent experience across screens, whether using a browser on the desktop, a mobile device, or a tablet or slate. Through this rich experience, users can easily transition from one client to another without having to sacrifice feature fidelity.

Figure 3 Mobile Web Experience



Fast Site Creation

Get up and running quickly with new collaboration sites with new rapid provisioning logic that enables creation in seconds as opposed to minutes or hours.

Site Folders

Quickly access the content of sites you're a member of with Site Folders. Site Folders bookmark sites you're following so you can quickly access their contents from OneDrive for Business.

Search

Another improvement is the new OneDrive for Business search box. It's smarter, with type-ahead features helping you find a document that might have been shared with you, or one that you tucked away several folders deep. You can also perform actions, like sharing these files, directly from the search results.

Developer Experiences

As a developer, you have new scenarios to create contextual solutions that span SharePoint Server 2016 and Office 365 from the web, mobile apps, and Office. You have new robust APIs and tool improvements to make building solutions easier than ever before. And your solutions have the potential to reach a vast number of users across businesses, government organizations, and schools, who spend hours every day using Office on-premises or in the cloud with Office 365.

The new Office 365 APIs, available in SharePoint Server 2016, enable you to provide access to your customer's SharePoint Server 2016 and Office 365 data, including the things they care about most: their mail, calendars, contacts, users and groups, files, and folders—all right from within your app itself, no matter your development platform or tools.

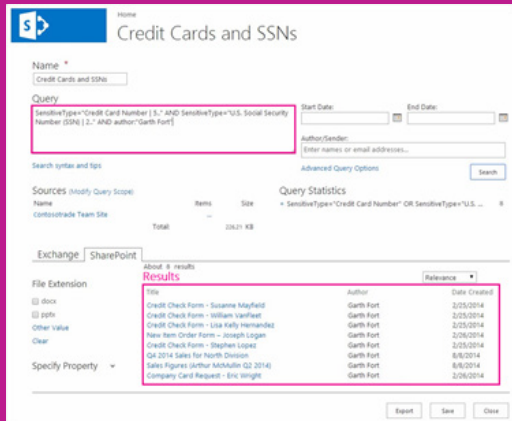


Compliance

Data loss is non-negotiable, and overexposure to information can have legal and compliance implications. SharePoint Server 2016 provides a broad array of features and capabilities designed to make certain that sensitive information remains that way, and to ensure that the right people have access to the right information at the right time.

Secure

Figure 4 Sensitive Information Types in SharePoint Server 2016



Find the perfect balance between compliance and collaboration

Complying with regulatory standards and protecting business-critical and personal data from leakage continue to be a priority for organizations and corporate IT. A key requirement for compliance and data protection is the ability to:

- Control who has access to information.
- Report on who actually accessed specific information.

SharePoint Server 2016 helps provide enhanced data security and compliance by offering simplified configuration and administration for regulatory policies. SharePoint Server 2016 puts IT professionals in a better position to control access to company- and customer-sensitive data by making authorization and audit management more central, flexible, and natural.

Securing information is critical to protecting your organization's competitive advantage. SharePoint Server 2016 provides a rich security model that both simplifies how information is shared and helps to ensure its security and compliance with corporate policies. We designed and built SharePoint Server 2016 with a holistic approach to security design, employing strict standards and a multilayered, defense-in-depth approach to help protect against malware, data leakage, and other threats. We began by employing the industry-leading Microsoft Security Development Lifecycle (SDL), a security-assurance methodology used by all Microsoft engineering teams that includes extensive threat modeling, penetration testing, and security-focused development practices, all of which help prevent unauthorized access to content and data loss prevention.

Data Loss Prevention

Built-in and cloud-connected compliance, security, and threat protection for both administrators and end users.

Sensitive Information Types

In SharePoint Server 2016, DLP is now built into Enterprise Search. It allows you to search for sensitive content in your existing eDiscovery Center, keeping content in place and enabling you to search in real time. SharePoint Server 2016 provides a wide range of sensitive information types from different industry segments and geographies, such as credit card numbers, Social Security numbers (SSNs), bank account numbers, and other types, many of which you may already be using to search for sensitive content in email. These sensitive information types are detected based on pattern matching and are easy to set up. You will now be able to extend these same sensitive information types to search across SharePoint Server 2016.

Policy Templates

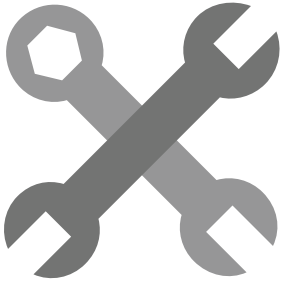
You can use DLP policy templates to get started with your DLP solution in SharePoint Server 2016. A DLP policy template is a model for a policy. You can select a template to begin the process of building your own customized DLP policy. Within your DLP policy, you can customize the rules to ensure that it meets your business needs for data loss prevention. Several policy templates are supplied by Microsoft, but these are not the only way to implement a data loss prevention solution in Exchange.

Document Encryption

IT professionals who desire an additional layer of defense against information leakage may want to consider the use of Information Rights Management (IRM) on-premises or cloud accelerated with Office 365 Compliance Center integration, which allows content creators to assign rights to Microsoft Office documents or list items shared with others.

When IRM is employed, the data in rights-protected documents or list items are encrypted, so that it can only be viewed by authorized users. IRM can also be used to limit other rights to a document or item—such as the ability to limit access to read-only, prevent content in the document or item from being copied, or prevent the document or item from being printed.





“Designed from the cloud up, SharePoint 2016 provides customers the benefits of years of cloud innovation, providing best-in-class IT and Developer experiences, and delightful IW scenarios that works the way users work.”

Conclusion

SharePoint Server 2016 provides a comprehensive solution for connected information, enabling people to transform the way they work while preserving the advantages of structured processes, compliance, and existing IT investments.

SharePoint Server 2016 has been optimized for the way people work, providing them with a familiar, consistent view of information, collaboration, and process. At the same time, IT benefits from a comprehensive, easily managed, and integrated platform that meets the needs of the business.

With SharePoint Server 2016 providing the foundation for a commitment to optimizing the way people work, organizations can more fully mobilize the talent of users and systems to drive high-value relationships, rapid innovation, and operational excellence.

For more information, go to <http://sharepoint.microsoft.com>.

Resources

Learn more about what's new in SharePoint Server 2016 at <http://technet.microsoft.com/sharepoint/fp142366>.

Learn about what's new for IT professionals in SharePoint Server 2016 at [http://technet.microsoft.com/library/cc261970\(v=office.15\)](http://technet.microsoft.com/library/cc261970(v=office.15)).



Thank you

